

Best Practice



Issue 665 | March/April 2023 | 0121 725 1587 | www.bestpracticeuk.co.uk

Search for us on LinkedIn  and follow us on Twitter  @best_pra_uk or download our iOS app



Altair and Cadline Partnership

We are pleased to announce that Altair and Cadline have combined their vast years of expertise within the housing sector, creating a partnership to support customers.

Utilising Cadline's DynamicAIM product and support, alongside Altair's sector knowledge and technical expertise, customers will be supported throughout their journey towards Safety Case compliance and the production of a "Golden Thread of Information".

After the publication of the Hackitt Review, and in preparation for the Building Safety Act, Altair and Cadline are working with multiple registered housing providers to help navigate the shifting landscape and the need to manage a wide range of building information on a much larger scale. By understanding the challenges being faced and using software development skills to streamline existing data management systems, compliance can be more easily achieved.

How DynamicAIM can help The DynamicAIM system is designed to be tailored to the unique needs of each customer and ultimately facilitate the delivery of safety cases. This starts with the production of a customer specific 'golden

thread' of information, progressing to identifying data requirements, facilitating data collation, and providing a gap analysis.

Utilising innovative technology, the DynamicAIM web app removes traditional tech barriers when adopting and consuming complex Revit / Plant 3D / GIS and survey data, bridging the gap between design, construction and asset management, without the need for wholesale renewal or replacement of existing databases.

Altair and Cadline can provide support from the initial strategic direction to data review, data collation and input, and can help pull together safety cases by offering a fully tailored solution.

For media enquiries and for any further information, please contact marketing@cadline.co.uk



RMIG Solutions

Industrial Processing includes a vast range of potential applications for perforated products. RMIG Solutions has extensive experience in the chemical, pharmaceutical, paper, and offshore industries, to name a few. From small, high precision perforation in thin materials to large holes in thick sheets used in the mining industry, RMIG Solutions has the knowledge, versatility, and tooling to deliver products according to customers' requirements.

One particular area of Industrial Processing is dealing with waste water. RMIG Solutions has vast experience in servicing the waste water industry, and produces high flow, burr-free perforated waste water screens, offering accurate screen tolerances and effective separation.

Another area of Industrial Processing is medical and pharmaceutical, where RMIG Solutions perforated materials are able to give firm tolerances during their manufacture, and are well suited for use in sterile environments. RMIG Solutions perforated products also have numerous uses in the petrochemical sector, from industry specific applications such as filtration, to oil and gas exploration, as well as more general applications such as walkways in processing plants.

Additionally, RMIG Solutions works with biomass drying applications. The demand for alternative sources of sustainable and renewable energy is always growing. RMIG Bridge Slot sheets are the most effective way of drying woodchip to an optimum

moisture content, ensuring boilers operate efficiently to benefit farming and agriculture.

Bridge Slot

The RMIG Solutions Bridge Slot sheets play an essential role when it comes to the design and manufacture of biomass drying floors. The combination of sheet thickness and opening size allows the sheets to be used either as a suspended floor in wood chip drying containers and trailers, or as drive-on drying floors in outdoor buildings. The bridge slot opening size determines the products that can be dried, which range from fine oilseed rape through to larger grains and cereals, as well as logs and wood chip drying.

Food Processing

RMIG Solutions Food Processing market sector meets the high levels of hygiene demanded by the food processing industry. RMIG Solutions tailor made perforated screens are ideal for cleaning, heating and steaming in food production environments. Whether it's baking trays, cereal cleaning or ingredient conveyors, all of RMIG Solutions perforated materials can be customised for each application.

www.rmig.com



Bespoke Springs

European Springs & Pressings are leading experts in spring manufacturing and high speed press technology, providing a full design and manufacturing service for bespoke and standard pressings, wireforms, coil and gas springs.



Established in 1948, with a standard product range of 12,000+ items and a dynamic balance of cutting-edge facilities, experienced engineers and thoughtful customer service, we are one of Europe's leading spring and stamped component suppliers.

European Springs and Pressings understand that no two jobs are the same; similar products often require the use of different materials, treatments, variable tolerances or specific heat resistance. This is why we invest in the latest technology and qualified toolmakers to ensure that we design and produce the very best bespoke stampings, springs and wire forms.

A custom-tailored manufacturing process and in-house design service - with CAD/CAM software and systems - means we can help you realise a range of prototype ideas, individually cut using precision lasers for R&D testing or put into full production. Our fully-equipped tool room can design and build any production tooling needed, assuring you of competitive pricing, consistent quality and dependable supply.

Working more closely with their UK manufacturing partners Metrol Springs and Lesjöfors Heavy Springs UK has allowed the sister-

companies to make their mutual platform of products and services more accessible, and enabled them to deliver a wider range of manufacturing capability and products to customers than ever before.

This culture of collaboration has been fostered by their parent company, Lesjöfors Springs & Pressings. European Springs & Pressings' coiling and stamping expertise and dedication to client support, alongside the market-leading portfolio of products and services across the Lesjöfors group, means that, now more than ever before, customers can continue to rely on the ESP promise - to provide innovative design solutions, reliable service and custom-made, quality components.

Our products are used in major industrial environments all over the world, so whether you need a conventional compression, tension, die, disc or torsion spring, or want the most obscure spring clip or wire form imaginable, we are able to produce exactly what you're looking for.

www.europeansprings.com

The professional way for all your industrial Chains, Slides, Bushes Etc.

Drip-It Chain Oilers



Built in the UK and designed with your jobs in mind to give you a system to meet your needs and will help:

- Reduce Friction
- Minimise Wear
- Reduce chain stretch
- Stop Corrosion

A Simple no moving parts, no power required oil system with our (Eco Range) of oilers.

Make this environmentally friendly choice with all parts recyclable.

Contact at sales@drip-it.uk

01584 874220



For all industries:

- Industrial Applications
- Machine Shops
- DIY home work shops

MADE IN BRITAIN

DRIP-IT ADJUSTABLE GRAVITY OILERS

- Reduce temperature
- Reduce power losses
- Reduce down time
- Save on repair/replacement costs
- Overhaul/lubrication
- Improve energy efficiency
- Reduce oil supply

- 1. Custom Built
- 2. Easy Setup
- 3. Multi Points
- 4. 2:1 - 5:1
- 5. Oil Optimisation
- 6. Gravity Feed
- 7. Cut your Energy Costs

Bush Lubrication

Gear Lubrication

Slide Rail Lubrication

Chain Lubrication

Beat the Enemy With Drip-It® Eco Oilers

Unit 5, The Green Industrial Estate, CULLEN, Stroud, Glos. GL9 7LQ

EUROPEAN

SPRINGS & PRESSINGS

European Springs

see them on page.. 1 & 19

UNISIG

Unisig

see them on page..... 4-5



Onrobot

see them on page..... 6-7



Lascar

see them on page..... 19

INTERFACE

LOAD CELL, TORQUE AND PRESSURE SENSOR SPECIALIST

People and products you can trust!

Automotive R&D

Whatever you need to measure
We have the sensors



FORCE • TORQUE • PRESSURE



interfaceforce.co.uk



+44 (0) 1344 77 66 66



info@interface.uk.com

Providing solutions for your force or torque measurement applications

interface
www.interface.uk.com

In this issue of Best Practice, we have chosen to recommend Interface Force for its expert services in providing solutions for all force or torque measurement applications.

Interface Force is an internationally recognised brand and decades of experience have gone into making Interface manufactured load cells the benchmark for thousands of users around the world, and Interface Force Measurements was established in 1996 by Neil Johnstone.

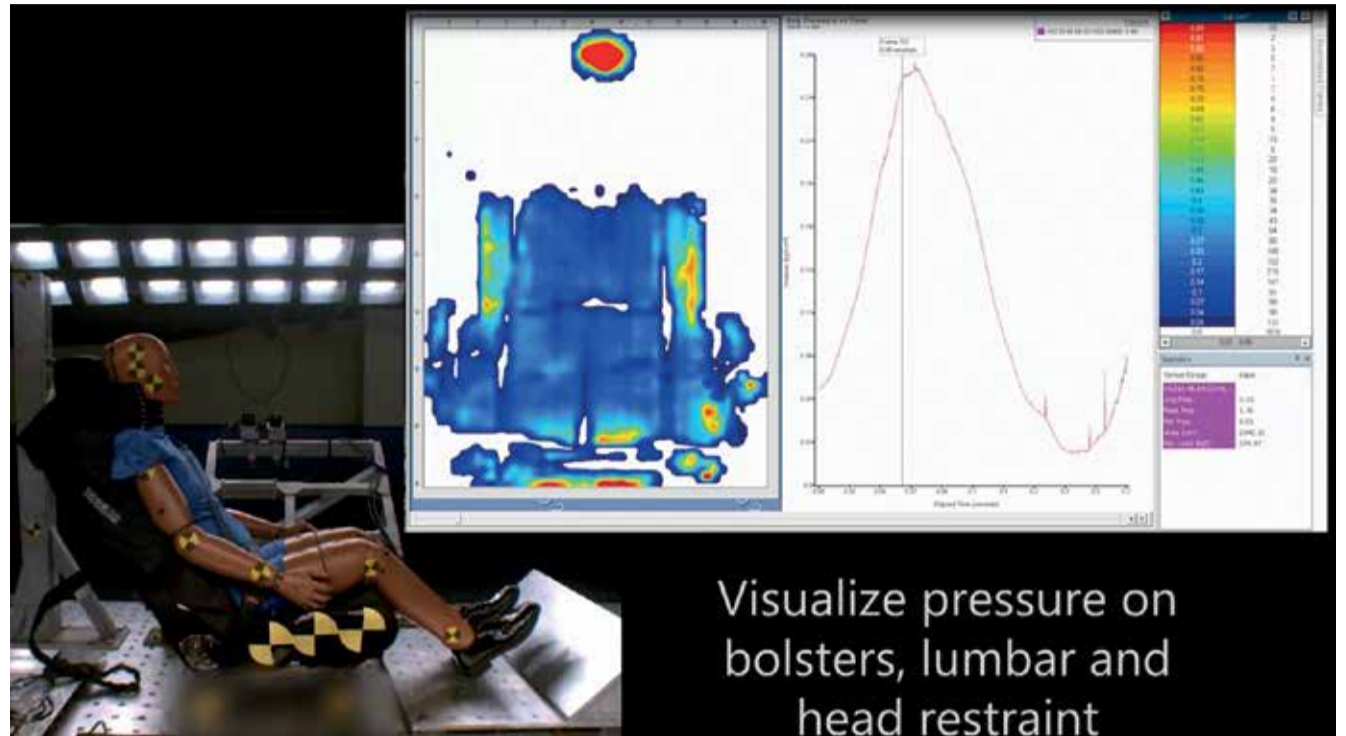
Based in Crowthorn, Berkshire, Interface Force distributes to the whole of the UK & Ireland, but also overseas, especially into Turkey, Greece and the Middle East. The company is a primary distributor for Load Cells manufactured by Arizona-based Interface Inc., and it also supplies their Torque Transducers, associated electronics, multi-access Load Cells and the XSensor Pressure Mapping systems.

The global Interface Inc. is represented by a large network of distributors outside of the US, and they have requested products that are designed and manufactured in metric, with the precision and accuracy of all Interface products. These products are designed for an international buyer and user, and all specifications are in metric specs, a global standard for force measurement products.

Interface Force work mainly with aerospace, automotive, and motorsport companies, and Business Development Manager Tony Rokins told us, "We work closely with companies which are undertaking research into product development, and so this includes universities and also medical companies who need load cells for weighing saline bags - we have a very wide and varied client portfolio."

In this crowded industry, Interface load cells and torque sensors have a hard-won reputation for reliable, accurate and repeatable test results. The range of pressure sensors and pressure mapping systems from industry leaders GP50 and XSensor back this reputation.

Tony continued, "With regards to force measurement, our load cells are preferred by aerospace companies because they are highly accurate, and the results are very repeatable. Also, the devices themselves are extremely reliable and so they are looked on very favourably by both automotive and aerospace manufacturers in particular."



Visualize pressure on bolsters, lumbar and head restraint

Interface Force is currently re-launching its XSensor High Speed Pressure Mapping System - the company offers a range of pressure mapping systems that can be applied to anything from impact testing to pressure testing tires, runways, beds, seats and much more. The XSensor system is the first system design to allow product designers and safety testing engineers to see, record and evaluate the distribution of force from high-speed impacts on safety equipment such as helmets and body armour.

The system is particularly popular with automotive and aerospace seating manufacturers as evaluating the performance of helmets and other protective equipment designed to prevent injury requires detailed understanding of the pressure distribution on the body surface during dynamic impacts. Xsensor's high speed HS Impact system combined with the thin conformable sensors allows customers to accurately measure those pressures and evaluate how different design configurations affect pressure distribution on impact.



In addition to this, the system is also used by manufacturers of office seating, companies that develop seating for the home, and bed manufacturers.

In spite of its success in the industry, Interface Force is very much looking to future development. Tony informed us, "We are building new Applications which are based around renewable energy, and we are also developing Cloud-based, Wifi and Bluetooth data acquisitions by making our devices wireless. This would mean customers being able to collect data from anywhere in the world via an App."

This ever-growing comprehensive range of indicators, signal amplifiers, data loggers and wireless transmitters has been designed to complement the extensive range of load cells, torque transducers and pressure sensors, and the range has developed to ensure that customers

have access to the most accurate, up-to-date, and cost-effective devices available.

Another new development is in the Airport environment, where Interface Force have begun to provide wireless monitoring of equipment on, for example, luggage carousels, and this product among many others have helped Interface Force to have a very successful past 12 months especially.

Interface Force's product reliability is second to none and all of its product lines have to match this standard before ever being recommended to customers. Interface is the world's trusted leader in technology, design and manufacturing of force measurement solutions. Its clients include a "who's who" of so many industries, and the company's engineers around the world are empowered to create high-level tools and solutions that deliver consistent, high-quality performance.

For more information:
T +44 (0)1344 776666
info@interface.uk.com
www.interfaceforce.co.uk





UNISIG

is the leading producer of gundrilling and BTA deep hole drilling machines

Our industry-leading customers around the world rely on UNISIG® deep hole drilling technologies for powerful, intuitive capabilities. We engineer our machines to handle a complete range of applications, and support them with our high level of expertise and service.

Standard Gundrilling Machines: Job Shops & Production Drilling



Production Deep Hole Drilling and Automation: Modular Machines for Production Drilling



For more information, please visit our website: www.unisig.com

Machines • Tools • Automation

UNISIG machines, engineered and manufactured in the USA

UNISIG
DEEP HOLE DRILLING SYSTEMS

Deep hole drilling experts expand production capability, to meet increased demand



We like to showcase industrial best practice and, in this issue, Best Practice Recommends UNISIG for its leading global machinery manufacturing specialism in deep hole drilling.

UNISIG is a world-leading American producer of deep hole drilling machines, supplying to everyone from smaller bespoke companies to large original equipment manufacturers (OEM). As leading experts, UNISIG has the expertise to provide precision-driven machinery for every job, with its complete deep hole drilling solution from machinery, tools to automation.

Since its inception in 1981, UNISIG has built up an enviable position in the industry with its unrivalled production of gun drilling and deep hole drilling machines. In 1995, it was acquired by Entrust Manufacturing Technologies and moved to the Milwaukee headquarters.

With a dominant installation presence across the world: Europe, Asia and America, UNISIG has a strong customer base across the aerospace, automotive, energy, firearms, hydraulic cylinders, military and medical sectors.

UNISIG has the design engineering expertise to design and develop machinery for other deep hole procedures from: BTA, gun drilling, counterboring/reaming, pull boring, trepanning, skiving and roller burnishing, bottle boring, bottom forming and many more.

Boring and Trepanning Association (BTA) drilling



has been revolutionised by UNISIG's high powered B-series, allowing precision drilling of 25mm to 500mm, up to 20m deep, perfect for the vast majority of BTA drilling applications. For rigid, deep hole drilling, the larger swing B-series has a powerful drive, with state-of-the-art smart controls, giving high usability with unlimited capability.

Philipp Steimle, Sales and Service manager for Europe talked us through planned developments for the next 12 months.

"As we have seen a lot of disrupted supply channels, our company is expanding its own manufacturing department. The recently installed Kellenberger CNC grinding machine will allow us to finish all the drilling spindles in-house. The next eight weeks will see us installing a laser cutting machine and a CNC-press brake as well as welding stations, so that we can do all the



guarding and coolant reservoirs in-house to avoid delays in our machine building.

One of our latest developments was the UNE6 series for medical instrument drilling. With machines that feature two independent drilling units on one machine bed and a robot work piece loading and even an automatic tool changer, this was a game changer for the medical industry. The product was a big hit in the market and we have struggled to build them fast enough! We are investing in more in-house production rather than external third parties, to keep on top of our orders."

In 2019, the Milwaukee facility at global headquarters was already expanded by over 100,000sqft, hugely expanding production capabilities. The recent CNC grinding machine addition will certainly propel production further. With all the production facility currently upgrading, The UNISIG Tech Centre in Milwaukee

has continued pressing forward with testing and innovative design engineering. If a customer needs a custom-built drilling machine, the expert team of engineers can design a prototype quickly, to specific requirements.

UNISIG ships machinery and parts quickly across the world, offering routine servicing and repairs both remotely and on-site. Installation can be carried out anywhere across the world, by the expert team of in-house engineers.

The UNISIG website has the full machinery range, with high-resolution photos and full specification capability, including hole depth (in mm.)

Best Practice Recommends UNISIG for its expert, high-quality machinery in the deep hole drilling industry, with its decades' long commitment to innovation and customer service.

The UNISIG team will be showcasing its innovative, AI-driven machinery capability at IWA Outdoor Classics at The Exhibition Centre in Nuremberg from the 2-5 March and later in the year at EMO Hannover: the world's leading trade fair for production technology from the 18- 23 September.

The team will be happy to answer enquiries from across all sectors.

For more information on UNISIG, see the website below:

www.unisig.com





What's become clear after the COVID-19 is that resilient businesses share common traits.

These companies can react quickly and decisively to protect workers while keeping business running. They can adapt processes and product lines, often using flexible collaborative automation to make those changes efficiently and cost-effectively. They begin to look into the future, so they can adapt and position themselves for the "new normal."

When the first robot applications appeared, the advantages were quickly recognized. This made collaborative applications the fastest-growing segment of the robot market, which is still expected to continue. Therefore, the move to automation is not unusual. Why?

Collaborative application solutions are fast, easy and affordable for efficient and productive processes during and after a crisis. Furthermore, the collaborative applications solutions give several opportunities.

What does automation do other than being a productivity tool? One key advantage is that it gives the manufacturers flexibility, and this help ensure the wellbeing of the workers.

By automating undesirable tasks, the company can put employees into higher-value and more desirable positions. During and after a disruption, collaborative automation keeps production running while skilled workers focus on jobs where their unique capabilities provide the most value.

Manufacturers need to assess their own supply chains and ensure that they have continuity plans in place. When supply chains are at risk, manufacturers must look for other ways to make sure that their supply chain is safe. In other words, they move their focus, and look for other solutions.

So, what's next? For the first time in modern manufacturing history, demand, supply and workforce availability are affected globally at the same time. The changes manufacturers make now will help define whether they emerge as a resilient business that finds new ways to grow and succeed through the crisis and whatever comes next. Collaborative applications present manufacturers with new opportunities to build resilience and adaptability in productivity, competitiveness, and workforce.

All the answers can be found in our White paper. Download it via the QR code and learn more today about the "new normal" in automation.

OnRobot A/S

+45 53 53 57 37
sales@onrobot.com

OnRobot
DOWNLOAD YOUR FREE WHITEPAPER

Automate Packaging with RG6 Grippers at Pluspack, Denmark



For several generations, Plus Pack has been at the head of the pack among producers of food packaging. The company has continually developed new products that are more or less environmentally friendly, having received several international awards for this work. And not only the green revolution, but also the working environment for their more than 200 employees is given high priority by the company. The working environment in particular is one of the reasons for focusing on automation. "It is used particularly where heavy and monotone tasks can be taken from the employees to be done by collaborative robots," says strategic Project Manager, Bastian Fietj, "The work station where we use the gripping arm from OnRobot replaces a packaging process where the operator used to work manually on stacking products on top of each other, pressing out the air between them. The manual process required a lot of repeated heavy lifting and a lot of stress on the shoulders. We have removed this physical strain from the employees." he says.

Unproblematic solution

And certainly, there is no reason to wait before automating the production. At Plus Pack, the implementation of the End-of-Arm tool from OnRobot has been fast and unproblematic, says Project Manager Simon Laigaard, "In our opinion, the OnRobot gripping arm is easy to work with. By adjusting four screws, we can change the fingertips on the gripping arm, making it precisely suited for the individual product. If we had opted for building separate tools for each product, the cost would have been significantly higher than with this solution, where the gripping arm is easily adjustable."

"We ran some tests with the gripping arm in the lab, and



the programming was done in a few days. After that, it took just 30 minutes to implement the gripping arm at full speed in the packaging line." he says.

A definite recommendation of OnRobot

As stated, one of the reasons to use collaborative robots is the working environment. Another reason is productivity, which becomes very flexible by using gripping arms from OnRobot, says Bastian Fietje, "We manufacture a lot of different products, and we have a lot of different customers, for whom we manufacture customised packaging solutions. For this reason, we are always trying to optimise the products and the packaging process for each customer, which is something OnRobot's End-of-Arm tools help us do."

If you are planning to automate your production, I would definitely recommend gripping arms from OnRobot, as they offer the flexibility to create customised solutions suitable for specific needs. This is something we have never seen from other suppliers of End-of-Arm tools, he said.

<https://onrobot.com/en>

OnRobot

OnRobot Palletizer

Powerful, modular palletizing system that delivers flexible palletizing automation to companies

Vikram.kumar@onrobot.com



MANUFACTURERS OF POWDER COATINGS

CHALLENGE US TO FIND YOU A SOLUTION

Providing you with quality powder coating from our UK manufactured stock range. Also offering colour matching for your non-standard needs.

Proud to be UK manufacturers since 1984.



Please visit our website: www.thermaset.co.uk

Call: 01827 55777

Email: enquiries@thermaset.co.uk

Thermaset Ltd, Claire Works, Anders, Lichfield Road Ind Estate, Tamworth B79 7TA, England

The model TR1 Tru-Trac® linear measurement solution



Process automation, machine construction, and increasing the efficiency of systems or installations require highly precise equipment, and encoders are such equipment. The encoder is part of the automation system, thanks to which it is possible to determine the efficiency of various types of machines. With proper knowledge of encoder functionality and the ability to use them, it is possible to increase the company's productivity - in other words, encoders save time and money and improve results. The encoder allows control of the movement, drive, and operation of individual machine components, and then - most importantly from a business perspective - to optimize operations.

There are several variables to consider when choosing an encoder. The most common are



mounting style, resolution, output type, frequency response, accuracy, and electrical connections. The environment also plays a role: specifically, encoders must withstand a range of conditions such as moisture and dust that can seep into internal optics and electronics.

When applying encoders, selecting the optimum model, and specifying the appropriate configuration are critical for success. Proper encoder selection begins by understanding the role of the encoder in the motion control system.

The Model TR1 Tru-Trac® linear measurement solution is a highly versatile and reliable option for tracking velocity, position, or distance over a wide range of surfaces. It is a compact unit that integrates an encoder, measuring wheel and spring-loaded torsion arm. This unique combination of features makes it a convenient and effective option for applications that require accurate linear measurements.

One of the key benefits of the Model TR1 is its ease of installation. With its compact design, this

device can be installed in a variety of orientations, making it highly flexible for use in different applications. The spring-loaded torsion arm also allows for adjustable torsion load, which further enhances the flexibility of the unit. The threaded shaft on the pivot axis is field reversible, which makes it possible to mount the unit from either side.

The Model TR1 is capable of operating at speeds of up to 3000 feet per minute, which makes it ideal for use in high-speed applications. It is also highly configurable, with multiple wheel material options available. This flexibility allows users to choose the ideal wheel material for their specific application, ensuring the best possible performance and accuracy.

Another key advantage of the Model TR1 is its durable, conductive composite material housing, which minimizes static build-up. This is an important consideration in applications that require precision measurements, as static electricity can interfere with the accuracy of the measurements. The composite material used in the housing also makes the Model TR1 highly resistant to wear and tear, ensuring long-lasting performance and reliability.

Encoders are increasingly becoming the basic elements of automation systems due to their wide applicability but also the effects of their use. They are used, among others, in:

- ▲ Machine building
- ▲ Robotics
- ▲ Automation and sorting
- ▲ Aerospace
- ▲ Food & Beverage
- ▲ Printing
- ▲ Material Handling
- ▲ Mobile equipment, etc.

Contact our team of experts to get your ideal motion control device.

T +44 (0) 1978 262100
sales@encoder.co.uk
www.encoder.co.uk



PUMPS & PUMP UNITS FOR BATCH AND CONTINUOUS PROCESSES

For demanding applications!

- FROM MICRO LITRE PER MINUTE TO 2,400 LITRE PER MINUTE
- PULSELESS, ACCURATE AND REPRODUCIBLE
- WIDE APPLICATION RANGE EVEN AT >150°C: ΔP_s 200 BAR
- WIDE CHOICE MATERIALS, INCLUDING PLASTIC!
- WIDE TEMPERATURE RANGE
- SYSTEM PRESSURE UP TO 325 BAR!

Customized pumps for lab, pilot and production. Also for CIP/SIP/ATEX conditions.



LET'S TALK!

suurmond
engineered solutions

SUURMOND.COM

Suurmond UK Limited and Dynisco join forces to offer melt pressure and temperature sensors and cutting-edge polymer analysis Solutions



Suurmond UK Limited are delighted to announce that we have signed a partnership agreement with world leading manufacturer of melt temperature and pressure transducers and polymer analysis equipment Dynisco. With their European headquarters in Heilbronn, Germany, Dynisco have been, for many years, at the cutting edge of melt pressure and temperature measurement and Melt Flow Indexing machines.

Our agreement will mean that Suurmond are able to support new and existing users of Dynisco sensors with UK based stock of common units and customer specific sensors.

We will also be supporting Dynisco with expanding their influence in the polymer analyser market. Polymer analysers allow operators of

compounding and recycling lines to get 'real time' viscosity values during production.

Founded in 1953, Dynisco is committed to helping customers and providing the tools and services for the polymer industry that give customers a "window into the process".

Today's customers require accurate information that will allow them to validate and if necessary, adjust their process ensuring the products they make meet or exceed their specifications.

The information Dynisco provides allows our customers to keep their process consistent regardless of their global locations.

Post-BREXIT Suurmond are delighted to be able to support Dynisco with efficiently accessing the UK market.

info.uk@suurmond.com
www.en.suurmond.com

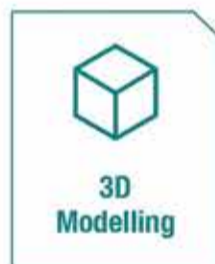


Make your warehouse work smarter

with an optimised solution from BITO



WE OFFER



YOU GET



BITO BECAUSE:

- You'll get the most out of your space
- You can trial prototypes
- You're buying from the manufacturer
- You can visit our Experience Centre to see the products
- You can buy popular products from UK stock

02476 388 852
info.uk@bito.com
www.bitocom

Big benefits from small parts picking in pallet racking

BITO

STORAGE
SYSTEMS

Edward Hutchison, Managing Director of BITO Storage Systems, explains how using pallet racking for small parts storage turns this ubiquitous storage product into a flexible order picking solution.

While constant innovation generates a stream of new intralogistics solutions, 'classic' pallet racking remains the most commonly used storage system. Its relatively low investment costs and flexibility – whether through changing rack configuration, retrofitting special purpose modules or adding extra bays – have made it an indispensable framework for storage and order picking systems.

Of course, many operations use pallet racking as the basis for straightforward storage and retrieval of full pallets, either to fulfil customer orders or as a bulk store for replenishment. But the trend toward shorter product life cycles is increasing SKU numbers. The drive to minimise stock levels for each SKU and improve picking process efficiency to speed up order fulfilment, combined with demands for Just-in-Time



delivery and online retail, is generating a greater need for small parts storage.

This is where the adaptability of pallet racking comes to the fore because small parts picking can be easily integrated within pallet racks. One option is to create small parts pick locations on the reachable ground level, with upper storage levels serving as a buffer store for replenishment. Small parts storage containers will help to store and organise small goods and C-parts – making them available for quick and easy picking.

This will result in a reasonably efficient picking process but ground floor locations within a pallet rack will, of course, be limited. Solutions are therefore required to maximise the available space to create a pick face with sufficient locations for the required SKUs, and enough stock to ensure availability during picks.

Flow shelves can be easily installed into pallet racking to increase the number of pick locations and volume of SKUs located on the ground level pick face. Goods are easily accessible from the front of the racking – the rollers on the flow shelves allow bins and containers containing small items to be picked roll smoothly to the front of the shelf – which makes picking easy. A full container of parts will roll to the operator

each time the empty one at the front removed.

Standard shelving is another option to create flexible small item pick faces within pallet racking. There are several solutions: the first incorporates static shelving at right angles to the racking, with space in between each run to facilitate picking. An alternative option is pull-out mobile shelving that maximises the available space under the racking – though movement of shelving has a negative impact on pick time. A third solution involves static shelving parallel to racking, which makes front items easy to pick. Shelving dividers can be fitted.

Inclined supply shelving within a pallet racking bay will make items clearly visible for picking. Cardboard cartons or plastic bins can be used, though the later option enables preparation in advance at the goods-in area by filling the plastic bin with the items to be picked.

Plastic bins and containers will keep goods protected throughout the intralogistics process and during transport to ensure the quality of products are delivered to the customer in prime condition. It is worth seeking out storage system suppliers that in addition to offering racking, shelving and in flow lanes, also provide a container range comprising a variety of sizes with and a broad choice of accessories. Such a supplier will be able to design the optimum system to fit a given space, maximise the potential for small parts picking and, ultimately, improve fulfilment.

Contact
T 02476 388852
info.uk@bito.com
www.bitosystems.com



“My storage solutions were sorted after booking my FREE consultation with the Business Services Team”

Mike
Bateman

Warehouse Manager



BiGDUG[®]

0330 332 6312

WWW.BIGDUG.CO.UK



INCREASE EFFICIENCY & TALK TO OUR
CUSTOMER SERVICES TEAM TODAY

Recycled and Recyclable OPP

NEW OPP films are now available with a minimum of 30% recycled content. This is from post consumer waste and is accredited and audited by the ISCC. Trials available now.

recycling post-consumer waste Available in a full range of clear, white, matt, metallised, PVdC and acrylic coatings as well as low temperature seal options

Contact
T 01274 685566
F 01274 685878
sales@nationalflexible.net
www.nationalflexible.co.uk

Available as a single web or laminate
 PCR (Post consumer recycle) resin generated from chemically

Recycled and Recyclable OPP

OPP films with a minimum of 30% PCR* Recycled content

PCR Post Consumer Recyclate. Recycled content is from post consumer waste and is accredited and audited by ISCC

TRIALS AVAILABLE NOW

Premier Foods Paxo packaging wins award

Premier Foods decided to replace the PVdC coated packaging film on their Paxo stuffing range as part of their commitment to the UK Plastics Pact.

The challenge to the technical team at National Flexible was to supply a film that:

- ▲ Provided consumers with a fully recyclable solution
- ▲ Incorporated as much recycled content as possible
- ▲ Matched the sealing integrity and performance of the PVdC coated film
- ▲ Maintained full food packaging compliance



The resulting replacement film developed by National Flexible in conjunction with the polymer supplier and the film manufacturer, was 'Highly commended' in 2 categories at the 2022 UK Packaging Awards held at the London Park Lane Grosvenor Hotel:

- ▲ Flexible Plastic Pack Of The Year
- ▲ Resource Efficient Pack Of The Year

These awards recognised that the replacement film had 60% recycled content by combining Post-Consumer Recycled waste (P.C.R.) with industrial regrind, to produce a film which met the Premier Foods commitment to the UK Plastics Pact. Research for the project was over a year in the making and the film was also trialled and approved in conjunction with capital investment in new machinery at the Premier Foods site.

he replacement film also gave the following environmental and sustainable advantages:

- ▲ The carbon footprint was reduced by circa 30% thus reducing global warming potential.
- ▲ Acidification is reduced by circa 25%.
- ▲ Eutrophication is reduced by circa 25%.
- ▲ Photochemical ozone creation potential is reduced by circa 25%.
- ▲ Water consumption is reduced by 40%.
- ▲ Primary energy demand is reduced by 15%.
- ▲ Recycled content of the film reduces the use of virgin material by circa 37 tonnes per annum.
- ▲ The film is exempt from The Plastic Packaging Tax.
- ▲ (L.C.A validation was by Thinkstep using Gabi software)

In summary the replacement film eliminates the use of PVdC, which is disruptive to the recycling of plastics. The new film is 100% recyclable, has a lower carbon footprint, reduces the use of virgin material, and has many sustainable and environmental advantages. This project also demonstrated how collaboration between the technical teams of the customer, the supplier and the film manufacturer can produce a positive outcome. Lydia McCarthy, Procurement Executive of Premier Foods felt that all involved can be proud of what they achieved over the year, whilst George Slack, MD of National Flexible thanked Jon Wriglesworth of Premier Foods for all his work in ensuring that the project had a successful outcome.

National Flexible provide (without commitment) FREE Environmental Packaging Audits. They consider all aspects of the existing packaging operations, including pack design and printing, film selection, pack carbon footprint reduction, machine running speeds and optimum shelf life of the pack contents. These audits invariably result in a resolution in film usage and / or reduced packaging costs.

Please contact Scott McEvoy on (01274) 685566 for more details.

www.nationalflexible.co.uk

TEC-RFID

Everything RFID in One Place

We are experts in helping businesses improve efficiency through RFID solutions. RFID, which stands for Radio Frequency Identification, is a technology system that can identify an object using radio waves. At TEC-RFID, we believe RFID will bring big advances to retail, warehousing, manufacturing, construction and more. We make it as simple as possible.

Contact us for more information by emailing info@tec-rfid.co.uk or visit www.tec-rfid.co.uk

Manage your assets with RFID

Major operations involve hundreds or thousands of different assets and it's easy for valuable equipment to be misplaced or lost. Taking inventory of your assets is a time-consuming and sometimes inaccurate process. That's where RFID Asset Management comes in. With all of your assets monitored by RFID tags and readers, you can know exactly what equipment you have. That information helps prevent losses and helps you make informed business decisions. But the benefits don't stop there.

With RFID, you can track not only the location of the asset, but also its condition. RFID tags enable you to instantly see when equipment was last inspected and when it's due another inspection or to be replaced. This reduces downtime because you can repair or replace important equipment at the right time. It also streamlines your maintenance process.

You can also track the movement of assets, so you get alerts when a piece of equipment has left its designated area. People can also be tagged with RFID wristbands, which can be vital when moving heavy equipment, to improve safety by ensuring each worker is out of the way.

RFID Asset Management is a solid

investment for any business that has a lot of valuable assets to track. Benefits of RFID Asset Management include:

- ▲ Gaining real-time visibility of your assets
- ▲ Saving time over manual stocktakes
- ▲ The ability to locate assets using RFID
- ▲ Tracking the movement of assets
- ▲ Improving maintenance
- ▲ Improving compliance

If you have valuable fixed assets and are having trouble keeping track of them, an RFID asset management solution can not only save you time with manual tracking, but also save you money by reducing lost assets and improving maintenance.

RFID Asset Management is suitable for large or small businesses, with flexible monthly plans available.

Ready to get started with RFID asset management? Contact TEC-RFID for a free consultation and online demo.

TEC-RFID,
 T 0844 870 7873
info@tec-rfid.co.uk
www.tec-rfid.co.uk



DISTINCTLY DIFFERENT THERMAL INKJET

Polytjij UK

POLYMER THERMAL INKJET TECHNOLOGY

- Maximum printability
- Maximum product uptime
- Maximum reliability
- Maximum flexible installation
- Maximum value

Polymer thermal inkjet technology is unique. It is the only TIJ 1.0 and TIJ 2.5 thermal inkjet ink containing polymer resins.

Like other printing technologies such as continuous inkjet (CIJ) and thermal transfer over printer (TTO), it is the polymer resins that offer the high adhesion on glass, metal and most plastics used in the fast-moving consumer goods market.

Hence POLYTjij inks offer superior adhesion of more than 50+ rubs on most substrates whilst offering long production-ready times. This means our inks offer the best ink delivery volume of any nonporous cartridge on the market today, thus maximising your production uptime.

Ptjij BP23

David Whittington, Managing Director
 E: info@polytjijuk.com M: 07951 974004 T: 01942 511405

For more information visit:
www.polytjijuk.com

PROMLift UK provide complete equipment and solutions for every warehouse



planning, logistics optimisation, automation and all of the MHE equipment.

We are happy to work with existing plans and contractors to help deliver the best solution for

your warehouse and operation. For more information, see below.

T 01858 517 896
T 01858 458 280
s.noble@promlift.com
www.promlift.com



PROMLift UK is bringing the companies unparalleled levels of support and products to the UK market. As part of the PROMStahl group of companies we manufacture leading products for all areas of the warehouse from dock levellers, industrial doors and modular multi level car park systems.



With over 30 years of knowledge in the MHE industry Steven Noble is working alongside the rapidly growing 20+ PROMStahl UK team to develop the MHE division for the UK market, with the aim of emulating the incredible levels of service, growth and success we are having with UK industrial dock levels and doors.

It is now possible for us to take a customers project from the warehouse planning stage to a completely operational warehouse. Offering a complete turnkey solution. This includes office builds, warehouse



Contact

01858 517 896
01858 458 280
s.noble@promlift.com
www.promlift.com



For us, a bench is not just a bench

Treston is not just a furniture manufacturer. We offer our customers comprehensive know-how and insights on how to make their workstations and workspaces as functional as possible.

Ergonomics is always taken into account when designing a workspace and because Treston products are modular, the workstation solutions

we design are cost-effective and comply with the principles of the LEAN philosophy. Our range of products with ESD protection and our expertise in ESD matters help our customers obtain safe and functional workspaces for the most demanding working conditions.

Our long history as a furniture

manufacturer, more than 500,000 workstations delivered, and 15,000 customers globally are a guarantee that we know what we are doing.

In projects, our expert sales staff go through the customer's needs, goals, current state, and processes. Based on the conversations, we then make design proposals for the spaces and



Work smarter, not harder



ERGONOMICS | ESD | LEAN
treston.com

Workspace that adapts to your needs, not the other way around

The widest range of accessories on the market
Future-proof

Suitable virtually to any environment, application and industry
Concept workbench

Multiple sizes and combinations available
Productivity and well-being



DESIGN YOUR PERFECT WORKSTATION

TRESTON



The Treston 3D Configurator can be used to design an industrial or technical workstation that best meets your needs. To get started, all you need is a mobile phone or a computer with internet browser; no downloading is required and using the software is free of charge.

3D.Treston.com

furniture. Our design engineers can make the exact type of dimensional drawings that the customer needs.

Our retailers are also experts who can provide the services that you need flexibly and comprehensively. We also support our network of retailers through expert services.

At Treston, our wide selection of products and modular and adaptable workstation solutions ensures that our customers find furniture solutions to meet their individual needs cost-efficiently. Being a manufacturer enables us to flexibly create customised solutions.

Easy workspace design with the 3D Configurator Designing an individual workstation is easy and quick with our 3D Configurator software, available at 3d.treston.com. The 3D Configurator guides you through the selection of all the necessary modules and accessories for your workstation.

When you have completed the design, you can send a request for a quote electronically, or save the drawing and supply list in PDF format on your own computer with a click of a button. We also offer an assembly service.

There is a comprehensive network of installation services that we use regularly at Treston, and we can also recommend, especially for use in larger projects, to speed up the implementation of changes to manufacturing facilities.

At Treston, our expert sales staff and network of retailers, our modular products, and our opportunity as a manufacturer with its own factory to form customised solutions, guarantee that we can create an efficient and functional workspace for our customers.

Do not hesitate to contact us if you are looking for a smart and functional solution for your working environment.

For more information, see below.

T +44 (0)1635 521521
salesuk@treston.com
www.treston.com

TRESTON

Drip-It adjustable gravity oilers

A Simple no moving parts, no power required oiler with our Eco Range oil system making this environmentally friendly with all parts recyclable.

The professional way for your industrial Chains, Slides, Bushes Etc.



Drip-It® Eco - Adjustable Gravity Feed Oilers.

All our Drip-it systems are built in the UK and designed with the customer in mind to give you a system to meet your needs. Drip-It Oil reservoirs are made of recyclable high-impact plastic to withstand most industry conditions inside or out and come in a convenient 2Lt and big brother 5Lt.

To control the required oil flow we only use high-quality valves to give the best flow control. Drip-It will help with a reduction in friction, wear to components, reduce stretch to chains and help with corrosion. This, when all put together can help reduce downtime and reduce your power consumption by keeping your machinery running smoothly.

We Build the systems for you, you get a simple self-Install kit with everything you need to get you up and running quickly, to achieve a quick return on investment.

Industry Applications:

- ▲ O E M
- ▲ Recycling.
- ▲ Engineering.
- ▲ Food.
- ▲ Steel Works.
- ▲ Quarrying.
- ▲ Transport. Farming.
- ▲ Treatment works.
- ▲ Robotics.
- ▲ Technology.
- ▲ Mining.
- ▲ Construction.
- ▲ Sewage treatment. Maritime transport.
- ▲ Wind power.
- ▲ Rail.
- ▲ Logistics.
- ▲ Warehousing
- ▲ Bulk Storage
- ▲ Tunneling
- ▲ And Many More!

Contact us to discuss your requirements.

www.stoptite.co.uk/product/drip-it-gravity-oiler/



Experts in stainless steel fasteners

Precision Technology Supplies (PTS) was established in February 1988 by Stephen Edwards. Based in East Grinstead, West Sussex, PTS is a stockist and distributor of stainless steel fasteners, offering a one stop shop for a wide range of quality products, with fast delivery times and efficient customer service.

"Our whole ethos is about offering a quality product and service to our customers," said Andy Knight, Sales Director.

With over 30 years of experience in managing a growing number of customer production lines on-site, PTS can be counted on to deliver 'just in time' delivery to their OEM customers in 90



countries across the world. Within the UK, PTS provide numerous variations of Direct Line Feed management to suit individual needs. PTS has the facilities to plate standard and special screws. One of their most popular is the 'Touch-Dry' Chemi-Black process, also known as Black Oxide. With this

method, the finish is so thin that it doesn't affect any dimensional tolerances. In addition to this, PTS also offers finishes in gold, nickel, silver and zinc. What's more, PTS provides patchlocking, ideal for vibration resistance and added torque performance, and offers screw modifications.

PTS always makes sure to exhibit at the bi-annual Fastener Fair in Stuttgart, and were in attendance during the event in March this year. If you would like to find out more information on their full range of products and services, head to their website or use the contact details below.

T 01342 410758
www.pts-uk.com

IEAs Sensor Product of the Year 2022

- USB 2.0 - Compatible with Windows 8 | 8.1 | 10 | 11
- Pressure measurement range up to 5,000 bar
- Superior Silicon on Sapphire sensing technology
- Custom software measures and records pressure data from up to 16 devices
- Create branded test certificates and reports

ESI Technology Limited

ACCURATE DIGITAL PRESSURE MONITORING SOLUTIONS

www.esi-tec.com

RMIG Solutions

we make ideas come to life

RMIG is the world's largest manufacturer and supplier of perforated metal and its related products.

We know our customers' requirements for price and quality and meet their demands with uncompromising service.

Not only do we offer standard and bespoke perforated metal sheets, we are able to offer you a range of secondary operations as detailed below.

Complete solutions
With a continued investment in the latest equipment and a network of professional partners we are able to produce prime quality products and solutions - from a simple perforated sheet to the fully formed and coated custom made part.

Cutting
We can cut and shape perforated sheet to meet the needs of your final application.

Levelling
For some applications a high degree of flatness is required, we have processes in place to ensure our perforated coils and sheets meet with your most demanding requirements.

Rolling and forming
We can roll, bend and form perforated sheets to match your design.

Aesthetic finishes and protective coating
We can offer powder coating and hot dip galvanizing solutions to meet your specifications.

For more information please contact us tel: 01925 839610 | email: info.uk@rmig.com | www.rmig.com

BEPC Encoders

Encoders are indispensable wherever precise measurement and supervision of speed, direction of travel, distance travelled, and position of mechanical elements or number of rotations performed is necessary.

In any case, the encoder invariably affects the proper and efficient functioning of machines and systems. It is therefore a small investment in great profits of enterprises.

BEPC offers two major types of encoders, linear measurement encoders, as the TRI Tru-Trac™ or New Draw Wire Encoder (LCX), and rotary encoders like the Model A58HE which is an

EtherCAT or PROFINET-ready. Linear encoders have a read head and track. This will produce an output for distance travelled typically in pulses per inch (PPI).

Where rotary encoder converts the angular movement of a rotational device and will have an output for rotation about the fixed axis typically in pulses per revolution (PPR). BEPC encoders are increasingly becoming the basic elements of automation systems in industries as:

- ▲ Machine building
- ▲ Robotics
- ▲ Automation and sorting

- ▲ Aerospace
- ▲ Food & Beverage
- ▲ Printing
- ▲ Material Handling
- ▲ Mobile equipment, etc.

If you still have questions as to how an encoder works in your specific application, please feel free to call a Customer Service Representative for Technical Support.

For more information, see below:
www.encoder.co.uk
sales@encoder.co.uk
 01978 262100

Sauer Compressors UK Ltd - Compressor Solutions for all your applications

Sauer Compressors UK Ltd supply reciprocating compressors for high pressure air or gas applications. Our compressor manufacturing knowledge can be traced back over the past 135 years in Kiel, Germany, where the head office and main assembly plant is still situated today.

Sauer Compressors provide oil-lubricated or oil-free types for air and many other gases including hydrogen, helium, nitrogen, CNG, synthetic and inert gases.

The Sauer range includes industrial products, commercial shipping, naval and offshore products with standard ranges of pressures and volume flows with the ability to manufacture bespoke compressor variants for specific gas compositions, customer requirements or specifications.

Hydrogen

The HAUG Sauer range of compressors stand out by their oil-free and hermetically gas-tight design. HAUG hydrogen compressors are based on more than 30 years of experience. As the compressors are completely dry-running and oil-free, there is no danger of oil-vapour contamination of hydrogen and the equipment downstream. The contaminant free Hydrogen compression is ideally suited to hydrogen storage for fuel cell applications.

Helium, Nitrogen & CNG

For more than 50 years Sauer Compressors have specialised in the development and production of gas-tight compressors. These are specially designed for the gas they are compressing and represent the most efficient and safe solution, so it is no surprise that leading research institutes, universities and industries only trust in SAUER gas compressors. Designed to be (hermetically) gas-tight to prevent valuable or hazardous gases from escaping. They are designed for continuous operation with attention to valves with modified stroke and spring suspension, optimised lubrication and efficient cooling. Even compression of high-purity nitrogen (99.999 %) is no challenge.

Sauer Compressors UK Ltd operates from a modern, well-equipped workshop with supporting stores and offices. Sauer design and undertake compressor packaging from skid mounted sets, through to acoustic enclosures and fully containerised and ventilated solutions. We also manufacture mobile compressor trailers and provide a ready-to-use hire fleet of air or nitrogen compressors.

All compressors are offered with the most recent intelligent controller, the ECC4.0. The HMI and PLC allow management of up to 8 compressors in a single network, to optimise running hours for better service intervals, with easy connection with all common interfaces (e.g. Modbus, Profibus) giving flexible integration into higher level control systems.

Sauer Compressors UK Ltd provide compressors, installation assistance, service and repairs for all Sauer equipment within UK & Eire, with emphasis on quality products, teamwork and customer focus, certified to ISO 9001/14001/45001, Joscarr registered and Safe Contractor members. Sauer are active members of British Compressed Air Society and Hydrogen Fuel Cell Association.

For your high pressure air or gas application, Sauer Compressors UK Ltd has the expertise and product range.

www.sauercompressors.com



Motion Feedback

in Packaging, Printing & Labeling

BRITISH
ENCODER
PRODUCTS COMPANY

These encoders just make sense.

E: sales@encoder.co.uk
T: (44) 01978 262100
W: www.encoder.co.uk

ERG Plastic Fabrication Ltd

At ERG Plastic Fabrication Ltd, we specialise in the high quality custom fabrication of process industry vessels and associated components from GRP and composite plastic materials.

With almost 40 years experience of supplying tanks, scrubbers, filters, silos, vessels, piping and ducting, we are sure to be able to meet your requirements with high quality products at competitive prices.

Plastic Fabrication – Materials of Construction

Depending on your specific requirements we can fabricate from a wide range of common plastic and composite materials including:

- PVC – Poly Vinyl Chloride
- UPVC – Unplasticised Poly Vinyl Chloride
- PPVC – Plasticised Poly Vinyl Chloride
- PP – Poly Propylene
- HDPE – High-density polyethylene
- GRP – Glass Reinforced Plastic

For more information, call 01403 291 000, email info@ergpf.co.uk or visit www.ergpf.co.uk

Oliver Valves secures 3-year contract in North America

Oliver Valves has secured a fixed 3-year contract to supply a large range of valves to the Kaybob Duvernay project in North America. Located in Fox Creek, Alberta, Canada - Kaybob covers an area of 330,000 acres, equivalent to 4/5 times the size of London and is estimated to produce 22,000 barrels of natural gas per day.

Almost half-way into the contract, Oliver has supplied a significant number of Instrument Manifolds, and Reduced and Full-Bore Double Block & Bleed valves from our sister company Twinsafe, with injection and sampling probes, in orders placed so far worth over £500,000. Oliver engineers carried out strength calculations that were needed to gain approval and to obtain Canadian Registration Numbers (CRN),

which is a legal requirement for pressure rated products to be installed and operational in Canada.

An exciting project for Oliver's to be a part of explains Martin Orme, Key Account Sales Engineer. "We have worked with distributors and energy contractors in the U.S and North America for such a long time that our experience of designing and developing valves for specific applications with clients is largely the reason why Oliver's are selected for major projects such as this."

Valve safety, performance and manufacturing quality are the cornerstones of Oliver's success and their strong customer relationships are what set them apart from other suppliers. Another unique strength

is their dedicated Research & Development facility in Knutsford, England.

Martin continues, "Obtaining relevant documentation and registrations like CRNs can be an arduous task, but by having a dedicated research, development and testing centre, we're able to meet the most stringent of end-user specifications such as we have done on this scope of work."

Oliver Valves and its sister company Twinsafe, who specialise in pipeline valves, work with clients around the globe on oil, gas and hydrogen projects to provide world-class valve solutions that include Zero-rate A valves for hydrogen applications. Visit their website for more details at: valves.co.uk.



Custom DN600 wedge gate valves, farlington water treatment works



When there was a requirement for custom wedge gate valves to facilitate the transition to new metric pipework at a major water treatment works, T-T Flow stepped in to provide the perfect solution that would also maintain the ability to isolate flow.

The problem

Operated by Portsmouth Water, Farlington Water Treatment Works is a major facility supplying thousands of homes and businesses in Portsmouth, Havant and surrounding areas in Hampshire.

As part of a refurbishment at the treatment works, the contractor needed a smart solution to transition from old imperial legacy pipework to new metric pipework while also maintaining the ability to isolate the flow.

When the appointed framework valve holder was inflexible to accommodate the challenge, T-T Flow stepped in to provide a robust and reliable long-term solution that fully meets the brief.

The solution

T-T Flow was chosen to supply eight 600mm metal seated isolating wedge gate valves rated to 16 Bar. The valves have custom flange drillings - one side metric (EN1092 PN16), and the other side imperial (BS10 Table D).

Working through a merchant, we supplied eight DN600 PN16 metal seat wedge gate valves conforming to BS5163 and hydraulically tested to EN12266. The full-bore valves feature precision machined weld-overlay leaded gunmetal seating faces able to withstand higher flow velocities. For reduced friction, the wedge gate valves have non-rising stainless steel rolled threads, a thrust-taking bonnet assembly, and are manufactured from ductile iron coated in a durable WRAS listed fusion bonded epoxy coating.

Wedge gate valves lend themselves to wide ranging flow isolating duties for media such as potable water, raw water, wastewater and low solid content sewage.

T-T offers metal seat and WRAS approved resilient gate valves from DN50 to DN1200 rated to 16 Bar, with larger diameters and pressures available to accommodate any application. To complement the gate valve range, we also stock WRAS approved swing check valves.

A full range of valve accessories including tapered stem caps, handwheels, reduction gearboxes (bevel and spur), electric actuators and custom operating equipment such as extension spindles is also available.

Explore our comprehensive range of gate valves, or check out our complete range of valve types at www.ttpumps.com. For help finding the right product for your application, chat to our experts on +44 (0)1630 647200.

We Innovate Valves. We Build Valves. We Are Valves.

World-leading
Valves for Hydrogen, Carbon Capture, Topside, Subsea, and Pipeline Applications.

<p>olivervalves Instrument & DBB Valves</p> <ul style="list-style-type: none"> • Manifolds, Needle, Check and DBB Valves to 22.0k psi • Cryogenic • Severe Service 650°C, 15k psi • Forged & Bolted Construction 	<p>olivertwinsafe Pipeline Valves</p> <ul style="list-style-type: none"> • 1" to 20" Bore Size • High Temperature • High Pressure • Cryogenic • API 10K Design 	<p>oliverhydcovales Hydrogen & Carbon Capture Valves</p> <ul style="list-style-type: none"> • Instrumentation, Ball, Needle and DBB Valves for Hydrogen and Carbon Capture Applications • Pipeline Ball Valves up to 18" • 10k Ball Valves for Hydrogen Fueling Stations 	<p>olivervalvetek Subsea Valves</p> <ul style="list-style-type: none"> • Diver & ROV Operated Needle Valves • Ball Valves Up to 10k • Manual & Hydraulic Parallel Block Gate Valves 3/8", 1/2", 3/4" and 1"
-------------------------------------------------------------------------------------------------------------------------------------------------------------------------------------------------------------------------------------------------------------------------------	------------------------------------------------------------------------------------------------------------------------------------------------------------------------------------------------------------------------------	--------------------------------------------------------------------------------------------------------------------------------------------------------------------------------------------------------------------------------------------------------------------------------------------------------------------------	-----------------------------------------------------------------------------------------------------------------------------------------------------------------------------------------------------------------------------------------------------------------

We Manufacture Valves for Global Energy Projects.
Find Your Local Supplier Call **+44 (0)1565 632 636**

Reliability Under Pressure
+44 (0)1565 632 636 | sales@valves.co.uk | www.valves.co.uk
Oliver Valves Ltd, Parkgate Industrial Estate, Knutsford, Cheshire, WA16 8DX, United Kingdom

FLOW OPTIMIZATION SECOND TO NONE

BÖRGER®

EXCELLENCE - MADE TO LAST

THE NEW BLUELINE NOVA ROTARY LOBE PUMP

The BLUEline Nova sets new standards in pump technology. With or completely without casing protection – the BLUEline Nova achieves unrivaled volumetric efficiencies.

Made for one another – the newly developed DIUS rotors in combination with the flow-optimized pump chamber ensure perfectly smooth running at pressures of up to 12 bar.

www.newblue.com

Börger UK Limited • East Wing • Old School • Watling St. Gailey • Staffordshire • +44 1902 798977 • uk@boerger.com • www.boerger.com

The DOLD Safemaster W series

With ongoing advances in manufacturing processes and automation, OEM's are embracing new technologies such as auto guided machinery and vehicles in order to streamline their manufacturing capabilities. Whilst clients benefit from this new technology, they also have to carefully consider the safety risks in order to keep both operators and machinery safe in this highly automated environment.

The DOLD Safemaster W range of safety control products is ideally suited for wireless estop communication and control which is required to manage this environment. The DOLD Safemaster W series is approved for use in safety applications up to Cat.4 /PI e or SIL 3 rated wireless safety applications, and provides clients a much greater flexibility over conventional 'wired solutions.' It offers safe

signal transmission to ensure a high level of availability, even in rough and difficult to access plants and manufacturing/processing environments. Safe radio transmission of emergency stop functions offers additional flexibility in protecting hazardous areas.

Fully approved by TUV Rheinland, the DOLD Safemaster W range offers solutions covering Wireless Emergency Stop and control of a single machine, control and E-stop using a Wireless Enabling Switch, through to the UH6900 system in either Pair Mode, or Group Mode for multiple machinery control.

T +44 (0)1245 324432
 admin@dold.co.uk
 www.dold.co.uk



Fluid Carrying Flexibility Swivel Joints

- Articulated Pipework
- Torsion In Hoses
- Rotating Cylinders

- Swivel joints allow pipework to rotate whilst carrying fluid under pressure 1/4" to 40" and beyond.
- Vacuum to over 20,000psi.
- Stock and bespoke production.
- Unique bearing/seal design for longer life.
- ISO 9001 CE marked where applicable.

Rotaflow
 the swivel joint specialists

Tel: +44(0)1663 735003
 E-mail: sales@rotaflow.com
 www.rotaflow.com

Rotaflow FV Limited | Rotec House
 Bingswood Trading Estate
 Whaley Bridge | High Peak | SK23 7LY | UK

The Path to Better Indoor Air Quality

Our indoor air quality monitors help you maintain a better indoor environment where people can breathe clean air and stay healthy.

Measuring and recording CO₂ levels and air quality our devices automatically upload all readings to the EasyLog Cloud, providing constant real-time measurements of the conditions wherever you are.

EasyLog

LASCAR electronics

Your data, anytime, anywhere

www.lascarelectronics.com

Lascar Electronics PanelPilot B: Ruggedized Power Supply for undercover surveillance



Active in the government security market since 1984, MIB Electronic is a well-known manufacturer and supplier of specialised undercover surveillance equipment. Providing and serving government, defence, and law enforcement agencies across the world.

MIB Electronic pride themselves on their ability to design, develop and manufacture a wide range of high-quality equipment. This equipment includes undercover surveillance smartphones, mini pan, tilt and zoom camera systems, laser, and IR audio surveillance devices, alarm system sensors, and much more.

One of MIB Electronics' recent projects involved building Ruggedized Power Supply units for outdoor surveillance applications. The brief was very specific: the units needed to be weatherproof, hard-wearing, suitable for outdoor power supplies and able to withstand harsh environments.

The need for a display was also important, a display that provided valuable visual feedback by showing the voltage and status of the battery was essential. After several attempts at finding a product that suited both the application and their client's needs, MIB Electronic discovered the SGD 21-B from Lascar Electronics. A low-cost, ultra-low-power, sunlight-readable, single-channel voltmeter with a sleek, monochrome 2.1" e-paper dot matrix display.

"The SGD 21-B has an ultra-low power consumption along with a sun-readable display, both very important points for this application. The SGD 21-B also provides a quick and easy visual feedback, informing the user about the status of the battery pack."

With the use of Lascar's **SGD 21-B**, MIB Electronics successfully created the battery pack with the capacity to manage multiple output options to power surveillance equipment in a range of demanding situations including bad weather conditions.

Lascar Electronics
 T 01794884567
 sales@lascar.co.uk

DynamicAIM Building safety and your digital transformation journey

Scan me to play

cadline

DynamicAIM is an innovative solution for the management of digital asset data

Working in partnership with **Itair** to tackle building safety

cadline
 a vinzero company
 cadline.co.uk

EUROPEAN SPRINGS & PRESSINGS

a company of **LESJÖFORS SPRINGS & PRESSINGS**

Complete service support from design to manufacture

We offer full design and production of standard and bespoke metal components in a comprehensive range of materials.

Our products range from tension, extension, compression, torsion and gas springs, to wire forms and metal pressings.

For all enquiries please call us on: +44 20 8663 1800 or email us at: sales@europeansprings.com

Institute of Steel Metal Engineering (ISME) Institute of Spring Technology (IST)

MADE IN BRITAIN

Watlow® completes acquisition of Eurotherm®

St. Louis, MO - Watlow®, a designer and manufacturer of complete industrial thermal systems, is pleased to announce that it has completed its acquisition of Eurotherm® from Schneider Electric Company®, the global leader in the digital transformation of energy management and automation, on October 31, 2022. The terms of the transaction were not disclosed.

Eurotherm is a premier provider of temperature, power and process control, measurement and data management equipment, systems, software and services for global industrial markets. The company employs about 650 people worldwide, with headquarters in Worthing, U.K. and core manufacturing

operations in Ledziny, Poland.

Rob Gilmore, Watlow's CEO, said, "We are excited about Watlow and Eurotherm and all we will accomplish together. This acquisition aligns with our vision of providing innovative thermal products and technologies that help increase our customers' competitive advantage. The combination of Watlow and Eurotherm products and technologies will create new global opportunities for our collective customers and allow us to focus our advanced thermal systems in important areas."

Watlow will establish Eurotherm's sites in Worthing, U.K. and Dardilly, France as Advanced Development Centers for

its electronics and controls product offering and plans to invest in Eurotherm's facility in Poland to become Watlow's Manufacturing Center of Excellence in Europe. This additional capacity and capability also provide a path to growth in other parts of the world including the Americas and Asia.

For more information, see below.
www.watlow.com



The future of automation lies with people - not processes



Placing people at the heart of automation is key to the future of industry, says Intoware's Keith Tilley.

Most people will have heard of Industry 4.0 - the powerful concept of using smart technologies such as AI, the cloud, Internet of Things (IoT), wearables and 'real time' data.

This use of digital technology to monitor and manage processes is already improving performance, by streamlining critical work processes and collecting and analysing data for better decision making. However - data doesn't mean a lot without people to use it and in fact, the human element has been somewhat overlooked.

For this reason, the next industrial revolution - Industry 5.0 - needs to put people back at the heart of industrial production, empowering employees to work in collaboration with technology that has been designed around the way they think and work. The key is to combine people, processes and systems harmoniously.

The move to put people back at the centre of industry ensures engagement and satisfaction with technology, gathering feedback and learning from the processes put in place; the human elements that are often missed.

Digitalising human-centric processes such as reporting and training enables data to be collected and analysed to identify 'human bottlenecks' such as gaps in training requirements, different methods used by staff to carry out tasks, and varying recording and reporting techniques, across the workforce.

It also captures and records all the human processes needed to keep things running, such as machine set up, quality assurance inspections, equipment maintenance and repairs, fulfilling compliance requirements more effectively by using photos and video evidence, as well as timestamps and a log of who did each process.

This connectivity between employees and technology reduces inefficiencies and enhances productivity levels, engaging with the workforce to continually improve both workforce and customer satisfaction - something that is vital, yet missed by many companies rushing to digitise critical industrial processes, overlooking the requirements of people at the heart of their businesses.

Visit to find out more www.intoware.com



AUTOMATION MACHINERY

HIGH QUALITY, EUROPEAN MANUFACTURED LASER CUTTING SYSTEMS FOR THE SHEET METAL INDUSTRY

Laser Power up to 40KW

LP Systems Ltd, based in the Midlands, are the UK representatives and distributors for Cutlite Penta (Italy). We offer a full range of Laser Cutting Systems within the Sheet Metal Industry. With our UK based Sales and Service Team, we can manage your concept, through design to installation and after sales care.

We supply our customers with a full 'turn-key package' tailored to suit individual needs and requirements.

We can supply a cutting area from **3000x1500mm** up to **15000x3000mm**

+44 (0)2476 374210

Unit 8,
Centenary Business Centre,
Hammond Close,
Attleborough Fields Industrial Estate,
Nuneaton
CV11 6RY

sales@lp-systems.co.uk

LP-SYSTEMS.CO.UK

COMTRAXX® CP9i delivers touch screen condition monitoring for industrial applications



New touchscreens from Bender offer intelligent condition monitoring and an overview of

connected electrical systems to deliver real-time monitoring, fault diagnosis and alarm in industrial settings.

With an integrated touch display, customised visualisation of

connected systems and intuitive operation, the new displays help engineers, and maintenance teams manage the performance, availability, and uptime of high-value assets.



NEW Bender CP9i Condition Monitor Improve engineering efficiency in industrial applications

- Continuously monitor installations with one holistic overview
- Simple and easy to operate via an intuitive, touch-sensitive display console
- Integration and visualisation of all Bender and third-party devices
- Flexible to suit a range of industrial and commercial settings
- Future-proof technology due to software development
- Available in a 7" or 15.6" display with tempered, non-reflective glass



Available in 7- and 15.6-inch display sizes, the CP9...-I series features a condition monitor with web interface, a display with integrated BMS and BCOM interfaces as well as Modbus RTU/TCP, for connecting to Bender and third-party devices. Measured values, parameters and other data are available via the web interface or display. The 7-inch version is suitable to be mounted in a control cabinet door so that information is highly visible.

Robust construction and solid Bender design mean there are few limits to potential industrial applications, with remote access via LAN, WAN or Internet allowing for diagnosis and maintenance. Typical applications include data centres, wind farm, manufacturing, process, and plant.

The flexible display format provides an overview of connected system parameters, with active visual and acoustic notifications in the event of alarms, with the option of displaying the source and corrective action for any faults that occur.

Lee Slater of Bender UK said: "The CP9...-I allows greater visibility of electrical power system health at a glance. The increased communication functionality also allows the end-users to receive remote information when site access is not always possible, reducing the time taken to identify and rectify developing power systems issues. The CP9...-I is suited to both those with and without an existing building management system".

Continuous hardware and software development means these products are future proof with updates provided free of charge.



www.bender-uk.com

Contact industrialsales@bender-uk.com



Tape Application Solutions for your Industry

With over 50 years of experience in tape application and converting, Enimac srl has over 150 clients in over 35 countries worldwide



contact us
www.enimac.it
sales@enimac.it

Tape Applications Made Easy



MADE IN ITALY

ROTOmax 2.0
Small is the new awesome.

SUHNER

Grinding
Cutting
Roughing
Descaling
Brushing
Polishing



024 7638 4333 sales@abrasivepowertools.com www.abrasivepowertools.com

ROTOmax 2.0

Suhner Quality: Rotomax 2.0. As the name already suggests it is a machine that provides high performance and considerable pulling power.

The new 2.0 kW high-performance brushless synchronous motor with permanent magnet and an integrated frequency converter is unique on the flexible machine market.

The Rotomax 2.0 is a professional machine suitable for continuous hard work and designed to guarantee long life.

It has a clear LED display for a good visibility of the speed. Power unit and control box are completely separated from each other. This way the electronics assembly and the electrical components are protected from dust infiltration.

Applications: polishing, sanding, cutting, deburring brushing and more for processing of stainless steel, metals, plastics, heavy work in foundries, repair and construction of boilers tanks and tubes, mechanical workshops, sculptors...

The ROTOmax 2.0 - at a glance

- ▲ Soft Start
- ▲ Electronic speed control
- ▲ Active brake that prevents prolonged operation
- ▲ Overload protection
- ▲ No self-starting after a power failure
- ▲ Speed range 500 - 13000 in steps of 100 rpm
- ▲ Power input 2.000 W / output 1.600 W;
- ▲ Short and compact design
- ▲ Robust metal housing
- ▲ Turning range 360° horizontally / ± 45° in the lift fork
- ▲ Weight kg 27

T 024 7638 4333
sales@abrasivepowertools.com
www.abrasivepowertools.com

Classifieds

Engineering

100 YEARS
EST. 1919

KINGSTON ENGINEERING

Leading Specialist Manufacturer and Producers of Bespoke Power Screws

Celebrating One Hundred Years Of Engineering Excellence

Tel: + 44 (0)1482 325676
Kingston Engineering Co. (Hull) Ltd
Pennington Street, Hull, East Yorkshire. HU8 7LD, UK
www.kingston-engineering.co.uk

Robotics

Cost-effective solutions for companies of almost any size. Build resilience against future threats. Download your whitepaper.

robot

Adhesive Specialists

AdCo
Adhesive Specialists

AdCo's HD 250 NV is a true standout among industrial-grade hot melt glue guns

Patented Dripless Nozzle

01428 751755
enquiries@adco.co.uk

Pressure Measurement

esi
ESI Technology Ltd

01978 262255
sales@esi-tec.com
www.esi-tec.com

Pressure transducers, transmitters and sensors
Silicon-On-Sapphire sensing technology
From vacuum to 5,000 bar solutions
Tested to ISO9001 and MIL-45208 procedures
Outstanding proven performance
Conform to CE requirements
EX, IECEx and DNV GL certified products

THE HOME OF PRESSURE MEASUREMENT

Test & Calibration

interface
FORCE MEASUREMENT SOLUTIONS

Load Cell, Torque and Pressure Sensor Specialist

www.interfaceforce.co.uk

Surface Technology

CURTISS-WRIGHT

01635 279621 | www.cwst.co.uk

Humidity Control

HUMIDITY SOLUTIONS
Independently better

HUMIDITY CONTROL MADE EASY

01372 571200
www.humiditysolutions.co.uk

Electric Vehicles

BRADSHAW
ELECTRIC VEHICLES

TOW TRACTORS
LOAD CARRIERS
BESPOKE BUILDS
ROAD VEHICLES
UTILITY VEHICLES
PASSENGER VEHICLES

WWW.BRADSHAWEV.COM

Hinges

GOLD & WASSALL
EST. 1790

Quality hinges for over 200 years

01827 63391
sales@goldwassalhinges.co.uk

Springs & Pressings

EUROPEAN SPRINGS & PRESSINGS
a company of LESJOFORS

Complete service support from design to manufacture

We offer full design and production of standard and bespoke metal components in a comprehensive range of materials. Our products range from tension, extension, compression, torsion and gas springs, to wire forms and metal pressings.

MADE IN BRITAIN

For all enquiries please call us on: +44 20 8983 1900 or email us at: sales@europeansprings.com

Air Pollution Control

ERG
Air Pollution Control

Supplier of industrial air pollution control systems to the international process industry.

- Flue gas scrubbing
- Desulphurisation
- Thermal oxidation
- VOC abatement
- Refurbishment projects and upgrades

01403 290000 info@ergapc.co.uk
www.ergapc.co.uk

Cleaning

CLEAN
WORKWEAR RENTAL & LAUNDRY SERVICES

Keep your people safe at work with freshly laundered uniforms delivered on a reliable, regular schedule.

0333 016 9801 | cleanservices.co.uk

Sagging care home sewer replaced to protect residents



A defective sewer pipe at a care home has been urgently replaced by Lanes Group plc drainage engineers to ensure poor wastewater flow rates did not affect residents.

The residential home made an emergency call the Lanes Aberdeen depot for help because foul water was failing to drain properly from sinks and toilet systems.

Lanes drainage engineers responded immediately, knowing that residents in care homes can be badly inconvenienced if defects in wastewater systems are not correct as soon as possible.

A CCTV drainage survey of the site established that the problem was being caused by a 100mm diameter plastic foul pipe that had sagged, disrupting the flow of water into the main sewer.

Lanes Area Development Manager Mark Morrice explained: "Our first thought, always, is to use no dig systems to repair and rehabilitate drainage pipes, because they are usually less costly and certainly less disruptive, which is a big advantage for care homes.

"However, in this case, the pipe had sagged so badly, that a remote access repair like cured in place pipe lining was not appropriate. The only option was to excavate and replace the pipe."

Lanes Aberdeen's experienced excavation and pipe rehabilitation team carried out the work, ensuring they bedded the pipe in ample quantities of pea gravel to prevent it from sagging again.

A new 30m section of plastic pipe was installed and then a path above the drain was reinstated. The site was fully barriered off to safeguard residents, staff and visitors during the work. With the new sewer pipe installed, a CCTV drainage survey was carried out

to show the care home owners that the pipe was in good working order, with the correct optimum fall to the main sewer, and no sagging.

The excavation and pipe replacement was completed in five days, while on site, the Lanes drainage team repaired two manhole channels on the other side of the building to prevent snagging of toilet waste.

Mark Morrice said: "This project demonstrates the capacity and capabilities we have to quickly assess a potentially high risk drainage problem and rapidly put in place the appropriate solution.

"Thanks to our no dig expertise, we can often repair drains through installing patch lining or full liners, or cutting blockage material, such as tree roots, from drains.

"However, when conventional drain excavation is needed we can act quickly, safely and decisively and minimise the risk to clients like care homes and their residents."

[For more information, see below.](#)

www.lanesfordrains.co.uk



Handling & Storage



YOUR MATERIAL HANDLING PARTNER

We pride ourselves in supplying a prompt, reliable & helpful service.



Contact Davison Forklift Ltd today. We are authorised dealers for Clark and AUSA and offer; servicing, reconditioning & repairs for all forklift manufacturers.

T 01952 915 060 | sales@davison-forklift.co.uk

www.davison-forklift.co.uk

Davison Forklift Ltd, Yew Tree Farm, Crackley Bank, Shifnal, Shropshire, TF11 8QT