

Building & Construction Review



Managing contractors and manual handling training now available as online learning courses

Astutis, the Gold Standard Health and Safety Training company, are delighted to launch the Astutis Approved Managing Contractors Online Course as well as the Manual Handling Online Course.



The Online format maximizes learner control enabling the ability to study where and when they please. The Online format minimizes operational disruptions and offers a carbon-friendly alternative to traditional learning.

Speaking on the announcement, **Steve Terry, Managing Director, Astutis** said:

"It's fantastic to make the Managing Contractor and Manual Handling course even more accessible by integrating the flexible, learner-centric, Online format. The course couldn't be more prevalent as businesses look to prosper against rising costs and stricter regulations as we head towards the new year."

Astutis Approved Managing Contractors course?

The course is a one-day practical toolkit

that implements best practices when working with contractors according to the latest regulations. It instructs upon philosophies cited in HSG 159 and INDG 368, giving organizations peace of mind that their workforce is safe.

What is the Astutis Approved Manual Handling Course?

This course offers best-practice guidance on all manual operations in the workplace. It provides a comprehensive understanding of safe handling techniques and risk assessments that play pivotal roles in the workplace.

The course is available to upskill workforces in fundamental health and safety practices that ensure compliance and maximize worker safety for higher production yields.

The course is available in two different in-company options and now in the Online format. The diverse learning formats help to enhance flexibility and control for each learner, ensuring their training goes smoothly and to their liking.

The course takes approximately one to five days, depending on how the course can benefit your business.

Find out more about how this course can benefit your business: <https://www.astutis.com/workplace-training/workplace-courses>

Tool hire specialist for air and hydraulic tools



APP Site Services are a leading distributor of site supplies and services to the construction industry. One of our main focuses of the business is our hire and sales department for construction tools.

Here at APP Site Services, we provide an excellent service, not only with the range of products but with the level of care each order is given and the speed with which we can deliver.

We have a range of tools and

associated products available to hire. We specialise in Rebar Cutters, Rebar Benders, Hydraulic Splitters, and Pneumatic Picks.

APP Site Services is part of the APP Group, most tools can be shipped next day and be hired for various lengths of time. Call or visit our website today.

For more information, see below:

T 01909 519 519
www.appsiteservices.co.uk

Service Sealing Solutions Ltd visit DOYMA

Service Sealing Solutions Ltd is the sole UK distributor for the sealing industry's top manufacturers; DOYMA and HKD. Service Sealing Solutions Ltd supply the full range of DOYMA and HKD products, to suit all situations from sealing power cables, communications cables, pipes and ducts and district heating pipes, permanently preventing an infiltration of gases and water into the building. DOYMA's products are designed to solve all watertight sealing requirements and prevent against structural damage. DOYMA products are also guaranteed watertight for 25 years.

HKD which is now owned by DOYMA, manufactures a vast range of pipe sealing systems and service ducts with a guarantee that its products can withstand up to four bars of pressure. All of the HKD product range can be combined with the DOYMA's Curaflex range, one of the most popular DOYMA ranges.

Service Sealing Solutions Ltd specialises in high-quality service duct sealing systems for utility services and watertight seals, offering the highest level of expertise to developers and

specifiers for sealing against water and gas entering around service entries in basements and high-rise buildings.

T 01952 510050

tina@servicesealingsolutions.co.uk
www.servicesealingsolutions.co.uk



Husband and wife team, Jim & Tina have recently visited DOYMA in Germany to find out about the innovative products that DOYMA have been developing.



Traditional Joiners using modern machinery & techniques. Makers of Hardwood and Accoya™ Windows, Doors and Staircases

Established in 1968, Croxford's remain a family owned business committed to the finest quality craftsmanship which includes hand made hardwood doors, timber windows, staircases and bi-fold/patio doors. You will find our work all over the UK.

We supply for both commercial and private projects from the most modest new build/renovations to the most elegant of stately homes. Our timber doors and

windows not only look good and wear well, but with the option of traditional or modern hardware and highly efficient double glazed units they also help you save energy. Please call or visit our website for more information.

CROXFORD'S
Joinery Manufacturers & Woodturners



Tel: 01484 850892 Web: www.croxfords.co.uk Email: info@croxfords.co.uk
Croxfords, Meltham Joinery Works, New Street, Meltham, Holmfirth HD9 5NT



Elevate
Turn to page

03



Fennell, Green & Bates
Turn to page

04



Adveco
Turn to page

05



Barnshaws
Turn to page

06



Vandecasteele Houtimport
Turn to page

13



Bluerun Ltd
Turn to page

24

Service Sealing Solutions Ltd enters its fifth year of rapid success



Building and Construction Review is delighted to announce Service Sealing Solutions Ltd as the winners of our 2023 New Year Spotlight Award.

Service Sealing Solutions Ltd is the sole UK distributor for the sealing industry's top manufacturers; DOYMA and HKD. It was when DOYMA granted Tina McAra, company director, the exclusive rights to distribute their products in the UK in August 2018, that led to the formation of Service Sealing Solutions Ltd.

With seven years of experience as a Technical Sales Engineer for the previous UK DOYMA distributor in her skill set, Tina grabbed the opportunity to contact DOYMA in Germany to ask whether she could take on the distribution in the UK. DOYMA were pleased to hear this as no-one else in the UK had the knowledge about their products that Tina had, therefore, DOYMA granted Service Sealing Solutions Ltd exclusivity in the UK.

Service Sealing Solutions Ltd specialises in providing the best in German engineering to seal penetration points in walls and floors to permanently prevent any infiltration of gases and water into the building. The products are designed to solve all watertight duct sealing requirements and prevent against structural damage.

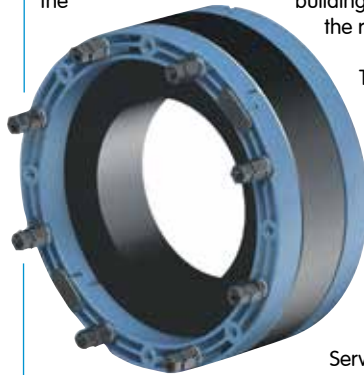
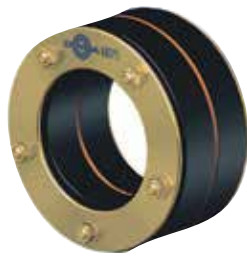
Tina commented, "We provide DOYMA's products mostly to builders of commercial properties and we have provided for many of the large projects in London including HS2 and Kings Cross. Quite often services and electrics are installed underground and therefore have to have guaranteed water tightness."

Based out of Shropshire, Service Sealing Solutions Ltd has a UK wide customer base and works hard to distribute a high number of

different products especially for DOYMA. Marked not just a distributor, the company also covers every aspect of a project, required by the contractor. Tina continued, "When you are planning a build, it is easy to forget the little details that make sure your building stands the test of time. Correct sealing can help keep the building's utilities accessible, making any maintenance easier to complete with little disruption. Service sealing systems also prevent structural damage because wherever service ducts are installed through walls, ceilings or doors, penetrating water may cause damage to buildings."

Demanding building types, such as power plants, large industrial plants, reservoirs or airports, often require highly specialised custom-made constructions. They place high demands on the fact that building penetrations such as cables and pipe work, need to be permanently sealed. Through working with DOYMA, Service Sealing Solutions Ltd is able to provide bespoke sealing answers to many different problems.

DOYMA has the expertise and experience of over 50 years to develop and produce the best solution for your building or project. State-of-the-art design and manufacturing methods as well as professional simulation methods will help to ensure safety when using special constructions, and all with an unrivalled 25-year warranty. Being the sole UK distributor for these products, Service Sealing Solutions Ltd is perfectly placed to guide contractors, developers or anyone involved in the building and construction industry through the relevant resources.



The majority of the products distributed by the company are gaskets, which seal holes in basements and cellars. These mechanical fixing products are a far superior version of expanding foam and are used by the commercial market in homes and buildings to guarantee excellence.

Service Sealing Solutions Ltd also distribute puddle flanges produced by FRANK, and these provide assured watertight sealing of pipes through concrete walls, foundation plates and manholes. The FRANK puddle flange is an extremely flexible product available in a range of versions, and can be installed during construction and is the cost-effective alternative to conventional sealing systems.

In terms of new developments, DOYMA has recently released its



new generation Curaflex Nova® gaskets - professional solutions for tradesman with uniquely safe installation. Providing tradesmen with professional gasket inserts, the new generation of Curaflex Nova® gasket inserts instantly solves sealing problems and is adaptable for multiple applications.

With other distributors providing similar products, what makes Service Sealing Solutions Ltd stand out? Because it only uses the very best in German engineering, the company's expertise, experience and willingness to go the extra mile for every customer means it really doesn't have to work all that hard to remain competitive. The aforementioned 25-year guarantee is a very important aspect of all its services, and cannot be matched by competitors. Combine that with its years of experience in the industry which allows them to consistently deliver on every level to the customers exact requirements means they are a distributor you can thoroughly trust.

Over the last 18 months the Global District Heating Market has rapidly increased compared to previous years and now meets nearly 8% of the global final heating need in buildings and industry. Witnessing this growth, Service Sealing Solutions Ltd is keen to explore this market. "For 2023 we will mostly be continuing on our recent success as well as looking at new markets such as the district heating market, which is a big and growing area for us," stated Tina.



For more information, see below:

T 01952 510050
sales@service sealingsolutions.co.uk
www.service sealingsolutions.co.uk

Elevate: seamless construction project management

Building & Construction Review would like the construction industry to take note of 'Elevate,' our New Year Spotlight company.

Project management in the construction industry often requires a triangular pulling of heads between the chief architect, contractor, and sub-contractor, not to mention health & safety and contractual law, fire safety post-Hackitt review, urban planning law and a drive towards carbon neutral footprints. It's no wonder that project managers can feel that all processes, no matter how small or large can be delayed.



"The only system that interlinks all the different sectors of the industry."

Steve wanted his design to be available to everyone from a singular user novice, through to the professional and all the way to a multi-faceted management team,

"I wanted my design to be accessible, without the need for a degree in computer programming. We all have different learning styles and many of us are visual learners, which I incorporated into the design with a traffic light system."

The colour coded design warns of approaching deadlines through the whole management process from design, construction, finance, and legal aspects allowing for full compliance and a full audit trail to be accessed in real-time. Users can input buffers around deadlines to allow for snags and unexpected complications for increased flexibility but the overall aim of Elevate Assist is to push work forward at a scheduled pace. With unlimited viewing access due to its cloud-based servers, any member of the team can



Steve McGowan has spent over 34 years working in construction: from the early days as an apprentice joiner, to climbing the ranks as sub-contractor, contractor manager and finally as a consultant. One of the pitfalls he noticed was when the information flow didn't happen at the right time, with the right people,

"Professionals are asked for RFI's daily and with higher management working remotely and looking after multiple projects, they need updates quickly and in real time. Elevate can provide that real-time update, directing everyone on what needs actioning. This in turn allows the team to prioritise their time and become more productive.

I have spent the last 13 years self-funding my automated proactive management system, designed to assist everyone to help manage workloads, increase productivity, and reduce stress. The software makes sure everyone is working effectively in the same direction. Elevate is user-friendly, instead of using multiple software that do one little section of the overall process, Elevate Assist, is a standalone software solution connecting everyone under one digital hub."

This ingenious software design was first market tested in 2007 and was shortlisted for Best Newcomer to Show at The Interbuild Trade show at the NEC to impressed industry professionals. The Editor of Build & Engineers Magazine spoke highly of the programme,

Elevate Assist can skilfully plan the whole timeline from blueprint to brick with smart technology guiding the whole process seamlessly. Steve however sees the intelligent system working in many industries outside construction,

"There's nothing to stop a banking or legal setting from using the smart programming. The banking sector needs to mitigate against loan defaulting and fraud. Elevate Assist would allow bankers to input data from the offset and this solutions software would offer certitude of drawdown."



This software solution is exclusively new to market but in the last eight months has already made waves across various sectors. The CEO of Vantage Homes, R Rowntree was blown away by the product,

"It is certainly the most complete system I have ever seen."

This complete management system will work across the whole spectrum of construction projects from multi-million new build projects, to bespoke listed building refurbishments to large-scale tower block demolitions. It requires minimal training allowing companies to just get on with the tasks at hand and as a standalone programme it doesn't need complicated computer migration to other systems.

Looking ahead to the next business quarter Steve is ready to take the construction and in fact, any business sector by storm with this innovative, cost-saving project management system. If you're looking to elevate your business to the next level, then this is the perfect solution.

For more information, contact Steve McGowan on the details below.

T 01962 761693
M 07824 724377
steve@elevate-software.co.uk
www.elevate-software.com



monitor progress in real-time from anywhere, knowing at a glance what has to be done to keep everything on track to prevent any possible delays in the future,

"Elevate Assist simply put, alleviates stress, and increases productivity. End-users receive advance notifications of approaching deadlines, smoothly guiding everyone in the same direction. The quality control software saves time, allowing everyone to just get on with their jobs. The visual dashboard can be displayed on many formats instantly and allows for remote team meetings to have real-time data to quickly assess the state-of play and make quick decisions, keeping the whole team fully focussed on the objectives."



West Yorkshire company go digital with surveying and consultancy

For our 2023 New Year Spotlight Building and Construction Review Award we would like to focus on Fennell Green and Bates for its expertise in urban planning surveying, mining engineering services and environmental sustainability.



Fennell Green & Bates is a surveyor and consultancy company in Wakefield, West Yorkshire offering expert advice throughout the UK on building surveying, mining engineering services and environmental applications. Manager John Carlon tells Building & Construction Review more;

“Our main role is to advise clients on house building, regeneration of brownfield land, building supply from quarries, stabilisation of land affected by mining, legal ownership of land and mineral rights and the regulatory processes affecting their businesses and how these issues can affect their projects and bottom lines.”

Established in 1879 in Wakefield the company originally advised coal and mine owners on the rapid expansion of the Victorian railway system across England and Scotland during the industrial revolution. The company still has archives that date back to more than 140 years of records of mining and industrial uses of land in the West Yorkshire and the rest of the North of England. Since 1947 there have been legal frameworks on how to reclaim derelict and brownfield land from successive Governments and the practice has guided clients on reclaiming land over the past 75 years.

Minerals can be defined as oil, coal and precious metal ores which are held by the State, metal ores such as iron, tin and copper owned by mineral owners, and gravel, limestone, shale and clay that can be owned by the mineral owner or the land owner.

In most of England and Wales it is often difficult to tell what minerals are underground and whose minerals they are and the rights to work them. Mineral rights can

be severed from the surface ownership and were not registered until quite recently when mineral ownership was registered with the Land Registry from 2012.

The mineral vendor could reserve the right to ownership despite a separate owner having the surface land title. Fennell Green & Bates is an expert in this area and offers legal expertise on all construction on land so that there is no trespass into mineral bearing land. There are often less restrictions on agricultural farming or road construction as there is minimal soil and excavation into mineral bearing land, however if a customer wanted to source water through deep bore hole drilling or wanted to install a wind turbine then advice should be sought. John explained how Fennell Green & Bates is focussing on mineral rights

“Specific services are mineral rights and how these may affect the development of land since the requirement to register mineral rights from 2012. The interpretation of the ground and what is mineral is crucial and a report on the risk of trespass when excavating sewers, foundations and tanks should be assessed. Mining risk assessments and stabilisation of land through good design can save money as more land that has been previously used or affected by industry and mining is used for housing and commercial development.”

In urban planning brownfield land refers to any previously developed land that is no longer required or in use and at risk of potential contamination with hydrocarbons, asbestos or other materials. An area in which Fennell Green & Bates is planning on focussing further in 2023 is contaminated land advice. In built-up areas for example an industrial site might be closed down and rehoused in a larger facility



in need of thorough professional environmental appraisal.

Advisors at Fennell Green & Bates would assess the site, consider ownership rights, advise on remediation costs design a site investigation strategy and finally

allowing for a quicker, more efficient service to its customer base. Looking ahead to 2023 the company wants to focus more on rural and farm diversity as farmers and other land owners are discovering that there are minerals beneath the agricultural or land as John highlights

“Some landowners have wealth beneath their feet as well as in the land they cultivate.”

Fennell Green and Bates is a specialist in all things surveying, mining and the environment, and is able to coordinate large scale project management across a wide range of engineering and land development portfolios. With rich, historical archives at its digital fingertips the company is expertly placed to help a diverse range of clients from single self-builds, major quarry restoration schemes, or large remediation earthwork projects to communication with legal representatives, local planning officers and Government departments.



elsewhere away from other receptors. The land may be redeveloped for housing or commercial use which is a sensitive receptor. The land can contain asbestos, hydrocarbons, high levels of sulphates and metals in the ground from the previous uses over the past 150 years leaving commercial or housing developers

advise on which future date a property developer could buy the land and begin building new housing or commercial development.

Pertaining to Yorkshire, Lancashire, Derbyshire and the Midlands this surveyor consultancy firm has a competitive edge with detailed historical knowledge of land usage as John specifies

“Our services are backed up by comprehensive records of projects from the last 75 years and first-hand experience of mining and the effect that it can cause at the surface over periods lasting a few months to over 30 years.” A lot of our work is in former mining areas, particularly the exposed coalfield regions of the UK. With expertise across a broad range of construction services, the company has a solid holistic understanding of land and mineral legal rights essential for the building industry. Expert advice can be given on many areas including residential building surveys, boundary and topographical surveys, land title searches, coal mining reports, quarry survey audits, waste licensing, land and mineral applications for development, and contamination assessments. This advice and knowledge are indispensable to the planning and building sector, for safe extraction of minerals, metals, construction materials and associated accurate assessments on flood risk and water management associated with climate change.

To ensure a smoother process, throughout 2022 Fennell Green & Bates moved its extensive archive, documentation and filing system to digital storage



For further information, see the details below.

T 01924255666
M 07483164372
fennellgreenandbates@gmail.com

The Old Joiner's Shop
59 Oakenshaw Lane
Walton
WAKEFIELD
WF2 6NJ



Building & Construction Review's heating & ventilation company of the year – Advenco



Greg Brushett, UK Sales Manager, Advenco

HQ has become the focus for technical and logistics with an increase in facilities for both teams. We are currently updating our in-house training facilities to support a new range of sustainable water heating CPD courses under the guidance of a newly created training role.

With a predicted one-third rise in non-domestic floor space by 2050, much of the current focus resides on new builds, but this still leaves more than 1.6 million pre-existing non-domestic buildings in England and Wales, generating almost one-fifth of the UK's carbon emissions, needing expert, practical support.

ASHPs have become the poster child technology for the government's net zero strategy. When deployed in a hybrid approach, ASHP such as Advenco's FPI32 or L70, are used to preheat commercial DHW. This is combined with either gas-fired or more preferably an electric top-up to achieve the required 60°C temperature for safe commercial operation. The additional system complexity is where cost can creep in. But by correctly balancing a system through a mix of physical spacing in the vessel and system monitoring with dedicated controls, as developed for the Advenco FUSION, the system no longer fights itself, working seamlessly to deliver the highest operational efficiencies.

Topping up system heat with an electric boiler, such as Advenco's ARDENT, which is similarly priced to an immersion heater, is also advantageous. The system cylinder is significantly less likely to develop damaging limescale in hard water areas. An additional level of redundancy is also gained that is not achieved with a single immersion heater.

Looking forward we continue to develop our existing product lines and innovate new applications to garner the best possible efficiency for lower emissions and operational costs. We recognise that some projects will have the budget to go 'full BREMM' carbon-free, but many more commercial organisations will have to deal with existing, ageing building stock and rely on older gas connections.

Our approach will therefore be one of offering gas, hybrid and completely carbon-free products. We see this more balanced approach as the most practical for many customers, and it is one that the wider industry is coming to realise as organisations grapple with the realities of attaining net zero systems. For

2022 has been demanding as the UK moved on from the pandemic, which delayed many building projects, into a period characterised by the challenging issue of sourcing raw materials and supplies. Advenco planned for tougher market conditions, and we know some in the sector have seen drops in sales of as much as 45% on certain lines. However, by putting new procedures in place, recruiting additional specialists, adapting the way staff work with more remote and flexible working and refining product lines we have been able to exceed the forecast sales targets for the year.

At the beginning of the year, we opted to refocus on what we do best, being a specialist provider of application design, product supply and servicing of larger-scale domestic hot water (DHW) systems for commercial properties. By concentrating on our core heritage, we have been better positioned to re-evaluate our product lines and seek new supplier partnerships and drive market critical innovation. As well as positioning us to meet the increasing demand for renewables, particularly air source heat pumps (ASHP) and solar panels, we have also been able to extend our existing ranges of water heaters, hot



for businesses to attain net zero through the later 2030s and 2040s. Our programme of development will address increasing blends in the near term before moving our attention to units capable of operating on a 100% hydrogen feed. With the work required to upgrade the national gas grid, this is a long-term project, but one commercial organisations are more likely to see as advantageous.

Smart metering is also a crucial development, and we will be extending our services to enable businesses to gain real-world insight into current system operations. This is necessary for correctly assessing and sizing for integration of renewables so that capital costs are controlled.

In the short-term our focus on renewables will continue with further developments in lowering the global warming potential (GWP) of our heat pump ranges through the application of R290 refrigerants.



These also increase the working flow temperatures to meet the demands of commercial DHW projects, reducing wider system complexity and cutting costs as well as carbon emissions. We also will continue to support the development of solar thermal systems with our latest drainback capabilities to make more effective use of often limited roof space while reducing the operational costs of preferred all-electric systems being introduced as part of carbon reduction strategies.

Advenco also champions the advantages of offsite construction, providing ready-to-install bespoke hot water applications in a plant room 'pod'. This approach can dramatically reduce project build times whilst making better use of overlooked or wasted space around or upon a building. Our work on creating bespoke and pre-sized variants that incorporate ASHP into all-electric applications continues at pace, with further developments undergoing field testing.

Being named Building & Construction Review's Heating & Ventilation Company of the Year demonstrates the advantages of Advenco's proudly independent approach to innovation. With more than 50 years of heritage in the design, supply, and servicing of robust, efficient, and cost-effective business-critical hot water systems we are pleased to have our company recognised for our work in responding to the ever more urgent need for low carbon, cost-effective applications that help achieve net-zero operations. It's a real accolade for our entire team who work tirelessly in close partnership with our customers to create and deliver these better, more sustainable, and future-proof resolutions for modern commercial operations.

www.advenco.co



water cylinders and pumps while adding new lines including electric boilers, all while retaining good stock availability for customers. The addition of our pre-sized hybrid ASHP FUSION system to the portfolio has been a particular success story, helping to redevelop and extend our existing national accounts.

As part of this process of business refinement Advenco recently opened a new sales hub in Milton Keynes, extending the internal sales team and providing a more centralised point of business for the regional sales teams. By relocating sales, our Farnborough

many, this means retaining gas-fired water heating and introducing in the short term a 30-40% mix of renewables.

To support this, we will continue to expand our lines of gas-fired condensing water heaters, such as the AD and ADplus, improving efficiencies and making the best of smart, connected services to enhance operations and reduce maintenance costs. While we can already demonstrate 20% hydrogen blend-ready gas water heaters, we have high expectations for hydrogen as a cost-effective and more familiar means



Your metal bending specialist



Barnshaws' history dates back to 1969 when the company enjoyed an early rapid success in fulfilling a big demand for general engineering products such as duct rings and flanges for ventilation, air conditioning and dust control. Once located in a small rented factory in Oldbury, just north of Birmingham, of which it has inevitably outgrown, Barnshaws has now evolved into a multi-location company with five manufacturing sites in the UK across the Midlands, Manchester, and Hamilton, and one in Poland.

"Over the years, market demand has changed and we now offer a full bending capacity in a wide range of sections and materials to fulfil

imagination and innovation.

Whether you're looking for a high-volume standardised product to meet demanding timescale and logistical schedules or a one-off bespoke component, Barnshaws' 'customer first' approach combines both successful long-term relationships with an unrivalled level of trust that only yields exceptional results.

Greg mentioned a specific service available that is designed to combat current industry demands. "Even though we are the world's most capable metal bending company, our ambition remains undiminished, as we aim to meet ever more challenging project demands, irrespective of scale, anywhere in the world. With the advancement of new material grades in higher strength steel, Barnshaws have the capability to bend these sections. We are always engaged in a constant self-evaluation process to ensure that our administrative, manufacturing, technical and logistical capabilities remain at the cutting edge."

As a company that is constantly re-investing in new technology to ensure it offers a complete bending service, Barnshaws have the



stage as it was built to coincide with the 2022 Commonwealth Games. The metal bending experts at Barnshaws Section Benders were asked by Billingham Structures Ltd to deliver a high-quantity of precision curved SHS sections for a structure roof made out of nearly 400 tonnes of square hollow section (SHS). Utilising its extensive selection of specialist bending machines operated by metal bending experts, this was easily achieved. "Our internal research and development team was able to originate an innovative design that minimised the additional length across all the SHS. This reduced wastage and provided more value," said Greg.

As the go-to company for large, complex structural bending, also in July 2022, Barnshaws completed was to support one of the UK's most innovative and sustainable buildings in New Bailey, Salford. Barnshaws produced multiple curved sections and porthole beams for Evadx Limited that had been precisely bent to match the contemporary décor of the building's façade accurately and within schedule. Greg added, "Incorporating more nature into the urban design is critical to cities' sustainable futures. We are extremely proud that Barnshaws is taking part in this kind



of development and we are looking forward to do more projects like New Bailey."

During the COVID-19 pandemic, Barnshaws continued metal bending service for essential sectors "We remained in line with UK government guidance. Since, we have changed our practices to ensure we can



continue to provide metal bending services in key sectors. This included precision-curved structural steel that helped, and still helps, to build important facilities such as hospitals and architectural infrastructure and metalwork that are vital to a building's construction like curved facades, roof members, circular frames, multi radius section bends, beam cambering, helical and spiral staircase stringers, handrails and treads," said Greg.



Through its own evolution and innovation, Barnshaws will always remain the construction industry's number one choice for Metal Bending. Its ability to roll beams and columns about their major axis has enabled structural steelwork engineers to design structures curved in plan and elevation for years.

As members of a plethora of professional bodies including British Constructional Steelwork Association, RQSC, SCI, CAB, BSSA, and JOSCAR registered, customers can be assured they are receiving the best service in the industry. In closing, Greg added, "we have a very skilled and experienced sales team that are keen and willing to discuss any project that requires bending. This can be done via email, telephone or face to face visit. Please do not hesitate to get in touch."

T 0121 557 8261
www.barnshaws.com



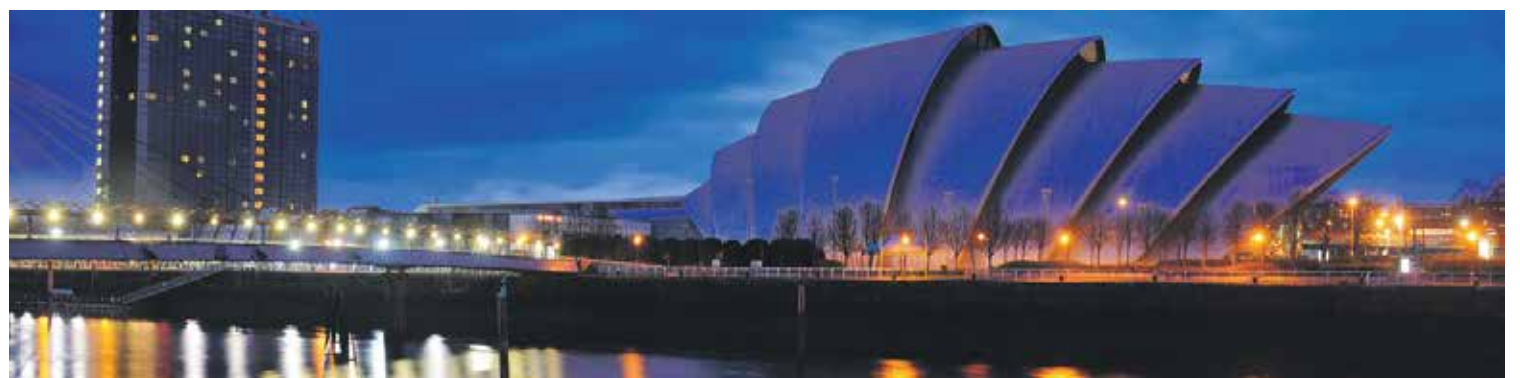
our customers' requirements. Barnshaws Metal Bending has the largest capacity range in the world and over the years we have grown to be a key supplier to the construction, architecture and engineering sectors," stated Greg North, Commercial Director. Furthermore, Barnshaws was also the first European bending company to achieve CE/UKCA marking combined with continual investment in state-of-the-art machinery which has kept its name at the forefront of bending technology.

No matter how big or small your project may be, Barnshaws Metal Bending will be able to offer you a solution. With all the capabilities to suit your needs, Barnshaws have the technology to not only curve tighter and more intricate sections than many of its competitors but because of its extensive years of R&D, the expertise within its architectural and engineering departments enable the company to design buildings that transcend flair,



capabilities to inject its innovation and creativity into the vastest range of projects, particularly for the construction industry.

In July 2022, Barnshaws was called upon to contribute towards the build of the new Sandwell Aquatics Centre in Smethwick. It was a vast project that was seen on a world



Dispelling common decking and cladding misconceptions

As a technical advisory service, the TDCA receives enquiries daily. But too often we get asked the same questions that are fundamental to both timber decking and cladding. We're working hard to address them and provide resolution to common misconceptions by providing free resources on our website as well as on-hand guidance.

As well as our popular Timber Decking and Cladding Handbooks, the Frequently Asked Questions (FAQ) section of our website has a host of solutions to common issues – and if you can't find the answers there then you can get in touch. Whenever we receive and deal with a new enquiry, if the subject is not already covered on our site, we create a new FAQ.

If you're after a particular fixing, coating or timber

component look no further than our Supplier database of DeckMark and CladMark approved products and suppliers. Similarly, we have a growing number of approved installers too. In addition to our bespoke sourcing service, we offer inspection and expert witness services if things have gone wrong with your decking or cladding project.

The Timber Decking and Cladding Association is a not-for-profit company and the money generated from membership fees and inspection services goes towards its work to raise awareness of fit-for-purpose materials and installation good practice.

For more information visit:

www.tdca.org.uk



Your roof is not the only place for solar



Is your home future proof? Are you concerned about massively increased energy prices? Are you worried about your home's carbon emissions?

You could install a Heliomotion ground mounted solar tracking system yourself in less than a couple of days. This is Heliomotion - Build It Magazine's best sustainable product or technology award winner, designed and manufactured in Finland and the UK, made from top grade steel and aluminium.

Unlike roof based solar pv installation, solar tracking systems follow the sun from sunrise to sunset every day. Because of this they generate around 45% more electricity than a static ground mounted or roof mounted Solar PV installation.

They are ground mounted using either a custom steel plate and ground anchors, or a concrete plinth. Ground anchors are more eco friendly and can be installed in less than an hour.

There are four different sizes, use singly or in multiples, either on or off grid. Pop one in a sunny corner of your garden and watch your bills go down. (You will need an electrician to wire it in and commission it.)

Benefits:

- ▲ Complete solar energy solution
- ▲ Straightforward installation
- ▲ Take it with you if you move
- ▲ Produce your own electricity
- ▲ Premium quality

Talk to Bee Solar Tech about installing multiple systems, solar panels, inverters, solar immersion diverters and battery storage requirements.

www.beesolartech.co.uk

Need the best Decking or Cladding? Look for the Mark




**DeckMark and CladMark
verified products and installers**

Industry recognised, third-party accreditations which require a full business assessment and annual surveillance audits by the TDCA.

From wood coating manufacturers, specialised fixings to timber products and design engineers.

Get in touch and find an accredited supplier today

info@tdca.org.uk | 01977 558147



The Timber Decking and Cladding Association is a not-for-profit, independent technical and advisory trade body. Recognised as the authoritative source of expert opinion in the UK.

www.tdca.org.uk

4 different sizes available





beesolartech.co.uk



- 👉 Complete solar energy solution shipped sustainably
- 👉 Straightforward installation with illustrated assembly guide
- 👉 Produce your own electricity and reduce your power bill
- 👉 30-50% more energy generated compared to static panels
- 👉 Premium quality and elegant design

Contact us

033 3303 4366

www.beesolartech.co.uk

sales@beesolartech.co.uk

Premium exterior finishing

Quality timber cladding offers architects and builders a sustainable, aesthetic and insulating exterior finish.

Timber is naturally insulating and when installed it enhances the thermal efficiency of a building, however, this isn't the only benefit of this building material.

Our market-leading Shou Sugi Ban® premium charred cladding is responsibly sourced, professionally prepared and safe to use on domestic and commercial builds.

Skilled in the traditional Japanese wood preservation

technique, our team apply controlled burning to alter the cell structure and increase the resilience and durability of our timber cladding.

Handcrafted in our workshop, Shou Sugi Ban® charred timber cladding offers:

- ▲ Weather, rot, fire & insect resistance
- ▲ Long-lasting preservation through a chemical-free process
- ▲ Minimal on-going maintenance
- ▲ A 100% recyclable building material

Working with Larch, Cedar and Oak, as well as

modified Accoya®, Kebony or Yukari timbers, we offer a range of tones and textures that add unique character to contemporary build and heritage restoration projects.

See the full range on our website: <https://exterior.supplies/charred-timber-cladding/>

Exterior Solutions Ltd is a specialist in the manufacture and supply of Shou Sugi Ban® charred timber cladding.

Please get in touch for further information, quotes and samples: **01494 71800**



Natural stone proves popular



Cotswold Hill Stone & Masonry Limited was first set up back in 2007 and celebrates its 16th anniversary this year. Cotswold Hill Stone & Masonry operates two separate quarrying sites, Cotswold Hill Quarry, near Ford, on the outskirts of Cheltenham and their Birch Hill Quarry, located at Parkend, near Coleford in the Forest of Dean.

From these quarries, they produce Cotswold limestone, Forest Pennant sandstone and also stock Bath, Iron and Lias stone. Cotswold Hill Stone and Masonry provide a tailor made and a comprehensive service, supplying building, landscaping stone, revetment, and aggregates as well as masonry stone.

The Pennant sandstone from the Birch Hill Quarry is an alluring blue and grey colour that is becoming increasingly popular among those seeking a more modern aesthetic. One of its most frequent uses is for landscaping sector with the cropped building and walling stone favoured by architects and planners. Sometimes the stone can have a green hue, or even a shock of red within it which provides a more dynamic and contrasting appearance.

With such a wide range of services and wealth of knowledge, it's easy to see why so many private and commercial clients across a multitude of industries seek out their stellar services.

If you would like to get into contact or view some of their wide range of stone, then be sure to give them a call. Additional information on both quarries and their services can be found by visiting their website, detailed below.

T 01386 584 384
www.stonequarries.co.uk



Walling
Rockery
Monolith Feature Stones
Building & Masonry stone
Sandstone & Limestone
Restoration

www.stonequarries.co.uk

01594 808716
01386 584384





IOTA
The Planter Specialist











From window boxes to tree planters, choose from wide range of stocked designs or custom-made to suit your space.

www.iotagarden.com

Eco Clipper FM4 Sport for sporting grounds

Eco Clipper offers large area mowers that help field managers minimise mowing costs while producing a professional cut. The Eco Clipper mowing system was originally developed to replace the cylinder mower in turfgrass production. The aim was to retain the cutting performance of a well-tuned cylinder mower, but not the high maintenance requirements and sensitivity to mowing conditions, such as wet grass and weeds.

The system

The smooth cutting decks with fast spinning small blades ensure a high quality of cut and a good distribution of clippings. Even in wet

grass, the clippings are well distributed. This makes it possible to schedule this mower almost independently of the weather.

Thanks to the electrically driven blades, the mower is very economical and quiet. The large wheels and smart mower deck linking system ensure good contour following and enable high mowing speeds.

Municipalities and sports field and park managers have also discovered the advantages of the Eco Clipper mowing system. For them, Eco Clipper offers the EC-FM4 Sport. This 4.11 m wide mower has four independent mowing decks. Its

position in front of the tractor provides excellent visibility and comfort for the tractor driver.

The Benefits

Users report high productivity gains, a factor two compared to 5-gang self-propelled cylinder mowers, and appreciate the low maintenance need and the ability to schedule the mowing even in less favourable mowing conditions, such as early morning dew and wet autumn.

For more information, contact:

info@vanmac.co.uk
www.ecoclipper.com



ECO CLIPPER

Get started saving today by mowing your sports fields with Eco Clipper

With highly efficient electric-powered mowers that can be used at high cutting speeds and in almost all weather conditions, the Eco Clipper FM4 Sport is a safe solution to significantly reduce mowing costs on sports fields.

Have you considered using marine containers as a short or long term storage solution?



Lendon containers is based in London and was founded 23 years ago by the company's namesake Lendon Meaby. Lendon Containers sell and rent marine shipping containers and has built a strong reputation for its containers and boasts an impressive portfolio of satisfied customers throughout a variety of different sectors including: The Army, Local Authorities, Leisure Facilities, Construction, Parks and Garden Centres, Hospitals, Static Storage Centres, Schools, and Utility Companies.

Shipping containers are an extremely cost-effective and flexible storage solution as they are easily transported, opposed to other storage facilities such as warehouse storage.

The company's containers are not solely hired or purchased for their storage capabilities and have been converted by many clients for a whole host of different applications and purposes, including generator units, laboratories, clubhouses, secure site offices, chemical stores, pop-up bars and food stalls.

In terms of the range, Lendon Containers provides containers for hire and for purchase. The containers are extremely competitively priced and can be rented from as little as £12.00 a week, plus VAT. Containers available for rent are either 10ft, 20ft or 40ft x 8ft x 8ft6 ins, a 20ft offers nearly 14 square meters or 32 cubic meters of space..

Maintaining an experienced team, Lendon Containers can help customers with the entire conversion process; from the design of the container right the way through to fitting it out and transporting it to the customer's location. Regardless how big or small the project is, the team at Lendon Containers is always on hand and will guide its customers through every step of the way. There are many examples of previous conversions available for customers, with sample materials and styles available.

A great solution for cost-effective, simple and transportable storage or a unique conversion facility – Lendon Containers provides a plethora of options for customers.

Contact
 T +44 (0)20 7350 1940
info@lendoncontainers.co.uk
www.lendoncontainers.co.uk

RMC Equipment

SHARP GRADE LEVELLER

<https://www.facebook.com/SharpGradeUK>
<https://www.facebook.com/RMCEquipment>
<https://www.instagram.com/rmcqeter>

All you have to do is choose your tool carrier and if you want to work in 2D or 3D

OPERATOR OF THE YEAR 2022

Meet us at Operator of the Year Finals day

RMC Equipment Sales, Hire, Servicing & Advice

Find out more at www.SharpGrade.uk

peter@rmcequipment.co.uk
 07973 175 244

Pretty Wild Seeds

Pretty Wild Seeds are a professional, family business, fully registered with DEFRA who specialise in both grass and wildflower seeds. We supply wildflowers & wildflower mixes and a wide range of both amenity and agricultural grass seed ready to suit your building & construction projects.

We do understand though, that not every project is the same so we're very happy to create bespoke mixtures for customer requirements, whether that means a slight adjustment of mixture constituents or a fully 100% bespoke mix for your specialist needs. When you get to the stage of your projects where you need to source certified grass and wildflower seed to finish the job off, Pretty Wild Seeds really are one of the largest and best companies in the UK for it.

And with an ever-growing reputation which has seen us supply seeds to some of the biggest companies in the country, you too can be confident in both our products, and our advice.

[For more information, see below.](#)

01325 353596
sales@prettywildseeds.co.uk
www.prettywildseeds.co.uk

Pretty Wild Seeds
 Valley Street North, Darlington, DL1 1PY



Lux Unique design and manufacture bespoke high quality steel garden products in the UK



The UK market was previously flooded with mass produced cheap products from overseas and the owners of Lux Unique were seeking something of high quality, built to last and most importantly made in the UK. The team behind Lux Unique are family and operate an onsite steel fabrication company so have a wealth of state-of-the-art machinery and expertise at their disposal. Over the last few years, the company has grown from selling standard log stores and planters online to supporting many garden designers and clients in creating bespoke pieces for their outside spaces which are beautifully designed and will stand the test of time.

The popularity of Cor-ten steel known for its exceptional strength, longevity and zero maintenance has seen this material become the product of choice for so many landscapers and garden designers. Lux Unique offer a minimum thickness of 3mm on all Cor-ten products because to offer a thinner material would simply compromise on the quality and strength of the product, something many of their competitors do. The company also offers products in powder coated steel and galvanised steel.

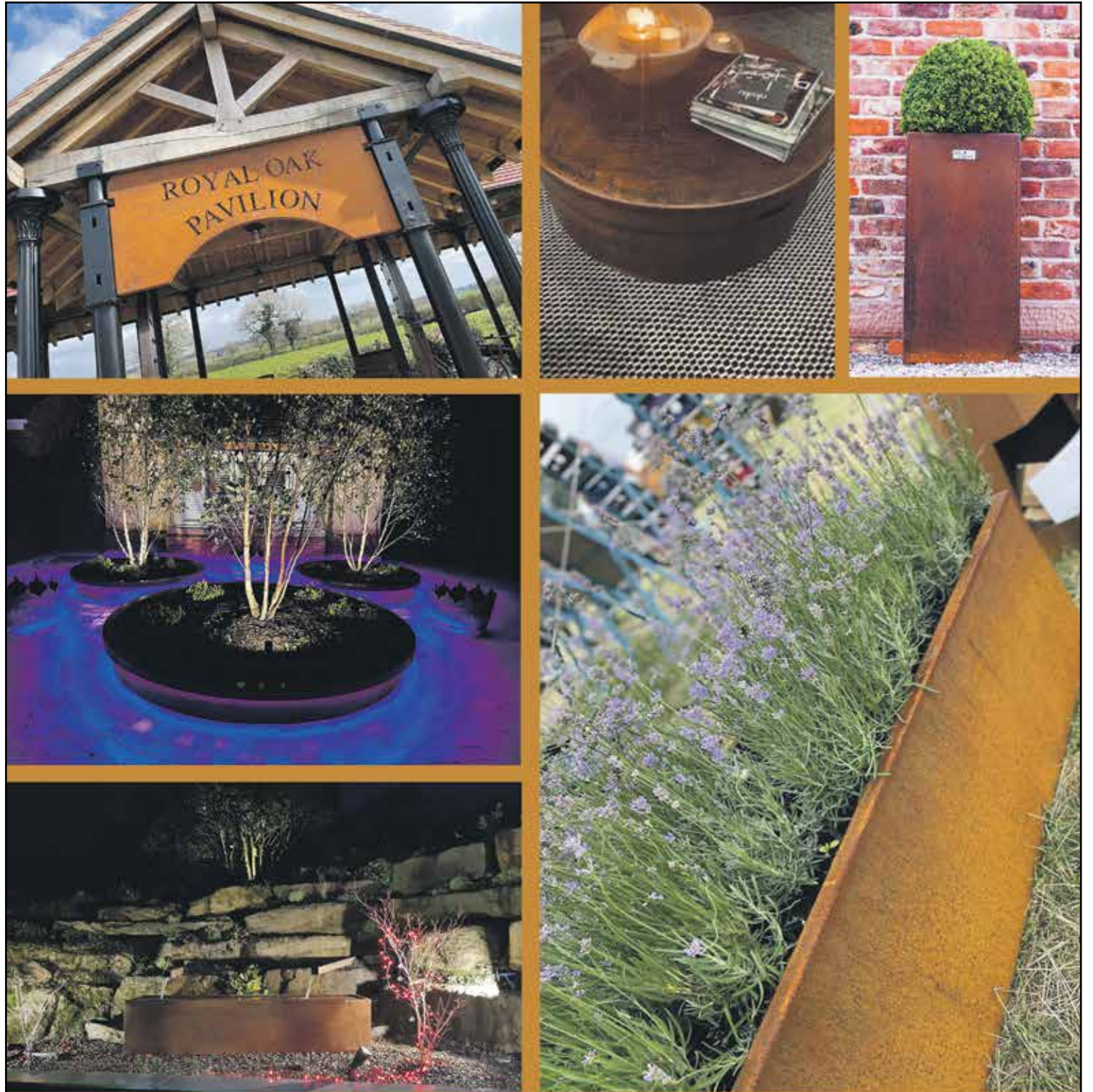
The in-house team of designers, technical engineers and steel fabricators mean that Lux Unique have total control over the design and manufacturing process from inception to completion and can work with clients to create truly bespoke, high quality crafted pieces.

Lux Unique have created many bespoke pieces for clients including planters, raised beds, water features, screening and firepits. They work with designers on the all the technical aspects of their ideas to come up with solutions to suit the space and budget.

Lux Unique products offer new and unique additions to enhance outdoor spaces. The company's engineers manufacture each stunning and stylish product to a superior high standard and this ensures durability, with zero maintenance. Its commitment to high standards has placed Lux Unique at the forefront of bespoke fabrication for the garden industry, bringing a superior quality UK made product to the market and offering a personal one-to-one service for all its clients that still delivers affordable quality for everyone.

[For more information, please see below:](#)

T 03333 66 11 30
hello@luxunique.co.uk
www.luxunique.co.uk



Exceptional Products | Exceptional Service | Bespoke Fabrication

LUX UNIQUE

Planters | Raised Beds | Water Troughs | Edging and Screening | Log Stores

www.luxunique.co.uk | hello@luxunique.co.uk | T: 033 33 66 11 30

Cool Kampus project cottons on to timber windows & doors at Minto & Turner Building

Part of the Kampus project to regenerate Manchester's Canal Street and surrounding areas, the Minto & Turner Building, a former cotton warehouse, is a well known local landmark situated on the Rochdale canal in the centre of the city.

A red brick grade II listed warehouse building, it is an award winning scheme converted under the watchful eye of ShedKM Architects into trendy apartments by Mount Anvil on behalf of Capital & Centric and HBD.

This Instagramers paradise has a real contemporary feel that manages to retain its past strong industrial heritage whilst making it suitable for today's modern lifestyle. Inside is exposed brickwork and cast iron columns with large open plan cloister living areas providing dual aspect views through the black/grey timber casement windows. Outside, cast iron fire staircases and hoists have been restored and retained.

The building also features matching smaller square pivot windows and simple timber doors providing residents with great views and access to the street scene and canalside bars below.

Having worked with George Barnsdale on its Nottingham Axis project, a conversion of the old co-operative building, Henry Boot Development was no stranger to the Lincolnshire joinery manufacturer, which is one of the oldest surviving family companies still manufacturing high performance timber fenestration in the UK.

A mix of timber flush casement windows, pivot windows and timber doorsets were designed to incorporate high acoustic and thermal performance to ensure the perfect living conditions inside the building. Part of the aesthetic on the canal side elevation includes the use of louvres for privacy and to maintain the industrial feel.

In addition to the manufacture of the bespoke timber windows, doors and louvres, George Barnsdale also provided ongoing site surveying and project management as well as full installation using detailed interface drawings to ensure the perfect fit, taking into account the wonky openings typical of a project like this.

For more information, see below:
www.georgebarnsdale.co.uk



The Kampus (Mount Anvil)

GEORGE BARNSDALE

Est. 1884



Building Products & Services

Not just any **installation**
It's an **ECO** friendly one

Working across a range of sectors,
we deliver projects between £10k and £4m.

For more information please contact us,
 ☎ info@eco-1.co.uk ☎ 01922 214007

The Trusted **Electrical Installation** company delivering:

- 🔧 Design & build projects
- ⚡ Full energy solutions
- 🔧 Maintenance & compliance services

For more information on project enquiries or career opportunities visit: www.eco-1.co.uk

Reliable and safe access equipment

Atlantic Access Ltd are scaffolding erectors and hirers based in Liverpool and the North West. Providing safe, access equipment for a multitude of different jobs including roofing, bricklaying and much more, for industrial, domestic and commercial projects.



Maintaining a committed, skilled and loyal team, Atlantic Access Ltd offers a highly professional service and utilises its experienced and expert team of long serving employees, of 10 years plus. This has positioned the company with the industry knowledge to assist with varying sized projects and Atlantic Access Ltd has built a strong reputation for its high quality service, personable approach and competitive prices.

The company offers its services for all residential work, new build properties, demolition work and commercial. Some of its recent commercial projects include: Vinci IHP on Preston Royal Hospital, the Boohoo main office in Manchester for Hightown Construction, Grahams Liverpool flyovers demolition, Parkinson Construction on Oldham Royal Hospital and Salford Hospital, John Turners on Whiston Hospital, ongoing Maintenance package for Daresbury Science Technology Park and ongoing works for the National Trust on Speke Hall and Chambre House in Liverpool.

If you would like to find out more, please contact the Director, Steve Long:

T 0151 549 1551
M 07917 193357
ste@atlanticnw.co.uk
info@atlanticnw.co.uk

New small duct heating and cooling system set to tackle rising temperatures in UK homes

A new small duct heating, cooling and ventilation system by US manufacturer Unico Systems has been launched in the UK.

The Unico System, which is installed in half a million homes and businesses throughout the US, provides heating, cooling and ventilation along with improved air quality and well-being.

The decision to make the Unico System more widely available to UK residents follows a series of record-breaking summers, as well as increasing demand for greater climate control.

The near silent, system, which operates at under 30 decibels, uses aspiration to deliver draft free heating and cooling ensuring temperature differentials are no greater than one degree throughout the home.

Richard Soper CBE, of Unico Systems UK, said, "The US is used to much larger variances in temperature, meaning that domestic ventilation and air conditioning is often installed as standard. As a result, the Unico system is fully adapted to the needs of domestic properties; providing effective climate control, but also operating at a barely audible sub-30 decibels. For self-builders and renovators this provides a unique opportunity to give

occupies the same level of climate control and comfort that they've come to expect in cars, hotels and gyms, no matter the season."

Contact
T 01384 422094
unico@bellplumbing.co.uk
www.unicosystem.co.uk



Air conditioning and heating solutions



Clima-Tech was founded in 2015 by Ashley Shemmings, a self-employed specialist in heating engineering with over 18 years' experience in the engineering industry. Clima-Tech is a family run business and alongside Ashley, wife Franki Shemmings works in the office. What started off as a maintenance and servicing company, soon evolved into a specialist multi-faceted service with a proven track record in the electrical, refrigeration, domestic, and commercial sectors.

Clima-Tech is well trusted and well established in the renewable energy field. Clima-Tech is hands on and works closely with its clients to ensure that the best service is delivered. Clima-Tech is an approved contractor by the following certified bodies: Microgeneration Certification Scheme (MCS), Renewable Energy Consumer Code (RECC), IWA, and REFCOM. Furthermore, Ashley has trained to the highest level, holding qualifications such as City and guilds 2360 NICEIC certified, City and guilds F-GAS, B-PEC G3 unvented, B-PEC Heat pump design, and B-PEC water regulation.

Clima-Tech has been the receiver of many awards over the years receiving first, second and third place in the following: 2019 National Energy Efficiency Awards, Energy Efficiency Champion and Commend Renewable Heat Installer & Contractor 2020/21 and the National Energy Efficiency Awards 2020/21. Another milestone for the company was in 2021 when Clima-Tech employed its first member of staff.

Clima-Tech specialise in a range of core services in the renewable energy field for MCS/RHI registration systems, Heat pumps, Heating systems, Electrical system design and installation, System commissioning, Air conditioning, Solar panel specification, design, installation, repair and maintenance, and Underfloor Heating and Plumbing works.

We now have a showroom open in Martlesham. We want to help more households experience the benefits that heat pumps can bring – and to encourage early adopters to make the move. Our showroom will share information about all the advantages of heat pumps, while busting myths about barriers to adoption. Our showroom has a working heat pump in place to demonstrate the technology in action, alongside everything that goes with them, including cylinders and controls.

Contact

T 01473 798321
ashley@clima-techservices.co.uk
www.clima-techservices.co.uk

Call head office on 01743 298001
or email our team of experts
at sales@easyflow.org.uk

Birmingham 01215 160138 Manchester 01612 416898 Liverpool 01513 176072 Wolves 01902 925609 Chester 01244 207300 Stafford 01785 907444

DOMESTIC COMMERCIAL
UK coverage - nationwide
installers of underfloor heating
and liquid floor screed for
commercial projects

Hassle-free Underfloor Heating Installation & Liquid Screed

EasyFlow are underfloor heating and liquid screed specialists, providing an innovative, quality heated floor solution.

Visit us at www.easyflow.org.uk



RE:
THINK
WOOD



Nature's
first choice



View and
order stock
on MY VDC



Prompt
delivery



2025 – our aim is to
trade in Certified
timber only from
2025 onwards



VANDECASTEELE
H O U T I M P O R T

Contact
Bergstraat 25
8511 Aalbeke
Belgium
vandecasteele.be

genevieve@vandecasteele.be
+32 56 43 33 00
dave@vandecasteele.be
+44 15 94 83 43 32

Base Structures install temporary weather screening to adapt to fast-moving building project



Base Structures have recently completed the installation of a series of removable and adaptable temporary fabric screens to aid site access at a prominent city center construction site.

To aid protection from rapidly deteriorating weather conditions, the client was looking for temporary screening to secure a 15-storey office building, guaranteeing their programme of work could continue uninterrupted and meet pre-arranged turnaround times.

To meet the requirements of the proposal, Base Structures installed forty-four screens across the length of the building with a total fabric area of 1,800m². Designed to withstand all relevant British Standard wind loadings and fire retardancy requirements, new attachment methods were devised with the client to circumvent existing columns not being appropriate. The results were cost effective, versatile, and offered much more flexibility when considering site conditions and access requirements.

The client, said: "The temporary weathering solution installed by Base Structures is a great design and fitted our needs perfectly. The installation team have maintained an extremely high standard of quality and safety and have delivered the install ahead of the anticipated programme."



Any Traynor, Head of Installation on the project and Director at Base Structures, added: "These temporary fabric screens help solve a problem for a client at a vital time in their building programme, enabling them to work uninterrupted in areas where building exterior is yet to be completed. Tensile fabric is perfect for this job, as they can be installed quickly with minimal disruption, allowing contractors to get on with the job and fulfil tight turnaround times. These screens are also very easy to dismantle, so when they're no longer needed, we will also remove them"

Base Structures are committed to the upcycling and re-use of tensile fabric that has not yet reached its end of life, and our zero-landfill policy means that screens like this can find another useful life elsewhere.

To speak to Base Structures about similar projects, or where expertise such as this can add value and time-efficiency to your building programme, get in touch on the details below:

T 0117 911 5250
sales@basestructures.com
www.basestructures.com



Humidity Control: Creating the ideal Environment

HUMIDITY SOLUTIONS
 Independently better

Humidity Solutions a leading independent specialist in humidity control, offering a range of humidifiers and dehumidifiers from the world's leading manufacturers. They have a highly experienced and knowledgeable team of sales and after-sales engineers who can design a bespoke solution for each unique application and supply, install and maintain the equipment throughout its life.

Established in 2008, in response to the markets need for a dedicated specialist in humidity control, Humidity Solutions vast became an independent leader in its field, providing innovative solutions for a wide range of industrial and commercial applications. Headquartered in Leatherhead, Surrey, Humidity Solutions has engineers based all over the country in the North, Midlands and the South, enabling a UK wide coverage for all maintenance, installation and service requests. The considerable technical knowledge, expertise

and experience within the team, allows Humidity Solutions to provide a full turnkey service, from design and installation, through to commissioning and ongoing maintenance.

Humidity Solutions have a range of humidification and dehumidification products from the world's leading brands including Neptronic in Canada, Vapac in the UK, Cotes in Denmark and HiDew in Italy. Correct humidity levels also have a direct impact on health and wellbeing and is crucial to many industrial and commercial processes such as medical research, data management, and packaging. Furthermore, it plays a vital role in the safe storage, display & protection of many consumer goods. Humidity Solutions is the leading independent specialist in humidity control.

Boasting an extensive product portfolio, Humidity Solutions has a strategy to minimise its environmental impact by

offering alternative low energy solutions to the more traditional, high energy usage equipment. Its vast range of products includes adiabatic humidifiers, steam humidifiers, desiccant dehumidifiers, refrigerant dehumidifiers, as well as other products such as reverse osmosis systems, and Vesuvius humidifiers. Ensuring each client has access to a personal service, Humidity Solutions can design a bespoke solution for each unique application such as industrial manufacturing, food and drink processing, hot yoga studios, classic car storage, print and packaging and many more.

T 01372 571200
info@humiditysolutions.co.uk
www.humiditysolutions.co.uk

Goland group | Home Improvements

info@goland.group
01908 702078
www.goland.group/homeimprovements

Goland Group Ltd, 15 Stadium Business Court, Lyon Rd, Bletchley, Milton Keynes MK1 1EX

With over 30 years of experience within the construction industry, Goland Group Ltd have the ability to deliver high end & top quality installations. We have completed & delivered high quality fit-outs on time, on programme & within budget for the designer retail market & the Museum Heritage sector over the past few years. We now want to bring that same ethos to the private sector by delivering home improvements no matter what the scale or budget, to a high quality and to a given programme fully compliant to Health & Safety rules & regulations, protecting the client & the tradesmen. We provide surveys & drawings right through to planning, to suit your style & requirements. We provide tried & tested trades that we trust to deliver top quality installations at competitive rates & on programme. No job is too small for us!

- Kitchen Installations • Bedroom Installations • Bathroom Installations • Living Room Installations
- Extensions & Lift Conversions • Complete Renovations • Bespoke Garden Offices With Full Services

Call us now for a free, no obligation quote!

STEELO

Structural Steel Fabricators.

ON-SITE

ON-TIME

EVERYTIME

Call

0208 569 8144

Email

Sales@Steeelo.co.uk

Visit

Unit 9, Fairway Trading Estate
Hounslow, TW4 6BU

Best Structural Steel Fabrication Company - London

DK Tools extend Amtech reach into builders merchants

DK Tools Limited is a family-owned company which was established in 1986, from humble beginnings. The business started out selling tools from a market stall in North West London and now they manufacture and distribute both hand tools and power tools under the Amtech brand.

For over thirty years, DK Tools have maintained their core family values and have built the business on a foundation of exceptional customer service and their 5-star Trustpilot reviews are certainly testament to that level of integrity.

Ishan Kalra, Director at DK Tools commented: "My father has built and maintained strong working relationships

with key customers across Wholesale, Cash and Carry and Retail over the years and our product portfolio now spans 2000+ tools for the home, garage, and garden. My objective is to continue with this legacy of adding value where it matters for all our trade customers".

Trade customers really value the ease of ordering Amtech stock, either via their award-winning dktools.com website or even via WhatsApp for next day delivery!

The Amtech DIY brand has also grown significantly across Independent Retail and consumers really value the free end-user support that is provided at amtechdiy.com. Furthermore, and as the cost-of-living crisis settles in, the

Amtech brand also now appears to be resonating with Builders Merchants, as both Buyers and Tradespeople begin to source more value for money, whilst still maintaining good tool quality.

You can become an Amtech stockist or register for a trade account at dktools.com.

For more information:

T 01895 435556
contact@dktools.com
www.dktools.com





STEEL BUILDING SOLUTIONS

AGRICULTURAL / COMMERCIAL / INDUSTRIAL / DOMESTIC



CASTLE STEEL BUILDINGS LIMITED are UK-wide distributors of steel building solutions and only supply British-made products in a number of colours and finishes.

SINGLE SKIN STEEL OR KINGSPAN INSULATED COMPOSITE
ELECTRIC & MANUAL ROLLER DOORS
WINDOWS SKYLIGHTS
PERSONNEL & FIRE DOORS
PARTITION WALLS
GROUND WORKS OPTIONS
INSTALLATION OPTION



MACHINE STORAGE
ANIMAL SHELTER
HAY COVER



SINGLE / DOUBLE / TRIPLE GARAGE
CAR PORTS
AWNINGS & LEAN-TOS



WAREHOUSING
FACTORIES & TRANSPORT BUILDINGS
WORKSHOPS

GET A FREE ON-LINE QUOTE AT
WWW.CASTLESTEELBUILDINGS.CO.UK
OR CONTACT US ON
01302 301402
INFO@CASTLESTEELBUILDINGS.CO.UK




BRITISH BY DESIGN & MANUFACTURE



Venetian Plastering South West



Venetian Plastering South West installs seamless finishes to surfaces using Microcement and Venetian Plaster, otherwise known as polished plaster or Italian plaster. We are a small, family run business based in Somerset, covering the UK. Both products have different qualities that are making them more and more popular in the interior, design, and construction industries.

Microcement is fully waterproof and hardwearing and is suitable for walls, floors, worktops, wet rooms, showers, steam rooms, and even swimming pools. The nature of the application means that a coherent, seamless wall-to-floor transition can be created, making a stylish, sleek appearance. There are no unsightly grout lines to clean, making the product low maintenance and hygienic. The colour choice is endless and there are several textures and patterns that can be offered. The product is applied by hand and so is truly unique to the project.

Venetian Plaster can be used for feature walls and for light water areas, such as kitchen or bathroom splashbacks and around freestanding baths. The colours are again quite limitless and the effects are more extensive than Microcement. With Venetian plaster we can create one-of-a-kind pieces of artwork for your home, from simple marble effects, to added glitter, goldleaf, or liquid metals.

This can be completely tailored to your design and is again applied by hand, creating something beautiful and bespoke between you and us.

www.venetianplasteringsouthwest.co.uk
contact@venetianplasteringsouthwest.co.uk

Office Refurb for Strand Hardware



Strand Hardware has given its company headquarters a radical make over – improving its energy efficiency, work space and creating a welcoming new hi-tech reception.

It has used products from many of its suppliers and customers for the project including new windows, fire doors, electricals, plumbing, furniture, decoration, carpeting and signage, along with some of its own ironmongery products.

The refurb in the second change project to take place at Strand Hardware in recent months and follows a review and upgrade of its warehousing processes undertaken with WMG (Warwick Manufacturing Group).

It has resulted in a more modern, open plan work space for its expanding team – encouraging greater team synergy and literally breaking down walls to silo working which had been enforced by the old layout.

Strand has occupied the premises on the Premier Business Park, in Walsall, since the company was founded more than 30 years ago and according to Managing Director Steve Marshall a little modernisation has been beneficial.

“Although Strand’s offices were perfectly functional, they were looking a little dated and our work with WMG gave us the impetus to extend our programme of improvements. Not only will it enhance working conditions for the Strand Hardware team but also convey a better image of who we are and what we are about to visiting business associates.

“Efficiency has underpinned all our recent changes. This includes energy efficiency and eco-saving measures such as the introduction of natural ventilation, insulation and energy-saving devices,” he said.

Shared facilities including board room, kitchen and bathrooms have been included in the make-over and equipment upgraded. Staff have also benefitted from ergonomically designed furniture and layout.

Its reception has been reconfigured to make it lighter and more airy. It also features digital displays to welcome visitors and showcase Strand’s extensive product range.

A key driver in the process has been digitisation – reducing paper-based processes and transferring its traditional filing system to a cloud based environment.

The company is planning an open day for company contacts and has invited Mayor of Walsall to oversee a rededication ceremony.

For more information on Strand Hardware products contact: info@strandhardware.co.uk or call: 01922 639111.



RG Wilbrey Training

At RG Wilbrey Training, we pride ourselves on occupational competence. All our Health and Safety Trainers have muddy boots experience which augments our ongoing Continuous Professional Development. This enables our training courses to be brought to life in the classroom, with real life experiences and an understanding of the demands placed on workers within the construction industry.

Rather than typical chalk and talk style of presentation, we believe in learning through fun, and doing it differently. This is demonstrated by our site set up and task based construction scenarios. Since implementation, we have seen greater engagement

and enjoyment from the learners, alongside improved pass rates, thus leading to learners demonstrating a positive and proactive approach to health and safety onsite, by removing negative connotations associated with health and safety.

RG Wilbrey are pleased to be exhibiting at The Health and Safety Event at Birmingham, NEC, in April 2023. We will be at stand 3/ K24 if you would like to come along and meet with the team.

If you would like to find out more about how we are striving to do things differently, please contact us as shown.

T 01902 420920 (opt 3)
training@rgwilbrey.uk.com
www.rgwilbrey.uk.com



OUR SITE SET UP HELPS TO BREAK DOWN BARRIERS AND MAKES THE TRAINING RELATABLE. A COMPLETELY DIFFERENT WAY OF LEARNING. THE COURSE IS PRACTICAL AND HANDS ON, JUST LIKE REAL LIFE.

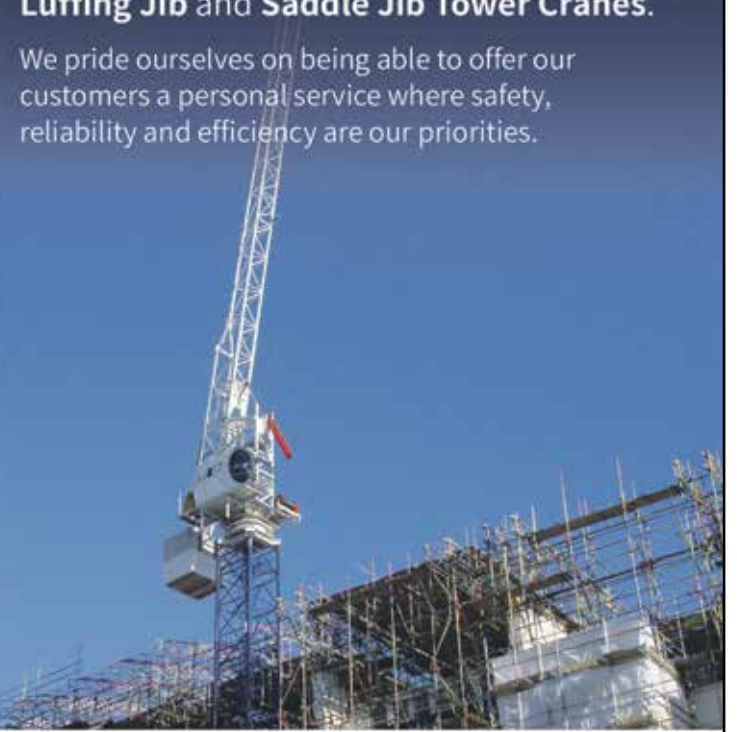
BRINGING THE TEXTBOOK TO LIFE

WWW.RGWILBREY.UK.COM

Delta Tower Cranes Ltd

specialise in the Hire, Sales, and Servicing of Luffing Jib and Saddle Jib Tower Cranes.

We pride ourselves on being able to offer our customers a personal service where safety, reliability and efficiency are our priorities.



Delta Tower Cranes Ltd
 Tel: 01753 542418 Mob: 07799 788150
 E: deltatowercrane@gmail.com

IFSM Member
 The Institute of Fire Safety Managers

IFSM
 Tier 2
 Competent Fire Risk Assessor (CFRAR)
 2022

DB FIRE SAFETY LIMITED

YOUR PARTNER FOR FIRE SAFETY

We are an independent fire safety consultancy with more than 30 years' experience.

From our office in Peterborough we are proud to service clients' premises throughout the UK. Working with a number of building contractors and architects, we provide Fire Strategy documents for buildings under construction or renovation. We will also carry out necessary Fire Risk Assessments prior to hand-over to the building owners. Our specialities are residential care premises, schools, and blocks of flats

Fire Risk Assessments **Fire Strategy Documents**

DAVID BLACK
 DB FIRE SAFETY LIMITED
 Tel: +44 (0)800 772 0559
 Email: enquiries@dbfiresafety.co.uk
 Web: www.dbfiresafety.co.uk

Unit 1, Wittering Service Station
 Townsend Road
 Wittering
 Peterborough, PE8 6AB

2020 ANNUAL AWARDS WINNER

How can householders cut their bills by investing in various forms of insulation around their houses?



Sara Allen MRICS, development director, Allen Property Consultants (Scotland) Ltd says:

Extra loft insulation: Reduces heat loss which keeps your house warmer without additional heating.

Cavity wall insulation: provides a warm internal barrier for the house from the cold. It stops the heat escaping from the property.

Floor insulation: adding a good layer of underlay under your laminate flooring, wooden floors or carpet

will trap in heat helping to keep the room warm.

Low-flow flush toilets and eco taps: can be a big overall saving on your water bill.

Many of these cost saving ideas are very cheap to purchase/install and will definitely be worth it when considering your overall costs and usage.

Allen Property Consultants Ltd is a reputable family-run consultancy. We cover a wide spectrum of property services for both commercial and residential

properties including RICS building surveys, valuations, strategic real estate management and healthcare property consultancy. Sara Allen MRICS has been a qualified surveyor for over 30 years and with a great team behind her, is able to deliver exceptional expert advice for any property investment.

T 01934 838266
bookings@allenproperty.ltd
www.allenproperty.ltd

BURNSIDE
Sheet Piling Contractors

BURNSIDE PILING SPECIALIST

PILE HIRE / SALE AND INSTALLATION
Foundation piling sheet piling movax specialist | Tubular Piling

T: 01416479331 E: enquiries@burnsideplant.co.uk
www.burnsideplant.co.uk

DYFED STEELS LTD.

The largest independent steel stockholder and processor in Wales and the South West of England.

- > Dyfed Steels is ISO 9001:2015 Quality Approved with over 30,000 tonnes of stock across the widest range anywhere in the UK, 10 branches throughout the region and a complete range of processing services.
- > We offer a personal, quality service that is unrivalled.
- > Dyfed Steels has continuously invested in the most sophisticated machinery to offer the complete range of processing services from the simplest individual cut bar to high volume sophisticated processing to the strictest of requirements.

Please visit our website to learn more and locate your nearest branch:
www.dyfedsteels.co.uk

45 YEARS OF DYFED STEELS

Keep your property and possessions safe and secure



It sadly remains the case that theft and break-ins to property remains all too frequent and a key issue for all.

If anything, the stats show that, in some areas, crime rates have materially increased in the last couple of years. Residential properties and business addresses remaining frequent targets.

The growth around second homes, including lodges, park homes and caravans, has influenced these rates. There are also reports that a downside to the rise in staycationing has also been an increase in crime statics.

The impacts here go beyond the obvious distress caused to financial losses, as well as reputational damage for businesses as well as the increasing costs of insurance faced by all parts of the chain.

As a result, property owners and occupiers are taking steps to combat theft and damage by making it harder for theft or damage to occur. Specialist security businesses are also leading the fight.

One such business is Securian Industries. Securian designs and manufacturers a range of easy to use door security devices. This is not the usual locks and chains. No, Securian's products are discrete door handle bars and door stops that keep a door protected whilst also being fast to install, fast to deploy and stylish.

Greg Allsopp, a director at Securian Industries explains more. "The business as a whole grew out of the rising rates of theft and criminal damage seen in the midst of 2020's lockdown. Properties of our own were affected too. We therefore set out to provide a range of cost-effective and simple products that help to mitigate these risks. All of our products have been designed to be installed in minutes, deployed to work in seconds and not require padlocks or keys that can be easily lost or can be difficult for some to use. It was also important that our products were attractive – there are plenty of industrial looking solutions out there but these do not necessarily fit with the decorative or lifestyle looks our customers are aiming for. Our products are therefore discrete, stylish as well as working beautifully too."

The range includes double/patio and single door bars that lock in place to prevent handles and locks being broken, and slide or drop in place door stops that can withstand significant forces to deter even a determined burglar.

Mr Allsopp commented, "Our products are being bought by home owners, business occupiers, leisure providers, care home operators and schools amongst a wider range of sectors. This just goes to show that keeping our property and possessions safe is an issue for everybody. Along with our stockists and distributors, we are pleased to be able to give customers a cheap and effective route to mitigating the risks from theft and break-in."

Securian Industries reports that it's actively seeking stocklists and distributors around the UK and Ireland with a network of stockists growing all the time and with increasing numbers of its products available for customers.

T 0330 333 7279
info@securian.store
www.securian.store

RP Associates.eu

RP Associates is a global outsourced company specialising in **Procurement, Credit Control & Marketing.**

RP Associates provide a first class service, from consultation to facilitation, ensuring all clients' needs are met, sourced and delivered.

For more information contact
roger@rpassociates.eu

Sussex: +44 (0)1825 791703 London: +44 (0)207 206 7349

Zoo Architectural Hardware

Zoo Hardware are designers and suppliers of architectural door hardware including door handles, knobs, locks, cylinders, door closers, hinges and more. All of their products are produced to the highest quality in aluminium, brass, steel and zinc. Every item they produce is selected for its quality and value for money and they never compromise quality for cheaper prices. Zoo Hardware are confident in their belief that they can offer some of the highest quality products at the most competitive prices on the market.

Their in-house design team is fully qualified in all

aspects of design and production and they constantly aim to supply innovative, stylish and cost-effective hardware solutions settling for nothing less than top quality. Design facilities at their head office means they can create, manufacture and deliver state-of-the-art products to stay in-tune with current design trends and ahead of the competition.

The Zoo Hardware product ranges cover all aspects of architectural ironmongery, including: Vier – a precision design range of levers, hinges, door closers, DIN locks and cylinders created for the exacting needs of Architects, Specifiers and Contractors; Fulton

& Bray – traditional and classic brass door hardware and accessories ideal for period and contemporary properties; Rosso Tecnica – a new European inspired range of designer levers and accessories made from SS304 and finished in a selection of new hard-wearing finishes; and Foxcote Foundries – a wide range of traditional black antique door furniture and window fittings.

View their full range of products at: www.zoohardware.co.uk or call one of their friendly sales team on: +44 (0)1228 672900 to discuss your requirements or to request a catalogue.



Looking lean - Strand makes warehouse improvements



Strand Hardware has developed leaner assembly, dispatch and warehousing processes – saving hundreds of staff hours each year – in a joint project with a crack team from Warwick University.

The project with WMG (Warwick Manufacturing Group) has optimised warehouse layout and movement for the efficient flow of picking, assembly and packing operations across key ranges. It involved measuring processes via time study and motion analysis through site visits, video capture and process flow assessment. Findings outlined cycle times and mapped the movement of people.

The resulting report outlined a series of recommendations to improve process capacity, including quick wins and minor modifications to warehouse and workstations layout to introduce time savings. This has led to the introduction of mobile Kanban shelving within the assembly area to allow components to be picked and assembled more efficiently. The double-sided racks allow bins to be restocked by a dedicated person who conveys stock between Strand's warehouse and its head office on another part of the site.

Steve Marshall, Managing Director of Strand Hardware, said that the project had been "thorough and exacting".

"Strand Hardware has grown over 30 years. Like most companies, while scaling up, we have focused on customer requirements and day-to-day business operations. We felt that the time had come to review what we were doing and whether we could be doing it more efficiently, which led to the opportunity to work with WMG.

"Having experts come into the business with fresh pairs of eyes, ask the right questions and with the knowledge to assess and analyse our operations has been invaluable. It was important for us not to disrupt warehouse activity, so recommendations had to incorporate improvements that would be easy to apply. In the long term, this will make our business leaner and more efficient – the ideal foundation for future growth," he said.

The project was undertaken with funding from the Digital Innovation for Manufacturing programme.

Strand Warehouse and Production Manager Andy Michel said that it had been fascinating to work with the University Team: "The results will make the job easier for many of the team and help Strand Hardware in its continuous improvement."

Chris Wang, of WMG SME Group added: "WMG and Strand Hardware have worked collaboratively to analyse their current assembly area in readiness for optimising their production facility. Across the three recommendations put forward, a maximum 50% reduction in cycle times per unit has been predicted which allows for a 5.105% capacity increase."

For more information on Strand Hardware's range of products contact: info@strandhardware.co.uk or call: 01922 639111

www.strandhardware.co.uk

STANZA
ARCHITECTURAL HARDWARE

Our STANZA range is designed to be both elegant and modern with the affordability to suit both consumer and contractor.

Popular with homeowners, architects and house builders throughout the UK, our Stanza ZPZ range consists of 17 classic and contemporary designer levers built on a zinc die-cast inner rose with a 50mm diameter screw on rose cover. The addition of four new amazing finishes: Oscura Matt Black, Flavo Satin Brass, Tuscan Rose Gold and Etna Bronze, and a new square rose option, now allows the customisation for a wide variety of modern interior design projects.

T: +44 (0)1228 672900
E: sales@zoohardware.co.uk
W: www.zoohardware.co.uk

For further information on this range visit our website or call one of our friendly sales team.

STANZA is a brand of Zoo Hardware

TSA
TED SINGLETON & ASSOCIATES
CONSULTING ENGINEERS

Structural Glass Design
Stairs | Balustrade | Floors

TSA's sophisticated software, analysis and calculations, ensure that you are fully compliant and provided with appropriate certification and documentation. We can certify a wide range of building elements including glass balustrades, canopies and stairways.
Get in touch now!

TSA is a design consultancy. We collaborate with other specialist engineers and architects to provide solutions to complex problems. We use the latest 3 dimensional modeling software and provide calculations, finite element analysis, 2 and 3 dimensional drawings and outputs in several formats including Building Information Modeling (BIM).

Ted Singleton
TSA Consulting
Engineers Limited
M: + 353 86 8168300

E: info@tsaconsulteng.ie
9, Blackwater House,
Mallow Business Park,
Mallow, Co. Cork, Ireland

UK's Most Advanced Picture Hanging Systems

Arti Teq®
STATE OF THE ART HANGING SYSTEMS

As a product specialist, we offer solutions for all requirements with flexible hanging systems for pictures, signage and wall decorations.

- TÜV Certified Products
- 10 Year Warranty
- Free Samples
- Quantity Discounts Available

For more information & expert advice call us or visit www.artiteq.co.uk

Eyevolution Ltd · Artiteq UK Distributor · Birmingham B24 9QR · Phone: 0121 285 5280

Wall Mounted | Ceiling Mounted
Ceiling Integrated | Cornice Integrated

Stanza Blue Editorial

Zoo Hardware is a designer and supplier of architectural door hardware, including door handles, knobs, locks, hinges and much more. Dedicated to ensuring its products meet the highest standards, Zoo Hardware uses only high-quality aluminium, brass, steel and zinc. This eye for detail and dedication to quality is of the utmost importance for Zoo Hardware and as such, the company is confident that it can provide the highest quality products at the most competitive prices.

Boasting unrivalled design skills through the company's in-house design team, Zoo Hardware assures its customers that they will receive top-end products, developed by its team of designers, who are highly qualified and experienced in all aspects of design and production. The team constantly aims to push the boundaries

of possibility for its designs, creating innovative, stylish and cost-effective hardware solutions.

The Stanza Blue ZPA range is a new and exclusive collection of designer aluminium levers built on a zinc screw on rose or aluminium backplate and is ideal for housebuilders and homeowners alike. The full metal construction of these levers utilises quality materials at a great price without compromise, whereas inferior alternatives on the market use aluminium for both the lever and rose, which can easily suffer from cross threading of the outer rose.

Offering a broad selection of lever styles to suit even the most discerning tastes, the range consists of a mix of seven classic lever



ZPA090 – Bilbao Lever

SK
SIGNATURE KAURI

THOUSANDS OF YEARS
IN THE MAKING

Sustainable furniture with a genuine story behind each piece - all of our tables are made from trees which fell naturally over 3,000 years ago.

PREMIUM BESPOKE TABLES
HANDMADE FROM ANCIENT KAURI

signaturekauri.com

STANZA
ARCHITECTURAL-HARDWARE

DESIGNER ALUMINIUM LEVERS

The STANZA BLUE range consists of designer aluminium levers built on zinc screw on roses or aluminium backplates.

Available in three distinct finishes: polished chrome, satin chrome, and matt black, suitable for any style of modern interior design projects.

T : +44 (0) 1228 672 900
E : sales@zoo-hardware.co.uk
W: www.zoohardware.co.uk

For further information on this range visit our website or call one of our friendly sales team.

STANZA is part of Zoo Hardware **ZOO**

on rose designs with the addition of three new contemporary in-house designed levers, and two lever on backplate options for the more traditional residential feel. All variations are available in three distinct finishes: Polished Chrome, Satin Chrome, and Matt Black, each one suitable for any modern or traditional interior. The inclusion of a high-quality Matt Black finish at this ranges' price point will be an exciting addition for customers, and with black levers having cemented themselves as a fashionable interior design trend, we are certain they will be a popular choice for many households throughout the UK.

The ZPA090 'Bilbao' lever with its beautifully, industrially styled knurled textured grip is a stand-out inclusion in the range and one example of the brand new in-house designed levers exclusively made for this range. By having a full aluminium construction, it is proving to be one of the most cost-effective knurled levers on the market. This, paired with the quality Matt Black finish makes the most in-demand lever and finish combination available for any interior.

The range is fully suited with finish-matched Euro and Standard Profile Escutcheons as well as a Turn & Release, of which the rose is fully removable over the turn for easy fitment via 38mm centre to centre bolt fix or wood screw fixings. Zoo Hardware is also able to supply finish-matched accessories including hinges and latches to complete any interior project.

As part of our ongoing commitment to reduce our impact on the environment, the packaging on the Stanza Blue range is 100% recyclable with no plastic packaging used at all.

For more information, please see below:
www.zoohardware.co.uk

onetile.co.uk
Italian porcelain stoneware and ceramic tiles

CREATING BEAUTIFUL SPACES

THE BEST ITALIAN TILE BRANDS - THE BEST PRICE

- Indoor & outdoor collections
- Professional, expert advice
- Exclusive offers available
- Large distribution capacity
- **DISCOUNTS** available for large orders

For more information:
T: 08000614809
E: sales@onetile.org

PLEASE QUOTE CODE:
OTHRJuly22

© Copyright 2019 by Ceramiche Atlas Concorde S.p.A.

GP Plastering Ltd



GP Plastering Ltd have been supplying plastering services for over 25 years in a nationwide compacity.

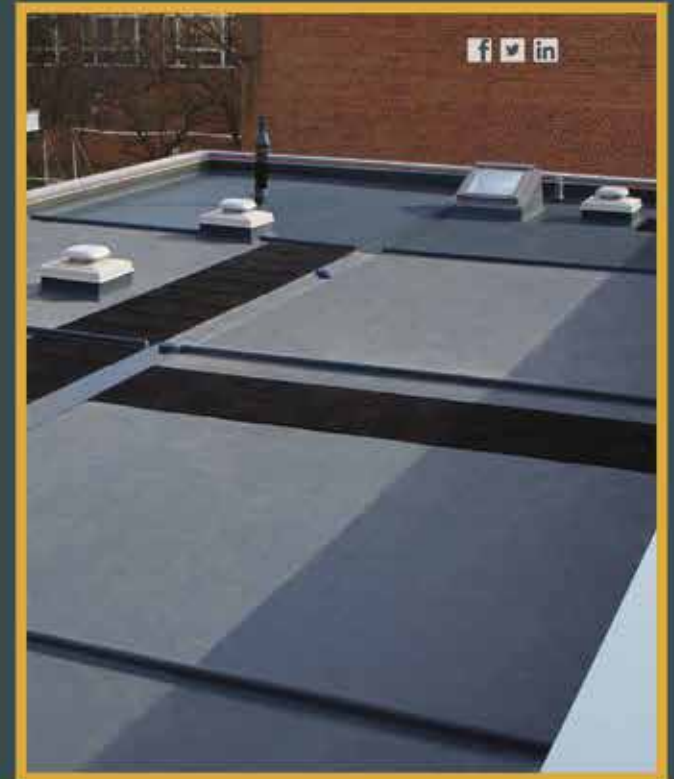
We specialise in Airless Spray Plaster Systems in the Healthcare and Educational sectors. As well as traditional to the domestic & commercial sectors.

We have a proven track record of delivery to budget and schedule on multiple projects and pride ourselves on being able to blend into any site environment.

We have successfully handed over 64,000m² this year

Please feel free to contact me personally with any enquiries or questions on the details below.

T 07432 105988
tony.emmins@gpplastering.com
www.GPPlastering.com



FLEXIBLE GRP

Providing an exceptional combination of versatility and durability. Quick to lay, with no need to strip or re-deck a roof, this fast-curing system saves time and money.

It's a single-resin solution which can be applied to a multitude of surface types and structures including vertical sections.

With two coats applied within one hour, TuffStuff® Flexible GRP will form a highly flexible, extra tough and seamless waterproof membrane - can be a solution for areas of heavy duty foot traffic.



TUFF STUFF
FLEXIBLE
GRP

www.tuffstuff.co.uk

T 01977 680250
orders@tuffwaterproofing.co.uk

BÖRGER[®]
EXCELLENCE – MADE TO LAST

FLOW OPTIMIZATION SECOND TO NONE



THE NEW BLUELINE NOVA ROTARY LOBE PUMP

The BLUEline Nova sets new standards in pump technology. With or completely without casing protection – the BLUEline Nova achieves unrivaled volumetric efficiencies.

Made for one another – the newly developed DIUS rotors in combination with the flow-optimized pump chamber ensure perfectly smooth running at pressures of up to 12 bar.



 **BLUEline
NOVA**

www.newblueline.com

KELLY TANKS



THE UKS BIGGEST RANGE OF
CONCRETE WASHOUT SOLUTIONS

RETAIN SOLIDS | RECYCLE WASHWATER | NEUTRALISE PH



WWW.KELLYTANKS.CO.UK | INFO@KELLYTANKS.CO.UK | +44 (0) 1889 508944

The advertisement features a central circular logo with the text "quality and value" at the top, three stars in the middle, and "when it matters" at the bottom. A black banner across the center contains the "amtech" logo with a registered trademark symbol. Surrounding the logo are white line-art illustrations of various tools: a screwdriver, a hand saw, a pair of pliers, a hammer, a chisel, and a hand plane. Each tool has the "amtech" brand name visible on its handle. At the bottom center, there is a QR code with "DKtools." written below it.

quality and value

amtech®

when it matters

DKtools.

become a stockist at dktools.com

Joinery craftsmanship from Bluerun

In this issue, we've chosen to recommend Bluerun for the quality and show of design in its unique craftsmanship capabilities for bespoke joinery that is made without the aid of CAD or CNC.

Bluerun manufacture quality, bespoke joinery to the domestic and commercial markets. From window packers, windows and doors, to thresholds, staircases and everything in between, "we believe every piece of bespoke joinery has been manufactured with care," stated Dee Newman, Finance Director.



Since 1991, Bluerun have been one of the industry leaders in bespoke joinery. The company was initially established by John Jones, who is the current MD and Peter Clayden, but when Peter resigned in 2008 John, his wife Doreen and son Jeremy took over as sole owners. As a family they each bring their own expertise to the team, and to enable John to semi-retire in December 2019 his daughter, Dee Newman joined the team as Finance Director to help oversee the day-to-day running of the company as well as manage the accounts, payroll, quotations and managerial duties.

Out of its workshop based in Wimbish, near Saffron Walden, Bluerun provides a manufacturing service of the highest quality. "Bluerun designed a beautiful bespoke replacement for an external door at our listed house. The staff are all very helpful and friendly and I really appreciated their skilled craftsmanship. I would definitely ask them to make things for me in the future," stated one satisfied customer.

Bluerun's craftsmanship is admired by many customers who place an invaluable trust in the company to



produce to their exact requirements. "Where we are unique is that we discuss any finer details with the client to ensure we get it to their requirements. Most pieces have to be hand finished using hand tools, to make sure it's a quality finished product. We also have an in-house spray booth, and can obtain colour matched paint, so if a client needs something in a sprayed finish, we have that capability," Dee went on to say "we don't have brochures or even a showroom as everything is made to measure. If we've made it, then it's been ordered by a client. Our website has a lot of examples of our previous work."

And, of course its portfolio of previous work does embellish the sheer artistry, creativity and skill of each experienced and highly qualified bench joiner machinist



that is part of the Bluerun team. From interior furniture to large scale external structures, the scope of Bluerun's joinery is vast and caters to a number of various sectors and industries.

It could be that you're looking for an entirely new shop front for your business or even just something to fill that oddly shaped gap in your bedroom, Bluerun only produces purpose made joinery to fit all client's personalised drawings and specifications.

The ability to think outside the box comes naturally to Bluerun when it comes to the scope of its joinery. Its workshop capabilities allow for any item to be produced whether it to be in hard or softwoods, veneered or painted panels. "Our capabilities cover anyone who needs a bespoke piece of joinery. We have even reproduced existing windows or doors for an exact match or if a client likes the design of something, whether it's a live edged shelf or table, a door or window, we can usually match it for them," said Dee.

For over 30-years Bluerun has consistently grown as a business, and one particular moment that was pivotal in the company's life came in 2020. "Our company logo and corporate image was only created in 2020, and we feel this has brought us a little more up to date as we now have a recognisable branding that people can associate with a professional company. Similarly,



we only signed up for TrustPilot in 2020, and whilst not everyone leaves a review, you will see that the ones we have are all 5 stars, of which we are very proud and appreciative of our clients' time taken to leave these reviews," mentioned Dee.

Of course the last two years has been a difficult period for all businesses to navigate, and for Bluerun it has learnt to adapt to new working conditions. Dee explained, "like others in the building industry, we have found that we have had more enquiries from the domestic market whilst people were working from home. We were very quiet during the initial two or three months after the COVID-19 lockdown, but once it was confirmed that we could continue to operate (as we are a manufacturer), we found we were busier than usual, historically."

Overcoming obstacles and challenges comes naturally to Bluerun and it's a true testament to its services that the business has continued to grow through such challenging times in the industry. Looking ahead, we asked Dee what the company had planned in terms of the future. She answered, "it would be nice to expand the workforce, but we don't feel the economy is in a secure enough place right now. In exciting news, we are currently working on a brand-new updated website that is due to go live later this year/early 2023."

For more information, see below:
T 01799 599995
dee@bluerunltd.co.uk
www.bluerunltd.co.uk

