

Building & Construction Review



Zoo Architectural Hardware

Zoo Hardware are designers and suppliers of architectural door hardware including door handles, knobs, locks, cylinders, door closers, hinges and more. All of their products are produced to the highest quality in aluminium, brass, steel and zinc. Every item they produce is selected for its quality and value for money and they never compromise quality for cheaper prices. Zoo Hardware are confident in their belief that they can offer some of the highest quality products at the most competitive prices on the market.



Their in-house design team is fully qualified in all aspects of design and production and they constantly aim to supply innovative, stylish and cost-effective hardware solutions settling for nothing less than top quality. Design facilities at their head office means they can create, manufacture and deliver state-of-the-art products to stay in-tune with current design trends and ahead of the competition.

The Zoo Hardware product ranges cover all aspects of architectural ironmongery, including: Vier – a precision design range of levers, hinges, door closers, DIN locks and cylinders

created for the exacting needs of Architects, Specifiers and Contractors; Fulton & Bray – traditional and classic brass door hardware and accessories ideal for period and contemporary properties; Rosso Tecnica – a new European inspired range of designer levers and accessories made from SS304 and finished in a selection of new hard-wearing finishes; and Foxcote Foundries – a wide range of traditional black antique door furniture and window fittings.

View their full range of products at: www.zoohardware.co.uk or call one of their friendly sales team on: +44 (0)1228 672900 to discuss your requirements or to request a catalogue.

Timber frame suppliers and builders in Berkshire

Vision Development is a family run business that understands the importance of providing high quality homes for self-builders, builders & developers. Vision has their own manufacturing facility based in Beenham, Berkshire where they have a range of high quality, durable and sustainable materials for manufacturing their timber frame systems. Their timber frame factory is available to view, giving customers a better understanding of the timber frame construction process.



The flexibility of design, speed of construction and allowances for first fix trades means choosing timber frame for your project will mean your entire project is brought to fruition for sooner with a lot less disruption. Vision's timber frame systems also benefit from excellent thermal efficiency, considerably reducing energy bills and the requirements for additional heating systems.

Vision believe that each project they receive should be treated as individual and as such, priced accordingly. Vision

provide fixed costs to their Client's that allows for more accurate budgeting.

All materials used are sustainably sourced and all their frames are manufactured and installed by trusted and experienced teams. As well as the above, Vision are certified to ISO 9001:2015 standard, ensuring a strong consistent customer focus along with quality products and services.

To get in touch with Vision directly to discuss your own project, call them on: 01189 712181 or email your drawings through to them at: info@vision-dsl.com. Their website has a host of information on their services and past projects they have completed, here are a selection of the beautiful homes they have supplied to their client's: www.timber-frame-suppliers.co.uk



Bluerun Ltd
Turn to page **03**



Event Clean
Turn to page **05**



Clima-Tech
Turn to page **06**

ROSSO TECNICA
ACCIAIO CON STILE

ROSSO TECNICA is our new and exclusive range of European inspired designer levers. Manufactured from Grade 304 stainless steel and finished in a new selection of stunning hard-wearing finishes, these levers are the perfect accompaniment to the latest trends in interior fashion.

AS PART OF OUR ONGOING COMMITMENT TO REDUCE OUR IMPACT ON THE ENVIRONMENT, THE ROSSO TECNICA RANGE IS SUPPLIED WITHOUT ANY PLASTIC PACKAGING. NO POLY-BAGS ARE USED IN THIS RANGE.

T : +44 (0) 1228 672 900
 E : sales@zoo-hardware.co.uk
 W : www.zoohardware.co.uk

Rosso Tecnica is part of Zoo Hardware

Heritage and Contemporary Homes Enhanced by Shou Sugi Ban®

Do your build projects demand construction materials that deliver visual aesthetics, environmentally sustainability and long-lasting performance? Let us introduce Shou Sugi Ban® charred timber cladding.



Exterior Solutions has learnt and developed the traditional Japanese technique of charring timbers. Our expert team created the Shou Sugi Ban® range to offer a variety of coloured, grained and textured finishes. From award-winning contemporary design to the sensitive renovation of heritage sites, our charred timber cladding fits the brief.

All our sustainably-sourced timbers undergo a controlled burning process at our on-site workshop, with exceptional quality controls. The natural resins are drawn out and carbon forms the surface layer.

It seems contrary, but the process of

charring timber increases its resilience to burning, as well as providing natural weatherproofing.

Whether used internally or externally, our timber boards are supplied fully treated and ready to install. Low maintenance and with a lower environmental impact, they can provide a practical and impressive finishing touch to your build project.

Download the Shou Sugi Ban® catalogue from our website or contact Exterior Solutions on: 01494 711800 for samples, or to arrange a visit to our Buckinghamshire showroom.



Barnes Associates
Turn to page **07**



Vandercastele
Turn to page **14**



Hardlife Utility
Turn to page **17**

Smoke extraction solution

Fire safety remains a top priority for all involved in the construction industry, with many manufacturers offering many solutions. GEZE, a leading manufacturer of door and window control systems, offers one more, which they believe is a unique solution for smoke extraction systems in the market place.

The RWA K 600 retractable arm drive can be fitted to emergency exits on escape routes and in the event of a fire it can be used as a fresh air supply which when the fire alarm is sounded the door opens automatically allowing a large



amount of air to flow into the building and forcing smoke out.

The powerful drive with high torque opens a door to 90° in less than 60 seconds. Yet the door remains readily accessible due to the freely positioned activation of the lever by means of a pressure roller.

The RWA K 600 is perfect for use in supply air systems where large opening angles are required, it is suitable for single and double leaf smoke and heat extraction fresh air doors and

can be installed on both the hinge or opposite hinge side.

Said Andy Iredale, National Sales Manager for Automatic Doors and Window Control, "The RWA K 600 is a unique solution in the extraction of smoke from a building in the case of fire. It's suitability for use in a variety of situations makes it perfect for use on escape routes."

To find out more about the RWA K 600, email: info.uk@geze.com or visit: www.geze.co.uk

The power of thoughtful design



Founded in 2012, Southside Waterjet is situated on the south side of the river Thames. Southside Waterjet is a family friend run fabrication company dedicated to an innovative approach. It believes in exceptional design and attention to detail. With a reputation firmly built on quality, reliability and with a fresh approach to the likes of which haven't been seen before, Southside Waterjet has become a leading name in its industry favoured by architects, interior designers, contractors and customers across the UK.

Today, Southside Waterjet is made up of a small but dedicated team of professionals who have decades of experience in custom fabrication techniques that ensure our quality is never compromised.

Do you long for an island that will take centre stage in your kitchen? Are you wanting to create a wow factor in the smallest room in your house? For residential customers Southside Waterjet has the capabilities to fabricate everything you need including customised flooring and wall coverings, luxurious worktops and splash backs, bathrooms, wet rooms and vanities, bespoke furniture and artwork, outdoor kitchens and much more.

For commercial customers, Southside Waterjet win contracts with large numbers of contractors, architects, designers, and stone and tile distributors. It fabricates material to their exacting requirements creating architectural solutions, bespoke and customised wall, floor and staircase designs, furniture trends and swimming pool solutions.

For more information, please see below:
T 02032 212133
www.southsidewaterjet.com



Southside waterjet.

CUTTING EDGE SOLUTIONS

At the leading edge of CAD technology. Southside Waterjet craft raw materials into high-quality design solutions with unparalleled precision and endless creative possibilities. A service that leads itself to decisive and visionary clients who are ready to cut through in their industry.

Let our skilled team seamlessly transform your ideas into a one of a kind project.

PHONE (02032) 21233
WWW.SOUTHSIDEWATERJET.COM



The art of 'old school' joinery



Bluerun Ltd was established in 1991 by John Jones the current Managing Director and his wife Doreen, who remains the company's secretary. Highly regarded as one of the industry's finest high quality, bespoke joinery manufacturers, Bluerun Ltd has an impressive history to which it has remained at the forefront of the industry.

Bluerun Ltd has the capabilities to manufacture most things from timber, hardwood, softwood, panels and sheet material. Some common items Bluerun Ltd manufacture for the domestic market include windows, doors (exterior and interior), bi-folding doors, staircases, bespoke storage units and wardrobes, all of which come with the option of being sprayed in primer or to a finish.



"Everything we manufacture is purpose made for each specific job. Nothing we do is 'off the shelf,' it's all made to measure to meet every client's requirement," stated Dee Newman, Finance Director.

Headquartered in Wimbish, near Saffron Walden, Essex, Bluerun Ltd tends to work with clients within a 20-mile radius. "For our commercial clients, we can usually quote using drawings and then send items by courier. If a joinery item can be manufactured from drawings only, whether it's for commercial or domestic clients, we can send it virtually anywhere in the UK for the client to have it installed," said Dee.

Bluerun Ltd's loyal team of experts, boast a traditional 'old school' approach to joinery, whilst still attaining professional, high-quality skills and expertise. "As a specialist joinery manufacturer, we don't use CNC or CAD in our manufacturing. All of our items are designed in-house, unless the client has a detailed drawing. Our 'old school' approach means we still use hand tools to produce all our items, and we also have the capabilities to spray items in-house," mentioned Dee.

Yes, Bluerun Ltd do use modern techniques including power tools and machines to machine timber, however, all its designs are without the aid of computers. Everything is created within its in-house workshop and crafted by



Team at Bluerun Ltd

hand to the highest quality. Bluerun Ltd's years of success have been passed down through generations, similar to evolution and survival of the fittest, the best techniques have surpassed the test of time. Combining traditional and modern techniques, the overall process has become more efficient for both the client and the company.

The majority of the company's production is for commercial builders and manufacturing, providing all types of commercial joinery products including large scale repeat production runs of windows, frames and doors, to both large- and small-scale customer internal and external projects such as Multiplex Cinema fitouts, Shopping Centre fitouts and various Homebase stores around the UK.



Velfac is the UK's leading brand of composite windows and doors, specified for the system's slim and uniform frames, offering a contemporary style and exceptional thermal performance. Dovista is a group of 14 distinctive brands with strong local roots on the European market for vertical windows and exterior doors. Partnering with both B2B and B2C, Dovista is well-known and highly respected in the industry for providing products of the best quality. Bluerun Ltd is proud to manufacture Velfac and Dovista mainframes and packers for the commercial sector.

"For the domestic sector we have the capabilities to reproduce windows and doors to match existing ones. Whether it's a new build or a period home, we will try our very best to produce replacements windows and doors for these," stated Dee.

Bluerun Ltd has an extensive portfolio showcasing previous work done for both the commercial and domestic sectors. One notable project was when Bluerun Ltd was approached by a client to reproduce some replacement gates for his listed property. The listed status extended as far as the property gates, so they had to match the existing ones that were beyond repair. Utilising its expertise and experience, Bluerun Ltd suggested using Iroko, a suitable hardwood, which could then be treated with white Bedec barn paint to match the client's requirements. Using black ironmongery to hang the gates, the client was hugely impressed with the final product.



Since joining the office team fulltime in December 2019, Dee mentioned how life has altered since COVID-19, "John Jones (my father) was furloughed with everyone else, but when we re-opened a few weeks later, he remained semi-retired. He turned 80 in August 2021, so is now available for advice without coming into the office. He still calls in every few weeks to make sure we're all ok and doing well."

With firm plans to expand the business and acquire new clients, Bluerun Ltd has seen a surge of interest from domestic clients since COVID-19 and is happy to be busy, connecting with clients again.

"We still have COVID-19 looming but we are positive and excited for the future. We're a small and friendly team who work well together and take pride in our work. For examples of our previous work customers can check our website portfolio as well as our Facebook and Instagram social media pages," said Dee.

For more information, please see below:
 T 01799 599995
 dee@bluerunltd.co.uk
 www.bluerunltd.co.uk
 www.facebook.com/bluerunltd
 www.instagram.com/bluerun_joinery



Leaders in DIY and Home Improvement tools



Amtech is a DK Tools Limited brand, who maintains extensive experience since the company's establishment over 30 years ago.

DK Tools Limited is based in North West London and maintains 50 employees in its state-of-the-art facility with eco-friendly lighting. DK Tools Limited started from humble beginnings and has grown significantly, especially through its Amtech brand which has helped the company become one of the most successful British DIY and Home Improvement companies on the market. The company is also a member of the British Home Enhancement Trade Association (BHETA) and places an importance on bridging the generational skills gap in DIY.

"We manufacture and distribute hand tools and power tools for the DIY and Home Improvement industry. Our products are used for many applications. This extensive range covers various core categories, including Automotive and Cycling, Decorating, Gardening, Hand tools, Hardware and Fixings, Hobby and Craft, Lighting, Plumbing, Power tools and Accessories, Safety and Workwear and Security," stated Ricky Johal, Head of Marketing.

From small minor fixes right up to full scale big projects, Amtech has the tools and hardware needed for a successful DIY project and offers over 2,000 tools and accessories for home, garage and garden.

"The product range(s) are geared to offer quality and cost-effectiveness across both B2B and B2C. We offer a three-year guarantee on all hand tools and a two-year guarantee on power tools and any warranty claims are managed via our dedicated consumer/end-user website," said Ricky.



The company is committed to operational excellence and has been recognised by The Business Magazine for its continued operations during COVID-19, to pick, pack and deliver throughout the COVID-19-related lockdowns.

"Our services during recent lockdowns were acknowledged in The



Business Magazine. Our brand and service to consumers has also been endorsed by The Telegraph Business Club," added Ricky.

One of the biggest advantages at Amtech is its valued relationship, that it maintains with its Wholesale and Retail distribution partners, which has helped the company gain an exceptional customer retention rate.

Amtech also benefits from a regional sales team working across the UK and Ireland, while offering an award-winning eCommerce platform for its trade clients.

Ricky continued, "Also, we have essentially developed an insight-driven brand and product proposition that has disrupted the industry in a positive and engaging way, by removing barriers-to-purchase for younger demographics, who require educational content that can be accessed via our YouTube channel."

The company's commitment to equipping all generations with the skills and tools required to bridge the gap in home improvements and DIY, is just one example of the ways in which Amtech provides exceptional customer service. In fact, the company places the utmost importance on its company values, providing a family orientated work ethic, and delivering exceptional customer experience for both trade customers and consumers.

In terms of recent developments for the company, Amtech is proud to have been



recognised for both its products and people, who have won numerous awards recently, including Lighting and Electrical product of the year, Hand tool and Accessory of the year, Industry personality of the year, DIY product of the year and has also won 'E-commerce Solution of the Year for its trade website (dktools.com).

As the company looks ahead, Amtech maintains many ambitious plans including to continue increasing its brand equity and retail footprint through award-winning products and content strategies that add value across multiple B2B and B2C touchpoints. The company is also now an ISO 14001 accredited tool company and will continue to work on reducing its environmental impact going forward.

Amtech plans to continue to innovate through its award-winning range of products and provide for its customer's ever-evolving need and this dedication to its customers is echoed through its multitude of reviews and recommendations.

In closing, Ricky stated, "Our Trustpilot ratings and reviews reinforce our passion for improving the customer experience and adding value to purchasing decisions for both trade customers and end-users (consumers) of our products and services."

If you would like to find out any more information on the company, please see the details below:

T 01895 435556
contact@dktools.com
www.dktools.com
www.amtechdiy.com

Retail Systems
awards 2021
WINNER



Keep your event gleaming with Eventclean

In this issue of Building and Construction Review, we are proud to feature Eventclean as our Commitment To Excellence.

Eventclean is a specialist in the cleaning and waste management of outdoor and corporate events. The company was established in 2014 by Marc and Eddie Fowkes. With ample experience, Marc and his brother Eddie have been working in the Event industry since 1994, having started as production runners with Mean Fiddler.

The company provides cleaning and waste management services to the outdoor and corporate event industries and can also provide temporary toilet and shower facilities, from single plastic portaloos to luxury trailer units. Eventclean can also provide a complete wastewater management, removal and disposal service. Some of its services include: event cleaning and litter picking, waste management and disposal, waste recycling services, portable toilet cleaning and attending and supply of compostable food packaging and cleaning products.

With over 25 years' experience, the company works proactively with the organiser of each event to find appropriate, workable solutions for any situation. Eventclean can provide tailor-made waste management plans for the most complicated and demanding event situations. This flexible and positive approach, has positioned the company with the ability to be able to deliver a reliable, high quality service ensuring the smooth running of the event regardless of any unexpected problems that may occur.

Committed to quality, the company is members of the Production Services Association, The National Outdoor Events Association and maintains ISO9001, ISO 14001 and CHAS accreditation.

From the company's base in South Wales, with its premises' at Treforest in the South Wales valleys and in Cardiff Docks, Eventclean provides expert services throughout the whole of the UK, and has experience of events both large and small, including some of the most high profile events in the country.

We caught up with Marc, who outlined and told us about some of the company's latest projects.

Marc stated, "We have been helping to deliver quality, world class events in Cardiff for many years, including the Rugby World Cup Fanzone in 2015, the UEFA Champions League Final in 2017 and the Volvo Ocean Race in 2018. We also introduced waste sorting and recycling services to the National Eisteddfod in Cardiff Bay in 2018 and have been the cleaning contractors to the RHS Flower Show for many years.

We were the cleaning contractors to the Stereophonics Concert at the Racecourse Stadium in Wrexham in June 2018 and the two night Massive Attack concert at Filton Airfield in March 2019. We also cleaned the Pete Tong and Caffish & the Bottlemen concerts in Cardiff Castle and provided the waste



management services for the Noel Gallagher concert in Cardiff Castle in May 2019, as well as the Tafwyl Festival, also in Cardiff Castle."



Eventclean works closely with Cardiff Council's Special Events Team, who are involved with the cleaning and waste management of some of the largest outdoor events held in Cardiff including: the Wales Velothon, Cardiff Half Marathon and the Cardiff International Food & Drink Festival held in Roahl Dahl Plas each year. In addition, the company also provides cleaning services to Cardiff's Winter Wonderland and Callennig.

In regards to recent developments during the COVID-19 pandemic, Eventclean has been involved with several test and virtual events and has developed COVID safe event cleaning systems and protocols.

"We were the cleaning and toilet suppliers to the virtual Tafwyl event, broadcast and streamed from Cardiff Castle as well as the virtual Eisteddfod event from Llancaiach Fawr."

Marc continued, "More recently we provided the COVID safe cleaning services to Christmas in the Castle at Cardiff and the Swansea Alpine Village. At both these attractions, we used a two stage cleaning system for all surfaces, comprising of an initial clean with 80% alcohol liquid followed by a thorough wipe down with anti-virucidal liquid. We also have specialist fogging equipment to ensure anti-virucidal products reach the most inaccessible areas."

Another noteworthy development for the company, Eventclean has created a range of sanitiser products for use in the event industry. The products range from luxury automatic dispensers to virtually indestructible steel post dispensers and the company also manufactures a range of small portable sanitising solutions including single use sachets of hand gel.

Whether it's for holding an indoor or outdoor event, if you are looking for a first class service, then Eventclean is here for you, and you can rely on their team to deliver the highest standard of service.

For any further information or if you would like to speak to the company directly, please get in touch using the details featured below.

T 01443 844492
M 07841 120411
info@eventclean.co.uk
www.eventclean.co.uk



Clima-Tech edges leading position in the renewable heating field

Clima-Tech was founded in 2015 by Ashley and Franki Shemmings. What started off as a maintenance and servicing company, soon evolved into a specialist, multi-faceted service with a proven track record in the electrical, refrigeration, domestic, and commercial sectors.

As a well trusted and well-established brand name in the renewable energy field, Clima-Tech specialises in providing a range of core services including:

- ▲ MCS certified and trust mark approved installers
- ▲ Heat pump design, maintenance, supply, install and commission
- ▲ Heating systems
- ▲ Electrical system design and installation
- ▲ f-gas related work
- ▲ System commissioning
- ▲ Air conditioning specification – design, install, servicing and maintenance
- ▲ Solar PV specification, design, installation, repair and maintenance
- ▲ Underfloor Heating and Plumbing works
- ▲ HVAC engineers
- ▲ Approved installers of the new boiler upgrade scheme (BUS).

A notable highlight for Clima-Tech is the number of industry related awards it has received and been recognised for. In 2019, Clima-Tech was commended second place at the national renewable heat installer and contractor of the year awards, in 2020/21 was announced as the East of England Energy Efficient Champion, and in the same year received commendation placing third at the national renewable heat installer contractor of the year awards.

Its services are held in high regard amongst many other industry professionals as well as its customers, who because of the service they receive, remain with the company for many years. One customer boasted, "I cannot praise the service and expertise of Clima-Tech high enough. I tell everyone who comes to look at our air to water heat pump installation 'This is the company to deal with! I called in Clima-Tech and met Ashley Shemmings and I knew that his company understood what was needed and would deliver it. The workmanship in the external 'boiler house' is most impressive. We are delighted with the selected equipment and the highly professional installation."

Clima-Tech has many qualifications to its name including Microgeneration Certification Scheme (MCS), Renewable Energy Consumer Code (RECC), IWA, and REFCOM. Furthermore, Ashley has trained to the highest level, holding qualifications such as City and guilds 2360 NICEIC certified, City and guilds F-GAS, B-PEC G3 unvented, B-PEC Heat pump design, and B-PEC water regulation.



Clima-Tech is hands on and works closely with its clients to ensure that the best service is delivered. Focussing heavily on the renewables sector, Clima-Tech holds vast eco-friendly benefits for its customers, highlighting the importance of going green to save money.

In recent news, Clima-Tech is excited to be a part of the latest government grant scheme. "Starting in April 2022, the government has announced a 'Boiler Upgrade Scheme' (BUS) to which we are now part of. The BUS scheme has replaced the Domestic Renewable Heat Incentive (RHI) that ended on the 31st of March 2022," stated Franki. The new grant will encourage property owners to install low carbon heating systems such as heat pumps, through BUS. These grants are designed to help property owners overcome the upfront costs of low carbon heating technologies and will be open to domestic and small non-domestic properties in England and Wales from April 2022 to 2025.

Boosting a homes green credentials can help to improve overall cost savings for both homeowners and landlords. With this in mind the government has a Green Homes Grant Scheme that offers funding to help pay for the cost of energy savings measures. Clima-Tech fully supports this grant scheme and through its skill set and experience can help make homes warmer and more energy efficient for the end user. One way to which it delivers this is by offering a flexible and cost-effective heat pump system installation, designed to save the end user money whilst requiring minimal maintenance. Each heat pump can be designed and installed to fit all requirements, whether that be in a commercial or domestic environment.

Based in Earl Soham, Suffolk, Clima-tech is a family run business that over the years has integrated a company ethos of 'doing it the right way.' By always going the extra mile for its customers it can deliver a service that is of the highest quality. Ashley has over 20 years' experience in the industry as a fully



qualified engineer and has all the capabilities to complete the installation of air conditioning, electrical and heat pump systems. No matter the size of the job, Clima-Tech can design and install from start to finish bespoke systems to meet your needs. All installations include warranty and aftercare services to give you peace of mind.

If you're interested in these services, Clima-Tech can design and survey a completely bespoke system to meet your exact requirements that is competitively priced meaning you only pay for what you need with a free no obligation quotation.

Find out more below:
T 01728 684437
ashley@clima-techservices.co.uk
www.clima-techservices.co.uk



The UK's leading tree survey consultancy

Over the past 12 months, Barnes Associates have been busier than ever, receiving a wide, and varied workload, its team of surveyors have not only grown in numbers but have been gaining further training on many specialist areas that the company work in to better serve its customers.

The company's core areas of work include providing tree surveys for development BS5837, including arboricultural impact assessments and tree protection plans. If you're developing near trees, a BS5837 tree report maybe requested which Barnes Associates can provide. We have extensive experience in this field and having undertaken additional training in this area, Barnes Associates can provide high quality plans which allows information to be clearly understood by quickly identifying tree dimensions, and considering categories, shade potential and Root Protection Areas (RPA). "It's often-worthwhile holding back on designing the proposal until the root protection areas (RPA'S) and tree categories are known, if the proposal can be positioned outside RPA's or away from high grade trees this can be defended more easily," stated one surveyor from Barnes Associates.

Working alongside landowners, developers, architects, and planners, Barnes Associates is sure to find the most realistic, cost-effective solution to tree problems for both small and large-scale developments. When working on building sites, it's important that BS5837 tree surveys are provided onto topographical plans for small and large-scale schemes to ensure an accurate base plan is used. "Our tree data information provides the tree constraints for a site, including Root Protection Areas (RPA) that need to be taken into account when designing a site. Avoiding these areas will make the planning process easier. Once the layout is provided, we overlay the tree data and provide feedback on any alterations required, perhaps there are infringements that can be designed out. If we are brought onto the design team early on, we can help iron out tree-related



issues. This is part of the arboriculture impact assessment works (AIA). If sites require engineering solutions to accommodate trees, we can advise on this too as we work very closely with engineers to provide solutions where others have failed," stated Sue.

For sites that need to work close or near to trees, Barnes Associates can provide Arboriculture Method Statements (AMS) that offer more detailed information on how to undertake safe work, whether that be soil excavations or foundations nearer to trees. All plans provided are in CAD 2D or 3D format and there is also scope to receive a full tree canopy and site assessment by drone. Perfect for the harder to reach areas such as woodlands or Ash Dieback in woodlands, a drone will deliver a better understanding of canopy features and vitality levels, as well as providing high quality aerial photographs for future planning and landscape design. This service is known as the Arboriculture Further Investigation Drone (AFID) and is operated by one of the company's qualified UAS pilots. The drone

can reach a top altitude of 120m, take videos or photographs in 4k quality and is now available for small and large scales sites. Furthermore Barnes Associates also provide tree risk assessment surveys for clients in the education, industrial, and housing sectors amongst others.

When speaking with Sue, she mentioned some recent changes that have occurred within the company. "At the beginning of April 2022, Tree Diagnostics Ltd was merged into Barnes Associates Ltd. This change streamlines our administration for the two companies and enables the consultants, and sales teams to be effective in customer care and serving our widening customer base. Tree Diagnostics is a specialist sales department importing specialist equipment by Fakopp Enterprises (from Hungary), and we provide training for tree surveyors in the UK. The contracting side of Tree Diagnostics was undertaken by the specialist team at Barnes Associates more often for the use on construction sites."

Barnes Associates' ability to offer such industry specific services showcases a level of expertise and experience that is unrivalled to any competitor. Having highly accurate knowledge of all things 'trees' means it does not provide a multi-disciplinary approach. "We even have other multi-disciplinaries arborist often come to us for our specialist services which they are unable to deliver to their customers," stated Sue.



Continuing its growth trajectory throughout 2022 and beyond is paramount to Barnes Associates as it is now well-known as being one of the leading tree consultancies in the UK. Its ability to deliver answers and solutions where others have failed is the lifeline to which many of its customers rely on. Often taking on projects that have failed, Barnes Associates works to achieve success for these clients in gaining planning in regard to trees.

For more information, please see below:
T 01423 322371
info@barnesassociates.co.uk
www.barnesassociates.co.uk



Making the future bright

Bright Ideas Development provides help and support to organisations that require assistance to deliver their development program and ambitions.



"We have two main features to our services, one is to offer advice to people who are intending to undertake development, be that the private sector, housing association or local authority. We have vast experience in both public and private sector development. We are well placed to offer people a helping hand in appraisal work, finding sites, costings, procurement and project management. We have great links with Homes England too. Secondly, we undertake projects ourselves," added Martin Hawthorne, CEO (pictured).

In terms of its own undertaken developments, Bright Ideas Development initiated and designed a scheme in



Middlesbrough developing and producing housing. "I initiated the scheme in Middlesbrough where I found the sites, undertook the original designs, did the appraisals and worked with Middlesbrough Council. Once they had seen what I had done, we created a Partnership with Middlesbrough Development Company and we're now producing 61 new homes and they are all presold," said Martin.

Not only investing in developing properties in Middlesbrough, but moreover investing in the area itself, Bright Ideas Development is helping to breathe new life into the heart of central Middlesbrough.

Martin explained, "We have gone into partnership with Middlesbrough Development Company to ensure that the units are being built and we have project managing the whole thing. We have 22 houses and 45 apartments, in a difficult part of Middlesbrough and we are going to completely revitalise it. It's more than just building buildings and thinking were finished; it's about changing the area, but adding value to the land and people. We want to make it an area that people want to live in, we are the forerunners here for the whole of the Middlesbrough area and its already starting to pick up in terms of residential offer and we are very proud of that."

A massive undertaking of £7.8 million, the Middlesbrough



scheme is a large-scale project and Bright Ideas Development has insisted that its development incorporates ecological elements. The company is focussed on looking ahead to the future and ensuring its properties are future proofed.

"We want to have great design features and good ecological credentials. We want to move onto the next schemes maintaining this eco agenda in housing. We want every homeowner to know that a Bright Ideas house is helping them to do their bit for the environment.

Martin continued, "In the buildings in Middlesbrough, we have insisted that they are heated using air source heat pumps. I wanted to insist on air source heat pumps so that we can use zero carbon, green power to heat the houses. We've also got a special deal with Virgin to produce a fibre optic cable for this scheme that will have 1,000MB for each property, so people can work from home use their transport less and build a happy working and family life with the capacity of 1,000MB. This fibre optic cable from Virgin, will give people the ability to keep ahead of the technical curve – you really are future proofed."

For more information, please see below:
T 07714 412689
www.brightideasdevelopment.co.uk



Building Products & Services



Fabsec FBEAM
The software behind the plated cellular beam

Fabsec cellular beam designer has announced that its Firebeam (FBEAM®) Software is now available to all design engineers.

To find out more about the Firebeam license go to www.fabsec.co.uk

FBEAM 2022.0.1

Accredited: Fabsec FIREBEAM license is now available to external users



Designing plate girders for the fire condition is an established regime within FBEAM that has been used for many years by our team of engineers to validate your designs for fire. Fabsec are pleased to announce that this function will now be made available to our external users.

This exciting new development will allow engineers to ensure that their designs are not only structurally adequate but also provide the required structural fire resistance, a function unique to Fabsec users, that mitigates the need to uplift sections late in the design process.

The introduction of the Government's new Fire and Building Safety Acts



will increase responsibilities and legal obligations that designers and specifiers of buildings will need to be cognisant of, along with the potential impact it may have on their liability. For those valued customers who want to take a proactive step towards meeting these changes, we have broadened the scope of design features available within FBEAM.

Some of the features and benefits now available are:
▲ Fabsec beams can be engineered for the fire condition, giving the engineer certainty that the beam is efficient in both fire and ambient conditions and allows the user to specify fire durations in 15 minute



increments up to 120 minutes
▲ Use of Sherwin Williams' low VOC (Volatile Organic Compound) FIRETEX Intumescent products
▲ Range of offsite intumescent products
▲ Products with excellent impact, abrasion and weather resistance
▲ Access to products with supplementary testing to demonstrate explosion resistance.

Contact sharon@fabsec.co.uk for access to the FIREBEAM Fire License.

Contact
T 01937 840641
support@fabsec.co.uk
www.fabsec.co.uk

FOR ALL YOUR BUILDING NEEDS!

Experience unbeatable service today

**Grant
& Stone**



**Building
Supplies**
A company well built



£40 OFF
YOUR FIRST
ORDER!

Bring this advert in to any
Grant & Stone or RGB
branch to receive £40 off
your next qualifying order*

www.grantandstone.co.uk | www.rgbltd.co.uk

Find us on social for
news & offers!

*Terms & Conditions apply. Orders must be over £250 (exc VAT) to qualify. Only available to new customers at this time. No cash alternative. Offer ends 31/03/2022. Grant & Stone Ltd. Rawle Gammon & Baker Ltd. Registered address: Unit 2, Mill End Road, High Wycombe, Buckinghamshire HP12 4AX.



SAF Woodland Management

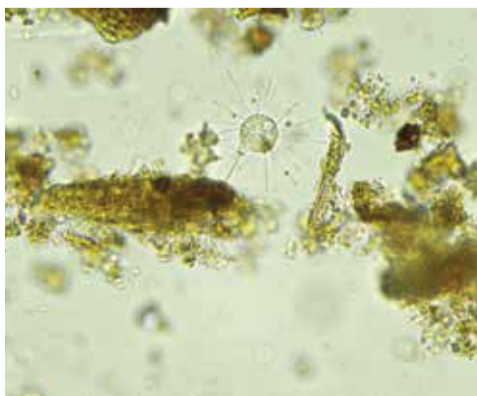


In the 1960s Maureen Iddon was a pioneer of the post war era. Her decision to start a plant nursery, earned her a reputation in growing and breeding rare herbaceous plants that spanned more than 30 years, including exhibiting at national Royal Agricultural and Horticultural Flower Shows. Observing plants, nature and creating a healthy growing stock has been the bedrock of the family business across three generations.

Grandson Daniel Iddon switched the family nursery to trees in 2019. Growing healthy plants is essential, but the challenge is whether we can grow trees to also suit their planting environment. This challenge drove Daniel to relocate his nursery operations to his woodland in Pembrokeshire. Planting trees from the growing trials in his woodland, he noticed how the trees were changing outside of the carefully controlled environment (soil moisture, air humidity, chemical food source), adjusting to the new climate local to the woodland with an abundance of bacteria, fungal species and microbes in the soil.

During growing trials to support the SAF Woodland investment in the Ellepot growing system, opportunities for improvement in the growing medium was identified. SAF Woodland are now developing a living soil to bring the woodland environment into the nursery. The research is being funded by The Forestry Commission Tree Production Innovation Fund (TPIF) in 2021 that has been designed to encourage the development and adoption of new technologies and ways of working that will enhance the quantity, quality and diversity of tree planting stock available for planting in England. By 2025, the government is seeking to dramatically increase tree planting to 10,000 hectares per year in England. To meet these planting targets domestically will require a corresponding increase in the UK production of tree planting material.

Contact
T 01239 611980
info@safwoodland.management
www.safwoodland.management



Reliable and safe access equipment

Atlantic Access Ltd are scaffolding erectors and hirers based in Liverpool and the North West. Providing safe, access equipment for a multitude of different jobs including roofing, bricklaying and much more, for industrial, domestic and commercial projects.

Maintaining a committed, skilled and loyal team, Atlantic Access Ltd offers a highly professional service and utilises its experienced and expert team of long serving employees, of 10 years plus. This has positioned the company with the industry knowledge to assist


with varying sized projects and Atlantic Access Ltd has built a strong reputation for its high quality service, personable approach and competitive prices.

The company offers its services for all residential work, new build properties, demolition work and commercial. Some of its recent commercial projects include: Vinci IHP on Preston Royal Hospital, the Boohoo main office in Manchester for Hightown Construction, Grahams Liverpool flyovers demolition, Parkinson


Construction on Oldham Royal Hospital and Salford Hospital, John Turners on Whiston Hospital, ongoing Maintenance package for Daresbury Science Technology Park and ongoing works for the National Trust on Speke Hall and Chambre House in Liverpool.

If you would like to find out more, please see the details below:
Steve Long, Director,
T 0151 549 1551
M 07917 193357
ste@atlanticnw.co.uk
info@atlanticnw.co.uk





Scaffolding Erectors and Hirers based in Liverpool and the North West



Link House, Bradman Road,
 Knowsley Industrial Estate, Liverpool
 L33 7UR

Tel: 0151 549 1551
 Email: info@atlanticnw.co.uk

ii equi cool

Introducing the new Transcool E3

Energy Efficient-low power draw

Compact & Light

Adjustable Vents for direct airflow

Use stationary or mobile



Use 12v, 24v or AC mains electrical power

Coollest Air delivery

Transcool E3 is Designed & Constructed in Australia

Environmentally friendly

£279

Introductory Price

Portable directional air cooling for your Garden Pod, Cabin, Workspace or Gym

Call for a demo today !



Tel: 0777 438 5057
 Email: suzy@iequii.com
 www.iequii.com
 Instagram: @equicool

INTEGRATED WASTE MANAGEMENT SOLUTIONS

throughout the UK




- Septic tank emptying
- Ultimate off-road jetting & tankering
- Tanker and Vactor services
- High pressure drain jetting
- Oil & fuel interceptor cleaning
- Deep well cleansing

Call 01335 345545

Email cpjltd@aol.com

www.cpjenvironmental.co.uk

Field management software that puts managers in control, and their team to work – that's Re-flow

Numerous landscaping businesses have been taking advantage of Re-flow's powerful set of features to digitally transform their operations. From health & welfare management to tracking equipment and vehicles, a single, comprehensive digital solution allows you to take a step back from the endless slog of manual, paper processes and fragmented legacy spreadsheet systems. Instead of chasing endless phone calls and battling rigid software packages that can't adapt to their needs, businesses using Re-flow gain the time to focus on the work that matters.

The heart of our digital solution lies in our desktop dashboard. Built according to user feedback, overengineered systems and technical jargon make way for a simple yet powerful interface that places all the tools you need to effectively command your operations at the forefront. You can even adapt Re-flow to your processes, branding, and language. From here, instantly communicate with Re-flow app users – your operatives in the field – establishing a seamless link between site and office.

When everyone's connected, everyone can experience the benefits of Re-flow's

Re-flow Field Management

comprehensive suite of features, enabling you to:

- ▲ Keep your teams focused with digital job packs. Assign to individuals or entire teams and attach all necessary job information including drawings, plans, method statements, locations, and equipment.
- ▲ Enable safety on site by building your own digital forms or selecting from a comprehensive catalogue that ensures your site remains compliant and auditable with punctual and accurate submission of form data.
- ▲ Stay in control by tracking the status of all your assets – employees, plant, vehicles, clients and more. Quickly resolve defects with access to full servicing records and automatically scheduled maintenance reminders.
- ▲ Become flexible in the face of sudden changes with our messaging system. Instantly communicate updates with all



relevant parties and share the resources they need to continue working.



The benefits don't just start and end with your organisation. With Re-flow on your side, give your clients the confidence your services deserve, enabling you to tender bigger contracts and improve retention. With easily exportable reports, quick invoicing, and live evidence of works on site, you can keep customers satisfied, and deadlines met.

"With 50 plus landscapers running around 4 counties and a satellite yard in Cornwall, we've got a lot of people to worry about, and we really needed to improve communication. Re-flow has just done so much more than that. Everything we do is just – 'put it on Re-flow!' – risk assessments, method statements, accident and near miss forms, vehicle checks, toolbox talks, drawings, playground inspections, everything you can think of – it just fits perfectly. We've been doing it for a year and a half, and we still feel that really, we're just scratching the surface of what it can offer us."
Oli Hemson, Commercial Manager,
Tony Benger Landscaping

Explore Re-flow's full set of features:
shorturl.at/qGIPQ

T 01392 574001
info@re-flow.co.uk
<https://re-flow.co.uk>

Field management software that puts you in control, and your team to work



Instant access to 40+ forms including: Safety Checks, Risk Assessments, Near Miss, Daily Work Records and more. Use forms to update records, job statuses, send notifications and emails.

- Jobs and Tasks
- Scheduling
- Forms and Workflows
- Form Builder
- Automation
- Notifications and Messaging
- Live User Tracking
- Client Portal

Re-flow
Field Management



To find out more:
call 01392 574002
www.re-flow.co.uk



The TP Group: The UK's leading multi-disciplinary contractors

Established in 1986, The TP Group has quickly grown to become one of the UK's leading multi-disciplinary contractors.

Based in Essex and operating across London, the Southeast and the Home Counties, our mission is to provide the highest quality of service possible to our clients, with a consultative approach and our 'can do' attitude.



With over 30 years' experience, our specialist teams will provide you with all the expertise your project needs and, above all, get the job done.

Over the decades, we have expanded our range of specialisms and set up dedicated divisions to reflect our expertise.

Whether you're looking for Painting Solutions, Passive Fire Protection, Surfacing & Coatings, Landscaping, or an integrated mix of services, our professional teams are always on hand to work with you on your projects.

Why choose us?

Our clients know we're not salespeople. We are experienced workers who have all started in junior positions and worked our way up, from the labourers to the

Managing Director. We know the length of time things take, the problems we need to overcome, what's achievable and what's not. And we'll always be honest with you.

The TPG ethos combines a common-sense approach with a 'can-do' attitude. We fully understand our clients' needs and service them in a way that fills them with confidence, often inspiring them to request other services from us.

We will always go the extra mile and, most importantly, get the job done to your complete satisfaction – no exceptions. This is our promise to you: Service Without Compromise.

Contact

T 01277 841415
info@thetpgroup.co.uk
www.thetpgroup.co.uk



Eco Clipper FM4 Sport for sporting grounds



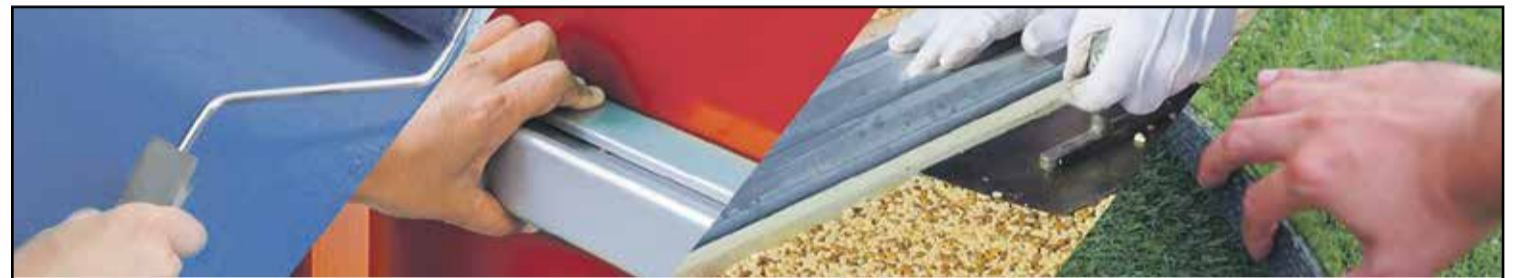
Eco Clipper, known for electric mowers for the turf industry, has introduced a special version for the maintenance of sports and recreational grounds. The 4.11m wide front mower features four independent cutting decks. For the FM4 Sport, the side decks can be folded in independently, allowing for narrow passages to be mowed.

The smooth decks with fast rotating small blades ensure a high quality cut and good clippings dispersion. The clippings are also spread well in wet grass. This makes it possible to schedule this mower almost independently of the weather.

The Eco Clipper mowers are further distinguished by the high possible mowing speed. This means that on average a sports field can be mowed in less than fifteen minutes with an Eco Clipper FM4 Sport.

To operate the mower a 40 HP tractor is already sufficient. The electricity to drive the mower is generated by a PTO driven generator. For larger tractors, the generator can be fitted on the front mower. For smaller tractors and optimized weight balance Eco Clipper offers a separate generator unit for behind the tractor.

Contact
 T +31 (0)6 46 75 35 60
info@vanmac.co.uk
info@ecoclipper.com
www.ecoclipper.com



THE UK'S LEADING MULTI-DISCIPLINARY CONTRACTORS

The TP Group guarantees quality and peace of mind. If you're looking for an expert partner for your painting, fire protection, surfacing and landscaping projects then you can rely on us to get the job done – on time and to the highest standard.

With over 30 years' experience in providing construction solutions across the UK, our specialist divisions are ready to support your project with the right skills, knowledge technical support and of course our 'can do' approach.



Call 01277 841415

info@thetpgroup.co.uk | www.thetpgroup.co.uk



'Dedicated to offer the best mowing system for maintaining large area turfgrass'





Eco Clipper FM4 Sport for sporting grounds
www.ecoclipper.com
ECO CLIPPER

Keep your property and possessions safe and secure

It sadly remains the case that theft and break-ins to property remains all too frequent and a key issue for all.

If anything, the stats show that, in some areas, crime rates have materially increased in the last couple of years. Residential properties and business addresses remaining frequent targets.

The growth around second homes, including lodges, park homes and caravans, has influenced these rates. There are also reports that a downside to the rise

in staycationing has also been an increase in crime statics.

The impacts here go beyond the obvious distress caused to financial losses, as well as reputational damage for businesses as well as the increasing costs of insurance faced by all parts of the chain.

As a result, property owners and occupiers are taking steps to combat theft and damage by making it harder for theft or damage to occur.

Specialist security businesses are also leading the fight.

One such business is Securian Industries. Securian designs and manufactures a range of easy to use door security devices. This is not the usual locks and chains. No, Securian's products are discrete door handle bars and door stops that keep a door protected whilst also being fast to install, fast to deploy and stylish.

Greg Allsopp, a director at Securian Industries explains more. "The business as a whole grew out of the rising

rates of theft and criminal damage seen in the midst of 2020's lockdown. Properties of our own were affected too. We therefore set out to provide a range of cost-effective and simple products that help to mitigate these risks. All of our products have been designed to be installed in minutes, deployed to work in seconds and not require padlocks or keys that can be easily lost or can be difficult for some to use. It was also important that our products were attractive – there are plenty of industrial looking solutions out there but these do not necessarily fit with the decorative or lifestyle looks our customers are aiming for. Our products are therefore discrete, stylish as well as working beautifully too."



The range includes double/patio and single door bars that lock in place to prevent handles and locks being broken, and slide or drop in place door stops that can withstand significant forces to deter even a determined burglar.

Mr Allsopp commented, "Our products are being bought by home owners, business occupiers, leisure providers, care home operators and schools amongst a wider range of sectors. This just goes to show that keeping our property and possessions safe is an issue for everybody. Along with our stockists and distributors, we are pleased to be able to give customers a cheap and effective route to mitigating the risks from theft and break-in."

Securian Industries reports that it's actively seeking stockists and distributors around the UK and Ireland with a network of stockists growing all the time and with increasing numbers of its products available for customers.

T 0330 333 7279
info@securian.store
www.securian.store



-  **KEYLESS SECURITY**
-  **EASY INSTALL**
-  **IMPACT TESTED**
-  **PROTECT YOUR PROPERTY**
-  **BURGLAR PREVENTION**

KEEP YOUR PROPERTY AND POSSESSIONS SAFE AND SECURE

MX-3 DUAL POSITION DOOR JAMMER



PX-4 SINGLE HANDLE FRENCH DOOR BAR LOCK



MX-1 DOOR JAMMER



PX-3 FRENCH DOOR BAR LOCK



MX-2 PIN DOOR JAMMER



SEE OUR FULL RANGE AT:

WWW.SECURIAN.STORE
INFO@SECURIAN.STORE
0330 3337279

Timber Build



Invest in natural capital

- Create beautiful woodland*
- Offset carbon*
- Increase biodiversity*
- Restore habitats*
- Prioritise sustainability*
- Achieve biodiversity net gain*
- Align with SDGs*
- Engage your client base*



Creating Tomorrow's Forests
for wildlife, people, and the planet

WWW.CREATINGTOMORROWSFORRESTS.CO.UK

External timber cladding; size does matter


The Timber Decking & Cladding Association (TDCA) is an independent, not-for-profit advisory organisation – established to influence and promote good industry practice. This year, our focus is around highlighting the key information that those buying, selling and using external timber cladding should be aware of.

A specific subject is the size of cladding profiles, specifically tongue and groove (T&G) which is an interlocking system where size matters most. According to BS8605 – External Timber Cladding Part 1: Method of Specifying, for medium movement timbers such as Siberian larch, the profile width for a T&G board is restricted to a maximum of 125mm.

Further guidance on tongue dimensions and movement gaps is provided with bigger gaps and tongues being required for wider boards; at 125mm wide board the standard states a minimum movement gap (mg) of 4mm, tongue width (tw) at least 15mm and thickness (t) at least 7.5mm.

For those looking for added assurances of quality, the TDCA operates the CladMark quality accreditation schemes which cover products, suppliers and installers. They provide audited verification of compliance with good manufacturing practices and sound installation techniques trusted by the TDCA and the wider industry.







The Timber Cladding Handbook is available as a free pdf download with a printed version available for £12 (inc p&p), go to: www.tdca.org.uk/publications






Timber Trade Federation
promoting the use of wood

THE TIMBER CLADDING HANDBOOK

for specifiers, buyers and installers



VANDECASTEELE
H O U T I M P O R T

Discover our world of timber



**Nature's
first choice**



Ask for your personal login to our online portal



Prompt delivery



More than 50 decking species

Endless possibilities for decking and cladding

Contact
Bergstraat 25
8511 Aalbeke
België
vandecasteele.be

dave@vandecasteele.be
+44 15 94 83 43 32
genevieve@vandecasteele.be
+32 56 43 33 00

WernerCo brings Podium Safety Awareness to PASMA Tower Week

WernerCo, the leading access equipment specialist, and manufacturer of BoSS® towers, is announcing its support of this year's PASMA Tower Week with a series of safety awareness videos.

The globally celebrated event, launched by PASMA, will bring the industry together between 6-12th March to promote positive messages about mobile access towers, prefabricated tower scaffolds and low-level

work platforms, showcasing the different applications in which these can be used and helping professionals to work safely by demonstrating best practice.

WernerCo is supporting this year's event by contributing to PASMA's 7-part bitesize safety video series with content focusing on podium steps; demonstrating best practice with how to choose a podium, and how to use it safely. The video series, which will

also include content on tower stabilisation, fall protection, EN1004 safety standards and more, will be available to view on PASMA's social media and YouTube channels during Tower Week.

Approved PASMA training centre, and recent gold sponsor of falls prevention charity, The No Falls Foundation, WernerCo is dedicated to improving the safety of those who work at height through supporting educational

safety initiatives and risk awareness across the industry.

Gurjeev Bola, Product Manager at WernerCo, stated, "Falls from height remain one of the biggest causes of workplace injury; and when risks are overlooked due to the misconception that using equipment that isn't far off the ground doesn't come with dangers, accidents are all the more prone to occurrence. Educating users towards podium standards plays a crucial role in working safely, and we're looking forward to bringing this vital element of tower safety awareness to this year's PASMA Tower Week.

"We are proud to work closely with PASMA, and to support their education initiatives in work at height safety. It is through relationships like these, between manufacturers and safety-orientated foundations, that as an industry we can hopefully work towards our shared goal of improving safety awareness and ultimately reduce the number of work at height accidents we see each year."

WernerCo is an approved PASMA training centre and offers industry standard training programs on the safe use of mobile access towers and low-level access equipment. For more information, please visit: <https://www.bosstowers.com/services/training>

For more information on Werner products, please visit: www.wernerco.co.uk



3R RESTORATION

REPAIR - REFURBISH - RENEW



3R Restoration is a specialist contractor offering a wide range of services associated with repair, refurbishment and restoration work. Whether a historic building, a monument, residential buildings or commercial space we strive to resolve complex issues including design elements such as fixing systems and material interfaces.

We provide knowledgeable advice on materials from procurement to installation and maintenance. We will also provide technical and testing data, planning and programming with the focus on key milestones and deliverables. Our solid network of trusted suppliers allows us access to a wide variety of materials to suit your project, from natural stone to brickwork, render and more.



tenders@3r-restorationltd.co.uk | 07585 955563 | www.3r-restorationltd.co.uk



Welcome back Matt



GEZE UK is delighted to welcome back Matt Gregory as Specification Manager for the north.

Matt will be responsible for assisting architects and specifiers with compliant solutions for all products in the GEZE range which includes automatic doors, window technology and manual overhead door controls.

In addition, he will produce detailed and risk assessed NBS specifications which are supported with BIM objects and present GEZE's RIBA approved CPD to help architects and specifiers expand their knowledge.

Matt first joined GEZE in 2017 and after a spell outside the industry he returns to the company bringing with him extensive knowledge of entrance systems and automatic doors from his time as Automatic and Industrial door engineer and previous sales management experience.

Matt said, "I am pleased to be back working with GEZE and their respected and varied product range, they have a strong brand and excellent reputation in the door industry. I look forward to working closely with architects and specifiers, creating strong collaborations with them and providing a quality service."

Richard Richardson-Derry, National Specification Manager added, "It's great to be working with Matt again, he brings enthusiasm and extensive experience to the team. He will be an important part of the company's continued growth."

For more information about GEZE UK's comprehensive range of automatic and manual door and window control products, visit: www.geze.co.uk

GP Plastering Ltd

GP Plastering Ltd have been supplying plastering services for over 25 years in a nationwide compacity.

We specialise in Airless Spray Plaster Systems in the Healthcare and Educational sectors. As well as traditional to the domestic & commercial sectors.

We have a proven track record of delivery to budget and schedule on multiple projects and pride ourselves

on being able to blend into any site environment.

We have successfully handed over 64,000m² this year

Please feel free to contact me personally on the details below. With any enquiries or questions.

T 07432 105988
tony.emmins@gpplastering.com
www.GPPlastering.com



onetile.co.uk
 Italian porcelain stoneware and ceramic tiles
CREATING BEAUTIFUL SPACES

© Copyright 2019 by Ceramiche Atlas Concorde S.p.A.

THE BEST ITALIAN TILE BRANDS - THE BEST PRICE

- Indoor & outdoor collections
- Professional, expert advice
- Exclusive offers available
- Large distribution capacity
- **DISCOUNTS** for Architects and Contractors

For more information:
 T: 0800 061 4809
 E: sales@onetile.org

PLEASE QUOTE CODE:
 OTBPApril22

[f](#) [t](#) [i](#) [p](#)

SK
SIGNATURE KAURI

THOUSANDS OF YEARS IN THE MAKING

Sustainable furniture with a genuine story behind each piece - all of our tables are made from trees which fell naturally over 3,000 years ago.

**PREMIUM BESPOKE TABLES
 HANDMADE FROM ANCIENT KAURI**

signaturekauri.com

SAMANTHA LORD
 INTERIOR DESIGN

We are an Award Winning*, commercial interior design firm based in Cheshire operating throughout the UK. Specialising in Care Home design, including design for dementia, we have a reputation for creating inspiring, luxurious interiors, meeting clients' specifications, operational requirements, timescales and budgets.

Working with a range of project stake-holders, we can tailor our packages to include interior design, fit-out and project management, enabling developers & builders to offer their clients a full turn-key solution.

*Pinders Healthcare Design Award Winners: 2018, 2020, 2020.
 LABC Building Excellence Award Winners: 2021

01244 336992
studio@samanthalord.co.uk
www.samanthalord.co.uk

The Studio,
 1a Salmon Court,
 Rowton, Chester
 Cheshire CH3 6AT

Breathing new life into ancient timber

The story of the ancient kauri tree begins over 50,000 years ago in the late stone age. Humans were yet to set foot on the islands we now call New Zealand, and the kauri tree forests stretched for miles across the untouched landscape. Fast forward to today, and these same trees are finally being brought back to the surface to live again in the homes of a lucky few.

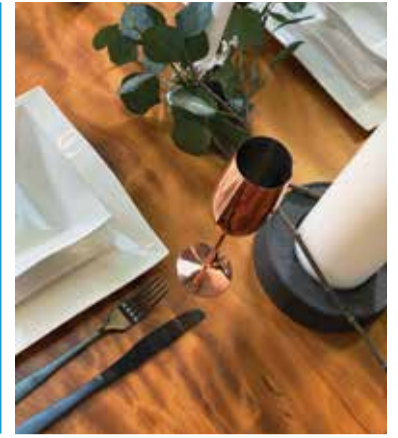
Our exclusive range of tables are handmade

from this finite resource with care and attention to detail at every stage. Each piece is truly unique and has a genuine story to tell. Custom made to each client, our tables are timeless yet functional and suit those who are looking for quality, craftsmanship and character from the furniture in their home or business.

Sustainability is at the heart of everything we do – no trees are chopped down to create

our furniture and any carbon produced from shipping is offset. Our furniture is built to last a lifetime and be passed on to the next generation. Let us help you and your clients create a truly special piece of furniture that will become a centrepiece for many years to come.

T 0800 048 5689
info@signaturekauri.com
www.signaturekauri.com



Outsourced opportunity

RP Trading followed a lifetime in business of the Founder Roger Payne, who began his career in Banking, before moving into Sales, Real Estate & Property development, prior to 25+ years in the construction industry, mostly at Board level.



After taking 'early retirement' in 2004, a decision was made to return to business life.

This led to the formation of 'RP Associates' as a Management Consultancy to utilise Roger's 40+ years of experience, offering Consultancy to other businesses, both large and small, specialising in the areas of Sales & Marketing, Procurement, IT, Financial & Cash Management and much, much more...

It was on that foundation RP Trading was incorporated just over 3 years later at the start of 2009.

Since then, RP Leisure Services & RP International GCC have joined the Group, plus other interests in The SteelX Corporation and PPE Solutions Global.

Although working remotely, RP Trading always remains part of any Client's Team, whether retained or contracted, serving their Client's needs and demands at rates that in themselves show savings over regular staff costs and payable by just one simple monthly invoice.

For more information, email: roger@rpassociates.eu, call their Sussex Office: 01825 791703 or London: 0207 206 7349.

ZARGES cases continue to deliver for vaccine rollout

ZARGES, the leading provider of cases for the transportation of hazardous goods, is continuing to support the NHS's COVID-19 vaccine booster programme with its K470 case, enabling the safe and hygienic transportation of the vaccine from manufacturer to deployment centres.



Transporting the vaccine at the right temperature is essential to preserving its efficacy. For the transport operators tasked with getting the vaccine from manufacturer to deployment during the initial roll-out in 2021, it was vital that they invested in rigorously tested temperature controlled casing.

ZARGES's K470 solution was especially configured to meet these requirements. A lightweight, aluminium solution which is available in 25 standard sizes and capacities, from 13 to 829 litres, the K470 universal box has proved a practical, effective means of transporting the vaccine.

Crucially, cases in the K470 range can provide unbeatable temperature-controlled options. In real-world testing environments, ZARGES cases have achieved storage temperatures of -74.3° – making it the ideal container of choice for cold chain logistics.

To learn more about the full scope of ZARGES's transportation casing offering, please visit: www.zarges.co.uk



WWW.HARDLIFEUTILITY.COM

01525 851912

CONTAINER SHELTERS FROM £24 PER SQUARE METRE



STORAGE TENTS FROM £29 PER SQUARE METRE



LIVESTOCK SHELTERS FROM £57 PER SQUARE METRE



ALSO AVAILABLE SCANDINAVIAN STYLE HEAVY DUTY STORAGE

- INDUSTRY LEADING PVC HEAVY DUTY PVC FABRIC.
- CHANNEL STEEL TYPE CONNECTION FOR ADDITIONAL FRAME STRENGTH AND SUPERIOR WIND AND SNOW LOADINGS.
- CONDENSATION RESISTANT COVERS AVAILABLE.

FROM £40 PER SQUARE METRE

Packers: Avoiding the Voids

When it comes to packing out spaces during construction, there are times when it is essential to maximise the 'fill' so as to minimise stress especially when dealing with high loads. In this case a solid component of uniform cross-section and no voids is indispensable. Equally, there are times when a flexible component is desirable when those spaces are of irregular shape.

Often, a packer is not required to carry heavy loads, in which case its density and



composition is less important. Indeed, a packer of softer material to provide a cushioning effect between components may be desirable.

Stadon Level offers different types of packers for various applications:

- ▲ Solid rigid packers for high load bearing
- ▲ Solid flexible packers for everything else
- ▲ Hanging packers for vertical alignments
- ▲ Wedge packers for adjustability.

Take a look at: www.stadon.co.uk



Offsite construction: West Fraser's SterlingOSB Zero is the answer to green, speed and cost demands



Speed and efficiency favour off-site housebuilding; off-site favours timber frame; and timber frame favours West Fraser's SterlingOSB Zero. The result is less reliance on traditional site-based trades and a re-shaping of the housebuilding sector.

In a recent House of Commons research briefing addressing the housing shortage in England, it was estimated that 340,000 new homes would need to be supplied every year to meet demand: <https://commonslibrary.parliament.uk/research-briefings/cbp-7671>. Offsite timber frame construction could be the solution for housebuilders and using West Fraser's SterlingOSB Zero is just the ticket in terms of green, speed and cost when considering essential board materials. In fact, MTW Research forecasts a rapid rise in timber frame buildings across the residential and commercial sectors in 2022: <https://www.marketresearchreports.co.uk/timber-frame-market-2022/timber-frame-market-size.htm>.

Offsite construction is one of most environmentally-conscious processes in the industry through the use of sustainably-produced materials manufactured locally around the UK and Ireland.

Why timber frame?

The growth of timber frame is changing long-established practices within housebuilding as the construction industry embraces the idea of off-site manufacture. This approach is due mainly to the fact that offsite manufacture means a huge reduction in the site-based activities that define a traditional building firm. The reduction in on-site activity means that, once the building's foundations are installed, erection of the main structure follows very quickly, typically taking only two or three days to complete. New timber-framed homes can therefore be brought to market at a much faster rate than is possible with traditional brick-and-block.

Structural timber technology addresses many government concerns associated with the procurement of housing – including environmental impact and energy efficiency, as well as speed of construction and cost. The materials that go into a timber frame system are generally more sustainable and more energy efficient than traditional masonry.

The SterlingOSB Zero range from West Fraser

Manufactured using renewable heat from on-site biomass boilers, West Fraser's SterlingOSB Zero is a sustainable, low-energy product with excellent physical performance characteristics. West Fraser's OSB portfolio comprises SterlingOSB Zero 3, SterlingOSB Zero Tongue and Groove, and SterlingOSB Zero StrongFix. They are variants of the precision-engineered OSB3 board; BBA-approved and designed for humid conditions. The board is certified according to the guidelines of the FSC or PEFC.

To find out more about West Fraser's carbon negative status, visit: <https://uk.westfraser.com/carbon-negative>

For further information on West Fraser's products, call: 01786 812921 or visit: <https://uk.westfraser.com>

CONSTRUCTION SITE SIGNS

ALL THE SAFETY SIGNS AND PPE YOU NEED AT THE BEST PRICES!

20% OFF

ALL CONSTRUCTION SIGNS AND SAFETY SIGNS use code: **CON20**

Signs 2 Safety 0800 328 0310

www.signs2safety.co.uk

CONTRACT SERVICES CLEANING LTD
EST 1962
INDUSTRIAL CLEANING (DIY)

Tel/Fax: 01482 835568
Matthew Nicholson 07477027983
Lana Nicholson 07447996112
E-mail: contract_services@hotmail.co.uk

60 YEARS IN BUSINESS

Contract Services Cleaning Ltd is a family run business based in Hull with 60 years of experience in the cleaning industry. It was founded by William Nicholson in 1962 and is now run by Matthew Nicholson (William's Son) and Matthew's wife Lana Nicholson.

We always aim to provide the best service in all our jobs. We have a wide range of services we provide in those included are window cleaning, jet washing, general property cleans either new builds or a residential property. For more information on our services please contact us.

Offices
Commercial
Hotels, Hospitals,
Warehouses

MOBILE SIGNAL SOLUTIONS

www.mobilesignalsolutions.co.uk

BOOST YOUR MOBILE SIGNAL

Our Signal Boosters will boost 3G, 4G & 5G Phone Signals

- ✓ Ofcom Compliant
- ✓ Experienced Engineers
- ✓ 3-year Warranty
- ✓ Fair Pricing

Surveys £295 + VAT
Commercial Installation Nationwide

MSS SIGNAL BOOSTERS

Email: sales@mobilesignalsolutions.co.uk
Phone: +44 1245 791964

SafeContractor APPROVED

Demand remains high for infinity rooflights

Knowsley-based toughened glass specialist, TuffX, is delighted to report a strong start to 2022 for its Infinity range, with continued high demand for its Infinity rooflight products.

Since TuffX's launch of its Infinity range at the end of 2018, there has been a steady and on-going increase in demand for both its standard and walk-on varieties of rooflight. This sustained upward trend has paved the way for TuffX to recently begin extending its current factory – with construction works completing in Autumn this year – to further enhance production capacity for its entire Infinity range.

TuffX's Infinity rooflights are designed to bring more natural light into the home and increase its flow between floors, offering an effective modern alternative to roof lanterns

when forming part of an orangery, full rear extension, or when used for basement conversions and roof terraces. The range has proved increasingly popular with homeowners, as well as builders and installers, thanks to its sleek, contemporary yet low-maintenance aluminium finish, along with a hassle-free 'drop-in-and-seal' installation that requires no additional assembly of the units on site.

"With full time and hybrid models of home working remaining the norm for many, there are still high numbers of homeowners approaching builders and window installers to make home improvements that increase, or simply improve, their workspace and living spaces," said TuffX's Commercial Director Paul Higgins.

"We're seeing ever more interest and enquiries for our

rooflights, which are available in a range of glass finishes and glazed into a powder-coated aluminium frame as a complete unit. With our rooflights installers can add a simple, easy-to-fit yet high-value contemporary product to their portfolio of customer offerings, which we can deliver directly to site throughout the UK.

"We're delighted that after 25 years at the top of the trade we continue to be a strong reliable supplier, consistently offering products our customers want even under the challenging current economic circumstances."

To find out more about TuffX and the entire Infinity range, please visit: <http://www.tuffxglass.co.uk>

T 0845 3400 200



Tel: 0845 3400 200 Email : sales@txpro.co.uk

Tuffx Processed Glass Ltd, Nexus House, Randles Road, Knowsley Business Park, Knowsley, Merseyside L34 9HX



infinity
Framed RoofLight

- Thermal aluminium, fully glazed system
- Double 1.2 U-Value, or Triple 0.7 U-Value
- Available in clear, solar & privacy glass
- Anthracite Grey frame as standard
- Delivery 3-4 working days on standards

Standard Stock Sizes

- 1000mm x 1000mm*
- 1000mm x 1500mm*
- 1000mm x 2000mm*
- 1000mm x 2500mm*

*Internal opening size

Maximising the flow of natural light



THERMAL WALK ON ROOFLIGHT

Thermal aluminium, fully glazed, walk-on rooflights designed to transform dark basement or roof terrace areas, allowing natural light to flow in the rooms below, whilst maintaining the thermal properties within the home.

- Walk-on toughened laminated glass
- Suitable for internal & external installations
- Quick turnaround times
- Bespoke Sizes available
- Available in a choice of clear, privacy & anti-slip

infinity
Walk on Roof Light

Introducing Golden Hour Wine



Project: Golden Wine Hour
Product: Neutro Chevron HW16603
Architect: GDP Design Build

Taking its inspiration from early 20th century Paris is the stunning Golden Hour wine shop. Capturing the unique charm of Parisian boutiques, this elegant space sells an array of sustainable wines from across the globe.

To create a space that exudes effortless style along with maximizing the sense of lightness, Hawwoods was selected to supply a stunning wood floor solution for this neighbourhood wine shop in Florida.

Neutro Chevron from Hawwoods is paired alongside lush soft green walls to create a retail space that evokes warmth and familiarity with its light wood hues and chevron design. To further accentuate the warm tones of the wood, bespoke fittings and furniture have been selected that perfectly complement the parquet floor. The final touches to this raw and textured material palette include polished brass, polished marble and cotton twill all which help to bring the space to life without detracting from the natural beauty of the wood. With the help of Hawwoods, this one-of-a-kind space has been transformed to create an inviting space with a hint of Parisian charm.

Contact
info@hawwoods.com
www.hawwoods.com/uk



Qualitative and Quantitative Fit Testing and Fit Test Training

We have 20 trained and experienced fit testers plotted across the country to provide you with a personalised and professional service covering all of your fit testing needs. Several of our fit testers are fit2fit accredited.

Whether it's your standard pass/fail Qualitative fit test for disposable and half masks or ffp3 respirators or



the Quantitative fit testing method which eliminates the guesswork associated with error-prone qualitative fit test methods we use the PortaCount Pro Respirator Fit Tester 8030 fit tester, which can now quantitatively fit test so

many types of respirators – gas masks, SCBAs, respirators. If the mask requires fit testing, count on the PortaCount Pro fit tester to provide the fastest and easiest HSE (UK) and OSHA (US)-compliant fit test method. We've got you covered, nationwide. We also provide fit test training at our Head Office in Winnersh, Wokingham – The Train the Tester course to provide you with knowledge, skills and confidence

or Train the Tester RPE Refresher, which hands on and practical.

The process is simple, contact Andy at: andy@cavity-fit-test.co.uk or 0118 214 6192 to get your local fit tester booked today. Please visit: <https://www.cavitydentalstaff.co.uk/qualitative-fit-testing> or <https://www.cavitydentalstaff.co.uk/quantitative-fit-testing>



Compact and powerful stump grinders from Predator

Predator is an industry leading supplier of high performance, narrow access tree stump grinders, which was established in 2003. The company's founders were originally working in the tree care industry, offering tree stump removal to their clients. Back then, stump grinders were often large wheeled or tracked machines. The machines were frequently built in the US where they have plenty of space to manoeuvre their machinery. In the UK, back gardens tend to provide difficult access, which creates a struggle for arborists attempting to get their stump grinding machinery into a back garden.

"The founders were used to this same problem, and saw a need in the market for a compact tree stump grinder that are powerful enough for commercial stump removal on large sites, but also compact and narrow, to be able to get through the tight garden gates of the UK. The first Predator stump grinders built were the narrow tracked 28X, which were only 26 inches wide and therefore able to get through any



garden gate, but with a 28 horsepower diesel engine and deep grinding depth, they could handle nearly any size stump," said Simon Bradshaw, Predator Sales.

From its location in Henley on Thames in Oxfordshire, and its 30 dealer and service centre locations around the UK and globally located dealers in North America, New Zealand and Australia; Predator supplies cutting edge, tree stump removal tools for Arboriculture professionals, Plant Hire firms, Local authorities and Contractors worldwide.

"We are the only tree stump grinder company that focuses exclusively on the design and supply of narrow access stump removal machinery, making us the best choice on the market for companies and individuals in the UK, where difficult access to the stump is the norm. We offer a comprehensive, affordable range of stump grinders, from portable tools you can carry, all the way to more powerful radio controlled tracked machines," added Simon.

One of the most remarkable machines within Predator's range is its best seller; the Predator 38RX.

The Predator 38RX is a radio controlled, tracked machine which is 26 inches wide and maintains an impressive 38 horsepower. Specifically designed to provide narrow access and high productivity, the Predator 38X is able to handle tough access stumps located in places such as back gardens and rough terrain commercial sites. "We have now upgraded the unit with a dozer blade and tow bar. Making it the narrowest machine on the market for its power and performance. It will now grind 22 inches deep, almost twice the depth of the closest competing machine," stated Simon.

The Predator 38RX has been designed to meet the ever toughening regulations, and as such, the noise levels are extremely low and the machine utilises its refined fuel injected Kohler EFI engine, resulting in minimal vibration. The Predator 38RX is a highly productive and innovate machine, providing an easy to use, low maintenance and compact solution.

In terms of recent developments, Predator saw an increase during the pandemic in response to people



taking on more garden, commercial, construction and landscaping projects. Simon explained that, "Our dealer network is constantly growing, prior to the dealer network being launched in 2018, we were selling direct to customers.

Now it is far more convenient to buy and service Predators' as there is often a dealer or service centre on their doorstep. It has made it more important to forecast required components, parts and stock requirements to keep up with demand. Though the COVID-19 situation made manufacturing very challenging, with component delays, the Arboriculture industry was also incredibly busy in 2020."

Predator maintains that it will continue to look at new ways to improve upon its machinery and strives to always provide new solutions to make its machinery more compact, with increased power and performance.

For more information, please see below: **T 01189 404929** www.predator-mfg.com



Manufacturing excellence since 1982

We are celebrating our 40th year in business this year at Fisher & Company! We manufacture high quality products for a wide variety of purposes from Highways & Streetlighting and Outdoor Power & Leisure to Sports Facilities, Car Parks, Markets and many other purposes.



We are having a good start to the year. Emily Greenway, who has been a stalwart of our Sales Team for the last 2 ½ years has been rewarded with a promotion and has moved to the position of Operations Manager. She will now be overseeing the production and delivery schedule and materials purchasing amongst other tasks. We are very proud of her speedy progression within the company and we wish her every success in the British Powerlifting Championships in Scotland on 19th March, following on from her amazing medals achievement at the Europeans in December. We welcome to the Sales Team Naomi Anderson who is already helping our customers get the products they need.

Our last bit of great news is that we are also pleased to announce that we have now received our certification for Quality Management System ISO 9001:2015! So you can be assured that the service you receive is top notch and that we work to a consistent high quality that is matched only by the products we manufacture.

To get a quote for your latest project, please contact the Sales Team on: 0333 666 2122 or email: info@fisherandcompany.co.uk.

SUPPLIER OF HOISTS TO CONSTRUCTION & INDUSTRY

DIRECT HOIST

▲ HIRE ▲ SALES ▲ SERVICING ▲ PARTS ▲ REPAIRS

<p>GEDA 300 Z & Z/ZP (RACK & PINION)</p> <p>PAYLOAD Z - 300KG GOODS ZP - 300KG GOODS/3 PEOPLE MAX HEIGHT 50M SALE ✓ HIRE ✓</p>	<p>GEDA 500 Z/ZP (RACK & PINION)</p> <p>PAYLOAD Z - 500KG GOODS ZP - 850KG GOODS/5 PEOPLE MAX HEIGHT 100M SALE ✓ HIRE ✓</p>
--	---

01724 781647 ▲ 0113 819 9997 ▲ 0191 260 0543
DIRECTHOIST.CO.UK

APS

ADVANCED PERIMETER SYSTEMS

Perimeter security has never been more important whether at home or at work. Advanced Perimeter Systems range of perimeter security systems provide solutions for every security challenge.

Our solutions are quality assured, proven, reliable, robust and simple to install. Whatever challenges you face securing your property why not give us a call to discuss your needs we may be able to design a bespoke solution just for you.

Advanced Perimeter Systems has a reputation as a manufacturer and designer of high quality, high security, perimeter security solutions. We have a range of products available for installation to make any premises more secure from industrial, commercial to domestic property.

T: 01786 479862 | enquiries@apsuk.net
www.advancedperimetersystems.com

Switchable Glass and Film providing Privacy & Security Solutions across the UK

If you are looking for an innovative privacy product for your building, office, home or even front of store, then you need to get in touch with D365 to find out how we can help. Since 2016, we have been installing switchable smart film and supplying switchable smart glass to both the residential and commercial sectors. Our switchable film can be retrofitted to existing glazing and gives the client instant privacy at the touch of a button compared to traditional dusty unsightly blinds and curtains.

CASE STUDY: Bristol: A client had purchased a large meeting pod and had it placed in the middle of the walkway where privacy wasn't guaranteed. They then opted to use our smart film across the top half of the glass front for privacy and to keep data safe while also preventing distractions during meetings. The film used was our internal spec and is produced with a transparency of approx. 91% with low angle



haze or 'miliness.' All our work is bespoke and can be site measured where possible. Otherwise we can assist you to take measurements and happily advise the best solutions available for your glazing project.

ARRIVING SOON – REVERSE FUNCTION SWITCHABLE FILM
– EMAIL US FOR MORE INFORMATION

sales@display365.co.uk
www.display365.co.uk



SUNSHADE SERVICES LIMITED

- Thousands of Design Options Available
- Up to 100% Shade Cover & 100% UV Resistance
- Bumper Pads Fitted as Standard
- Designed, Manufactured & Fully Installed

Specialist all-weather outdoor structures & shelters

01782 398848 / 07807 063734

info@sunshadeservices.co.uk
www.sunshadeservices.co.uk

43" or 55" Ultra High Brightness LCD Double Sided Hanging Window Display

- 3,500cd/m² & 1,000cd/m² Double-Sided
- Freestanding Version
- Smart Temperature Control
- Integrated Android Media Player
- Plug and Play
- Network Upgrade
- 24/7 Commercial Use
- 3-Year Warranty
- Lifetime Tech Support

DISPLAY 365
sales@display365.co.uk
www.display365.co.uk

New small duct heating and cooling system set to tackle rising temperatures in UK homes

The Unico System

STAY WARM KEEP COOL

AND VENTILATE

A new small duct heating, cooling and ventilation system by US manufacturer Unico Systems has been launched in the UK.

The Unico System, which is installed in half a million homes and businesses throughout the US, provides heating, cooling and ventilation along with improved air quality and well-being.

The decision to make the Unico System more widely available to UK residents follows a series of record-breaking summers, as well as increasing demand for greater climate control.

The near silent, system, which operates at under 30 decibels, uses aspiration to deliver draft free heating and cooling ensuring temperature differentials are no greater than one degree throughout the home.

Richard Soper CBE, of Unico Systems UK, said, "The US is used to much larger variances in temperature, meaning that domestic ventilation and air conditioning is often installed as standard. As a result, the Unico system is fully adapted to the needs of domestic properties; providing effective climate control, but also operating at a barely audible sub-30 decibels. For self-builders and renovators this provides a unique opportunity to give occupiers the same level of climate control and comfort that they've come to expect in cars, hotels and gyms, no matter the season."

Contact
T 01384 422094
unico@bellplumbing.co.uk
www.unicosystem.co.uk

The Unico System

SLEEP EASY

Home Climate Control so you sleep easy tonight, and every night.

Unico can provide heating, ventilation and air conditioning within your home, all from one system.

A system that is fast and easy to install, giving you climate control in your home all year.

HEATING

VENTILATION

AIR CONDITIONING

For more information visit www.unicosystem.co.uk
or call one of our specialists on: 01384 422094

Traditional is the new modern – use of timber in modernist design

“We must recognise the importance of timber in overcoming our climate challenge,” David Warburton MP wrote to his fellow MPs recently. On paper, politicians are making the right noises having enshrined into law a commitment to reduce carbon emissions by 78% v 1990 levels. The MP for Somerton and Frome goes on to predict that we will move from a “20th century built environment comprising concrete and steel to a 21st century that lives in harmony with nature”.

So what will this look like? Would a timber window look right in a minimalist project, so beloved of modernist architects?

It could do, people are increasingly incorporating timber into contemporary designs, combining modern Passivhaus standards with sustainable carbon reducing materials. A great example is Hackbridge Passivhaus Plus Primary school which is described as a modernist log cabin. Using modern machined timbers that are sleek and modern unlike the rustic timber frames of the past. Engineered timber is much less likely to twist and warp meaning symmetry and form are easier to achieve than was the case with old timber buildings.

As timber window manufacturers, the increased use of timber in the built environment is heartening, but we still regularly face questions about the durability of timber windows and

doors. This is a hangover from the poorly made, cheap wood windows used in low cost housing of the 60s and 70s which gave timber a bad name, ably fuelled by the strong marketing messages of the uPVC market! In fact, modern engineered timber windows are scientifically proven to last 65 years or more with minimal maintenance if made to approved standards. However, there is a role that architects can play in ensuring they last way longer than this.

The modernist styles of buildings incorporating flush windows and flat roofs is far from ideal when it comes to protecting buildings in a four season temperate climate with wide variation in rainfall and temperature. Water ingress is responsible for a high percentage of claims against architects. The technology developed in modernist design would have impressed architects of the late 19th century, but they would be surprised at the abandonment of precedent in vernacular design and detailing gleaned over centuries of trial and error.

So, if a timber window company designed buildings, what would they specify? Stephen Wright, Chairman of George Barnsdale explains:

“Where possible, the simple answer is protecting the building from rain and harsh sunlight. From the foundations up, the act of displacing water away from the building helps to prevent damp, extends the life of windows



and modern breathable coatings, sitting them on stone would help preserve them even further and reduce maintenance. Of course, there are considerations around the sourcing of the right sustainable materials.

And doors?

In order to satisfy Part M of the building regulations (accessibility), there is a tendency to create a contradiction in the need for level thresholds and the demands of a sustainable future. There are details that can be used but many architects have a habitual cognitive bias against timber in favour of aluminium due to the outdated perceptions of timber. There are gains to be made environmentally by going for timber doors which are usually more competitively priced too. If tweaks to the design could be made like setting the door back from the edge of the building envelope it would make a difference to longevity.

Stephen Wright continues, “Building regulations requiring level access alongside high weather and thermal performance would require alterations to the basic laws of physics! Maybe it’s time to rethink this?”

and protects the walls of the building too. For instance, overhanging eaves are great for helping to control temperature inside the building as long as you can avoid cold bridging”

Whilst traditional details may be at odds with the clean lines of modern building projects, there are lots of ways of achieving the same result using contemporary architectural language and design elements. Peter Barber Architects have mastered the art of combining a British vernacular with the demands of contemporary architecture.

What about the positioning of the windows?

“Ideally, set the windows back in the reveal – this helps to protect them further from adverse weather. This doesn’t have to look traditional though. The Orsi Kaneh building in Iran is a great example of how a timber building can be optimised to deal with extreme weather whilst retaining a contemporary feel.”

“We would also try to set the windows on stone, tile or aluminium and avoid exposed cills – much of the damage that occurs to windows starts on the cills and in the bottom joints where water sits and eventually moves up the grain of the timber if they aren’t made correctly. Whilst modern engineered window incorporate precision joints, end grain sealing

Whilst there is no perfect solution to the climate crisis, as hosts of COP 26 this winter, we British really ought to be leading the way when it comes to the most sustainable building material available – timber. The creativity and vision that architects possess should enable them to overcome the connotations of ‘old fashioned, traditional timber designs’ to create modern, sleek, stylish and contemporary buildings that are also kind to the environment and more pleasant to live in.

Aimed at professionals working in the built environment, the event considers two sides of the conservation coin – balancing the environmental impact of inefficient historic properties with the need to protect the integrity of the building for future generations. Current planning laws try to incorporate ways to achieve net zero whilst, on the other hand hampering us in bringing old buildings up to modern, sustainable standards. The session will look at ways in which clever design and use of modern techniques can help architects and developers find a better.

Sign up for free here: www.georgebarnsdale.co.uk/cpd





STORAGE PROBLEMS?

We've heard it all.
Better yet, we've solved it all.

Get in touch with our Business Services team today to book your **FREE** consultation.

The trusted experts in space utilisation.



Scan me



BiGDUG

WWW.BIGDUG.CO.UK 0800 141 3380

Contour heating solutions



In 2003, after discovering the anti-microbial properties of silver, joint founder Leigh Simpson had an idea that would potentially relieve the growing problem of hospital acquired infections caused by antibiotic resistant bacteria. Leigh knew that if he used the same anti-microbial technology found in silver on the surface of low surface temperature radiator guards and LST radiators it could have the potential to not only create better hygiene in the healthcare market, but to save millions of pounds for the NHS every year.

After approaching BioCote®, a market leading antimicrobial technology supplier who at the time had recently developed a new powder coating which included silver and was proven to reduce bacteria by up to 99.9%, a long-standing relationship was born between them. Contour is currently the exclusive licensee of this technology for LST and anti-ligature radiators and guards in the UK.

Based in the West Midlands, Contour's services spread nationwide. Through its exclusive two main product lines: Low surface temperature and anti-ligature, Contour provides safe heating solutions for both the private and public sectors. "We provide a vast range of radiator guards, light switch covers and pipe boxing, essentially everything that can help protect people in environments such as hospitals, mental health units, schools, nurseries, care homes and more. The healthcare industry is a huge portion to what we do in providing safer heating solutions to NHS hospitals and trusts," stated Robin Mansell, Contour's Commercial Director.

As specialists in low surface temperature radiator technology, Contour design, manufacture and install an extensive range of innovative fabricated building solutions. This service is supported by Contour's passion and philosophy to always put the customer first, ensuring them that each product is made in Britain.



There are many unrivalled benefits to Contour's product range, all of which are applicable and relevant to a number of sectors. Robin mentioned some key notes, "We are the only radiator cover company that can fully lower the guard flat to the floor without the need to take the door off. Furthermore, we are also the only radiator cover manufacturer that can prove we reduce levels of bacteria on our covers by over 97%. Our anti-microbial partner BioCote® carry out regular testing of our coatings to ensure the process is still up to standard and is still effective."

One of Contour's notable new ranges is the new Covora Lite range. Manufactured in the UK Covora Lite is a cost-effective LST radiator suited for classrooms and student accommodation refurbishments. Available with BioCote® coating as standard for

complete antimicrobial protection and comes in over 200 sizes across single convector, double panel plus and double convector emitter models. Fitted with bullnose corners and half bullnose edges on the cover increases the products strength and reduces the risk of injury in the event of a fall against the cover.

The Covora Lite has a much faster lead time than other Contour products and is easy to use with an external TRV head for remote adjustment. The radiator cover is polyester powder coated to an average thickness of 60 microns internally and



externally and comes in RAL 9003 white as standard. The radiator cover is also supplied as a one-piece unit complete with prefabricated cut-outs for external valve heads.

The overall design is aesthetically pleasing and more robust than its predecessors from the strengthening ridges on the front of the cover. As the ventilation grilles are narrow, they are therefore easier to clean and maintain, stopping objects such as pencils and small items from being inserted through the grilles causing potential damage. Manufactured from 1.2mm Zintec steel, they are available in a wide range of RAL colours allowing them



to seamlessly blend into the design of any environment. The Covora Lite range is set to be extremely popular, combining the expertise and industry leading technology of both Contour and BioCote® for the most affordable safer heating solution. Contour is soon to begin marketing the new

range alongside its newly published 2022 product brochure containing over 100 pages of LST and anti-ligature products.

Offering complete versatility across a number of environments, Contour products can be installed across all sectors. With the recent effect of COVID-19 putting increasing pressure on the NHS and the entire healthcare sector, it has naturally caused people to consider hygiene in a different way. "All our radiator and guard products contain a technology called BioCote® in the coating. This technology combats harmful microbes



such as E. coli and MRSA. This became hugely beneficial to many customers during and following COVID-19," said Robin.

With many successful years behind it and many more ahead, Robin explained what further products are on the horizon, "As well as our new Covora Lite range, we are also launching a new range of free standing and bench radiators which are suited to office buildings and can even be used in more of a domestic setting. We will continue using our innovative technology to create and add new heating products to our portfolio, and as demand grows, we plan to also build our sales team to better serve our customers."

Contact
T 01952 290498
sales@contourheating.co.uk
www.contourheating.co.uk

