

Building & Construction Review



Commit to lay with TuffStuff® flexible GRP



In this issue of Building and Construction Review, we are pleased to announce that we have selected Tuff Waterproofing's TuffStuff® flexible GRP as the recipient of our Product of the Month award.

Transform your roof waterproofing capabilities with the new TuffStuff® flexible GRP from Tuff Waterproofing, the UK's premium designer, and supplier of heavy-duty GRP waterproof flat roofing systems.

Through the combination of its team of experts, and extensive research and development, Tuff Waterproofing is pleased to announce the launch of their innovative flexible GRP, that is the latest product in its GRP range.

Engineered for trade, the ingenious and inspired new product is both versatile and durable and something that has never been done before. With a team of experts that have been in the industry for over 30 years, Tuff Waterproofing is more than familiar in delivering outstanding GRP products consisting of waterproofing liquid solutions for flat roofs which are comprised for GRP, flexible GRP and Polyurethane products.

After thorough testing, TuffStuff® flexible GRP was launched last year and has since received incredible interest from builders' merchants and roofing centres all over the UK. Unlike previous products such as Tuff Tech Pro®, which is a polyurethane system, the TuffStuff® flexible GRP is a flexible GRP meaning it can be applied to multiple surfaces. This is a unique development in the GRP market. For prospective clients needing to save time and money by overlaying a roof rather than stripping back and replacing, its multi substrate compatibility means it can be applied directly to felt, asphalt, single-ply, GRP, concrete, timber, or metal.

With normal GRP's you will need to also apply a base and a topcoat, whereas TuffStuff® flexible GRP is one resin system that forms a highly flexible, extra tough, and seamless waterproof membrane, making it the perfect solution for flat roofs and areas of heavy-duty

foot traffic. The use of a granulated catalyst rather than liquid allows for a safer and easier product use.

It's very important to note that even though the product is moisture resistant while curing, it cannot be applied straight onto a wet surface. If a heavy rain shower were to fall in the middle of a job, TuffStuff® flexible GRP allows you to go away and resume work on the remaining roof area once the rain has stopped. After removing excess liquid and applying a gentle wipe with acetone, work can resume easily with no compromise to the quality or end product, making it impervious to rain and much more time efficient.

The product requires only two coats, both of which can be applied within 60 minutes, and a 225gsm reinforcing mat. Another significant benefit to the product is that it can easily be applied to vertical sections of a roof without the concern of sagging, and once laid and whilst curing, the product is completely showerproof.



As one of the UK's leading suppliers of heavy-duty, waterproof flat roofing, Tuff Waterproofing took the opportunity to launch its new product on a global stage at the UK Construction Week 2021 show (UKCW), where it was awarded the Best Shell Scheme stand. TuffStuff® flexible GRP received extremely positive feedback from visitors who expressed their appreciation for its advantages of being offered as a one-pot solution. Its recent product is the latest addition to its wide range of GRP products that uses the latest liquid polyester resins, glass fibre mat reinforcement and flexible edge trims to create a fully integrated 100% waterproof seamless finish.



Tuff Waterproofing has a busy year ahead in the event calendar as it will also be showcasing at UKCW London: 3-5 May 2022 and UKCW Birmingham: 4-6 October 2022. Furthermore, TuffStuff® flexible GRP is also now available to purchase from the following Builders' Merchants: Buildbase, Huws Gray, Jewson and numerous independents.

In closing, we spoke with Greg Gimenez, Tuff Waterproofing's Managing Director on how he felt the product has been received across the industry and how the company plans to continue its success into the future. "Our product is the most innovative, unique and proven solution we have produced to date. Our hard-working, extremely knowledgeable product development team has worked closely with our customers and our UK-based manufacturing facility to produce an ever-evolving product range.

The TuffStuff® flexible GRP speaks for itself and is a credit to all the hours of research and development that has gone into it. Our mission statement for the future remains the same, to continue to improve our product range year after year. We see TuffStuff® flexible GRP as the future of GRP roofing, and in time we plan to develop its environmentally friendly credentials to reach higher economic standards."

For more information, see below.

T 01977 680250
orders@tuffwaterproofing.co.uk
www.tuffwaterproofing.co.uk



DCON Safety
See on page **02**



Carlisle CM Europe
See on page **03**



Rapid Access Ltd
See on page **04**



Bona
See on page **05**



Shire
See on page **07**



Davison Forklift Ltd
See on page **15**



Collaboration and partnerships key to DCON's award-winning safety excellence

In this issue of Building and Construction Review we have selected DCON Safety Consultants Limited as the recipient of our New Year Spotlight Award.

After 5 years in business, DCON Safety Consultants again came to forefront in successfully claiming another major industry award. The company returned to the winner's podium recently by receiving the prestigious Guinness Excellence in Business Award for 2022 having already claimed the matching award for 2021. Founder and Managing Director, Diarmuid Condon instantly deflects praise to his Clients and industry partners.

If the current trend continues, then as one of Ireland's foremost independently owned built environmental, safety, health and wellbeing consultant practices, DCON Safety Consultants may soon have to consider rearranging their Dublin city office space to make room for all the industry awards they are securing. The 2021 calendar year ended on a high note for the company as they were once more recognised at the prestigious Guinness Excellence in Business Awards – a feat which Diarmuid Condon modestly admits would not have been possible without the invaluable input of an extensive network of partners:

"We were surprise winners of this award last year and we welcomed winning it again this time around – it acknowledges our strong commitment to the services we provide," Diarmuid notes. "We are humbled to have been chosen as the 2022 winners but the reality simply is that we wouldn't have received this award without our Clients, their Design Teams & Project Managers, our



Consultant Partners that we work closely with on a day to day basis prioritising health, safety and wellbeing. It's imperative that we acknowledge all project parties, as it's ultimately a collaborative effort."

Diarmuid goes on to further remark "We can only use the tools that we are given; these are informed by our Clients' commitment, behaviour and efforts. This single point of success enables us to be considered for any award, never mind win one. We advise and offer guidance on design, planning, procurement, construction and operational outcomes. Outcomes are only attained with buy-in from our Clients. This relationship and rapport extends to our delivery partners – i.e., Main Contractors – who also have to be highly commended. Our service pool is extensive and it is important to acknowledge everybody involved.

Their contribution and hard work allows us to continue with our principal service offering and to extend and expand upon it. Our Clients have been very much affected by the pandemic and have had to significantly alter their site practices and manage the challenges presented. This has impacted upon their resources and involves incurring additional costs but – even under these more demanding circumstances, with working conditions and site lay-outs significantly altered – they continue to deliver safety and to eliminate risk. These are the real winners of this award. We could not collect or promote this award without our Partners."

Proven leaders in built environmental, health & safety and wellbeing consultancy matters - consulting on various aspects of project design, constructability and operational lifecycle matters for local and global multisector clients, DCON Safety Consultants prioritise and specialise in the highest levels of informed and intelligent advice, senior project resource allocation and compliance assurance. Acutely cognisant of the fact that every project with potential benefits also has potential risks – and with the art of planning centring on the coordination of these two zones of uncertainty - their team of highly-experienced construction professionals consistently prioritises and safeguards each client's best interest and statutory conformity.

The skills, knowledge and experience of DCON's staff places them at the forefront of their profession; their unique approach to the services provided is focused heavily on assisting Clients demonstrate confidence in



their levels of compliance whilst also exploring how they might improve their safety performance.

With the safety and wellbeing of their own people, their clients' staff and those around them is at the heart of the business, DCON Safety Consultants are passionate and highly committed to continually improving health, safety and wellbeing management in collaboration with Clients. They have accumulated extensive experience in the provision of specific health and safety advisory services on large, complex projects and public and private developments.

DCON Safety Consultants serve a wide and varied selection of customers including Public Sector Departments, Corporate Owners, Real Estate Developers, Main Contractors, Design Professionals and Infrastructural Bodies. No project is considered too simple or complex for their team of high-quality specialist consultants - construction professionals averaging 20+ years' experience working in the built environment.

While collecting awards obviously should not rank high on any practice's list of priorities, it is nevertheless true that it provides businesses with some additional positive press, which is always welcome. Indeed, when DCON Safety Consultants struck gold at the most-recent staging of the Guinness Excellence in Business Awards, Diarmuid noticed that his LinkedIn profile attracted no fewer than 26,250 views inside a week!

"It's recognition of what you do and how well you are doing it, and it's also free marketing, but at the same time there is also a consequence to winning an award



in that you must maintain your high standards thereafter and be even better going forward," the personable Cavan resident concedes. "While you can draw a line in the sand each time you win an award, you have been placed on a pedestal from which you can be knocked down – and I don't particularly want to be knocked down from it. I prefer to move upwards. Our modus operandi is to excel at what we are good at and to never over promise and fail."

Diarmuid also had the honour of sponsoring and presenting a major industry award on the night of Wednesday, November 24th 2021 when Ardmac were the winners of the DCON Safety Consultants-sponsored 'Excellence in Safety Award' at the annual Fit Out Awards



2021 ceremony at the Clayton Hotel. "After the year-and-a-half we'd all had, it was nice to have a reason to get dressed up and attend the function, which was very well organised in terms of prioritising public health," he reflects. "These events are easy wins. It creates visibility and awareness for those we haven't worked with and for whom we could be a good fit to promote and provide safety advice."

Principal services provided by DCON Safety Consultants includes that of a Project Supervisor for the Design Process (CDM Advisor Plus), Pre-Planning Compliance, Safe Design Adherence, Health & Safety Strategy Creation, Client Advisory Roles, Physical Site Safety Auditing and Expert Witness. Through these services, they support and influence the design of proven health, safety and wellbeing strategies that seek to help clients achieve high-quality, cost-effective work for the safe design, construction and operation of their assets.

"While we spend a lot of time being good at what we specialise in, the reality is that we simply couldn't do it without our Clients, Design Team Partners and Project



Management relationships," Diarmuid reiterates. "We strongly acknowledge their support and realise that we would not be where we are today without them. Winning the Excellence in Business Award 2021 and 2022 is a nice accomplishment but you cannot look at any award receipt in isolation. You need to examine how you got it and that's generally through quality of service, which is made possible by the support of all those people and companies you are collaborating with."

While Diarmuid's track record in designing and executing strategic safety plans and systems for construction projects in Ireland and the UK is exceptional, his comprehensive background as a construction professional has been key to taking DCON Safety Consultants to where they are today. "We are construction-qualified specialists, and we are there when it is difficult, not just when it is easy," he promises. "We understand both safety design and the mechanics of construction methodology. Our primary qualifications is in construction and that is hugely important.

"While we provide safety services, you also need to understand how things get constructed and deconstructed. There's value in that and it is earned. We understand that value and we are always open to learning and strive to excel in new technologies, be that lean construction, alternative design lay-outs or BIM developments. On each project, you have to consider whether that technology suits the Irish market and the client. We're fully committed to consistently learning and to acquiring the understanding which enables us to have that conversation at the right level with influencers and decision-makers across design teams."

At any given time, the experts at DCON Safety Consultants are active on a variety of bespoke projects for a wide range of clients across the city centre and beyond. Some ongoing projects at the time of writing include the Cherrywood Town Centre Development, Camden Yard Development (former Kevin Street DIT campus), Project Calvary Dublin 3, 2 Grand Parade Dublin 6 and various regeneration masterplan projects.

With the Guinness Excellence in Business Award proudly on display – symbolising DCON Safety Consultant's strong relations with their Clients, Design Team partners and Project Management teams – this progressive safety consultancy practice seeks to go into the new year with a decided spring in its collective step:

"It is deeply humbling but at the same time I wouldn't have accepted the award if I felt we didn't deserve it," Diarmuid concludes. "This is a moment in time, and it doesn't define us. It alludes to our performance within a particular timeframe, but we intend to continue

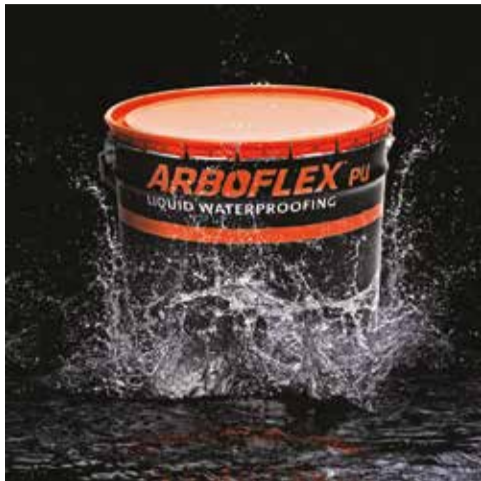


delivering for our Clients and hopefully that may lead to us to be considered for other similar like awards in the near future."

T +353 1 611 1556
diarmuid.condon@dconsafety.com
www.dconsafety.com



Waterproofing you can rely on



Carlisle CM Europe (CCM Europe) manufacture high quality EPDM waterproofing membranes for flat roofing, façade systems and building solutions for the construction industry.

CCM Europe is a dynamic company with ease of installation and durable roofing systems including EPDM & Liquid Waterproofing. As a leading manufacturer of waterproofing membranes and sealants,

refurbishment and new build projects. The market leading advantages of Resitrix® lie in the unique combination of materials: the synthetic rubber EPDM and polymer-modified bitumen - making it a durable hybrid membrane. Our extremely flexible, single-layer waterproofing membrane can thus be applied on almost all substrates.

The membranes are welded together quickly, easily and safely using a hot-air device without any need for naked flames," stated Shail Chauhan, Marketing Manager.



and waterproof on a range of substrates. Alongside its high performance and wear-resistant membrane, ARBOFLEX® PU can adapt to any surface: uneven, curved or irregular, and with its fast-curing properties can be walked on in 24 hours. Comprised of one component that can be applied straight out of the tin, it allows for fast and easy installation, is green roof compatible and weather resistant, so it can be used all-year round.



our market leading products are suited for a wide range of flat roof substrates for both new build and refurb.

CCM Europe has proven EPDM membranes, accessories and flat roofing solutions for roofers, architects, contractors, and distributors. The company's product portfolio consists of many market leading brands such as Resitrix®, Hertalan®, Alutrix®, ARBO®, ARBOFLEX® PU, and "Resitrix" which is BBA certified and award-winning hybrid EPDM membrane that offers customers reliable waterproofing in both

As a dedicated sealant manufacture, CCM Europe is able to supply products that meet any requirement. Its ARBO® brand sealants are designed for the professional and is a well-respected product range throughout the building, glazing, construction, and architectural industries.

One particular product worth noting is the ARBOFLEX® PU, a single component liquid made from pure polyurethane which, once cured, forms a seamless elastic membrane without any joints. The material properties of ARBOFLEX® PU enable it to be air tight

"ARBOFLEX® PU Liquid is the newest product to our portfolio that is very easy to apply and looks sleek in its finishing format," said Shail. The ARBOFLEX® PU is part of the ARBOFLEX® product range that consists of ARBOFLEX® PU UV PROTECT, ARBOFLEX® PU THICKENER, ARBOFLEX® MATT, ARBOFLEX® PU ACCELERATOR, AND ARBOFLEX® PU SEALANT. ARBOFLEX® PU is BBA certified and available in 6kg and 20kg tins.

CCM Europe is not only dedicated to offering state of the art EPDM flat roofing

seal solutions, but to also extend its expertise and knowledge to other professionals through its dedicated EPDM and PU Liquid system roofing training courses at the CARLISLE® ACADEMY. Designed by professionals for professionals, with a view that knowledge is sustainable material. The more you share it, the more you get back. The training content is intended to enable attendees to learn of the proven advantages of EPDM water-proofing solutions relating to roofs, façades and building in an up-close and hands-on manner. For more information, visit www.academy.ccm-europe.com

Allowing for change creates space for continuous growth and a new perspective. Shail commented some recent changes to the company: "We have recently strengthened our sales and distribution network covering the UK and the ROI market. We have also welcomed a few new members to our sales team, Charlie Patrick and Crawford McAllister. Charlie looks after our Eastern region and Crawford looks after the North and Scotland. Both have had previous experience in the roofing sector and are amazing additions to our team."

With ambitions to continue their impressive growth, CCM Europe plans to keep collating together more opportunities for further development. As a dynamic company that aims to support and motivate its people as much as possible, it is continuing to review and develop new products all the time.



For trade & sales enquiries contact us on:
T 01623 627285
info.uk@ccm-europe.com
www.ccm-europe.com

The fastest access panel in the world, available now!

rapidFit



Rapid Access Ltd was founded in 2008 and is located in the Midlands with two manufacturing facilities in Nuneaton and a warehouse in Atherstone. Over the past 25 years, Rapid Access Ltd has provided a high-quality service in a wide range of access panels, riser doors, loft hatches and fire rated over boxes in various sizes and specifications.

Designing and manufacturing access panels for walls and ceilings, Rapid Access Ltd offer the quickest manufacturing process on the market when it comes to ordering their products. As specialist manufacturers for the construction and building sector, it also extends its unrivalled service to distributors, contractors and architects.



"Our Flipfix Range of Access Panels are five times quicker to fit compared to a traditional panel, with our unique Fitting Device, Mitreless Frame and new Flush Lock system, these panels save 80% on fitting costs as there are no screws or glue required and no need for bracing or supports just cut, fit and flip," said Kate

With four options available, the FlipFix

comes as plasterboard, metal faced, tile faced, or circular. Further benefits including easy to fit, extra lock options, perfect for walls and ceilings, comes with an approved fire rating and no extra materials are needed. The Flipfix allows easy access to hidden domestic services such as shut-off valves, isolation switches, stop taps and other hidden services. The Flipfix is manufactured to an excellent finish.

Kate explained another notable product, "we are also the innovators of the RapidFit hinge system on our riser door range which works on a spring-loaded pin hinge. This means, the installation of the door, once the frame has been installed, is much quicker than a door supplied with a traditional piano hinge."

The RapidFit sliding hinge system allows for quick and easy removal of the access panel door from the frame. Therefore, allowing the frame to be fitted into the structural opening easily and safely. By aligning the hinge pins and clicking them into place, the access panel door can then be fitted. The product has undergone vigorous testing and can save up to 30 minutes per panel on fitting times when compared with an 1800 x 600mm Rapid Fit and a traditional access panel.

Holding accreditations in ISO 9001:2015 Quality Management and UKAS Management Systems, its customer service is impeccable. On hand to assist in any queries, the team aim to respond within an hour and process any order



during the enquiry. Working alongside customer service is the technical support team who are a team holding large amounts of experience and technical know-how of all things access panel related. Furthermore, if you require guidance with your order, the website has an access buddy live chat where you can chat with any member of the sales team instantly.



Rapid Access Ltd offer customers large quote support with each quote over £5,000. Offering a pack consisting of a quote summary, datasheets, test certification, product/service benefits and features, fitting instructions and a history of the quote. Additionally, customers are provided with a detailed product brochure including price and product information and guidance. If a customer is unsure of what they're looking for, Rapid Access Ltd has an access panel builder on the website consisting of expert sales team members to help customers select the correct panel.

Its latest innovation is the Meter Over Box which is designed to be surface mounted onto a structural membrane of a block wall system. Manufactured with a 25mm wide picture frame, the panel comes with a metal faced door.

The panel door leaf is locked in place via a budget lock and an 8mm triangular meter cabinet insert, other lock options are available. The panel is powder coated RAL 9010 30% gloss and is available in multiple colours. The panel is 2-hour fire rated for an integrity up to 1070 x 650mm in a wall application and is tested in accordance with BSEN 1634-1.

"We have recently released our Rapids Flush Lock system, which incorporates a sleek discreet finish and is available on most of our Flipfix products. Customers will never have to worry about losing or breaking bungs again as it has a spring-loaded locking mechanism," stated Kate.

Further to its product portfolio, the company has a BIM library which acts as a link between manufacturers and BIM. It develops digital replicas in 2D and 3D

libraries of real-world building products and interior components. With this technology the company can offer a digital 3D replica of its products.

Kate explained what impact COVID-19 has had on the business, "we felt the impact of material prices rising but as a manufacturer we decided not to implement a price rise during these testing times. Instead, we decided to add a temporary material surcharge, meaning as long as the price of materials come down, so will our surcharge."

In the future, the company aims to have all its products in National distributors with the ease of purchasing its unique Flipfix product, loft hatches and riser doors, and will continue its efforts to incorporate its products into nationwide industry specific projects.

For more information, see below.

T 024 76328811
sales@rapidaccessltd.com
www.rapidaccessltd.com



bimobject

Innovative and sustainable solutions to every wooden floor challenge



Founded in 1919, Bona was the first in the industry to offer a full system of Waterbone hardwood floor finishing and floor care products. As a family-owned company, Bona is a sustainably driven company that provides products for installing, renovating, maintaining, and restoring premium floors. Offering products for the most premium of floor surfaces including wood, tile, vinyl, resilient, rubber and laminate, Bona has engineered, pioneered and perfected an entire system to create floors that last a lifetime.

Bona's founder, Wilhelm Edner is from Sweden and used to sell a product called Bonvax from his small grocery store. When applied to wood, Bonvax creates a polished and protective surface. After realising the products potential, Wilhelm founded Bona AB with a focus of bringing out the beauty in floors.

Today Bona has over 600 employees, spread across five factories around the world and is present in 90 countries through 17 international subsidiaries and distributors. Still headquartered in Malmö, Sweden, its UK office is based in Linford Wood, Milton Keynes.

Bona carries 100 years of experience and expertise in the flooring industry and offers customers a unique insight into flooring requirements and solutions. Providing solutions for all levels of flooring from commercial installations, renovations, floorcare products, coatings, fastenings, machines, abrasives and ongoing maintenance. From its commitment to

sustainability to its relationships with its customers, Bona provide an unrivalled service that gives customers the highest quality products.

Sustainability is at the core of Bona and has been embedded into the company's culture since 1919. "What we've learned from 100 years of commitment to sustainable practices is that sustainability is ever-evolving. Rather than a destination, it's a multifaceted journey that changes as our world changes. Our sustainability journey is aligned and in accordance with the United Nations' Sustainable Development Goals



and is focused on bringing better products and practices to home, health, and humanity - across the globe," stated Leanne Garvie, Marketing Manager.

Renewable raw materials were introduced with the first generation of Bona Mega in 1995. Bona source all its own raw materials to ensure the chemical composition of its products meet the strictest standards. Bona provides the highest quality design, craft and care in all its products and prides itself on its environmentally friendly profile. For example, Waterborne finishes were invented by Bona for wooden floors and offers a safer way to refinish floors improving working conditions for flooring contractors by reducing their exposure to solvents.

The SHE (Safety, Health and the Environment) policy showcases Bona's commitment to sustainability, and the company is proud to state that all of its manufacturing is certified by ISO 14001, GREENGUARD and Green Seal.

At Bona, a commitment to humankind means more than 'just giving back'. Bona like to think of it as 'giving forward', therefore, Bona has committed to a future of supporting both global and local communities. From international partnerships that support global change to donating time and resources to local fundraisers, Bona has made tremendous efforts to make a difference in the world. From partnering with Hand in Hand, a non-government organisation, to helping fight poverty, raising funds for local hospitals and working alongside university research programs, Bona deliver an abundance of services and outreach programmes to enrich the lives of those in need.

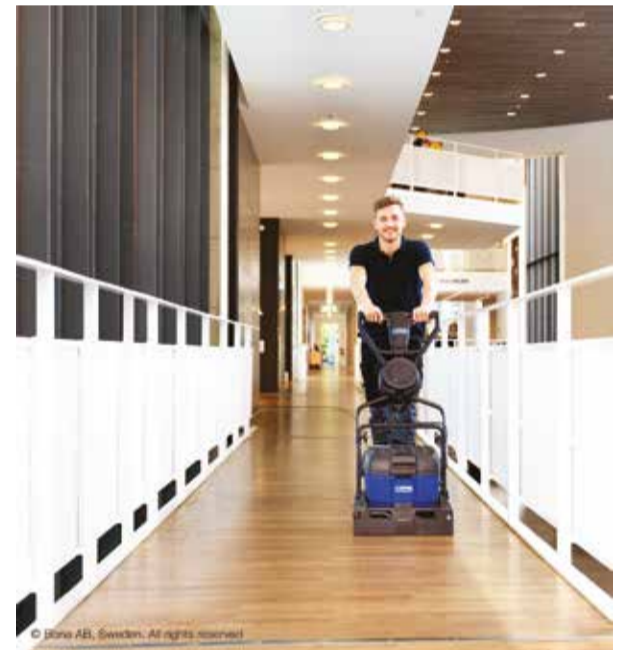


In recent news, "Bona now offers highly effective treatment steps and products for the renovation and maintenance of resilient floors. Our high quality, sustainable program allows you, to not only maintain floor freshness but also to totally transform the look of your existing floor without replacing it," said Leanne.

The Bona system comes with a complete range of high performing products designed

to deliver durable and beautiful results. Its proven, trusted system of products offers a wide range of choice from coatings, adhesives, finishes, maintenance, machines, abrasives, tools and accessories. The resilient solution is proven to deliver a cost savings of over 40% with 50% less downtime. Ideal for heavy traffic in commercial and industrial settings, the system harks real sustainable benefits and is proven to save over 90% towards both energy output and reduced carbon footprint.

Bona's recent success has enabled a move into a new premises to cater to recent demand. The new premises houses an expansion of its warehouse facilities and is helping to increase its distribution capabilities. Bona products are targeted towards commercial property managers,



facility managers, contractors, architects and even domestic floor owners. Its multifaceted capabilities allow Bona to adapt and be flexible to any customer's requirement regardless of what industry they serve. In closing, Leanne relayed what Bona envisages for the future, "we want to take the Bona brand to the resilient flooring renovation market. As market leaders in the wood floor sector we are keen to expand awareness to other floor types and facility solutions."

For more information, see below.

T 01908 525150
info.uk@bona.com
www.bona.com/en-gb



The Environmental Assessment Specialists



We are pleased to announce that ACCON UK has received Building and Construction Reviews Commitment to Excellence Award.

Founded in 2007 by Graham Parry and ACCON GmbH, ACCON UK is one of the UK's leading niche environmental consultancies, specialising in air quality, noise, vibration, lighting, flood risk environmental assessment, odour, contaminated land, and Environmental Impact Assessment (EIA).

"We are an Environmental Consultancy committed to serving our clients with the highest standards of consultancy advice with our services variously provided for new development proposals and also as part of nuisance investigations. We provide specialist environmental technical studies which assist developers in obtaining planning permission and we also provide specialist review services to local authorities," stated Graham.



the highest level of service to a range of sectors including housing, commercial, retail, leisure, industrial, mining and quarrying, petro-chemical, energy and wind farm developments. And within these sectors, ACCON has the capabilities and specialist expertise to serve clients who work in major

"Our services are fully integrated across each team and the main offices, ensuring that a holistic approach to environmental assessment is provided. From developers and architects to town planners and local authorities, we work with many industry professionals. Our services aim to provide clients with exceptional value for money, bringing to bear 50 years' experience across all environmental topics and a very good understanding of EIA," mentioned Graham.

ACCON UK is able to complete every aspect of EIA including screening requests, scoping and methodology and the preparation of the EIA and Non-Technical Summary (NTS). Keeping the client as its number one priority, the EIA can be completed by either ACCON UK's in-house team of technical experts, or by using the client's external technical specialists.

The company's dedicated EIA manager has a wide range of experience that is vital given the level of scrutiny that EIAs face during the planning process. Clients can rest assured the process will be as smooth as possible, and that ACCON UK



will work hard to avoid the need for EIA altogether if at all possible throughout the planning process.

In closing we asked Graham what the company's plans were for the future, he answered, "since COVID-19, measures for home working were put in place, and those measures have continued alongside our normal office working. We have an ambitious expansion plan programmed to cement our position as a small but niche environment consultancy. We are excited for the future!"

For more information, see below.

T 0118 971 0000 (Reading Office)
T 01273 573 814 (Brighton Office)
enquiry@accon-uk.com
www.accon-uk.com



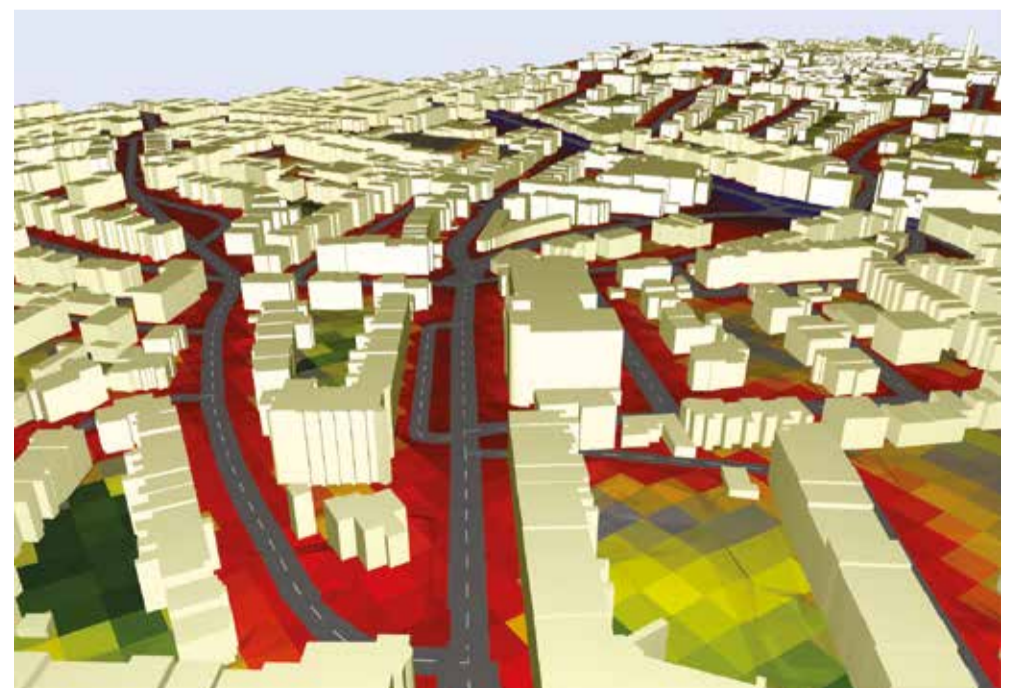
infrastructure projects, transportation – road and rail, residential and commercial development, sports stadiums and recreational facilities.

At ACCON UK, a commitment to excellence means much more than just ticking the right boxes.

Located in Reading and Brighton, ACCON UK offers focussed solutions for its clients supported by its team of specialist technical assessment consultants who are trained to provide the most up to date service that includes knowledge of the most relevant and latest revisions to the planning system.

ACCON UK prides itself on producing

ACCON UK is accredited and registered with ISO9001, RISQS, ANC, SMAS as recognised by AAIP, and is a member of Constructionline. ACCON's entire approach combines the unity of the expertise and experience from each member of staff to ensure the delivery of its service to its clients is exceeded above expectations and remains within the guidelines of its accreditations.



Shire strengthens service offering with ground improvement technique



Let's take a look at Shire where innovation and product development has turned them into one of the country's most unique construction companies.

Innovation

Innovation is the key to Shire's success, says group Managing Director Simon Crook. They now have nine patents within the group with one more "pending". He expects their latest service, resin injection, to build on the success of their other products and help drive the company's expansion over the next few years. If you have weak ground or sunken slabs, resin injection can save time, money and disruption. Specially developed geotechnical polymers are injected into the ground at high pressure where they expand, compacting the soil and lifting structures back to level. This is a very exciting development, allowing us to improve the support to structures with minimal disruption, says Simon.

The Beginning

The Civil and Structural Engineering department at Shire was formed in 1988 to provide a more proactive and innovative response to that offered by many traditional engineering practices. Early projects included a cable suspended footbridge and the computer analysis of the roof structure to halls at the NEC.

Shire has been recognized with awards for both design and innovation. Awards for building design include the 2010 RIBA Architecture Award for the



Zero Carbon House in Birmingham, the 2013 RIBA West Midlands Award for the Michael Baker Boathouse, King's School, 2013 RIBA North East Award for Yarm School Auditorium and the 2013 RIBA West Midlands Award for St George's Primary School.

A specialist telecommunication infrastructure team to service the booming telecommunication market was the next addition to Shire. As well as working for all the major operators in the UK, Shire helped design EE's networks in Switzerland and Sweden. Shire also had the honour of being appointed to design the telecommunications hub for the City of London stadium at the 2012 Olympics.

Shire established their own in-house geotechnical division in 1997. Initially this team only provided services for Shire's consulting and telecommunication teams. The geotechnical team quickly expanded, however, and now provide support to other consultants, building insurers, local authorities and housing associations. The services offered include soil strength assessments, ground contamination analysis, subsidence investigations, tree root analysis, drainage surveys and soakaway testing.

Product Development

In 2004 Shire were approached by Halifax Insurance to develop a small pile that could be installed with handheld equipment to help remedy subsidence of domestic property. A steel helical pile, a method of installation and a completely new design procedure were all established with Halifax Insurance, estimating the product saves building insurers up to £3 million a year. The Shire pile is patent protected and was shortlisted for the prestigious Ground Engineering Innovation award.

In 2007 Shire developed the QuickBase Foundation System. This was a revolutionary new foundation partly built using recycled plastic. Prefabricated

components can be carried through or around a property and allow foundations to be built quickly and accurately. The QuickBase product won a gold award from the Fenestration Industry and also won Best Exterior Product at the Interbuild Show. QuickBase has featured in a number of episodes of the tv series DIY SOS where it received praise when the full foundation and ground floor for a building extension was completed in less than a day.

A patent has just been granted for the Shire RootBase. This is a concrete free foundation that can be installed using hand-held equipment, without the need for the specialist skills necessary to install piles. RootBase was selected for a school extension in Bolton as it gave both cost and time savings compared with traditional construction. It was recently shortlisted for a Big Think Innovation Award at Futurebuild.

Subsidence Services

Because of Shire's Engineering expertise and product development, they were asked by a number of UK insurers to help with the structural support of subsidence damaged property. They were the first company to offer insurers the combined service of inspection, investigation, reporting and repair. This minimises the disruption to homeowners and saves insurers both time and money. Shire developed a reputation in the insurance industry for high quality work and the ability to "think outside the box". In 2010 they were presented with the Lloyds Banking Group Supplier of the Year Award.

The new resin injection service

Resin injection can be used to fill voids, compact soils and lift slabs/structures back to level. Although not suitable for all soil types where the ground is suitable the results can be "spectacular", says Simon Crook. On a recent project floor slabs had settled by up to 20mm due to a bed of loose hardcore below the slab. Resins were injected into this, filling the voids and the expansion of the resins lifted the floor back to level. All work was completed in less than a day.



The Housing Association client was amazed at the speed of the work and confirmed that it had saved them thousands of pounds.

In another project, a building had been constructed on very loose granular material resulting in a slow settlement of the structure. Cracks were typically around 3-4mm in width and had been forming slowly throughout the life of the building. Resin was injected below the level of the foundation to consolidate and strengthen the soil, preventing further settlement taking place. A second injection was then undertaken below the foundation to lift the structure back to level and close the building cracks.

There are many causes of building movement, says Ron Mace Shire Technical Director and current chairman of the Subsidence Forum, and it's not surprising therefore that there is not one remediation solution that is best for all types of subsidence. This is where our technical expertise and the range of solutions offered by Shire wins over our competitors, says Ron. We can evaluate a problem and specify the most appropriate remediation scheme, this could be micro piling, conventional piling, traditional underpinning, root trench or resin injection. Some projects may need more than one solution and the last two complex remediation schemes evaluated by Shire included both piling and resin injection.

If you would like to find out any more information, please see below.

T +44 (0)1527 579933
www.shire-uk.com



The only joinery manufacturer you need

If you're looking for quality, custom-made joinery, look no further than Bluerun Ltd. As a small, family-owned joinery manufacturer, Bluerun boasts an extremely loyal team of experts who manufacture everything to the highest quality.

Bluerun's staircases are widely considered works of art, all of which are designed in-house. On top of this, Bluerun can create bespoke items, from bookcases and window frames to countertops and door sets.

Whether you need a one-off item or a production run of doors and windows for a housing development, a new interior for your premises or a bespoke shop

front, Bluerun is perfectly placed to deliver exactly what you need. Instead of producing speculative items for stock, Bluerun only produces purpose made joinery to fit clients' drawings and specifications.

The majority of Bluerun's production is for commercial builders and manufacturing, and it can provide all types of commercial joinery products. In addition to commercial projects, Bluerun can also produce high quality joinery to meet the specific standards of conservation areas or heritage sites.

This includes shopfronts in sensitive conservation areas, and a 10-metre-high oak hardwood catapult

for Stansted Mountfitchet Castle.

With such a wide scope of services and the skills and expertise to support them, Bluerun is the only quality joinery manufacturer you need for your project.

For any more information, please see the details below.

T 01799 599995
dee@bluerunltd.co.uk
www.facebook.com/bluerunltd
www.instagram.com/bluerun_joinery
www.linkedin.com/company/bluerun-ltd



SAF Woodland Management

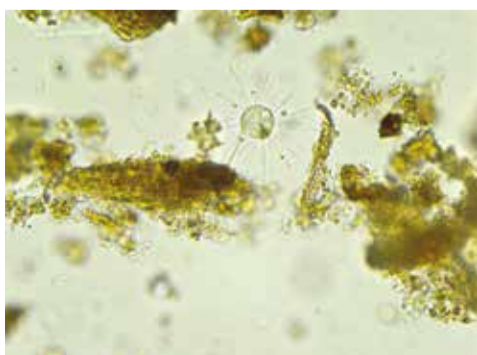


In the 1960s Maureen Iddon was a pioneer of the post war era. Her decision to start a plant nursery, earned her a reputation in growing and breeding rare herbaceous plants that spanned more than 30 years, including exhibiting at national Royal Agricultural and Horticultural Flower Shows. Observing plants, nature and creating a healthy growing stock has been the bedrock of the family business across three generations.

Grandson Daniel Iddon switched the family nursery to trees in 2019. Growing healthy plants is essential, but the challenge is whether we can grow trees to also suit their planting environment. This challenge drove Daniel to relocate his nursery operations to his woodland in Pembrokeshire. Planting trees from the growing trials in his woodland, he noticed how the trees were changing outside of the carefully controlled environment (soil moisture, air humidity, chemical food source), adjusting to the new climate local to the woodland with an abundance of bacteria, fungal species and microbes in the soil.

During growing trials to support the SAF Woodland investment in the Ellepot growing system, opportunities for improvement in the growing medium was identified. SAF Woodland are now developing a living soil to bring the woodland environment into the nursery. The research is being funded by The Forestry Commission Tree Production Innovation Fund (TPIF) in 2021 that has been designed to encourage the development and adoption of new technologies and ways of working that will enhance the quantity, quality and diversity of tree planting stock available for planting in England. By 2025, the government is seeking to dramatically increase tree planting to 10,000 hectares per year in England. To meet these planting targets domestically will require a corresponding increase in the UK production of tree planting material.

T 01239 611980
info@safwoodland.management
www.safwoodland.management





Bluerun Limited

quality bespoke joinery since 1991

Quality, custom made joinery

Whether you're looking for a one-off custom made gate or a production run of doors and windows for a new housing development, perhaps a new interior for your pub, restaurant or office, we can deliver exactly what you're looking for.



Contact us to discuss your requirements

☎ 01799 599995
✉ dee@bluerunltd.co.uk
🌐 www.bluerunltd.co.uk
f [bluerunltd](https://www.facebook.com/bluerunltd)
📷 [bluerun_joinery](https://www.instagram.com/bluerun_joinery)



UAB VIEŠVĖ

Producing non-standard
timber frame structures and
planed wood since 2006

www.viesve.com

Telephone: +370 652 17268
E-mail: info@viesve.lt

Garden Cabins and Summer Houses



Cladding, decking and other
planed wood products



Timber Frame Houses



Heat Pumps: A 'no-brainer' for self and custom build homes.

If you're building a new home or creating your dream barn conversion, there's not usually much excitement surrounding choosing the heating system.

They just don't get homeowners blood pumping in quite the same way as a new kitchen, that glass balustrade or the latest Farrow & Ball colour chart!

But with an impending ban on gas boilers from 2025 to help reach the Government's target of net-zero emissions, coupled with the real possibility that all homes who have a gas boiler could face a dreaded 'carbon tax' at some in the future; a financial penalty that aims to bring under control the fact that 14% of UK greenhouse gases come from our homes, then installing a heat pump now really is the common-sense option.

For those involved in self or custom builds installing a ground, air, or water sourced heat pump will not only provide for 100% of the heating and hot water needs but will future proof your new home from fossil fuel price rises or penalties. In addition, the current financial incentive from the government in the form of RHI Scheme means that most, if not all, of the cost of installing is paid back to you over 7 years.

And for some homes on new plots, the savings based on not having a gas connection brought to site can run into the thousands!

If you're doing a new build (or a significant renovation), it's the perfect time to install these systems as you don't have the added hassle, or cost, of re-designing the radiators or

underfloor heating system, because you're installing from scratch anyway.

IMS Heat Pumps clients have been future proofing their homes for over 20 years. We work with you, your architect or main contractor to specify the right system for your home. For custom builds and renovations, right now heat pumps really are a no-brainer!

IMS Heat Pumps Limited

Contact
T 0114 327 100 / 01738 827 244
contact@imsheatpumps.co.uk
www.imsheatpumps.co.uk



Specialist in large section timber, irregular sizes and long lengths. Sections 600 x 600 and lengths to 15m

Planed, treated timber, railway sleepers, tile battens, aris rail, feather edge boards, telegraph poles, glulam and more

WARDELL LONG LENGTHS

Tel: 01469 532922

info@longlengths.com www.longlengths.com

TimbaBuild

A family-run Cornish business based in Newham & The Port of Truro, Cornwall.

TimbaBuild, which specialises in everything timber-related from timber framed houses, garden features, Furniture and decking, provides full design, planning and construction of a client's project, creating a strong relationship with customers to create the best finished product for them.

Paul Harvey, owner and director of TimbaBuild, said: "We operate an open door policy, where we invite the client in to view their project during manufacture, we listen, advise and discuss every part of the project.

Priding themselves on a dedicated customer service, TimbaBuild's team keep clients up to date with every element of their build thanks to a dedicated online portal, which includes invoices and quotations, as well as a finance tracker, enabling them to see where their money is being spent.

Paul said: "A daily diary is also kept, so that the client knows what has been accomplished per day, every day. In many instances, we offer a time lapse camera service, and present it to the client at the end of the project, completely free of charge."

Paul added that this combination of great customer service and quality finished products, has resulted in the continued client list returning time and time again.

Contact
Info@timbabuildstructures.co.uk
www.timbabuildstructures.co.uk



External timber cladding; size does matter

The Timber Decking & Cladding Association (TDCA) is an independent, not-for-profit advisory organisation – established to influence and promote good industry practice. This year, our focus is around highlighting the key information that those buying, selling and using external timber cladding should be aware of.

A specific subject is the size of cladding profiles, specifically tongue and groove (T&G) which is an interlocking system where size matters most. According to BS8605 – External Timber Cladding Part 1: Method of Specifying, for medium

movement timbers such as Siberian larch, the profile width for a T&G board is restricted to a maximum of 125mm.

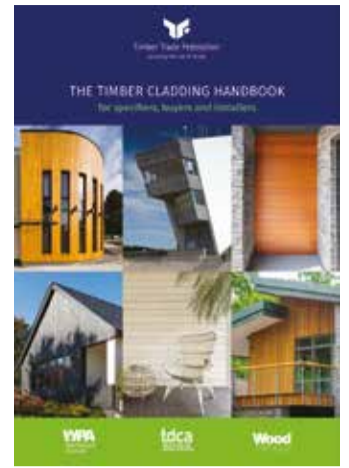
Further guidance on tongue dimensions and movement gaps is provided with bigger gaps and tongues being required for wider boards; at 125mm wide board the standard states a minimum movement gap (mg) of 4mm, tongue width (tw) at least 15mm and thickness (tt) at least 7.5mm.

For those looking for added assurances of

quality, the TDCA operates the CladMark quality accreditation schemes which cover products, suppliers and installers. They provide audited verification of compliance with good manufacturing practices and sound installation techniques trusted by the TDCA and the wider industry.

The Timber Cladding Handbook is available as a free pdf download with a printed version available for £12 (inc p&p), go to:

www.tdca.org.uk/publications



Maintenance free solutions for decking and landscaping



Did you know that many real wood decks require full replacement within seven years of installation? This coupled with annual maintenance costs for labour and materials can make your wooden deck very expensive in the long run and if you are doing it yourself it's going to use up a lot of your time. Time that could be spent enjoying your garden instead.

A Gardening Express survey found that homeowners change their patio or deck six times over the course of their gardening lifetime at a cost of around £9000. Fortunately, if you are installing or replacing your deck there is a solution in the form of recycled plastic decking. A long-lasting alternative to wood.

Utilising plastic that would ordinarily be sent to landfill or incinerators, Kedel turn it into long lasting, maintenance free landscaping materials, with the look and feel of real wood but that can last a lifetime, so you just do the job once!

The slightly higher initial price of recycled plastic wood is quickly recovered through savings on maintenance or replacement, resulting in lower lifetime costs when compared to real wood designs. This initial outlay can be recouped in as little as 2 to 5 years. Recycled plastic decking is splinter free, frost proof, shock proof, resistant to most chemicals and impervious to fungi and water.

Kedel Marine Decking Boards can be used for various landscaping projects and are ideal for boardwalks, pontoons, jetties, access ramps and fishing pags.

For more information on any of Kedel's products and services, contact us today for help and advice.

Contact
T 01282 861325
info@kedel.co.uk
www.kedel.co.uk

Missing out on tax relief for new commercial property construction or renovation?

Reclaim between 20%-40% of the price paid to purchase, refurbish or build commercial property.

SCAN ME FOR MORE INFO

Scan to watch a quick 2-minute explainer video
Or visit www.gozel.co.uk

- Free consultation
- Free property survey
- Chartered Tax Advisors
- Rated "Excellent" on Trustpilot

If you're building or renovating commercial property, UK Tax legislation allows you to claim tax relief on the embedded fixtures that you install in land and buildings - as long as you pay tax in the UK.

On average the owners and developers we help claim around **£35,000** in tax savings per building.

Not a tax relief usually claimed by accountants. Does not affect Capital Gains Tax.

Call for an estimate on: **01633 287898**

FOUR OAKS Cash & Carry

Plants & Sundries for the Trade

The largest horticultural "One Stop Shop" in the UK

Hedging - Topiary - Laurus Nobilis - Shrubs & Trees
Over 1500 lines of trees and shrubs from starter to mature specimen sizes.

Huge range of shrubs from 3 Litre - 15 Litre
Alpines & Perennials. Seilont Nurseries. Young Plants. Pack bedding & Vegetables.

Added Value Lines - April onwards:-
Hanging Baskets, Planted Patio Pots, 13cm potted Zonal Geraniums, Fuchias, Osteospermums, Marguerites & Standard Fuchias in 10 litre pots.

Sundries - Garden Stoneware - Yorkshire Flowerpots - Draper Tools

Garden Furniture - Italian & Spanish Stock - Extensive Pot Range

FOUR OAKS CASH & CARRY
Longshoot Road, Lower Withington, Macclesfield, Cheshire SK11 9DX
Tel: **01477 571797** Fax: **01477 571314**
marion@fouroaks-nurseries.co.uk www.fouroaks-nurseries.com

Catshead Ltd

T: **07748 973226**
www.catsheadforestry.co.uk
info@catshead.co.uk

Forestry, Estate & Woodland Management Services

Timber Harvesting Specialist low impact harvesting using a precision stroke delimeter harvesting head for precision timber cutting • **Timber Extraction** Environmentally friendly timber extraction using low ground pressure machinery, ideally suited to wet and difficult sites • **Timber Marketing and Standing Sale** Marketing and sale of standing timber and cut roundwood of all types and grades • **Woodland Management** Undertaking all aspects of Woodland Management from pest control and pesticide application, vegetation management, site clearance, windrowing and brash raking, site preparation and replanting • **Estate Management** Site drainage, ditch clearing, bracken and gorse control, forestry roads and infrastructure and work on Sites of Special Scientific Interest (SSSI).

From winter to summer and everything in between, the Astreea Igloo has got you covered

The Astreea Igloo is a weatherproof bubble, designed for outside use, to give your guests shelter from the weather. But it isn't just any ordinary outdoor cover, made in a European aerospace factory the frame is made entirely from aerospace aluminium, meaning its built to last.

However, this doesn't mean the Astreea Igloo compromises on style. Covers to suit all seasons and vintage lighting make the igloo an

inviting environment for your guests to spend time with loved ones.

Pick and mix your covers to suit the season

All you will need is one frame which will serve as a dining space all year round. Simply swap out the covers depending on the season and forecast.

NEW Igloo Pro
Astreea have just released a new

cover for their igloo frame. The cover is made from polycarbonate panels giving a more permanent and robust structure.

The new Igloo Pro along with its polycarbonate cover includes a sliding door panel with a locking system allowing for easier access. The 360-degree dome allows you an uninterrupted view without having to feel the chill of a late night. Ideal for restaurants, home dining, glamping,

outdoor events, or garden igloo.

There are so many uses and possibilities for our outside cover from providing protection from the elements for restaurant diners or a garden furniture alternative for your home.

Visit astreeuk.co.uk to find out more or call 0330 2200671 to speak to one of our friendly advisors.



ROPEWORK-UK
Bespoke handmade products to meet your individual requirements. Scramble nets, Rope bridges, Rope swings & much more.

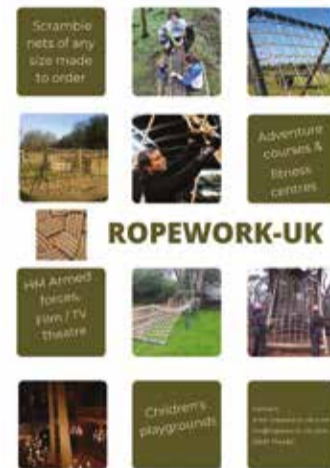
Contact Ian Outram - ian@ropework-uk
Tel: 01931 714482
www.ropework-uk.com or find us on Facebook.

ROPEWORK-UK

Ian Outram, founder of ROPEWORK-UK developed an interest in rope work whilst working in the Ships Riggers with the Fishermen of Fleetwood, Lancashire. For over 40 years his experience of creating RopeWork solutions to everyday challenges in work and play is based on his passion for preserving the heritage of RopeWork its materials and way of working.

Throughout the website www.ropework-uk.com you will find examples of the rope work solutions available for play, leisure, home & garden and commercial use. More than just an art form each Ropework solution demonstrates inventiveness and innovation in using Ropework creatively for you to enjoy. ROPEWORK-UK has supplied products throughout the UK, EU & various countries around the world to clients such as:- Whipsnade Wild Animal Park, Blenheim Palace, Chatsworth House, Legoland Windsor, Oberhausen retail & leisure complex (Essen Germany) as well as countless play parks & indoor fun centres across the UK, via manufacturers, PlayQuest Ltd, MonkeyBusiness, Hope Adventure Play, The play Co. Adventure Concepts Ltd & Playspace Ltd.

"Organisations such as local authorities, The Scout movement & holiday parks such as Centre Parks &



PGL activity camps have also benefitted from ROPEWORK-UK and its various products & solutions. ROPEWORK-UK also Supplies HM Armed forces throughout the UK with its assault course & fitness requirements for rope based products.

The Film, Theatre & Television industries are also valued consumers of bespoke products made to order by ROPEWORK-UK" Such the Dr Doolittle Movie, Outlander & most recently the big Rope bridge scene on EMMERDALE.

www.ropework-uk.com

ModCon Cabin Trader Ltd



ModCon Cabin Trader was formed in 2017 by Alan Willetts of whom has 25 years experience of working for some major manufacturers in the Modular & Portable Building Industry.

ModCon Cabins as it is also known manufactures and supplies Steel Anti Vandal Portable Cabins, Containers, Modular Buildings and all site ancillary items associated with the Portable Building Industry. Please visit www.modconcabins.co.uk

Items such as Portable Offices, Canteens, Toilet units, Drying units, Storage Containers, Chemstores, Smoking Shelters, Effluent Tanks, Staircases are regular and repeat produced items that we manufacture for our clients.

Based in Gloucestershire in the South West we are logistically nicely placed around all the major motorway networks for ease of transportation.

Our workforce are all very skilled and experienced fabricators of whom have many years experience working within our industry and so know the expectancy of our customers requirements so you can be sure that if you approach ModCon Cabins to undertake your work you are in very good hands!

Being that all items produced are mostly built on a jig and to customers own specification we are open to undertaking bespoke enquiries too so please feel free to engage with us here at ModCon Cabins even if you have a rather random enquiry for certain products.

Why not also take a look at ModCon Cabin Traders other side of the business which is an Auction/Resale website that allows all and sundry to utilise the site to sell new & used Portable Building products which operates very similar to a well-known auction/resale site we are all familiar with, however only for products relating to our industry.

Please visit www.modconcabintrader.com

ModConCabins
Manufacturer of Modular, Containers & Cabins

Steel AV Cabins • Smoking Shelters • Chemical Stores & Storage Units
Staircases & Steps • Effluent Tanks • Water Bowsers • Turnstiles

INTRODUCING

MODCONCABINTRADER
www.modconcabintrader.com

ModCon Cabin Trader, the Modular, Portable Building & Plant Industry related, Resale/Auction website!

alan@modconcabintrader.com +44) 0333 404 8822 07842 318869

Eco Clipper FM4 Sport for sporting grounds

Eco Clipper, known for electric mowers for the turf industry, has introduced a special version for the maintenance of sports and recreational grounds. The 4.11 m wide front mower features four independent cutting decks. For the FM4 Sport, the side decks can be folded in independently, allowing for narrow passages to be mowed.

The smooth decks with fast rotating small blades ensure a high quality cut and good clippings dispersion. The clippings are also spread well in wet grass. This makes it possible to schedule this mower almost independently of the weather.

The Eco Clipper mowers are further distinguished by the high

possible mowing speed. This means that on average a sports field can be mowed in less than fifteen minutes with an Eco Clipper FM4 Sport.

To operate the mower a 40 HP tractor is already sufficient. The electricity to drive the mower is generated by a PTO driven generator. For larger tractors, the generator can be fitted on the front mower. For smaller tractors and optimized weight balance Eco Clipper offers a separate generator unit for behind the tractor.

Contact
info@vanmac.co.uk
www.ecoclipper.com



Create the ultimate outdoor entertaining experience



Quan Garden Art are a premium outdoor entertaining brand, specialising in strikingly designed 'Fire Plate BBQ's' where you cook on a hot plate surrounding a fire-pit.

Not only does this form of outdoor cooking take your barbecued food to the next level, it also provides a focal point for family and friends to stand around whilst enjoying a drink and conversation, making this the most social BBQ experience on the market.

The pandemic has certainly led to a significant increase in outdoor entertaining, and this trend looks set to continue. Quan are currently seeking to partner with property developers across the UK, to offer stylish and unique 'Outdoor Entertaining Packages' to prospective new homeowners.

Quan UK also offer a Professional range suitable for outdoor areas in restaurants and hotels, where chefs can provide real theatre outdoors – as watching someone cook on a Quan Fire Plate makes for a mesmerising experience. These are products that will transform the way you BBQ!

Please contact Jon at Quan on: 07811 408688 for further info and see: www.quangarden.art for full product range.

LEGUAN[®]

Reach new heights with the next generation spider lifts.



user-friendly interface.

exceptional terrainability.

unrivaled outreach.

Versatile and reliable self-propelled access platforms.

www.avanttecno.com/uk/leguan sales@avant.co.uk



Air Conditioning and Heating Solutions

Clima-Tech was founded in 2015 by Ashley Shemmings, a self-employed specialist in heating engineering with over 18 years' experience in the engineering industry. Clima-Tech is a family run business and alongside Ashley, wife Franki Shemmings works in the office. What started off as a maintenance and servicing company, soon evolved into a specialist multi-faceted service with a proven track record in the electrical, refrigeration, domestic, and commercial sectors. Clima-Tech is well trusted and well established in the renewable energy field.

Clima-Tech is hands on and works closely with its clients to ensure that the best service is delivered.

Clima-Tech is an approved contractor by the following certified bodies: Microgeneration Certification Scheme (MCS), Renewable Energy Consumer Code (RECC), IWA, and REFCOM. Furthermore, Ashley has trained to the highest level, holding qualifications such as City and guilds 2360 NICEIC certified, City and guilds F-GAS, B-PEC G3 unvented, B-PEC Heat pump design, and B-PEC water regulation.

Clima-Tech has been the receiver of many awards over the years receiving first, second and third place in the following: 2019 National Energy Efficiency Awards, Energy Efficiency Champion and Commend Renewable Heat Installer & Contractor 2020/21 and the

National Energy Efficiency Awards 2020/21. Another milestone for the company was in 2021 when Clima-Tech employed its first member of staff. Clima-Tech specialise in a range of core services in the renewable energy field for MCS/RHI registration systems, Heat pumps, Heating systems, Electrical system design and installation, System commissioning, Air conditioning, Solar panel specification, design, installation, repair and maintenance, and Underfloor Heating and Plumbing works.

T 01728 684437
ashley@clima-techservices.co.uk
www.clima-techservices.co.uk



Easyflow



Easyflow offers you with a single point of contact and a turnkey solution for all your underfloor heating and liquid floor screed needs. From designing and installing your underfloor heating, to a full laser survey on site, to the supply and installation of your liquid floor screed.

Benefits of Underfloor Heating

- ▲ Up to 30% lower running costs than radiators
- ▲ Avoid overheating and energy waste - heats more efficiently using just 35-degree water
- ▲ Low carbon footprint
- ▲ Can be used in conjunction with any heat source
- ▲ Completely versatile, lay tiles, carpet, or wood
- ▲ Control remotely

Benefits of Liquid Floor Screed

- ▲ Reduced screed thickness
- ▲ Better heat conductivity
- ▲ Fast drying and thermally guaranteed options
- ▲ Can be force dried
- ▲ Greater compressive strength than traditional screeds
- ▲ Levels survey carried out for accuracy
- ▲ Environmentally friendly

UNDERFLOOR HEATING

We are dedicated to providing our clients with the very best in underfloor heating systems, together with customer care above and beyond expectations. Our experienced consultants are dedicated to investing their time in planning and designing your underfloor heating system, ensuring that you are supplied with an underfloor system of the very highest standard. At Easyflow good advice and quality products go hand in hand.

LIQUID FLOOR SCREED

Anyhydrite flowing floor screeds are based on a synthetic anhydrite binder rather than OPC Cement giving them many unique benefits over cement screeds, the most obvious difference is their fluid application compared to semi dry cement screeds, but they also offer higher compressive and flexural strength, lower shrinkage, eliminate reinforcement, improve surface finish and greatly improved underfloor heating performance.

FASTER-DRYING SCREEDS

Easyflow can now supply a range of faster-drying products that can offer reduced drying times - 10 days for tiling and 28 days for wooden floors in non-heated floors, in heated floors 14 days for tiling and 21 days for wooden floors.

T 01743 298001
www.easyflow.org







Clima-Tech HVAC Ltd

Air Conditioning & Heating Solutions!

Heating	Air Conditioning	Solar Panels	Electrical
	<ul style="list-style-type: none"> ● MCS/RHI registration Systems ● Heat pump specification, design, installation ● Heat pump repair, servicing and maintenance ● Heating system design and installation ● Heating system renovation and upgrades ● Electrical system design and installation ● System commissioning ● Technical services ● F-Gas related works ● Air conditioning specification, design, installation ● Air conditioning servicing and maintenance ● Underfloor heating and plumbing works ● Solar panels specification, design, installation ● Solar panels repair and maintenance ● Wind turbines 		

O: 01728 684437 M: 07966 182774
E: ashley@clima-techservices.co.uk W: www.clima-techservices.co.uk

Oakhill Barn, Bedfield Road, Earl Soham, Woodbridge, IP13 7SL








Construction Dust – is this real?



Do you know how many workplace deaths occur in the UK each year? Out of the 25-30 million workers in the UK, how many do you think did not make it home following an accident at work? HSE statistics will tell you that in the period 2020/21 there were a total of 142 fatal injuries; clearly 142 too many but what was the main cause? Slips, trips, falls from height, moving vehicles I hear you say? In the same period 35 of those fatal accidents resulted from a fall and 25 were resultant from moving vehicles (deaths on public roads average 1,500 – 2,000!)

Compare this to occupational lung illness; in December 2021 the HSE also published "Occupational Lung Disease statistics in Great Britain, 2021"; this estimates that there are 12,000 deaths EACH YEAR linked to past exposures in the workplace and furthermore another 17,000 new cases of breathing and lung problems

So, what scares you most, falling from a ladder, being hit by a moving vehicle or breathing in dust? The problem is that breathing in dust is not painful and the consequences are not immediate. It is likely then that if you breathed in some dust today, you will likely do it again tomorrow and again the next day and these small, apparently harmless, low level exposures if repeated over time can have significant impact on long term health; much like smoking!

Wearing a respirator (not a face covering) will only be effective if it fits the face of the wearer. The size of the dust particles that can cause lung disease is much smaller than that visible by a human eye so the unique shape of every face, not to mention things like stubble, may prevent the mask sitting tightly on the face and will create leakage paths. This is why wearers of any tight fitting RPE are required to be clean shaven in the area of the face seal and should have undertaken a mask fit test to ensure the make, model, type and size of respirator in use is suitable for them.

If you want confidence in your respirator mask, then make sure your fit test is conducted by a competent technician using verifiable testing equipment. The AccuFIT quantitative respirator fit test device is capable of testing any type of tight fitting respirator and will collect and present quantifiable data that demonstrates the adequacy of the fit of the respirator on the face of the wearer in a matter of minutes. Following the effects of Covid, relying on the taste sensitivity of a wearer to conduct a fit test is becoming less reliable so for a cost effective, fast, efficient and accurate measure of respirator fit make sure your test is conducted using an AccuFIT – your respirator fit measure accurately.

www.firesafeinternational.com



Harrow School has IAAF-standard running track



The re-built athletics facilities at Harrow School included an IAAF-standard running track, facilities for long jump, high jump, discus and all the main athletics events, plus a water jump for the steeplechase and an area for the pole vault event – a relatively rare feature in UK school athletics facilities.

Hauraton SPORTFIX components installed at the Harrow School sports complex include; drainage channels around the edge of the running track, sand traps and soft kerb edging around the long jump pit and a water jump kit on the steeplechase track.

At any time in the UK, rain can stop

play and on tennis hard courts the build-up of water can take some time to run away if attention has not been paid to the surface water drainage requirement. At Harrow School tennis courts this is not a problem as a discreet drainage channel run located just below the net efficiently drains away any excess rainwater.

Over the years Hauraton have built up a fund of knowledge, second to none, of how to drain sports areas be they soccer grounds, athletic tracks or tennis courts.



Other components in the SPORTFIX range include; Electrical distribution shafts, Service channels for cable management, pitch dish edging components and drainage channels specifically designed for artificial turf pitches.

For Case Studies go to www.drainage-projects.co.uk

For details of Hauraton SPORTFIX components go to www.hauraton.co.uk



AccuTec IHS
Analytical Instrumentation

NEW AccuFIT 9000® PRO

- ✓ Fit Tests ALL Tight-Fitting Full & Half Mask Respirators
- ✓ Tests All Respirator Types
- ✓ Meets UK INDG 479 Protocol and fully programmable to meet any other
- ✓ Rugged & quick to deploy
- ✓ Standalone or PC Operation
- ✓ WiFi Enabled
- ✓ Runs anywhere with new Battery Pack*

AccuFIT 9000® Machines use the Ambient Aerosol Method (CNC) of fit testing, which works on full-face, half-face, and even disposable masks and respirators.



*Battery Pack Sold Separately.

UK/EU Sales Enquiries:
Email: sales@firesafeinternational.com
Call: +44 (0) 1743 761000

Customer Service:
info@accutec-ihs.com
accutec.com

Selwood innovates to build on its position as the UK's leading pumping solutions provider

Selwood's reputation as the number one pumping solutions provider for the construction industry is built on exceptional products, people and service.

As specialists in engineered pump solutions, fluid handling and water treatment, Selwood covers the full range of pumping needs from simple rentals to the development of complex solutions for major building projects.

Operating from a comprehensive network of branches around the UK, including a new London solutions

centre, the company also provides a genuine 24 hr emergency callout service.

Selwood's focus is on innovating through technology to provide the safest, most cost-efficient and reliable solutions for construction industry projects while helping businesses meet their goals on environmental responsibility.

For example, it was the first UK pump rental company to offer pumps that can be fuelled by Hydrotreated Vegetable Oil (HVO) in an industry-leading move that

will significantly cut greenhouse gas emissions.

Selwood's in-house telemetry system, SelWatch makes it easy to monitor pumps off-site, and to troubleshoot potential issues remotely from a laptop, phone or tablet from anywhere in the world.

Contact the Selwood team for information on our construction industry pumping solutions.

T 0333 014 2000
www.selwood.co.uk



YOUR MATERIAL HANDLING PARTNER

**FORKLIFT HIRE - FORKLIFT SALES
SERVICE & MAINTENANCE**



THE RIGHT SOLUTION FOR EVERY APPLICATION



Davison Forklift

- The right solution for every application

Davison Forklift became a limited company in 1977 and grew as supplier of forklifts to the manufacturing, logistics and supply chain of the West Midlands and surrounding areas. In the summer of 2017 the company was purchased by the Malcolm Harrison Group of Companies with the intention to grow organically and extend our hire portfolio. As part of this ambitious growth projection in early 2021 we moved into our current premises located outside Telford in Shropshire.

We are now dealers for Clark forklifts, AUSA Equipment and Machinery. As a company we have carefully selected our partners to offer the full range of counter balance forklifts, rough terrain forklifts and telehandlers.

Davison Forklift Ltd are members of the Forklift Truck Association/BITA and CFTS accredited to perform Thorough Examinations to the Quality assurance Procedural Code.

Our product range enables us to offer equipment for long and short time hire and also sell new and used machines from our extensive stock.

With our industry wide connections we can also source equipment from other manufacturers and have a range of JCB TLT and telehandlers arriving this summer.

For more information on our products and services please contact us on 01952 915060 or email sales@davison-forklift.co.uk

**JCB 540-14 & 535-125
TELEHANDLERS**



PREPARED FOR ANYTHING



**NEW HOLLAND
T7.210**



WE PRIDE OURSELVES IN SUPPLYING A PROMPT RELIABLE AND HELPFUL SERVICE

davison-forklift.co.uk T. 01952 915060 sales@davison-forklift.co.uk



Smart Glass & Film / Digital Signage

DISPLAY365 - would like to introduce you to a world of innovative ideas and products for home, office and retail stores. From Switchable Glass & Film to Digital Signage and even Smart Android Mirrors, we turn your ideas into reality.

Our Smart Glass and Film offers great flexibility when it comes to privacy at homes, in the office and even for retail stores. Depending on budget you can opt for either the retrofit film or glass options both of which give the same privacy effect from opaque to clear and vice versa instantly. Transparency ranges from 84 to 90% and if you have a high enough budget then you can try our NEW Ultra clear low haze privacy glass.

We also have a range of simple to use plug and play digital displays for all types of retail and office applications with high resolution and high brightness to be visible even in sunlight. Digital signage is seeing a boom as competition from internet sales grows further, thus making it even more important for stores to attract customers.

Moreover, these displays can be changed instantly with new product designs and special offers. They can also be controlled remotely and thus also saves time and on staff having to constantly change outdated print displays. With Smart Android Mirrors you can enhance your hotel or home easily. These IP rated mirrors come

with a 21inch Android screen built in as well as anti-fogging feature. The screen has full tablet functionality and upgrades the bathroom as we move into an ever more modern lifestyle.

So, if you are looking for the next amazing product for your home, office or retail store then please visit our website for more information or email us with an idea and we will be happy to make it a reality.

T +44 (0)7546 551 699
www.display365.co.uk
sales@display365.co.uk



Zoo Architectural Hardware



Zoo Hardware are designers and suppliers of architectural door hardware including door handles, knobs, locks, cylinders, door closers, hinges and more. All of their products are produced to the highest quality in aluminium, brass, steel and zinc. Every item they produce is selected for its quality and value for money and they never compromise quality for cheaper prices. Zoo Hardware are confident in their belief that they can offer some of the highest quality products at the most competitive prices on the market.

Their in-house design team is fully qualified in all aspects of design and production and they constantly aim to supply innovative, stylish and cost-effective hardware solutions settling for nothing less than top quality. Design facilities at their head office means they can create, manufacture and deliver state-of-the-art products to stay in-tune with current design trends and ahead of the competition.

The Zoo Hardware product ranges cover all aspects of architectural ironmongery, including: Vier – a precision design range of levers, hinges, door closers, DIN locks and cylinders created for the exacting needs of Architects, Specifiers and Contractors; Fulton & Bray – traditional and classic brass door hardware and accessories ideal for period and contemporary properties; Rosso Tecnica – a new European inspired range of designer levers and accessories made from SS304 and finished in a selection of new hard-wearing finishes; and Foxcote Foundries – a wide range of traditional black antique door furniture and window fittings.

View their full range of products at: www.zoohardware.co.uk or call one of their friendly sales team on: +44 (0)1228 672900 to discuss your requirements or to request a catalogue.

Perimeter security has never been more important whether at home or at work. Advanced Perimeter Systems range of perimeter security systems provide solutions for every security challenge.

Our solutions are quality assured, proven, reliable, robust and simple to install. Whatever challenges you face securing your property why not give us a call to discuss your needs we may be able to design a bespoke solution just for you.

Advanced Perimeter Systems has a reputation as a manufacturer and designer of high quality, high security, perimeter security solutions. We have a range of products available for installation to make any premises more secure from industrial, commercial to domestic property.

T: 01786 479862 | enquiries@apsuk.net
www.advancedperimetersystems.com

43" or 55" Ultra High Brightness LCD Double Sided Hanging Window Display

- 3,500cd/m² & 1,000cd/m² Double-Sided
- Freestanding Version
- Smart Temperature Control
- Integrated Android Media Player
- Plug and Play
- Network Upgrade
- 24/7 Commercial Use
- 3-Year Warranty
- Lifetime Tech Support

sales@display365.co.uk
www.display365.co.uk



ROSSO TECNICA is our new and exclusive range of European inspired designer levers. Manufactured from Grade 304 stainless steel and finished in a new selection of stunning hard-wearing finishes, these levers are the perfect accompaniment to the latest trends in interior fashion.

AS PART OF OUR ONGOING COMMITMENT TO REDUCE OUR IMPACT ON THE ENVIRONMENT, THE ROSSO TECNICA RANGE IS SUPPLIED WITHOUT ANY PLASTIC PACKAGING. NO POLY-BAGS ARE USED IN THIS RANGE.

T : +44 (0) 1228 672 900
E : sales@zoo-hardware.co.uk
W : www.zoohardware.co.uk

Rosso Tecnica is part of Zoo Hardware

A fusion of modern and traditional design

Inquisitive by nature with a restless ambition to continuously improve, George Barnsdale has been manufacturing premium, high performance timber windows and doors since 1884.

Designed to provide a long life and low maintenance, George Barnsdale has the capabilities to blend design with premium material and cutting-edge technologies to ensure its windows and doors are made to the most exacting standards whilst delivering only exceptional performance.



Unique in its field, there are few UK manufacturers who could claim the company's depth and experience of building products that fit so precisely into a customer's programme of work. Born out of a homemade workshop, George Barnsdale began as a small carpentry business that soon built up a reputation of high quality craftsmanship. Over the years, the company has grown incrementally boasting creativity, vision and expertise that goes completely unrivalled amongst its competitors.



Confirming its industry excellence, George Barnsdale's services and products are accredited by ISO 9001, ISO 14001, and ISO 45001 certifications. Furthermore, the company is also classed as a BlueSky Certified Manufacturer, a Constructionline Gold Member, safecontractor approved, marked by the FSC - showing all its timber comes from sustainable sources, and BFRC test approved.

Based in Donnington, Lincolnshire, George Barnsdale offers a nationwide project management and installation service. Its product range includes a choice of timber windows, timber doors, timber patio doors, and is backed by a high-class design service that gives customers the choice of various colours and coatings, windows and doors furniture, glazing options, profiles and detail of timber.

For the professional's, George Barnsdale has decades of experience working with some of the UK's leading architects, construction companies, developers, restorers and other professionals to deliver superior bespoke timber windows and doors for projects of all sizes.

Whether it be solutions for a new build or a refurbishment, each window and door is professionally designed to the exact specifications that encompass the sympathetic nature of the building's architecture and surroundings. George Barnsdale offers a full turnkey service of solutions to help with your project from start to finish. From its exquisite range of windows to technical specifications, literature, project management services, sustainable solutions and access to its UK-wide approved partner network.

For homeowners, George Barnsdale can supply everything you need to give your home the perfect view, alongside a superior fit-out of bespoke timber windows, to bi-fold doors and frames. Guaranteed to provide years of high performance with minimal maintenance, George Barnsdale has over 135 years of expert craftsmanship that is reinforced by its suppliers. Offering the following product guarantees; 10-year manufacturer's guarantee



against paint coating system failure, 7-year manufacturer's guarantee against stain coating system failure, 30-year preservative manufacturer's guarantee against preservative failure, and many more, customers can rest assured they are receiving the upmost highest-quality service.

If you would like more information, please see below.

T 01775 823000
contactus@georgebarnsdale.co.uk
www.georgebarnsdale.co.uk

Compact and powerful stump grinders from Predator

Predator is an industry leading supplier of high performance, narrow access tree stump grinders, which was established in 2003. The company's founders were originally working in the tree care industry, offering tree stump removal to their clients. Back then, stump grinders were often large wheeled or tracked machines. The machines were frequently built in the US where they have plenty of space to manoeuvre their machinery. In the UK, back gardens tend to provide difficult access, which creates a struggle for arborists attempting to get their stump grinding machinery into a back garden.



"The founders were used to this same problem, and saw a need in the market for a compact tree stump grinder that are powerful enough for commercial stump removal on large sites, but also compact and narrow, to be able to get through the tight garden gates of the UK. The first Predator stump grinders built were the narrow tracked 28X, which were only 26 inches wide and therefore able to get through any garden gate, but with a 28 horsepower diesel engine and deep grinding depth, they could handle nearly any size stump," said Simon Bradshaw, Predator Sales.

From its location in Henley on Thames in Oxfordshire, and its 30 dealer and service centre locations around the UK and globally located dealers in North America, New Zealand



and Australia; Predator supplies cutting edge, tree stump removal tools for Arboriculture professionals, Plant Hire firms, Local authorities and Contractors worldwide.

"We are the only tree stump grinder company that focuses exclusively on the design and supply of narrow access stump removal machinery, making us the best choice on the market for companies and individuals in the UK, where difficult access to the stump is the norm. We offer a comprehensive, affordable range of stump grinders, from portable tools you can carry, all the way to more powerful radio controlled tracked machines," added Simon.

One of the most remarkable machines within Predator's range is its best seller; the Predator 38RX. The Predator 38RX is a radio controlled, tracked machine which is 26 inches wide and maintains an impressive 38 horsepower. Specifically designed to provide narrow access and high productivity, the Predator 38X is able to handle tough access stumps located in places such as back gardens and rough terrain

commercial sites. "We have now upgraded the unit with a dozer blade and tow bar. Making it the narrowest machine on the market for its power and performance. It will now grind 22 inches deep, almost twice the depth of the closest competing machine," stated Simon.

The Predator 38RX has been designed to meet the ever toughening regulations, and as such, the noise levels are extremely low and the machine utilises its refined fuel injected Kohler EFI engine, resulting in minimal vibration. The Predator 38RX



is a highly productive and innovate machine, providing an easy to use, low maintenance and compact solution.

In terms of recent developments, Predator saw an increase during the pandemic in response to people taking on more garden, commercial, construction and landscaping projects. Simon explained that, "Our dealer network is constantly growing, prior to the dealer network being launched in 2018, we were selling direct to customers.



Now it is far more convenient to buy and service Predators' as there is often a dealer or service centre on their doorstep. It has made it more important to forecast required components, parts and stock requirements to keep up with demand. Though the COVID-19 situation made manufacturing very challenging, with component delays, the Arboriculture industry was also incredibly busy in 2020."

Predator maintains that it will continue to look at new ways to improve upon its machinery and strives to always provide new solutions to make its machinery more compact, with increased power and performance.

For more information, please see below.
 T 01189 404929
www.predator-mfg.com

Swifix Innovative Fixings for use with EWI and MMC Systems

The SWIFIX fixing solution has been designed and developed specifically for refitting and installing both lightweight and heavy items through External Wall Insulation (ETICS) systems.

The fixings can be used during or after the EWI system installation, providing the most cost effective and maintenance-free solution for the market, whilst also ensuring the integrity and protection of the EWI system protecting guarantees and warranties.

The solution is suitable for all system finishes from Brick Slip, Textured and Rough-Cast / Dashing and through all types of insulation types and thicknesses of 50 mm to 300 mm.

Fully tested and recommended by numerous EWI system

designers and installers across the UK for securing any item from bird netting external lights and rainwater goods to Air Source Heat Pumps and Canopies.

With the growth of the retrofitting sector and requirements under Pas2030/35, the SWIFIX provides the ideal solution to ensure compliance, along with being the perfect maintenance solution for securing items through External Wall Insulation during the life of the system, whilst protecting the integrity of the installation.

Whilst originally developed for the retrofit sector, we have seen an increase in the use in the MMC and New Build Sectors supplying modular built homes, from ilke Homes, Elliot Group and Rollalong Off Site Construction whilst receiving recommendations from the NHBC and Sky.

Recently winning the Innovation award at the INCA (Insulated and Cladding Association) Awards ceremony the judges acknowledged that "innovation in fixtures and fittings is essential and were impressed by the range of fixings, universally available, to suit the many different types of EWI systems and finishes and an excellent alternative which contributes to thermal bridging" The judges were also impressed by this companies' ability to identify a gap in the market and successfully develop a solution to ensure the integrity and protection of EWI systems, a very impressive 'British Made' accomplishment.

To find out more go to www.swifix.co.uk



Manufacturing excellence since 1982



We are celebrating our 40th year in business this year at Fisher & Company! We manufacture high quality products for a wide variety of purposes from Highways & Streetlighting and Outdoor Power & Leisure to Sports Facilities, Car Parks, Markets and many other purposes.

We are having a good start to the year. Emily Greenway, who has been a stalwart of our Sales Team for the last 2 1/2 years has been rewarded with a promotion and has moved to the position of Operations Manager. She will now be overseeing the production and delivery schedule and materials purchasing amongst other tasks. We are very proud of her speedy progression within the company and we wish her every success in the British Powerlifting Championships in Scotland on 19th March, following on from her amazing medals achievement at the Europeans in December. We welcome to the Sales Team Naomi Anderson who is already helping our customers get the products they need.

Our last bit of great news is that we are also pleased to announce that we have now received our certification for Quality Management System ISO 9001:2015! So you can be assured that the service you receive is top notch and that we work to a consistent high quality that is matched only by the products we manufacture.

To get a quote for your latest project please contact the Sales Team on 0333 666 2122 or email info@fisherandcompany.co.uk

SWIFIX AWARD-WINNING FIXINGS FOR EWI & MMC

Swifix fixings have been designed and developed specifically for refitting and installing both lightweight and heavy items through EWI systems. The fixings can be used during or after the EWI system installation, providing a cost effective and maintenance-free solution, whilst also ensuring the integrity and protection of the EWI system. Fully tested and recommended by numerous EWI system providers and installers, the fixings are manufactured from high quality recycled plastic and provide an aesthetically pleasing appearance to enhance newly installed external wall insulation.

Recently receiving the Innovation Award at the recent INCA (Insulated Cladding & Render Association Awards), the fixings are an excellent alternative to timber pattresses. There are five basic fixings all compatible with any finish such as brick slip, render and spar dash. The fixings are manufactured in the UK in black and white, however bespoke finishes are available to compliment the finished render.



Fixings are available from www.swifix.co.uk and from various distributors and builders' merchants throughout the UK.



Qualitative & Quantitative Fit Testing NATIONWIDE

Priced from £30 per person

*discounted rate for group bookings

*We are fit2fit accredited for Qualitative fit testing

Train the tester & RPE refresher Fit testing courses

£175 plus VAT

*discounted rate when both courses are booked

PURCHASE YOUR FFP3 DISPOSABLE AND RESPIRATORS AT THE TIME OF YOUR FIT TEST

CAVITY
FIT TESTING

telephone: 0118 966 8291
email: bookings@cavitydentalstaff.co.uk
website: www.cavitydentalstaff.co.uk

Feeder Pillars for every purpose from Fisher & Company...



- 3 & 5mm Heavy Duty FFP Range
- Versatile BD Range - Mild and Stainless 304 or 316
- EV Charging Feeder Pillars
- Events, Markets, Sports & Leisure
- Traditional Range
- GRP including bespoke sizing
- Mini Pillars - SDMP Range
- Groundboxes



- Prewired - Bespoke
- Choice of locking
- Powder Coat Finishes
- Large or small orders
- All metal Feeder Pillars are made on the premises
- Fast Turnaround
- High quality build & finish

We have continued to manufacture and supply throughout the Covid-19 pandemic. Whilst we do experience some material supply chain issues, we are working hard to keep your supplies moving. Our delivery times are still from next day for stock and from 2-3 weeks for made to order. We continue to monitor the situation and adjust working practices for the safety of our staff and to achieve the delivery you need. Call or email our friendly Sales Team for a Quote or more information.



Tel: (+44) 0333 666 2122
www.fisherandcompany.co.uk
info@fisherandcompany.co.uk



Breathing new life into ancient timber

The story of the ancient kauri tree begins over 50,000 years ago in the late stone age. Humans were yet to set foot on the islands we now call New Zealand, and the kauri tree forests stretched for miles across the untouched landscape. Fast forward to today, and these same trees are finally being brought back to the surface to live again in the homes of a lucky few.

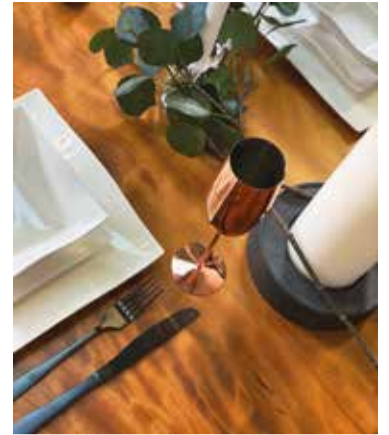
Our exclusive range of tables are handmade

from this finite resource with care and attention to detail at every stage. Each piece is truly unique and has a genuine story to tell. Custom made to each client, our tables are timeless yet functional and suit those who are looking for quality, craftsmanship and character from the furniture in their home or business.

Sustainability is at the heart of everything we do – no trees are chopped down to create

our furniture and any carbon produced from shipping is offset. Our furniture is built to last a lifetime and be passed on to the next generation. Let us help you and your clients create a truly special piece of furniture that will become a centrepiece for many years to come.

T 0800 048 5689
info@signaturekauri.com
www.signaturekauri.com



Air Source Heat Pumps

Ground Source Heat Pumps

Water Source Heat Pumps

Underfloor Heating

MVHR

Heating & Cooling



Oxon Energy Ltd are specialist installers of renewable heating and cooling solutions including air, ground and water source heat pumps, MVHR and underfloor heating for domestic properties in Oxfordshire and the surrounding areas. In-house design, specification, installation and aftercare. Experience exceptional service from concept to completion whether new build or retrofit renovation, modern or listed building. Heating your home shouldn't cost the Earth.

01491 410 110
info@oxonenergy.com
www.oxonenergy.com



ZARGES cases continue to deliver for vaccine rollout

ZARGES, the leading provider of cases for the transportation of hazardous goods, is continuing to support the NHS's COVID-19 vaccine booster programme with its K470 case, enabling the safe and hygienic transportation of the vaccine from manufacturer to deployment centres.



Transporting the vaccine at the right temperature is essential to preserving its efficacy. For the transport operators tasked with getting the vaccine from manufacturer to deployment during the initial roll-out in 2021, it was vital that they invested in rigorously tested temperature controlled casing.

ZARGES's K470 solution was especially configured to meet these requirements. A lightweight, aluminium solution which is available in 25 standard sizes and capacities, from 13 to 829 litres, the K470 universal box has proved a practical, effective means of transporting the vaccine.

Crucially, cases in the K470 range can provide unbeatable temperature-controlled options. In real-world testing environments, ZARGES cases have achieved storage temperatures of -74.3° - making it the ideal container of choice for cold chain logistics.

Mareike Bleile, Product Manager for Logistics and Industry at ZARGES, said: "The success of the first COVID-19 vaccination roll-out is fantastic and we are delighted that ZARGES cases have played a small role in protecting people against the virus. The specific circumstances in which the vaccinations can be transported highlights the importance of investing in the right cases, with the testing regimen and associated certifications that provide ultimate peace of mind. ZARGES is proud to provide a transport solution to the healthcare industry as the booster rollout continues into 2022; rigorously tested and supremely durable, the K470 range guarantees safe delivery, whatever the content."

To learn more about the full scope of ZARGES's transportation casing offering, please visit: www.zarges.co.uk



New-Look Training Provider Astutis Branches Out With Global Vision

Health and Safety training specialist Astutis Ltd is celebrating its 10-year anniversary with a significant expansion and rebrand of its services to reflect the dramatic changes in the workplace across the world as a result of the Covid-19 pandemic.

Astutis, one of the fastest-growing training providers in the UK, says launching newly-enhanced products and technological capability will future proof the business. However, its mission stays the same - to boost standards and the number of

qualified health and safety professionals internationally, so that businesses are better prepared to tackle similar catastrophes in the future.

Steve Terry, managing director of Astutis, says: "It's about learning from our environment and adapting towards a more progressive and environmentally sound future. It was vitally important that the fabric of our business was not altered in the process, but revolutionised. Our new brand values reflect our continued mission

to make the world a better place. That has not changed, what has changed is the world itself."

Going the extra mile is part and parcel of Astutis' role to help its worldwide customers achieve the very highest Health and Safety standards required by law to safeguard their operations. It has worked with over 4,000 global companies such as Amazon, Sky, Bentley and Aggreko since being set up in 2011.

www.astutis.com



Introducing Golden Hour Wine



Project: Golden Wine Hour
Product: Neutro Chevron HW16603
Architect: GDP Design Build

Taking its inspiration from early 20th century Paris is the stunning Golden Hour wine shop. Capturing the unique charm of Parisian boutiques, this elegant space sells an array of sustainable wines from across the globe.

To create a space that exudes effortless style along with maximizing the sense of lightness, Hawwoods was selected to supply a stunning wood floor solution for this neighbourhood wine shop in Florida.

Neutro Chevron from Hawwoods is paired alongside lush soft green walls to create a retail space that evokes warmth and familiarity with its light wood hues and chevron design. To further accentuate the warm tones of the wood, bespoke fittings and furniture have been selected that perfectly complement the parquet floor. The final touches to this raw and textured material palette include polished brass, polished marble and cotton twill all which help to bring the space to life without detracting from the natural beauty of the wood. With the help of Hawwoods, this one-of-a-kind space has been transformed to create an inviting space with a hint of Parisian charm.

info@hawwoods.com
www.hawwoods.com/uk



Astutis.

Lean on us.

Invest in Health & Safety training to cement your legacy.

- CDM in Practice
- IOSH Managing Safely
- NEBOSH Health and Safety Management for Construction

www.astutis.com
Phone: +44 (0)345 241 3685
Email: enquiries@astutis.com

2022 ★★★★★ feefo Gold Trusted Service Award

nebosh LEARNING PARTNER GOLD 807

iosh Approved training provider 1857

Making DIY a doddle!



amtech.[®]

Register for an account at dktools.com
or visit us at amtechdiy.com

3 YR
GUARANTEE

Thermafleece British sheep's wool Insulation

The perfect, safe insulation for lofts, walls, floors and roofs.

Thermafleece is a versatile, wool rich, natural and breathable insulation which is safe to touch and healthy to live with. A durable insulation which does much more than just prevent heat loss and save energy within the building, Thermafleece also plays a key part with other aspects of building performance. These include the ability to help maintain a healthy moisture balance, improve acoustic performance and help to provide a healthy indoor air quality.

Made from the Wool of hardy British Hill Sheep and manufactured in Yorkshire, Thermafleece is available as a roll or a batt in a variety of widths and thicknesses and designed to be installed by either the home-owner or professional, making it the ideal natural insulation choice for traditional and modern buildings and homes.

Contact
T 017684 86285
enquiries@thermafleece.com
www.thermafleece.com



WernerCo brings podium safety awareness to Pasma Tower Week

WernerCo, the leading access equipment specialist, and manufacturer of BoSS® towers, is announcing its support of this year's PASMA Tower Week with a series of safety awareness videos.



The globally celebrated event, launched by PASMA, will bring the industry together between 6-12th March to promote positive messages about mobile access towers, prefabricated tower scaffolds and low-level work platforms, showcasing the different applications in which these can be used and helping professionals to work safely by demonstrating best practice.

WernerCo is supporting this year's event by contributing to PASMA's 7-part bitesize safety video series with content focusing on podium steps; demonstrating best practice with how to choose a podium, and how to use it safely. The video series, which will also include content on tower stabilisation, fall protection, EN1004 safety standards and more, will be available to view on PASMA's social media and YouTube channels during Tower Week.

Approved PASMA training centre, and recent gold sponsor of falls prevention charity, The No Falls Foundation, WernerCo is dedicated to improving the safety of those who work at height through supporting educational safety initiatives and risk awareness across the industry.

Gurjeev Bola, Product Manager at WernerCo, stated: 'Falls from height remain one of the biggest causes of workplace injury; and when risks are overlooked due to the misconception that using equipment that isn't far off the ground doesn't come with dangers, accidents are all the more prone to occurrence. Educating users towards podium standards plays a crucial role in working safely, and we're looking forward to bringing this vital element of tower safety awareness to this year's PASMA Tower Week.'

'We are proud to work closely with PASMA, and to support their education initiatives in work at height safety. It is through relationships like these, between manufacturers and safety-orientated foundations, that as an industry we can hopefully work towards our shared goal of improving safety awareness and ultimately reduce the number of work at height accidents we see each year.'

WernerCo is an approved PASMA training centre and offers industry standard training programs on the safe use of mobile access towers and low-level access equipment.

For more information visit:
www.bosaccessstowers.com/services/training

For more information on Werner products please visit www.wernerco.co.uk



Traditional Joiners using modern machinery & techniques. Makers of Hardwood and Accoya™ Windows, Doors and Staircases

Established in 1968, Croxford's remain a family owned business committed to the finest quality craftsmanship which includes hand made hardwood doors, timber windows, staircases and bi-fold/patio doors. You will find our work all over the UK.

We supply for both commercial and private projects from the most modest new build/renovations to the most elegant of stately homes. Our timber doors and

windows not only look good and wear well, but with the option of traditional or modern hardware and highly efficient double glazed units they also help you save energy. Please call or visit our website for more information.



Tel: 01484 850892 Web: www.croxfords.co.uk Email: info@croxfords.co.uk



AQUATEC COATINGS SPECIALISTS IN WATER BASED PAINT TECHNOLOGY

Made for Modular...

We specialise in the development and manufacture of water based coatings tailored to the modular industry.



Proven Performance...

Our tried and trusted range of quality coating systems provide superior protection making them ideal for the demanding applications of the industry.



Service & Support...

We supply a next day delivery service and our sales and technical team provide full customer support.



Our extensive product range includes...

- 1 & 2 Pack Anti-Corrosive Primers
- 1 & 2 Pack Topcoats
- 1 Pack DTM Paint
- 1 Pack Staircase Paint
- Specialist Surface Finishes
- Interior Coatings
- Stencil Paints
- Touch Up Aerosols
- Sundries

Tel: 01978 661711 Email: sales@aquatecpaint.co.uk Web: www.aquatecpaint.co.uk



Service Sealing Solutions Ltd



Service Sealing Solutions are the sole UK distributor for pioneering the sealing industry's top manufacturers; DOYMA, FRANK and HKD.

Service Sealing Solutions are the sole UK distributor. Wherever services are installed through walls, ceilings or floors, penetrating water may cause damage to buildings. Lack of attention to the points of entry of pipes and cables into the building can have serious results: damp cellars, equipment damaged by water ingress and high repair costs.

Service sealing systems ensure professional and perfect pipe sealing, thus presenting excellent preventative measures against structural damage.

The very best in German engineering is used to seal penetration points at the wall to permanently prevent any infiltration of gases and water into the building, and the duct sealing systems are guaranteed for 25 years.



Tel 01952 510050
sales@servicesealingsolutions.co.uk
www.servicesealingsolutions.co.uk

App Site Services

Number One Tool Hire Specialist for Air and Hydraulic tools. If you're looking for solutions for your construction site, then call us today.

APP Site Services are a leading distributor of site supplies and services to the construction industry. One of our main focuses of the business is our hire and sales department for construction tools.

Here at APP Site Services, we provide an excellent service, not only with the range of

products but with the level of care each order is given and the speed with which we can deliver.

We have a range of [tools and associated products available to hire](#). Some of the tools we specialise in: [Rebar Cutters](#), [Rebar Benders](#), [Concrete Splitters](#), [Concrete Combi Shears](#) and [Pneumatic Picks](#).

Whatever your scenario we have an option for you...

For our full range of products visit our website or call the office on 01909 519 519. Most tools can be shipped next day and be hired for various lengths of time.

We are happy to help and support your business and look forward to hearing from you soon. APP Site Services is part of the APP Group.

Contact
www.appsiteservices.co.uk



SUNSHADE SERVICES LIMITED

- Thousands of Design Options Available
- Up to 100% Shade Cover & 100% UV Resistance
- Bumper Pads Fitted as Standard
- Designed, Manufactured & Fully Installed

Specialist all-weather outdoor structures & shelters

01782 398848 / 07807 063734

info@sunshadeservices.co.uk
www.sunshadeservices.co.uk

RP Associates is a global outsourced company specialising in **Procurement, Credit Control & Marketing**.

RP Associates provide a first class service, from consultation to facilitation, ensuring all clients' needs are met, sourced and delivered.

Our global network is on hand, ready to proceed.

Please email roger@rpassociates.eu

Associate Offices Located in USA, Japan and Estonia

Contact: roger@rpassociates.eu UK (London) +44 (0)207 206 7349
UK (Sussex) +44 (0)1825 791703 UAE (Dubai) 00 971 (0) 56 332 0803

Don't Let Limited Access Limit Your Options



The UK's rate of new home construction cannot keep pace with inner-city population growth. A new home built today would need to last 1000 years at current replacement rates. In addition, space restrictions in urban areas prevent housing developments where they are most needed. Without new housing, people in the UK must make the most of the existing housing stock.

The UK has experienced a rise in Outdoor Living trends over the last decade, as homeowners invest in maximising their plots. The COVID-19 pandemic exacerbated this trend, which saw the UK Landscape industry grow by 1.4% year on year between 2017 and 2022. Industry revenue is anticipated to rise by 5.2% in 2021-22 as trends continue.



How can homeowners in cramped, urban housing get in on the Outdoor Living trend?

Azpects Ltd offers a simple solution: EASYClickBase, a synthetic sub-base that significantly reduces the traditional 'dig-out' part of the installation process for patios, paths, and driveways. For example, early feedback shows that for a 50m² patio, EASYClickBase requires an excavation of around 2-4 tonnes and just 2-5 tonnes of a fine replacement aggregate depending on site conditions. Traditionally, this would require the excavation of 16 tonnes of waste by-products, and the import of 16-20 tonnes of traditional subbase aggregates, requiring either heavy machinery or a significant amount of labour.

Several early adopters of EASYClickBase have reported trimming day's labour from the expected completion time while giving clients the garden they have always wanted.

EASYClickBase is lightweight and easy to carry, making it easy to install even with restricted access. The reduced dig out makes wastage less of an issue for tight streets that lack space for a large skip, as smaller skip bags can be removed by a flatbed vehicle instead.

Manufactured from 100% recycled ABS plastic, any offcuts of EASYClickBase tiles can be recycled again, reducing waste and improving the sustainability of hard landscaping projects.

If lockdown taught us anything, it is how vital outdoor spaces are for our physical and mental wellbeing. With a significant percentage of the UK workforce expected to continue to work from home, it seems likely that investment in hard landscaping will only continue.

Find out more at www.azpects.co.uk.

In-Line pH Balancing For Concrete Washout Water!

Mobile Skid

Fully Automated

Continuous In-line Process

Low Operating Costs

Rugged Construction

Small Footprint

No Hazardous Chemicals



Smart Storm's Unique pH Balancing Unit!

Treats and Balances Highly Caustic Wastewater In-Line.

No Hazardous Chemicals, Just CO₂!

Available to Hire from

HYDRAINER

HYDRAINER

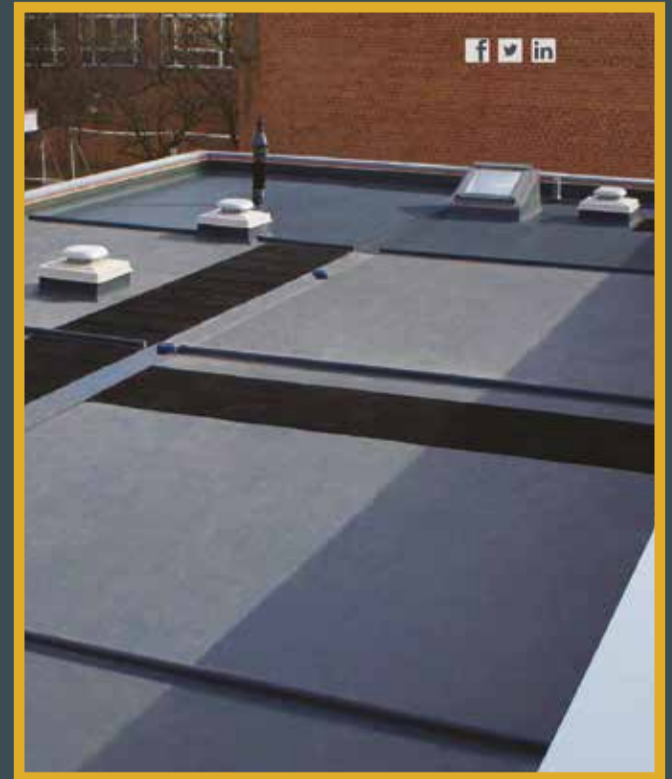
T: + 44 (0) 1142 484868
www.hydrainer.com

Smart Storm

T: + 44 (0) 1422 363462
www.smartstormgroup.com

'THE' SUBMERSIBLE PUMP COMPANY

Wastewater Solutions



FLEXIBLE GRP

Providing an exceptional combination of versatility and durability. Quick to lay, with no need to strip or re-deck a roof, this fast-curing system saves time and money.

It's a single-resin solution which can be applied to a multitude of surface types and structures including vertical sections.

With two coats applied within one hour, TuffStuff® Flexible GRP will form a highly flexible, extra tough and seamless waterproof membrane - can be a solution for areas of heavy duty foot traffic.



TUFF STUFF
FLEXIBLE
GRP



www.tuffstuff.co.uk

T 01977 680250
orders@tuffwaterproofing.co.uk