

Stand out from the crowd!



Tomorrow's Forests
See on page **03**



Ecomerchant
See on page **04**



Spiral UK
See on page **05**



Contour
See on page **06**



Cube Metals Ltd
See on page **07**



Vandecasteele Houtimport
See on page **12**



At Efendi Architectural, we provide a wide variety of digital services for a range of sectors.

Specialising in architectural film, photography and graphic design, we focus on 3 core sectors:

- ▲ Construction & Industrial
- ▲ Interior & Private Residential
- ▲ Hotel & Hospitality

Whether you require a brand video, short web commercial, photography to support editorial or a content rich print brochure, we can help provide exactly the right fit for your needs.

We place the same energy, time and care into all our projects to ensure you receive big budget results, without the heavy price tag.

- ▲ CONSTRUCTION FILM & PHOTOGRAPHY
- ▲ MANUFACTURING FILM & PHOTOGRAPHY
- ▲ CONSTRUCTION TIMELAPSE
- ▲ COMPLETE OR STAGED PROJECT COVERAGE
- ▲ SPECIALLY TAILORED LINKEDIN PROMOTIONAL PACKAGES
- ▲ BROCHURE DESIGN (PRINT & DIGITAL)

We are currently offering reduced rates on all drone and aerial photography booked in Q1 2022.

For more information:
info@efendiarchitectural.com
www.efendiarchitectural.com

Three Hauraton drainage systems installed at Margem Green Energy Biomass Plant



The Margem Green Energy Biomass Plant is a 40MW electricity power station utilising chipped wood waste as fuel otherwise destined for landfill. When fully operational the project will use around 300,000 tonnes of waste wood from nearby regions.

The plant is located on land off Harbour Way (A4241), near Margem in South Wales, in an area designated for commercial and industrial development. Built on a 3.98 hectares site the buildings are surrounded by a 6209m² (66,834ft²) concreted yard plus asphalt access roads and car park.

Hauraton supplied three types of channel to meet the rigorous specifications for surface drainage of the main concreted yard surrounding the plant, weighbridges and car park.

Three sizes of RECYFIX® HICAP® high capacity channels were installed in the yard. 3 metres of HICAP® 1000, 303 metres of HICAP® 2000 and 255 metre of HICAP® 3000. The total water capacity of the HICAP® channels was just

over 20,390 litres. By installing this system, the channel runs were kept to a minimum so saving on installation costs and future maintenance. Factory fitted with 14mm slotted ductile iron inlets, the channels comply with a loading Class of F900 so can easily take the weight of a HGV fully laden with wood chips. Importantly, once installed the complete system is highly resilient to the twisting forces imposed by the laden vehicles.

42 metres of FASERFIX® SUPER 150 channels with Class F900 ductile iron 20mm gratings were installed



around the two weighbridges. The FASERFIX® channel component is made from the company's Fibre Reinforced Concrete with galvanised steel angle housings moulded into the top edges of the channel during production. This specification is highly resistant to extreme loads and constant dynamic forces and was found to be ideal for the weighbridge application. The FASERFIX® gratings are secured by SIDE-LOCK® patented boltless system. The system allows gratings to be installed and later, removed quickly. Once a grating is positioned over the channel, foot pressure



is simply applied. A loud click is then heard which confirms it is securely locked onto the channel. The grating is removed using a large screwdriver inserted into a discreet leverage point. This feature is particularly useful where channels need to be cleaned out at regularly.

Finally, 39 metres of RECYFIX® PRO 100 Type 75mm factory fitted with FIBRETEC® heel-safe gratings were installed in the car park. The FIBRETEC® grating, moulded



from a fibre strengthened Polyamide (PA-GF) and allows loadings up to Class C250 (BSEN 1433)

All the RECYFIX® channel components specified for the project are made from 100% recycled Polypropylene (PP) derived from post consumer and post industrial sources.

Hauraton Project Manager, Cat Jones comments about the project, "We are pleased to have worked closely with the contractor, Interserve, on this large project. Working on a call of schedule with precise delivery dates we managed to ensure delivery's arrived on the specified dates. On site project management was essential to ensure the smooth running of this project"

For Case Study and other projects go to www.drainage-projects.co.uk

KTBCR384

KELLY TANKS

Dealing with waste water onsite?

We provide **CONCRETE WASHOUT AND WATER TREATMENT SOLUTIONS** so that you can easily re-use or safely discharge your onsite wastewater

01889 508944 KELLY TANKS

- SETTLE & RETAIN SOLIDS
- FLOCCULATION & LAMELLA
- NEUTRALISE & CONTROL PH
- REMOTELY MONITOR PH & TSS

CONCRETE WASHOUT SYSTEMS AVAILABLE FROM £55 P/WK



ENSURE COMPLIANCE
Remote pH & TSS monitoring and data logging units available for hire

www.kellytanks.co.uk
info@kellytanks.co.uk

Tomorrow's Forests is our Timber Build Company of the Year. Here's why everybody's talking about it

In this issue of Building and Construction Review, we have selected Tomorrow's Forests as our Timber Build Company of the Year.

"We are very proud to receive this award. It's a massive team effort, from our amazing planters, foremen and women, supervisors and office staff. They are all hard working and dedicated and we are very grateful to have them on board on our crazy journey. This award is a nice way to highlight everything they do and how it is being perceived out there," stated Elisabeth Boivin, Managing Director of Tomorrow's Forests

Encouraging biodiversity and sustainability, Tomorrow's Forests (TF) are experts at tree planting in the UK. Specialising in high volume commercial reforestation, Tomorrow's Forests is a longstanding provider of quality support services for industry, resource management, government, private landowners and public institutions.



On a mission to fight climate change by creating UK forests, the company provide the latest reforestation industry leading practices to the UK market. With state-of-the-art technology alongside UAV support, TF offer clients a full range of products from tree planting, vegetation management, UAV (Ariel Drone Services), eco logging, woodland surveys and land reclamation. Further to assisting in the planting of local trees, TF can also supply sundry products required for any woodland creation project. Following a woodland survey, TF will provide government guideline funding requirements throughout the process and offer ongoing maintenance, upkeep and professional advice. Benefits to woodland creation include the increase of timber production, the ability to provide a shelter for crops and livestock and new wildlife banks for habitats, an increase in land value and improved amenity value, alongside stabilising river banks and game cover.



We spoke with Elisabeth regarding the last 12 months, "It has been good and very busy. We launched Creating Tomorrow's Forests (CTF) back in September 2020 and both CTF and TF have grown their workforce, their contracts and their clients. CTF is now a UK finalist in the BUPA eco-Disruptive challenge which is a global initiative challenge which seeks to find industry leading start-ups in the sustainability sector while our TF operations have begun on September 25th, 2021, one its biggest forecasted planting season to date."



Earlier this year, CTF was the winner of the 'Biodiversity' challenge which looked at ways to increase, restore, or protect biodiversity around the world. In the programme, CTF worked with Bupa to create diverse new forests and habitats, encouraging people to engage with their local biodiversity and educating them to understand how to preserve it. 2021 has been a challenging yet rewarding year for the company as Elisabeth explained further, "We have had a boost of 30% more than expected on our TF side of the business which has put us in a great position to grow our CTF operations. Over the last two months, we have seen a noticeable rise in business partners joining our CTF venture. It shows a real interest in habitat creation, biodiversity and tree planting initiatives from UK businesses and private members."

Recently, there have been some operational changes with the TF team, with more team leaders and planting squads being added to the business. "Callum Tennant was promoted to Area Supervisor, Toby Brusey was promoted to business Operations Manager, Dr Simone Webber was promoted to



Senior Ecologist and Content Manager and Jaelee Marcotte was promoted to Operations Quality Supervisor," stated Elisabeth.

Further to recent changes, CTF will soon launch its Defra approved biodiversity units which will be a slight change on its approach to its current habitat creation sites. "In alignment with the new environmental bill for England, we will be offering (BU's) for sale to the construction industry. These will be measured by Defra's biodiversity metric. These will take place on parcels of land which will be protected by conservation covenants and should provide sustainable solutions for the modern-day construction industry," said Elisabeth.



The global pandemic due to COVID-19 has brought significant disruption to society and the environment. However, there has been an interest in sustainable living and more people have turned to a more economically friendly way of life as a result. Elisabeth explained how COVID-19 has affected the business, "If anything, we think there has been an increase in demand over the last 18 months for tree planting projects. The demand is also increasing the closer we get to COP26 and for a push for sustainable materials to be used in construction like timber. Our industry is in a good place at the moment, and we are set to grow and evolve with it."



As Elisabeth concluded, "As far as future plans go, short-term, we are at the start of an extremely busy planting season. We are making additional land purchases to run our new programs on BU and sustainability tree planting projects for businesses. We are always endeavouring to expand our client base in the UK. As for long-term, we are looking at starting overseas habitat creation operations and getting more of a global reach. Making sure our companies grow in a sustainable growth model."

For more information, see below:
 T 01258 818003
office@tomorrowsforests.com
www.tomorrowsforests.co.uk



Leaders in services, and health and safety for the piling industry

Situated in Glasgow, Burnside Plant Ltd is a piling contractor and a company that prides itself on achieving the very best in customer satisfaction. Through this ethos, the company has established a strong reputation for its outstanding services, among its portfolio of regular clientele based throughout the UK.

Utilising its dedicated and professional team, Burnside Plant maintains an impressive amount of experience and expertise, enabling the company



to be able to provide an understanding and flexible approach to its customer's requirements, while maintaining the highest levels of quality and safety.

"We provide a whole service including design, supply of materials and installation of sheet piles, tubular piles and provide hire or sales of the piles," said Shirley.

Burnside Plant provides sheet pile installation, cofferdam installation, king post installation, mini piling installation, tube installation, permanent and temporary design works, sheet pile hire and sale, Movax hire and haulage services, across the UK.

The company design, supplies and installs a vast amount of products including interlocking Larsen sheet piling retaining walls, for use in both temporary and permanent applications, king post systems, to meet UK standards and its customers particular specifications, and provides

various methods of mini piling. Burnside Plant also maintains its own haulage for delivery and collection of sheet piles and all plant hire.

Shirley added, "We complete the whole scope of the job. Our customer base can be quite varied, clients can range from civil work to everyday householder's requiring foundation piling for doing an extension."

One of the main aspects of the company's services is its commitment to health and safety.

Shirley stated, "We are Constructionline gold accredited, which means that we uphold high standards of health and safety, including online health and safety for our team. We are fully accredited and we have also taken out other health and safety precautions, including height restrictors on our machines and dead man switches, in case of an emergency. We have adopted various health and safety practices, as we understand that this is a dangerous industry and we have taken all the necessary precautions to ensure that everyone from our employees to anyone around, is kept safe."

As the company looks ahead, Burnside Plant is proud of what it has achieved so far and has experienced consistent growth. Moving forward, the company plans to continue to expand, and gain further confidence from its clients, knowing that their health and safety is of paramount importance to Burnside Plant.

"To be able to receive Constructionline gold, shows to our customers that we are a responsible

company, doing everything we can to ensure safety." Shirley continued, "We are a small company, so we are very proud of it. We feel this is why our customers speak so highly of our services and often recommend us to others."

For more information, please see below:

T 01416 479331

M 07787 575418

www.burnsideplant.co.uk



Adopt a healthy way of constructing with proven best performance



Eco house, a prefabricated timber frame system supplemented with external wood fibre insulation. The design combines traditional elements with use of modern features sympathetic to its surroundings. Glazing was carefully orientated to maximise passive solar gain and natural daylight. A small air source heat pump was installed along with a solar hot water system.

Ecomerchant was established in 1998 and is a builder's merchant which provides a broad range of products and materials that are sustainable and natural.

Using natural, sustainable building materials is not a new notion nor a specialism reserved for a niche market. The use of natural sustainable materials has been commonplace in all types of construction for centuries, think of timber or lime for example. However, as the last century progressed this practice, has been lost, replaced with a culture of using petro chemical and synthetic products based on mass production, convenience and price. Breaking this culture is a challenge, but by developing a responsible modern way of building using natural products we can offer carbon friendly low impact buildings that are durable, long lasting and comfortable for the occupants whilst reducing our carbon footprint.

Ecomerchant is passionate about educating the industry, on being responsible when sourcing the materials and trading ethically. The company is a driving force toward using natural alternatives instead of synthetic building materials and provides a range of over 2,000 product lines that consist of some of the top brands, which deliver a cost effective, high performance and efficiency.

"We are a supplier to anybody that wants to alter the

way we affect ourselves and the planet. Anything you do to change the environment around you, whether that's building a patio, extension or a school, then we have a sustainable product for that process," stated Will Kirkman, Managing Director.

Will continued, "The construction sector is being driven by global factors, focus is moving towards a more sustainable low carbon, energy efficient way of building. The built environment is a major contributor to our carbon emissions; it is notoriously slow to deliver change but must do so in order for us to meet our targets. Too much of what is being built today will require upgrading in a few years this is because there is a tendency in the UK to build to the minimum standard, i.e. to building regulations but if the standards are not fit for purpose then the buildings won't be either, and they are not.

Despite this, there are thousands of great examples of new builds and retrofit projects constructed using natural sustainable materials built to standards way above current regulations that outperform traditionally constructed buildings often at a similar price or for a small premium. This shows us a way we can move forward to create energy efficient carbon friendly homes right now."



Family house built with naturally insulated passive panels (NIPPs) constructed to passive levels of airtightness and energy efficiency, the complete construction is made using natural and sustainable materials. Image courtesy of Kithurst Builders.



Steico wood fibre insulation. Woodfibre can be supplied as flexible batts or rigid boards. Flexible batts offer thermal performance equal to mineral wool but with a better carbon footprint plus no voc's toxins or off gassing and no disposal issues. Dense wood fibre boards can be used as sarking or sheathing or as a plaster or render carrying board for external or internal insulation.

A recent noteworthy development for the company is Ecomerchant's collaboration with Herschel, a supplier of infrared heaters.

Will explained, "a few years ago, there was a real push towards using wood burners as responsible form of heating, i.e. replacing fossil fuels with biomass. However, it was realised that there were better renewable sources

of heat than wood burning (a valuable carbon store) also considerable evidence was published that the smoke and emissions generated were seriously detrimental to the environment. As biomass fades in popularity, we wanted to find a cleaner low energy heating option which is why we chose Herschel's infrared panels. Infrared panels heat objects instead of air they are adaptable, easy to control and can be powered by solar panels or through a green energy tariff. With the imminent huge rise in energy costs, electric heating has considerable attractions, we see great potential in infrared for occupant comfort, building health, energy efficiency and reducing carbon."



The COP 26 House co-sponsored by Ecomerchant and built for the Glasgow COP is an all-timber construction with no steel, concrete or plastics used in its construction. Insulation is Steico wood fibre, heating by Herschel infrared panels. The COP26 House beats the RIBA 2030 Challenge carbon target by a substantial 22%

Ecomerchant is an employee owned business with a charitable foundation, La Renaissance as a shareholder. Being employee led enables the company to focus beyond making money for shareholders and instead, focus toward the triple bottom line. Will explained, "Being an independent employee owned business, really colours the way we think we are not only thinking about profit. We use the triple bottom line, which is a way of expressing how we behave in terms of performance where financial, social and environmental outcomes are equally considered"

For more information, please see below.

T +44 (0)1793 847 444

www.ecomerchant.co.uk

Bespoke staircases

Since 1985, Spiral UK has established itself as the UK's leading specialist staircase manufacturer. Originally set up to produce concrete spiral staircases, the company's depth of knowledge, expertise and experience in spiral staircase design and spiral staircase installation has since expanded into other forms of bespoke staircases using materials such as steel, glass, wood and stone.



Founded by father and son Buzz and Eric Nicholls, the employment of CEO Andrew Holland in 2015 became a landmark in the vast growth of the business. Today, Eric is front of house managing sales and still shares his expertise directly with clients, whilst Andrew runs the operations.

The Cornwall based bespoke staircase specialists believe in delivering a totally bespoke service that is people-based as well as product based. "We try to keep everything in house, so we have full control over the process to ensure there are no unnecessary delays or unexpected obstacles," said Eric. Offering an unrivalled service with years of experience and expertise under its belt, Spiral UK is happy to work with seasoned



professionals as well as first time buyers looking to build their dream home. Its hands on approach ensures each customer's requirements are met, and individual designs exceed initial expectations.

However, Spiral UK doesn't just do spirals. Everything from the initial quote to the design, manufacture and installation can be completely customisable and tailored to any requirement. With over 30 years' experience in the industry offering unrivalled expertise, Spiral UK can cater to any project across a range of spaces from restaurants, shops, museums, schools and more.

"Our expertise and experience allow for even the trickiest of designs and we ensure each design is fully compliant with UK building regulations. Our design engineers have the capabilities to design, manufacture and install any less-than-straightforward staircase that requires a little more thought and skilled engineering such as steel, glass or concrete spirals, helicals, curved, dog-leg, floating and cantilever," stated Eric.



Spiral UK's services stretch nationwide and are available online or in person. If a face-to-face meeting is not possible, Spiral UK can organise a bespoke staircase CPD service online at the company's convenience. Conducted via presentation through Zoom, Microsoft Teams or Google platforms, "we exclusively offer a free service that explains our bespoke stair designs, building regulations, and manufacturing and installation processes," said Eric.

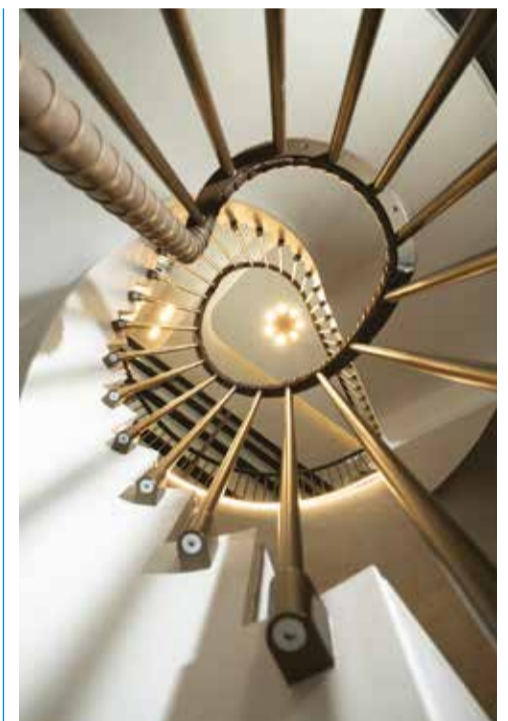
Over the years, Spiral UK has grown alongside its customer base and now operates in four distinctly separate markets,



as Katie Chown Marketing Manager explained. "We design, manufacture and install bespoke luxury staircases for four main audiences. We create centrepiece stairs for domestic properties, these can be refurbishments or new builds and made from steel, concrete, clad or almost any material the budget allows for. Our designs include anything from simple handrails to full curved glass balustrading. The main bulk of our clients are construction companies and fit out interior designers. For these clients, we are usually employed to create large- and small-scale stairs for all manner of commercial applications from office refits to grand stadium projects - we're currently working on projects for the new Swansea Arena and The Royal Albert Hall. Lastly, we have vast specialist experience of creating compliant external fire escapes for all applications and have worked a lot for the MoD on their accommodation blocks on base."

In recent developments, Spiral UK has introduced QStairs which alongside Spiral UK, is a separate online company set up to cater for high quality 'off-the-shelf' options. QStairs is essentially a self-install stair kit that offers a cost-effective alternative to using a bespoke staircase service. "QStairs are designed to be fitted by the purchaser/ their builder. We have used our many years of experience and expertise from our inhouse designers to come up with a millimetre perfect ordering system for a kit of parts to build your own galvanised or powder coated spiral staircase up to four metres high," said Katie. QStairs gives customers in the building trade the option to purchase the same high quality produced by Spiral UK but at a more affordable price. Offering a straightforward installation process and a finished product that is robust and durable, further designs are already in the pipeline as it sets out to be a revolutionary product within the industry.

With future plans to heavily invest in the marketing and development of QStairs, Spiral UK is taking each step at a time to ensure a continuous steady growth. With the current economy being difficult to navigate, Spiral UK's approach to continued success is measured and tactical. "We were lucky that construction continued during COVID-19 but that's not to say that things didn't get difficult.



Commercial contract opportunities slowed, and competition increased, however, we're in a good position to continue our usual high standards for the foreseeable," stated Katie.

Spiral UK has an abundance of knowledge and expertise at its fingertips, from design engineers, time-served steel craftsmen to experienced teams of fitters that are trained to deliver a full in-house design, manufacture and installation service. With bespoke staircase designs, materials and finishes readily available, see below to find out more.

Contact
T 0330 123 2447
info@spiral.uk.com
www.spiral.uk.com



Contour heating solutions



In 2003, after discovering the anti-microbial properties of silver, joint founder Leigh Simpson had an idea that would potentially relieve the growing problem of hospital acquired infections caused by antibiotic resistant bacteria. Leigh knew that if he used the same anti-microbial technology found in silver on the surface of low surface temperature radiator guards and LST radiators it could have the potential to not only create better hygiene in the healthcare market, but to save millions of pounds for the NHS every year.

After approaching BioCote®, a market leading antimicrobial technology supplier who at the time had recently developed a new powder coating which included silver and was proven to reduce bacteria by up to 99.9%, a long-standing relationship was born between them. Contour is currently the exclusive licensee of this technology for LST and anti-ligature radiators and guards in the UK.

Based in the West Midlands, Contour's services spread nationwide. Through its exclusive two main product lines: Low surface temperature and anti-ligature, Contour provides safe heating solutions for both the private and public sectors. "We provide a vast range of radiator guards, light switch covers and pipe boxing, essentially everything that can help protect people in environments such as hospitals, mental health units, schools, nurseries, care homes and more. The healthcare industry is a huge portion to what we do in providing safer heating solutions to NHS hospitals and trusts," stated Robin Mansell, Contour's Commercial Director.

As specialists in low surface temperature radiator technology, Contour design, manufacture and install an extensive range of innovative fabricated building solutions. This service is supported by Contour's passion and philosophy to always put the customer first, ensuring them that each product is made in Britain.



There are many unrivalled benefits to Contour's product range, all of which are applicable and relevant to a number of sectors. Robin mentioned some key notes, "we are the only radiator cover company that can fully lower the guard flat to the floor without the need to take the door off. Furthermore, we are also the only radiator cover manufacturer that can prove we reduce levels of bacteria on our covers by over 97%. Our anti-microbial partner BioCote® carry out regular testing of our coatings to ensure the process is still up to standard and is still effective."

One of Contour's notable new ranges is the new Covora Lite range. Manufactured in the UK Covora Lite is a cost-effective LST radiator suited for classrooms and student accommodation refurbishments. Available with BioCote® coating as standard for

complete antimicrobial protection and comes in over 200 sizes across single convector, double panel plus and double convector emitter models. Fitted with bullnose corners and half bullnose edges on the cover increases the products strength and reduces the risk of injury in the event of a fall against the cover.

The Covora Lite has a much faster lead time than other Contour products and is easy to use with an external TRV head for remote adjustment. The radiator cover is polyester powder coated to an average thickness of 60 microns internally and



externally and comes in RAL 9003 white as standard. The radiator cover is also supplied as a one-piece unit complete with prefabricated cut-outs for external valve heads.

The overall design is aesthetically pleasing and more robust than its predecessors from the strengthening ridges on the front of the cover. As the ventilation grilles are narrow, they are therefore easier to clean and maintain, stopping objects such as pencils and small items from being inserted through the grilles causing potential damage. Manufactured from 1.2mm Zintec steel, they are available in a wide range of RAL colours allowing them

range alongside its newly published 2022 product brochure containing over 100 pages of LST and anti-ligature products.

Offering complete versatility across a number of environments, Contour products can be installed across all sectors. With the recent effect of COVID-19 putting increasing pressure on the NHS and the entire healthcare sector, it has naturally caused people to consider hygiene in a different way. "All our radiator and guard products contain a technology called BioCote® in the coating. This technology combats harmful microbes



such as E. coli and MRSA. This became hugely beneficial to many customers during and following COVID-19," said Robin.

With many successful years behind it and many more ahead, Robin explained what further products are on the horizon, "as well as our new Covora Lite range, we are also launching a new range of free standing and bench radiators which are suited to office buildings and can even be used in more of a domestic setting. We will continue using our innovative technology to create and add new heating products to our portfolio, and as demand grows, we plan to also build our sales team to better serve our customers."



to seamlessly blend into the design of any environment. The Covora Lite range is set to be extremely popular, combining the expertise and industry leading technology of both Contour and BioCote® for the most affordable safer heating solution. Contour is soon to begin marketing the new

T 01952 290498
sales@contourheating.co.uk
www.contourheating.co.uk

New machinery improves productivity for Cube Metals Ltd

Cube Metals Ltd has been established specialists in structural, architectural and bespoke metalwork since 2017. Daniel Duncan and Peter Wrobel who are founders of the company hold a vast amount of professional expertise and demonstrated history of working in the structural and architectural metalwork fabrication industry. Collaboratively, their vision is to bring the very best fabrication technology to the construction industry, and that is why Cube Metals Ltd thrive off unique and challenging projects that are designed to stretch the conventions of architectural construction.



"We provide structural steel and metalwork solutions to the construction industry. Many of our clients have come to us because they are looking for a service to which our competitors cannot meet their specific needs. We pride ourselves in our diverse and flexible service, as we can offer unique and versatile solutions to the construction industry through our incredibly talented structural engineers," stated Daniel.

The company's distinctive, state of the art facility is currently based in Uxbridge but once its new facility in Hitchin - due to complete in July 2022, has been built, it will move premises which will see a marked improvement of its services and operations for both its clients and employees. Alongside its primary operations, Cube Metals Ltd also has two growing sister companies in the UK: Coda Products Ltd and Acura Structural Consultants Ltd. Coda Products Ltd is a buildings and construction product manufacturer that specialises in 'off the shelf' and bespoke cavity tray system, designing and engineering cavity trays to fit client requirements.

Acura Structural Consultants Ltd is a firm of structural engineers that provide a structural design calculation service for home owners and commercial property owners specialising in providing structural analysis and design, GA drawings, in structural steel industry as well as in concrete. Both companies reflect the high-quality expertise and skills to which its main engineers behold.

With the initial wealth of knowledge and industry experience to which Daniel, Peter and their team bring to the company, Cube Metals Ltd has established itself as



a trusted company within the construction industry. Offering a full range of services including Architectural Metalwork, Structural Steelwork, Agricultural Fabrication, General Metalwork, Cast Iron Restoration, and Laser Cutting, Cube Metals Ltd is one of the few companies in its sector to offer such a versatile complete range of expert services. Combining the use of comprehensive machinery, experienced technical team and quality systems, Cube Metals Ltd fabrication process becomes defect-free that results in a low cost with minimal room for error.

"We are constantly improving our service by upscaling our procedures and equipment. The main benefits of our services are that we offer a fast turnaround, our teams are highly responsive, we have our own inhouse design and engineering team, and we offer a versatile service meaning we can serve clients from almost any market," said Daniel.

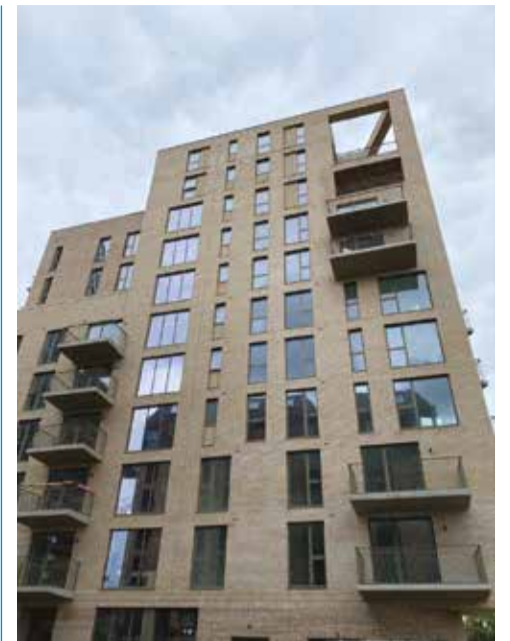
Cube Metals Ltd is consistent in following the latest developments in steel



processing and improving its machinery alongside educating all staff to the highest level possible.

Recently, Cube Metals Ltd has purchased a new piece of machinery, a 12kw Bodor laser. Bodor Laser is one of the industries finest Fiber Laser Cutting Machine manufacturers and is the number one choice for structural and architectural metalwork fabricators alike. "We are extremely happy with our latest purchase as it will help improve our overall range and quality of service to our customers. No matter how complex a problem, with machinery such as this in our portfolio, we are able to offer a solution to almost any issue," stated Daniel.

Maintaining the very best in customer



service, Cube Metals Ltd has a team of highly skilled personnel in design, engineering, science and machine technology. Its expert engineers and fully operational state of the art workshop pay homage to the company's acutely professional and bespoke metalwork services that can be used for but not limited to precision engineering, cold and hot rolled steel, 2D and 3D design, welding, bending and computerised profile cutting.

"As we look to the future, we are continually looking to improve our performance capabilities. By moving locations we believe our new facility will enable us to improve the speed and quality of our production process whilst having a positive effect on business.



As we look to further expand within the construction industry and further understand the needs of our clients, we never want to settle; the goal is to always be growing. Ultimately, alongside our two sister companies, we believe we have the capabilities to offer the industries finest services on all levels and platforms available to us. The goal is to create a relationship with our clients where they feel supported. We are always on the client's side and are consistently pushing to learn and grow our processes to better support them and their needs," said Daniel.

For more information, see below.

T 020 3750 5555
www.cubemetals.co.uk

ACCON UK

ENVIRONMENTAL CONSULTANTS



We are one of the UK's leading niche environmental consultancies, specialising in air quality, noise, vibration, lighting, flood risk assessment, contaminated land, daylight & sunlight assessment and Environmental Impact Assessment (EIA). Our standards of EIAs, technical reports and planning proposals ensure you get the most robust and reliable results. ACCON UK's wealth of experience and efficiency enable us to produce cost-effective air quality, noise and EIA reports for our clients. We maintain a wide range of noise, vibration and air pollutant measurement equipment to ensure the very best outcomes for our clients.

We offer focused solutions for all our clients provided by our team of experts, all of whom are specialist environmental assessment consultants and are up-to-date with the most relevant and latest revisions to the planning system.

Contact ACCON UK today to discuss your individual requirements with one of our consultants.

Our range of sector expertise includes:

- Major Infrastructure Projects
- Transportation – Road, Air and Rail
- Residential and Commercial Development
- Sports Stadia and Recreational Facilities
- Industrial
- Energy and Wind Farm Developments
- Mining and Quarrying
- Petro-chemical

Tel: + 44 (0)118 971 0000
enquiry@accon-uk.com
www.accon-uk.com

Compact and powerful stump grinders from Predator

Predator is an industry leading supplier of high performance, narrow access tree stump grinders, which was established in 2003. The company's founders were originally working in the tree care industry, offering tree stump removal to their clients. Back then, stump grinders were often large wheeled or tracked machines. The machines were frequently built in the US where they have plenty of space to manoeuvre their machinery. In the UK, back gardens tend to provide difficult access, which creates a struggle for arborists attempting to get their stump grinding machinery into a back garden.

"The founders were used to this same problem, and saw a need in the market for a compact tree stump grinder that are powerful enough for commercial stump removal on large sites, but also compact and narrow, to be able to get through the tight garden gates of the UK. The first Predator stump grinders built were the narrow tracked 28X, which were only 26 inches wide and therefore able to get through any garden gate, but with a 28 horsepower diesel engine and deep grinding depth, they could handle nearly any size stump," said Simon Bradshaw, Predator Sales.



From its location in Henley on Thames in Oxfordshire, and its 30 dealer and service centre locations around the UK and globally located dealers in North America, New Zealand and Australia; Predator supplies cutting edge, tree stump removal tools for Arboriculture



professionals, Plant Hire firms, Local authorities and Contractors worldwide.

"We are the only tree stump grinder company that focuses exclusively on the design and supply of narrow access stump removal machinery, making us the best choice on the market for companies and individuals in the UK, where difficult access to the stump is the norm. We offer a comprehensive, affordable range of stump grinders, from portable tools you can carry, all the way to more powerful radio controlled tracked machines," added Simon.

One of the most remarkable machines within Predator's range is its best seller; the Predator 38RX. The Predator 38RX is a radio controlled, tracked machine which is 26 inches wide and maintains an impressive 38 horsepower. Specifically designed to provide narrow access and high productivity, the Predator 38X is able to handle tough access stumps located in places such as back gardens and rough terrain commercial sites.



"We have now upgraded the unit with a dozer blade and tow bar. Making it the narrowest machine on the market for its power and performance. It will now grind 22 inches deep, almost twice the depth of the closest competing machine," stated Simon.

The Predator 38RX has been designed to meet the ever toughening regulations, and as such, the noise levels are extremely low and the machine utilises

its refined fuel injected Kohler EFI engine, resulting in minimal vibration. The Predator 38RX is a highly productive and innovate machine, providing an easy to use, low maintenance and compact solution.



In terms of recent developments, Predator saw an increase during the pandemic in response to people taking on more garden, commercial, construction and landscaping projects. Simon explained that, "Our dealer network is constantly growing, prior to the dealer network being launched in 2018, we were selling direct to customers. Now it is far more convenient to buy and service Predators' as there is often a dealer or service centre on their doorstep. It has made it more important to forecast required components, parts and stock requirements to keep up with demand. Though the COVID-19 situation made manufacturing very challenging, with component delays, the Arboriculture industry was also incredibly busy in 2020."

Predator maintains that it will continue to look at new ways to improve upon its machinery and strives to always provide new solutions to make its machinery more compact, with increased power and performance.

For more information, please see below.
T 01189 404929
www.predator-mfg.com



With over 30 years experience, we offer bespoke solutions for the domestic market across the South East. Feasibility can usually be determined upon receipt of a site postcode.

WATER SUPPLY & SOAKAWAY BOREHOLES DRAINAGE SOLUTIONS WATER TREATMENT



Independent water supplies can be used for irrigation or consumption*.

Soakaways, drainage fields and other drainage solutions.

*subject to analysis and suitable filtration / treatment

RENEWABLE HEATING

Reduce heating bills by up to 50%.

Groundwater can be used as a heat source for an Open-Loop Ground Source Heat Pump which could meet all hot water and heating requirements.



SEWAGE TREATMENT SYSTEMS

Our bespoke systems are designed to meet the needs of individual clients and comply with strict discharge legislation.

Servicing contracts are offered for all our installations.



enquiries@thehdgroup.co.uk | 01494 792000 | www.hdservicesltd.co.uk

Welcome back Matt



GEZE UK is delighted to welcome back Matt Gregory as Specification Manager for the north.

Matt will be responsible for assisting architects and specifiers with compliant solutions for all products in the GEZE range which includes automatic doors, window technology and manual overhead door controls.

In addition, he will produce detailed and risk assessed NBS specifications which are supported with BIM objects and present GEZE's RIBA approved CPD to help architects and specifiers expand their knowledge.

Matt first joined GEZE in 2017 and after a spell outside the industry he returns to the company bringing with him extensive knowledge of entrance systems and automatic doors from his time as Automatic and Industrial door engineer and previous sales management experience.

Said Matt 'I am pleased to be back working with GEZE and their respected and varied product range, they have a strong brand and excellent reputation in the door industry. I look forward to working closely with architects and specifiers, creating strong collaborations with them and providing a quality service.'

Richard Richardson-Derry, National Specification Manager added 'It's great to be working with Matt again, he brings enthusiasm and extensive experience to the team. He will be an important part of the company's continued growth.'

For more information about GEZE UK's comprehensive range of automatic and manual door and window control products visit www.geze.co.uk

GP Plastering Ltd

GP Plastering Ltd have been supplying plastering services for over 25 years in a nationwide compacity.

We specialise in Airless Spray Plaster Systems in the Healthcare and Educational sectors. As well as traditional to the domestic & commercial sectors.

We have a proven track record of delivery to budget and schedule on multiple projects and pride ourselves

on being able to blend into any site environment.

We have successfully handed over 64'000M2 this year

Please feel free to contact me personally on the details below. With any enquiries or questions.

T 07432 105988
tony.emmins@gpplastering.com
www.GPPlastering.com



FLAT FLOORS FAST



When you need a smooth and level finish to your concrete floors, there is only one choice.

With a choice of 110v and 240v high powered motors, the C43 floorsander is equipped to deal with the toughest of challenges. And with a full range of accessories and discs available, it's also versatile - tackling jobs such as:

- Diamond grinding
- Removal of adhesive
- Cutting back old concrete
- Latex smoothing
- Providing a key on power floated concrete
- Light cleaning to heavy dirt



Despite the C43's power and flexibility, at just 35kg it can be lifted and operated by just one person.



T: 01482 620400
E: info@stonegatetooling.co.uk
www.stonegatetooling.com



GP Plastering Ltd Machine Plastering Contractors

Tel: 07432105988
 Email: tony.emmins@gpplastering.com
 Web: www.GPPlastering.com



With 20 years of experience within the commercial industry mostly within the Health Care and Education sector. GP Plastering prides itself on completing projects within time and on budget.

Airless spray plaster systems are fast becoming the application of choice within the plastering world. It is being requested in favour more than traditional plastering by most of our main contractors. The system reduces labour on-site by 75% with 1% waste. The material comes pre-mixed so there is no need for water and reduces dust by 90%. There is no visible scarring with patching. The product is white in colour so it gives the feeling of areas being finished.

"Whilst constructing a new 72 bed hospital on behalf of Wye Valley Trust in Hereford, with a construction value of over £13 million under a NEC 3 contract. I had the pleasure of having GP Plastering on site as the plastering contractor. Traditional plastering can be wet, messy and labour intensive. Slow drying with issues over the standard of finish/quality. What first struck me was how fast a small team performed. I was equally impressed with the quality of work this small team could get through and the of workmanship was excellent. The manner in the way Tony operated on site was helpful, professional and worked extremely well within the construction team and health and safety was paramount and was never compromised. I would without doubt have them on any projects going forward and would recommend GP Plastering without question."



- Ian Rodgers, FCI0B

ONSITE FLOORING LTD

Flooring repairs, Replacement & Installation

Onsite Flooring Ltd offer a wide range of flooring services for commercial and retail properties. We make it our aim to deliver a first class service, ensuring that all work is completed on time and to the highest of standards.

We are a time-served, local flooring company, with the ability to work to your exact budget and requirements. With a huge range of flooring available and quality fitters ready to install your new flooring, we're the perfect one stop shop for all of your flooring needs.

From the simple jobs, like basic repairs and installations, to more extensive projects such as a full shop floor replacement, we have the skills and experience to meet your requirements



Unit 23, Mid Wynd, Dundee DD1 4JG

01382 220260
onsiteflooring@tiscali.co.uk

Thermafleece British sheep's wool Insulation

The perfect, safe insulation for lofts, walls, floors and roofs.

Thermafleece is a versatile, wool rich, natural and breathable insulation which is safe to touch and healthy to live with. A durable insulation which does much more than just prevent heat loss and save energy within the building, Thermafleece also plays a key part with other aspects of building performance. These include the ability to help maintain a healthy moisture balance, improve acoustic performance and help to provide a healthy indoor air quality.

Made from the Wool of hardy British Hill Sheep and manufactured in Yorkshire, Thermafleece is available as a roll or a batt in a variety of widths and thicknesses and designed to be installed by either the home-owner or professional, making it the ideal natural insulation choice for traditional and modern buildings and homes.

Contact
T 017684 86285
enquiries@thermafleece.com
www.thermafleece.com



SK
SIGNATURE KAURI

THOUSANDS OF YEARS
 IN THE MAKING

Sustainable furniture with a genuine story behind each piece - all of our tables are made from trees which fell naturally over 3,000 years ago.

PREMIUM BESPOKE TABLES
 HANDMADE FROM ANCIENT KAURI

signaturekauri.com

43" or 55" Ultra High Brightness LCD Double Sided Hanging Window Display

- 3,500cd/m² & 1,000cd/m² Double-Sided
- Freestanding Version
- Smart Temperature Control
- Integrated Android Media Player
- Plug and Play
- Network Upgrade
- 24/7 Commercial Use
- 3-Year Warranty
- Lifetime Tech Support

DISPLAY 365
 0203 302 3022

sales@display365.co.uk
www.display365.co.uk

Introducing Golden Hour Wine



Project: Golden Wine Hour
Product: Neutro Chevron HW16603
Architect: GDP Design Build

Taking its inspiration from early 20th century Paris is the stunning Golden Hour wine shop. Capturing the unique charm of Parisian boutiques, this elegant space sells an array of sustainable wines from across the globe.

To create a space that exudes effortless style along with maximizing the sense of lightness, Hawwoods was selected to supply a stunning wood floor solution for this neighbourhood wine shop in Florida.

Neutro Chevron from Hawwoods is paired alongside lush soft green walls to create a retail space that evokes warmth and familiarity with its light wood hues and chevron design. To further accentuate the warm tones of the wood, bespoke fittings and furniture have been selected that perfectly complement the parquet floor. The final touches to this raw and textured material palette include polished brass, polished marble and cotton twill all which help to bring the space to life without detracting from the natural beauty of the wood. With the help of Hawwoods, this one-of-a-kind space has been transformed to create an inviting space with a hint of Parisian charm.

info@hawwoods.com
www.hawwoods.com/uk



BCR0202

HARTWELL
 INTERIOR DECORATORS LTD

Heritage and Luxury Residential Specialists using Traditional Methods with a Modern Approach

London 0203 553 1262
www.hartwellinteriors.com

BUILDER'S PROFILE **CHAS** **Constructionline SILVER MEMBER**

Vandecasteele Houtimport's No.1 Objective – 100% Certified Timbers From 2025 Onwards



VANDECASTEELE
H O U T I M P O R T

1883

A family-run timber company Vandecasteele Houtimport, founded in Belgium in 1883, is today run by the fourth and fifth generations of the Vandecasteele family.

A modern and expanding business, it has a long-term commitment to service a wide variety of customers in the construction, joinery, cladding and furniture sectors, as well as the high-end marine industry.

Located right in the heart of Europe, with easy road access to customers in all European markets, Vandecasteele Houtimport has over the years consistently developed its long-term strategy to become Europe's number one timber stockist.



150,000

The company boasts its own storage facility that can accommodate more than 150,000m3 of sawn timber products. The total covered space of the company's main warehouse reaches 16 Hectares, implanted in a site of 60 hectares. Timbers coming from all over the world are centralised in one location, only a stone's throw away.

Based in Aalbeke, Belgium, Vandecasteele Houtimport's uniquely designed timber warehouse, which lies adjacent to a man-made lake, houses almost every wood species from around the world. From the most expensive and rare hardwoods,

to a full assortment of softwoods in all qualities and sizes, everything is neatly bar coded and displayed.

130

Over 130 timber species are in stock including the new addition of certified European Oak in Joinery, Prime and Super Prime grades and certified steamed Beech in all qualities.

Vandecasteele Houtimport has the resources and ability to adapt to the sensitivity of the market and bridge the gap between sources of supply in Africa, Far East, South America and North America to Europe in a matter of days. This makes the company the first choice with many importers and merchants.



2025

CERTIFIED timbers: Its impressive and vast stockholding of hardwoods and softwoods is coupled with strong environmental credentials (FSC®, PEFC, OLB, LegalSourceTM, ...) and an efficient, accurate processing of customer orders. The company has set a challenging goal to trade in 100% certified timbers only from 2025.

Experienced staff unload incoming lorries and prepare outgoing deliveries and all parcels have a quality file in which the quality of the parcel is registered, with quality control inspections of goods at the ports of Antwerp or Ghent or in Aalbeke.

E-commerce

The company has launched a dedicated customer portal which allows customers to order their timber online. In a world where consumers seek instant response to any "search", Vandecasteele Houtimport's sales representatives have quick to real time information on all inventory moves from all over the world.

Constant development of the necessary IT tools to support this demand for speed in sales, is as important for the company as is having the goods in stock.

Deliveries are followed in real time via live GPS lorry tracking, so an immediate response can also be given on the whereabouts of each load.

The company is investing in new IT tools to track and trace the timber from source and insure the provenance of the timber is EUTR compliant.

In 2021 Vandecasteele Houtimport has Invested in 17 new VOLVO trucks with Volvo Connect tracking system, 5 new side loaders of which

with the integration of the 17 United Nations Sustainability Goals.

This year, Vandecasteele Houtimport has achieved the Charter for the 20th time in a row which makes Vandecasteele one of the few laureates who participated for 20 consecutive years and successfully completed the trajectory.

1

All the initiatives are linked to the 17 sustainable development goals of the United Nations. A good annual assessment ultimately yields an annual certificate of the Voka Sustainable Business Charter.

When the final balance is positive after three years, and companies have elaborated at least one action in each SDG, companies receive the internationally recognized Unitar-SDG Pioneer certificate.

Vandecasteele Houtimport is one of the first timber companies in the world to have obtained the Unitar- SDG Pioneer Award!

138

With a strong foundation of more than 135

1 full electric and 10 new trailers. The racking system has also been extended which will now reach 5 miles.

20

Since the year 2000 Vandecasteele Houtimport has committed itself through the Corporate Sustainability Charter by signing up to environmental objectives exceeding applicable environmental legislation.

The Charter has evolved over the years from the Environmental Charter, over the Sustainable Entrepreneurship Charter (2008) to the Voka Sustainable Entrepreneurship Charter (2018)

years of trading in wood and family values that govern its relationship with customers and suppliers, coupled with continuous investment to ensure success in the years to come, Vandecasteele Houtimport looks to the future with confidence.

Contact
www.vandecasteele.be



Eco Clipper FM4 Sport for sporting grounds

Eco Clipper, known for electric mowers for the turf industry, has introduced a special version for the maintenance of sports and recreational grounds. The 4.11 m wide front mower features four independent cutting decks. For the FM4 Sport, the side decks can be folded in independently, allowing for narrow passages to be mowed.

The smooth decks with fast rotating small blades ensure a high quality cut and good clippings dispersion. The clippings are also spread well in wet grass. This makes it possible to schedule this mower almost independently of the weather.

The Eco Clipper mowers are further distinguished by the high

possible mowing speed. This means that on average a sports field can be mowed in less than fifteen minutes with an Eco Clipper FM4 Sport.

To operate the mower a 40 HP tractor is already sufficient. The electricity to drive the mower is generated by a PTO driven generator. For larger tractors, the generator can be fitted on the front mower. For smaller tractors and optimized weight balance Eco Clipper offers a separate generator unit for behind the tractor.

info@vanmac.co.uk
www.ecoclipper.com



'Dedicated to offer the best mowing system for maintaining large area turfgrass'

Eco Clipper FM4 Sport for sporting grounds
www.ecoclipper.com

ECO CLIPPER

SAF Woodland Management

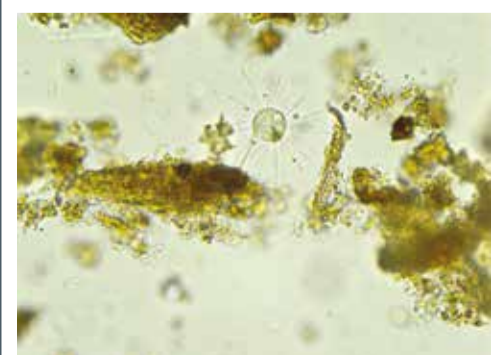


In the 1960s Maureen Iddon was a pioneer of the post war era. Her decision to start a plant nursery, earned her a reputation in growing and breeding rare herbaceous plants that spanned more than 30 years, including exhibiting at national Royal Agricultural and Horticultural Flower Shows. Observing plants, nature and creating a healthy growing stock has been the bedrock of the family business across three generations.

Grandson Daniel Iddon switched the family nursery to trees in 2019. Growing healthy plants is essential, but the challenge is whether we can grow trees to also suit their planting environment. This challenge drove Daniel to relocate his nursery operations to his woodland in Pembrokeshire. Planting trees from the growing trials in his woodland, he noticed how the trees were changing outside of the carefully controlled environment (soil moisture, air humidity, chemical food source), adjusting to the new climate local to the woodland with an abundance of bacteria, fungal species and microbes in the soil.

During growing trials to support the SAF Woodland investment in the Ellepot growing system, opportunities for improvement in the growing medium was identified. SAF Woodland are now developing a living soil to bring the woodland environment into the nursery. The research is being funded by The Forestry Commission Tree Production Innovation Fund (TPIF) in 2021 that has been designed to encourage the development and adoption of new technologies and ways of working that will enhance the quantity, quality and diversity of tree planting stock available for planting in England. By 2025, the government is seeking to dramatically increase tree planting to 10,000 hectares per year in England. To meet these planting targets domestically will require a corresponding increase in the UK production of tree planting material.

T 01239 611980
info@safwoodland.management
www.safwoodland.management



SUDwell™
The Resin Bonded Slab Company

DIY Resin Bound Gravel

Resin Bound Driveways Made Simple

Advantages of SUDwell™
All Weather Resin.

- UV Stable
- Retains Original colour with exposure to sunlight.
- Moisture Tolerant
- Can Be Laid In the Rain
- Longer Working Time

Double the working time of standard resins.

SUDwell™
The Resin Bonded Slab Company

Resin Bound Kits suppliers to the Trade and DIY customer.

01424 830494
www.theresinbondedslabcompany.co.uk

SAF WOODLAND MANAGEMENT

Specialist tree nursery and foresters

We grow our Conifer and Broadleaf tree saplings in biodegradable paper pots with root air pruning technology

Peat Free growing medium with pioneering research into microbial rich organic material to improve plant health and establishment

Seed germinated, cell grown to planted and established tree in 18 months

Contract Growing Capacity for 2022/2023

Spring 2020 Autumn 2020 Spring 2021 Autumn 2021

www.safwoodland.management
Telephone: 01239 611980
info@safwoodland.management

Llwydrain Woodland, Mynachlog-ddu, Clynderwen, Pembrokeshire SA66 7SB

From winter to summer and everything in between, the Astreea Igloo has got you covered

The Astreea Igloo is a weatherproof bubble, designed for outside use, to give your guests shelter from the weather. But it isn't just any ordinary outdoor cover, made in a European aerospace factory the frame is made entirely from aerospace aluminium, meaning its built to last.

However, this doesn't mean the Astreea Igloo compromises on style. Covers to suit all seasons and vintage lighting make the igloo an

inviting environment for your guests to spend time with loved ones.

Pick and mix your covers to suit the season

All you will need is one frame which will serve as a dining space all year round. Simply swap out the covers depending on the season and forecast.

NEW Igloo Pro

Astreea have just released a new

cover for their igloo frame. The cover is made from polycarbonate panels giving a more permanent and robust structure.

The new Igloo Pro along with its polycarbonate cover includes a sliding door panel with a locking system allowing for easier access. The 360-degree dome allows you an uninterrupted view without having to feel the chill of a late night. Ideal for restaurants, home dining, glamping,

outdoor events, or garden igloo.

There are so many uses and possibilities for our outside cover from providing protection from the elements for restaurant diners or a garden furniture alternative for your home.

Visit astreeuk.co.uk to find out more or call 0330 2200671 to speak to one of our friendly advisors.



MAC Cabins



MAC Cabins Limited is a fast-growing Timber Building company based in Okehampton, Devon, with over 30 years' experience in the construction industry. Proud to be the providers of one of the largest selections of; Timber Buildings, Log Cabins, Leisure/Holiday Cabins & Glamping Pods, in the heart of the South West of England.

To compliment the extensive ranges of timber buildings, MAC Cabins also offers a vast variety of other Timber Frame & Modular Frame options, providing one of the widest selections of timber building options, within the market-sector.

For all timber frame styles, MAC Cabins works with self-build and custom-build projects, where the initial design has already been completed with architects. We help to guide small to medium-sized developers, on sites of 1-30 plots, to identify the best way to convert vision into reality.

MAC Cabins continues to expand its vast portfolio of designs and build options, allowing you to select the perfect combination of style, size and price, confident you will find the perfect selection to meet your growing demands.

With every building you will receive a structure that has a higher standard specification than most other comparable products.

T 0800 999 1564
help@maccabins.co.uk
www.maccabins.co.uk



SUNSHADE SERVICES LIMITED

- Thousands of Design Options Available
- Up to 100% Shade Cover & 100% UV Resistance
- Bumper Pads Fitted as Standard
- Designed, Manufactured & Fully Installed

Specialist all-weather outdoor structures & shelters

01782 398848 / 07807 063734

info@sunshadeservices.co.uk
www.sunshadeservices.co.uk

astreea[®] igloo

ONE FRAME | FIVE COVERS
 USE ALL YEAR ROUND

NEW

NEW IGLOO PRO WITH SLIDING DOOR

The stylish way to dine outdoors whatever the weather has now got even better with the new Igloo Pro. With a patented aluminium frame, the Igloo Pro also includes the new sliding door and polycarbonate panels.

To find out more visit: astreeauk.co.uk
 Astreea UK | info@astreeauk.co.uk | 0330 2200671

MAC CABINS LIMITED

Modular • Artisan • Contemporary

Providing one of the largest selections of Timber Buildings, Post & Beam & Timber Frame, Log Cabins, Leisure/Holiday Cabins & Glamping Pods in the heart of the South West of England.

MAC CABINS LTD

Bringing you the widest selection of:

Glamping Pods, Log Cabins, Timber Lodges, Traditional Post & Beam and Timber Frame Buildings throughout the South West of England.

All our cabins, pods and timber building ranges are extensive in design, layout and configuration and offer many different styles of accommodation.

[f](https://www.facebook.com/maccabins) [t](https://twitter.com/maccabins) [i](https://www.instagram.com/maccabins) [p](https://www.pinterest.com/maccabins)

0800 999 1564
maccabins.co.uk

MAC Cabins actively supports & promotes the use of Timber as the most environmentally sustainable material for the construction industry.

Eco-Friendly, Low Carbon, Maintenance Free Solutions

Concern for the environment and action to modify our behaviour is strongly supported by young and old alike. Climate change is not a myth. It is already happening.

In addition, the cost of ownership is often not taken into account when pricing up a project, yet it's a significant additional cost.

If you are going to spend the money, time and effort, doesn't it make sense to design properties that stay looking good, without an ongoing cost for maintenance?

The Solutions

Recycled plastic profiles are an ideal replacement for traditional building materials and with no requirement

for ongoing maintenance.

Rapid Growth

A family business Kedel Limited, based in Burnley have just celebrated their 12th birthday. They've experienced extraordinary growth of approximately 30% a year, since 2010.

Industry Recognition

It's clear that the building industry is eager to play a part in reducing its impact on the environment, having previously been regarded as a major contributor to global warming and waste plastic pollution.

Typical Example

Kedel's decking products were used for the viewing

platforms on the Archelor Mittal Orbital Tower at the London Olympics to reduce its carbon footprint. More recently the National Trust is replacing wooden fencing with recycled plastic from Kedel as it means they* will just need to do the job once.

Wide Range

Other popular products include: V-Cladding, T&G, Decking, Fencing, even Outdoor Furniture, the list is endless. It's as easy to work with as wood, produces 250% less CO₂ in manufacture compared to virgin plastic.

T 01282 861325

sales@kedel.co.uk

www.kedeltrade.co.uk



[KEDEL] TRADE

ECO-FRIENDLY PLASTIC PRODUCTS

01282 861325
sales@kedel.co.uk

RECYCLED PLASTIC

Building & Construction Materials

Rot-proof, low-carbon building materials that are easy to work with and require zero maintenance or upkeep throughout their entire lifetime.

Kedel Limited, Oswald Street, Burnley, BB12 0BY | kedeltrade.co.uk

ROSSO TECNICA

ACQUARO CON STILE

ROSSO TECNICA is our new and exclusive range of European inspired designer levers. Manufactured from Grade 304 stainless steel and finished in a new selection of stunning hard-wearing finishes, these levers are the perfect accompaniment to the latest trends in interior fashion.

AS PART OF OUR ONGOING COMMITMENT TO REDUCE OUR IMPACT ON THE ENVIRONMENT, THE ROSSO TECNICA RANGE IS SUPPLIED WITHOUT ANY PLASTIC PACKAGING. NO POLY-BAGS ARE USED IN THIS RANGE.

T : +44 (0) 1228 672 900
E : sales@zoo-hardware.co.uk
W : www.zoohardware.co.uk

Rosso Tecnica is part of Zoo Hardware.

Zoo Architectural Hardware



Zoo Hardware are designers and suppliers of architectural door hardware including door handles, knobs, locks, cylinders, door closers, hinges and more. All of their products are produced to the highest quality in aluminium, brass, steel and zinc. Every item they produce is selected for its quality and value for money and they never compromise quality for cheaper prices. Zoo Hardware are confident in their belief that they can offer some of the highest quality products at the most competitive prices on the market.

APS

ADVANCED PERIMETER SYSTEMS

Perimeter security has never been more important whether at home or at work. Advanced Perimeter Systems range of perimeter security systems provide solutions for every security challenge.

Our solutions are quality assured, proven, reliable, robust and simple to install. Whatever challenges you face securing your property why not give us a call to discuss your needs we may be able to design a bespoke solution just for you.

Advanced Perimeter Systems has a reputation as a manufacturer and designer of high quality, high security, perimeter security solutions. We have a range of products available for installation to make any premises more secure from industrial, commercial to domestic property.

T: 01786 479862 | enquiries@apsuk.net
www.advancedperimetersystems.com

SUPPLIER OF HOISTS TO CONSTRUCTION & INDUSTRY

DIRECT
HOIST

HIRE SALES SERVICING PARTS REPAIRS

GEDA 300 Z & Z/ZP
(RACK & PINION)

PAYLOAD
Z - 300KG GOODS
ZP - 300KG GOODS/3 PEOPLE
MAX HEIGHT 50M
SALE ✓ HIRE ✓

GEDA 500 Z/ZP
(RACK & PINION)

PAYLOAD
Z - 500KG GOODS
ZP - 850KG GOODS/5 PEOPLE
MAX HEIGHT 100M
SALE ✓ HIRE ✓

01724 781647 ✕ 0113 819 9997 ✕ 0191 260 0543
 DIRECTHOIST.CO.UK

Their in-house design team is fully qualified in all aspects of design and production and they constantly aim to supply innovative, stylish and cost-effective hardware solutions settling for nothing less than top quality. Design facilities at their head office means they can create, manufacture and deliver state-of-the-art products to stay in-tune with current design trends and ahead of the competition.

The Zoo Hardware product ranges cover all aspects of architectural ironmongery, including: Vier – a precision design range of levers, hinges, door closers, DIN locks and cylinders created for the exacting needs of Architects, Specifiers and Contractors; Fulton & Bray – traditional and classic brass door hardware and accessories ideal for period and contemporary properties; Rosso Tecnica – a new European inspired range of designer levers and accessories made from SS304 and finished in a selection of new hard-wearing finishes; and Foxcote Foundries – a wide range of traditional black antique door furniture and window fittings.

View their full range of products at: www.zoohardware.co.uk or call one of their friendly sales team on: +44 (0)1228 672900 to discuss your requirements or to request a catalogue.

App Site Services

Number One Tool Hire Specialist for Air and Hydraulic tools. If you're looking for solutions for your construction site, then call us today.

APP Site Services are a leading distributor of site supplies and services to the construction industry. One of our main focuses of the business is our hire and sales department for construction tools.

Here at APP Site Services, we provide an excellent service, not only with the range of

products but with the level of care each order is given and the speed with which we can deliver.

We have a range of [tools and associated products available to hire](#). Some of the tools we specialise in: [Rebar Cutters](#), [Rebar Benders](#), [Concrete Splitters](#), [Concrete Combi Shears](#) and [Pneumatic Picks](#).

Whatever your scenario we have an option for you...

For our full range of products visit our website or call the office on 01909 519 519. Most tools can be shipped next day and be hired for various lengths of time.

We are happy to help and support your business and look forward to hearing from you soon. APP Site Services is part of the APP Group.

Contact
www.appsiteservices.co.uk



VIP-Polymers Ltd



Designed to perform and engineered to last, VIPSeal® is a versatile range of flexible couplings and adaptors for joining and repairing low pressure and non-pressurised pipes of any material and size combination.

Manufactured in the UK by VIP-Polymers Ltd, with a manufacturing heritage of over 99 years, supplying UK & international water, tunnel and rail industries, every product in the VIPSeal® range meets the requirements of British and several international standards.

With product design, rubber compounding and manufacture through to quality control and laboratory testing all under one roof, coupled with the highest quality raw materials, each VIPSeal® product is manufactured to the same exceptional quality.

Designed, built, tested and proven to perform, VIPSeal® products are simple to install and exceptionally reliable meaning you get the pipe connection sealed correctly, first time, every time.

The VIPSeal® range includes:

- ▲ Standard and Drain Couplings
- ▲ Adaptor Couplings
- ▲ Extra Wide and Large Couplings
- ▲ Wall Seals, Puddle flanges and Saddle Connectors
- ▲ Flexible PVC Elbows, Tees and End Caps

VIPSealChem – Our new addition to the VIPSeal® range is the latest in chemical coupling innovation. Designed for use in the chemical, pharmaceutical and food industries, VIPSealChem is designed for easy installation, reducing both installation costs and operational downtime.

www.vip-polymers.com

Air & Hydraulic Tool Hire

We have a wide range of construction tools for hire

01909 519 519
appsiteservices.co.uk



APP Site Services Unit 2 Abbey Way North Anston Trading Estate
Dinnington Sheffield S25 4JL UK

External timber cladding; size does matter

The Timber Decking & Cladding Association (TDCA) is an independent, not-for-profit advisory organisation – established to influence and promote good industry practice. This year, our focus is around highlighting the key information that those buying, selling and using external timber cladding should be aware of.

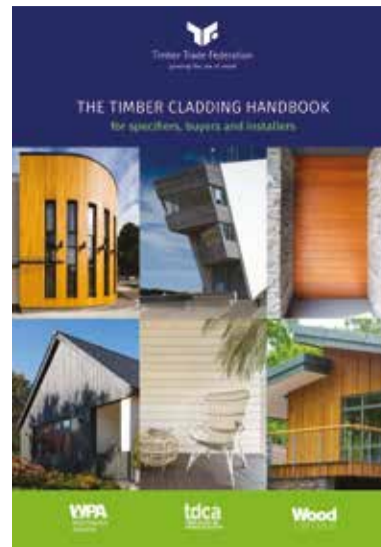
A specific subject is the size of cladding profiles, specifically tongue and groove (T&G) which is an interlocking system where size matters most. According to BS8605 – External Timber Cladding Part 1: Method of Specifying, for medium movement timbers such as Siberian larch, the profile width for a T&G board is restricted to a maximum of 125mm.

Further guidance on tongue dimensions and

movement gaps is provided with bigger gaps and tongues being required for wider boards; at 125mm wide board the standard states a minimum movement gap (mg) of 4mm, tongue width (tw) at least 15mm and thickness (tt) at least 7.5mm.

For those looking for added assurances of quality, the TDCA operates the CladMark quality accreditation schemes which cover products, suppliers and installers. They provide audited verification of compliance with good manufacturing practices and sound installation techniques trusted by the TDCA and the wider industry.

The Timber Cladding Handbook is available as a free pdf download with a printed version available for £12 (inc p&p), go to: www.tdca.org.uk/publications



Do you claim Land Remediation costs? If not, why not?



Land Remediation Tax Relief is one of the best kept secrets in the UK construction and building industries. It is available to recover costs of carrying out remediation work prior to receiving planning permission to render the land useable for new developments.

Qualifying criteria are few. You must be a registered UK corporate entity and the owner of the land. You cannot claim if you own the land and caused the contamination. From this point most costs associated with the clean-up measures, disposal of waste and making good the finished projects form the basis for cost evaluation and submission of the claim.

Known contaminated land can be claimed for. Derelict land that has remained unused from the earlier of 1st April 1998 or date of acquisition can also form the basis of a claim, especially if it has suffered tipping and illegal waste disposal over the years.

Since Land Remediation must be undertaken before any construction works begin, it is advised to consider remediation preparations early. All contributory costs should be identified and recorded. These are wide and include your own company costs of labour, management, sub-contractors, suppliers, travel and subsistence costs, surveys, tests, disposal and replacement of soil and making good.

Generally, brown field sites and land that has existing buildings will be contaminated, especially where older buildings are suspected of containing asbestos in any form. Used land can contain old foundations, utility services, hydrocarbon and chemicals whatever. If remediation surveys discover radon gas emissions, Japanese Knotweed and any other invasive plant species and contaminants deposited through earlier occupier activities, these too can be included in remediation costs. Where buildings contain asbestos, costs of removal and either demolition or in-situ encapsulation and sealing of the asbestos elements is a claimable cost.

The definition of what is contaminated land is peculiar to land remediation relief legislation and is broader than for planning purposes as in Environmental Protection Act 1990. It is beneficial to know land remediation relief is available before purchase of land. This reduces possible uncertainty and risk.

MCS Corporate urges its clients to consider all possible sites for development and planning. We can give early assurance of a likely claim and work with you to identify, prepare and submit claims as the remediation proceeds.

Contact
T +44 (0)1926 512475
charlotte@mcs-corporate.com
www.mcs-corporate.com

Simonbox
IP66
Waterproof
Floor Outlet



Occasional Power Outlet ideal for concourse, garage showrooms, pop up display areas

Gromtec
 europe Ltd

Available from your electrical wholesaler



Available in two finishes

For more information
www.simonbox.co.uk - 0203 2867949



Land Remediation Tax Relief



Land remediation is a tax relief available to property developers and landowners.

To qualify for Land Remediation Tax Relief your company must have incurred costs on cleaning up land or buildings considered to be in a contaminated state. The scope of costs allowed is generous.

You must be registered as a limited company in the UK and be the owner of the land or building at the time of the remediation work. In addition, the land or building must be owned either as a freehold or longer-term leasehold.

Common examples of qualifying contamination:

- Asbestos
- Ground and landfill gases
- Japanese Knotweed
- Sulphate contamination in soil and concrete
- Arsenic
- Removal of redundant utility services and concrete foundations

Qualifying costs can include surveys, excavations, soil and groundwater treatments, staff costs, materials and subcontractor costs. Claims can be made for categories of derelict land. This can be advised with relevance to time periods when land could be considered for derelict status.

Regardless of the industry you operate within, if you've acquired land or buildings in a contaminated or derelict state for intended commercial use, you could claim.



01926 512475

charlotte@mcs-corporate.com

mcs-corporate.com

Floor & wall protection and prevention from the spread of germs



We all know that the spread of germs can cause major problems, and not just in hospitals. Did you know that Coo-Var Guard-Coat inhibits the growth of bacteria including MRSA and E.coli. This creates a hygienic surface which can be washed easily.

As a two-pack system, Coo-Var Guard-Coat is tough enough to withstand testing environments such as hospital corridor floors and walls with all the bumping they get from trolleys and chairs etc. It will even withstand forklift traffic.

Better than this, the silver ion technology will give anti-bacterial properties for the life of the paint. Available in 8 standard colours including clear. Special colours tinted to BS & RAL standards available to order.

Guard-Coat is ideal for use in areas where hygiene is important OR the spread of germs to many people is likely, such as:

- ▲ Clinics/Hospitals
- ▲ Schools
- ▲ Factories
- ▲ Care homes and Residential centres
- ▲ Prisons
- ▲ Hotels and Leisure establishments
- ▲ Catering/Kitchen facilities
- ▲ Public Buildings

Established since 1908, we are a specialist paint manufacturer with a wealth of experience.

For more information or technical advice on Guard Coat please contact the Technical hotline on 01482 328053.

Heart Pods



Heart Pods based in Coventry design and build a wide range of Pods, Shepherd Huts, Garden Studios and other additional outside spaces.

Most recently, they launched their latest range in Garden Studios. These high-quality flexible spaces can be installed and ready to use very quickly.

Available in three sizes and specifications, they are built in a contemporary design with floor to ceiling windows and doors and are fully lined and insulated.

Whether you need office space, a gym, playroom, bar, man cave or somewhere to escape and relax, the Garden Studios are a great alternative to an extension and at just under 2.5m high, in most cases, no need to apply for planning permission.

The Garden Studios are a great addition to the fantastic Pods and Shepherd Huts already on offer at Heart Pods. You can see the entire range on their brand new website at: www.heartpods.uk

To arrange a virtual show-round, call 01676 540333 or email info@heartpods.uk.

Goland Recruitment

Goland Recruitment was established in 2012 to provide the Recruitment Industry with "Quality Driven Recruitment".

At Goland Recruitment we are confident we provide a service second to none.

We are hands on and work closely with our clients and candidates to ensure that the best service is delivered to fulfil both their expectations and requirements.

Making sure that each of our clients and candidates receive the most professional service we can offer. This approach is embodied in our

company ethos of providing "Quality Driven Recruitment".

Goland Recruitment is committed to sourcing people who are genuinely interested in what they do. We realise costs are important, so we strive to offer the best value for money and costs that are totally transparent with no hidden extras.

Contact www.goland.group






LUXURY HOME SPECIALISTS

Acres Architects are an award-winning architects practice. We're proud and passionate about being focused on the residential sector, this means we can do this in a **BIG** way.

We help you to create the perfect **HOME**



PARAGRAPH 80



NEW BUILD CONTEMPORARY



NEW BUILD CLASSICAL



BARN CONVERSION



EXTENSION REMODELLING



SMALL PROJECTS








IF YOU'RE LOOKING TO START A PROJECT, WE'D LOVE TO HEAR FROM YOU.

/ 0808 169 4480 / INFO@ACRESARCHITECTS.CO.UK

/ ACRESARCHITECTS.CO.UK



The Source of Clever Plumbing

TYDE offers over 6,000 quality plumbing and heating products under the trusted Dudley, Epsom and Beta brands from concealed and exposed cisterns and cistern components to flush pipes, brass fittings and drain rods. We are committed to UK manufacturing and our state-of-the-art facilities produce innovative plumbing supplies that installers and end-users love and trust.

The Dudley Turbo Edge® adjustable syphon is the World's most compact syphon, guaranteed to fit more places than any others with absolutely no compromise on flush performance, offering plumbers and installers a versatile,

easy-to fit and easy-to-service solution even in the tightest spaces.

For more information on TYDE products, visit www.thomasdudley.co.uk/tyde

Follow us on Twitter @TYDE_Plumbing or Instagram @tyde_plumbing

Contact
T 0121 530 7000
info@tyde.co.uk



Reflect your lifestyle with bespoke sliding doors



Transform your space with bespoke door fronts from Mirror Door Systems Ltd. Established in 1994, the company is known for its quality, workmanship and efficient delivery.

We like to work closely with our customers to explore their ideas and come up with a bespoke solution just for them. They can come to the showroom to get ideas for what they want or come to us with a fully formed idea. We can normally accommodate every customer's preference, whether they want something in a different colour, material or size. The door fronts are ideal for a wide range of things, such as walk in wardrobes, room dividers or offices – sliding doors are great for maximizing smaller spaces.

We also do a lot of work with new builds. Of course, like many companies working within the building sector, Mirror Door Systems was greatly affected by the COVID-19 pandemic. The building sector basically stopped so any new builds we were working with weren't going ahead. We had to stop everything for about eight weeks, entirely shutting down and furloughing all our staff.

Then, when we came back, we were at full capacity, but we couldn't get the stock we needed, because everyone was after the same thing, so it was in short supply. Now things have started to pick up at a steady pace and we're back up to capacity with our stock.

A lot of people are still worried about coming into the showroom, but we can discuss everything over the phone. We can send brochures to show the doors that have been made previously, and we can even send an A4 sample, so you can see a version firsthand.

With this level of service, its easy to see why Mirror Door Systems Ltd is a leading UK provider of made to measure sliding doors. Its full product range includes six different sliding door systems with over 30 different colours, including wood grain finishes. All the systems also incorporate anti-jump safety features and have been designed to accept the choice of safety back mirror, opaque glass and/or panels. They are available in bulk form, door kits or made to measure.

Interested in find out more?
Head to the website or get in touch.

T +44 (0)1268 573357
www.mirrordoor.co.uk



WWW.HARDLIFEUTILITY.COM

01525 851912

CONTAINER SHELTERS FROM £24 PER SQUARE METRE



STORAGE TENTS FROM £29 PER SQUARE METRE



LIVESTOCK SHELTERS FROM £57 PER SQUARE METRE



ALSO AVAILABLE SCANDINAVIAN STYLE HEAVY DUTY STORAGE

- INDUSTRY LEADING PVC HEAVY DUTY PVC FABRIC.
- CHANNEL STEEL TYPE CONNECTION FOR ADDITIONAL FRAME STRENGTH AND SUPERIOR WIND AND SNOW LOADINGS.
- CONDENSATION RESISTANT COVERS AVAILABLE.

FROM £40 PER SQUARE METRE

FOR ALL YOUR BUILDING NEEDS!

Experience unbeatable service today

**Grant
& Stone**



**Building
Supplies**

A company well built

£40 OFF
YOUR FIRST
ORDER!

Bring this advert in to any
Grant & Stone or RGB
branch to receive £40 off
your next qualifying order*

www.grantandstone.co.uk | www.rgbltd.co.uk

Find us on social for
news & offers!

*Terms & Conditions apply. Orders must be over £250 (exc VAT) to qualify. Only available to new customers at this time. No cash alternative. Offer ends 31/03/2022. Grant & Stone Ltd. Rawle Gammon & Baker Ltd. Registered address: Unit 2, Mill End Road, High Wycombe, Buckinghamshire HP12 4AX.



UK's leading roofing system solutions' specialist

The CARLISLE Construction Materials is UK's one of the leading provider for single-ply roofing systems supplier for flat roofs. For more than 50 years, we have been putting all of our experience and passion for EPDM into the development and production of sustainable, single-layer waterproofing systems.

Our EPDM products are easy and quick to install as well as being safe as they can be installed flame free. RESITRIX® is the only waterproofing membrane to combine the material advantages of the synthetic rubber EPDM and high-quality, polymer-modified bitumen. The hybrid modified bitumen and EPDM membrane offers torch-free installation and a certified service life of more than 50 years

HERTALAN® EASY COVER membranes combine the excellent material properties of the EPDM material with tailor-made solutions. For HERTALAN® membranes, EPDM sheets are

vulcanised together using a special hot bonding method. Thanks to the joint seams pre-assembled in the factory, only around five per cent of the manual connections have to be carried out on the actual construction site. The roof sealing is supplied as a perfect fit, like a tailored suit, in a single piece to the building site.

Used in combination with our HERTALAN® EASY COVER EPDM-membranes, the RhinoBond® fixing system uses induction-compatible plates to secure the EPDM-membranes and insulation to the roof construction. This provides the advantage of fixation without penetration of the roof membrane.

PU Liquid Waterproofing

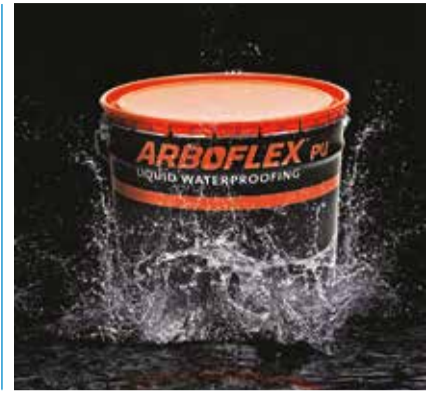
ARBOFLEX PU is a single component liquid made from pure polyurethane which, once cured, forms a seamless elastic membrane without any joints. The material properties of PU

enable it to be airtight and form a sturdy waterproofing layer on a range of substrates.

As a single component, there is no mixing of any additional part as is required when using GRP or PMMA systems. Additionally, any leftover material can be stored for weeks in an airtight plastic container, saving money on wastage.

ARBOFLEX offers an extensive range that includes sealants, UV coating, edge trims, slip-resistant granules for walkways and balconies. The success of cold-applied Polyurethane (PU) Liquid systems such as ARBOFLEX is essentially due to properties including quick curing time, strength and durability.

For further information on our range of waterproofing products please visit www.ccm-europe.com or call 01623 627285



CONSTRUCTION SITE SIGNS

ALL THE SAFETY SIGNS AND PPE YOU NEED AT THE BEST PRICES!

20% OFF

ALL CONSTRUCTION SIGNS AND SAFETY SIGNS use code: **CON20**

Signs 2 Safety 0800 328 0310

www.signs2safety.co.uk

RESITRIX
HERTALAN
ALUTRIX
ARBOFLEX
ARBO

Waterproofing solutions for flat roofs, facades and buildings

For trade, sales and distribution enquiries
Call: 01623 627285
Email: info.uk@ccm-europe.com

www.ccm-europe.com

CARLISLE
CM EUROPE

Fisher & Company

Established in 1982, we are approaching 40 years of engineering and manufacturing for a range of industries. With our roots in Precision Toolmaking, our manufacturing expertise and flexibility make us unique within the industry, being able to produce to a high standard. From individual bespoke products and equipment alongside large or call off orders for standard off the shelf items. We aim to keep our customers happy with both quality, price and delivery lead times.



From our factory in Somerset we manufacture high quality Feeder Pillars, LED Belisha Beacons and Pedestrian Crossing & Refuge Equipment Column, along with Highways/Sports/Leisure Lantern and Sign Brackets, Keys & Accessories. We make industry beating Insulated Groundworking and Digging Tools which are BS EN 60900 Certificated and come with a 12 month guarantee.

We also manufacture MRI Feeder Pillars for Hospitals, Pre-Wired Feeder Pillars, Ground Boxes and Market & Event Pillars to project requirements and completely Bespoke Feeder Pillars up to IP67. We are currently awaiting our certification for complying with ISO 9001:2015 Quality Management System. We also invest in our staff and their wellbeing because our customers and staff are at the heart of everything we do here. We ensure appropriate training is given to continue our staff career progress too.

Our wide range of customers include NHS and Trusts, MOD, Local Authority, Contractors such as Skanska, Eneveo and Ringway Jacobs, Jaguar Landrover, Boots, DPD, Supermarkets and Facilities Management companies and all the national Electrical Wholesalers. We also export to Gibraltar, Malta, Ireland and other overseas customers.

Talk to our friendly, knowledgeable Sales Team about your project on 0333 666 2122 or email us at info@fisherandcompany.co.uk for a quote and specification.



HUGE SOLAR BEACON SALE!

Purpose Built 168mm Ø Column Base OR Post Top Mount



- Completely self reliant
- 2N° 14Ah Batteries
- 2N° 20W Photovoltaic Panels
- Fade resistant polythene AmberGlobe
- Aluminium corrosion resistant gallery powder coated black
- 12N° Bright White LEDs - 6 in use & 6 in reserve
- 4m Zebra column with 168mm diameter base and locking access door to house the batteries. Black gloss powder coat finish with 3N° 300mm reflective white bands
- Available in Root & Bolt down flange base
- Compliant to BS8442:2015, EMC & CE
- Available as a post top mount
- Zebra poles available in 3m & 4m lengths
- Top quality British made product
- Portable tray base - suitable for temporary use and suitable for both pallet truck or forklift



1-4 Cary Court,
Somerton Business
Park, Somerton,
Somerset, TA11 6SB

T 0333 666 2122 • info@fisherandcompany.co.uk
www.fisherandcompany.co.uk

Traditional is the new modern – use of timber in modernist design

“We must recognise the importance of timber in overcoming our climate challenge,” David Warburton MP wrote to his fellow MPs recently. On paper, politicians are making the right noises having enshrined into law a commitment to reduce carbon emissions by 78% v 1990 levels. The MP for Somerton and Frome goes on to predict that we will move from a “20th century built environment comprising concrete and steel to a 21st century that lives in harmony with nature”.

So what will this look like? Would a timber window look right in a minimalist project, so beloved of modernist architects?

It could do, people are increasingly incorporating timber into contemporary designs, combining modern Passivhaus standards with sustainable carbon reducing materials. A great example is Hackbridge Passivhaus Plus Primary school which is described as a modernist log cabin. Using modern machined timbers that are sleek and modern unlike the rustic timber frames of the past. Engineered timber is much less likely to twist and warp meaning symmetry and form are easier to achieve than was the case with old timber buildings.

As timber window manufacturers, the increased use of timber in the built environment is heartening, but we still regularly face questions about the durability of timber windows and doors. This is a hangover from

the poorly made, cheap wood windows used in low cost housing of the 60s and 70s which gave timber a bad name, ably fuelled by the strong marketing messages of the uPVC market! In fact, modern engineered timber windows are scientifically proven to last 65 years or more with minimal maintenance if made to approved standards. However, there is a role that architects can play in ensuring they last way longer than this.

The modernist styles of buildings incorporating flush windows and flat roofs is far from ideal when it comes to protecting buildings in a four season temperate climate with wide variation in rainfall and temperature. Water ingress is responsible for a high percentage of claims against architects. The technology developed in modernist design would have impressed architects of the late 19th century, but they would be surprised at the abandonment of precedent in vernacular design and detailing gleaned over centuries of trial and error.

So, if a timber window company designed buildings, what would they specify? Stephen Wright, Chairman of George Barnsdale explains:

“Where possible, the simple answer is protecting the building from rain and harsh sunlight. From the foundations up, the act of displacing water away from the building helps to prevent damp, extends the life of windows and protects the walls of the building too.



For instance, overhanging eaves are great for helping to control temperature inside the building as long as you can avoid cold bridging”

Whilst traditional details may be at odds with the clean lines of modern building projects, there are lots of ways of achieving the same result using contemporary architectural language and design elements. Peter Barber Architects have mastered the art of combining a British vernacular with the demands of contemporary architecture.

What about the positioning of the windows?

“Ideally, set the windows back in the reveal – this helps to protect them further from adverse weather. This doesn’t have to look traditional though. The Orsi Kaneh building in Iran is a great example of how a timber building can be optimised to deal with extreme weather whilst retaining a contemporary feel.”

“We would also try to set the windows on stone, tile or aluminium and avoid extended cills – much of the damage that occurs to windows starts on the cills and in the bottom joints where water sits and eventually moves up the grain of the timber if they aren’t made correctly. Whilst modern engineered window incorporate precision joints, end grain sealing and modern breathable coatings, sitting them on stone would help preserve them even further and reduce maintenance. Of course, there are considerations around the sourcing of

the right sustainable materials.

And doors?

In order to satisfy Part M of the building regulations (accessibility), there is a tendency to create a contradiction in the need for level thresholds and the demands of a sustainable future. There are details that can be used but many architects have a habitual cognitive bias against timber in favour of aluminium due to the outdated perceptions of timber. There are gains to be made environmentally by going for timber doors which are usually more competitively priced too. If tweaks to the design could be made like setting the door back from the edge of the building envelope it would make a difference to longevity.

Stephen Wright continues “building regulations requiring level access alongside high weather and thermal performance would require alterations to the basic laws of physics! Maybe it’s time to rethink this?”

Whilst there is no perfect solution to the climate crisis, as hosts of COP 26 this winter, we British really ought to be leading the way when it comes to the most sustainable building material available – timber. The creativity and vision that architects possess should enable them to overcome the connotations of “old fashioned, traditional timber designs” to create modern, sleek, stylish and contemporary buildings that are also kind to the environment and more pleasant to live in.

Join George Barnsdale for their latest CPD webinar “The Future of Conserving the Past – how to sustainably specify timber windows & doors for conservation projects” on 7th April 2022 at 1pm

Aimed at professionals working in the built environment, the event considers two sides of the conservation coin – balancing the environmental impact of inefficient historic properties with the need to protect the integrity of the building for future generations. Current planning laws try to incorporate ways to achieve net zero whilst, on the other hand hampering us in bringing old buildings up to modern, sustainable standards. The session will look at ways in which clever design and use of modern techniques can help architects and developers find a better.

Sign up for free here: www.georgebarnsdale.co.uk/cpd



STORAGE PROBLEMS?

We've heard it all.
Better yet, we've solved it all.

Get in touch with our Business Services team today to book your **FREE** consultation.

The trusted experts in space utilisation.



Scan me



BiGDUG[®]

WWW.BIGDUG.CO.UK 0800 141 3380

TAYPLAY LTD - The Rope Net Playground Equipment Specialist



Given the restrictions caused by the COVID pandemic in the last two years or so, children have not been as active as parents would have liked, especially with the added draw of playing on sophisticated electronic games & on other electronic devices.

What kind of outdoor play equipment inspires or encourages children to get outdoors, & is challenging enough to interest them, whilst keeping them safe? Anything which gets children out playing is great, & most, if not all, of the playground equipment found in any UK playground fits the bill to some extent; whether lower, or higher, level.

Rope play equipment provides many different benefits to children of all ages, both in terms of their general health & wellbeing, right through to helping them to develop new skills, & gain experiences through adventurous play. Children learn to take risks safely on larger pieces of equipment, as one example, which might otherwise initially be out of their comfort zone.

Seeing other children doing the same helps them become more assertive in their decision to take that step along the wobbly rope bridge or to climb to the top of that 8m pyramid net. We all learn through

practice, trial & error. Tayplay's play structures provide the opportunity to develop these skills, along with building confidence, on our products, which must meet all necessary safety protocols.

Climbing a tall net structure, develops & improves cognitive & motor skills through play. Children also learn team building skills, as they play together, & they also naturally encourage each other to take that extra step. Everyone remembers being egged on during some play scenario which initially looked daunting.



The power of play is immeasurable.

Our rope net Activity Nets, spinning Cone Climbers & other equipment can help feed & inspire children's imagination. Perhaps they are climbing Mount Everest as they ascend one of our pyramids, or maybe they are rescuing a prisoner from their captors, as they scale the walls of Duart Castle, from our innovative new TRAIL range?

We use premium materials which are long lasting, & the rope is of a quality grade, which is more comfortable on children's hands. It is colourful, eye-catching & interesting, or can be naturally

themed, when necessary, to blend in with the local environment. Rope based equipment also provides more space to play through the structure, as well as moving up & round the outside, feeding children's desire for exploration & adventure.

Contact us or visit our website at www.tayplay.com.

Our full product range is here, & we have even more exciting products coming in 2022, in addition to our recently launched Tayplay TRAIL range. As modular equipment, it offers yet more challenges, excitement & design flexibility for children through play.



Tayplay TRAIL is here!

Tayplay are the largest UK-based trade supplier in EN1176-1 certified, rope playground structures.

Our family of partners can help with full playground design, costing & installation.

www.tayplay.com | sales@tayplay.com | +44(0)1738 449 084 | Product Shown: The Duart, from the Tayplay Trail Range