

Building & Construction Review



Your one stop sewage solution

Established in 1974, Allerton UK is a leading off mains drainage company, covering sales, servicing, commissioning and repairs of all types of septic tanks, sewage treatment plants, sewage pump stations and soakaways. Working across the East Midlands and beyond, Allerton boasts a team of dedicated and experienced workers, all trained with British Water to ensure they are in the best position to properly assess a situation and correct it.

British born and bred, our sewage pump stations are made on premises located in Sleaford and treatment plants from the UK. Serving Lincolnshire and all surrounding areas, one of the main products available from Allerton is the ConSept.

The ConSept uses the existing septic tank, removing the need to install a new tank with heavy machinery, and it is quick to install to save time, money and disruption. The tank has no moving parts inside, and it maintains the water at the correct level, keeping your drains clear right up to the house. Moreover, it is manufactured using high grade composite materials and non-ferrous components, meaning the ConSept does not corrode, offering a long and trouble-free life.

The ConSept converts septic tanks into sewage treatment plants, and can be fitted without excavations, apart from the shallow cable and air pipe trenches. Saving the customer thousands of pounds, the ConSept negates the need to have excavators on site. As the ConSept lifts the treated water to the surface, the treated effluent is disposed of, resulting in an easier method.



With no need for replacements, the ConSept can be installed inside an existing septic tank and produces no extra noise. Deriving low maintenance costs, the system requires one service a year and a desludging process and emptying once every two years. While the local desludger can empty the tank or sewage plant, Allerton will service and maintain all its own equipment and that of other manufacturers units too, in fact servicing, repairs and surveys of sewage treatment plants is a major part of its work. The final effluent is discharged into a watercourse or drainage field, and installation and commissioning by Allerton's British Water Accredited engineers is included in the package.

The company put a high emphasis on the continual service of its equipment and over the years has manufactured and installed over 1,200 units all of which are still in perfect working condition. Providing service with a smile, Jon Allerton, Director explained,



"minor problems are sorted out by our engineers on site, and all the initial customer worries are dealt with in advance. We offer initial onsite advice, help with all paperwork such as planning and Environmental Agency permits, installation and ongoing servicing, including repairs. Every aspect of what we do is to please the customer. The experience we have of making a unit and then constantly improving it becomes second nature to everything we do."

Jon mentioned some recent changes to the company, "the company has been recently restructured and is now Allerton Bradley Ltd. Jason Bradley has been a large shareholder for several years and has worked for the company for most of his life."

Allerton serves a wide range of sectors from hospitals, factories, schools, and housing estates, and its capabilities to help people across the country save time and money are endless. Going forward, the company is committed to maintaining its compliance with regulators, and ultimately protect the environment.

For more information, see below.

T 0800 328 5492
T 01529 305 757
www.allertonuk.com



Carron
See on page

03



Waterscapes Limited
See on page

05



Gromtec Europe Ltd
See on page

06



Bona Limited
See on page

09



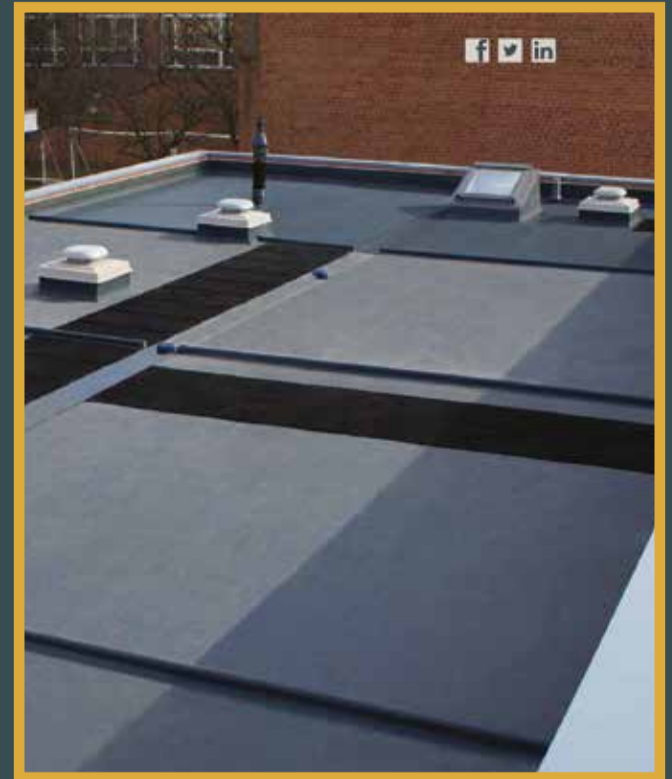
TN International
See on page

10



Davison Forklift Ltd
See on page

24



FLEXIBLE GRP

Providing an exceptional combination of versatility and durability. Quick to lay, with no need to strip or re-deck a roof, this fast-curing system saves time and money.

It's a single-resin solution which can be applied to a multitude of surface types and structures including vertical sections.

With two coats applied within one hour, TuffStuff® Flexible GRP will form a highly flexible, extra tough and seamless waterproof membrane - can be a solution for areas of heavy duty foot traffic.



TUFF STUFF
FLEXIBLE
GRP



www.tuffstuff.co.uk

T 01977 680250
orders@tuffwaterproofing.co.uk

Carron celebrates its 20th anniversary



Liquid Metal,” mentioned Barry Whitehead, Sales and Marketing Director.

Based from its location in Fulbeck Heath in Lincolnshire, the company provides its products on a global scale, with a network of approved stockists. “To become an approved stockist for Carron you must be actively promoting and selling the products. We have stockists throughout the UK and some stockists in Spain, Belgium, Poland, so we are UK based, serving a worldwide customer base. Qualifying stockists can get in touch and apply for a trade or stockist account through our website,” said Barry.

Offering an enviable variety of customised choices, Carron excels in providing bespoke, distinctive designs. With its own onsite paint and spray shop, Carron can provide an array of finishing options, including semi-gloss, full gloss and satin.

“We offer a selection of bespoke finishes, including hand burnished, satin polished, highlight polished and hand gilded. We can also incorporate aged effect patinas. The options are almost limitless, it really depends on your depth of imagination. We pride ourselves on providing detailed decoration, to provide a superior aesthetic quality,” added Barry.

Carron is a specialist in traditional cast iron radiators and accessories with over 50 different cast iron radiators available, that provide a unique form of heating, which incorporates the characteristics of the past with the functionality and design of the present. Established in 2001, Carron is celebrating its 20th year in operation and the renowned reputation it has built over the years.

“We provide cast iron radiators available in a wide variety of heights, and custom made widths, styles and colour. We also offer a free colour matching service, based on a wet sample. We offer a wide colour range consisting of 10,000 colour choices, including Farrow & Ball, Little Greene and Robersons

The company also provides a variety of accessories including valves, bleed nipples, pipe shrouds and wall stays, available in chrome, satin, nickel and brass.

In addition to radiators, Carron also provides cast iron fireplaces and stoves. Barry explained, “We offer a range of cast iron fireplaces including: combination grates, fireplace inserts and a full range of surrounds. We have recently launched our Eco 2022 range of stoves which are wood burning with a multifuel conversion option, available in six different enamel colours including: ash grey, sage green, antique, black, red and cream enamel, along with a traditional gun metal black option.”



Building a reputation for quality, Carron ensures that its radiators provide a premium finish and the company maintains ISO:9001 accreditation to assure quality. Carron radiators are known for their handcrafted workmanship, distinctive design and longevity, which is evidenced and supported further by the company’s impressive lifetime warranty.

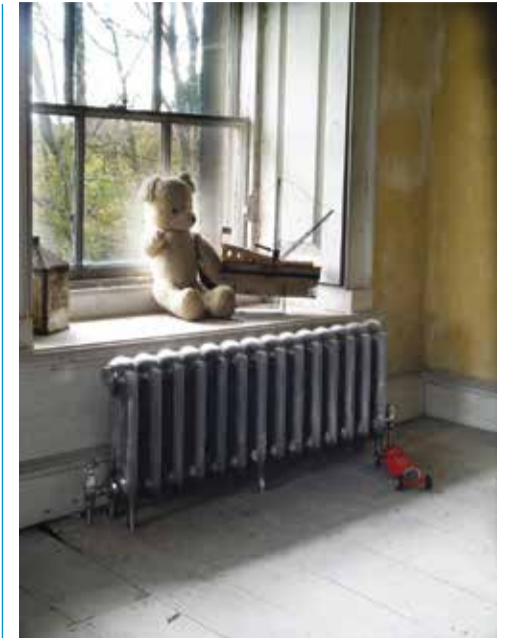
Don’t want to just take our word for it? Carron maintains an outstanding 4.4 stars on Google Reviews and has received multiple 5 stars reviews like the one below:

5 stars - We recently took a trip to the warehouse to look at Radiators- the customer service was absolutely amazing. Barry, who is looking after us was so knowledgeable and helpful, that we will absolutely be using Carron for our renovation. First batch of radiators are ordered, and will be looking for bathrooms soon enough! The showroom is so impressive, Barry showed us around which was the icing on the cake- so lovely to see how it is all done, and we appreciate the hard work that goes into it! Everyone that we met was delightful- so enthusiastic about what they do too, which we loved! Being in business ourselves, we are quite tempted to poach Barry actually- he is just wonderful!!



In regards to its latest developments, Carron has been evaluating its processes and implementing new ideas both online and onsite. One of these developments includes the addition of ‘How to’ video tutorials onto its website, to provide stockists and end users with important information on things such as, how to change a radiator and how to carry a radiator.

Barry elaborated on some other latest developments, he stated, “We’ve seen a rise in demand over the last 12 months and with the COVID-19 pandemic, a lot of people have been focusing on home improvements. So we have been working on our range and adding new models. We are also starting to supply ready-



to-go radiators to allow stockists to be able to get a hold of a ready-made radiator urgently, within 2-3 days. We are changing our manufacturing processes and looking at the entire process from start to finish, even down to our packaging to ensure we remain environmentally friendly. We are improving our operations to provide a seamless process from one side of production line to the other, while constantly ensuring quality.”

Indeed, 20 years of experience has been an impressive achievement for the company and Carron is not stopping there. The company is committed to improvement and development, investing in enhancing its operations and furthering its offering for customers. The company has just invested in two new machines which will double its production capacity for manufacturing of polished orders, reducing the lead time for this premium finish.

Another venture associated with Carron is Hurlingham Baths, which offers a full range of cast iron, copper, nickel and brass baths, including accessories from basins to overflows. Offering unique, showstopping designs, each bath creates character and is the perfect complement to any bathroom. This exquisite range is also available in over 25 styles of bath, 10,000 colours and multiple finishes.

For more information, please see below.

www.carronheating.co.uk
 Twitter: [carroncastings](#)
 Instagram: [carroncastings](#)
 Facebook: [CarronCastings](#)

www.hurlinghambaths.co.uk
 Twitter: [hurlinghambaths](#)
 Instagram: [hurlinghambathrooms](#)
 Facebook: [HurlinghamBaths](#)



AR Architecture, North-West London

In this issue of Building and Construction Review, we are pleased to announce AR Architecture as the recipients of our Architectural Services Company of the Year Award.

Finding the right architect is the foundation of any successful building work. New contemporary houses, multi-unit developments, extensions, loft/basement conversions and period refurbishments are the speciality of AR Architecture. Alexander Rakita is the Director and Owner of the company and since 2010 has built the practice upon the foundation of his 20-year international career. Nowadays, AR Architecture is a dynamic and ambitious multilingual cosmopolitan team that has the ability to breathe new life into structures and building upgrades.

"We are flattered to have received this award. It's always good to feel our hard work and effort has been recognised. What we do here, at AR Architecture, is to take in all the ideas and the questions of our clients and provide them with everything they need to make their decisions on construction. For us, it is not only about beautiful designs – it is about making the most of client's ideas, budget, and time. We like to think of our clients as our co-authors. Being at their side on the journey through the construction project is really where we add the most value. It's about listening to the needs and finding the best delivery", said Alexander.



AR Architecture thoroughly believe that the lasting value of buildings is determined by the perennial factors of scale, materiality, quality, practicality, adaptability and interaction with the environment. This mindset has heavily influenced the company's style as each design incorporates a comprehensive examination of environmental issues to reduce energy consumption and derives a maximum benefit from natural resources.

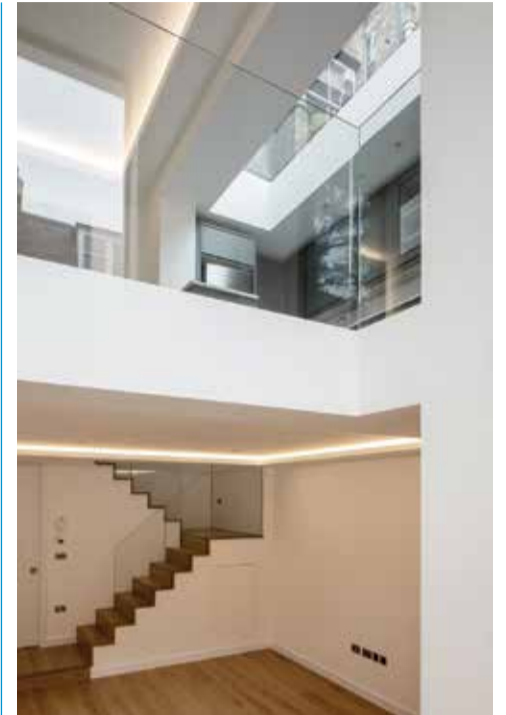
"Our approach to creating great architecture is that it should be meaningful. We make it work from the inside out. We factor everything into our design process, from climate concerns to energy efficiency. Every project starts with eco-efficient designs and functional zoning, from this we aim to create well-considered, comfortable, elegant modern structures whilst being environmentally friendly at the same time," stated Alexander.

Heritage buildings and projects in conservation areas are at the core of the company's expertise. When working in the historic environment, AR Architecture takes care to avoid any imitation of the past in the new interventions, while carefully preserving and emphasising the existing original elements and features. An example of such hi-profile work was the recently completed full refurbishment of a Grade II listed building in Kensington, where AR Architecture acted as the Architect and the Lead Consultant collaborating with a renowned Interior Designer and coordinating a high-profile multidisciplinary professional team. At the beginning of the project, the whole building was laser scanned and modelled in Revit to a high level of detail.

Most of AR Architecture's projects use Building Information Modelling

(abbreviated as BIM). All work is done in a virtual 3D model which allows the architects virtually walk through the project's spaces, see relationships between materials, plant and structure, detect any problems at an early stage and keep budgets on target.

No matter how big or small the job or budget may be, AR Architecture strive to deliver a design of the highest standard. The company's services cover the whole architectural process, from initial concept all the way to completion. Alexander and his colleagues deal with all statutory approvals, help to appoint the design team, lead and coordinate it, then supervise the construction working alongside the builders as one team.



website under the 'homeowners' tab which guides them along every step of the process, alongside extensive information, tips and advice on project planning and our services. We aim to increase our presence in Europe, and through our newly appointed office in Portugal we hope we can help British and international clients to make their projects there come to life. We are currently focusing on residential sectors; however, the long-term goal is to participate in more public and commercial work," stated Alexander.

For more information, see below.
T 0207 209 2851
info@ar-arch.co.uk
www.ar-arch.co.uk

We asked Alexander how the past 12 months have fared for the company, he responded, "we noticed the potential clients being very cautious, so we had lots of interest but little commitment. However, this seems to be changing, in the last couple of months business has picked up again and we are gathering a fast pace of momentum. There are already some interesting new projects lined up and lots of prospective clients coming in. Also, we are able to return to the plans that previously were put on hold due to COVID-19: for example, in 2019 we had started setting up an office in Portugal; the pandemic meant we had to stop, but now this project has resumed and soon we will have a fully operating EU branch."

In terms of future plans, AR Architecture is in full swing to develop the business further. "For our private clients, we have built a hub on the



Award winning leading water feature and irrigation specialist



Cross Rail Park



Regents Place

worked so hard to achieve this incredible success."

A recent product release in the irrigation market is from Rain Bird. Waterscapes Limited use various irrigation and water feature manufacturers, and the new product available from Rain Bird is the ESPLX-IVM which is the latest in irrigation technology and the latest product to be added to Waterscapes Limited's portfolio.

In this issue of Building and Construction Review, we are pleased to announce we have selected Waterscapes Limited as our Outdoor Building Services Company of the Year.

"We were both surprised and honoured to receive this award and appreciate the recognition for our efforts to improve the quality and standards within the landscape irrigation and water feature construction sectors," stated Paul Jeffery, Managing Director.

Waterscapes Limited is a leading water feature and irrigation specialist with over 30 years combined experience producing and installing projects for corporate, municipal and private clients across the UK.

Over the past 12 months, Waterscapes Limited has excelled in sales in comparison to forecast, Paul explained further, "overall we were targeting a 10% increase in sales but to achieve double that was fantastic and could only be done with the dedicated people employed here at Waterscapes Limited in both our engineering and office-based staff. Over the past 12 months we have been buoyant. Despite certain restrictions in place on construction sites relating to COVID-19 and some shortages in material supplies, we have had the busiest year since starting the business in 2002. We have managed to increase turnover by just under 20%, expanding all of our sectors, consultancy, irrigation & water feature installation and maintenance services. It was a bumper year and everyone in the business

The Rain Bird ESP-LXIVM has a simple to use interface and advanced diagnostics making it the best irrigation controller on the market. Using 2-wire communication, it is designed for the largest and most demanding landscapes, such as communal landscapes, schools and sports fields, parks and public spaces, or large industrial and commercial sites & business parks. Including best-in-class specifications, it has many powerful and flexible features starting with the revolutionary new Integrated Valve Module with 'smart solenoid' that stays in constant communication with the controller



Liverpool One

to provide efficient irrigation and advanced diagnostics. The ESP-LXIVM is available in two options, standard and pro, the latter can support up to 240 stations and sets new industry standards for water management. It comes with advanced flow management tools such FloWatch™ and FloManager™ to optimise water usage, guards against high and low flow conditions and shortens total watering time.

"Recently, together with Rain Bird and product distributor Landscape Watering Systems (LWS), we ran a training course for all of the Waterscapes installation engineers and contract management team, which everyone found both interesting and helpful. This close support offered by both providers allows Waterscapes Limited to have full confidence in the products installed," stated Paul.

Over the past two years, Waterscapes Limited has reached out to expand its customer base which has led to a increase in turnover and required an increase to 34 members of staff. Its year-on-year strategic business structure echoes growth and sustainability allowing the company to keep a close eye on operating costs to improve efficiency where it can.

With COVID-19 leaving such a devastating impact on the economy around the world, Paul described the effects it had on the company and the industry as a whole. "Both water features and irrigation as trades within the landscape sector, are considered finishing trades, and generally any economic impact felt by the construction industry can take up to three or four years to filter through. As we would be working on live projects of which construction would have commenced several years before, this in some ways delays any economic impact and helps a finishing trade because it gives time for the rest of the construction sector to settle and regroup, lessening the impact to those

involved in the finishes. It also offers time for contractors to explore the market and add customers to also smooth any fluctuations that may occur."

Going forward, Waterscapes Limited's short and long-term goals are similar to each other. The company will continue to steadily grow and build upon its reputable design and quality



Canary Wharf



Leeds University

installation and maintenance services it offers. Waterscapes will continue to invest in its current and future staff providing training for specialist work activities but also in areas such as environmental impact and mental health.

In closing, Paul mentioned, "a skilled, happy and rewarded workforce is the key to any successful business."

T 01963 824166
www.waterscapeslimited.com

Images: Paul Upward Photography



Tidemill Square



Sky Garden

A solution for all your indoor and outdoor electrical connection needs

Gromtec Europe's core business is the manufacture and supply of raised access floor cable grommets for data centres and general office installations. It's latest offering, The SIMONBOX is an IP66 rated watertight floor box designed for use in hard floor areas which require occasional power, data connection and an IP protection rating.

Watertight benefits

- ▲ Watertight floor box can be installed in hard floor and raised floor areas delivering power and data to where it is required and eliminating the trip hazard of trailing cables.
- ▲ Watertight floor box for paving allows the box to be flush-mounted in floors with all types of paving such as porcelain stoneware, terrazzo paving, ceramic tiling, and more.
- ▲ The outlet is available with a standard locking mechanism or with a security lock which prevents unwanted access to the floor box.

Gromtec Europe has worked with Next, John Lewis, Wimbledon Tennis Club and many more major brands across the UK, but the floor box can

be installed in almost any public or private place including department stores, airports, train stations, car showrooms, shopping centres, conference halls, hotels, museums, terraces, gardens, hospitals and sport centres. As the floor box is designed as an occasional power socket, it is ideal for pop-up applications such as display stands, exhibition areas or cleaners sockets. In addition, Gromtec Europe also supplies a range of specialist mini floor boxes for general construction projects.

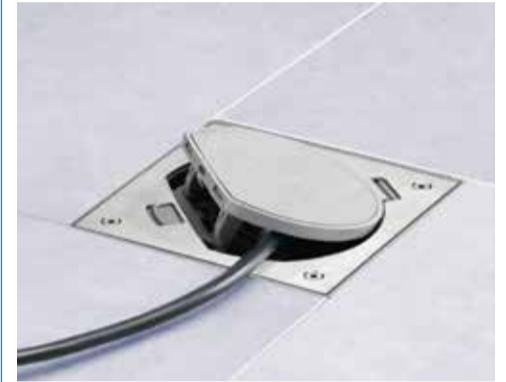


several connection points, furthermore, a drainage pipe can be installed to drain away any possible moisture that enters the box.

The SIMONBOX is CE branded, complies with the international standard CEI-670 for casings, can withstand temperatures of -25°C a + 60°C, and can tolerate a maximum load of 1000kg when closed and 170kg when open. The UKCA marking will be applied in 2022.

Gromtec Europe was established by Gerry Griffin in 1992 and is one of the first manufacturers and suppliers of cable grommets in the UK. Over the years the company has developed some award-winning products such as the Air-Guard® and Air-Block® ranges that have set new standards in terms of performance, safety and design. Its range of brush grommets are designed to eliminate the costs associated with air-conditioned by-pass air leaking through cable openings in a raised access floor.

Gromtec Europe has been supplying some of the world's leading data centres since 1993 and has over 20 years' experience within the industry.



Gromtec Europe work predominantly through electrical wholesalers but is delighted to receive enquiries and offer specialist advice to installers and end users.

T 0203 2867949
info@gromtec.com
www.gromtec.co.uk
www.simonbox.co.uk



Available in two finishes – brushed stainless steel and brass, waterproof SIMONBOX floor boxes are also offered in a flush floor and a trimmed box finish. The raised floor version is secured in place using fastening hooks during installation. The recessed tray fixes the box in place and conceals any installation defects.

The box includes a protective film that stops any dirt from getting inside and damaging the box surface before and during installation. For paving installations, it is possible to install a group of boxes to provide



Simonbox IP66 Waterproof Floor Outlet

**Gromtec
europe**
Available
from your
electrical
wholesaler

Occasional Power Outlet ideal for concourse, garage showrooms, pop up display areas

Available in two finishes
For more information
www.simonbox.co.uk - 0203 2867949

CONTAINEX: Mobile space solutions for your construction site facility

When it comes to the construction industry, mobile space systems are indispensable as construction offices, sanitary facilities, workshops and accommodation. One of the "major players" in the European market is the Austrian container manufacturer CONTAINEX.

Quality meets experience

CONTAINEX produces its mobile space systems in 6 of its own European production plants - and has been doing so for more than 40 years. Around a third of the annual production of 80,000 containers is supplied to the construction industry. In addition, CONTAINEX maintains a large container rental fleet of more than 120,000 units, together with numerous trading partners.

CONTAINEX GREEN technology

CONTAINEX has always relied on energy-efficient designs, the use of recyclable materials and environmentally-friendly production processes. The space modules are therefore manufactured according to the strict internal environmental and

quality standard CONTAINEX GREEN technology.

All-rounder for every need

Individual, flexible and versatile: The portable cabins and sanitary cabins of the CONTAINEX CLASSIC Line are our all-rounders for every purpose. Thanks to the proven modular design and a large number of equipment options, the flexible modules become individual space systems that are specifically adapted to your needs.

Whether as construction offices, sanitary facilities and common rooms, workshops or accommodation: You determine the required floor space and equipment, we deliver the right solution.

Space for your stored goods

The versatile configurable storage containers are particularly suitable as mobile warehouses on site and are available in different sizes from 6' to 20'. Especially for material containers

on construction sites, CONTAINEX has developed a security package that massively counteracts the high burglary risk.

Thanks to the high-quality CDC primer and enamelled powder coating, CONTAINEX containers are not only extremely durable, but also available in a variety of RAL colours.

Service with a capital S

Customer and service orientation are the focus at Austrian family-owned company CONTAINEX. That is why CONTAINEX experts advise our customers and European trading partners in their respective native language. A logistics department of our very own and more than 250 depots throughout Europe also ensure short delivery times and prompt delivery directly to your premises.

Contact

www.containex.co.uk



40 CONTAINEX
Quality since 1981

CONTAINEX

Your low energy and comfortable space solution

CO₂ reduction > 65%

- Ideal as a long-term or temporary space solution
- Optimal thermal insulation to support UK's green industrial revolution
- High quality specification with modern, attractive appearance

www.containex.co.uk

Selwood innovates to build on its position as the UK's leading pumping solutions provider



Selwood's reputation as the number one pumping solutions provider for the construction industry is built on exceptional products, people and service.

As specialists in engineered pump solutions, fluid handling and water treatment, Selwood covers the full range of pumping needs from simple rentals to the development of complex solutions for major building projects.

Operating from a comprehensive network of branches around the UK, including a new London solutions centre, the company also provides a genuine 24 hr emergency callout service.

Selwood's focus is on innovating through technology to provide the safest, most cost-efficient and reliable solutions for construction industry projects while helping businesses meet their goals on environmental responsibility.

For example, it was the first UK pump rental company to offer pumps that can be fuelled by Hydrotreated Vegetable Oil (HVO) in an industry-leading move that will significantly cut greenhouse gas emissions.

Selwood's in-house telemetry system, SelWatch makes it easy to monitor pumps off-site, and to troubleshoot potential issues remotely from a laptop, phone or tablet from anywhere in the world.

Contact the Selwood team for information on our construction industry pumping solutions.

T 0333 014 2000
www.selwood.co.uk



Specialist Brokers of New Build, Self-Build & Retrospective Warranties. Site Insurance & Building Control.

With over 25 years experience in the industry, we can assist with securing the best cover for your project.

We take all the hassle out of the process.

Please call one of our experts:

Ed, Kelly or Rob
Tel: 01284 365345
Ed Mobile: 07968 119620
Kelly Mobile: 07706 410804
Rob Mobile: 07811 340411

Building Warranties & Latent Defects Insurance
Independent Brokers

Ed@granitebw.co.uk
kelly@granitebw.co.uk
rob@granitebw.co.uk
www.granitebw.co.uk

New exciting developments for award-winning company - H.D. Services Ltd



In this issue of Building and Construction Review, we are proud to announce that we have chosen to recommend H.D. Services Ltd. for its comprehensive range of water, drainage, sewerage and heating services.

Based in Ashley Green, Bucks, H.D. Services Ltd. supply a selection of water, drainage, sewerage and heating services such as sewage treatment systems, borehole construction, ground source heat pumps, and water treatment. H.D. Services Ltd. maintains a well-trained and experienced team with over 30 years' experience in the industry. As a family run business with a strong stance on quality, the company is fully accredited and certified to MSC Standards, has associations with REA, RECC, GSHPA, The Well Drillers Association, BGS, National Custom Self-Build Association, Buckinghamshire Business First and is highly experienced in delivering successful projects and liaising with the Environment Agency.



In terms of recent developments, H.D. Services Ltd. is looking at a new leadership transition with its Directors hoping to retire within the next 12 months.

"Within the next two years, we are hoping to be in a position for the current Directors to retire in the confidence that the business will continue with minimal disruption and be in safe hands," stated Rebecca Taylor, Business Development & Compliance Manager.

H.D. Services Ltd. will also be looking to employ some kickstart apprentices as the company feels strongly that enabling young people to develop a career and interest in a developing utilities and sustainability market including renewable heating, is a good step forward.

The company also has many exciting developments upcoming, including a potential relocation into new offices over the Christmas period. The move will be within the same building, in the newly developed upper floor, to further support the company's growth and to provide new modern facilities.

In regards to long term plans, H.D. Services Ltd. hopes to be able to expand the Water Treatment side of the business within the next five years. Currently, the company offers water treatment as an option for those clients who are having a water supply borehole constructed, however in the future, H.D. Services Ltd. would like to be able to offer this as a standalone



service. In addition, H.D. Services Ltd. is also hoping to be in a position within the next 10 years, to be able to move the business from its current site to new premises, which will enable further expansion for the company.

In closing, Rebecca added, "We are an award-winning, family run company operating throughout the south east. We have been recognised by industry peers in the form of the Renewable Energy Pioneer Award.

The Renewable Energy Awards celebrated the 'Best of British' renewable energy and clean technology, across 15 categories, highlighting the efforts and amazing achievements of many companies and organisations. Having not knowingly been nominated, the award came as a welcome surprise to us - what better way to start off 2021 than being recognised for our hard work and dedication towards renewable energy."

Rebecca expanded, "Keep an eye out for us at the National Energy Efficiency Awards in February 2022, as we are entering the National Awards for the first time having achieved significant success at the regional awards over the last six years."

T 01494 792000
enquiries@thehdgroup.co.uk
www.hdservicesltd.co.uk



With over 30 years experience, we offer bespoke solutions for the domestic market across the South East. Feasibility can usually be determined upon receipt of a site postcode.

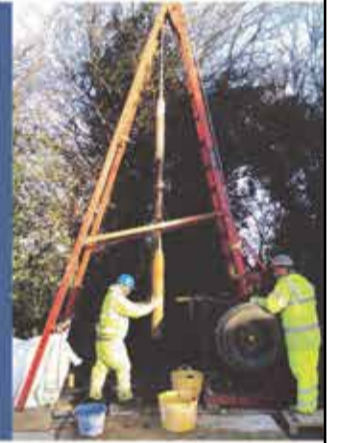
WATER SUPPLY & SOAKAWAY BOREHOLES; DRAINAGE SOLUTIONS & WATER TREATMENT

We could provide an independent water supply via a water supply borehole which could be used for irrigation, grey water or consumption*.

We construct soakaway boreholes, drainage fields & other drainage solutions.

We offer water treatment solutions including softeners, filters and UV.

*subject to analysis and suitable treatment.



RENEWABLE HEATING

Reduce heating bills by up to 50%.

Groundwater can be used as a heat source for an Open-Loop Ground Source Heat Pump which could meet all hot water and heating requirements, reduce the carbon footprint of your home and save you money.

The system could also be eligible for the governments Renewable Heat Incentive (RHI).

SEWAGE TREATMENT SYSTEMS

If you know you require a system but don't know where to start then contact us for an informal chat. Our extensive experience allows us to signpost you to the best option, whether that be our bespoke design service, or an off the shelf alternative.

Our bespoke systems are designed to meet the needs of individual clients and comply with strict discharge legislation.

Servicing contracts are offered for all our installations.



enquiries@thehdgroup.co.uk | 01494 792000 | www.hdservicesltd.co.uk

Concrete Channel with Basalt Fibres – New Era Begins for Hauraton

Hauraton makes concrete material even more efficient for modern drainage technology by enhancing the formulation with natural basalt fibres.

The addition of mineral or textile fibres increases maximum stability, strength, and impact resistance. By amplifying the impact resistance, the more robust and durable the product. This is particularly important for components that are exposed to considerable dynamic stresses, in this case, drainage channels subject to vehicles at high speeds or regularly trafficked by heavy loads.

Basalt Fibres: Natural and Sustainable

Hauraton's new era in concrete production by utilising basalt fibres has not only created a durable building material, but also one that is 100% natural. The basis of basalt rock are

available all over the world in large quantities which is formed naturally on the earth's surface. By combining basalt fibres with the well-known material concrete, both the structure and the service life of the product is increased.

Mineral Mixture: Easy to Recycle

Since the end product is a purely mineral mixture, there is no need for material separation during disposal. This protects the environment as it is simply fully recyclable at the end of the product's life cycle.

Convincing Strong Properties

Basalt fibres have outstanding properties. They can withstand temperatures of up to 800°C and are highly resistant to alkalis, acids, salts, oxidation and radiation. The effects of adding basalt fibres to precast

concrete element gives even more of a dimensionally stable, resistant and durable structure. Drainage systems made of basalt-reinforced concrete will assure longer performance.

Basalt Fibres are Versatile and Climate-Friendly

Basalt fibres are mineral fibres that have a higher melting temperature, better resistance to water, acids and alkalis, and more positive flexural strength. All this makes basalt fibres attractive in drainage technology, but also numerous other applications in construction. Given the stricter climate targets, the energy consumption during production also clearly speaks in favour of basalt fibres, as basalt has the lowest CO₂ footprint.

[Click here to learn more about FASERFIX](#)

FASERFIX CONCRETE: NATURALLY BETTER

With the best properties from basalt fibres.



Does your Resilient flooring have a hygiene problem?

At Bona we are passionate about finding new innovative flooring solutions. We have applied our expertise with coatings and maintenance products to create a totally unique program for caring for and maintaining resilient flooring effectively and with minimum disruption. Our high-quality Care program allows the ongoing maintenance of resilient vinyl, PVC, linoleum, and rubber floors to ensure continual performance, but also allows floors to be transformed when worn or degraded, rather than replaced.



Some resilient floors become damaged and heavily worn, often patchy in appearance. Traditionally this would be the point where the floor is replaced. However, with the unique Bona Recoating treatment, vinyl, PVC, linoleum, and rubber floors can be resurfaced quickly. This process can involve a complete transformation of the floor as it can be recoloured, using Bona Pure Colour, before protective layers of a transparent coating, Bona Pure or Pure HD are introduced. By renovating the existing surface rather than replacing it, a lengthy installation period is avoided along with the inconvenience of disposing of the old floor.

The Bona Resilient System can also be used for coating new resilient flooring, such as LVT, following installation. The primary difference with LVT compared to other types of resilient flooring, is the fine cracks between adjacent LVT elements. Resilient flooring such as rubber have welds where the sections meet, providing a continuous, sealed surface. This prevents moisture ingress but also renders the surface easier to clean and specifically, prevents microorganisms from occupying these

areas of the floor. Renovating ensures that bacteria and microorganisms are eliminated – even those hiding in joints, scratches, and other hard-to-reach areas. Independent testing verified that a smooth, joint-free LVT surface can be created using Bona Deep Clean and Bona Pure, securing a hygienic floor according to the regulations of Technical Rules for Biological Agents (TRBA).

We commissioned a study on the use of the Bona Commercial System on LVT flooring - typically used in hospitals and other hygiene sensitive areas. The test was carried out in conjunction with the IFR Institute in Germany. The purpose of the test was to prove that a smooth, joint-free surface, as set out in the rules of the German TRBA standard, can be created by over-coating with Bona Pure.

The first step of the test was to install a range of new LVT wood effect flooring. The next step involved dividing the test area into two sections and coating one with Bona Pure, while the other was left untreated. A solution containing fluorescent pigments was then applied daily across the whole floor and cleaned using the Bona PowerScrubber and Bona Deep Clean Solution. Daily contamination



with the pigments followed by cleaning was carried out over a period of 8 weeks. At the end of the test period, UV lights were used to expose the levels of contamination on each part of the floor. The part of the floor not treated with Bona Pure showed high levels of contamination. The part treated with Bona Pure showed hardly any.

To prove the test results further, the LVT planks were removed to examine for signs of contamination below the surface. On the untreated area, a high level of contamination was found below the planks due to penetration through the joints. However, the area treated with Bona Pure showed almost no signs of contamination thanks to its protective layer which seals each joint.

With increasing amounts of LVT being installed it is likely that customers are going to be keen to ensure the surface is as clean and hygienic as possible.

The Bona Resilient System offers a simple and effective solution, in addition to extending the life of the flooring itself.

Bona Limited
T 01908 525 150
info.uk@bona.com
<https://bona.com>



Climate-positive buildings. Sustainable manufacturing.

We only have one planet. So for future generations, when we build on it we must build respectfully and carefully.

TN International's TNOLOGY leads the way through joined-up thinking, advanced technology and specialist, greener solutions. Solutions that not only improve buildings' energy efficiency when installed, but repurpose waste materials when we manufacture them. Every year, TN International recycles the equivalent of 180 million plastic bags, 300 million plastic bottles and 500,000 tyres, not to mention 50,000 tonnes of waste glass and 40,000 tonnes of waste oil – all to make products that make buildings better environments for everyone.

We need our industry to be more environmentally friendly.

We'll do everything we can to get us there.

WATERPROOFING

INSULATION

SHINGLES

LIQUID PRODUCTS

ROOFING ACCESSORIES

GP Plastering Ltd

GP Plastering Ltd have been supplying plastering services for over 25 years in a nationwide compacity.

We specialise in Airless Spray Plaster Systems in the Healthcare and Educational sectors. As well as traditional to the domestic & commercial sectors.

We have a proven track record of delivery to budget and schedule on multiple projects and pride ourselves

on being able to blend into any site environment.

We have successfully handed over 64'000M2 this year

Please feel free to contact me personally on the details below. With any enquiries or questions.

T 07432 105988
tony.emmins@gpplastering.com
www.GPPlastering.com



History of Mirror Door Systems Ltd



Mirror Door Systems Ltd was established in 1994 as an independent company with over 20 years previous experience in stocking, bulk supplying and bespoke manufacturing sliding door systems to retail fabricating, project refurbishment and new home builders in addition to the public in general.

Initially with premises located in both Telford (Shropshire) and Billericay (Essex) it re-located its operations to a single- larger premises based in Wickford (Essex) during 2007 and has seen the company develop and further increase its product range currently to 5 sliding door systems with nearly 30 different colours, to choose from.

The company can demonstrate its accreditation to product and service, by holding an ISO 9001: 2015 quality assurance registration.

Product Range.
 Solitaire and Topaz. A traditional low-cost steel system available in a painted or Vinyl woodgrain finishes with matching top and bottom tracks up to 4880mm length. The profiles as with all the systems, are designed to accept in-fills of standard 4-8mm safety mirror, coloured glass or wood grain panels. Available in a variation of colours.

Tuscany. A modern aluminium system designed with high quality elegant profiles with matching tracks available up to 6.00 metres in length. The system incorporates heavy duty lower rollers with security locking and twin roller top guides to ensure safe operational performance. The system is further enhanced with the options of introducing mid rail profiles to create a variation in visual finish and the inclusion of soft closer to add that extra personal touch.

Cerroni.
 A new aluminium system that has been designed to achieve a movement that is lighter in operation. The system is unique in offering two different vertical profiles of 28mm and 33mm widths, whilst the top and lower tracks are just 56mm and 48mm respectively and available up to 6.00metres in length. The system is ideal for constructing and installing into a restricted opening depth. The system can accept the inclusion of mid rails and soft closers. Available currently in Platinum, Champagne and White gloss finished colours.

Diamond.
 Top of the range aluminium system incorporating high grade and volume profiles, mid rails and colour matched tracks up to 5.00 metres, all finished in high quality colour finishes. Design as with all the aluminium systems, to accept safety backed mirror, coloured safety glass and panels. The product can be constructed as a 'back to back' variation due to its heavy duty recessed bottom rollers, allowing for the sliding doors to be operated as room divider. Available in Matt and Polished colour finishes.

Made to Measure.
 All the sliding door sets are manufactured to customers individual design requirements at Wickford. On completion, they are individually QA checked and warranty labelled prior to being corner and side block protected and wrapped in clear polythene and made ready for despatch and delivered by dedicated fragile carrier on at mutually agreed delivery date.

Product infill information. Only safety backed mirror and coloured glass products are used that conforms to BS2606 class B / EN12600 and UK building regulations.

For further information, design or technical assistance please make contact via email or telephone where you can receive personal assistance.

T +44 (0)1268 573357
salesmds@mirrordoor.co.uk



GP Plastering Ltd
 Machine Plastering Contractors

Tel: 07432105988
 Email: tony.emmins@gpplastering.com
 Web: www.GPPlastering.com



With 20 years of experience within the commercial industry mostly within the Health Care and Education sector. GP Plastering prides itself on completing projects within time and on budget.

Airless spray plaster systems are fast becoming the application of choice within the plastering world. It is being requested in favour more than traditional plastering by most of our main contractors. The system reduces labour on-site by 75% with 1% waste. The material comes pre-mixed so there is no need for water and reduces dust by 90%. There is no visible scarring with patching. The product is white in colour so it gives the feeling of areas being finished.

"Whilst constructing a new 72 bed hospital on behalf of Wye Valley Trust in Hereford, with a construction value of over £13 million under a NEC 3 contract. I had the pleasure of having GP Plastering on site as the plastering contractor. Traditional plastering can be wet, messy and labour intensive. Slow drying with issues over the standard of finish/quality. What first struck me was how fast a small team performed. I was equally impressed with the quality of work this small team could get through and the of workmanship was excellent. The manner in the way Tony operated on site was helpful, professional and worked extremely well within the construction team and health and safety was paramount and was never compromised. I would without doubt have them on any projects going forward and would recommend GP Plastering without question."




- Ian Rodgers, FCIOB

Reflect your lifestyle with
Bespoke sliding doors



Transform your space with bespoke sliding doors from Mirror Door Systems Ltd. Established in 1994, the company is known for its quality, workmanship, and efficient delivery. We like to work closely with our customers to explore their ideas and come up with a bespoke solution just for them. With this level of service, it's easy to see why Mirror Door Systems Ltd is a leading UK provider of made to measure sliding doors. The full range now extends to 5 superb systems and 40 colours to choose from.

Contact Mirror Door Systems today on
 01268 573357, email info@mirrordoor.co.uk
 or visit the website for more information
www.mirrordoor.co.uk






**HIGH QUALITY
 PRECISION KNURLING**

BRITAIN'S FINEST IRONMONGERY
 Alexander & Wilks | 01228 516517 | www.alexanderandwilks.co.uk



Call +44 (0) 20 3750 5555

www.cubemetals.co.uk | info@cubemetals.co.uk

Harefield Grove Estate, Harefield, Uxbridge UB9 6JY

Structural & Architectural Metalwork Fabricators in London

At Cube Metals, our vision is to collect the best in fabrication technology from many fields and put it in the hands of our experienced craftsmen. We are at our best with unique, challenging projects that stretch the conventions of architectural construction.

As specialists in structural, architectural and agricultural metalwork, Cube Metals has created unique and 'state of the art' facility capable of delivering any type of project. Talented people with backgrounds in design, engineering, science and machine technology power of our workshop which offers services in metalworking.

Cube Metals were proud to have manufactured and erected over 120 tons of structural steel (including a lift shaft and the application of 1hr fire protection) to Tyler House, Brixton.



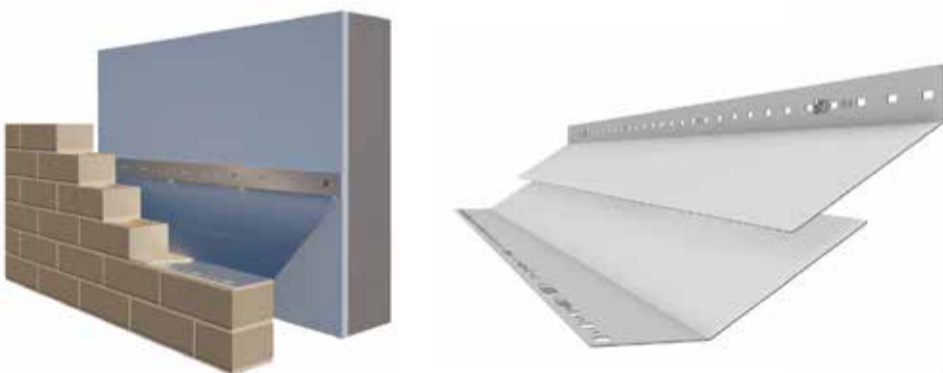
CODA Products Ltd
Construction & building products



CODA
tray
Bespoke
Cavity Tray
System



- Experienced
- Reliable
- Affordable
- Unmatched Quality



enquiries@codaproducts.co.uk
www.codaproducts.co.uk

Brichwood Green, Hitchin
Hertfordshire SG4 8NY
United Kingdom





STORAGE PROBLEMS?

We've heard it all.
Better yet, we've solved it all.

Get in touch with our Business Services team today to book your **FREE** consultation.

The trusted experts in space utilisation.



Scan me



BiGDUG

WWW.BIGDUG.CO.UK 0800 141 3380

Create the ultimate outdoor entertaining experience

Quan Garden Art are a premium outdoor entertaining brand, specialising in strikingly designed 'Fire Plate BBQ's' where you cook on a hot plate surrounding a fire-pit. Not only does this form of outdoor cooking take your barbecued food to the next level, it also provides a focal point for family and friends to stand around whilst enjoying a drink and conversation, making this the most social BBQ experience on the market.

The pandemic has certainly led to a significant increase in outdoor entertaining, and this trend looks set to continue. Quan are currently seeking to partner with property developers across the UK, to offer stylish and unique 'Outdoor Entertaining Packages' to prospective new homeowners.

Quan UK also offer a Professional range suitable for outdoor areas in restaurants and

hotels, where chefs can provide real theatre outdoors – as watching someone cook on a Quan Fire Plate makes for a mesmerising experience. These are products that will transform the way you BBQ!

Please contact Jon at Quan on: 07811 408688 for further info and see: www.quangarden.art for full product range.



PREDATOR TREE STUMP GRINDERS

Narrow access tree stump removal machinery - Get serious, get Predator.



Looking for your first stump grinder? From portable to tracked, Predator have the best access all-areas machinery to get you earning.

www.predator-mfg.com info@predator-mfg.com 01189 404 739

*Finance is available subject to credit acceptance; all applicants must be 18 or over. Hire Purchase: VAT is paid on signing. Lease: VAT is payable on each rental as it falls due. VAT charged at current UK rate at time of acceptance. Full written quotations are available on request. The promoted APR of 5% excludes administration fees, which under this agreement will include a documentation fee on signing and if all payments have been made, an option to purchase fee which will be taken with the final payment and you then own the machine. Figures are correct at time of going to press but are subject to change. This promotion is offered by Buckingham Leasing Limited, authorised and regulated by the Financial Conduct Authority FRN: 671552, Company Registration No: 4637226. Buckingham Leasing is a broker and a lender and may receive payment from the finance provider if you decide to enter into an agreement. Terms and Conditions apply.

Maintenance free solutions for decking and landscaping



Did you know that many real wood decks require full replacement within seven years of installation? This coupled with annual maintenance costs for labour and materials can make your wooden deck very expensive in the long run and if you are doing it yourself it's going to use up a lot of your time. Time that could be spent enjoying your garden instead.

A Gardening Express survey found that homeowners change their patio or deck six times over the course of their gardening lifetime at a cost of around £9000. Fortunately, if you are installing or replacing your deck there is a solution in the form of recycled plastic decking. A long-lasting alternative to wood.

Utilising plastic that would ordinarily be sent to landfill or incinerators, Kedel turn it into long lasting, maintenance free landscaping materials, with the look and feel of real wood but that can last a lifetime, so you just do the job once!

The slightly higher initial price of recycled plastic wood is quickly recovered through savings on maintenance or replacement, resulting in lower lifetime costs when compared to real wood designs. This initial outlay can be recouped in as little as 2 to 5 years. Recycled plastic decking is splinter free, frost proof, shock proof, resistant to most chemicals and impervious to fungi and water.

Kedel Marine Decking Boards can be used for various landscaping projects and are ideal for boardwalks, pontoons, jetties, access ramps and fishing pags.

For more information on any of Kedel's products and services, contact us today for help and advice.

T 01282 861325
info@kedel.co.uk
www.kedel.co.uk

Eco Clipper FM4 Sport for sporting grounds

Eco Clipper, known for electric mowers for the turf industry, has introduced a special version for the maintenance of sports and recreational grounds. The 4.11 m wide front mower features four independent cutting decks. For the FM4 Sport, the side decks can be folded in independently, allowing for narrow passages to be mowed.

The smooth decks with fast rotating small blades ensure a high quality cut and good clippings dispersion. The clippings are also spread well in wet grass. This makes it possible to schedule this mower almost independently of the weather.

The Eco Clipper mowers are further distinguished by the high

possible mowing speed. This means that on average a sports field can be mowed in less than fifteen minutes with an Eco Clipper FM4 Sport.

To operate the mower a 40 HP tractor is already sufficient. The electricity to drive the mower is generated by a PTO driven generator. For larger tractors, the generator can be fitted on the front mower. For smaller tractors and optimized weight balance Eco Clipper offers a separate generator unit for behind the tractor.

info@vanmac.co.uk
www.ecoclipper.com



Field management software that puts you in control, and your team to work



Re-flow field management software puts businesses back in control with real-time job, document and workflow management, showing you where your teams are, what they're working on and what information they're collecting. Re-flow eliminates the whirlwind of chasing emails, paper trails and continuous phone calls by utilising real-time job management and reactive workflows, based on a user's form completion.

Companies in construction, civil engineering, telecoms and fit out use Re-flow to track job progress, improve operational efficiency, save time, money and stay focused on getting the job done.

Create and send job information instantly to field users, including job coordinates, required equipment, plans, drawings, and all necessary work forms. Utilise powerful forms that enable you to capture digital signatures, GPS timestamps, photos, customised calculations, and trigger notifications. Build them to your specification with our easy-to-use interface, collecting data against jobs the way you need.

App users have optional access to a hub of company information, such as policies, equipment manuals, vehicle manuals, employee handbooks, and the ability to use their specific training certificates directly from the app. Re-flow works online and offline, whenever and whenever you need it.

Begin your digital transformation - contact us or book a live demo today.

<https://re-flow.co.uk/>

Re-flow
Field Management

'Dedicated to offer the best mowing system for maintaining large area turfgrass'

Eco Clipper FM4 Sport for sporting grounds
www.ecoclipper.com

ECO CLIPPER

ALL WEATHER ACCESS

Temporary Access Ground Protection

Successfully supplying the construction and civils industry for over 10 years

Hire or Purchase

Our Services Include

- Hire or purchase Trackway products
- Installation and de-rig
- Haulage to and from site
- Site surveys where required

info@all-weatheraccess.co.uk 01371 700 510

SUNSHADE SERVICES LIMITED

- Thousands of Design Options Available
- Up to 100% Shade Cover & 100% UV Resistance
- Bumper Pads Fitted as Standard
- Designed, Manufactured & Fully Installed

Specialist all-weather outdoor structures & shelters

01782 398848 / 07807 063734

info@sunshadeservices.co.uk
www.sunshadeservices.co.uk

Sunshade Services Ltd.

Heart Pods

Heart Pods based in Coventry design and build a wide range of Pods, Shepherd Huts, Garden Studios and other additional outside spaces.

Most recently, they launched their latest range in Garden Studios. These high-quality flexible spaces can be installed and ready to use very quickly.

Available in three sizes and specifications, they are built in a contemporary design with floor to ceiling windows and doors and are fully lined and insulated.

Whether you need office space, a gym, playroom,

bar, man cave or somewhere to escape and relax, the Garden Studios are a great alternative to an extension and at just under 2.5m high, in most cases, no need to apply for planning permission.

The Garden Studios are a great addition to the fantastic Pods and Shepherd Huts already on offer at Heart Pods. You can see the entire range on their brand new website at: www.heartpods.uk

To arrange a virtual show-round, call 01676 540333 or email info@heartpods.uk.



Hardscaping Solutions Ltd

With over 35 years' experience within the UK construction industry, the last 15 of these in the hard landscaping sector, we offer a wealth of knowledge to our customer base of architects, landscape architects and major UK distributors.

Our product range includes:

- Imported Natural Stone
- UK Natural Stone
- Concrete Street Furniture
- Scan Kerb
- Steel & Timber Street Furniture
- Handmade Terracotta Paving

Get in Touch!

Tel 07890 585768
info@hsl-streetscape.co.uk
www.hsl-streetscape.co.uk

Severn House, Hazell Drive, Newport NP10 8FY



Rope playground nets and bridges



TAYPLAY opened for business in 1994. Based in Perth, Scotland, we quickly established ourselves as a friendly, reliable supplier of premium rope net products, such as our best-selling Activity Net range. Most members of our small team of 18 have more than 10 years' service with the company, many have 20+ years. We are a global supplier, priding ourselves in our high-quality customer service & products.

We are versatile, creative & can meet all customer expectations; from the simplest connecting rope, cargo, or climbing net, to major custom design projects.

We work with, & have, long standing relationships with the majority of play and installations companies across the UK. Although we are predominantly a trade supplier, our aim is to ensure you have the right product for your specific needs. We can assist at the design stage, if required, via the expertise of our Design Manager, Andrew Little, & his team.

We have been involved in developing many custom projects, both worldwide, & in the UK. Recent examples include sections of the rope play equipment supplied for the new BeWILDerwood children's forest play experience in Whitchurch, Cheshire (www.bewilderwood.co.uk), along with the newly refurbished Planet Play area at the Kennedy Space Centre visitor complex in Florida. The home of NASA!

Andrew collaborated with the US team, designing multiple nets. Our Production Team manufactured them, & they fitted to perfection. No mean feat working remotely on a project so technical in layout, & which included several challenging design elements, & unusual shapes. The Vortex Floor Net has over 201 unique rope lengths, along with 5,000 cross joints, not to mention the deep space 7 metre long Black Hole & 7 metre high Pluto & Mars Tunnels.

TAYPLAY'S nets provide children with real life experiences, in an exciting, yet safe & controlled environment. Climbing helps develop their spatial awareness, cognitive & motor skills. The challenges also encourage & develop problem-solving skills, within the context of secure, imaginative play. Whatever your customer's expectations, TAYPLAY can take their concept from the drawing board right through to the playground!

T +44 (0)1738 449084
info@tayplay.com
www.tayplay.com



Kondor Pods

Kondor Pods design and manufacture modular shower rooms and bathrooms for the student accommodation, hotel and residential markets in the UK and overseas. Utilising our extensive experience, we have developed products completely unique within the market place. Truly modularised solutions that are easily adapted to suit individual requirements, manufactured in our factory controlled environment and delivered to site as fully assembled units.

This includes our newly developed 'SIPS' pod

system for bespoke designs providing a CNC precision engineered structure with exceptional sound and thermal performance yet typically 30% lighter compared to steel structures. Our 'Black-Box' pod system is a more cost effective solution for lower end specifications, functional, robust and low maintenance ideal for the student accommodation market.

The 'Black-Box' system is also available as a flat-pack solution for quick and easy construction on site making them ideal for new-

build and refurbishment schemes alike. Kondor provide precision engineered, functional, lightweight and robust customisable pod systems like no other. The new, light-weight thin slate pod we have proto-typed and recently exhibited at the 'Offsite Expo' demonstrates our skills and innovation recognised by the 2021 Design & Build Awards, receiving the accolade of 'Leading Innovators of Sustainable Modular Offsite Bathroom Pod Design.'

www.kondor-pods.com



Slowing the sands of time



The global sand industry is running out of time, and the UK landscaping market must seek alternatives or see profits slip through the cracks.

50 billion tonnes of aggregate are used annually[1], and global population growth, urbanisation, and development are driving large increases in international demand for sand and other aggregates. Riverbeds and shorelines worldwide are disappearing due to increased sand piracy and the escalating trade in black market sand.

Azpects Ltd has developed a solution to the aggregate problem when creating patios, paths, and driveways. EASYClickBase is a synthetic sub-base that revolutionises the traditional dig-out stage of installations, saving time, money, and aggregate. EASYClickBase reduced excavation by 75% and replacement aggregate by 80%[2] in tests on a 50m² domestic vehicular driveway.

EASYClickBase replaces the traditional full mortar laying bed, limiting the need for sand and cement. Thin surface dressings, such as porcelain tiles, can be glued directly to the sub-base, while block paving can be laid on a thin layer of bedding sand. Made from 100% recycled plastic, EASYClickBase has the potential to significantly reduce the environmental impact of landscaping projects.

Contact
<http://azpects.co.uk>

[1] <https://www.bbc.com/future/article/20191108-why-the-world-is-running-out-of-sand>

[2] Figures are approximate and dependent on site conditions.



SIPS TILED PODS
STRUCTURALLY INSULATED PANELS

Bespoke Designs
Future Proof
Quality Brands
Upto 70% Lighter
Recycled Materials
Built for Longevity
Flat Pack Options
Made in the UK

DOWNLOAD THE BROCHURE

BLACK BOX PODS
ACRYLIC CAPPED ABS

www.kondor-pods.co.uk
sales@kondor-pods.co.uk
 +44 (0)1482 353811

Kondor Pods

Speak with our designers today to discuss your next pod project.

A SUSTAINABLE ALTERNATIVE FOR A STABLE SUB-BASE

SAVE

EASYClickBase significantly reduces time, labour and cost.

REDUCE

EASYClickBase reduced excavation by up to 80% in early test sites.¹

RECYCLE

EASYClickBase is manufactured from 100% recycled ABS plastic.

¹ Data from 50m² domestic driveway test site. Site conditions will impact results.

azpects.co.uk | easyclickbase@azpects.co.uk

Zoo Architectural Hardware

Zoo Hardware are designers and suppliers of architectural door hardware including door handles, knobs, locks, cylinders, door closers, hinges and more. All of their products are produced to the highest quality in aluminium, brass, steel and zinc. Every item they produce is selected for its quality and value for money and they never compromise quality for cheaper prices. Zoo Hardware are confident in their belief that they can offer some of the highest quality products at the most competitive prices on the market.

Their in-house design team is fully qualified in all aspects of design and production and they

constantly aim to supply innovative, stylish and cost-effective hardware solutions settling for nothing less than top quality. Design facilities at their head office means they can create, manufacture and deliver state-of-the-art products to stay in-tune with current design trends and ahead of the competition.

The Zoo Hardware product ranges cover all aspects of architectural ironmongery, including: Vier – a precision design range of levers, hinges, door closers, DIN locks and cylinders created for the exacting needs of Architects, Specifiers and Contractors; Fulton & Bray – traditional and

classic brass door hardware and accessories ideal for period and contemporary properties; Rosso Tecnica – a new European inspired range of designer levers and accessories made from SS304 and finished in a selection of new hard-wearing finishes; and Foxcote Foundries – a wide range of traditional black antique door furniture and window fittings.

View their full range of products at: www.zoohardware.co.uk or call one of their friendly sales team on: +44 (0)1228 672900 to discuss your requirements or to request a catalogue.



cloudcam
SURVEY | PHOTO | VIDEO

National drone related services from survey to video production
Survey, 3D Modelling & High End Virtual Tour Packages
Timelapse / Progress Videos
Search & Rescue
Film & Television

Fast response and quick highly accurate results
A dedicated team of ground-based production crew and editors

www.cloudcamuav.com
enquiries@cloudcamuav.com

ROSSO TECNICA
ACCIAIO CON STILE

ROSSO TECNICA is our new and exclusive range of European inspired designer levers. Manufactured from Grade 304 stainless steel and finished in a new selection of stunning hard-wearing finishes, these levers are the perfect accompaniment to the latest trends in interior fashion.

AS PART OF OUR ONGOING COMMITMENT TO REDUCE OUR IMPACT ON THE ENVIRONMENT, THE ROSSO TECNICA RANGE IS SUPPLIED WITHOUT ANY PLASTIC PACKAGING. NO POLY-BAGS ARE USED IN THIS RANGE.

T: +44 (0) 1228 672 900
E: sales@zoo-hardware.co.uk
W: www.zoohardware.co.uk

Rosso Tecnica is part of Zoo Hardware

Fabsec's new partnership with Bentley Systems Inc. has synchronised FBEAM and Bentley's RAM Structural System



It's estimated that over 70% of all multi-storey buildings use steel framed structures as their preferred method of construction. Cellular beams have long complimented this preference and are an established design solution incorporated by engineers and building contractors alike.

Fabsec's new partnership with Bentley Systems Inc. has synchronised FBEAM and Bentley's RAM Structural System, further enhancing the interoperability functions within the FBEAM software. The update provides an import / export feature that allows seamless transfer of data, increasing productivity whilst de-risking the handling of design data.

RAM states: The RAM Structural System allows rapid creation of the entire structural model, including the floor and roof framing and loads. It determines the distribution of those design loads to the members, including the consideration of the code-allowed reduction of imposed loads. Those geometries and design loads can then be transferred directly to FBEAM to enhance the efficiencies of the design in ambient and fire conditions. Because of the automation, any subsequent changes in framing can be quickly and easily accommodated.

Intuitive design software not only improves engineers' workflows, making them more efficient, it also encourages them to explore any number of options surrounding the design, all of which can be reviewed easily. Fabsec FBEAM® software is free to use in the UK to design primary and secondary floor beams, as well as rafters.

With margins in industry already lean, FBEAM automation can facilitate the assessment of multiple plated cellular beams. FBEAM can either optimise for minimum weight or take a holistic view considering the cost of the Firetex intumescent paint as well as the raw materials associated with the Plated Cellular Beam, ensuring that the most economic, sustainable, beam design is realised.

To realise the benefits above you can download the latest version from www.fabsec.co.uk. Should you require any introduction to the software / ongoing support queries you can contact our free technical advisory service at support@fabsec.co.uk.

FABSEC® Cellular Beams Utilising FBEAM® Software

- Trusted by hundreds of steel designers across the UK and globally.
- Industry-leading cellular beam engineering software considering both ambient design and fire engineered solution.
- Now with import/export routines with Tekla TSD and Bentley Ram Structural System, along with an open XML file and CSV file interoperability.
- FABSEC® offers market-leading optimised cellular beam designs with unrivalled cell geometry and locations.
- Front runner with the first integrated commercial optimiser incorporating fire engineering for cellular beams with up to 2hrs fire rating accredited.

Start improving your projects performance and efficiency today with our free UK FBEAM® software - www.fabsec.co.uk

thermafleece
Sheep's Wool Insulation

Safe • Healthy • Breathable • Sustainable
Insulation for Lofts, Floors & Walls

www.thermafleece.com
017684 86285

BRITISH WOOL BLEND
MADE IN BRITAIN

Spiral UK create a 6 storey helical staircase in the heart of London



of the treads. It is no-expense-spared details such as these that make for such a polished finish, where these contemporary stairs look like they have always been a part of the fabric of the building yet manage to integrate modern features.

A study in luxury, the bespoke interior has a stylish, timeless elegance celebrating its historical significance and highlighting opulence and exclusivity. The fit out could not have been any higher in specification and the result is

perfection. In the middle of this we installed our helical feat of engineering for private equity firm, Cinven, who made the upper 6 floors their headquarters.

Overall, we are very proud of the outcome and pleased to have been a part of the on-going history of this iconic building.

T 0330 123 2447
info@spiral.uk.com
www.spiral.uk.com



Spiral UK were pleased to create an incredible helical staircase through the centre of a central London building, built to look like it was part of the original structure but standing out for its subtle detailing and strong form.

The Grade I Listed building at 21 St James' Square was the work of The Ritz designers, Mewes & Davies, in the 1930s, who mirrored number 20 next door, emulating the work of esteemed British architect, Robert Adam, from the 1770s. In 2018 it went through a substantial and thorough redevelopment to become an exclusive and opulent office building.

One of the most expensive postcodes in the UK, the previous inhabitant list reads as a 'who's who' of British history, with even the Queen Mother of Elizabeth II residing there from 1906 to 1920.



That is why Spiral UK were honoured to be contracted for the feature staircase that winds its way up through the centre of the old building. A stair of this height is ambitious in itself, but this design was helical in nature, bringing with it a host of engineering and fabrication challenges. Helical stairs appear to be defying gravity as they arc through a space and cause tension points where they tether to a structure.

This particular design allowed for hidden support in the surrounding wall, the mild steel structure cantilevering out leaving an atrium space down the centre of the stair, adding drama and wow factor. Gazing up from the ground floor, the dark balustrading contrasts with the white plaster work, accentuating the shape as it spirals upwards. The outer handrail is underlit by LED lighting cleverly concealed within the timber, mirroring the strip-lighting that curves around the edge of the soffits and reflecting off the brass nosing strips set into the vein cut Silk Georgette stone

Built different.



Alternative, sustainable warehouse solutions

Rubb's flexible storage solutions are the perfect tool to help companies optimise their growth and profitability. Rubb's innovative fabric-engineered structures offer proven solutions for a wide range of warehouse requirements. Our large clear spans and high translucent ceilings provide a bright, efficient working environment. Rubb structures are built to last, but are fully relocatable and extendable to meet changing needs.

To learn more about Rubb, visit our website or contact the team today.

info@rubbuk.com | +44 (0) 191 482 22 11 | www.rubbuk.com



excellence in engineering

Rapid Access Ltd

Rapid Access Ltd was founded in August 2008 in the heart of England. With over 25 years experience operating over three facilities, designing & manufacturing access panels for Walls and Ceilings.

We offer the quickest manufacturing process on the market when it comes to ordering our products. From next day delivery on our stock Flipfix range to a competitive lead time on our other products which consists of riser doors, loft hatches, meter over boxes

and bespoke access panels. Rapid Access Ltd provides a high quality service in a wide range of panels including metal face, plasterboard face, ceramic tile doors and plastics in various sizes and specifications.

With our unique Fitting Device, Mitreless Frame and new Flush Lock system, our Flipfix Range of Access Panels are 5 times quicker to fit compared to a traditional panel, saving 80% on fitting costs as there are no screws or glue required and no need for bracing or

supports just cut, fit and flip.

Innovators of the RapidFit hinge system on our riser door range, working on a spring loaded pin hinge. Meaning installation of the door, once the frame has been installed, is much quicker than a door supplied with a traditional piano hinge.

T 024 7632 8811
sales@rapidaccessltd.com
www.rapidaccessltd.com



FLIPFIX | Discreet Cap-less Flush Lock

Fits 80% Quicker than traditional Access Panels!

- 2 Hour Fire Rated
- NEW Cap-less Flush Lock
- Mitreless Picture Frame
- NEW FlipFix Fitting Device

- ✓ 80% Faster Fitting
- ✓ Available Beaded
- ✓ Easy to Fit
- ✓ No Extra Materials Needed
- ✓ Fire Rating
- ✓ Extra Lock options
- ✓ Durable
- ✓ Hole cutting Template (stock sizes)

Tel: 024 7632 8811 | Email: sales@rapidaccessltd.com | Web: www.rapidaccessltd.com ACCESSMADE EASY

ADSA Welcomes New Apprentices



The Automatic Door Suppliers Association (ADSA) has welcomed a second cohort to its Powered Pedestrian Door Technician Apprenticeship delivered by South Staffordshire College.

The group of 16 met for their first classroom session at the Tamworth campus at the end of September... following in the footsteps of cohort one which has begun its final year of study.

Said ADSA Managing Director, Ken Price: "We are delighted to welcome students to the second cohort of the PPD Technician Apprenticeship in Staffordshire. We now have a total of 26 apprentices progressing their study at the start of their careers within the industry.

"In creating the apprenticeship, we sought to bridge a skills gap for the industry and develop a future workforce that would put quality standards at the heart of its delivery. We are pleased that the sector has responded so positively. It is clear that there is an appetite to invest in the development of those coming into the business.

Cohort two includes newcomers from Access Solutions Northern Ltd, Bolton Gate, Entec Door Services, MGS, Kone Cranes, JWL Doors Ltd, ADC, Record UK and Crucial Engineering.

"The apprenticeship is available to all industry-related companies, not just ADSA members," adds Ken. "Our mission is to promote the highest standards in the manufacture, specification, installation and service of automatic doors and that applies to everyone involved in it."

Among the new starters in a familiar face from the world of automatic doors. Steve Rutherford, who has more than 20 years' experience in the industry, has been appointed by the college as apprenticeship practitioner – delivering sector-specific skills and understanding to those on the course.

Across the Irish Sea there has been further good news. The PPD Technician Apprenticeship has been green-lighted for delivery in Northern Ireland through the South Eastern Regional College (SERC), in Downpatrick. It will offer the two-year, level two, apprenticeship with the opportunity to extend it to a level three qualification with a further year's study in electronics.

Funding streams have now been put in place to enable employers to tap into support for employed pathway apprenticeships. Enrolment is now underway for the first Irish cohort to start early in 2022.

"We are excited to announce our partnership with SERC and offer apprenticeship opportunities to businesses in Northern Ireland and Eire. It makes sense to extend provision geographically so that apprenticeship courses can be delivered more conveniently and cost-effectively in Ireland," stated Ken.

Contact
 T 01827 216136
rachel@adsa.org.uk

Insaawlator™

CUTS INSULATION EFFORTLESSLY

INSAWLATOR

- FREE BLADE SHARPENING TOOL SUPPLIED
- UNLIMITED SHARPENING FOR CLEANER CUTTING
- VIRTUALLY NO PARTICLES WHEN USING
- CUTS MOST INSULATION (PU BOARD UP TO 100MM)

WWW.INSAWLATOR.COM P&P

A developer's first steps in to Passive Haus, path finding into a helpful community...



First steps

The Passive Haus Institute had a huge influence on developing the company's vision and to show the institute the companies support is one of the Pure Haus goals. The principles to work to were very consistent with the company's ethos for sustainability, quality, health and comfort. Taking pride in your home and local community was at the heart of our long term vision; Building Stylish and Sustainable Communities.

Values Driven

After committing to the goal of reducing the carbon footprint of the built environment the affect was so substantial Pure Haus found themselves promoting Passive Haus to anyone who would listen to them, there was a new buzz within the company. The first challenge was naming the company.... Pure Haus emerged the winner. Implying a German inspired house builder with a goal of making the world a cleaner, healthier place. The second goal was to identify the people who can help remove assumptions from the equations and replace them with facts.

Working with like minded people

Aligning with like minded people, who demonstrate this enthusiasm by going above and beyond our expectations, is the driver of this business. Our Builders have taken time to travel and see other sites under construction to learn a new skills, to say they are excited about timber framed housing and its potential would be an understatement.

Working to this standard is an opportunity that's rare; for them to be given a chance to do something worthwhile, get paid, and leave a legacy appealed to them!

Future challenges

Having secured relationships with financiers and landowners the biggest challenge moving forward is to have the operations of the company scaled up to match the ambition of the company.

www.purehaus.co.uk

Goland Recruitment

Goland Recruitment was established in 2012 to provide the Recruitment Industry with "Quality Driven Recruitment".

At Goland Recruitment we are confident we provide a service second to none.

We are hands on and work closely with our clients and candidates to ensure that the best service is delivered to fulfil both their expectations and requirements.

Making sure that each of our clients and candidates receive the most professional service we can offer. This approach is embodied in our company ethos of providing "Quality Driven Recruitment".

Goland Recruitment is committed to sourcing people who are genuinely interested in what they do. We realise costs are important, so we strive to offer the best value for money and costs that are totally transparent with no hidden extras.

Contact
www.goland.group






Building The Future. Offsite.

Vision Built specialise in the design, manufacture and installation of sustainable panelised and volumetric modular light gauge steel frame building solutions.

FOR MORE INFORMATION:
EMAIL: INFO@VISION-BUILT.COM
PHONE: +44 203 4113648



STEEL BUILDING SOLUTIONS

+ SINGLE SKIN + COMPOSITE + ROLLER DOORS + WINDOWS +



INDUSTRIAL



AGRICULTURAL



DOMESTIC

+ SKYLIGHTS + PERSONNEL DOORS + INSTALLATION OPTIONS +

GET A FREE ON-LINE QUOTE AT

WWW.CSBUILDINGS.CO.UK

OR CONTACT US ON

01302 301402

INFO@CSBUILDINGS.CO.UK

Heat Pumps: A 'no-brainer' for self and custom build homes.

If you're building a new home or creating your dream barn conversion, there's not usually much excitement surrounding choosing the heating system.

They just don't get homeowners blood pumping in quite the same way as a new kitchen, that glass balustrade or the latest Farrow & Ball colour chart!

But with an impending ban on gas boilers from 2025 to help reach the Government's target of net-zero emissions, coupled with the real possibility that all homes who have a gas boiler could face a dreaded 'carbon tax' at some in the future; a financial penalty that aims to bring under control the fact that 14% of UK greenhouse gases come from our homes, then installing a heat pump now really is the common-sense option.

For those involved in self or custom builds installing a ground, air, or water sourced heat pump will not only provide for 100% of the heating and hot water needs but will future proof your new home from fossil fuel price rises or penalties. In addition, the current financial incentive from the government in the form of RHI Scheme means that most, if not all, of the cost of installing is paid back to you over 7 years.

And for some homes on new plots, the savings based on not having a gas connection brought to site can run into the thousands!

If you're doing a new build (or a significant renovation), it's the perfect time to install these systems as you don't have the added hassle, or cost, of re-designing the radiators or

underfloor heating system, because you're installing from scratch anyway.

IMS Heat Pumps clients have been future proofing their homes for over 20 years. We work with you, your architect or main contractor to specify the right system for your home. For custom builds and renovations, right now heat pumps really are a no-brainer!

IMS Heat Pumps Limited

Contact
T 0114 327 100 / 01738 827 244
contact@imsheatpumps.co.uk
www.imsheatpumps.co.uk



Specialist in large section timber, irregular sizes and long lengths. Sections 600 x 600 and lengths to 15m

Planed, treated timber, railway sleepers, tile battens, arris rail, feather edge boards, telegraph poles, glulam and more

WARDELL LONG LENGTHS

Tel: 01469 532922

info@longlengths.com www.longlengths.com

TimbaBuild

A family-run Cornish business based in Newham & The Port of Truro, Cornwall.

TimbaBuild, which specialises in everything timber-related from timber framed houses, garden features, Furniture and decking, provides full design, planning and construction of a client's project, creating a strong relationship with customers to create the best finished product for them.

Paul Harvey, owner and director of TimbaBuild, said: "We operate an open door policy, where we invite the client in to view their project during manufacture, we listen, advise and discuss every part of the project.

Priding themselves on a dedicated customer service, TimbaBuild's team keep clients up to date with every element of their build thanks to a dedicated online portal, which includes invoices and quotations, as well as a finance tracker, enabling them to see where their money is being spent.

Paul said: "A daily diary is also kept, so that the client knows what has been accomplished per day, every day. In many instances, we offer a time lapse camera service, and present it to the client at the end of the project, completely free of charge."

Paul added that this combination of great customer service and quality finished products, has resulted in the continued client list returning time and time again.

Contact
Info@timbabuildstructures.co.uk
www.timbabuildstructures.co.uk



UK established materials handling providers

At Building and Construction Review, we are dedicated to showcasing companies who offer the highest quality services in their field and who have an acute focus on excellent customer service. This is why we are proud to feature Davison Forklift Ltd for our BCR Recommends profile, for its reliable, specialist services in the hire and sales of forklift trucks.

For the past 42 years, Davison Forklift Ltd has firmly established itself in the material handling sector and has a team of trained forklift engineers that carry out on-site repairs, servicing and health checks. The company specialises in the hire and sales of forklift trucks and is the authorised dealers for Clark and Ausa. With extensive on-site facilities, Davison Forklift Ltd offer servicing, reconditioning and repairs to machines.



Founded by John Davison back in the mid-sixties, Davison Forklift Ltd was born out of his frustration of not being able to find a suitable forklift for his planting business. Year on year the company grew and under John's guidance became a Ltd company in 1976.

Since, it has explored new sectors and moved its attention into the hire and sales of new product ranges. By expanding its product range, its ability to



manoeuvre into new sectors has enabled Davison Forklift Ltd to enter higher markets and develop a broader customer base.

Recently the forklift industry across the UK has become very buoyant, seeing lead times reach in excess of up to 30 weeks wait for delivery from manufacturers. This is a global issue which could be endured until 2022. Davison Forklift Ltd has predicted a modest strengthening in the market for the sector despite the effect of COVID-19 and various other industry issues and switched to a more forward-thinking approach.

"We are expecting 20 forklifts to arrive soon. It is difficult as we have to plan a year ahead, which is something we have never experienced before in this industry – even the second-hand market is few and far between. We have had to overcome obstacles in order to keep the business thriving but also look into new areas in which we could exploit and grow into." Stated Adrian, Director.

As a reaction to the current forklift market, to move forward effectively, Davison Forklift Ltd has changed its approach to buying in new forklifts for sale only.

Offering more flexibility, Davison Forklift Ltd has turned its attention to the hire and sale of tractors and telehandlers. The company offer two telehandlers: JCB 540-140 and JCB 535-125. JCB's total commitment to its products and customers has helped it grow from a one-man business into Britain's largest privately owned manufacturer of telescopic telehandlers and industrial forklifts. Both come with the latest technology and advanced design providing low fuel consumption, reduced noise, high torque and power output, total reliability and minimal maintenance.

Davison Forklift Ltd has one tractor manufacturer available for hire and is proud to stock the New Holland T7.210. For over a decade, New Holland has been

established as the Clean Energy Leader for its active promotion and development of sustainable agricultural technology, offering solutions that improve efficiency and productivity, while respecting the environment.

Even though the forklift industry hasn't been as strong as previous years, it is the core of the business, and the sale of these machines was its traditional

wheel forklifts has capacities from 2.0 to 3.2 tonnes and 48 Volt technology. The machines are reliable, environmentally friendly, and all round suitable for both indoor and outdoor use. In many applications, these trucks are in no way inferior to a combustion engine in terms of performance.

As of January 2021, Davison Forklift Ltd moved its fully



birthing. As the company expects predicted growth in the forklift market for the future, forward planning has enabled them to have worked closely with its dealership with Clark, for their new EXPi range of lithium iron electric forklifts. The company has been heavily involved in the promotion of this new range and is excited to see the reaction within the electric market. The EXPi range of electric four-

equipped workshop to a new premises near Telford, Shropshire. With 40 acres of land to utilise, upon planning permission being granted, Davison Forklift Ltd plan to build a mini business park which will house a complete redevelopment with space to hold new machinery as it opens its doors to new territory, focusing heavily on North Wales and Shropshire regions.



On the 25th of August 2021, Davison Forklift Ltd will attend the Stafford County Show, which is an agricultural show where the company will showcase its forklift, tractor and telehandler machinery. This is an opportunity for the company to reach new clients and deep dive into the farming industry, where it will stage its machinery to corn merchants and arable farmers.

Davison Forklift Ltd is an industry leader, offering everything from material handling, new forklifts, long and short-term machinery hire and service. Davison Forklift Ltd give a thorough examination of each forklift purchase, giving it a lifelong maintenance guarantee.

For more information, see below.

T 01952 915060
sales@davison-forklift.co.uk
www.davison-forklift.co.uk