

Best Practice



Issue 657 | Oct/Nov 2021 | 0121 725 1587 | www.bestpracticeuk.co.uk

Quiet down with SDS

Sound Damped Steel (SDS) is a multi-award winning noise control company, which was founded by Les Thompson in 2003 with the main ambition being to develop, manufacture and supply materials for industrial noise and vibration control applications.

SDS manufactures and supplies highly damped materials, complete kits and components that have been specifically created to solve a wide range of noise and vibration control problems, as a cost efficient solution.

These include both OEM applications where the company's materials can be built-in by design plus retro-fit

materials and kits of parts which are used to reduce noise on existing plant and machinery.

SDS maintains an extensive amount of experience, drawing upon its over 30 years' of experience in developing new and practical applications for the technology, across an expansive range of projects. Its technology is designed with adaptability in mind and is used to help both end users and leading noise and vibration control consultants, solve their noise and vibration problems.

For more information, please see the details below.

T +44 (0)191 259 0700
www.sounddampedsteel.com



RSS260 safety sensor with new cost-saving features

The Schmersal Group has further developed its compact RSS260 safety sensor and equipped it with new software – the sensor now offers four additional, optionally selectable functions:

- ▲ Feedback loop monitoring
- ▲ Automatic restart / manual restart
- ▲ Reset
- ▲ Emergency stop monitoring

On the FO/FI version, the RSS260 assumes the tasks of a safety relay module, i.e. monitoring of the movable safety guard as well as of the contactors directly actuated by the sensor outputs – monitoring is carried out by the integrated logic in the sensor, rendering a separate evaluation device unnecessary.

On the FO version, the machine restarts automatically as soon as all safety guards have been closed. An additional 'enable button', without edge monitoring, can be switched into the feedback loop. The FO version is suitable for small machines without a protective space that can be accessed behind.

The FI version is recommended for smaller systems, where the hazardous area can be accessed by the operator, as it has a reset function. The edge-monitored reset button must be pressed before the machine is restarted – when it is clear that the system is in a safe state and that no one is in the hazardous area. This function is consistent with the 'manual reset function' in accordance with EN ISO 13849-1.

The RSS260 with Q function is

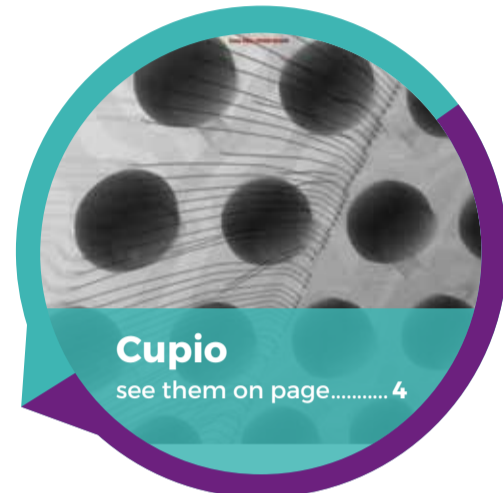
suitable for machines where the use of an EMERGENCY STOP switch is compulsory. EMERGENCY STOP switching elements integrated into a series circuit can be monitored by the Q function in the last sensor of the chain. This eliminates the need to install a separate safety circuit for the EMERGENCY STOP switches. The EMERGENCY STOP switching elements monitored by the Q function meet the requirements up to PL e. A reset button is required here as well, as no automatic restart of the machine is permitted after an EMERGENCY STOP command has been reset.

Additionally, the RFID safety sensor offers a number of positives, even in the standard version: with its compact dimensions (40 x 18 x 30 mm), the RSS260 with matching sensor-target combination is suitable for mounting on aluminium profiles as well as for use on many other door formats such as the common perspex doors and panels. The sensor has both an AS-i-Safety-at-Work interface and an interface for the Schmersal SD bus. The serial diagnostic function (SD) enables series connection of up to 31 safety sensors and solenoid interlocks, as well as the transmission of non-safe diagnostic and status data for the connected devices.

www.schmersal.co.uk



Download on the
App Store



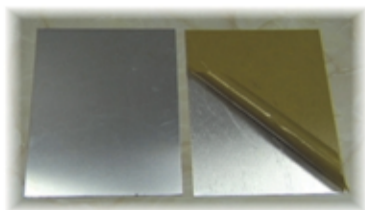
Cupio
see them on page..... 4



Sound Damped Steel
see them on page..... 5

Noise Controlling Metals Manufacturing Quiet

“sds – performs like metal,
sounds like rubber...”



OEM design
retro-fit noise
control kits
materials
components

Conventional metals are efficient loudspeakers, radiating noise. sds manufactures highly damped quiet metals that don't radiate noise. Simply swap your noisy metal for quiet metal and reap the rewards. galvanised, stainless, aluminium, combinations...

Effective, rugged, hygienic and low cost
Noise + vibration control made simple

sound
damped
steel

+44 191 2590700
sales@sounddampedsteel.com
Les Thompson
+44 7513 908060

www.sounddampedsteel.com/

QUICKLINE

VERTIMAG VLM - Reduce your footprint by 1/10th

The innovative Vertimag Vertical Lift Module (VLM) storage system maximises the height of the warehouse whilst reducing the footprint by 1/10th.

The result? Increased picking productivity, reduced handling errors, maximised product security and improved stock management.

Visit www.quicklinestorage.co.uk or call 0113 880 0866 to find out more.

Quickline are exclusive UK suppliers of Ferretto systems



Unisig
see them on pages 12-13



Vistaplan
see them on page..... 16

Industry Expert Casella Launches Most Technologically Advanced High Flow Pump in the Air Sampling Market



sampling and further simplifying the reporting process. This remote access facility makes monitoring and data collection easier and faster, while providing additional traceability.

"Casella has a long history of manufacturing air sampling pumps and the Vortex3 completes the family," says Tim Turney, Casella Global Marketing Manager. "The Vortex3 brings genuine innovation in

terms of new technology and ease of use, designed to save time for those working on-site with air sampling pumps."

www.casellasolutions.com

Asbestos-related diseases take the lives of 20 tradespeople every week. Despite being banned in the UK, asbestos can still be found in older homes and industrial properties built between the 1950s and 70s, posing a threat to anyone who disturbs the dangerous material.

Global occupational hygiene and workplace hazard monitoring expert Casella has launched the Vortex3, the



most innovative high flow pump on the market, designed to simplify asbestos and air sampling.

Continuing to fulfil its mission to improve health in the workplace and community with life-changing monitoring technology, the high flow pump offers a flow accuracy better than +/-5%, ensuring consultants, contractors and specialists have confidence in results.

Using Casella's patent-pending, interlocking design, the Vortex3 has an ergonomically comfortable handle and weighs just 2.17kg, allowing users to carry multiple units in one hand with ease.

The Vortex3 has an IP65 rating, providing protection from dust and water ingress. Casella's ergonomic design has ensured the high flow pump's smooth body finish is free from small crevices that could hold fine airborne asbestos fibres, allowing for safer decontamination and cleaning.

Built to impeccable standards, the Vortex3's two and a half hour at 12L/min with a typical filter ensures continuous performance. Available in two versions, the Vortex3 Pro model is compatible with Casella's innovative Airwave App and Bluetooth connectivity, enabling users to remotely start, pause or stop a measurement run, monitor battery life and memory capacity and check measurement progress direct from a mobile device.

Data can be emailed alongside photos and site details, adding context to the

Health & Safety News



Protection against cut hazards, cold & water.

EN ISO Cut Level **E**



Water-Repellent Latex Coating



Cold-Resistant Liner



Pawā® PG542

When working in challenging environments, users may need more than anti-cut gloves. Offering certified resistance against cut-hazards, contact heat and the cold, the Pawā® PG542 offers all-around protection. This unique glove also features a water-repellent latex coating - making it an ideal choice for tough conditions.

The Pawā® PG542 features

- Pawā THERM™**
- Pawā SHIELD™**
- Pawā EDGE™**
- Pawā GRIP™**
- Pawā DRY™**

<p>Thermal & Water-Repellent</p> <p>Pawā® PG241</p>	<p>THERMOLITE & Dexterity</p> <p>Pawā® PG400</p>	<p>Thermal & Anti-Cut 0</p> <p>Pawā® PG540</p>	<p>Heavy Duty Thermal</p> <p>Pawā® PG840</p>
--	---	---	---

0121 516 9934
pawaworkwear.com/request-a-sample
 #feelthepawa

Exclusive to
SUPERTOUCHE™

Feel the Pawā - built to last, designed to perform

In this issue of Best Practice, we are pleased to announce Supertouch as the recipient of our Product Innovation Award.



to perform and built to last."

There are now 26 gloves in the range developed in exactly this manner. If you own a pair of PPE gloves, you're likely to notice a remarkable difference when purchasing from the Pawā range. Used across a multitude of industries, the gloves have received an abundance of praise for their performance, comfort and durability everywhere they have been placed. The award-winning PG535 glove from the cut resistant range has received a high amount of praise from the aerospace industry for their cut resistant performance, high level of dexterity and added benefits such as touchscreen capability for helping improve safety stats and productivity.

The range caters to many industries such as construction, engineering, glass handling, mechanics, metal fabrication, oil and gas, and warehouse use. Available in eight series, there are varying features each glove is specifically designed for. These include breathable, cut resistant, thermal, heat



Celebrating its 25th year in business, Supertouch is one of the leading multi-category manufacturers and suppliers of PPE and workwear in the UK. With a portfolio boasting years of experience, Supertouch live and breathe passion and relay that in its work. Understanding the industry and current trends play a massive part in how the company has relinquished year on year growth and recognition.

Supertouch became established in 1996 and has since become a well-known brand within the UK Protective Workwear and Disposables Industry. Offering one of the largest product ranges of hand protection in the UK, its established manufacturing and distribution of protection gloves is of the highest quality. "We collaborate with end



users to identify the specific needs of UK based businesses, and work with multiple manufacturers to ensure we have access to the highest quality materials suitable for the requirement identified. Unlike many brands that are restricted to working with one manufacturer, we are able to curate the best possible solutions," stated Matt Rushton, Head of Marketing.

The company has now moved its knowledge into the Pawā range, focusing on making a brand that can really make a difference in the industry. Matt explains, "In the early days, Supertouch was recognised as a glove specialist and with years of experience, the company has built an in-depth understanding of work environments and the risks they can entail. It's this insight that has helped create Pawā. Launched in 2018, the Pawā brand is founded on attaining the highest standards in protection, comfort and performance, with every product in the range aligned to the needs of the UK's workforce. From heavy construction to precision manufacturing, be the need for cut resistance and dexterity to water-repellence and ultimate grip, there is a glove designed

resistant, ultra-dexterity, oil resistant, leather, and water repellent. "There is a lot of good products offered by the competition - a lot, and that is where Pawā comes in, by offering great quality products in a concise, multi-benefit range which enables easy identification of the best product for the job," said Matt.

Designed from the three brand pillars: protection, performance and comfort, the Pawā range's key difference over other established brands for those responsible for specifying and sourcing hand protection is its concise offering that helps health and

safety professionals make more effective choices to meet the needs of the workers and the environment they're in.

Matt explained further, "many established glove brands have unnecessarily vast ranges, with multiple models for performing similar tasks. While the introduction of new models due to innovation is to be admired, all too often the older styles are not removed from the ranges for fear of a loss of sales. This can create confusion and leave health and safety managers with an overwhelming number of options to choose from. However, the Pawā glove range has been developed with ease



of specification in mind. Many of our Pawā gloves feature 'multi-norm' technology, i.e. certificated protection against multiple hazards in one glove. This helps businesses ensure multiple risks can be covered off in one glove, rather than relying on wearers to change to the appropriate glove when moving to different areas of a factory for example. Oil & cut resistant gloves also mean wearers don't have to 'double-glove' (e.g. use nitrile disposable gloves under a cut glove), boosting comfort, productivity and safety compliance.

Unsure of what the best solution is for your team? Supertouch has a team of knowledgeable area managers available to help safety managers find the best solution for their hand protection needs. Once the best product has been identified, it can be sourced through the user's usual safety product distributor.

With sustainability and environmental awareness becoming increasingly more important, Supertouch is starting to incorporate these factors into its future plans. Matt went on to say, "in the future we will continue to collaborate with end users to develop the range. We are constantly looking for ways to enhance sustainability credentials having already eliminated 85% of plastic packaging. The packaging that remains is easily recyclable."

If you would like more information on how to request a free glove sample, see below.

T 0345 130 9922
info@pawaworkwear.com
www.pawaworkwear.com



Protect your brand with Cupio Services



In 2004 Cupio was established with the intention of bringing test and production systems, sourced in the USA and Far East to the UK market. By drawing on over 40 years of experience in the test and inspection area Cupio was able to attract some of the world's best inspection systems to its marketing strategy and Cupio began selling production inspection systems into the rest of the EMEA area through a chain of local representatives.

Specialising in the inspection and quality control aspects of electronics manufacturing Cupio took on the representation of more tools with X-Ray and acoustic inspection capabilities. These were mostly for representation in the UK, particularly as Brexit restricted the ability to support customers in the EU.

Originally based in Alton, Hampshire, Cupio moved to a larger premises located in Chineham Business Park, Basingstoke in 2019. Its purpose-built demonstration facility is much bigger and is the base for its highly knowledgeable and experienced workforce, who work with some of the worlds best X-Ray, test and AOI systems. The facility is fitted with the necessary antistatic flooring and facilities and houses the company's CSAM system. This facility gives the company the capability to offer a full inspection and failure analysis service to customers who have insufficient throughput to warrant system investment.

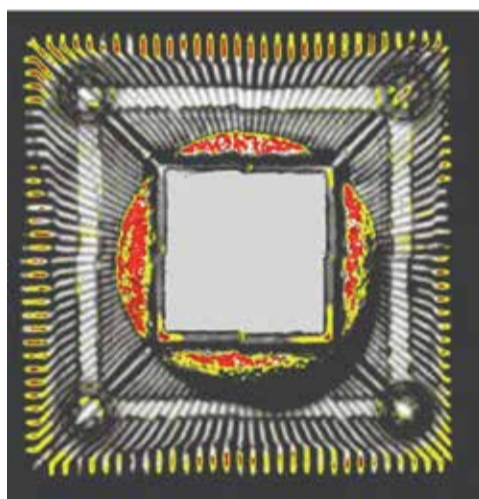


Cupio Services is a branch of Cupio and is the place for failure analysis and non-destructive inspection. Its innovative, specialist equipment is of the highest quality and is used to provide specialist equipment for failure analysis, counterfeit detection and other types of testing and analysis work. Its cutting-edge inspection and test equipment includes high resolution X-Ray with multiple CT imaging options, scanning acoustic microscopes for delamination

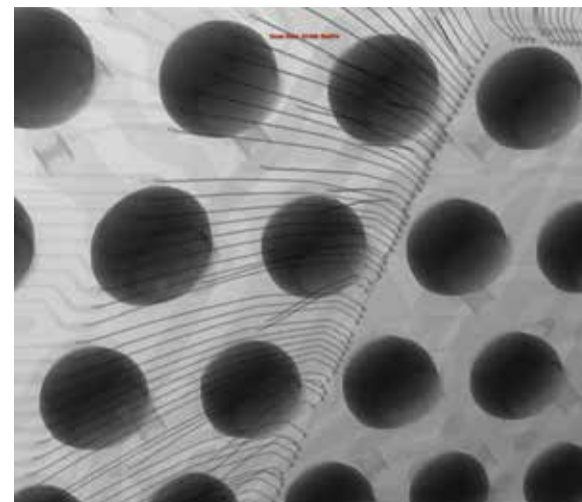
detection within boards or complex devices, high magnification automated optical inspection and testers for counterfeit part detection.

Its capabilities can find the smallest defects within an assembly and image them with sub-micron resolution. Full failure analysis reports can be provided to help understand where and how issues are occurring or to simply assure the customers their equipment will stand the test of time. Its Non-Destructive Testing uses a multitude of advanced diagnostics on materials such as plastics, metals, ceramics, or electronics. Whether the need to diagnose production or in field failures, validate complex manufacturing procedures or perfect new product introductions, Cupio Services can help. Furthermore, demonstrations on its X-Ray, AOI and test systems are offered to all customers who are interested in how the systems operate or wish to acquire one of their own.

We asked Andrew how Cupio has fared through COVID-19, he responded,



"despite the slowdown from COVID-19, we started to pick up new customers for the analysis service throughout 2020 and, as it often happens, we found new areas of the industry interested in what we had to offer. As of 2021, we now offer a complete inspection service with high resolution X-Ray with CT and CSAM inspection and electronic test. This service is complementing of our system and offering very well and is enabling us to also offer turnkey inspection systems capable of automated analysis of parts in the X-Ray systems. As a business



we weren't particularly affected by COVID-19 except in our ability to travel and the delay in people being able to travel to see us."

Through initiating a new style of approach, and various marketing activities, Cupio has been able to target new markets, whilst introducing three extra personnel to its team. Recently, the company has been actively promoting its services into the wider inspection market place where high resolution X-Ray and CSAM imagery is needed for both production and quality control. "We have modified our marketing slightly to account for the lack of shows and have



done more print and online advertising. This seems to be a successful strategy and we will be reviewing that as the exhibitions return during next year," stated Andrew.

In the future, Cupio will continue to monitor market trends and developments within its industry as it plans to bring more inspection equipment into its lab enabling them to offer additional services.

T 01256 262800
info@cupio.co.uk
www.cupio.co.uk
www.cupioservices.co.uk

Cupio SERVICES

THE PLACE FOR
Failure Analysis and In-depth Non-Destructive Inspection

Cupio Services brings knowledge and expertise gained through many years of working with some of the world's best X-Ray, test and AOI systems to our new facility in Chineham Business Park, Basingstoke.

Whether you need to diagnose production or in field failures, validate complex manufacturing procedures or perfect new product introductions, we're here to help.

We have a variety of cutting-edge inspection and test equipment on hand, including functional testers and counterfeit part detection, high resolution x-ray with multiple CT imaging options, and acoustic microscopes for delamination detection within boards or complex devices.

We have the capability to find the smallest defects within your samples and image them with sub-micron resolution. Full failure analysis reports can be provided to help you understand where and how issues are occurring.

Cupio Services Ltd +44 (0) 1256 262800 info@cupioservices.co.uk www.cupioservices.co.uk
Beechwood, Chineham Business Park, Basingstoke, Hampshire, RG24 8WA

Award-winning noise and vibration damping technology



To tackle this, SDS developed the Quiet Pipe Technology system which negates all the problems associated with current technology. How this works is instead of adapting conventional cladding techniques, the new system is comprised of interlocking acoustic close shields that convert the pipe itself into a silencer element to diminish noise.

that Soundeck.co.uk was launched to make these available to the public, they are sold world-wide." noted Les.

In terms of recent developments, the COVID-19 pandemic has caused disruption for many industries and affected every company differently. Seeing an increase in its services, Les remarked on how COVID-19 has affected SDS, stating, "We have benefited from lockdown as people have been at home through the day have complained

"We have designed a new innovative acoustic cladding for noisy pipelines it allows air to circulate which prevents corrosion and is easy to remove for inspection. We expect this to become a market leader in quiet pipe technology." Added Les.

Placing the utmost importance on providing a turn key, efficient service for its customers, SDS welcomes potential customers to send a video of their noise issues, from which the team can then analyse the sound frequencies and offer guidance regarding the best way to initiate noise and vibration control. Notably, the company also offers



energy along the entire length of the production line. SDS removes vibration, which solves all of these issues." said Les Thompson, Managing Director.

SDS specialises in making steel which absorbs vibration making it sound like rubber. It is supplied to OEM manufacturers to make their chutes, hoppers and machine guards quieter, they also supply kits to retro-fit on existing noisy machinery. SDS also design and fabricate bespoke acoustic enclosures and absorbent wall panels.

In this issue of Best Practice we are proud to announce that we have selected Sound Damped Steel as the recipient of our Commitment to Excellence Award.

Sound Damped Steel (SDS) is a multi-award winning noise control company which was established by Les Thompson in 2003 with its main goal being to develop, manufacture and supply materials for industrial noise and vibration control applications.

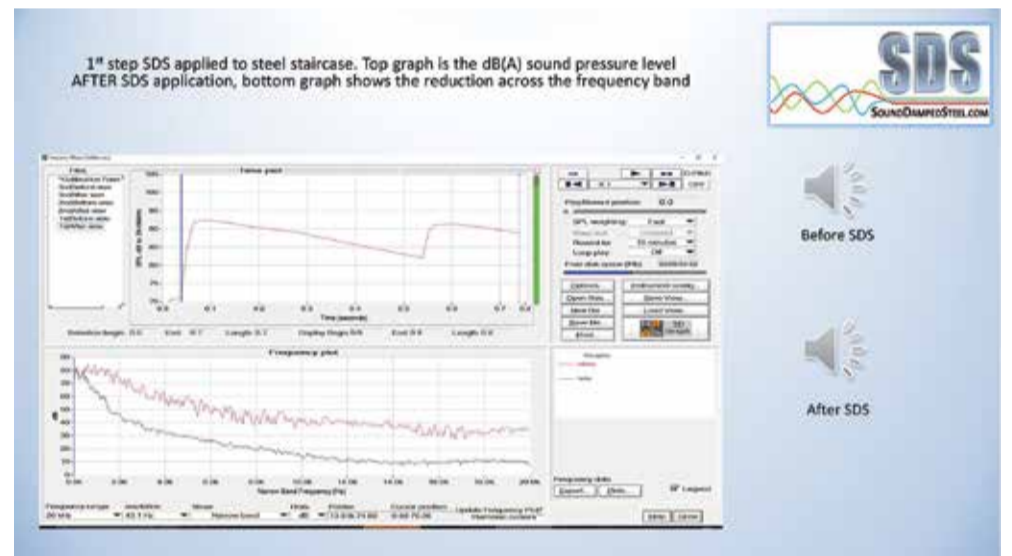
Since its inception, SDS has expanded significantly and manufactures and supplies highly damped materials, complete kits and components that have been specifically designed to solve a very wide range of noise and vibration control problems at competitive, low costs.

SDS utilises and draws upon its over 30 years' of experience in developing new and practical applications for the technology, across an expansive range of projects to help both end users and leading noise and vibration control consultants, to solve their problems.

What truly sets SDS's services apart is its alternative approach to those of conventional methods. "Conventional methods isolate vibration but don't remove it. This can lead to metal fatigue, welds cracking and transmitting the

A speciality for the company is gas pipelines which they have, in collaboration with the INVC.co.uk, designed creating a unique system of silencing noisy pipelines while retaining air flow around the pipe and giving easy access for inspection.

Gas, oil and other pipelines and their associated equipment such as valves, are renowned for generating high levels of noise that require a noise control solution to be applied. The current typical noise control measure that is used on pipelines, valves and other system components is the use of acoustic cladding, this however contains a multitude of drawbacks and additional associated problems.



adhesive dampers which retro fit on existing plant and machinery to provide a more cost effective solution to reducing sound.

Another service created by Les, is Soundeck. "As a Hi-Fi enthusiast I made some damping feet and a turntable mat for my record player, they worked so well

about noise from industrial sites, so we have been busy supplying noise control solutions. On the downside, the exports of steel have been damaged due to a 25% import tariff on steel exports to Europe." Les continued, "However, on another positive note, with so much leisure time, people have been listening to more music and upgrading their systems with Soundeck Hi-Fi enhancing products so we have noticed increased sales as a result of this."

As the company looks towards the future, SDS is keen to work with noise consultants and fabricators who work and install guards, hoppers and chutes. Les explained, "We would like to offer an opportunity to add value to their portfolio. SDS also manufacture and sell on www.soundeck.co.uk, which provides a range of isolation products for Hi-Fi enthusiasts which receive fantastic reviews, especially the turntable mat for record players. Please see for yourself and Google search, Soundeck for reviews."

For any more information, please see the details below.

T +44 (0)191 259 0700
www.sounddampedsteel.com
www.soundeck.bigcartel.com



RFID solutions that work



In this issue of Best Practice, we are proud to announce that we have selected Tec-RFID as the recipient of our Commitment to Excellence Award.

Offering everything in one place, Tec-RFID expertly help businesses improve efficiency through RFID solutions. RFID can sometimes be a complicated grey area for businesses who aren't sure how to implement it into their business. Environments or hard to tag assets can hamper the effectiveness of RFID, therefore, Tec-RFID has solved this issue by providing a solution offering one place where businesses can get everything that is needed for RFID. This includes readers, antennas, tags, software, and more.

Collating vast RFID system knowledge with proven industry experience, has enabled Tec-RFID to use specialised tags and select them for the right reader for each specific situation. The process then brings together an integrated or standalone software providing a complete solution. "We are hardware agnostic and will select the right RFID readers, antennas, tags and software to create a complete solution that works for our customers," stated Albert Clarke, Sales and Marketing Manager.



Established in 2013, Tec-RFID is based in Worcestershire but cover the whole of the UK with its services. Providing RFID solutions for asset management and inventory management, Tec-RFID target specific industries such as warehousing, logistics, retail, and manufacturing. Working with such companies in barcoding, mobile and RFID applications, Tec-RFID are known nationwide for its reliable and trusted complete solution packages.

Its products offer a vast array of solutions to customers and in comparison, to other RFID companies on the market, Tec-RFID focus clearly on the customer's individual needs to design a solution that gives them the ultimate return of investment. UK owned and operated, Tec-RFID offer no-obligation consultations and demos, assuring the customer they only pay once the problem is solved.

Alongside the use of its products available, no RFID system is complete without the right software. Tec-RFID has created an RFID Asset Management Software solution which includes an RFID reader, software, and tags, and provides actionable insights for any business allowing a faster, easier and more affordable approach to start using RFID.

Computer tools, machinery, and vehicles are all examples of physical expensive assets that many companies have. RFID stands for Radio Frequency Identification and is a powerful tool for tracking these assets. Having RFID in a business is essential and has many benefits compared to a manual or barcode system.

The Tec-RFID Asset Management Software bundle includes:

Zebra RFD8500 - A powerful handheld RFID Reader that connects to an android device via bluetooth.

Zebra TC26 - A high-performance enterprise android device with IP67 and handles drops of up to 1.2 m.

RFID tags - Tec-RFID supply the on-metal or off metal RFID tags for a company's assets.

Both standard tags and custom tags available.

Android App - An app for stocktakes, viewing and adding assets, moving assets and finding missing assets.

Web Portal - The web portal enables the user to create and view assets from a laptop or desktop computer.

The app comes in three packages and can

be catered to small, medium or large sized businesses. It comes available on a three-year monthly payment contract with prices starting from £99.00 a month. There is also the option to experience a free trial of the software and RFID reader to see if it's the right fit before purchasing.

Creating solutions that work, Tec-RFID plan to develop more off the shelf RFID solutions in the future as it continues to be one of the industry's

leading companies that is creating the cheapest and easiest RFID solutions available on the market to date. If you're ready to move on with your next RFID project, Tec-RFID can help.

For more information, see below.

T 0844 870 7873
info@tec-rfid.co.uk
www.tec-rfid.co.uk



Warehouse Solutions

We are experts in helping businesses improve efficiency through RFID solutions. RFID, which stands for Radio Frequency Identification, is a technology system that can identify an object using radio waves. At TEC-RFID, we believe RFID will bring big advances to retail, warehousing, manufacturing, construction and more. We make it as simple as possible.

Contact us for more information by calling 0844 870 7873, email info@tec-rfid.co.uk or visit www.tec-rfid.co.uk

100 years of engineering excellence from Kingston Engineering



With an impressive successful history dating back to 1919, Kingston Engineering has developed a rich heritage built on providing precision engineering. Leading to the present day, Kingston Engineering has established itself as one of the UK's leading manufacturers of bespoke power screws and engineering services.

Kingston Engineering is proud to be part of Yorkshire's strong manufacturing history and that of Hull. From its facilities in Hull, Kingston Engineering manufactures and produces bespoke power screws, adaptable for mechanical power transmission.

The company is able to offer bespoke designs, to suit the needs of their clients' precise requirements, which has led to them building an exceptional reputation for being able to fit the needs of various industry sectors. The company's



products are used extensively in a diverse range of applications which include aerospace, oil and gas, nuclear energy, the chemical and medical sectors and many more.

Kingston Engineering specialises in manufacturing Right Hand/Left Hand, single/multi-start, cut thread Power Transmission Screws and Nuts for over 60 years. Adaptable for mechanical power transmission, their products conform to the standards of British, European and American requirements.



Utilising its team of highly skilled engineers, precision parts and assemblies are produced to exceptional quality and to the most exacting of specifications.

continuously engaging in plans to help the company become global leaders in screw manufacturing.

Kingston Engineering has shown remarkable resilience and responsiveness to change across the decades. These core values still are still at the forefront of the company's operations and the company remains firmly committed to its home city of Hull, recognising the importance of continued investment.

As to the future, Kingston Engineering will continue to build on its strong foundation of engineering excellence as the company embraces the years ahead.

For more information, please see below.

T 01482 325 676
www.kingston-engineering.co.uk

PRECISION ENGINEERING SERVICES

Leading Specialist Manufacturer and Producers of Bespoke Power Screws

- ❑ Ex Stock Power Screws and Nuts
- ❑ Precision-machine Components
- ❑ Self-reversing Screws and Followers
- ❑ Specialist Leadscrew and Power Screw Products
- ❑ Accredited by Aerospace, Nuclear & Chemical Customers

+44 (0)1482 325676
 sales@kingston-engineering.co.uk
 Follow us

www.kingston-engineering.co.uk

Kingston Engineering Co. (Hull) Ltd, Pennington Street, Hull, East Yorkshire, HU8 7LD, UK

We caught up with Production Director, Paul Bielby about how Kingston Engineering's screws have become so popular. He added, "Kingston Engineering's screws can be used in a range of applications and across multiple industries. This includes in Aerospace, Oil and Gas, Nuclear energy, the chemical and medical fields, and much more. We work closely with both suppliers and end users in order to provide the very best, customised and purpose built screws possible. We also have an ever growing base, with customers all across the UK and even further afield in the US."

Committed to quality, all of Kingston Engineering's products meet ISO 9001-2015 accreditation and are examined thoroughly during the manufacturing process.

Kingston engineering has gained an outstanding reputation since its inception, enabling the company to flourish within its industry and further its development and manufacturing processes.

Excelling in engineering quality, Kingston Engineering showcases 100 years of skilled, expert and customer focus based history. Through these advancements and changes in technology, the company has maintained its presence in the market and gained further global recognition and presence.

It is clear to see that over the years, the company has significantly invested in its machinery for continued success. The company's current directors have an unprecedented, more than 100 years' of experience between them and are

Call us on +44 (0)1482 325676
 or email sales@kingston-engineering.co.uk

Precision Engineering Services

Quality is guaranteed

[VIEW OUR SERVICES >](#)

We specialise in the manufacture of precision machined components and assemblies for a diverse range of industry sectors including...



STORAGE PROBLEMS?

We've heard it all.
Better yet, we've solved it all.

Get in touch with our Business Services team today to book your **FREE** consultation.

The trusted experts in space utilisation.



Scan me



BiGDUG

WWW.BIGDUG.CO.UK 0800 141 3380

Ergonomic handling with TAWI



were trained within twenty minutes. Both efficiency and safety were improved, and staff told us they could no longer imagine completing their daily tasks without TAWI. The real test came when the warehouse team had to quarantine due to Covid, and the demands of the day's orders were still successfully fulfilled by a mixture of other employees due to support from the TAWI vacuum lifter.

The equipment had proved that it was a worthwhile investment, and the staff are happier and healthier. They knew that their employer cared about them due to the focus that has been put on their wellbeing. There are six facilities nationwide and each had introduced a TAWI multifunction lifter to their facilities by the end of 2020.

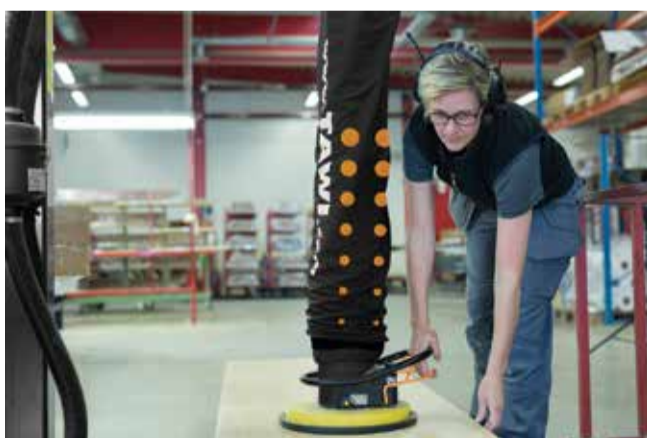
eh.uk.info@piab.com
www.tawi.com



No matter which industry you work in, our range of ergonomic handling solutions can improve productivity levels and health & safety at the same time. Turn two person lifts to one person lifts by allowing the operator to lift up to 250kg at just the push of the button. Our vacuum lifters remove 100% of the weight of the goods from the operator allowing them to move quickly and with precision. Other solutions such as trolleys, and chain and wire hoists solve a multitude of manual handling issues; the versatile range of equipment on offer allows you to lift nearly anything with TAWI. We offer both stationary and mobile solutions, customisable solutions, and also stainless steel and ATEX rated solutions.

TAWI's Mobile Order Picker (MOP) allows one person to do the job of two while protecting them from injuries caused by lifting heavy objects. The MOP is compatible with any forklift or pallet jack, making it a highly versatile piece of equipment. With its adjustable tower height, operators can reach into pallet racks and other low headroom spaces giving them the ability to access otherwise hard to reach areas.

Our trolleys are built with a modular design, so parts and attachments are interchangeable, making them highly adaptable to your needs. Lift, tilt, and rotate reels with ease, and grip them from either the core or the outside to reduce damage to your goods. Our lifting trolleys are perfect for lifting reels of film and packaging.



In 2020, we were approached by a company who's growth was accelerating beyond what the staff could cope with, and this coupled with the stress placed on their bodies through manual handling was causing staff satisfaction rates to drop, and even for some to leave. The company, who highly values their staff, decided enough was enough and reached out to TAWI for support.

Once installed, our lifting system was easily integrated into the day-to-day processes in the warehouse and operators



Ergonomic handling and lifting equipment suitable for all industries. From Vacuum Lifters to Trolleys, we have the solution for you. Bespoke builds, ATEX and stainless steel versions are available. Call the TAWI UK team to discuss your needs today.



Safely lift up to 250kg

Free, no obligation site visit every time

Protect the health & safety of your staff without sacrificing productivity

Mobile and stationary options

Lift and manipulate goods with ease

Dedicated servicing and aftercare team for full, long term support

Call

01604 591120

Email

eh.uk.info@piab.com

Website

www.tawi.com

William Hackett



In 2019, William Hackett launched a ground-breaking Quad Pawl system within its SS-L5 QP lever hoist: the first lever hoist to incorporate four load bearing pawls.

The unique and patented Quad Pawl design enhances the capabilities of the hoist using all four pawls to engage with the ratchet gear in an offset configuration sequence thus enabling finer adjustment and tensioning capability while maintaining pawl and ratchet gear engagement.

A further innovative design feature of the quad pawls enables them to work independently of pawl springs, however, for additional resilience to the hoist is fitted with pawl springs that are captivated from within the brake chamber, making the hoist safer.

William Hackett has succeeded in establishing the SS-L5 QP internationally and its increasing popularity amongst offshore operators is centred on its quality of manufacture, multi-immersion capability, and its ease of use and transport. Its multiple immersion capability in offshore and subsea lifting and pulling hoist operations is feasible thanks to design and its extensive corrosion protection, these capabilities have been independently verified by DNV.

Ben Burgess, Director at William Hackett, says: "Since our launch of the SS-L5 QP we have seen sales surpass forecast. In part, this is a result of an excellent engineered product after years of continuous research and innovation. However, for today's operators the SS-L5 QP also provides significant cost efficiencies, reduced operational risk and is environmentally friendlier than the previous generation products that have more limited operational life."

We are already seeing a rise in demand across all industries following Covid-19 and this is at a time when offshore exploration and production operations are faced with a growing number of constraints. Our strength lies in our ongoing process of product innovation, which is why we have extended the Quad-Pawl technology in to our full C4 chain block and L5 product range for onshore and offshore use across multiple industries"

"Our QP Quad Pawl technology facilitates efficient utilisation of human resources and optimises the profitability of operations. Increasing operational efficiency and safety is a corporate imperative in all projects," highlights Burgess.

<https://www.williamhackett.co.uk/>

Manual assembly of the highest quality

The bott avero workstations have been effectively used for some time at Wibu-Systems, ensuring the highest standards of quality in their electronics production. Wibu-Systems are innovative technology leaders for software licensing in the global market.

Testing and packaging

The production staff at Wibu-Systems use the avero workstations to pack and assemble products, conduct serialisation tests (the storage and transmission of objects in files via the network), ultrasonic welding and the gluing and pressing of products. The profile on the bench edge of the avero workstation and the triple locking mechanism, both help to precisely

position and guide the workpiece carriers. The bott team in Germany designed and integrated this particular solution, according to the special requirements and needs of Wibu-Systems.

Reliability and quality

The avero workstation system is perfectly suited for the manual assembly of high-quality products, perfect for Wibu-Systems and the manufacture of its reliable hardware and software solutions.

Ergonomic working

The height adjustable workbenches and swivel frames, ensure that staff always have their equipment and parts needed within easy reach.

For optimum ergonomic working conditions, the shelves can also be incrementally adjusted without the need for tools.



Custom colours

In line with our other ranges, avero workstation systems are supplied in a standard, modern colour combination of light and anthracite grey, creating a neutral design suitable for any production environment.

www.bottltd.co.uk

A system for success



Lista AG sets the benchmark for workspace and storage solutions. The system provider has a long-established tradition of manufacturing its high-quality products in Switzerland, and guarantees them for 10 years.

When it comes to workspace and storage solutions, make Erlen your first port of call: the Thurgau town is home to the headquarters of LISTA, Europe's leading manufacturer of drawer cabinets and workstations, cabinet and shelving systems. The long-established company has been manufacturing its products here for over 75 years, achieving global success with quality "Made in Switzerland".

"Ultimately, we are process optimisers", says Marcel Koch, Head of Marketing LISTA Group. "LISTA products create order and help to establish smooth workflows, thereby increasing

efficiency."

The story of the company's success begins with the production of drawer cabinets. Today, LISTA is Europe's number 1 choice for complete workspace and storage solutions, characterised by the system approach: all elements can be combined in any configuration and supplied in virtually any colour and size.

This variability was made possible by the grid system introduced by LISTA, which has become the established industry standard worldwide. "With the grid system, we have set the benchmark right from the beginning", says Koch. "Not least thanks to this, we can offer a 10-year guarantee and availability guarantee on our entire range, which is unique in the industry."

Quality suppliers ensure satisfied customers. Over 100,000 companies worldwide use LISTA products. LISTA develops tailor-made solutions for customers with individual requirements. Innovations like the 2020 LISTA Edge or 2021 automated guided vehicle systems complete the range.

www.lista.com

THE LEADING SYSTEM FOR WORKSPACE AND STORAGE EQUIPMENT



CALL US NOW
OR SEND AN E-MAIL
01908 222333
info.uk@lista.com

BENEFITS

- + Comprehensive range from A for access control to bis W for workstation systems
- + Maximum flexibility with a choice of colours, configuration options and more
- + 10-year guarantee unique in the industry
- + Worldwide distribution and service network for customer service without borders

www.lista.com

LISTA

Only LeeSan truly specialise in toilets
Toilets, Tanks, Hoses, Clips, Gauges, Fittings, Vent Filters and everything you need plus Advice & Guidance
A Sanitation that brings peace of mind ...
Supported by our Worldwide Spares Delivery Service

sales@leesan.com
T: 01295 770000

LeeSan
Marine • Welfare • Leisure

ESSEXPLANT

We specialise in used plant machinery in the UK from mini diggers, excavators, telehandlers, rollers, boom lifts, tractors, JCB, Genie CAT to vans and other commercial equipment.

Shop our range of Heavy Duty Work Benches which are in stock now

- | | | |
|--|---|--------------|
| | 10' Heavy Duty Work Bench/Tool Cabinet c/w 15 Drawers & 2 Cabinets | £1450 |
| | 5.5' Heavy Duty Work Bench/Tool Cabinet C/W 10 Drawers 1 Cabinet on Casters | £1000 |
| | 3.5' Heavy Duty Work Bench/Tool Cabinet C/W 5 Drawers 1 Cabinet on Casters | £750 |
| | 7' Heavy Duty Work Bench/Tool Cabinet C/W 10 Drawers & Two Door Cabinets | £1200 |

www.essexplant.co.uk

18 Warehouse Organisation Ideas

kardex remstar

Starting the new year off on the right foot can only lead to success! In times of increasing competition, the need to rationalize processes in the area of intralogistics is under constant scrutiny. It can be daunting to even consider an overhaul on your warehouse layout.

2021 will continue to see major changes in how warehouses manage production and stock.

Firstly, your space doesn't have to start with a clean slate. It simply means that you can optimise some of your current processes to help you and your staff complete day to day tasks more efficiently.

The warehouse should be considered the foundation to your business and if your current warehouse needs help and you're not sure where to begin,

start by making small changes. So how do you get started on your warehouse organisation journey?

There are several warehouse organisation ideas to review and consider, but they fall into three major categories: Warehouse Layout, Inventory management and clean workspaces.

If you start with these three it should help you to plan/navigate the organisation process your warehouse may require. Tackling all three at the same time could be overwhelming. Ask yourself is there room for improvement? An opportunity to tame any disorganisation within your warehouse.

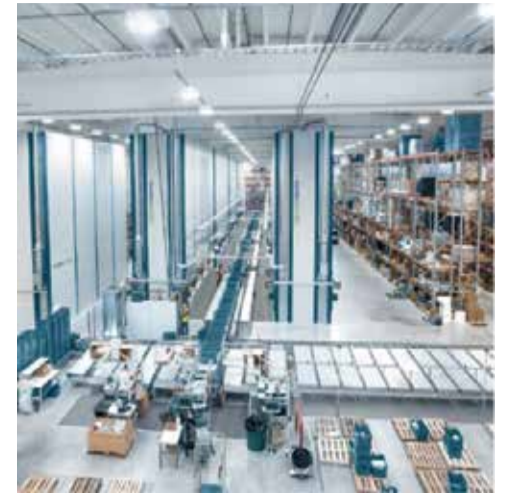
To start pick one or two things which you can implement immediately for the quickest return. The most

important thing to keep in mind after organising your warehouse is to review your processes and procedures regularly. Did your changes have a positive impact? Are your employees more efficient? When it comes to facility flow or labels and signage, small adjustments can make a world of a difference.

Inventory management accounts for just about everything physically in your warehouse.

Without a system in place to keep track of your assets, it can be difficult for your employees to do their jobs. Categorising inventory and using proper storage methods maximises your existing facility and frees up previously wasted space to increase capacity and improve efficiencies.

Whether the global pandemic has created chaos in your warehouse or things have just slipped, now is the time to get back on track. Organising your warehouse today will set you



up for an efficient and successful business today and in the future!

To help get you started Kardex has created a guide [18 Warehouse Organization Ideas to Boost Productivity](#) which delivers insights, tips and processes that will assist in your process.

Contact www.kardex.com

NE Fasteners Celebrating 35 Years 1985-2020

NE Fasteners Limited, a family owned company is celebrating their 35th year of business. With Nigel Elliott setting up in his garage in Halesowen, it soon became apparent his in-depth knowledge and expertise of the trade was invaluable and is still very much involved on a day to day basis. This would not have happened without loyal and supportive customers, suppliers and staff alike.

We primarily specialise in screws fixings & fasteners for the DIY, hardware, building, joinery and furniture manufacturing sectors. NE Fasteners prides itself with offering expertise, competitive prices from local and internationally

sourced standard and bespoke products. Our warehouse is situated in a 7,000sqft warehouse in Cradley Heath in the West Midlands, we are able to provide a wide range of finishes, including zinc, electro brass, black chrome, satin chrome, bronze and nickel, and packaging options, ensuring that many buyers consider us to be a key and valued supplier.

More recently, Screwshop has evolved from its established sister company NE Fasteners and has also proven a huge success with its online shop.

After 5 years in operation, we have grown year on

year and seen an increase in sales with the recent lockdown. We are now looking to increase stock and make it even easier for customers to order.

With friendly and experienced staff, our aim is to offer excellent service with our next day deliveries and give an opportunity for our customers to let us manage all fixings, fasteners and component requirements competitively.

Have a look at our online shop www.screwshop.co.uk, or give us a call on 0121 559 8866 with your enquiries and we will give you our best attention and prices at all times.



STOCK LEVELS YOU CAN TRUST



EC PLUG FANS FOR AIR HANDLING UNITS

Axair Fans UK Limited
www.axair-fans.co.uk
01782 349 430



Plug Fans with Generation 3 EC Motor*



The E Series range of EC plug fans produce significant increases in energy efficiency and a major reduction in operating noise in high flow and low - medium pressure applications. Available from stock or on short lead times, in multiple single of 3 phase EC variants. Expertly designed and manufactured to the highest standards by The Rosenberg Group in Germany, the GKHM range blends efficiency, performance and costs perfectly. A full range of datasheets are available upon request, contact us for more information.

Modular EC Plug Fans (GKHM)

Compact, efficient and optimally designed, the GKHM range of EC modular plug fans feature a lightweight (1.22kg/m²) black UV stabilised, long fibre reinforced polypropylene impeller, therefore reducing the mass of

inertia and start up resistance to a minimum. Designed with computer fluid dynamics, the profiled blades and diffuser wheel produces less vibration while significantly reducing noise levels.

Generation 3 EC Motor

The Generation 3 EC motor from Rosenberg is 30% more powerful than the previous generation. As standard, the motors input voltage range is 200-480 VAC (50/60Hz) and offers additional upgrades such as an integrated inspection LED to visualise the motors condition, improved ModBus RTU functionality, electronic quick change technology (EQC), IT network support. The maximum electrical input power is 4.7kW. *Featured on 3 phase fans only.

Energy Efficient E-Wheel (CIE)

The low noise E-Wheel is manufactured from state-of-the-art materials and developed in house by Rosenberg Group. The E series revolution produces class leading performance in a backward curve offering. Efficiency is optimised by using 7 profiled blades and a narrow radial diffuser to maximise static regain through the fan discharge.

Higher Performance (IE)

E-Wheel is geared for maximum performance and efficiency, to achieve this we have optimised inlet conditions by reducing the motor interaction with the airflow path as much as possible, this has resulted in increased airflow and pressure vs our non-optimised solution.

If you're struggling with EC Plug fan supply issues with extended lead times and a lack of technical knowledge from your current supplier, we'd love to chat with you. Our EC range is competitively priced and our technical knowledge is unrivalled.

Axair Fans UK Limited
www.axair-fans.co.uk



UNISIG

UNISIG TAKES MOLDMAKERS FURTHER

Increase your mold manufacturing versatility using the power of gun-drilling with the leaders in deep hole drilling, UNISIG. Offering complete solutions for everything from simple to complex mold components, UNISIG machines help moldmakers improve efficiency, throughput and precision with outstanding part-processing versatility at an exceptional value.

TAKE YOUR MOLDBUILDING OPERATIONS
FURTHER WITH UNISIG TODAY.

Find out more at www.UNISIG.com



Industry leading deep hole drilling technology



In this issue of Best Practice, we are pleased to announce UNISIG as our Engineering and Manufacturing Company of the Year.

Established in 1981, UNISIG originally was founded to provide deep hole drilling machines, accessories and related services to the US market. It soon built up a strong reputation within the industry for deep hole drilling applications and successfully began supporting customers from a multitude of industries. In 1995, a new ownership fast tracked the company and redirected its journey creating a fresh perspective. Through its strong engineering and manufacturing capabilities, UNISIG formed a resilient character to push the limits of what was possible within the industry.

Fast forward to the 21st century, UNISIG has morphed into a modern, comprehensive production line that focusses on technology, performance and the maintenance of high standards within the industry. Its machines are engineered and manufactured by people who understand machine tools and are passionate about precision and performance. As one of the largest producers of deep hole drilling machines, UNISIG is a leader in technology, innovation, support,



and service. Its capabilities serve customers from many sectors, with its machines used to help solve solutions from the simplest to the most complex of applications. Its products are available globally with installations in the Americas, Europe, and Asia.

UNISIG offer a complete deep hole drilling system solution that includes machines, tools and automation. Its engineers hold vast amounts of technical expertise that are transferred to its clients through the company's overall service. Deep hole drilling



is defined by its depth-to-diameter ratio, and typically holes greater than 10:1 is considered as deep holes. It consists of BTA drilling and gun drilling, with additional processes designed for specific tolerance objectives and is generally performed on BTA-style deep hole drilling machines. The process can be used in a plethora of materials from aluminium to super-alloys, and is capable of achieving tight diameter control, straightness, and superior surface finish into workpieces.

UNISIG products cater to many industries such as aerospace, energy, oil and gas, military and defence, automotive, hydraulics, medical, molding, and more. Its impressive drilling capabilities has set new standards within the industry for deep hole drilling machines, and its technology has been manufactured to create machines for BTA, gun drilling, counterboring/reaming, pull boring, trepanning, skiving and roller burnishing, bottle boring, bottom forming, and many more.

A product model to highlight from UNISIG is the UNE6 that comes in three models. The UNE6, UNE6-2i, and UNE6-2i with optional robotic automation. All three machines are designed so that medical manufacturers can accurately and productively gundrill components after swiss machine turning. Specifically focussing on the UNE6-2i models, they are an expansion on the UNE6 machine and come with a range of new and exciting features that open up new possibilities in medical tool drilling. The machine is perfect for the medical industry or for any companies producing medical components.

The machine allows the user to reduce dependency on cannulated materials and expand on their own capabilities. The UNE6-

2i medical gundrilling machine is designed for the challenges and dimensions faced by medical manufacturers. The machine is capable of drilling holes from 0.8 – 6.0 mm, comes with two automation options and a two independent spindle configuration that allows manufacturers to find a solution that perfectly fits their needs.

Knowing the unique barriers manufacturers can face in making medical components, UNISIG created the UNE6-2i as a solution to these problems. With over 40 years of experience in delivering precise, intuitive deep hole drilling machines around the world, the UNE6-2i, alongside other systems available by UNISIG, has been created to enable customers to achieve greater success.

UNISIG offer many integrated solutions to the medical industry and deliver a confident complete deep hole drilling system solution. As well as optimising productivity, UNE6-2i configurations expand capabilities efficiently and ergonomically by maximising



demand consisting of robots for part loading and with international automations for loading the tools.

UNISIG offer the option for every machine to be built robot ready and its the UNE6-2i has been tremendously successful for manufacturers around the world. UNISIG can tailor each machine to the customers process to make it more impactful, and each machine is highly engineered towards specific customer specifications which then helps towards a more productive process and more spindle uptime.

Over the past 12 months, UNISIG has received an increase in orders from manufacturers within the medical industry and has also seen an increase in interest from some services that have started growing again post COVID-19. "Medical, energy and oil industries have risen, but other industries have slowed down. We are fortunate that our products cater to a vast number of industries so when one industry is not performing as well as others, we capitalise on the ones that are in demand and can cater our products to them. The past two years UNISIG has experienced our strongest progress since we began, we believe the ability to cater to an abundance of industries keeps us afloat and enables us to keep growing," stated Philipp Steimle, Managing Director.

In the future, UNISIG will be attending more events enabling them to once again interact with customers face to face. The past 18 months has welcomed meetings via Microsoft Teams which have been productive, but not always efficient for UNISIG to serve clients to its full capabilities. The company is excited to once again be able to offer customers the full experience and make the most out of being able to travel to them and for them to travel to the company's facility.

Philipp mentioned how UNISIG felt being named as our Company of the Year, "we feel honoured that our continued work in the industry is being recognised."

For more information, see below.

T +1 262-252-5151
sales@unisig.com
www.unisig.com

production via an independent spindle that provides manufacturing flexibility from use of the operator or robot.

In simple terms, UNE6-2i is a dual spindle, independent machine that offers a single operating zone for operator loading. Sequential operations can be run on the same machines with the optional robotic automation from the rear that is available without interfering the manual set-up and operation.

UNISIG has seen a growing demand from companies within the medical sector looking for fully automated machines that are operated by robots. In response, UNISIG offers an extensive line of fully automated production cells to cope with consumer



High-performing test chambers

Since 1995, JTS has been designing and building reliable, high-performing environmental test chambers for a wide variety of industries. The company is an independent specialist UK manufacturer, with design and build undertaken in-house by a team of skilled engineers and technicians.

Environmental testing is an essential process in the research and development of new products, and the maintenance of quality and reliability of established product lines. Using the right environmental test chamber to simulate given conditions, such as heat, cold, humidity, dust, vibration and pressure, ensures products meet industry standards, improving quality and minimising failures.

JTS Ltd specialises in designing and building systems for temperature, humidity, rain, dust and vibration testing, with units ranging from small

bench-top chambers to walk-in rooms, and air conditioning units to supply independent test rigs. With the increase demand for battery testing JTS has been converting 30ft shipping containers into specialist self-contained 'test cells' for temperature and humidity testing. Battery testing can be highly volatile and to minimise risk in this case, JTS engineers designed an innovative CO2 cascade system, capable of achieving a range of +80/ -40c at high rates of temperature change.

As an inert gas, CO2 has a major advantage in this application over alternative refrigerants which are either highly flammable, less efficient or have a far higher GWP (Global Warming Potential).

Contact
T 01874 711209
www.jts-test-chambers.co.uk



TVR Instruments Ltd

TVR Instruments Ltd are a specialist distributor of power related measuring and control products.

The company, which is situated in Colchester in Essex, was set up in 2010 and has come a long way since its foundation. Within the course of its eleven years in the trade TVR Instruments has become a specialist well-established within several industries, operating efficiently on a universal scale to meet the challenging demands of its solidly built and rapidly growing customer base.

The product portfolio consists of many reputable brands; Emko Elektronik genset and temperature controllers, Frer srl of Italy for all switchboard measuring components and a stockist of Adel System for DC UPS, battery chargers and power supplies. TVR Instruments Ltd is also a stockist of Ziehl Industries-elektronik range of G99/98 Loss of Mains relays, temperature, and transformer protection relays.

Amongst the new product lines TVR is offering is the Frer range of Multifunction meters with options for inbuilt communications for remote monitoring, Ethernet with onboard memory. The range covers DIN Rail and panel mounting meters with 3 in 1 CT and Rogowski coil options. The updated earth leakage relay compliant to EN60947-2 (type B, A, AC, F) and EN62423:2013 (types F) are now available. Remote monitoring is offer with the FrerLogger package of server installed remote monitoring package, where the data and the package is controlled by the client.

With its vast experience providing instrumentation across both Europe and the Middle East, TVR Instruments Ltd is well-practiced in the source and supply of competitively priced products for usage within the switchboard and panel building industry. If you are interested in enquiring about any of the current transformers, transducers, switchboard power supplies, remote monitoring software, battery chargers and genset controllers within the range then please consult the company website www.tvri.co.uk to find out more.



NEW!

Energy data capture and retransmission

FRER

Multifunction Meters | CTs, VTs and Shunts | Transducers | Energy Meters - MID
Bargraphs | Earth Leakage Relays | Protection Relays | Battery Chargers | Power Supplies
DC UPS | Generator Controllers | Remote Monitoring | Ventilation Control

TVR Instruments Limited
143 Butt Road, Colchester
CO3 3DP Essex
United Kingdom

Tel: +44 (0) 1206 575755
Email: sales@tvri.co.uk www.tvri.co.uk

MEASURING, POWER AND PROTECTION SOLUTIONS

A full suite of products to allow complete accuracy

The accurate and correct measurement, control and protection of the AC and DC power systems within an installation is critical. The AC is the workhorse of the power distribution network whilst the DC is the backup that secures the communication and recording.



TVR Instruments, an experienced and knowledgeable distributor of electronic components for the measurement, protection and controls of AC and DC power networks, focuses on both the networks to assist in supporting their resilience.

The team concentrates on the delivery of components for measuring, power and protection applications, predominantly in the LVD distribution and panel building sectors. Its full suite of products includes multifunction meters, current transformers, voltage transformers, shunts, transducers, energy meters (MID), ELR, protection relays, battery chargers, power supplies, DC UPS, remote monitoring and ventilation control systems. The protection devices available for purchase specifically cover loss of mains G99/G98, temperature, frequency and phase sequence (to name a few core examples).

CUSTOMER FOCUSED

TVR Instruments will work hard to propose the most appropriate equipment for the job in hand and ensure continued reassurance with their first-rate level of service. Their European suppliers are also backed up by industry recognised accreditation, as all products are made under ISO9001 quality certified factories in accordance with the relevant CE marking directives (EMC and LVD).

'We are a service provider with a customer focused ethos,' Tony Robinson, owner of TVR Instruments, commented. 'Our strategy revolves around delivering the best customer service as possible, offering suitable units for control and display from our extensive product range. We remain focused on clients'

specific requirements whilst taking the time to understand their situation, providing a solution for the individual application.

'All our suppliers work rigorously to remain compliant with all of the necessary industry standards and up to date regulations. With our high-quality products, we can provide short lead times and close application support. The closeness of the production facilities allows for direct real time support and application development.'

PRODUCT LINES

The product portfolio is made up of reputable European based manufacturers and Emko Elektronik in Turkey from whom we source and supply a range of genset controller and process control instruments. TVR Instruments is the UK and Ireland agent for Frer s.r.l of Italy for all switchboard measuring components and a stockist of Adel Systems battery chargers and power supplies. It is also a stockist of Ziehl Industrie-elektronik GmbH for



mains, temperature, and transformer protection relays

Amongst the new product lines TVR is offering is the Frer QUBO96 range of Panel or DIN Rail mounting Multifunction meters with options for inbuilt communications for remote monitoring, Ethernet with onboard memory and Digital Earth Leakage Relays to meet the requirements of Types A, A-F and Type B earth leakage protection applications with earth leakage relay compliant to IEC60947-2 or EN62423:2013 and the XTDB022006 6mA dc Residual Direct Current Monitoring Module according to IEC62955 for Electric Vehicle charging.

For remote monitoring and logging off energy consumption at up to 2000 monitored points is the Frerlogger software package. The Frerlogger package is a package installed and

controlled inside the firewall of the facility. There is no need for remote access or for cloud storage. This offers an additional level of security and reduced cost for the owner. Updates are free and provided to the owner direct from Frer. Frer manufacture a range of energy meters with a simple compatibility to Frerlogger via Ethernet, MODbus or USB interfaces

From Adel System TVR market their range of European manufactured Power Supplies, Battery Chargers and All-in-One DC UPS for use on 12, 24 or 48V DC systems up to 35A output.

The CBI DC UPS combine the functions of a Power Supply, a Back Up Module and of a Battery Charger in one unit. They use switching technology with microcontrollers and optimise the supply to the DC load either when the AC mains is present or when the battery backup is in operation. The CBI units do not allow for deep discharge of the batteries. The CBI units switch from the mains to the battery in the event of a mains failure without any interruption, maintaining power security when it is most needed.

The Flex series of power supplies are greater than 90% efficient and are rated at 40, 50 and 60 deg C so you plan your DC load requirements with accuracy against temperature. There is a decoupling module available for redundancy application for up to 25A load.

With experience providing instrumentation across both Europe and the Middle East, TVR Instruments is well-versed in the source and supply of competitively priced products for use within the switchboard and control panel market.

For more information please contact us on 01206 5575755 sales@tvri.co.uk or visit our website www.tvri.co.uk

tvri
Instruments Ltd

ADSA Sponsors Industry Award



The Automatic Door Suppliers Association (ADSA) is sponsoring a prestigious award highlighting the best in electronic product design and innovation at the AI Specification Awards 2022.

Next year's biennial event, which is organised by the Guild of Architectural Ironmongers (GAI) in conjunction with the Royal Institute of British Architects (RIBA), will mark its 40th anniversary.

ADSA is sponsoring the award to support member organisations that offer products and services that straddle traditional architectural ironmongery and electronic/technological solutions. It is part of a wider move to work with other professional and trade organisations for greater resilience and integration.

Last year, ADSA joined forces with the Door Hardware Federation (DHF) to launch the Entrance Systems Alliance – an assessment centre for technical qualifications. It also supported the GAI members day this summer.

The Product Design and Innovation – Electronic Award, will be judged on effective specification and demonstrate security, accessibility and safety enhancements that also add to aesthetics, functionality and longevity.

To enter, projects or products must have been completed or released on the market between 1 October 2018 and 30 September 2021.

Entries are now open and must be submitted by 19 November 2021. Each category will have a first, second and third placing. The judges will also decide on an overall 'Winner of Winners'.

Entries should be submitted online at www.aispecificationawards.co.uk

Said Ken Price, Managing Director of ADSA: "We are delighted to sponsor the Product Design and Innovation – Electronic Award. As an association representing the powered pedestrian door industry, we are conscious that entrance solutions frequently consist of manual, electronic and technological products combined. We would actively encourage our members to enter and demonstrate the fantastic design and innovation which is regularly produced by our industry."

Douglas Masterson, Technical Manager for GAI, added: "We are overjoyed to have ADSA sponsor this award and join our judging panel. Following the postponement of last year's awards, we will be assessing projects completed and products launched over the last three years! The 40th anniversary of the award promises to be bigger and better than ever."

For further information on ADSA membership, email: rachel@adsa.org.uk or telephone: 01827 216136.

CocoonFMS™ Ltd

We are delighted to announce the office launch of CocoonFMS™ Limited.

CocoonFMS™ is a UK based Logistics software company providing innovation, tools and systems that increase productivity, create cost savings and operating efficiencies to both logistics companies, freight forwarders, as well as providing accurate data and greater connectivity to their clients.

The CocoonFMS™ team is made up by industry and digital experts who bring over 60 years of experience within logistics industry. The management team consists:

Glen Tapper – Managing Partner
Gareth Walrond – Technical Partner
James Blackman – Managing Partner
Anthony Quinn – Commercial Partner

CocoonFMS™ products bring a range of partners together to form a one stop shop for Logistics software SMEs with our FMS portal at the very core of our product offering.

"CocoonFMS™ presents an exciting proposition to the logistics industry. Digitalising the supply chain by offering affordable software solutions which can allow the SME Logistics providers to compete with the larger freight forwarders. Our expertise

in Logistics is second to none and our 'hands on' knowledge of how clients

interact with their data will be critical in providing the right software to enhance and improve our customers operations and customer loyalty". Said James Blackman.

Contact
sales@cocoonfms.co.uk
www.cocoonfms.co.uk
LinkedIn: /@cocoonfms
Twitter: /@cocoonfms



The UK's market leader in drawing management

Vistaplan is a UK market leader of manufacturing and supplying drawing office equipment and drawing management systems.

With over 50 years' experience in the industry, Vistaplan was established in 1975 by Rediweld Holdings. Head quartered in Daventry, Northamptonshire; Vistaplan supply to a range of industry sectors including construction, engineering, architecture, education and more.

Its product offering has extensive uses from graphic design and studio equipment through to home hobby



craft. Vistaplan has a vast range of products to support nearly every industry in the market. Its four main product categories are hanger systems, drawing boards, drawing storage, and traffic management, and under these come further individual products specialised to that category. From technical office equipment, art and craft stationary, filing cabinets to drawing boards and plan filing solutions for the office and on site, Vistaplan has it all.

Vistaplan has a well-established customer base, and its reviews speak for themselves. 'Vistaplan offers a fantastic price of durable products', 'Vistaplan were very efficient in handling our order', these comments are a prime example of the integrity and 100% customer satisfaction Vistaplan provide. Its high-quality services and products are accredited with ISO9001, which give customers



the reassurance that the service and products they are receiving are of the highest quality and value.

Two notable products from Vistaplan are the trolley carriers and hangers which come under the hanger systems product category. The trolley carrier is a high-capacity carrier that



maximises the number of drawings stored per square metre of floor space. Perfect for the filing of professional drawings, building plans, maps, CAD plots, posters and other large sheets. Fitted with four swivel castor wheels so its easily manoeuvrable, holds a maximum of 20 hangers, has a strong construction, and offers a capacity of up to 2000 sheets depending on paper weight. There are three trolley carriers in the collection: front loading trolley carrier, mobile display carrier, and the original trolley carrier. Each will accommodate mixed paper sizes up to and including A1 and A1 CAD.

At the core of the Vistaplan Drawing Management product range is the Drawing Hanger System, noted as the most effective and durable planfiling system available on the market. It is designed to meet the demands of today's drawing requirements and is suitable for use in the office as well



as on site. It has the capacity to store up to 100 sheets of mixed paper sizes and is available in three lengths. For reference purposes, individual sheets can be flipped through like a book. It is user friendly and robust, offering a lightweight aluminium construction with a durable powder coated textured grey finish. The Vistaplan Hanger is available in A1 and A0 sizes and can be supplied with or without a handle.

Vistaplan products are made to a very high quality, and the drawing hanger systems come with a five-year guarantee.

Contact
T 01327 704767
sales@vistaplan.com
www.vistaplan-drawingmanagement.co.uk

Housing News

Livv Housing Group helps fire service prepare for major incidents in high-rise buildings



Knowsley-based Livv Housing Group is working with Merseyside Fire & Rescue Service to help crews improve their emergency response to dealing with high-rise incidents.

A major training exercise involving the simulation of a fire recently took place at Livv's unoccupied Gaywood Green tower block, in Kirkby.

Gaywood Green is thought to be the only empty high-rise building in the country being used by a fire service to undertake live practice scenarios.

Eight fire engines, two support vehicles and an aerial platform ladder vehicle rushed to the scene. Around 80 emergency service staff took part with actors posing as residents.

The exercise gave new firefighters the opportunity to experience a realistic fire and evacuation scenario.

Learning outcomes will be shared locally and nationally to improve safety and hopefully reduce the possibility of future high-rise fires.

Tony Cahill, Executive Director at Livv Housing Group, said:

"The safety and protection of our residents is of the utmost importance to us and we are proud to be working in partnership with Merseyside Fire & Rescue Service to help them prepare for high rise emergency incidents.

"As far as we are aware, Gaywood Green is the only empty high rise building in the country that is being used for exercises like this, and MFRS will be able to share learnings with other fire services around the country."

Dave Watson, Group Manager at Merseyside Fire & Rescue Service, added:

"We work closely with housing providers and local authorities to ensure the safety of those living within high rise buildings and exercises like this are vital - we would like to thank Livv and the local community for giving us the opportunity to carry out a large exercise in a realistic setting."

For more information about Livv, visit <https://livvhousinggroup.com/> or contact 0151 290 7000.

Simple and effective system of filing large numbers of plans, drawings, maps, posters and other large sheets.

www.vistaplan-drawingmanagement.co.uk

T-T Pumps supplies pumping system to Lowestoft's flood risk management project

The consultants and contractors for the new pumping station at Velda Close looked no further than T-T Pumps to design, supply and install the equipment needed to meet the demands of the Lowestoft flood risk management project. Drawing on decades of technical and site expertise, T-T Pumps were an essential partner to ensure the scheme's success.

Coastal flooding can be a devastating event. The tidal flooding in 1953 and more recently in 2013 that saw 160 properties damaged by an extreme rain event and again in 2015 prompted Lowestoft to take action to reinforce its flood defences.

A range of options was considered to alleviate the risk posed by tidal flooding and the flood risk of Kirkley Stream. After consultation with residents, a new pumping station and flood wall were considered the most practical options to protect properties and businesses within the flood risk

area. The Lowestoft flood risk management project explained: "We will be constructing a sheet piled wall for approximately 300m along the stream to reduce the risk of flooding from the stream. We will also be building a new pumping station on land adjacent to the car park that will manage surface water from the existing drainage system during significant rainfall events. This will reduce the risk of flooding caused by the system becoming overloaded."

As the pumping station would be an essential component of the long-term flood defence strategy, it was vital that suppliers had experience in water management and the capacity to supply the pumps to be used by the project. T-T Pumps was the only choice made by the construction contractors. With an existing relationship built on trust and long-term supply reliability, the Velda Close pumping station component of Lowestoft's new flood defence project was in good hands.

"Surface water from a local housing development runs the risk of overwhelming the surface water sewer network in place," explains Jon Whittingham, Pumping Stations Manager, T-T Pumps. "T-T Pumps was tasked to aid with the design, supply and installation of a pumping station. Also, to take flows from the housing development and discharging the water into a local river which in turn runs out to the sea. This then aids in protection of the existing surface water drainage infrastructure." As the pumping station would have unique characteristics to meet the project's strict requirements, T-T Pumps' involvement from the inception of the pumping station's design was critical to the entire project's success.

Experience and technical expertise

One key aspect of T-T Pumps' involvement in the Velda Close component of Lowestoft's flood risk management project was to understand the specification of the pumping station itself clearly.

T-T Pumps' Senior Project Engineer, John Plant, commented: "The pumping station pipework, pumps, kiosk and control panel all needed to be specified. In addition, we were also tasked with the designing and the connection to the power supply the pumping station would use, plus a connection to an emergency generator was also required in the design."



John Plant continued: "Our expertise in the water management sector and the need for this project to have M&E performance specified by Anglian Water, T-T Pumps had the expertise to not only create the design for the pumping station, but also, supply the station's essential components. No other supplier has this breadth of knowledge, technical expertise, and direct supply capabilities."

The actual specification of the pumps that would be used at Velda Close included a four-pump layout with each pump capable of pumping up to 27.5% of the max discharge at the max design head. In addition, the pumping arrangement must also be capable of pumping a stepless range of flows from about 40l/s to max discharge of 320l/s.

T-T Pumps' Jon Whittingham explains: "The pumping station contained four pumps and a unique control system on site, as the flows that enter the pumping station vary. Therefore, the station may only require one pump to operate, or up to all four pumps in operation should the inflow determine this. The task was to select pumps that would handle a combination of the minimum flow rate and the maximum flow rate required, plus all flows in-between. To design a control system which would allow the pumps to react subject to demand."

The pump chosen for the Velda Close project was the Zenit UNIQA model ZUG OC200B 7.5/6AD. This was the preferred choice based upon the quality of the product, reliability, and efficiency. This pump model contains an IE3 6-pole motor providing maximum efficiency for the application requirements.

The ongoing operation of this pumping station is vital; therefore, a TT SEER telemetry unit was installed to monitor and record the station performance.

Seer is the most advanced monitoring system on the market and allows T-T to monitor pumping stations and plant 24/7 with live status and alarm activation, but most importantly, observation of the entire system with history that allows potential issues to be identified early, rather than traditional telemetry systems which are reactionary.

MD, Bob Nash concludes: "As we are the only provider who could deliver such a project T-T Pumps are unique as we truly are a one stop solution for pumping station provision. We design, manufacture, install, commission and service. No element of the works is sub-contracted, therefore we deliver on quality, service, reliability and at the right price. Our 'can do' attitude and our willingness to think outside of the box constantly delivers solutions to our clients that just work."

The Velda Close pumping station project is another example of the professional and integrated services T-T Pumps consistently deliver to the water management sector. With T-T Pumps' expertise, the residents of Lowestoft can look forward to a safe future with a massively reduced risk of tidal flooding.

T +44 (0) 1630 647200.
www.ttpumps.com





WHY CHOOSE A BBA APPROVED PRODUCT?



PROVEN AND GUARANTEED FIT FOR PURPOSE

RIGOROUSLY TESTED AND VERIFIED

FACTORY BUILT QUALITY PROVIDING SIMPLIFIED INSTALLATION

SELECT WITH CONFIDENCE

FULLY RECYCLABLE, REDUCING ENVIRONMENTAL IMPACT



T-T Pumps Planet range of Package Pumping Stations obtained BBA (British Board Agrément) accreditation back in 2006. This accreditation in conjunction with our in house manufacturing process, offering you arguably the most robust, reliable products of its kind on the market today.

With over 6000+ units sold worldwide, since BBA accreditation T-T have not had a single recorded pumping station structural failure.

With risk management being one of the top priorities on the construction agenda, you can be assured of a product that is truly proven as fit for purpose by choosing a T-T Planet range Package Pumping Station.

T-T maintain Professional Indemnity Insurance to a value of £5million a key factor for consideration when choosing a supplier of a key integral product for use within your project.

For all of your pumping station needs with a focus on both quality and reliability, contact the experts...



MADE IN BRITAIN

ttpumps.com 

01630 647200 

Optimise your pipework with swivels

Rotaflow have 35+ years experience in designing and manufacturing Swivel Joints. We solve and resolve engineering problems where fluids need to be transferred across rotating interfaces, without leakage.

Rotaflow have produced Swivel Joints for many applications within most areas of engineering and all over the world: From Brewery, Dairy, Food & Drink, Process & Plant, Drilling & Mining, Oil, Gas and Subsea, Nuclear and Chemical.

Through design and in-house manufacture our swivel joints can allow one or more different flows through a single unit, enabling the pipework to rotate 360 degrees whilst carrying fluids (including hydraulic and pneumatic) of different pressures without cross-contamination or leakage.

Some applications require articulated pipe work or hoses to allow fluids; such as Hydraulic Power, Air (pneumatic) control lines, or mixed process fluids to be used on moving machinery. Swivel joints will allow the movement on a slowly rotating drum or remove the damaging effect of twisting on hoses. By fitting a Swivel Joint you reduce the torsion in a hose/pipe so it can move more freely thus extending its life.

And there are many different forms of Swivel Joint... from very straight forward designs of our F and FS series, Compact swivels or Heavy Duty to Articulated Pipework configurations, Floating Suction Arms, Jacketed, High-pressure.

A Swivel Joint reduces costs by reducing the risk of leakage with its associated downtime. And by fitting a quality designed swivel you are improving your production capacity.

We are specialists in taking your bespoke requirements and being able to design a solution that can fit your budget, dimensions, materials, FAT/witness testing; hygienic and pressurised environments. We regularly test to Hyperbaric, Seal Life and conduct Temperature/Pressure/Load Cycle Testing. We are ISO 9001:2015 certified.

We have off-the-shelf solutions that are ready to go, or we can redesign and in-house manufacture to enable a quick turn-around with minimal fuss and maximum design experience.

Rotaflow have built up a reputation for providing reliable and quality designed products that resolve your engineering needs and we are proud to say many customers request our services over and over again.

To find out more please visit our website and/or give us a call.

T +44 (0)1663 735003
Sales@rotaflow.com
www.rotaflow.com



Changing attitudes toward manufacturing in the UK

As industry begins its recovery from lockdown, it has become evident that both Brexit and Covid are positively changing attitudes toward manufacturing in the UK. At Drallim Industries, we have seen areas of interest and growth in both domestic and overseas opportunities where sustainability has become more prevalent.

This has shown the positive side to leaving Europe which in turn has really emphasised the wide range of engineering capabilities that we have to offer. We specialise in the design and manufacture of custom engineering solutions and are complimented by a wide UK supply base that helps us deliver lifting and handling equipment as well as a host of complex customer

specified assemblies and niche products.

We are always searching for new UK sources, one example being that we had a requirement for a specialised steel needed for an obsolete project, we were able to work with one of our machining partners to source the billets to the obsolete specification right here in the UK. We work in (and with) many critical industries and have managed to successfully remain fully operational throughout the pandemic with appropriate measures in place. We even found time and energy to build our brand-new facility, placing ourselves in an exceptionally strong position to grow out of these troubled times and ride on a new wave of British manufacturing.



www.drallim.com

Bespoke Lifting and Handling Equipment




- Concept Design
- Reverse Engineering
- Obsolescence review
- Prototyping
- Manufacture / Build to print
- Qualification



Engine Cover Lifting Beams and Bespoke Trolleys



Aircraft Door Barrier (Safety Nets)



Aircraft Wheel Trolley



Watchkeeper Stowage Trolley



Bespoke DMRT Lashing for the QEC



Nose Cone Cover



Wheel Dipping Frame

Drallim Industries Limited
Millwood House, Drury Lane,
Ponswood Industrial Estate,
St. Leonards-on-Sea,
East Sussex, TN38 9BA
Tel: 01424 205140 | Sales@drallim.com
www.drallim.com

ACCREDITATIONS: BS EN ISO 9001:2015 | BS EN ISO 14001:2015 | BS EN ISO 45001:2018 | AS9100D: 2016





THE PLACE FOR Failure Analysis and In-depth Non-Destructive Inspection

Cupio Services brings knowledge and expertise gained through many years of working with some of the world's best X-Ray, test and AOI systems to our new facility in Chineham Business Park, Basingstoke.


Whether you need to diagnose production or in field failures, validate complex manufacturing procedures or perfect new product introductions, we're here to help.

We have a variety of cutting-edge inspection and test equipment on hand, including functional testers and counterfeit part detection, high resolution x-ray with multiple CT imaging options, and acoustic microscopes for delamination detection within boards or complex devices.

We have the capability to find the smallest defects within your samples and image them with sub-micron resolution. Full failure analysis reports can be provided to help you understand where and how issues are occurring.

Cupio Services Ltd ☎ +44 (0) 1256 262800 ✉ info@cupioservices.co.uk 🌐 www.cupioservices.co.uk

Beechwood, Chineham Business Park, Basingstoke, Hampshire, RG24 8WA



LAUDA – Experts In Thermal Control And Measurement

LAUDA continues to provide an expanding range of feature-rich, future proof solutions with energy efficiency and connectivity front of mind, serving a diverse range of industries including chemical, pharmaceutical, biotechnology, oil and gas, composites, automotive, aerospace food & beverage, brewing, digital printing, laser and beyond.

LAUDA's new range of water chillers has been designed not only to comply with the new Eco-design directive, but to surpass it through the innovative use of variable speed modules that automatically reduce their duty cycle in line with the cooling demand hence reducing energy consumption and running costs, giving a tangible return on investment for the user, whilst ensuring full compliance with the latest regulations on refrigerant (fluorinated) gases.

Further portfolio expansion delivers the new LAUDA 'Versafreeze'

ultra-freezers, (deep-freeze storage down to -85°), and higher power 'Integral' process circulators, (process control from -90 to 320°C with >25kW of cooling @20°C), with pressure overlay options to increase the working range of water / glycol up to 140°C.

With the capability to provide accurate heating and cooling in the range -150 to +550 °C using a variety of proven modules including heat transfer systems, process cooling systems, secondary circuit systems, fired heaters and molten salt plants, we are able to provide unique, cost-effective solutions unparalleled by others.

Beyond temperature control, LAUDA has a well-established suite of solutions for measuring viscosity and surface/interfacial tension aimed at the development of polymers, oils, and surfactants.



We look forward to hearing from you.

BPLAUDA22

T +44 (0)1780 243118
 info@lauda-technology.co.uk
 www.lauda-technology.co.uk
<https://www.linkedin.com/company/lauda-technology-ltd>
<https://www.facebook.com/LAUDA.UK/>
https://twitter.com/lauda_uk



STAINLESS STEEL METRIC FASTENERS



Purchase fasteners, nuts, bolts, screws and more online at PTS – one of the leading global suppliers of industrial stainless steel products.

- Stock range from M1.0 to M36
- A2 and A4 materials available
- Large stocks, fast delivery



Please visit to find out more: www.pts-uk.com
 Telephone: +44 (0)1342 410758 | Email: info@pts-uk.com

Experts in Stainless Steel fasteners

Based in East Grinstead in the UK, Precision Technology Supplies Ltd (PTS) is a company dedicated to the provision of stainless steel screws, nuts, bolts, washers and precision turned parts. The leading trader has more than 30 years of experience working within the industry and boasts the largest range of high quality metric and American threaded fasteners from stock.

Because of its extensive offering and great deal of expertise in its chosen niche, PTS has become one of Europe's most significant suppliers of stainless steel industrial fastenings and precision turned parts.

Its selection is incredibly far-reaching, and includes the following items: nuts, hexagons,



shoulder screws, studs, self-drilling screws, retaining rings, drive bits, washers, machine screws, slotted grubscrews, knurled fasteners, woodscrews, screws for plastics, rivets, allied products, socket screws, security screws, pins, self-tapping screws, chipboard screws, pipe plugs and Bumax.

As well as its impressively vast selection of accessories, PTS can bring to the table over three decades of experience in the management of an increasing number of customer production lines and, with its knowledge of Direct Line Feed operations, the team of professionals can competently provide solutions appropriate to unique client applications.

If you are looking to source a particular product, or if you would like further information about what type of part would best suit your specific application then please don't hesitate to contact PTS.

You can get in touch with a knowledgeable expert by telephone or email or you can visit www.pts-uk.com to find out more.

Versatile and now also explosion-safe



The Schmersal Group have expanded their existing range of switches for heavy industry to include explosion-proof variants that are suitable for use in areas at risk of explosion. The pull-wire emergency switches in the EX-I-ZQ900 and EX-I-RS655 series as well as the belt misalignment switches in the EX-I-BS655 and EX-T. 454 series can be used in dusty environments in Zone 21 in ignition protection class Ex tb 'Protection by enclosure' or in gas atmospheres in Zone 1 in ignition protection class Ex ib 'Intrinsic safety'.

The new versions expand the possible range of applications for these switches:

The variants certified for Zone 1 have been designed for applications in which hazardous gases could occur, such as in the chemicals and petrochemical industry as well as in refineries, landfill sites and recycling plants.


Switches that are certified for Zone 21 are suitable for areas outside of dust-enclosing containers, such as near to filling and removal points, conveyor belts or HGV dumping points, such as those found in recycling plants, gravel and cement works, thermal power plants and in the metalworking industry.

Pull-wire emergency switches for safe and reliable shutdown

The EX-I-ZQ900 pull-wire emergency switch with single-sided action is used on machines and systems in areas at risk of explosion, where there might be the need to trigger the emergency stop command at any point along the route of the wire. With a wire length of up to 75 m, it offers numerous contact combinations for a safe and reliable shutdown as well as simple, quick diagnosis.


For greater distances, there is the EX-I-RS655 pull-wire emergency switch with two-sided action. The main characteristic is a significantly reduced installation cost, made possible by the wire length of up to 2x 100 m as well as by the central connection terminal. The central connection terminal enables quick and easy wiring. The EX-I-RS655 with integrated DuplineSafe interface for safe series connection, including diagnostics, is available as an option.

Contact www.schmersal.co.uk





Tel: +44 1450 420017
www.anuacleanair.co.uk

Leader in Odour Control and Biogas Cleaning Units



"Anua Clean Air UK offer proven, patented clean air bio-technologies, which provide best-in-class process performance with the lowest utility and life cycle costs"

Mónashell – Mónafíl – CrumRubber – Mónasorb
 – Skid Mounted Odour Control Units –
 Media Replacements - OCU Health Checks


100 YEARS EST. 1919

Celebrating One Hundred Years Of Engineering Excellence

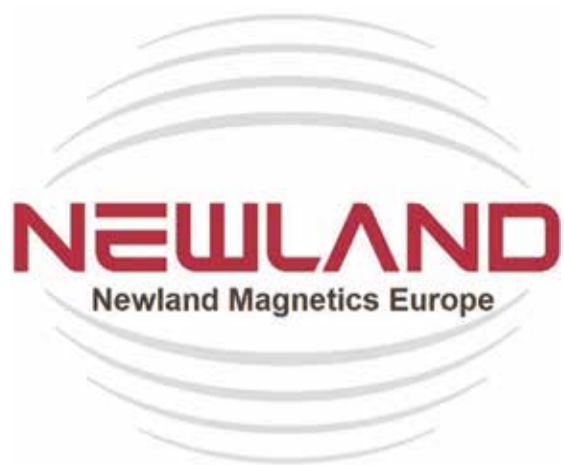
Leading Specialist Manufacturer and Producers of Bespoke Power Screws



- Ex stock power screws & nuts
- Precision-machine components
- Self-reversing screws and followers
- Specialist leadscrew & power screw products
- Accredited by Aerospace, Nuclear & Chemical customers

Kingston Engineering Co. (Hull) Ltd
 Pennington Street, Hull, East Yorkshire. HU8 7LD, UK
 Tel: +44 (0)1482 325676
 email: sales@kingston-engineering.co.uk
www.kingston-engineering.co.uk





T +33 (0)5 45 83 99 59
info@newlandmagnetics.eu

www.newlandmagnetics.eu

Newland Magnetics Europe with its offices and warehouse located in Cognac France are part of the Ningbo Newland Magnetics group who have been manufacturing Sintered NdFeB magnets and magnetic assemblies for over 12 years.

Now with an annual turnover of more than €30M, ISO9001:2008 & TS16949 accreditation and production capacity of 1,000tons per year Newland Magnetics is rapidly becoming one of the largest producers of high quality NdFeB magnets in China.

Newland Magnetics Europe can provide material data, technical, design assistance and sampling to assist with your application.

Once in production we can also provide a range of stocking options including consignment stocking at our location in France or within your own facility.

Newland Magnets also supply Bonded NdFeB, Flexible magnetic sheets, magnetic powder, AlNiCo, SmCo and Hard ferrite magnetic material and complete magnetic assemblies.



Real Tamper Evidence Is An Integral Part Of The Supply Chain

The increase in need, leads to growth in opportunities for tamper evident security. The role of "real" tamper evident security labels and box tapes is developing quickly, as an integral part of the supply chain in 2021 for B2B and B2C. The growth in two major market sectors; food delivery and logistics has seen demand increase for practical, effective and technical security solutions to protect goods from interference on their journeys.



The food home delivery market has grown exponentially across fast food deliveries,

meal subscription boxes as well as the increase in online supermarket shopping.

Within the logistics and supply chain sector the multi layered security approach for inner and outer packaging supports product traceability through utilising sequential numbers, barcodes and QR codes which can be paired with tamper evidence. Thus, delivering robust, secure packaging solutions from the threat of counterfeiting, theft, contamination and exposure especially with the extended supply chains now having to be a consideration too. Tamper evident labels are practical to use

and provide an instant layer of security. These tamper evident labels, tapes or perforated strips of liner-less labels are an inexpensive, fast solution to securing packaging. The flexibility of product design, security features and adhesives, ensures that the labels and tapes can be applied successfully to many surfaces from cardboard, plastic, painted metal to glass, wood and flexible packaging.

Permanent tamper evident tapes provide clear indication of tampering by revealing a hidden message when peeled off or altered that cannot be replaced. The permanent message left on the

surface is called the void message and this can be as simple as words, in any language, saying, OPENED, DO NOT USE IF SEAL BROKEN to barcodes, numbers and QR codes verifying the products authenticity.

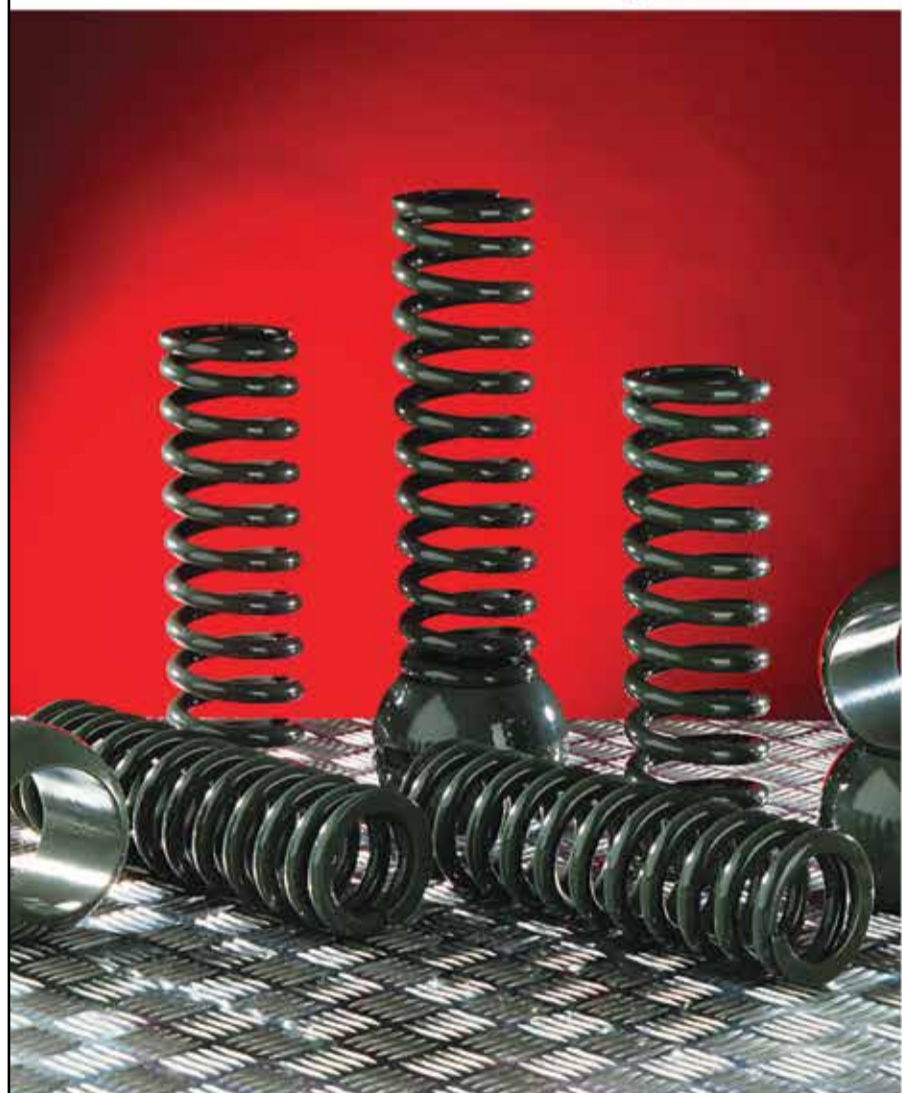
Tamper evident tapes and labels are easy to integrate into existing processes so there is no cost to change, just enhanced security and consumer protection.

To find out more contact
T 01335 300335
Harriet@tampertech.net

CURTISS - WRIGHT

Curtiss-Wright Surface Technologies, Everlube products & Coating Services

Protection & life extension of your critical components throughout any crisis!



- COATING SERVICES:**
- Thermal Spray & HVOF Coatings
 - Dry film lubricants - MoS₂, PTFE, Graphite, WS₂
 - Coatings for corrosion, chemical & environmental protection
 - Titanium anodising
 - Zinc rich coatings for corrosion protection
 - Impingement coating processes for ultra thin solid film lubricants
 - Nonstick/release coatings for low coefficients of friction
 - Primers for rubber and plastics for sound absorbing and dampening materials
 - High temperature resistant coatings
 - Rare earth magnet coatings
 - Coatings for EMI/RFI shielding provide highly conductive coatings and platings to control electromagnetic interference
 - Ultra thin conformal parylene coating to reduce friction and protect against contamination
 - Pre-treatments including Ti Anodising, Phosphate Conversion Coating and Chilled Iron Blasting, Aluminum Oxide Blasting and Vapour Degreasing



Coating Services and Everlube® Products

+44 (0)1386 425758 | eurosales@cwst.com | www.emcoatingsuk.co.uk

Finpromach Ltd Improves Your Process Efficiency and Operator Safety



Finpromach Ltd, established 2018, uses 25 years of industry experience to represent equipment from prestigious manufacturers from the UK, Europe and USA including Palamatic, Gericke, Andocksysteme, Austar UK, LAST Technology, Vac-U-Max, Bila (Global AGV) and Hallins.

Operating in the fields of Powder and Materials handling, Containment, Isolation, Washing and Sterilisation widely used in regulated industries such as Pharma, Food and Chemical.

Recently developed with Palamatic, was a new fully automatic ATEX compliant sack opener to replace conventional manual sack tipping stations.

The PAL F-AST (Palamatic Fully Automatic Sack Tip) occupies a small footprint and addresses problems of manually handling and opening sacks. Operators can process a range of sacks without concern of manual handling contravention (HSE) and exposure to dust potentially hazardous to health (COSHH).

The PAL F-AST opens sacks at 1-5 minute within a dust tight cabinet, then compacts the emptied sack into a polythene tube for easy waste sack removal.

Complementary ancillaries include vacuum sack lifter, robotic infeed, explosion mitigation, size reduction, powder grading, rotary valves, CIP, drying and a conveying system for the next stage of the process such as mixing.

Using equipment from Finpromach improves house-keeping, process efficiency, manual handling, operator safety, especially when dealing with dusty or toxic compounds.

Finished product quality is ensured to limit wastage from contaminated batches of product, whether that be pure printing inks, injectable vaccines, or food ingredients.

Recent news is the partnership with Bila and their Global AGV automated pallet handling solution. Repetitive pallet movements (such as end of line to wrapper and then warehouse) can be automatically undertaken without operator intervention. With a fast payback time process efficiency is vastly improved, with no product or fork lift damage caused by human error or carelessness. Routes and procedures are easily altered by the local supervisor using the innovative control interface requiring only a single day of training.

Contact
M +44 (0)7985 332025
sales@finpromach.com
www.finpromach.com

Enimac - tape application solutions for your industry

Some types of tape application require a more complex complete system.

We have supplied 2- and 3-axis cartesian solutions to the automotive, shipbuilding and appliance industries and a pick-and-place solution for applying die-cut tape strips in medical sample-collector production with new projects in other industries in development.

If you're looking to automate tape application in your industry, you owe it to yourself to talk with a company with experience that has a wide range of ready solutions and is constantly developing more.

Talk to Enimac!

For inquiries contact Enimac directly at www.enimac.it/en or sales@enimac.it



After a period of internal development, we started selling table top and wider format stand-alone tape application machines in 2013, applying many types of tape from transfer tape to thicker foam tapes in the printing and packaging industries.

production lines, other machines and on robots/cobots working both with final clients and systems integrators. You can find our applicators integrated in the automotive, aerospace and appliances industries.

Since these machines apply tape to "anything flat", we soon had clients also using these machines in the production of aluminum wall signs and wall protection strips in PVC.



We have since expanded our business to include applicators for integration, into





Tape Application Solutions For Your Industry








contact us

www.enimac.it

sales@enimac.it

Tape Application Made Easy



MADE IN ITALY

Has ergonomics of blue-collar industrial workers been forgotten?

Ergonomics at work is a hot topic at the moment. Office workers around the world have switched working at homes instead of company offices.

Sales of electric desks and home office furniture has spiked in many countries with the aim of improving home office

ergonomics. But how is the ergonomics of industrial blue collar workers?

Treston, a global leader in manufacturing ergonomic industrial furniture and workstations, has put together an information package concentrating especially on the

ergonomics of mobile industrial work in order to raise awareness of the importance of good workstation ergonomics, both for the employer and for the employee.

Why concentrate on mobile industrial work? Manual handling of loads is generally considered an



occupational risk factor for low back and shoulder complaints (1) and it is in fact the most common cause of occupational fatigue, low back pain and lower back injuries (2, 3).

This information package offers practical information and advice for employers on how to improve ergonomics of mobile industrial and work. We also explain why companies should invest in ergonomics.

The information package includes, for example:

- ▲ Video “How to choose an ergonomic trolley for industrial tasks” sums up the most important ergonomics factors to consider while selecting a trolley for industrial tasks
- ▲ Tips to consider when designing an ergonomic, functional and productive workspace, for example: How do the in-house logistics flows affect the workspace layout? How are components and materials stocked to the workspace? How do parts arrive and leave? Is there a need for mobile storage or transportation trolleys?
- ▲ 9 points checklist: “What to consider when selecting a trolley for industrial tasks”
- ▲ Full information package on ergonomics for manual handling of loads, concentrating on:
 - Pushing and pulling from ergonomics viewpoint
 - How does handle size, position and design affect ergonomics?
 - The role of castors in minimizing the forces needed to move trolleys
- ▲ Fact sheet: Why should you invest in ergonomics?
 - FACT: Musculoskeletal disorders (MSDs) affect most employees
 - MEASURES: Proper ergonomics can reduce MSD-related absences as much as 72%
 - RESULTS: Productivity improved 46%

TRESTON

3d.treston.com

Design your own workbench AND VIEW IT IN 3D

3d.treston.com

Contact www.treston.com

QUALITY HINGES FOR OVER 200 YEARS

Gold & Wassall have been manufacturing hinges for over two centuries, so it's safe to say we know what we're doing. Our team of experts can design and manufacture almost any hinge, for any application. We have made upwards of 250,000 unique hinge designs, with more designs being drawn up each day.

SEE MORE AT GOLDWASSALLHINGES.CO.UK/BESPOKE



BESPOKE HINGES



GOLD & WASSALL

EST. 1790

01827 63391 - SALES@GOLDWASSALLHINGES.CO.UK -  [@GWHINGES](https://twitter.com/GWHINGES)