

Building & Construction Review



South West Lighting Protection



ranging from churches, schools, and facilities management companies, no job is either too big or small.

Our works are coordinated from our office locations in Plymouth and Scotland, so wherever your project may be located we are able to provide our full range of services.

In recent years we have expanded our services to our clients to include the Test and Inspection of roof mounted horizontal safety systems, anchors, access ladders, and guard rails, which provides a costs saving when combined with our lightning protection inspections

Whatever your requirements we are here to help

T 07807 334441
www.lightningconductor.org



South West Lightning Protection was formed in 2014, by Gary Libby, who has over 39 years' experience within the lightning protection industry. South West Lightning prides itself on providing a high level of service to our customers, and ensuring works are carried out on time and within budgets. The company has full in depth knowledge of current Lightning protection standards, and can design, install, and maintain all lightning protection systems, complying with BSEN62305, older BS6651 systems, and alternative Early Streamer Systems.

In conjunction with our partners we are able to provide surge protection designs and installation, which enables us to provide a full turnkey service to our clients which request it

SWLP are safety audited by Safecontractor to ensure high levels of Health and safety are maintained during the course of our works. Engineers are trained in all aspects of lightning protection, and are DBS checked, and hold security clearance for works within the Ministry of Defence estates.

South West Lightning Protection core services are provided to the commercial sector, Ministry of Defence, and Telecoms providers, However we are also involved with numerous individual clients,

Goland Recruitment



Goland Recruitment was established in 2012 to provide the Recruitment Industry with "Quality Driven Recruitment".

At Goland Recruitment we are confident we provide a service second to none.

We are hands on and work closely with our clients and candidates to ensure that the best service is delivered to fulfil both their expectations and requirements.

Making sure that each of our clients and candidates receive the most professional service we can offer. This approach is embodied in our company ethos of providing "Quality Driven Recruitment".

Goland Recruitment is committed to sourcing people who are genuinely interested in what they do. We realise costs are important, so we strive to offer the best value for money and costs that are totally transparent with no hidden extras.

www.goland.group



HouseWrapped
See on page **05**



Service Sealing Solutions Ltd
See on page **07**



Mudcontrol Ltd
See on page **08**

SUNSHADE SERVICES LIMITED



- Thousands of Design Options Available
- Up to 100% Shade Cover & 100% UV Resistance
- Bumper Pads Fitted as Standard
- Designed, Manufactured & Fully Installed

Specialist all-weather outdoor structures & shelters

01782 398848 / 07807 063734

info@sunshadeservices.co.uk
www.sunshadeservices.co.uk



Stunning Staircases and modern spiral stairs



With a focus on the passage of light, Complete Stair Systems offers a breathtaking assortment of staircases for new builds and refurbishments. Supplied nationwide to contractors, builders, and end users alike. Constructed in combination of steel, timber, and glass - fully custom made to become the main feature of a hallway.

MODEL 500 STAIRCASE

Slim line steel stringers with solid 50mm treads and frameless glass panels. An extremely versatile staircase supplied in a variety of configurations and finishes. Risers are open as standard but can be partially closed with riser bars, timber downstands or half glass risers. A modern and industrial solution.

WF FLOATING TIMBER STAIR

A revolutionary cantilever type staircase for a fraction of the cost. The WF is a floating staircase that does not need a

steel beam embedded in the wall but instead takes its strength from a 42mm timber wall stringer and a specially designed handrail on the open side.

CUSTOM MADE SPIRAL STAIRCASE

Complete Stair Systems has developed a custom-made spiral that can be personalised to suit the client requirements with a huge variety of materials. From the core steel structure, there are over 20 different materials the client can choose from to upgrade and customise their spiral staircase. Supplied in diameters up to 2100mm and is designed for domestic and commercial applications.

KIT STAIRS

On top of the core offering of show stopping custom made staircases, the firm also offer a large range of 'off-the-shelf' staircases solutions. These are prepacked kits with adjustable elements meaning one size fits all. Again, with a modern style these stairs are available in spiral and in straight flights and are generally recommended for loft conversions.

Contact
T 01794 522444
info@completestairssystems.co.uk
www.completestairssystems.co.uk



Vision Development
See on page **10**



Solution Fires
See on page **16**



Direct Hoist
See on page **24**



STORAGE PROBLEMS?

We've heard it all.
Better yet, we've solved it all.

Get in touch with our Business Services team today to book your **FREE** consultation.

The trusted experts in space utilisation.



Scan me



BiGDUG[®]

WWW.BIGDUG.CO.UK 0800 141 3380

Zoo Hardware launches new exclusive collection



In this issue of Building and Construction Review, we are proud to announce that we have selected Zoo Hardware as the recipient of our Product of the Month Award for its innovative product range, Rosso Tecnica.

Zoo Hardware is a designer and supplier of architectural door hardware, including door handles, knobs, locks, hinges and much more. Ensuring its products meet the highest standards, Zoo Hardware uses high quality aluminium, brass, steel and zinc. This eye for detail and strive for quality is of the utmost importance for Zoo Hardware and as such, the company is confident that it can provide the highest quality products at the most competitive prices.

Boasting unrivalled design skills produced by the company's in-house design team, Zoo Hardware assures its customers that they will receive top-end products, developed by its team of fully qualified designers in all aspects of design and production.

The team constantly aims to push the boundaries of possibility for its designs, creating innovative, stylish and cost-effective hardware solutions.

Through this determination to consistently innovate, develop and deliver state-of-the-art products, Zoo Hardware has designed Rosso Tecnica a new and exclusive collection of European inspired designer levers.

Manufactured from Grade 304 stainless steel, which has been selected for its high-corrosion resistance, durability and hardness properties, this range has been specifically designed to provide an exceptional performance for use in both domestic and commercial applications. Where applicable, the range is also approved for use on Fire resistant door sets meeting the requirements of BS EN 1634-1 to be suitable for fire and smoke door assemblies.

Taking inspiration from contemporary trends which focus towards minimalism and simplicity, Zoo Hardware identified a gap in the market and need for a new range of high performance, design-led furniture, with hard-wearing decorative finishes; powder coated matt black, PVD satin brass and PVD satin bronze, to stand up to today's requirements for hardware. The Rosso Tecnica range delivers high-quality door furniture with a stunning aesthetic appeal to suit any modern interior.

With a broad range of lever styles to suit even the most discerning tastes, from the industrially styled 'Orto' lever to the subtle curves of the 'Como', each design has been meticulously created to be both ergonomically and aesthetically pleasing, while meeting the technical requirements of the applicable BS EN standards.

Rosso Tecnica has been designed and produced using a combination of both solid cast components and tubular components, where quality is the main consideration with an efficiency of material use to maintain cost effectiveness. This gives the range affordability while maintaining an exceptional, quality look and feel, and if your specification requires consideration around The Equality Act, the Maggiore Lever is a 19mm diameter, return to door lever that meets the dimensional requirements of BS8300 and Approved Document M of the building regulations.

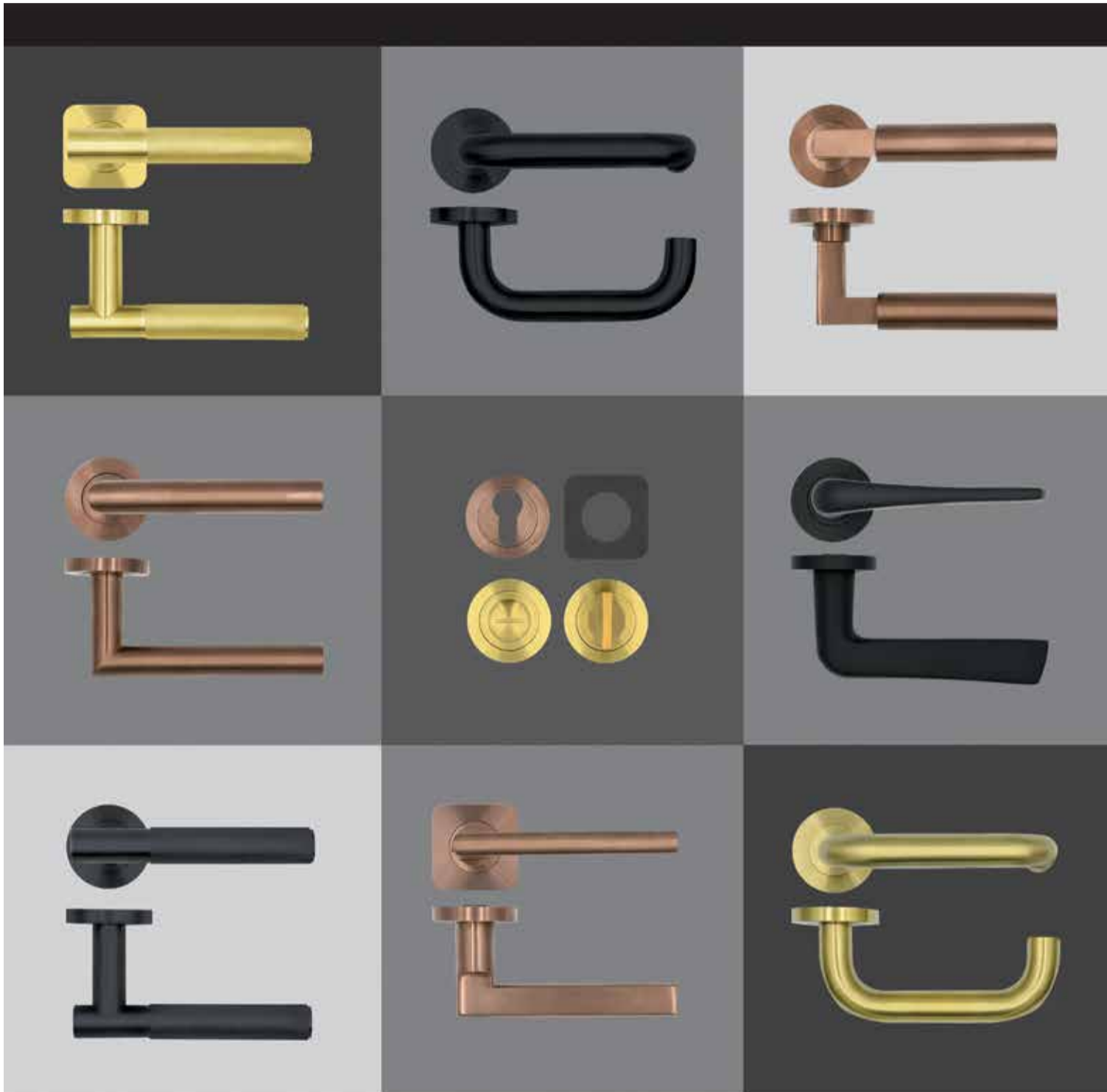


The introduction of a newly engineered 'Squirrel' rose, a rounded square known in mathematical terms as a 'superellipse', allows the complete customisation of both the levers and accessories to have a completely different look and feel from the standard round rose option. As well as being aesthetically pleasing, the Squirrel rose has been designed for easy installation on the existing sub-rose, making it a simple and cost-effective solution for creating a modern and fashionable environment. The product is supplied with both wood screw and bolt through fixings, and a far more user friendly allen key for installation of the grub screws that are situated on the underside of the lever for improved aesthetics. All levers are supplied on a sprung rose configuration for improved operation and longevity.

It's not just about the levers either, Rosso Tecnica is a fully suited range, with complementary products including, hinges, door closers, flush bolts and more, being offered in each of the three hard-wearing finishes to create the perfect aesthetic for your project, whether it's a residential dwelling or commercial office space. One final thing to note, as part of Zoo Hardware's ongoing commitment to reduce their impact on the environment, the Rosso Tecnica range is supplied without any plastic / polybag packaging allowing users to easily recycle all of the waste packaging.

For any further information on the Rosso Tecnica range, please see the details featured below.

T +44 (0)1228 672900
sales@zoo-hardware.co.uk
www.zoohardware.co.uk



ROSSO TECNICA
 ACCIAIO CON STILE

ROSSO TECNICA is our new and exclusive range of European inspired designer levers. Manufactured from Grade 304 stainless steel and finished in a new selection of stunning hard-wearing finishes, these levers are the perfect accompaniment to the latest trends in interior fashion.



AS PART OF OUR ONGOING COMMITMENT TO REDUCE OUR IMPACT ON THE ENVIRONMENT, THE ROSSO TECNICA RANGE IS SUPPLIED WITHOUT ANY PLASTIC PACKAGING, NO POLY-BAGS ARE USED IN THIS RANGE.

T : +44 (0) 1228 672 900
 E : sales@zoo-hardware.co.uk
 W : www.zoohardware.co.uk

Rosso Tecnica is part of Zoo Hardware



Heating up the industry with its selection of cast iron radiators



Established in 2001, Trads specialise in traditional cast iron radiators and accessories that provide a unique form of heating, which incorporates the characteristics of the past with the functionality and design of the present. Providing a range of both traditional and contemporary cast iron radiators, Trads maintains a selection of options including custom designed and ready made radiators, all with a lifetime guarantee.

Celebrating its impressive 20th year anniversary, Trads has the expertise and skills to provide a turnkey service, using its team of craftsman create all orders in house, handcrafted in Lincolnshire.

"We provide cast iron radiators and all accessories. We cover the whole of the UK and we also supply overseas as well, including to Europe and sometimes to Dubai, United States, Russia, Australia and New Zealand." Stated Barry Whitehead, Sales & Marketing Manager.

Featuring distinctive designs, produced from quality materials by a highly skilled and experienced team of craftsmen, Trads is well equipped with the knowledge and expertise to create bespoke, made to order radiators. Utilising their skillset, the team works hard to provide fashionable traditional designs with the innovative functions and practicality of the modern era.



Boasting such impressive design capabilities, Trads is able to provide designs in any desired colour and provides a diverse selection of finishes including painted finishes, hand burnished, highlight polished, satin polished and antique finishes.

"We offer over 10,000 colours, with some of the top brands including Farrow & Ball, Robersons Liquid Metal and Little Greene. We can do a colour match sample service, so if you have a



wet sample we can colour match it. We also provide free UK Mainland delivery on Accessory orders over £149 and all Radiator orders over £449 including VAT." Said Barry.

Providing a top quality customer, the company places the utmost importance on its customer service and ensures it meets all customer enquires in a timely, efficient manner.

"We like to make sure that we can answer queries from customers as fast as possible, in a timely manner and we have spent quite a lot of time investing in our services, making sure our responses are helpful and quick. We have had great customer reviews and have a 4.5 star rating on Trustpilot." Added Brian Athey, Director.

Renowned for its customer service, Trad's has



built a resounding reputation on first class customer service. See a few examples of its outstanding customer reviews below.

5 stars – 'This Companies Customer Service Is 5* 'Ordered 4 Dragonfly cast iron radiators, custom sizes so had to wait several weeks but was aware of that. Radiators arrived and as warned, it was an outside delivery, we had to get the radiators to their final locations, make sure you have help, these can't be moved by one person, I had my sons help me, both adults and I needed the help. When fully built the largest radiator weighs about 40 stone. We had a couple of small issues during the assembly stage but Trads were more than helpful and sent us some small spares FOC. This companies customer service is 5*, I couldn't be any happier



with them or the product. All are now working, keeping us warm during this cold winter and look amazing.'

5 stars - 'Absolutely Delighted With My Beautiful Hand Burnished Radiators. All the staff are very helpful and they really went above and beyond with the after-care to make sure everything was perfect. Can't recommend them highly enough.'

With such a big focus on customer satisfaction, Trads also provides a virtual service for its customers using its website. "We have an option if you go on our website, where you can create your own radiator. This allows you to visualise the product and fully customise it. The website does a good job of visualising for customers as they are able to look at the product, where it is and see the size of it within the room." Said Brian.

A statement piece to complement the household, cast iron radiators lend themselves seamlessly into any interior. Not only for use domestically, Trads has also worked on many commercial projects too including Newcastle University, Stately Homes, Manor Houses, Mill Bank (Central London) Residential Conversion Project, offices and many more.

After what many have seen as a challenging year, Trads has been happy to carry on providing its services throughout the COVID-19 pandemic and has been busier than ever. As such, the company is currently making significant investments in its infrastructure to increase its capacity.



"We did see that an increase in demand last year, which was significantly higher than what we've experienced before. We've now invested to increase our capacity and to help us to be able to grow the business going forward." Mentioned Barry.



Brian added, "We are also putting more models into our Ready Made Radiator range for last minute customers. We have these available for people that are in a rush and require a faster solution. They can go on this range, click on it and have a very quick service, with a delivery of just 2-3 working days."

Committed to excellent customer service, Trads boasts an unrivalled outstanding customer service, complemented not only by its lifetime guarantee on all cast iron radiators but also through its selection of extra benefits, including a 5% discount on all orders over £3000.

For any more information on Trads, please see the details below.

Contact
T 01400 283320
www.tradscastironradiators.co.uk

Insulation and Air Source Heat Pump Grants



Coinciding with the UK government's goal of achieving net-zero carbon emission by 2050, many companies across the country have started leveraging technology to measure and indicate their corporate carbon footprint. Net-zero refers to achieving a balance between the amount of greenhouse gas emissions produced and the amount removed from the atmosphere.

The four highest-emitting sectors are transportation, energy supply, business, and residential (heating homes). Together these account for around 78% of current emissions, as a result, HouseWrapped is committed to change.

HouseWrapped is based in York and its accredited and experienced installers work to deliver a specialist home insulation service. The company was established by Chris Fryer eight years ago, and its team of installers carry PAS2030/2035 accreditations, have full liability insurance, are CRB checked and have over 10 years' experience in the home insulation industry. Its team is one of the UK's number one choices when having any insulation products installed in your home either via an ECO grant or self-paid.

"Our main function is to facilitate the use of UK Government ECO (Energy Company

Obligation) Funding grant. The funding is open to all UK homeowners and tenants who are in receipt of a state benefit. We are also responsible for doing any home surveys and producing an EPC for your house if required," said Chris.

Its services that contribute towards insulating a home are loft & underfloor insulation, cavity wall insulation, solar PV & battery storage, energy saving systems, heating replacements, first time central heating, and air source heat pumps (ASHP). Whilst on-site, HouseWrapped carry out a full property survey which includes measuring floor space, checking heating systems, wall width, guttering, doors, and more. Installation is carried out approximately 14 days after the survey by one of the company's fully trained and experienced installers.

If you're looking to change your current heating system in accordance with government guidelines and replace it with something more energy-efficient and environmentally friendly, an air source heat pump (ASHP) is the solution.

But what is it?

ASHP is a system designed as an eco-friendly alternative to heating a home. Usually placed outside the back or the side of a property, it works by taking heat

from the air, and then using the heat pump to boost it to a higher temperature. It only uses a minimal amount of electricity to run the pump making it much more environmentally sound.

But how does it work?

The ASHP takes air from outside to heat a liquid refrigerant, through electricity the pump compresses the liquid to increase the temperature. This then condenses back into a liquid to release the stored heat. The heat is then sent to the underfloor heating and/or radiators, with the rest being stored in a hot water cylinder. The stored hot water can be used for taps, baths, showers, and more.

Unlike oil or gas boilers, heat pumps have a number of cost-effective benefits and can deliver lower temperatures of heat over a longer period of time. It's simple and effective solution has many advantages including reduction in carbon emissions, no more fuel deliveries, a reduction in fuel bills, a potential



The benefits for the customer include access to a new heating system, improved energy rating, and an overall saving on their energy bills. Please see the website below to check if you qualify for a free or heavily discounted ASHP.

Always keeping the customers best interests at heart, HouseWrapped provide an honest and trustworthy service, promising to only fit ASHP into houses that will reap the benefits from the unit. As not every property is suited for an ASHP, HouseWrapped use its experience and expertise to ensure its



income via the UK government from the Renewable Heat Incentive (RHI) and can heat both the home and water.

ASHP is used in conjunction with proper insulation to your home, such as cavity wall and loft insulation, and even though the results are significantly beneficial to your wallet in the long term, initially not everyone can afford to buy ASHP outright.

HouseWrapped is supported by the Assignment of Rights (AoR) Fund, which is a government funding agreement scheme designed to give third-party investors the ability to fund the installation of ASHP for homeowners across the UK by installers who are MCS certified. Under this scheme the company installing the system will fund the purchase and installation costs, they will then be entitled to receive the rights to any RHI payments that are made. The aim is to combat climate change and foster an environment that is carbon-free.

customers are always getting the best service for their property. HouseWrapped has a passion to reduce carbon emissions in domestic housing and fully backs the net-zero target implemented by the UK government. It has adapted an ecological approach to become more responsible, sustainable and carbon neutral, and is currently working to increase the availability of renewable energy solutions to its customers. By outsourcing a greater selection of products from various manufacturers, the company is looking for more sustainable, zero carbon emission technology in the UK for its customers.

For more information, see below.

T 0800 689 4483
info@housewrapped.co.uk
www.housewrapped.co.uk



Comprehensive paint spraying services



RJ Spray was established in 2018 and has developed an outstanding reputation, renowned as a specialist in on-site spraying and commercial decorating. Based in Cardiff and Portsmouth, RJ Spray provides a specialist onsite coating service to a range of sectors from industrial to residential, throughout the UK.

Providing expert knowledge and high quality products, RJ Spray's team of tradesmen have over 60 years of combined experience in the industry operating across the UK. Its quality products are supported further with an up to 25 year warranty, leaving its clients assured that their decoration project will stand the test of time.

Displaying a large, diverse range of colour options, RJ Spray's clients are able to pick the most appropriate colours for their properties' interior and/or exterior design and each product is tested extensively by RJ Spray's team and given their seal of approval.



The team at RJ Spray are experts in their field and provide advice on which materials will best suit each clients individual property. Whether it's for recolouring a large warehouse or shopping centre or simply retouching a front door; RJ Spray is here and happy to help.

In terms of its external decorating and repairs services, RJ Spray provides services for building recolouring and spray painting, shopfront decoration, window frame recolouring and treatment, cladding, roofing coatings and repairs, cut edge corrosion, gutter and skylight treatments, paint repair and re-spraying and much more.

RJ Spray ensures it maintains a range of colour and material options for decorating and for protecting the property's exterior,

the company is well equipped to assist its customers in helping to make their project, become a reality.

The company takes pride in helping to transform interior spaces and is proud to be able to go beyond just wall and ceiling painting, offering a service for spraying furniture and other items. This is another example of the company's commitment to customer satisfaction, and helps clients greatly reduce costs by revitalising and enhancing old or used furniture, doors, etc. and bringing them back to life again instead of purchasing new! It's services such as this that echoes RJ Spray's team's resourcefulness and dedication to its clients, to provide an affordable alternative.

RJ Spray has worked with many prestigious and renowned industry leading names, working both directly and through working with other contractors. These include names such as: Pets at Home, KFC, The Gym, Transport for Wales, Pizza Hut, Whistles, the NHS and many more.



After facing new challenges presented by the COVID-19 pandemic, we caught up with John from RJ Spray and asked him how the pandemic has effected operations at the company, he stated that, "We have adapted to are surroundings and worked right through the pandemic, we were involved in a large project at the royal London Hospital repairing and respraying panels on a new ICU ward, which was very rewarding as we felt like we were doing our bit to help out during the pandemic."



making it applicable for premises of all sizes. The company's team only use quality materials for longevity enabling them to provide up to 25 years warranty on all of RJ Spray's external products.

In regards to its internal decorating, RJ Spray is a nationwide commercial painting specialist, providing services from repainting internal walls and ceilings, to spraying old furniture or objects to rejuvenate their colour. RJ Spray provides a comprehensive range of solutions for commercial decorating and an equally as extensive a range of colour options.

RJ Spray offers its customers a range of services for transforming and enhancing their interior space. These services include wall and ceiling painting services, furniture repainting, door paint spraying, on-site spraying, external paint and protective coatings. Utilising its team who has gained extensive experience working with interior designers and other contractors,



Benefitting from its combined 60 years of experience, RJ Spray's team of experts provide a truly efficient, bespoke and comprehensive service. Providing advice, quality products, high standard workmanship and UK nationwide coverage, are just among some of the examples that set RJ Spray apart from its competitors.

As for the company's future, RJ Spray is determined to continue providing valuable services for its clients. John stated, "We plan to just keep moving forward, while producing good work."

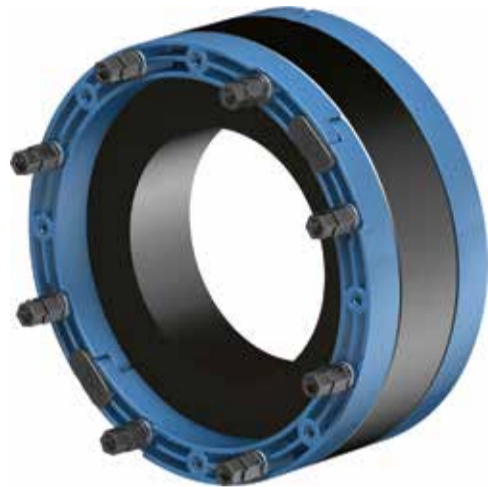
For any more information, please see the details below.

T 08000 24 24 82
www.rjspray.co.uk



Industry specialists in sealing solutions

Service Sealing Solutions Ltd is the sole UK distributor for the sealing industry's top manufacturers; DOYMA, FRANK and HKD. DOYMA granted Tina McAra the exclusive rights to distribute their products in the UK in August 2018, leading to the formation of Service Sealing Solutions Ltd.



"We are the UK distributor for a German manufacturer called DOYMA. We distribute their products throughout the UK." Added Tina.

Distributing the industry's best manufacturers, Service Sealing Solutions Ltd offers the UK the most extensive range of products, providing the best in German engineering to seal penetration points in walls and floors to permanently prevent any infiltration of gases and water into the building. DOYMA's products are designed to solve all watertight duct sealing requirements and prevent against structural damage.

Service Sealing Solutions Ltd supply the full range of DOYMA products, to suit all situations from power cables, communications cables, pipes and ducts and district heating pipes.

"I think what sets us apart is the German engineering and manufacturing, combined with a 25 year watertight guarantee. There is no one else that will provide a 25

year guarantee which is quality assured. Because they are German manufactured, I always like to compare them to Mercedes cars; they can be expensive but they are worth the investment - the quality and performance is so much better than any competitors." Mentioned Tina.

Service Sealing Solutions Ltd specialises in high-quality service duct sealing systems for utility services and watertight seals, offering the highest level of expertise to developers and specifiers for sealing against water and gas entering around service entries in basements and high-rise buildings.

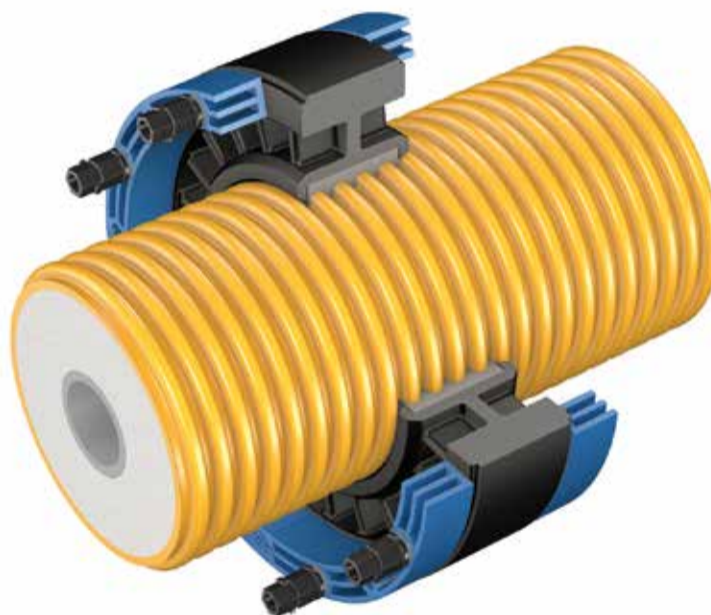
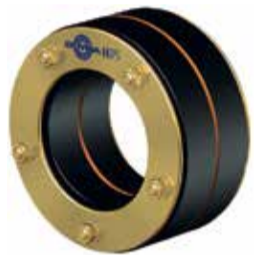
"We provide DOYMA's products mostly to builders of commercial properties and we have provided for many of the large projects in London including HS2 and Kings Cross. Quite often they install the services and electrics underground and therefore have to guarantee water tightness." Stated Tina.

DOYMA is at the forefront of innovation, developing practical solutions for sealing



and fire systems. The main ambition at the company is to create safe building penetrations for pipes and cables that seal off fire, gas and water. The company operates in three main competencies areas of civil engineering, building services technology and power supply, providing

With such a broad scope of innovative sealing solutions, the company has an ever growing market range consisting of various industry sectors. A notable customer and industry sector for the company is Vital Energi, a big customer for Service Sealing Solutions Ltd. Tina explained, "Vital Energi install district heating pipes, these are giant hot water pipes that run underneath towns and cities. These pipes can slide during operation, our gaskets are the only mechanism that can keep them watertight and sealed. This has opened up a new market and we are now selling to all the main district heating installers."



sealing systems for pipes and cables, single and multi-line house entries for supply and disposal lines, fire protection products for preventive structural fire protection and special designs and custom-made sealing systems.

DOYMA maintains a wealth of experience spanning over 50 years, utilising this experience and vast knowledge base the company ensures its seal range produces effective, simple solutions to meet all watertight service sealing requirements. This in turn, ensures that DOYMA's products provide the highest level of safety for sealing buildings where pipes and electrical cables pass through.

HKD which is now owned by DOYMA, manufactures a vast range of pipe sealing systems and service ducts with a guarantee that its products can withstand up to four bars of pressure. All of the HKD product range can be combined with the DOYMA's Curaflex range, one of the most popular DOYMA ranges.

In terms of new developments, DOYMA has recently released its new generation Curaflex Nova® gaskets - professional solutions for tradesman with uniquely safe installation. Providing tradesmen with professional gasket inserts, the new generation of Curaflex Nova® gasket inserts instantly solves sealing problems and is adaptable for multiple applications.

As the company looks toward the future, its main aim is to continue to grow and further its reach into new markets. "We've seen a steady turn over each year with no down turn, so mostly we will be continuing this success and looking at new markets such as the district heating market, which is a big and growing market for us."

For any more information, please see the details featured below.

Contact
T 01952 510050
www.servicesealingsolutions.co.uk



The best mud control product on the market



Here at Building and Construction Review, we are proud to announce Mudcontrol Ltd as the recipient of our Commitment to Outdoor Building Services Award.

Mudcontrol Ltd is dedicated to supplying top quality, ecologically-sound 100% recycled plastic products. Comprised of a small, dedicated team, Mudcontrol Ltd is based near Kettering, Northants and distributes from its central hub in Northampton to the whole of the UK, selling direct to customers.

Established in the UK in 2018, Mudcontrol Ltd also has a sister company based in Belgium, Mudcontrol BE, offering the same products and service. Mudcontrol Ltd provides recycled plastic products, including its revolutionary Mudcontrol slab and ecologically sound fencing products, to multiple individuals and industries across the UK.



With five-star reviews across the board, Mudcontrol Ltd is known for its top class products, excellent customer service and attention to detail, a fact its customers openly attest to.

As sole UK distributors for the Mudcontrol slabs, a national pallet delivery network is used to deliver anywhere within the UK, usually within a few working days. There is no minimum order, and pallets of up to 140 slabs can be delivered at any one time.

But what makes Mudcontrol slabs so good?

Mudcontrol slabs are a professional system for gateways, paddocks, pathways, parking areas, gardens, tracks, storage areas, driveways and commercial areas. Their unique patented design ensures they will give you a good solid footing through any weather. Mudcontrol slabs are a simple D.I.Y way to create instant, removable hard-standing areas for people, animals and



vehicles. They interlink with no moving parts, can be driven over by farm traffic, have been thoroughly certified to withhold over 60 tonne of weight, and are a proven solution for problem areas, providing the sub-base and base in one easy D.I.Y. step.

Furthermore, they come with a 20-year warranty, and are a solid investment as they are removable so they can be used again and again or can be left in one place indefinitely to form a permanent hard-standing area (which will allow grass to grow through if installed without a membrane).

Mudcontrol slabs have the added benefit of being ecologically sound and free-draining.

"Our products are made from sustainable recycled materials and will outlast alternatives by many years. We are a dedicated team and are able to deliver a fast and efficient service to all" stated James, UK Sales.

Anyone who has a mud problem of any size is catered for by Mudcontrol Ltd. Mudcontrol slabs have a plethora of benefits over concrete; previously concrete has often been the first option when it comes to surfacing a yard, drive or pathway. However, concrete production has a strong impact on the environment and can cause damage to the fertile layer of the earth, the topsoil, and because of its impermeable surface, there is no run-off point eventually causing more flooding problems, soil erosion and water pollution.



Mudcontrol slabs are a one-time purchase, can be laid and re-laid and can be taken with you wherever you go.

They adapt to all areas and surfaces, and because they are made from recycled household plastics made into a Playground Certified material, their unique construction means they stabilise and improve the ground beneath without causing any unwanted run off or exacerbating soil erosion.

They are easy to lay (with minimal or no ground preparation), weighing 7kg each (at 50cm square), very user friendly, and as they are a removable solution, planning permission may not be required, although Mudcontrol recommends checking with your local authority in any case.

Alongside slabs, Mudcontrol Ltd also provides fencing products which are available in many different sizes and lengths as round or square posts, rails, beams, sleepers, piles and sheets. Made from 100% recycled plastic HANIT® material, just like the slabs, they are 100% rot proof and unpalatable. They can be used just like a wooden product, be installed by hand or by machine, then stapled, drilled, and screwed or nailed into. They will never need treating and will never rot. Over 15 million of the posts have been sold worldwide. Just like the slabs, the fencing products are covered by a 20-year warranty.

The effects of COVID-19 have been minimal on the business, allowing it to keep growing during the pandemic. Mudcontrol Ltd manages contactless ordering and deliveries, keeping staff and clients safe and happy at all times. In the coming months, Mudcontrol Ltd will be adding to its product range as

expansion is on the horizon for all areas of the company, so the business can keep up with the huge demand from its customers.

Whether you are looking to cover an area big or small, stop that sinking feeling, and get in touch with Mudcontrol Ltd today.

For more information, please see below.

Kerry: 07941 961496
James: 07826 398096
Landline: 01536 669630
sales@mudcontrol.co.uk
www.mudcontrol.co.uk



New innovation to the TuffStuff® range; TuffStuff® flexible GRP



In this issue of Building and Construction Review, we are very proud to announce we have chosen to select Tuff Waterproofing Limited as the recipient of our Commitment to Excellence Award, for the company's ongoing dedication to continuously pushing the boundaries of flat roof waterproofing.



Tuff Waterproofing is a provider of waterproofing liquid solutions for flat roofs, which are comprised of GRP, flexible GRP and polyurethane. Using its advanced TuffStuff® formula range, which uses the latest liquid polyester resins, glass fibre mat reinforcement and flexible edge trims, it creates a fully integrated 100% waterproof seamless finish. The TuffStuff® product range is used for various applications and across multiple domestic and commercial environments.

With an impressive history which spans across 30 years experience, Tuff Waterproofing has invested heavily in research and development, company processes and its team to ensure that its TuffStuff® range of products, continue to exceed expectations and set new standards in flat roof waterproofing solutions. From the company's bespoke premises based in North Yorkshire, Tuff Waterproofing maintains its operations on a national scale, supplying its products through a dedicated Stockist network located throughout the UK.

The company has continuously accumulated growth year-on-year and established an enviable reputation, becoming a key figure in the GRP flat roof market and resulting in TuffStuff® becoming the UK's premium designer and supplier of heavy-duty GRP waterproof flat

roofing systems. Regarding its team, TuffStuff® maintains a dedicated product development team that work closely with its customers to produce a consistently, evolving product range that is suitable for multiple flat roof applications.

This commitment to continuous development is echoed throughout the company and its dedicated team of UK based product developers work with UK manufacturing facilities, with the ambition of pushing and setting new standards of GRP roofing systems, to new levels.

A vital part of the company's business is its exceptional technical support service and Tuff Waterproofing ensures it provides premium quality and agility, in responding to and



resolving customer queries professionally, efficiently and to the highest standards. The company prides itself on providing the highest standards of customer service and its main ambition is to instil confidence in its customers, that they feel fully supported.

In terms of the company's most recent developments, Tuff Waterproofing has further expanded its TuffStuff® product range and is now offering its latest GRP roofing innovation; TuffStuff® flexible GRP. TuffStuff® flexible GRP is a single resin solution that provides an exceptional combination of versatility and

Specifically designed for durability in mind, the TuffStuff® Flexible GRP is extremely robust with one coat needed for a 10 year system or two coats required for 20 year system, and is crack resistant with no risk of weak points. The 20 year system qualifies for a 20 year guarantee on materials.

As the company looks towards the future, Tuff Waterproofing foresees many challenges that they will have to overcome, but believes firmly that it has the right structure in place to provide the company with the perfect platform to be able to consistently respond and evolve its product range, while



providing outstanding support to its customers. For more information about the company or to view its range of products, please see the details below or alternatively, contact them directly on the number stated.

Contact
T 01977 680250
www.tuffstuff.co.uk

durability. It's extremely quick to lay and does not require stripping or re-decking of the roof, saving customers both time and money. It can be applied to a variety of surface types and structures including vertical sections, with no need for costly additives.

Requiring only two coats and 225gsm reinforcing mat, it can be applied within two hours. The TuffStuff® Flexible GRP forms a highly flexible, extra tough and seamless waterproof membrane, making it an ideal solution for areas of heavy-duty foot traffic.

The solution can be applied directly to felt, asphalt, single-ply, GRP, concrete, timber or metal. Its highly flexible, extra-tough and seamless waterproof membrane makes it reliable when added to vertical sections without the concern of sagging. Furthermore, the solution is a fast-curing system with walk on time of between 30-60 minutes. Once laid and whilst curing, the product is showerproof.



Bring your vision to life with Vision Development

Vision Development is a manufacturer of off-site timber frame systems. Vision Development was established in 2011 by Tim & Jane Karpinski who have been in construction for over 40 years. As manufacturers, the company maintains its own factory facility in Berkshire, meaning the quality control of workmanship and materials, is guaranteed.

"We are a timber frame construction company offering timber frame systems for new builds, extensions and commercial builds. Our services include, supply and installation of the timber frame structure, supply only so the client can arrange the installation or we offer design and build service, where we take care of the complete construction process from start to finish." Stated Lucy Karpinski, Administrative Manager.



Boasting unrivalled expertise, the company works closely with each client to provide a perfectly tailored quotation which is right first time. They ensure that their timber frame systems are designed to meet each individual project requirements.

With its own manufacturing facility, Vision Development is able to offer its customers visits to view their new home while it's in production. This further ensures that the customer's requirements are fully met and offers a high quality, reliable and personal service throughout.

"Each project we undertake is adapted to suit our customers U Values, budget and timescales. We provide a tailored fixed-price quotation rather than a



budget estimate, which other timber frame suppliers offer, that can be misleading." Lucy continued, "We do not only offer timber frame packages solely, but also full construction services where we can look after the groundworks, electrics, plumbing, carpentry, roofing and windows and doors. Everything you would expect in a turnkey solution (not including kitchens, as we like to leave this to the customer and their personal preferences)."

One of its most notable services is Vision Development's popular bungalow conversion service. After the reform of the planning laws in 2020, bungalows can now be extended upwards using a fast-tracked planning process. This process allows self-builders to look at alternatives to building a new build home and instead, convert an existing bungalow. Vision Development's timber frame bungalow conversion systems consist of a lightweight



and convenient method for extending a bungalow upwards with an additional storey.

"We specialise in, and have completed many bungalow transformations, bringing a new lease of life to an existing bungalow with the addition of a new first floor timber frame structure. Creating additional space and value." Added Lucy. In regards to the company's latest developments, Vision Development has recently expanded its manufacturing space, accommodating

a larger factory facility to increase its timber frame manufacturing capacity. This in turn, has also enabled the company to hold more materials, providing a significant cost saving for its customers.

As the company looks ahead, Vision Development hopes to continue providing a personal service to its customers. As a family run company, the company will continue catering for the individual needs of each customer which cannot always be offered by other larger competitors.

Lucy continued, "We also plan to undertake more of our own developments, building new homes with unique characteristics that can't be found in large new build developments. Each detail is thought through by ourselves, choosing fixtures, fittings and finishes that are in keeping with the surroundings while also being attractive and functional."

For more information on the company or to view its services and latest projects, please see the details featured below.

T 0118 9712181
www.timber-frame-suppliers.co.uk



ROSSO MANIGLIE
 ELEGANZA CON STILE



FINE ITALIAN DESIGN

Rosso Maniglie is our exclusive range of Italian inspired designer levers. Produced using a zinc base material and manufactured to the highest standards, this range takes designer levers to the next level.

Created with a sleek and incomparable aesthetic appeal, our contemporary style Rosso Maniglie range has quickly become the first choice for home owners, architects and house builders throughout the UK.



RMSQ080CP
 Maia lever on square rose with

RMSG004CP
 Turn & release on square rose

T : +44 (0) 1228 672 900
 E : sales@zoo-hardware.co.uk
 W : www.rosso-maniglie.co.uk

For further information on this range visit our website or call one of our friendly sales team.

Rosso Maniglie is part of Zoo Hardware



Do your project justice

With Quality & Professional Promotional Content



- ▲ CONSTRUCTION TIMELAPSE
- ▲ COMPLETE OR STAGED PROJECT COVERAGE
- ▲ SPECIALLY TAILORED LINKEDIN PROMOTIONAL PACKAGES
- ▲ AERIAL FILM & PHOTOGRAPHY
- ▲ BROCHURE & GRAPHIC DESIGN (PRINT & DIGITAL)

THIS IS JUST THE BEGINNING OF WHAT WE CAN PROVIDE, IF YOU REQUIRE SOMETHING MORE BESPOKE PLEASE GET IN CONTACT AND WE CAN DISCUSS YOUR REQUIREMENTS IN MORE DETAIL.

CASE STUDY



CLIENT: Genius Facades Ltd
INDUSTRY: CONSTRUCTION - FACADE MANUFACTURER

PROJECT OUTLINE:

A regular and valued client Genius Facades wanted to promote factory expansion and recent investment in new machinery to new and existing clients.

To achieve this we visited the factory and filmed and photographed factory processes and the new machinery in action. This content was then used to produce a range of different videos and has also been used for brochures, advertisements, regular linkedIn updates and on the client website.

Contact
www.efendiarchitectural.com

Whether you want to promote a newly finished development, give further insight into your manufacturing process or follow a construction project from breaking ground to practical completion, Efendi Architectural are on hand to provide the highest standard in visual media to support your project.

We work closely with all our clients to ensure we provide exactly what's required to achieve the best results.

OUR SERVICES

- ▲ CONSTRUCTION FILM & PHOTOGRAPHY
- ▲ MANUFACTURING FILM & PHOTOGRAPHY

Easyflow



Easyflow offers you with a single point of contact and a turnkey solution for all your underfloor heating and liquid floor screed needs. From designing and installing your underfloor heating, to a full laser survey on site, to the supply and installation of your liquid floor screed.

Benefits of Underfloor Heating

- ▲ Up to 30% lower running costs than radiators
- ▲ Avoid overheating and energy waste - heats more efficiently using just 35-degree water
- ▲ Low carbon footprint
- ▲ Can be used in conjunction with any heat source
- ▲ Completely versatile, lay tiles, carpet, or wood
- ▲ Control remotely

Benefits of Liquid Floor Screed

- ▲ Reduced screed thickness
- ▲ Better heat conductivity
- ▲ Fast drying and thermally guaranteed options
- ▲ Can be force dried
- ▲ Greater compressive strength than traditional screeds
- ▲ Levels survey carried out for accuracy
- ▲ Environmentally friendly

UNDERFLOOR HEATING

We are dedicated to providing our clients with the very best in underfloor heating systems, together with customer

care above and beyond expectations. Our experienced consultants are dedicated to investing their time in planning and designing your underfloor heating system, ensuring that you are supplied with an underfloor system of the very highest standard. At Easyflow good advice and quality products go hand in hand.

LIQUID FLOOR SCREED

Anyhydrite flowing floor screeds are based on a synthetic anhydrite binder rather than OPC Cement giving them many unique benefits over cement screeds, the most obvious difference is their fluid application compared to semi dry cement screeds, but they also offer higher compressive and flexural strength, lower shrinkage, eliminate reinforcement, improve surface finish and greatly improved underfloor heating performance.

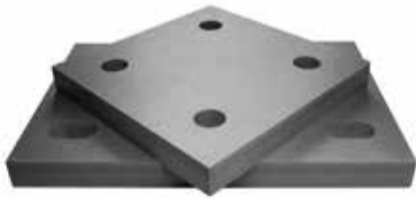
FASTER-DRYING SCREEDS

Easyflow can now supply a range of faster-drying products that can offer reduced drying times - 10 days for tiling and 28 days for wooden floors in non-heated floors, in heated floors 14 days for tiling and 21 days for wooden floors.

Contact
T 01743 298001
www.easyflow.org



Thermal isolation and anti-shock specialists



Established in 2006, Thermal Breaks Limited is based on a constant growing demand from specialised insulation products from its parent company AK Rubber & Industrial Supplies Ltd. Experts in thermal isolation and precision levelling solutions, Thermal Breaks Limited is committed to supplying high quality products manufactured from premium quality materials in a range of grades to suit customer needs.

Thermal breaks are used in steel-to-steel and steel-to-concrete applications. Each application helps to prevent thermal transfer from the exterior of structure, in to the internal structure via the steel framework. For steel-to-concrete, the thermal break greatly reduces heat loss into the concrete foundation or slab and provides better insulation for the structure.

Thermal Breaks Limited have partnered with Trimble Solutions UK to produce a comprehensive and innovative software Tekla Plug-in component for Tekla Structures. Tekla Structures is an

advanced BIM application that includes valuable construction information, such as component properties specifications, and essential manufacturer references.

The Plug-in tool allows Tekla Structures' users to ensure the correct design and detailed information is applied throughout the project, from conceptual planning to fabrication and construction.

Thermal Breaks Limited also provide numerous other applications. TekTherm™ is a high-performance insulator used between internal and external connections to prevent thermal bridging. TekVibe™ (coming soon) is made from materials with low natural frequency, making an ideal product for shock absorption and vibration isolation. TekPack™ are high quality shims, designed to flex and absorb shock when required. TekSlide™ are low friction slide bearings that allow for movement caused by a temperature change.

Acoustic Attenuation is a high quality and high-performance noise reduction and thermal insulation range. Lastly, its Load Bearing Rubber are fibre reinforced load bearing pads manufactured using recycled high-quality tyres resulting in an economical friendly product.

For more information, see below.
T 0800 6444949
info@thermal-breaks.co.uk
www.thermal-breaks.co.uk

Lendon always on hand to help with all your marine shipping container needs

Lendon Containers is based in the Clapham Common area of London, the company was founded over 20 years ago by the company's namesake Lendon Meaby. Lendon Containers sell and rent marine shipping containers and has built a strong reputation for its containers and boasts an impressive portfolio of satisfied customers throughout a variety of different sectors including: The Army, Local Authorities, Leisure Facilities, Construction, Parks and Garden Centres, Hospitals, Static Storage Centres, Schools, and Utility Companies.

Shipping containers are an extremely cost-effective and flexible storage solution as they are easily transported, opposed to other storage facilities such as warehouse storage.

The company's containers are not solely hired or purchased for their storage capabilities and have been converted by many clients for a whole host of different applications and purposes, including generator units, laboratories, clubhouses, secure site offices, chemical stores, pop-up bars and food stalls.

In terms of the range, Lendon Containers provides containers for hire and for purchase. The containers are extremely competitively priced and can be rented from as little as £9 a week, plus VAT. Containers available for rent are either 20ft or 40ft x 8ft x 8ft 6ins or 20ft ISO containers. Hiring a 20ft container offers nearly 14 square metres – 32 cubic metres – of space.



Maintaining an experienced team, Lendon Containers can help customers with the entire conversion process; from the design of the container right the way through to fitting it out and transporting it to the customer's location. Regardless how big or small the project is, the team at Lendon Containers is always on hand and will guide its customers through every step of the way. There are many examples of previous conversions available for customers, with sample materials and styles available.

A great solution for cost-effective, simple and transportable storage or a unique conversion facility – Lendon Containers provides a plethora of options for customers.

Contact
T +44 (0)20 7350 1940
info@lendoncontainers.co.uk
www.lendoncontainers.co.uk

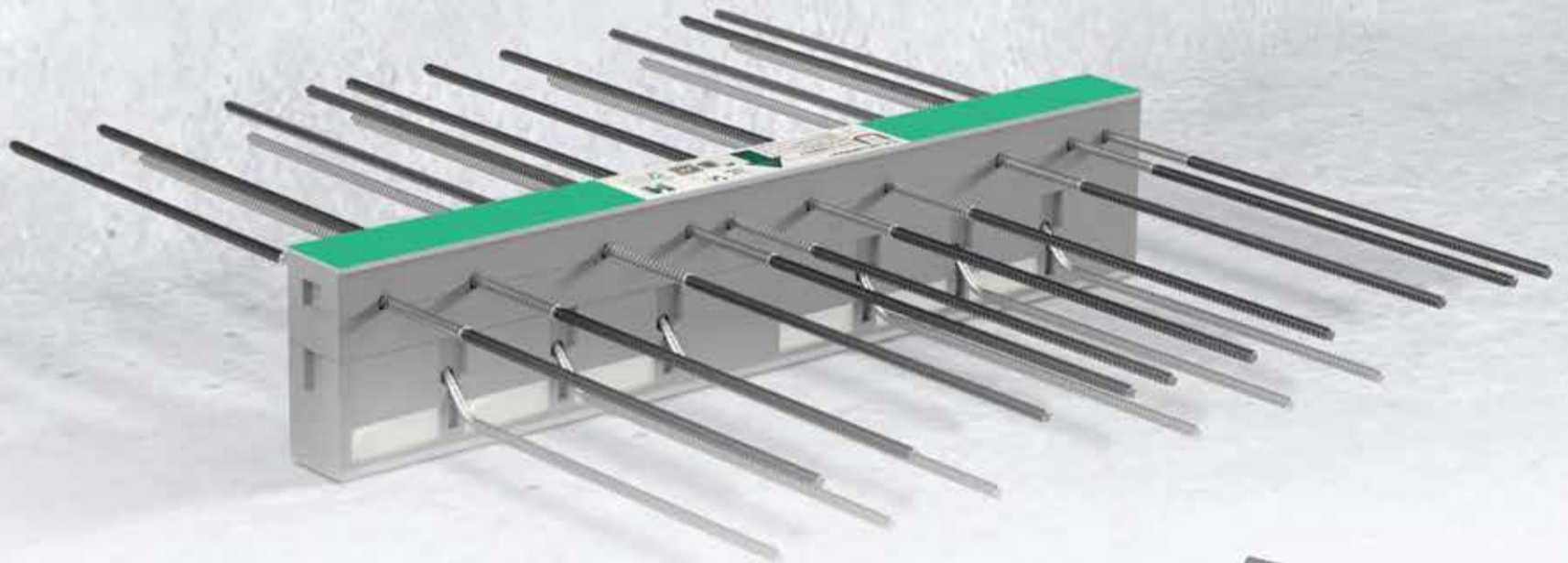
ISOPRO® ISOMAXX®

INSULATED BALCONY SUPPORT SYSTEMS

Trust in the best thermal insulation - with our proven ISOPRO® and ISOMAXX® concrete balcony connection systems.

- European Technical Assessment ETA-17/0466
- Environmental contribution detailed in DGNB Environmental Product Certification and LEED product declaration
- Cost-effective, high-performance components provide up to 120 minutes fire protection
- Simple installation with no need to tape joints
- The insulation layer does not absorb water and so maintains its thermal effectiveness
- Very low deflection at the insulated structural joint
- Comprehensive engineering support from the J&P team

Need a high-quality and cost-efficient insulation system for your current project?
Contact us today to learn more, or visit us at www.jp-uk.com



J&P Building Systems Limited
Thame Forty, Jane Morbey Road,
Thame, Oxfordshire OX9 3RR

01844 215 200
www.jp-uk.com
enquiries@jp-uk.com

J&P Building Systems Ltd. is a subsidiary of:

■ H-BAU Technik GmbH ■ JORDAHL GmbH



Sustainable wood flooring and cladding



for Hawwoods. "Sustainability is increasingly vital to us," Paul Moody says. "Today our clients are looking for more and more healthy materials in their specifications, with clear accreditations. At Hawwoods we are continuously taking new steps to improve our actions in this area, and we do our utmost to ensure that our timber is ethically and sustainably sourced by working only with reputable timber companies. We require an independent certification to verify our timber sources, and

this certification is available to our clients on request. Many of our products are certified by key international forestry accreditations."



Introducing HavSeal™

In line with the company's approach to sustainability Hawwoods has recently introduced their own seal of approval called HavSeal™. This ensures that further measures are continuously taken to support sustainability, and the care of the regional ecology is considered by the responsible timber sources. HavSeal is awarded only to products that exceed the already high standards needed to ensure entry into the Hawwoods portfolio.

Hawwoods' Head of Global Product Compliance, Darren Mayes, says: "As

regulation and market demands grow for more eco-friendly products we wanted to add our own stamp of approval to products deriving from well-managed sources, considering sustainability, ecology, production and waste. HavSeal not only enhances the profile of each product but also provides a higher-level platform for manufacturers to attain."



Darren Mayes continues: "With the HavSeal criteria products are awarded points according

to environmental accreditation, the health of the material, the production process and the material's waste generation. Products that achieve five points are endorsed with Green Seal of approval, and those attaining six or more points will achieve a Gold Seal."

Building upon its decades of success, Hawwoods is continuing to ensure it stays up to date with customers' ever-changing needs.

Through developing its digital tools, accreditation as well as expertise around care, maintenance and installation, Hawwoods ensures it remains versatile and adaptable enough to stay abreast of customers' challenges.

Contact us or visit our showrooms.

T 01524 737000
info@havwoods.com
www.havwoods.com/uk



Since being established as a timber merchant in 1975 by the Whiley family, Hawwoods has become renowned in the UK and worldwide as a leader in the wood flooring market, both technologically and aesthetically.

With headquarters in Carnforth, Lancashire, Hawwoods also has showrooms in London and Manchester, as well as business operations in Australia and a further three showrooms in Sydney, Melbourne, and Newcastle. The company also has a growing business in North America with a showroom in New York, plus its first entrance into the Canadian market with a showroom in Toronto. To further its global reach, Hawwoods also works with numerous partners across the world including India, UAE, Portugal, New Zealand and beyond.

"We provide global solutions for the wood flooring and wood cladding market," explains Paul Moody, Global Marketing and Digital Director. "We offer an end-to-end design and product consultation service to ensure we supply the best possible product to meet the customer's needs, whether that's residential end users, the architecture & design industry, or tradesmen and contractors."

Sustainability in the heart

Sustainability and acquiring materials from sustainably responsible sources are extremely important aspects of the business

STYLISH EXTERIORS THAT STAND THE TEST OF TIME

- Textured effect render
- Bespoke colour matching
- Exemplary thermal credentials
- Vibrant and contemporary external wall finishes

Soltherm offer many possibilities with different types of insulated render that stand up to the elements. Using our own colour match and texturing facilities there is a wide choice available. Exemplary thermal credentials with a sleek aesthetic appeal.

Keeping fire at bay

A product range to suit all social housing requirements
The safest EWI systems that make a difference.

SOLTHERM 75 - Innovative and Approved

- Approved for over 75 years by Ofgem
- Innovative ECO solution for EPC 'D' rated properties
- Capability to generate higher ECO funding rates
- A2 fire rated and approved unrestricted in height
- Industry leading weather resistant technology
- Superior wind load resistance, prevents delamination and shear deformation

SOLTHERM FSC - Innovative Fire Safe Technology

- Impact resistance
- Low water absorption
- Render adhesion strength
- Thermal properties
- Economic & fire safe alternative to mineral wool
- Utilises a new advanced insulation, ensuring it is the safest and most economical solution.

* All product ranges tested and proven and are ECO eligible

SOLTHERM ULTIMATE A1

- Fully certified A1 fire rated EWI system
- Non combustible mineral wool based system
- Designed to ensure optimal vapour permeability and resistance to precipitation
- Highly resistant to day to day damage
- Ability to perform against a high degree of movement, thermal expansion and contraction.

SOLTHERM ULTIMATE HD

- Indestructible system
- Both ETA and BBA approved
- Proven to have at least 30 year effective life
- A2-s1, a0 fire rating - approved for use above 18m
- Fixed through scrim demonstrating industry leading wind load resistance.
- Unique reinforcement provides unrivalled impact resistance.

Soltherm External Insulations Ltd
www.ewi-soltherm.com 01908 533 444 office@soltherm.co.uk

Soltherm

Soltherm are producers of the highest quality EWI system in the world and leading provider of thermal insulation systems. We have been manufacturing



products in house on the most advanced production line in Europe for more than 25 years. We have become one of the leading companies in the building chemistry market and a leading provider of thermal insulation systems. We specialise in the production of façade systems, by offering a high level of technical support and practical expertise including funding at an affordable price. We employ and continuously improves the latest organisational techniques and environmentally-friendly technologies.

We are engineering led with a R&D department unique to the EWI industry. With an ongoing commitment to innovation and improvement we have produced a fully certified A1 fire rated system using fire safe technology and have a 75 year approved system along with offering a range of other systems with features such as 130J impact resistance to exceptional wash off resistance, all with a 25-year warranty.

Approved by NSAI, BBA, ETA, DiBT, BDA, our specially developed adhesives, paint and renders are used to finish 4.5 million square metres of EWI facades annually. Moreover, we are ISO14001/2014 and ISO9001/2014 accredited.

Soltherm is the Past, Present and the Future of Innovation.

Contact
<http://soltherm.eu/en>

BlueRinse Nappy Sack

When managing concrete wash out, there is still a common misconception that it is the solid by-product which is the primary hazard. It is important to emphasise that, it is in fact the waste water which has the potential to do most damage.

This wash water can have a pH of up to 12, which in turn can cause catastrophic environmental problems, as well as health and safety issues for anyone coming into contact with it.

When looking at how your project will deal with concrete wash out, REMEMBER, it is the water

which is the hazard.

Here at Mudtech Tank Division, we've made it our mission to make concrete washout much easier. Our Nappy Sack Frame is designed to accommodate the revolutionary BlueRinse Nappy Sack, a self dosing bag which separates the solids, automatically reducing the pH of the water.

Engineered with an oil adsorbent liner, which filters down to 20 microns, the fabric is impregnated with Mudtech pH Blue, which is released into the water as it passes through the wall. The collected water will typically have a pH

below 9. No hazardous water is generated as pH is reduced at the washdown stage. Simple and easy to use, the Nappy Sack Frame is CE marked, and robustly constructed to cope with the demands of any construction site.

The reputation of BlueRinse products continues to grow and, following its use by McLaughlin & Harvey on their King George V Dock project in London, Nappy Sack has been published as 'best practice' by the Considerate Constructors Scheme.

Nappy Sack can be found alongside our other products at www.bluerinse.co.uk.



Robust UK



Robust UK's GLAS-DOR product continues to prove its versatility within the glazed door market, offering combined fire and security resistance in both internal and external settings.

Made-to-measure at their Staffordshire based factory, GLAS-DOR is certified to PAS 24: 2016 and approved by Secured by Design (SBD), the national Police crime prevention initiative. It's also available with up to 2 hours fire-resistance (EI) to EN 1634-1 and offers up to 45dB acoustic reduction.

The GLAS-DOR system is type-approved for fire-resistance in combination with burglary resistance, e.g. EI 60 & PAS 24. The type-approval certificates mean that "labelled" sections can be used to comply with specific requirements for fire and burglary resistance with a transparent solution in stairwells for example.

Ideal for use in offices, shopping centres, airports, hotels, hospitals and similar public buildings; GLAS-DOR is available in several configurations, including glazed doors, sliding doors, partition walls and window sections. Door and wall sections make up the fire cell partitions in corridors, main passageways and stairwells used as evacuation routes in the event of a fire.

Robust UK are the leading supplier of steel door solutions. Their extensive range of steel doors cover the Industrial, Commercial and Residential sectors and are ideally used within the Transport, Education, Health, Housing, Industrials and Utilities markets.

You can find more information on their website: www.robust-uk.com.

EnviroPipe
LOGSTOR
SUPPLY AND INSTALLERS

EnviroPipe Limited is a London-based company that is solely focussed on the supply and installation of above & below ground pipe systems covering a wide variety of applications & sectors.

Although we do install many different types of pipe systems, district heating networks are our specialism.

We have installed countless buried pre-insulated pipe systems and our reputation for quality has led us to forging links with some of Europe's leading manufacturers and suppliers of pipe systems.

Our pipe system installation services include:

- ▶ Water Supply Pipe Systems
- ▶ Pre-Insulated District Heating Network Installation
- ▶ Plant Rooms and Energy Centre Pipework
- ▶ Welded Gas Pipe System Installation
- ▶ Internal Risers and Distribution Pipework
- ▶ Installation Services for Other Pipe Systems
- ▶ UKAS WELDERS available - tested with procedure to BS 17024

EnviroPipe T: +44(0)20 8847 5290 E: info@enviropipe.co.uk
M: +44(0)7894 324 739 www.enviropipe.co.uk

We've just made concrete washout even easier...

The Nappy Sack Frame is designed to accommodate the revolutionary BlueRinse Nappy Sack, a self dosing bag which separates the solids, dramatically reducing the pH of the water.

Published as 'Best Practice'
CONSIDERATE CONSTRUCTORS

The NappySack Frame

- No hazardous water is generated; pH is reduced at the washdown stage.
- Easy to use. Simply place Nappy Sack inside frame and wash chute into it
- Allows treated water to flow from top valve to foul sewer/discharge point
- Each sack will typically safely handle 50+ chute washes
- CE marked and robustly constructed

BlueRinse NappySack®
www.bluerinse.co.uk

BCR10

GLAS-DOR

Robust by name. Robust by nature.

For more information please call, email or visit our website:
01782 592900 sales@robust-uk.com www.robust-uk.com

ROBUST Steel Door Solutions

- FIRE RESISTANT**
Up to 120 mins
EN 1634-1 up to EI 120
- ACOUSTIC REDUCTION**
Up to 55dB
- BALLISTIC RESISTANT**
BS EN 1522
FB3NS to FB7NS
- INTRUDER RESISTANT**
BS EN 1627
RC2 to RC5
& PAS 24

MADE IN BRITAIN
Secured by Design
SBD
Official Police Security Initiative

50 Year old product makes dramatic comeback to help beat the virus!

The current necessity for virus protection is why the Melaphone® Speech Unit is enjoying renewed success. Its unique design eliminates the muffled sound of speech through a screen. Completely air-sealed, certified to ISO 14644-1 Class 5.

Class 5, it is specified by architects and designers for hospitals, laboratories and cleanrooms. This simple but ingenious invention requires no servicing, no electricity and is very easy to keep clean.

The Melaphone® is built into our Defender Virus Screens which the company has supplied to hundreds of UK doctors' surgeries, medical centres, and pharmacies.

Screens are made to the highest quality, providing hygienic, sleek and permanent protection in any environment.

As a stand-alone unit the Melaphone® can be easily retro-fitted. It is available from

stock in the original brushed aluminium, in stainless steel, in white powder-coated aluminium and now in Himacs acrylic-resin – our most popular model.

All 'MADE IN THE UK' - by us in London and used in the Astra-Zeneca factory as seen on BBC.

Contact
T +44 (0)13 5923 3191
info@melaphone.co.uk





Engineering Innovation

Bringing fresh thinking to subsidence repairs



"Shire's methods saved Insurers £10m over 3 years alone"

Frank Russell, Operations & Development Manager for Lloyds Banking Group

Our Services

- Ground Investigations
- Structural Inspections
- Defect Investigations
- Expert Witness Reports
- Design & Contract Administration
- Historic Buildings
- CDM & Statutory Applications

Our Repair Methods

- Piling
- Building Jacking
- Structural Repairs
- Slab Lifting
- Ground Improvement
- Root Barriers
- Foundation Systems

 @shire_uk 01527 579933
 engineers@shire-uk.com www.shire-uk.com







The only joinery manufacturer you need



If you're looking for quality, custom-made joinery, look no further than Bluerun Ltd. As a small, family-owned joinery manufacturer, Bluerun boasts an extremely loyal team of experts who manufacture everything to the highest quality.

Bluerun's staircases are widely considered works of art, all of which are designed in-house. On top of this, Bluerun can create bespoke items, from bookcases and window frames to countertops and door sets.

Whether you need a one-off item or a production run of doors and windows for a housing development, a new interior for your premises or a bespoke shop front, Bluerun is perfectly placed to deliver exactly what you need.

Instead of producing speculative items for stock, Bluerun only produces purpose made joinery to fit clients' drawings and specifications.

The majority of Bluerun's production is for commercial builders and manufacturing, and it can provide all types of commercial joinery products. In addition to commercial projects, Bluerun can also produce high quality joinery to meet the specific standards of conservation areas or heritage sites.

This includes shopfronts in sensitive conservation areas, and a 10-metre-high oak hardwood catapult for Stansted Mountfitchet Castle.

With such a wide scope of services and the skills and expertise to support them, Bluerun is the only quality joinery manufacturer you need for your project.

For any more information, please see the details below.

T 01799 599995
dee@bluerunltd.co.uk
www.facebook.com/bluerunltd
www.instagram.com/bluerun_joinery
www.linkedin.com/company/bluerun-ltd

Bluerun Ltd quality bespoke joinery since 1991

Passion and creativity that makes wood work

Matthew Smith of Dragonfly woodwork specialises in designing and hand making furniture. He produces timeless pieces with exceptional craftsmanship and fierce attention to detail, bringing extraordinary beauty into your home.

Matthew works closely with his clients incorporating their ideas, combined with his own artistic vision to create unique furniture which stimulates the senses of both look and feel.

Using timber, with the occasional collaboration of glass and steel, he uses his array of skills working with the very straight and perfect lines, to the more unusual and natural flow of the timber.

Commenting on his work Matthew has said, "Working on furniture for me is a spiritual practice. I use my senses to achieve balance and beauty in my pieces, to inspire each and every customer that I work with and to ultimately bring enjoyment that will last for generations. I can make anything

out of wood! I love it when a customer phones me up and asks me if I am able to make something, without hesitation the answer is always a resounding 'Yes'."

For any further information, please see the details below.

T 07479 252888
info@dragonflywoodwork.uk
www.dragonflywoodwork.uk



Solution Fires - Excellence in Electric



Solution Fires is a new generation of highly efficient, authentic and stylish electric fires. The focus of your living space, these fires have been designed and manufactured with optimal controllability of heat, light and sound as the critical elements.

Controllable from your handset, via Alexa or through the app on your smart phone or watch, you can customise your fireplace to suit your individual taste. No electric fire, currently on the market, has the level of product features or attention to detail that solution fires have as standard, supported by a high level of genuine customer service.

Top reasons to choose a Solution luxury fire

- ▲ Ultra realistic, contoured flame effect technology
- ▲ 'One box solution' for front, corner or panoramic views
- ▲ Six preset illumination settings & one custom setting
- ▲ Nine independent flame colours with adjustable brightness*
- ▲ Nine independent fuel bed colours with adjustable brightness*
- ▲ Nine independent downlight colours with pulse effect*
- ▲ High quality, hand decorated ceramic log fuel bed
- ▲ Crackling fire audio with volume control
- ▲ Customisable fuel bed set-up
- ▲ Fade in - ON, Fade out - OFF, flame effect feature
- ▲ Supplied with remote control as standard
- ▲ App control for most smart phones, tablets & watches
- ▲ Alexa voice control
- ▲ Optional Scene lighting LED kit available
- ▲ Optional Anti Reflective Glass available
- ▲ Thermostatically controlled with ultra-quiet fan heater
- ▲ Seven day, twice daily, program settings
- ▲ Fully ErP Compliant & low energy LED flame effect
- ▲ Plugs into a standard 13-amp 3 pin socket
- ▲ Optional 5 year warranty for added peace of mind

*The above applies to the SLE75, 100, 150 & 200 fires *With use of Solution App

For more information about our products, please visit: www.solutionfires.co.uk



LUXURY MEDIA WALL ELECTRIC FIRES



BUILT IN FIRES ● STOVE ● TUNNEL ● INSET ● SUITES

INFO@SOLUTIONFIRES.CO.UK

01462 813138

[f](#) @SOLUTIONFIRES [@](#)



EXCELLENCE IN ELECTRIC

WWW.SOLUTIONFIRES.CO.UK

Unbeatable Varnish for a Range of Uses

We are pleased to announce that Le Tonkinois Varnish have been specially selected for our Building and Construction Review Recommendation profile.

Le Tonkinois Varnish is a specially designed varnish that was first formulated back in China almost three centuries ago. The natural oil based yacht varnish comes with a range of excellent benefits, including being permanent, removing brush marks, not cracking or flaking off. On top of that, the varnish boasts exceptional corrosion protection for metals and has a durable coat too, meaning it can withstand impact without peeling or cracking.

The highly raved about varnish can be seen on yachts and boats,

whether in fresh water, sea water, or sludge up and down the country. Not only that, but you can also use Le Tonkinois Varnish in kitchens, outdoor and interior woodwork. As a result of being fully waterproof and non-microporous, the varnish is resistant to boiling water, alcohol and has even been classified as safe to use in food areas.

Le Tonkinois Varnish can also be used to stain wood, and pigments can be mixed in with the varnish if a particular colour is desired, whilst still allowing the wood to breathe, a feature not typically found among other varnishes. The varnish is also naturally glossy and can be made matt or satin with an additional coating of Gelomat.

If you would like to find out how you can get your hands on some of the remarkable Le Tonkinois Varnish, or would like to find out how you can use it for your own needs, then be sure to get in contact using the number below.

Alternatively, more information can be found by checking out the website.

T 01628 629892
www.letonkinoisvarnish.co.uk



Specialist in large section timber, irregular sizes and long lengths. Sections 600 x 600 and lengths to 15m

Planed, treated timber, railway sleepers, tile battens, arris rail, feather edge boards, telegraph poles, glulam and more

WARDELL

LONG LENGTHS

Tel: 01469 532922

info@longlengths.com www.longlengths.com

TimbaBuild

A family-run Cornish business based in Newham & The Port of Truro, Cornwall.

TimbaBuild, which specialises in everything timber-related from timber framed houses, garden features, Furniture and decking, provides full design, planning and construction of a client's project, creating a strong relationship with customers to create the best finished product for them.

Paul Harvey, owner and director of TimbaBuild, said: "We operate an open door policy, where we invite the client in to view their project during manufacture, we listen, advise and discuss every part of the project.

Priding themselves on a dedicated customer service, TimbaBuild's team keep clients up to date with every element of their build thanks to a dedicated online portal, which includes invoices and quotations, as well as a finance tracker, enabling them to see where their money is being spent.

Paul said: "A daily diary is also kept, so that the client knows what has been accomplished per day, every day. In many instances, we offer a time lapse camera service, and present it to the client at the end of the project, completely free of charge."

Paul added that this combination of great customer service and quality finished products, has resulted in the continued client list returning time and time again.

Contact
Info@timbabuildstructures.co.uk
www.timbabuildstructures.co.uk



Heat Pumps: A 'no-brainer' for self and custom build homes.

If you're building a new home or creating your dream barn conversion, there's not usually much excitement surrounding choosing the heating system. They just don't get homeowners blood pumping in quite the same way as a new kitchen, that glass balustrade or the latest Farrow & Ball colour chart!

But with an impending ban on gas boilers from 2025 to help reach the Government's target of net-zero emissions, coupled with the real possibility that all homes who have a gas boiler could face a dreaded 'carbon tax' at some in the future; a financial penalty that aims to bring under control the fact that 14% of UK greenhouse gases come from our homes, then installing a heat pump now really is the common-sense option.

For those involved in self or custom builds installing a ground, air, or water sourced heat pump will not only provide for 100% of the heating and hot water needs but will future proof your new home from fossil fuel price rises or penalties. In addition, the current financial incentive from the government in the form of RHI Scheme means that most, if not all, of the cost of installing is paid back to you over 7 years.

And for some homes on new plots, the savings based on not having a gas connection brought to site can run into the thousands!

If you're doing a new build (or a significant renovation), it's the perfect time to install these systems as you don't

have the added hassle, or cost, of re-designing the radiators or underfloor heating system, because you're installing from scratch anyway.

IMS Heat Pumps clients have been future proofing their homes for over 20 years. We work with you, your architect or main contractor to specify the right system for your home. For custom builds and renovations, right now heat pumps really are a no-brainer!

IMS Heat Pumps Limited

T 0114 327 100 / 01738 827 244
contact@imsheatpumps.co.uk
www.imsheatpumps.co.uk



CONTAINEX: Mobile space solutions for your construction site facility

When it comes to the construction industry, mobile space systems are indispensable as construction offices, sanitary facilities, workshops and accommodation. One of the "major players" in the European market is the Austrian container manufacturer CONTAINEX.



Quality meets experience

CONTAINEX produces its mobile space systems in 6 of its own European production plants - and has been doing so for more than 40 years. Around a third of the annual production of 80,000 containers is supplied to the construction industry. In addition, CONTAINEX maintains a large container rental fleet of more than 120,000 units, together with numerous trading partners.

CONTAINEX GREEN technology

CONTAINEX has always relied on energy-efficient designs, the use of recyclable materials and environmentally-friendly production processes. The space modules are therefore manufactured according to the strict internal environmental and quality standard CONTAINEX GREEN technology.

All-rounder for every need

Individual, flexible and versatile: The portable cabins and sanitary cabins of the CONTAINEX CLASSIC Line are our all-rounders for every purpose. Thanks to the proven modular design and a large number of equipment options, the flexible modules become individual space systems that are specifically adapted to your needs.

Whether as construction offices, sanitary facilities and common rooms, workshops or accommodation: You determine the required floor space and equipment, we deliver the right solution.

Space for your stored goods

The versatile configurable storage containers are particularly suitable as mobile warehouses on site and are available in different sizes from 6' to 20'. Especially for material containers on construction sites, CONTAINEX has developed a security package that massively counteracts the high burglary risk.

Thanks to the high-quality CDC primer and enamelled powder coating, CONTAINEX containers are not only extremely durable, but also available in a variety of RAL colours.



Service with a capital S

Customer and service orientation are the focus at Austrian family-owned company CONTAINEX. That is why CONTAINEX experts advise our customers and European trading partners in their respective native language. A logistics department of our very own and more than 250 depots throughout Europe also ensure short delivery times and prompt delivery directly to your premises.

Contact
www.containex.co.uk



JIM WILMER & SONS ROTTNE UK DISTRIBUTOR





POWER 50

GOOD OPERATOR ENVIRONMENT & COMFORT IN FOCUS

SERVICE-FRIENDLINESS GIVES EASY ACCESS

VERY GOOD OVERALL ECONOMY

T 01465 811600
sales@jimwilmer.co.uk | www.jimwilmer.co.uk



BRUTALLY EFFECTIVE

Tel: 01202 517799
www.klouuk.com
 made in the UK





Post Drivers • Stump Grinders • Flail Heads
Planers • Log Grabs • Cone Splitters

Robust and Efficient Hydraulic Attachments

UNBEATABLE QUALITY • EXCEPTIONAL SERVICE



Rotators | Weigh Links | Log Grabs | Tree Shears | Flails

We supply some of the largest forestry dealers, OEM's and maintenance firms in the UK and our products are considered to be some of the best in the world.




SUPPLYING THE FORESTRY & TIMBER TRADE

sales@approvedhydraulics.co.uk
0161 480 0869
approvedhydraulics.co.uk

Why Harvest Rainwater & What You Can Do with it

With the increasing unpredictability of the British weather, there hasn't ever been a better time to harvest rainwater for use around your home and garden.

Water harvesting systems come in all different shapes and sizes, so depending on the size of your home and room you have available, you can choose a system that suits you. Keep in mind: the more water you collect, the more water you're able to save. You can also decide between above and below ground rainwater storage.

Harvesting rainwater can have some huge benefits for both you and the environment.

- ▲ Eco-Friendly
- ▲ Save Money
- ▲ Store Water for Summer

- ▲ Reduce Mains Pressure
- ▲ Help Reduce Flooding & Erosion
- ▲ You're Covered in Emergencies
- ▲ It's Free & Simple
- ▲ Flushing Toilets
- ▲ Washing Clothes
- ▲ Watering Your Plants
- ▲ Washing Your Car
- ▲ Cleaning
- ▲ Composting
- ▲ Pets & Animals
- ▲ Refill Ponds & Bird Baths

Are you ready to harvest rainwater now? Find your solution at Rainwater Solutions today.

www.rainwatersolutions.co.uk



A developer's first steps in to Passive Haus, path finding into a helpful community...



First steps

The Passive Haus Institute had a huge influence on developing the company's vision and to show the institute the company's support is one of the Pure Haus goals. The principles to work to were very consistent with the company's ethos for sustainability, quality, health and comfort. Taking pride in your home and local community was at the heart of our long term vision; Building Stylish and Sustainable Communities.

Values Driven

After committing to the goal of reducing the carbon footprint of the built environment the affect was so substantial Pure Haus found themselves promoting Passive Haus to anyone who would listen to them, there was a new buzz within the company. The first challenge was naming the company.... Pure Haus emerged the winner. Implying a German inspired house builder with a goal of making the world a cleaner, healthier place. The second goal was to identify the people who can help remove assumptions from the equations and replace them with facts.

Working with like minded people

Aligning with like minded people, who demonstrate this enthusiasm by going above and beyond our expectations, is the driver of this business. Our Builders have taken time to travel and see other sites under construction to learn a new skills, to say they are excited about timber framed housing and its potential would be an understatement.

Working to this standard is an opportunity that's rare; for them to be given a chance to do something worthwhile, get paid, and leave a legacy appealed to them!

Future challenges

Having secured relationships with financiers and landowners the biggest challenge moving forward is to have the operations of the company scaled up to match the ambition of the company.

www.purehaus.co.uk

RAINWATER HARVESTING

Rainwater harvesting is a smart way to reduce your water bill as it can be used for a number of purposes.

Find your solution at Rainwater Solutions today.
Call 01462 429 758 or visit www.rainwatersolutions.co.uk

Harvesting rainwater can have some huge benefits for both you and the environment.

- ▲ Eco-Friendly
- ▲ Save Money
- ▲ Store Water for Summer
- ▲ Reduce Mains Pressure
- ▲ Help Reduce Flooding & Erosion
- ▲ You're Covered in Emergencies
- ▲ It's Free & Simple



architectyourhome

if you want the **perfect** finish for your **home renovation** project, you need the **perfect** start

call us for a chat to **find** out how you can get the very **best** in home design.



0800 051 5304 or visit www.architect-yourhome.com

Glampubs

Glampubs provide high-quality log fired hot tubs which are designed specifically for the demanding glamping and leisure business. Our years of experience using these tubs on our own glamping site gave us a unique insight into what makes a great product.

Our tubs are robustly constructed with high-quality LDPE liners and heat-treated thermowood outers for a traditional appearance. Your visitors will benefit from a deep fill and simple, rapid heating from traditional logs. As an operator/ owner you will appreciate the reliability and low maintenance from the product. Both internal and external heating options are available.

Aidan Reeve, Glampubs Technical Manager says "We tried

several different tubs when we started our site, Tinywood Homes ten years ago. We found that these tubs were great for the customer and great for us; they are a breeze to clean and turnaround and give excellent service with no downtime"

Sales Manager Adrian Beaumont adds; "Our mission is to provide the sector with what we believe are the highest quality and best value product available on the market today. We understand that getting the right hot tub will not only draw customers to you, but will also extend your season and generate higher revenue"

Contact
www.glampubs.com



All Weather Access



Trackway popularity has rocketed in the last few years, with companies and businesses alike seeking ground protection, and temporary access. The protective flooring really is essential for a number of reasons, such as ensuring projects don't get delayed due to bad weather or being able to create a temporary route for heavy plant and machinery to successfully move around the site.

Due to our extensive range of trackway products, we have been given the fortune on working on many large-scale jobs including a project for a large construction company, on a site in South West London.

The project required us to use two different forms of trackway, resulting in 245 heavy-duty panels, Tufftrak, and 177 medium duty panels, Euromats, being used. Our team delivered and installed the products over the course of 2.5 days, before any contractor was on site, as this allowed our client to then take the delivery of the initial site facilities.

The work carried out at this site is a great highlight of how our expert team can supply and install large quantities of trackway efficiently, and to the customers standards. It also highlights the diversity our trackway panels have, as we were able to provide access for heavy duty plant and lorries, while only using two different products.

T 01371 700 510
info@all-weatheraccess.co.uk
www.all-weatheraccess.co.uk



Hot Tubs for the Glamping Industry

GLAMP TUBS

- Super hygienic LDPE interior lining for quick handovers.
- Durable and classic Thermowood exterior complements the glamping setting.
- Choice of internal or external wood fired heaters.
- Two sizes available 4 / 8 person.

Snowford Hill, Southam CV47 9QE
01926 504067
sales@glampubs.com





Customisable timber buildings for the perfect outdoor space

Get the home office, studio or summer house of your dreams with a timber frame system that can be customised to your space.

Entice new and old customers with stunning Glamping cabin designs by JK Designer Builds. The patented system is used to create visually exciting and affordable sturdy timber framed buildings on site from standard materials. An added advantage: our buildings qualify under the Caravan acts, avoiding complicated planning issues.

Our single storey designs are built without concrete foundations as the light weight of the building requires only our simple ground support system. Eliminating concrete is both environmentally and budget friendly. Our ground support system copes with sloping sites as the frame can be supported by varying lengths of rot-proof recycled plastic wood.

Choose the building size and shape to fit your site and your target market. The system is completely flexible in both size (1.2 square metres to 60 square metres) and shape ranging from squares and oblongs to pentagons and polygons.




info@jointkit.co.uk

www.jointkit.co.uk

Pro-Domes

Pro-Domes was created in 2021, with the aim of providing the highest quality Geodesic Domes to the Glamping world. Having vast experience in the Glamping sector, we know exactly what it takes to give Glampers that something extra special.

We offer high spec geodesic domes, delivered to your door, anywhere in the world. We allow complete customisation of our structures. You choose the size, colour, insulation, doors, heating, flooring and

much more. We have made a user-friendly configurator that allows you to visualise your dome, so you are entirely satisfied with how it looks, before purchasing.

Whether it is a single dome for personal use, or for your own Glamping resort, here at Pro-Domes, we want to work together to help turn your dream into a reality.

T 07827614404 / 07581 216244
info@pro-domes.com
www.pro-domes.com



Get ready for the Great British Summer with Waterscapes

From business parks and public spaces to residential developments and roof gardens, Waterscapes Limited is a leading water feature and irrigation specialist company that for over 30 years, has been producing and installing projects for corporate, municipal and private clients across the UK and Ireland.

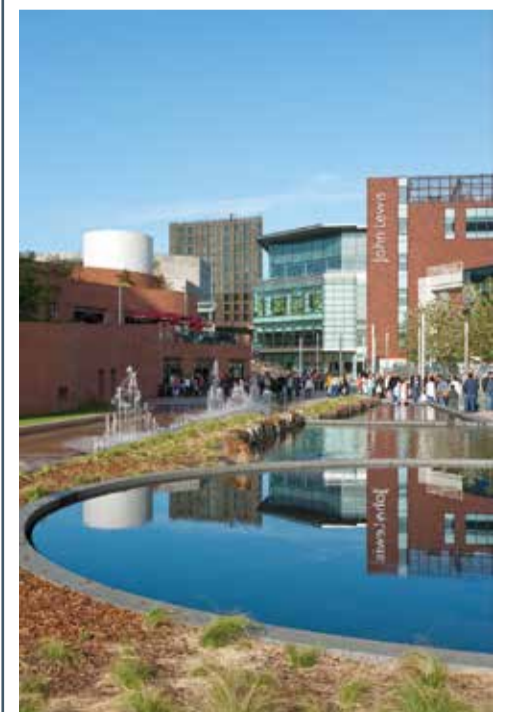
If you're looking for water feature and irrigation for commercial construction, large residential developments and business parks, Waterscapes is the perfect company to provide these services. The company can offer a complete package, from design through to maintenance or any component within.

With a diverse customer base from a variety of disciplines, Waterscapes prides itself on the quality of its workmanship and equipment used to provide a high level of service, that is personal to each client. From pumps to filters, sprinklers to fountain nozzles; each product is selected for its high specification and suitability for use, offered with extensive manufacturer's warranties.

Waterscapes provide endless creative vision and attention to detail, so there is no better time to take advantage of the company's progressive thinking.

For more information, please see the details below.

T 01963 824166
www.waterscapeslimited.com
 Twitter / Insta: @waterscapesltd



Reworkshop
Off Grid & Camping

Composting and off grid toilets, shower rooms, and many other unique products, designed for camping, glamping and off grid locations. Specialists in remote installations.

Handmade in Wales with a huge emphasis on recycled and sustainable materials.

www.reworkshopwales.co.uk
reworkshopwales@gmail.com
Tel: 07714 719441

brightideas
consulting & development

Consultancy for Housing Developments

www.brightideasdevelopment.co.uk

GRANITE
Building Warranties

Specialist Brokers of New Build, Self-Build & Retrospective Warranties. Site Insurance & Building Control.

With over 25 years experience in the industry, we can assist with securing the best cover for your project.

We take all the hassle out of the process.
 Please call one of our experts:

Ed, Kelly or Rob
 Tel: 01284 365345
 Ed Mobile: 07968 119620
 Kelly Mobile: 07706 410804
 Rob Mobile: 07811 340411

Building Warranties & Latent Defects Insurance
 Independent Brokers

Ed@granitebw.co.uk
kelly@granitebw.co.uk
rob@granitebw.co.uk
www.granitebw.co.uk

Burnside Plant Hire Ltd

Our Director Ian Orr started Burnside Plant Hire as an owner operator, with a 20-ton excavator and a 25-foot container in his garden. Ian has 25 years' experience in a excavator on civil engineering / groundworks. During this time he installed a few sheet piled walls for his customers.

While on a job for a local civil engineering / house builder he was asked again to install a sheet piled wall. Having seen just how good it was, the company then handed him several other sheet piled wall contracts and so Burnside Plant Hire / Piling contractors was made. Our

first employee William McDougall started as a pile hand.

Our reputation as piling contractors grew quickly and we became busier and busier. Which lead us to purchase our first state of the art side grip Movax piling hammer.

Our customer satisfaction has always been the priority to us as this is what Burnside was built on, therefore as we grew training and health, and safety has come first. Each new operative and pile hand has been trained by Ian Orr and William McDougall personally to comply with

this policy and maintain and grow our business.

We recently had the opportunity to take over the mini piling foundation team from a local piling company that finished trading. This has enhanced our company's skill set to include 20 years' experience in mini and foundation piling.

We now have 4 excavators and 4 Movax side



grips with 15 employees providing sheet piling solutions and mini piling throughout the UK.

shirley@burnsideplant.co.uk
www.burnsideplant.co.uk

Getting more from mini-diggers



Excavator Forklift, a family-run business based in Northern Ireland, has developed, CE marked and is now manufacturing a new range of lifting attachments that transform mini-diggers into maxi-lifters.

Primarily designed with landscape gardeners, groundworks contractors and builders in mind, the attachment can be used by anyone who needs to lift heavy loads like pallets of blocks, bags of sand or aggregate or indeed other heavy loads. The attachments are made to fit popular mini-diggers from 0.8-3.5 which can access side-returns to gardens that are inaccessible by larger equipment. This makes the EFL attachment and digger combination a compelling alternative for limited access sites.

Attached and detached in a minute, the clever design (owner and designer James is a Chartered Civil Engineer and Member of the Institute of Engineers of Ireland) takes the hydraulic power of the excavator that is normally directed to digging and harnesses it - within the attachment structure - to produce a vertical lift.

The vertical nature of the lift means that the overturning tendency (which otherwise limits mini-diggers lifting capacity) is significantly reduced. The wheel support on the attachment and the self-righting nature of the attachment mast ensure stability, even on uneven ground. In terms of stresses on the digger, note that when the attachment is lifting, the forces exerted on the digger itself are much less than those generated when digging. The digger provides ballast, hydraulic power to the attachment rams and it is needed to steer and propel the combined load.

The attachment can lift loads on pallets (to 20 cm or c.2 m) or (perhaps of most interest to arborists) suspend them (at 2m).

The precise weight that can be lifted depends on the excavator model, but most mini-diggers (+EFL attachment) can be expected to lift up to 3-4 times what the excavator can lift alone. To give context, a 1.1 tonne Bobcat E10 + attachment can lift an impressive 1.0 tonnes to 1.6 m!

Category winners in the Catalyst Invent 2021 competition awarding innovation in Northern Ireland.

www.excavatorforklift.com

Designed by James Russell (M.I.E.I.)



BURNSIDE PLANT HIRE LTD

SHEET PILING - FOUNDATION PILING -
MINI PILING - NATIONWIDE SERVICE

Sheet Pile Installation
Cofferdamn Installation
King Post Installation
Mini Piling Installation
Tube Installation
Permenant and Temporary Design Works

0141 374 2895 • 07787 575418 • 0141 647 9331
Email: shirley@burnsideplant.co.uk
Web: www.burnsideplant.co.uk
Glasgow

WWW.EXCAVATORFORKLIFT.COM

EXCAVATOR FORKLIFT EFL

Patent Pending

MAKING MINI-DIGGERS
MAXI-LIFTERS

CATALYST "INVENT"
COMPETITION 2021
CATEGORY WINNERS

New distributorship for Cinderella Eco Solution

LeeSan has become the Sole distributor for Cinderella Eco Solution incinerating toilets. 4 different toilets will be available very soon running on Propane Gas or 240V.

Cinderella Motion represents an entirely new concept for waste handling in Off-the-Grid locations, Marine craft, mobile homes and recreational vehicles. It is now possible to get rid of toilet waste in a hygienic and simple manner. The end product is just clean ash. The toilet may be used around 70 times before emptying is required. Cinderella Motion is a further development of the

popular Cinderella incineration toilet currently installed by over 60,000 users worldwide.

An incineration toilet is a toilet in which waste products, urine and excrement, are incinerated at a high temperature, leaving only an insignificant amount of ash.

Available around the world for decades, incineration toilets are a commonly used alternative in mountain cabins, remote areas, tiny homes, off-grid structures and other residential and commercial applications without easy access

to public utilities.

Since incineration toilets do not require the installation of a water supply or costly septic systems, and do not demand ongoing and messy work to process waste, their slightly higher unit price is heavily offset by lower maintenance over time, providing a substantially lower total cost of ownership than other solutions, both in terms of money and headache.

T +44 (0)1295 770000
www.leesan.com



Only LeeSan truly specialise in toilets

Incineration toilet adapted for when nature calls

T: 01295 770000

Leading services in the water industry

HD Services Ltd was first established in 1984 by current company Director, Frank Harris. Based in Buckinghamshire, the company operate throughout the South East and specialise in the design, supply, installation and maintenance of sewage treatment systems, open-loop ground source heat pump systems, water supply boreholes, soakaways and drainage – all the utilities a self-builder may require.



Customer service is at the forefront of the company which is why they provide on-hand advice and support on dealing with the Environment Agency, applying for the domestic Renewable Heat Incentive, and in regards to the several different services they provide. HD Services have been recognised for their exceptional products and services, receiving regional awards at the South East Green Deal and ECO Awards 2015, the Energy Efficiency and Retrofit Awards in 2016, the Energy Efficiency and Health Homes Awards 2017, the Energy Efficiency Awards 2018 and the Pioneer Award at the 2020 Renewable Energy Awards, run by the REA.



HD Services have this year won additional awards at the 2020/21 Energy Efficiency Awards. The awards they won included RH Installer of the Year for the East of England and Small Scale Project of the Year for the East of England.

Having won awards for their renewable heat installations, we asked Rebecca Taylor, Business Development Manager, what the benefits were. "We strongly believe that the open-loop ground source heat pump systems we design and install are not only the most efficient way to heat your home in our operational area, but also do less damage to the aquifers than drilling for closed-loop borehole systems, as predominantly these use the rotary drilling method. We aim to provide the highest quality open-loop ground source heat pump service available in South East England."

T +44 (0)1494 792000
enquiries@thehdgroup.co.uk
www.hdservicesltd.co.uk



COVID-19 SAFE WORKING

With over 30 years experience, we offer bespoke solutions for the domestic market across the South East. Feasibility can usually be determined upon receipt of a site postcode.

<p style="font-weight: bold;">WATER SUPPLY & SOAKAWAY BOREHOLES DRAINAGE SOLUTIONS WATER TREATMENT</p> <p>Independent water supplies can be used for irrigation or consumption*.</p> <p>Soakaways, drainage fields and other drainage solutions.</p> <p><small>*subject to analysis and suitable filtration / treatment</small></p>	<p style="font-weight: bold;">RENEWABLE HEATING</p> <p>Reduce heating bills by up to 50%.</p> <p>Groundwater can be used as a heat source for an Open-Loop Ground Source Heat Pump which could meet all hot water and heating requirements.</p>	<p style="font-weight: bold;">SEWAGE TREATMENT SYSTEMS</p> <p>Our bespoke systems are designed to meet the needs of individual clients and comply with strict discharge legislation.</p> <p>Servicing contracts are offered for all our installations.</p>
---	---	--

enquiries@thehdgroup.co.uk | 01494 792000 | www.hdservicesltd.co.uk

DIRECT HOIST

SUPPLIER OF GEDA HOISTS TO CONSTRUCTION AND INDUSTRY

**GEDA 300 Z & Z/ZP
(RACK & PINION)**

Z - PAYLOAD 300KG GOODS
ZP - PAYLOAD 300KG GOODS/3 PEOPLE
MAX HEIGHT 50M
SALE ✓ HIRE ✓



GEDA STAR 200 STANDARD

PAYLOAD 200KG
MAX HEIGHT 25/50M
SALE ✓ HIRE ✓



GEDA INCLINED TILE HOIST

PAYLOAD 250KG
MAX HEIGHT 19M
SALE ✓ HIRE ✓



GEDA MULTI-LIFT P6

PAYLOAD 650KG GOODS/6 PEOPLE
MAX HEIGHT 100M
SALE ✓ HIRE ✓



GEDA MULTI-LIFT P22

PAYLOAD 2000KG GOODS/22 PEOPLE
MAX HEIGHT 200M
SALE ✓ HIRE ✓



**GEDA 500 Z
(RACK & PINION)**

PAYLOAD 500KG
MAX HEIGHT 100M
SALE ✓ HIRE ✓



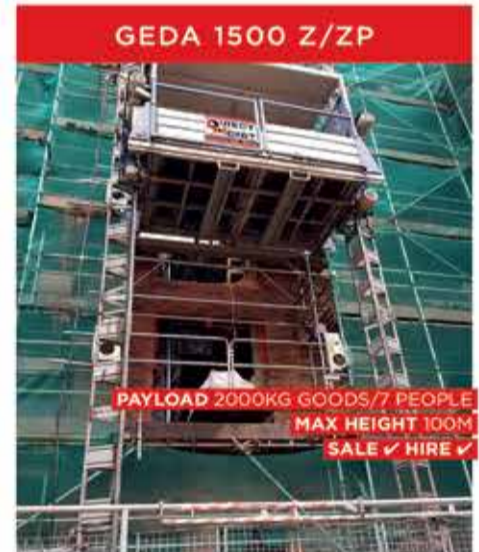
GEDA MULTI-LIFT P18

PAYLOAD 2000KG GOODS/20 PEOPLE
MAX HEIGHT 100M
SALE ✓ HIRE ✓



GEDA 1500 Z/ZP

PAYLOAD 2000KG GOODS/7 PEOPLE
MAX HEIGHT 100M
SALE ✓ HIRE ✓



**GEDA MAXI 150
SCAFFOLD HOIST**

PAYLOAD 150KG
MAX HEIGHT 40/70M
SALE ✓ HIRE ✓



GEDA 1200 Z/ZP

PAYLOAD 1500KG GOODS/7 PEOPLE
MAX HEIGHT 150M
SALE ✓ HIRE ✓



**GEDA 500 Z/ZP
(RACK & PINION)**

Z - PAYLOAD 500KG GOODS
ZP - PAYLOAD 850KG GOODS/5 PEOPLE
MAX HEIGHT 100M
SALE ✓ HIRE ✓



**GEDA 200 Z
(RACK & PINION)**

PAYLOAD 200KG
MAX HEIGHT 35M
SALE ✓ HIRE ✓



▲ HIRE ▲ SALES ▲ SERVICING ▲ PARTS ▲ REPAIRS

01724 781647 ▲ 0113 819 9997 ▲ 0191 260 0543 ▲ 0207 199 8278

DIRECTHOIST.CO.UK