

Best Practice



Issue 656 | Aug/Sept 2021 | 0121 725 1587 | www.bestpracticeuk.co.uk

Boost process efficiency and production output with automation



When David Rybacki founded DRG Manufacturing in the Chicago suburb of Lake Zurich in 2015, he started off with nothing except a commitment to manufacture total solutions for his customers. Since he was not basing his production process on existing equipment, he set out to incorporate automated systems and processes that would provide him with the highest levels of productivity.

DRG serves the firearms component industry, and the shop's commitment to quality has yielded dramatic results. In three years, it has grown from six to 40 employees and has increased its business eightfold.

"Business has been very good to us," Rybacki said. His commitment to making parts that exceed expectations has much to do with that success. DRG creates parts to three specific, equally stringent sets of specifications: their own internal specs, MIL-SPEC prints that constitute industry standards, and custom OEM prints supplied by individual customers.

The company approaches every new product and component build as an opportunity to produce it with the most effective process possible. One of the keys to that productivity has been DRG's fully automated gundrilling and reaming cell from UNISIG.

Before Rybacki invested in this cell, he evaluated several other gundrilling machines. "Most were limited to manually operated equipment that would not accomplish Rybacki's objectives. Only UNISIG offered a robotically run cell that could provide the functionality and flexibility DRG required," said a company spokesperson.

"Many companies in our industry put an operator in front of every machine," Rybacki explained. "Instead, our UNISIG automated cell gives us about a 150% production increase over such manual operations."

DRG's automated cell runs barrel blanks with chamfers at each end. A robot picks up a blank from an infeed system and loads it into a dual-spindle UNISIG UNE12-2 gundrill machine with a 12mm maximum part diameter capability. After the drilling process is completed, the robot moves the blank to a dual-spindle UNISIG UNR20 reamer.

Once the automatic reamer completes its part of the process, the robot moves the blank to a blow-off station to clear oil from inside the barrel. From there, the robot transports the blank to the outfeed station, where it exits the cell to be rifled. All aspects of the cell are automated, including the vision system with automatic compensation that allows the shop to quality check every part before human hands ever touch them.

DRG's completed automated gun drilling process simplifies

completion of large orders with long delivery schedules. Most of the shop's workflow involves long-term contracts and multi-month purchase orders for 1,000 or more barrel blanks. That workflow makes production planning easy because the company can establish shipping dates and work backward to create the build schedule. To meet their commitments, DRG normally runs three shifts—two attended by an operator and one unattended at night. Including the UNISIG cell, DRG has a total of five automated cells within the factory that operate a full 24 hours of every day.

When DRG receives a purchase order, it processes half the part total up front so larger volumes can enable them to amortise set-up costs over longer runs. In addition, DRG's Kanban inventory system enables the shop to maintain a replenishable inventory of high-demand parts for same-day shipping. Because the shop must be highly responsive to changing customer demands, inventory makes it possible to source smaller orders that DRG otherwise would refuse.



At DRG Manufacturing, a dual-spindle UNISIG UNE12-2 gundrilling machine, with 12mm maximum part diameter, drills barrels for the shop's automated operations

Originally, DRG outsourced profiling and barrel manufacturing work. But large orders and stringent specifications called for specialised equipment. For this reason, DRG acquired its UNISIG drilling and reaming cell in 2017 to produce raw rifled blanks. Although DRG has the option of running the UNISIG R-2A rifling machine as part of its automated drilling and reaming cell, that is one process Rybacki prefers to keep manual. "We run rifling manually so we can QC it and make certain that all aspects are perfect," he said. "DRG's QC department air gauges everything the company makes, although the cost of the QC equipment is steep: about \$12,000 per caliber."



"UNISIG offered a robotically run cell that could provide the functionality and flexibility DRG required, and the cell resulted in about a 150% production increase over manual operations," said a company spokesperson

Among the other attributes that set DRG Manufacturing apart from its competitors is its commitment to automated equipment. Rybacki realises that some companies may shy away from implementing automated cells because of the upfront time involved in development and set-up.

"It is about being patient to achieve the results you want," Rybacki said. "We can buy machines from UNISIG, put them on our floor and run them manually – or we can wait about six months longer and buy a fully automated turn-key system that runs perfectly." He noted that the extra time investment enables DRG to double its production without adding personnel or shift hours.

When it comes to workpieces, DRG works with some challenging materials and tight part tolerances. It manufactures most of its parts from 416R pre-hardened chromium stainless steel and 4150 Chrome-Moly Vanadium, or CMV. On a 17" rifle blank, for instance, total indicator runout is kept to under 10 thousandths, with diameters at under one thousandth and size within a couple of 10 thousandths.

UNISIG's application support plays a key role in DRG achieving its quality targets with tough part materials. As Rybacki pointed out, "They are experts in deep hole drilling, and they taught us everything we needed to know. The learning curve was just a matter of mastering tool life, which they gave us suggestions on. After receiving guidelines on how to start we just took it from there. It is not trial and error because of UNISIG's expertise. It is only trial and error if you do not listen to them."

For the immediate future, further expansion at DRG will have to wait. Although DRG has not reached volume capacity, its growth and success has led to no available shop floor space. Automation has enabled DRG to increase its process efficiency and boost production output.

But Rybacki is quick to point out that robotics only work in a shop with the right people to operate them. "You still need people," he noted. "People can grow into new opportunities. Robots do not take over completely."

UNISIG is also exhibiting at the EMO show in Milan, Italy from 4-9 October 2021. Further information on all machines of the UNI, UNR and R-2A series and the complete UNISIG machine program is available at: www.unisig.com or follow the company on LinkedIn and Twitter (@UNISIG).



UNISIG

UNISIG TAKES MOLDMAKERS FURTHER

Increase your mold manufacturing versatility using the power of gun-drilling with the leaders in deep hole drilling, UNISIG. Offering complete solutions for everything from simple to complex mold components, UNISIG machines help moldmakers improve efficiency, throughput and precision with outstanding part-processing versatility at an exceptional value.

TAKE YOUR MOLDBAKING OPERATIONS
FURTHER WITH UNISIG TODAY.

Find out more at www.UNISIG.com



Best Practice

Issue 656 | Aug/Sept 2021 | 0121 725 1587 | www.bestpracticeuk.co.uk



Reduce risk of lightning hazards at work with a lightning warning system

Lightning strikes the ground in the UK around 300,000 times a year, putting at risk those who are often outdoors in exposed, unsheltered locations.



digital map of the local area whilst displaying the urgent lightning alarm levels. The Lightning Works software will then alert the staff and managers to these threats in real time, allowing them to review and manage the situation and to staff to the potential danger. It can also activate warning sounders automatically if required.

Biral's BTD-200 lightning warning system is self-contained and can be used as a stand-alone system or connected into a plants' warning system so that employers can take precautions to mitigate the risks associated with lightning and ensure their workers' and process safety.

For the best chance of getting a thunderstorm warning, the detector should be able to alert for both distant lightning and the presence of a strong electric field at the installation location. This strong electric field is indicative of a lightning threat developing overhead - so potentially a very serious situation and one to take immediate action over.

The innovative BTD-200 lightning warning system can do both. It detects distant lightning up to 22 miles away as well as warning about a developing strong electric field overhead, even if there is no lightning being produced. The system comprises of a lightning detector which is placed outside, whilst a PC located indoors runs the supplied Lightning Works software. Users view the lightning in real-time on a

The newly released Lightning Works Messenger software system works seamlessly with the BTD-200 and automatically sends out both email and SMS text messages to any number of recipients. In this way, responsible staff, site managers as well as operators can be directly alerted to the risk of a developing or approaching thunderstorm. Again, strengthening site safety protocols and improving efficiency by reducing the time required to alert key staff.

The BTD-200 lightning warning system represents the next generation of lightning detection and warning system. It has been developed from proven professional technology currently used worldwide at airports and by national meteorological organisations.

For more information call Biral on +44 (0)1275 847 787, email info@lightningearlywarning.com, or visit our dedicated website www.lightningearlywarning.com

Livv Housing Group helps fire service prepare for major incidents in high-rise buildings

Knowsley-based Livv Housing Group is working with Merseyside Fire & Rescue Service to help crews improve their emergency response to dealing with high-rise incidents.

A major training exercise involving the simulation of a fire recently took place at Livv's unoccupied Gaywood Green tower block, in Kirkby.



Gaywood Green is thought to be the only empty high-rise building in the country being used by a fire service to undertake live practice scenarios.

Eight fire engines, two support vehicles and an aerial platform ladder vehicle rushed to the scene. Around 80 emergency service staff took part with actors posing as residents.

The exercise gave new firefighters the opportunity to experience a realistic fire and evacuation scenario.

Learning outcomes will be shared locally and nationally to improve safety and hopefully reduce the possibility of future high-rise fires.

Tony Cahill, Executive Director at Livv Housing Group, said:

"The safety and protection of our residents is of the upmost importance to us and we are proud to be working in partnership with Merseyside Fire & Rescue Service

to help them prepare for high rise emergency incidents.

"As far as we are aware, Gaywood Green is the only empty high rise building in the country that is being used for exercises like this, and MFRS will be able to share learnings with other fire services around the country."

Dave Watson, Group Manager at Merseyside Fire & Rescue Service, added:

"We work closely with housing providers and local authorities to ensure the safety of those living within high rise buildings and exercises like this are vital - we would like to thank Livv and the local community for giving us the opportunity to carry out a large exercise in a realistic setting."

For more information about Livv, visit <https://livvhousinggroup.com/> or contact 0151 290 7000.

Download on the App Store



Polar Thermal Packaging Ltd see them on page..... 5



TEC-RFID see them on page..... 7



Quality Handling Equipment for Industrial and Cleanroom Areas
Designed For You



EQUIPMENT RANGE:

- Vacuum Tube Lifters
- Automatic Sack Opening Systems
- Mobile Lifting Trolleys
- Post Hoists
- Drum Tipplers
- Customised Solutions
- ATEX Solutions
- PalCare After Sales Service and Spare Parts Team

Exhibition & Conference



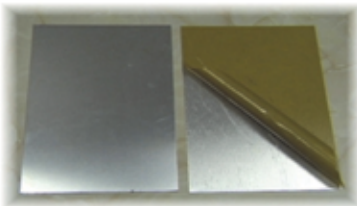
STAND E22

28-30 September 2021
NEC, BIRMINGHAM

sales@palamatic.com www.palamatic.com

Noise Controlling Metals Manufacturing Quiet


“sds – performs like metal, sounds like rubber...”



OEM design retro-fit noise control kits materials components

Conventional metals are efficient loudspeakers, radiating noise. sds manufactures highly damped quiet metals that don't radiate noise. Simply swap your noisy metal for quiet metal and reap the rewards. galvanised, stainless, aluminium, combinations...

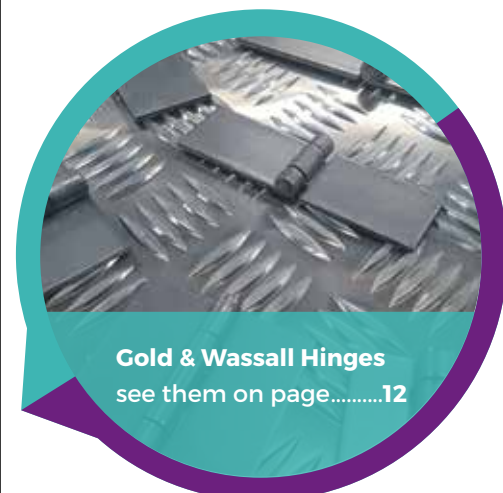
Effective, rugged, hygienic and low cost
Noise + vibration control made simple



sound damped steel

+44 191 2590700
sales@sounddampedsteel.com
Les Thompson
+44 7513 908060

www.sounddampedsteel.com/



Gold & Wassall Hinges see them on page.....12



Sound Damped Steel see them on page.....17

Big benefits from small parts picking in pallet racking

The use of pallet racking for small parts storage turns this ubiquitous storage product into a flexible order picking solution.

While constant innovation generates a stream of new intralogistics solutions, 'classic' pallet racking remains the most commonly used storage system. Its relatively low investment costs and flexibility - whether through changing rack configuration, retrofitting special purpose modules or adding extra bays - have made it an indispensable framework for storage and order picking systems.

Of course, many operations use pallet racking as the basis for straightforward

storage and retrieval of full pallets, either to fulfil customer orders or as a bulk store for replenishment. But the trend toward shorter product life cycles is increasing SKU numbers. The drive to minimise stock levels for each SKU and improve picking process efficiency to speed up order fulfilment, combined with demands for Just-in-Time delivery and online retail, is generating a greater need for small parts storage.

ADAPTABILITY & EFFICIENCY

This is where the adaptability of pallet racking comes to the fore because small parts picking can be easily integrated within pallet racks. One option is to create small parts pick locations on the reachable ground level, with upper storage levels serving as a buffer store for replenishment. Small parts storage containers will help to store and organise small goods and C-parts - making them available for quick and easy picking.

This will result in a reasonably efficient picking process but ground floor locations within

a pallet rack will, of course, be limited. Solutions are therefore required to maximise the available space to create a pick face with sufficient locations for the required SKUs, and enough stock to ensure availability during picks.

FLOW SHELVES FOR FIFO

Flow shelves can be easily installed into pallet racking to increase the number of pick locations and volume of SKUs located on the ground level pick face.

Goods are easily accessible from the front of the racking - the rollers on the flow shelves allow bins and containers containing small items to be picked roll smoothly to the front of the shelf - which makes picking easy. A full container of parts will roll to the operator each time the empty one at the front removed.

SHELVING

Standard shelving is another option to create flexible small item pick faces within pallet racking. There are several solutions: the first incorporates static shelving at right angles to the racking, with space in between each run to facilitate picking. An alternative option is pull-out mobile shelving that maximises the available space under the racking - though movement of shelving has a negative impact on pick time. A third solution involves static shelving parallel to racking, which makes front items easy to pick. Shelving dividers can be fitted.

Inclined supply shelving within a pallet racking bay will make items clearly visible for picking. Cardboard cartons or plastic bins can be used, though the latter option enables preparation in advance at the goods-in area by filling the plastic bin with the items to be picked.

BINS COMPLETE THE SOLUTION

BITO's comprehensive range of plastic bins and containers includes different sizes, with all kinds of accessories, for use in shelving and in flow racks. Working as a one stop shop solution with BITO pallet racking, shelving and flow racks, they will keep goods protected throughout the intralogistics process and during transport to ensure the quality of products are delivered to the customer in prime condition.

T +44 (0)2476 38 8852
info.uk@bito.com
www.bitosystems.com



Make your warehouse work smarter

with an optimised solution from BITO



WE OFFER



YOU GET



BITO BECAUSE:

- ✓ You'll get the most out of your space
- ✓ You can visit our Experience Centre to see the products
- ✓ You can trial prototypes
- ✓ You can buy popular products from UK stock
- ✓ You're buying from the manufacturer

02476 388 8852
info.uk@bito.com
www.bitosystems.com



Reusable thermal packaging



quality of Polar Thermal's British workmanship.

All products have been deployed in the harshest and most testing environments and have proved themselves, whether it is in constant daily use in UK hospitals or in conflict-zones like Afghanistan, showcasing Polar Thermal's service is effective and durable.

Polar Thermal, has a vast range of transport solutions, for airfreight and road transport, supporting the cold chain for perishables, and pharmaceuticals markets.

Our customer feedback is excellent! All Polar

The range was developed, to reflect customer demand for a single use modular system, that provides excellent performance. Combining a plethora of technologies in three categories; Deep Frozen: -18°C to -14°C, Chilled: +2°C to +8°C and Ambient: +15°C to +25°C.

Available in three sizes, 1500 x 1200 x 1000 (1.5 m³ internal capacity), 800 x 1200 x 1000 (1 m³ internal capacity) and 400 x 1200 x 1000 (1/2 m³ internal capacity). The Polar Pod, complete with the appropriate coolant packs, will deliver fantastic results over 30, 48 and 72 hours.

"The Polar Dot-Box™ system is produced from EPP, which is 100% recyclable polypropylene material. When no longer serviceable, Polar will shred and recycle the system to produce a new one, explained Paul. The Polar Dot-Box™ is a lightweight thermal liner, that fits snugly into a standard Euro 44 Litre tote, reducing or eliminating the need for refrigeration in



Polar Thermal Packaging Ltd, was established in 2012, however the original Polar brand has been around for over 30 years. Polar's entry into the thermal control market, came following a request by the Ministry of Defence, to solve the problem of frozen food melting at the dockside.

CEO, Paul Harrison and the team, have designed various thermal systems for the National Blood Service, DHL, Excel Global Logistics, Marks and Spencer, Tesco's, Sainsbury's, Astra Zeneca, Pfizer along with many other clients.

Polar Thermal Packaging Ltd, manufacture a range of temperature control insulated systems.



These include transport packaging for blood products, food, vaccines, pharmaceuticals, fine chemicals, plus many other specialist applications.

Polar is the best performing British product in its field, all Polar Thermal products, are manufactured at its Wiltshire based factory and are used throughout the world.

What makes Polar Thermal Packaging Ltd products so special? In recent testing by NHS England, the company's products scored 100/100 while its closest competitor scored 72. This is because of the materials used and the

Thermal products are reusable, with every square meter of insulation, produced from over 600 plastic bottles, with multiple uses, which makes for a cost-effective solution, alongside being extremely environmentally friendly, stated Paul Harrison, Managing Director & Head of Design.

Polar Thermal Packaging Ltd has developed it's Polar-Pod™ system, in conjunction with Gist International, to safely ship perishable, chilled and frozen produce by road and air, providing a controlled environment in varying ambient temperatures.



Developed using NASA technology, Polartherm™ is made up of a reflective inner layer, with a hollow fibre insulation material, with a waterproof woven PVC outer, producing a unique product, that is both tough and lightweight, with excellent thermal control properties.

Another product development, which came from a public-sector requirement, was the Performance Roll Cage. The product is lightweight, sturdy, durable and was developed alongside a leading public-sector procurement organisation, to safely deliver frozen, chilled and perishable produce, over multiple drops.

Available with a two-year warranty, utilizing the appropriate cool packs, to deliver faultless results over 30, 48 and 72 hours.

For the immediate future, Polar Thermal Packaging Ltd, is constantly looking to improve and expand on its already successful product range, using its client's feedback, to innovative new product designs.

With a new website upgrade coming soon, Polar Thermal Packaging Ltd, has its sights set on big changes for the future.

Should you require any further information, regarding our products or services, Please contact Polar Thermal Packaging Ltd.

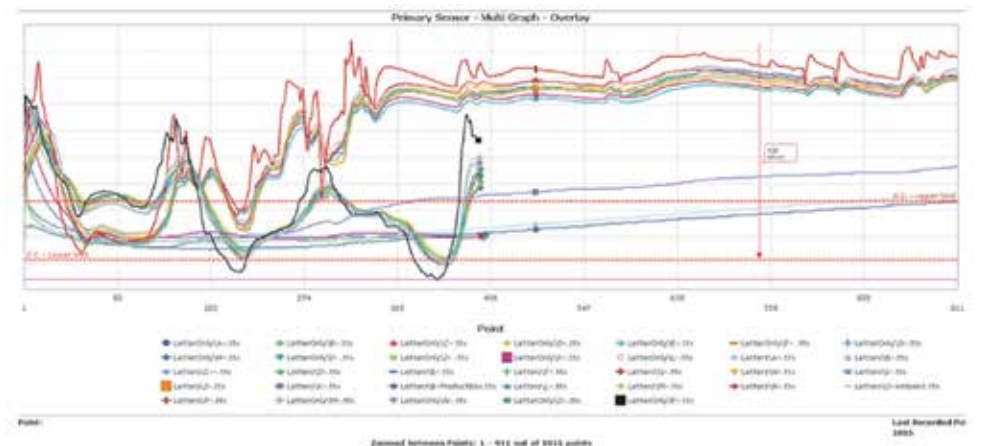
T 01985 214111
sales@polarthermal.com
www.polarthermal.com



vehicles. It's space saving when stowed flat, allowing the plastic crates to be nested, The Polar Dot-Box™ delivery system, is perfect for chilled, fresh or frozen goods.

In light of the recent COVID-19 pandemic, Polar Thermal Packaging Ltd, has been busy supplying vaccine carry bags as part of its vaccine transport range, which come available in various sizes, 10, 20 and 30 Litre carry bags. These are ideal for vaccination programs, lasting up to twelve hours plus.

The specially designed inner lid, reduces thermal loss, whilst helping to maintain temperature, despite repeated opening of the bag.



Real Tamper Evidence Is An Integral Part Of The Supply Chain

The increase in need, leads to growth in opportunities for tamper evident security. The role of "real" tamper evident security labels and box tapes is developing quickly, as an integral part of the supply chain in 2021 for B2B and B2C. The growth in two major market sectors; food delivery and logistics has seen demand increase for practical, effective and technical security solutions to protect goods from interference on their journeys.



The food home delivery market has

grown exponentially across fast food deliveries, meal subscription boxes as well as the increase in online supermarket shopping.

Within the logistics and supply chain sector the multi layered security approach for inner and outer packaging supports product traceability through utilising sequential numbers, barcodes and QR codes which can be paired with tamper evidence. Thus, delivering robust, secure packaging solutions from the threat of counterfeiting, theft, contamination and exposure especially with the extended supply chains now having to be a consideration too. Tamper evident labels are

practical to use and provide an instant layer of security. These tamper evident labels, tapes or perforated strips of liner-less labels are an inexpensive, fast solution to securing packaging. The flexibility of product design, security features and adhesives, ensures that the labels and tapes can be applied successfully to many surfaces from cardboard, plastic, painted metal to glass, wood and flexible packaging.

Permanent tamper evident tapes provide clear indication of tampering by revealing a hidden message when peeled off or altered that cannot be replaced. The permanent message left on the

surface is called the void message and this can be as simple as words, in any language, saying, OPENED, DO NOT USE IF SEAL BROKEN to barcodes, numbers and QR codes verifying the products authenticity.

Tamper evident tapes and labels are easy to integrate into existing processes so there is no cost to change, just enhanced security and consumer protection.

To find out more contact
T 01335 300335
Harriet@tampertech.net

Finpromach Ltd Improves Your Process Efficiency and Operator Safety



Finpromach Ltd, established 2018, uses 25 years of industry experience to represent equipment from prestigious manufacturers from the UK, Europe and USA including Palamatic, Gericke, Andocksysteme, Austar UK, LAST Technology, Vac-U-Max, Bila (Global AGV) and Hallins.

Operating in the fields of Powder and Materials handling, Containment, Isolation, Washing and Sterilisation widely used in regulated industries such as Pharma, Food and Chemical.

Recently developed with Palamatic, was a new fully automatic Atex compliant sack opener to replace conventional manual sack tipping stations.

The PAL F-AST (Palamatic Fully Automatic Sack Tip) occupies a small footprint and addresses problems of manually handling and opening sacks. Operators can process a range of sacks without concern of manual handling contravention (HSE) and exposure to dust potentially hazardous to health (COSHH).

The PAL F-AST opens sacks at 1-5 minute within a dust tight cabinet, then compacts the emptied sack into a polythene tube for easy waste sack removal.

Complementary ancillaries include vacuum sack lifter, robotic infeed, explosion mitigation, size reduction, powder grading, rotary valves, CIP, drying and a conveying system for the next stage of the process such as mixing.

Using equipment from Finpromach improves house-keeping, process efficiency, manual handling, operator safety, especially when dealing with dusty or toxic compounds.

Finished product quality is ensured to limit wastage from contaminated batches of product, whether that be pure printing inks, injectable vaccines, or food ingredients.

Recent news is the partnership with Bila and their Global AGV automated pallet handling solution. Repetitive pallet movements (such as end of line to wrapper and then warehouse) can be automatically undertaken without operator intervention. With a fast payback time process efficiency is vastly improved, with no product or fork lift damage caused by human error or carelessness. Routes and procedures are easily altered by the local supervisor using the innovative control interface requiring only a single day of training.

Contact
M +44 (0)7985 332025
sales@finpromach.com
www.finpromach.com

WISE - USING TECHNOLOGY TO IMPROVE EFFICIENCY IN LOGISTICS



Operation efficiencies and cost savings are two things that any business looks at when looking to improve its bottom line and overall position. Simon Hills, CEO of self-employment technology company, Wise, looks at how the logistics industry can make these improvements by harnessing innovation.

Simon Hills, CEO of Wise, said: "Whether

the range of issues around engaging a large workforce of self-employed subcontractors. For example, our new Wise platform is already being used by over 160 UK logistics firms to:

- ▲ Reduce the time it takes to onboard a new subcontractor by providing a mobile app for uploading documents
- ▲ A dashboard that provides the company with key information about its workforce
- ▲ Ensure robust compliance protection is in place in line with HMRC and audit requirements



"These key functions of the Wise platform are providing a clear competitive advantage to our clients who can save time, money and stress whilst improving the way they can engage with their self-employed workers.

"Whilst there are a multitude of business reasons why harnessing technology may suit any individual company, it is important to look beyond the primary business benefits and towards how this may improve the way a brand can communicate with its self-employed workforce. If using technology means you're able to communicate and work more effectively as a business, this is going to provide so many intangible benefits whilst increasing efficiency at the same time."

Wise is currently used by over 160 UK logistics businesses and over 8,000 self-employed subcontractors to save time, money and stress.

To find out how using Wise's platform could benefit your business, head to www.withwise.com.



we like it or not, technology plays a massive role in all of our lives in ways that could never have even been imagined twenty or even ten years ago. However, some logistics businesses are hesitant or reluctant to use innovation to improve processes - but why is this?

"Of course, how easy it is to integrate technology and digital solutions into a business' processes will largely depend on the scale of the company. Nonetheless, using software to cut back on the paperwork and admin hours needed for a business to operate is a universal way to improve efficiency and free up all-important time for your team.

"This room to improve efficiencies is particularly applicable within logistics, where we've worked closely with hundreds of businesses to understand



NE Fasteners Celebrating 35 Years 1985-2020

NE Fasteners Limited, a family owned company is celebrating their 35th year of business. With Nigel Elliott setting up in his garage in Halesowen, it soon became apparent his in-depth knowledge and expertise of the trade was invaluable and is still very much involved on a day to day basis. This would not have happened without loyal and supportive customers, suppliers and staff alike.

We primarily specialise in screws fixings & fasteners for the DIY, hardware, building, joinery and furniture manufacturing sectors. NE Fasteners prides itself with offering expertise, competitive prices from local and internationally

sourced standard and bespoke products. Our warehouse is situated in a 7,000sqft warehouse in Cradley Heath in the West Midlands, we are able to provide a wide range of finishes, including zinc, electro brass, black chrome, satin chrome, bronze and nickel, and packaging options, ensuring that many buyers consider us to be a key and valued supplier.

More recently, Screwshop has evolved from its established sister company NE Fasteners and has also proven a huge success with its online shop.

After 5 years in operation, we have grown year on

year and seen an increase in sales with the recent lockdown. We are now looking to increase stock and make it even easier for customers to order.

With friendly and experienced staff, our aim is to offer excellent service with our next day deliveries and give an opportunity for our customers to let us manage all fixings, fasteners and component requirements competitively.

Have a look at our online shop www.screwshop.co.uk, or give us a call on 0121 559 8866 with your enquiries and we will give you our best attention and prices at all times.



Manage Your Assets with RFID

Major operations involve hundreds or thousands of different assets and it's easy for valuable equipment to be misplaced or lost. Taking inventory of your assets is a time-consuming and sometimes inaccurate process. That's where RFID Asset Management comes in. With all of your assets monitored by RFID tags and readers, you can know exactly what equipment you have available in real-time. That information helps prevent losses and helps you make informed business decisions. But the benefits don't stop there.

With RFID, you can track not only the location of the asset, but also its condition. RFID tags enable you to instantly see when equipment was last inspected and when it's due another inspection or to be replaced. This reduces downtime because you can repair or replace important equipment at the right time. It also streamlines your maintenance process.

You can also track the movement of assets, so you get alerts when a piece of equipment has left its designated area. People can also be tagged with RFID bracelets, which can be vital when moving heavy equipment, to improve safety by ensuring each worker is out of the way.

RFID Asset Management is a solid investment for any business that has a lot of valuable assets to track. Benefits of RFID Asset Management include:

- ▲ Gaining real-time visibility of your assets
- ▲ Saving time over manual stocktakes
- ▲ The ability to locate assets using RFID
- ▲ Tracking the movement of assets
- ▲ Improving maintenance
- ▲ Improving compliance

Examples of companies who have used RFID to gain a great ROI with asset management include a US government agency, which tracks 250,000 assets with 100% accuracy. They have reduced their stocktaking time by 80% and achieved a positive ROI in 18 months.



Another example is a technology company that stocktaking used to take two weeks and it now takes just four hours and they have increased their inventory accuracy from 46% to 99.8%.

If you have valuable fixed assets and are having trouble keeping track of them, an RFID asset management solution can not only save you time with manual tracking, but also save you money by reducing lost assets and improving maintenance.

RFID Asset Management is suitable for large or small businesses, with flexible monthly plans available.

Ready to get started with RFID asset management? Contact TEC-RFID for a free consultation and online demo.

TEC-RFID

T 0844 870 7873
info@tec-rfid.co.uk



TEC-RFID Everything RFID in One Place

We are experts in helping businesses improve efficiency through RFID solutions. RFID, which stands for Radio Frequency Identification, is a technology system that can identify an object using radio waves. At TEC-RFID, we believe RFID will bring big advances to retail, warehousing, manufacturing, construction and more. We make it as simple as possible.

Contact us for more information by emailing info@tec-rfid.co.uk or visit www.tec-rfid.co.uk

Optimise your pipework with swivels

Rotaflow have 35+ years experience in designing and manufacturing Swivel Joints. We solve and resolve engineering problems where fluids need to be transferred across rotating interfaces, without leakage.

Rotaflow have produced Swivel Joints for many applications within most areas of engineering and all over the world: From Brewery, Dairy, Food & Drink, Process & Plant, Drilling & Mining, Oil, Gas and Subsea, Nuclear and Chemical.

Through design and in-house manufacture our swivel joints can allow one or more different flows through a single unit, enabling the pipework to rotate 360 degrees whilst carrying fluids (including hydraulic and pneumatic) of different pressures without cross-contamination or leakage.

Some applications require articulated pipe work or hoses to allow fluids; such as Hydraulic Power, Air (pneumatic) control lines, or mixed process fluids to be used on moving machinery. Swivel joints will allow the movement on a slowly rotating drum or remove the damaging effect of twisting on hoses. By fitting a Swivel Joint you reduce the torsion in a hose/pipe so it can move more freely thus extending its life.

And there are many different forms of Swivel Joint... from very straight forward designs of our F and FS series, Compact swivels or Heavy Duty to Articulated Pipework configurations, Floating Suction Arms, Jacketed, High-pressure.

A Swivel Joint reduces costs by reducing the risk of leakage with its associated downtime. And by fitting a quality designed swivel you are improving your production capacity.

We are specialists in taking your bespoke requirements and being able to design a solution that can fit your budget, dimensions, materials, FAT/witness testing; hygienic and pressurised environments. We regularly test to Hyperbaric, Seal Life and conduct Temperature/Pressure/Load Cycle Testing. We are ISO 9001:2015 certified.

We have off-the-shelf solutions that are ready to go, or we can redesign and in-house manufacture to enable a quick turn-around with minimal fuss and maximum design experience.

Rotaflow have built up a reputation for providing reliable and quality designed products that resolve your engineering needs and we are proud to say many customers request our services over and over again.

To find out more please visit our website and/or give us a call.

T +44 (0)1663 735003
Sales@rotaflow.com
www.rotaflow.com



ONLINE COMMERCE AND DISTRIBUTION: NEW NEEDS IN WAREHOUSES

In recent months, online commerce has grown exponentially, thanks also to the lockdown imposed by the Covid-19 emergency. And, according to analysis, buying online is a trend that will continue. Thus consumer buying habits have changed and companies, especially those operating in the distribution field, must in turn adapt their structures and processes. Including in warehouses.

New needs in the warehouse

Online commerce comes with specific needs for those involved in distribution: to respond to increasingly just-in-time logistics, storage and material handling solutions must guarantee flexibility, precision and efficiency in the management of stock and product flows. In this context, automatic vertical storage systems such as Vertimag, the new system designed by the Ferretto Group and offered exclusively in the UK by Quickline, offer companies significant advantages.

The advantages of an automatic vertical storage system

- ▲ Increased order and better management of available space
- ▲ Efficiency in order preparation
- ▲ Easy and fast picking
- ▲ Better traceability and management of stock
- ▲ Efficient management of flows and real-time connection with the corporate ERP
- ▲ Increased safety and ergonomics for personnel

AUTOMATION FOR ONLINE COMMERCE AND DISTRIBUTION

The efficient management of the warehouse and of incoming and outgoing flows is a priority for companies operating in the distribution sector. In fact, this also impacts competitiveness and the ability to meet the demand of points of sale and customers. In addition to the mentioned advantages in terms of space optimization, an automatic vertical storage system like Vertimag offers a completely automated logistics system in which cutting-edge technology guarantees efficient picking and placing operations.

An organized and well-controlled warehouse

Automation allows for the continuous control of a warehouse. The management of stock and flows is monitored and operators know the position of the products and the available quantities at any time. Thus this system guarantees efficient order preparation and ease of picking. Moreover, storage systems like Vertimag increase efficiency also thanks to a wide range of trays and accessories that ensure orderly and rational storage and, consequently, a reduction in picking and order lead times.

Just in time management

Thanks to the management software developed in-house, all picking operations are monitored and documented: operators can thus quickly check the status of all machines and know precisely the quantity of stock held in the warehouse in real time, thereby avoiding both over and under stock. The storage system can be connected to the company's management software (ERP) and communicate with it to manage data, advanced searches, and production lists.

In this way, remarkable accuracy is achieved in the traceability and management of stock, as well as the total management of flows, with a significant reduction in picking list processing times. In practice, this means that the operator is able to know in real time if the goods in a certain lot - or even in a specific pallet - are in the warehouse, when they entered, when they left, and for which order they were shipped.

AT WORK, IN THE BEST CONDITIONS

The choice of an automatic storage system also comes with significant improvements in working conditions.

In the case of Vertimag, the wide range of trays and accessories ensures that operators always work in conditions of maximum safety and ergonomics, guaranteed by the height and structure of the trays. Laser pointers and the alphanumeric LED bars also guide the operator, thereby making picking easier, more comfortable and accurate while also eliminating the risk of confusing similar products.

With Vertimag, ergonomics and speed go hand in hand

The efficiency of an automated storage system like Vertimag is also enhanced by specific innovations, for example the exclusive Ergo-Tech system: thanks to a second lift located in the structure, it manages the flows of a double bay, increasing productivity, reducing space requirements, and creating an ergonomic environment.

For more information about the Vertimag VLM visit www.quicklinestorage.co.uk



VERTIMAG VLM - Reduce your footprint by 1/10th

The innovative Vertimag Vertical Lift Module (VLM) storage system maximises the height of the warehouse whilst reducing the footprint by 1/10th.

The result? Increased picking productivity, reduced handling errors, maximised product security and improved stock management.

Visit www.quicklinestorage.co.uk or call 0113 880 0866 to find out more.



Fast Valve Response Keeps Fowey Dry

Immediate dispatch wins T-T Pumps the contract to supply South West Water for their Fowey sewer upgrade project.

The South West Water sewer upgrade project at Fowey needed a supplier of specific and unique recoil non-slam check valves. T-T Pumps was the only supplier who could meet their requirements.

Fowey is a picture-postcard harbour town in South Cornwall. Over the past few years,

the residents had been experiencing several internal and external sewer flooding events centred around the Whitford Yard and Lostwithiel Street areas.

To protect residents from future flooding and enhance public health, South West Water designed a new sewer installation project that would transform the 70 metre-long existing sewer between Whitford Yard and the Town Quay pumping station into a modern service residents could rely upon not to flood.

Completed in February and March of 2021, the project South West Water undertook was not without its challenges: The narrow streets of Fowey and the need to close main thoroughfares had to be managed to minimise disruption, which included when components would be delivered to site.

South West Water's planning for the Fowey sewer upgrade was detailed and included state-of-the-art valves that would be integral to



deliver a reliable defence against any future flooding. Once the project's specifications were complete, it was apparent which company had the valve technology needed and could supply this time-sensitive project with ease.

Gareth Reece, Internal Sales Engineer, T-T Flow, explained how being able to supply the required valves from stock was critical for the Fowey sewer project:

"T-T Pumps were clearly the ideal supplier as these valves are ready to go from stock," Gareth explained. "The time constraints and circumstances involved in this project due to low tide, access to the public areas, harbour master accommodating the installation and a trailer full of safety equipment already set up, meant that we had to react quickly and efficiently to hit these tight deadlines. Due to our flexible approach and constant customer communication, we were able to arrange dedicated transport to ensure they arrived on-time."

Efficient valve supply

The DN150 recoil non-slam check valve is unique to T-T Pumps. In addition, the T-T Flow recoil check valve features weld deposit bronze seats, unlike competitor valves that tend to offer push-fit seats, which risk detachment under higher velocities.

In addition, the T-T Flow recoil check valves unique design ensures rapid closure where extreme flow exists. Its robust design incorporates an angled seat, and its high eccentricity design reduces the risk of water hammer and valve slam.

Also, mechanical assistance is gained by reducing inertia coupled with the optimal suspension of the moving components. Ideal check valve for reducing water hammer in supply systems, often caused by sudden changes in pump state, benefitting from reduced door travel to minimise the potentially damaging effects of water hammer.

As a result, the DN150 was a perfect choice for the demanding environment of the new Fowey sewer.

Managing Director Bob Nash commented on how T-T Pumps have continued to innovate with unique valve technology: "T-T Flow have invested heavily in our UK in-house research and development team. Utilising the latest design software, we are constantly able to re-evaluate our products which gives us the flexibility to meet our customer's ever-changing needs."

South West Water knew they had to partner with multiple contractors to deliver the Fowey sewer upgrade on time and with the minimum level of disruption to residents, and ensure all works were completed before Fowey welcomed its annual visitors.

T-T Pumps' long-term development of recoil valve technology and its position as a direct supplier meant South West Water had to look no further for the essential valve supplier they needed.

Ultimately, the Fowey project was successful via detailed advanced planning, which included using a supplier that consistently meets the high demands of companies across the water industry.

If your business is struggling to find the right supplier, call our experts today:

T +44 (0)1630 647200.
www.ttpumps.com



Kingston Engineering is a leading precision engineering company, expert in the manufacture of specialist power screws.

Using materials and specifications to suit customer's exact needs, we produce cutting edge, power screw components with complimentary nuts and fittings. We provide specialist precision engineering services to a diverse range of industries both in the UK and across the world.



With our origins dating back to 1919, Kingston Engineering has an enviable reputation for providing engineering excellence, built on skill, innovation, and expertise. Our strength is our focus on providing a solutions-based approach, delivered to the highest quality standards.

With state-of-the-art equipment and facilities, Kingston Engineering are committed to innovation and continued investment in advanced technologies. Combined with expert knowledge and engineering skill, we facilitate great flexibility and rapid response to meet all your specific engineering requirements.



+44 (0)1482 325676 sales@kingston-engineering.co.uk Follow Us

www.kingston-engineering.co.uk

Kingston Engineering Co. (Hull) Ltd. Pennington Street, Hull, East Yorkshire. HU8 7LD. UK

The AI enhanced CSR matchmaking platform helping companies meet requirements of the Social Value Act



UK tech start-up whatimpact is an innovative platform that matches companies and grant-makers with charities and social enterprises in a strategic, efficient and transparent way. It sets a new precedent in how Company Social Responsibility (CSR) and social value is established, managed, and reported on - all hosted on the whatimpact platform. The platform is a solution for organisations that want to deliver social value and make a difference.

Companies are increasingly committed to engaging with societal issues in a meaningful way and whatimpact is a tool to help manage the hard work. The platform matches companies according to their goals for social impact, offers easy to use due-diligence templates and streamlines impact reporting.

The platform is also a solution for companies who want to implement strategic CSR or have to meet the requirements of the newly enhanced Social Value Act via the Procurement Policy Note 06/20.



AI matching for companies donating money, skills, products and services
The platform matches organisations based on shared values, UN Sustainability Development Goals (SDGs) and geographic needs across

the country so that companies can direct donations and skills to the organisations that need them most. The whatimpact innovation caters to the needs of companies looking to strategically engage with charities and social enterprises as part of their wider mission to make a positive difference alongside their usual operations. whatimpact can help enable any size or type of company to deliver social value based on their strategy and goals. Companies involved in the initiative include EY, McLaren, Brewin Dolphin and Engie, alongside a number of SME's. They are all offering very different forms of support through whatimpact either in order to fulfil UN SDGs, meet the Social Value Act requirements, or simply engage in good practice.

Organisations across the country are benefitting from skilled EY volunteers
EY is the latest company to sign up to whatimpact's platform, and will offer a series of business clinics to charities and social enterprises grappling with business challenges. Based on research conducted with whatimpact on the most significant pain points facing organisations, EY has developed clinics on managing finances, achieving scale and growth, and building resilience in times of uncertainty. EY will also look to offer one-to-one coaching to help those involved continue to solve their business challenges.



Meeting the requirements of the Procurement Policy Note

The recently enhanced Procurement Policy Note requires companies that work on Government contracts to have a social value delivery plan*, and to report back on their impact in local areas. The legislation has changed the way companies linked to the Social Value Act must report on their past, present and future impact and whatimpact also caters to these needs.

Open data and transparency

whatimpact is an advocate for transparency with public profiles on its platform for all users and with information on donations, partnerships and the impact being made together. Supporters (companies and grant-makers) can post resource offers (money, skills, product and service donations) on their public profile. Recipients (charities and social enterprises) can then apply for the resources they need. Both Supporter and Recipient profiles offer transparent data pulled from the

Charity Commission, the OCSR, 360Giving and Companies House. whatimpact membership packages offer companies a targeted matching process with due diligence procedures and globally valid impact reporting tools, which provide evidence and communicate the impact of a company's contributions.

You can sign up your SME on <https://whatimpact.com/> and begin making an impact with organisations that share your vision of a brighter, more sustainable future.

CAMB MACHINE KNIVES "A Cut Above the Rest"

Our range includes many types of blades, but not limited to:

- ANVIL
- BAGGING KNIVES
- BOTTOM KNIVES
- CARPET KNIVES
- CIRCULAR KNIVES
- CONFECTIONARY KNIVES
- GRANULATOR KNIVES
- POULTRY PROCESSING KNIVES
- POULTRY UTILITY BLADES
- STRAIGHT KNIVES
- TOBACCO KNIVES
- TOOTHED KNIVES
- TOP DISHED KNIVES
- TRAY FORM KNIVES
- COFFEE GRINDER BLADES (INSTANT COFFEE)

We have been supplying our knives worldwide for over 30 years.

We deal with carrier and freight companies so we always remain competitive for price on any destination.



CAMB MACHINE KNIVES INTERNATIONAL LTD

Tel: 01454 322178 | Fax: 01454 321172
Email: sales@camb-knives.co.uk
www.camb-knives.co.uk

MANUFACTURERS AND DISTRIBUTORS OF MACHINE KNIVES TO ALL INDUSTRIES



Decontamination Service of the Year



Established in 2014, Sanondaf UK provides whole-room decontamination via three unique forms of advanced technology – a fogger device, electrostatic spray and a vacuum. Sanondaf treatments have been purposefully designed to be significantly more efficient than traditional methods such as a deep clean, which is often time-intensive

and carries many risks such as cross-contamination. The company's hydrogen peroxide solution is authorised for use as a biocide by the ECHA (European Chemicals Agency). It can be used on any type of surface materials, including electronics, stainless steel, soft furnishings, food preparation surfaces and the air itself.



SANONDAF

touch-less disinfection services

Specialist Disinfection & Decontamination Services

With clients ranging from the NHS, research laboratories and pharmaceutical manufacturers to nursing homes, nurseries, schools, transport providers and blue-chip companies, Sanondaf's disinfection treatments achieve a 4 to 6 log rate (99.99% to 99.9999%) for the destruction of over 280 harmful viruses, bacteria, fungi, mould, yeast and other microorganisms.

Our treatments are non-corrosive, contain no toxic ingredients and our application methods ensure they are not harmful to people, animals or the environment. Unlike other disinfectants (such as chlorine compounds, quaternary ammonium compounds and chlorine dioxide) the HPV used in our treatments naturally decomposes into water (H₂O) and oxygen (O₂), thus ensuring no harmful chemical residue remains. It is safe for use in ALL settings, including healthcare operating theatres, critical care units, and is also CASA (Civil Aviation Safety Authority) approved.

SANONDAF disinfects enclosed and open spaces using SANFOG & SANOSTATIC spraying devices. It can be used in domestic, most industry sectors and markets including:

- ⊕ Hospitals
- ⊕ Life Sciences
- ⊕ Office & Work Environments
- ⊕ Care Facilities
- ⊕ Schools & Universities
- ⊕ Events Industry



Get in touch:

01236 702 028 info@sanondaf.co.uk www.sanondaf.co.uk

Unlike other disinfectants (such as chlorine compounds, chlorine dioxide and quaternary ammonium), Sanondaf's solution naturally decomposes into water and oxygen, ensuring no harmful chemical residue remains. Treatments are non-corrosive, contain no toxic ingredients and the application methods ensure they are not harmful to people, animals or the environment. Sanondaf has offices strategically located across the UK, enabling the team to be within close reach of Liverpool, Leeds and Harrogate, Newcastle Central, Cardiff, Kent and London Docklands. The company works with a number of specialist providers across a wide range of sectors, including the NHS, leading universities and pharmaceutical companies.

The judging panel was particularly impressed by Sanondaf's efforts during the COVID-19 pandemic. Decontamination services have become essential to almost every business regardless of sector in the last 12 months, and since the pandemic began, the company has attended more than 4,000 calls in relation to COVID.

Treatments have been delivered across all parts of the mainland, on the Western Isles and offshore on platforms and vessels. Sanondaf's professional and highly skilled team are available 24/7 and provide a fast and effective service that ensures minimal disruption to a client's normal operating hours.

Due to supply chain difficulties in 2020, the company was also unable to source additional decontamination devices and so designed, manufactured and tested a completely new unit that has now become the business' primary device. In addition to Sanondaf's own technicians delivering treatments, the company has leased out several of its new devices to venues such as the NHS and veterinary hospitals.

Contact
T +44 (0) 1236 702028
info@sanondaf.co.uk
www.sanondaf.co.uk



QUALITY HINGES FOR OVER 200 YEARS

Gold & Wassall have been manufacturing hinges for over two centuries, so it's safe to say we know what we're doing. Our team of experts can design and manufacture almost any hinge, for any application. We have made upwards of 250,000 unique hinge designs, with more designs being drawn up each day.

SEE MORE AT GOLDWASSALLHINGES.CO.UK/BESPOKE



BESPOKE HINGES



GOLD & WASSALL

EST. 1790

01827 63391 - SALES@GOLDWASSALLHINGES.CO.UK -  @GWHINGES

The UK's Number One Manufacturer of Hinges

In this issue of Best Practice, we are proud to announce that we have selected Gold and Wassall Hinges as the recipient of our Hinge Specialist Company of the Year Award.

With an impressive, expansive history spanning over 200 years, Gold and Wassall Hinges was first established in 1790. From the company's manufacturing facilities based in Tamworth UK, Gold and Wassall Hinges provides a range of services for design, production and manufacture of hinges, all produced in house and distributed throughout the whole of the UK. An industry leader in its trade, Gold and Wassall Hinges has established itself as the UK's number one manufacturer of hinges.

"We pride ourselves on the quality of what we make. We manufacture all of



our hinges right here in Tamworth, so we have complete control over the quality of our goods. Other hinge companies import from abroad, which means we might not always be the cheapest, but we are certainly the best in terms of quality." Said Scott Bareham, Sales and Marketing Manager.

Gold and Wassall Hinges provides a full turnkey comprehensive design and manufacturing service, offering a wide range of hinges including: piano hinges, butt and backflap hinges, standard, heavy duty and bespoke made to order hinges. With an extensive range of stock on offer, Gold and Wassall Hinges is equipped to meet any hinge requirements and all of its stock is available for immediate dispatch.

"All our hinges are UK made; we are the only hinge company in the UK which can offer this. We offer a bespoke design and manufacture service, which means we can create virtually any hinge from a simple idea." Added Scott.



"Our bespoke hinge service is ever growing in popularity and is possibly our biggest asset. We make all the hinges no one else can - we have an in house toolroom which helps us meet customer requirements which would usually be dismissed. We have made over 250,000 unique hinges now, and counting. It really gives the customer flexibility when designing a product." Scott noted.

Gold and Wassall Hinges has created over 250,000 unique hinges and continuously develops new patterns produced on a daily basis. The company is well equipped with

One of the main focuses of Gold and Wassall Hinges is to provide first class customer service. Ensuring that from initial inquiry to delivery and aftercare, Gold and Wassall Hinges' team engages on a personal basis with each customer to find out their specific requirements, measurements, application and style, to ensure they find the right door hinge for the individual's needs.

While providing an impressive range of off-the-shelf hinges, Gold and Wassall Hinges understands that for some projects, a custom built hinge is required. Whether it's a simple design alteration such as rounded corners or a more complex design with multiple bends, the team at Gold and Wassall Hinges is dedicated to providing the right hinge solution for you, providing a bespoke custom-made hinge solution.

the knowledge, skill and tools to create solutions for any application and has the ability to meet mostly any hinge size or shape requirements.

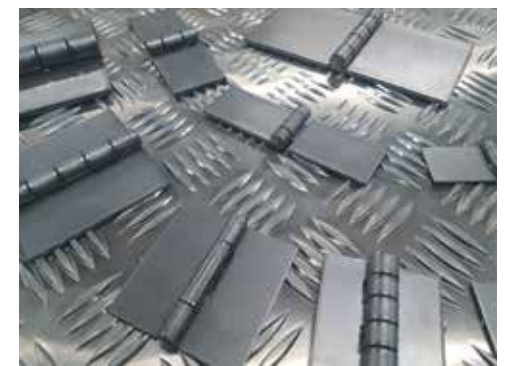
Another example of the company's customisation services, Gold and Wassall Hinges provides an abundance of finishing options for its customers. Able to customise colour, add branding and create a smooth premium finish. The company's array of finishing options is perfect for increasing protection, matching the application or to create that smooth premium finished look.



was approached for providing hinges for the Nightingale hospitals.

We spoke to Scott about how the COVID-19 pandemic has affected the company; he told us that, "We worked all the way through. We experienced some demand for hinges for the Nightingale hospitals, as well as a customer who is involved in the manufacture of food delivery vans. Although our sales obviously went down during the pandemic, we feel that we are making steady progress coming out the other side. We have managed to keep our workforce whole, with no redundancies."

After what many would describe as a tumultuous year, it is with great pride that Gold & Wassall Hinges receives our award for its hard work and dedication this year during these unprecedented times. We asked Scott about how the company



feels upon receiving our award, he stated that, "It's an honour to be selected for this award, and it is a satisfying nod to everyone here at G&W for their efforts over the past 12 months. It's been challenging at times, but we are proud to say we worked all the way through, supporting many key sectors too."

Speaking of the company's future, Gold & Wassall Hinges as well as much of the world, is looking towards a brighter, more productive year as the world slowly moves away from the restrictions of COVID-19. "The short term future is all about continuing to pull away from the struggles of the pandemic, and ensuring steady growth back to pre-pandemic levels of production." Scott continued, "The long term goal for Gold & Wassall Hinges is to grow as much as we can within our current market share, and look towards growing our export relationships too."

Gold and Wassall Hinges plans to continue its dominating presence in the industry. Scott stated, "We plan to continue doing what we have been for so long - if it isn't broke, don't fix it!"

For any further information, please see the details below.

T 01827 63391
www.goldwassallhinges.co.uk



With a history spanning across centuries, Gold and Wassall Hinges has seen and experienced many tribulations for the world and its industry since its fruition and has been able to maintain its production and dominate its industry. During the uncertainty for many industries during the on-going COVID-19 Pandemic, many manufacturers saw a halt in production and in sales. Demonstrating its renowned manufacturing capabilities, Gold and Wassall Hinges maintained production and





Polar Pod

The Polar Pod range of pallet shippers has been introduced to complement our reusable pallet shipper range. The range has been developed to reflect customer demand for a single use modular system that provides excellent performance. The systems combine a number of technologies ensuring safe transport, by land and air, of perishable products in 3 categories:

- + Deep Frozen: -18 to -14°C
- + Chilled: +2 to +8°C
- + Ambient: +15 to +25°C



Polar Thermal Packaging Limited is a UK manufacturing company based in Warminster, Wiltshire. We have an excellent track record in developing solutions for the medical, military and retail sectors.



Capacity Options

The system comes in 3 sizes:

- 1500 x 1200 x 1000
(1.5 m3 internal capacity)
- 800 x 1200 x 1000
(1 m3 internal capacity)
- 400 x 1200 x 1000
(1/2 m3 internal capacity)

The tri-wall cardboard shell combines with a liner made from insulated foil wrapped Polarthem™ fibre and appropriate coolants/gel packs/phase change packs to deliver fantastic results over 30, 48 and 72 hours. The Deep Frozen system has an additional thermal foam wall.



Address

Crusader Business Park, BA12 8SP

Contact

01985 214111

Email

info@polarthermal.com

Website

www.polarthermal.com

How the right environment can optimise X-ray inspection performance

X-ray inspection machines offer great benefits to CEMs and OEMs in both quality control and troubleshooting applications. However, the most powerful machines are complex, advanced-technology devices, so users need excellent training and support to optimise day-to-day performance.

This aspect is well-recognised by Newport-based CEM Axiom Manufacturing Services, who highly emphasise the 'human factor'. Their people-based approach to their workforce, customers and suppliers has facilitated remarkable growth, reaching £50.1m in 2019.

Accordingly, they continuously nurture and enable their workforce, while offering extremely high customer service levels. They also seek to work with suppliers who share their ideals, because this allows them to rapidly absorb and obtain competitive advantages from advanced-technology machines like X-ray inspection equipment.

Axiom recently demonstrated this strategy while upgrading their X-ray

inspection facility. They invited Cupio, as suppliers of inspection, production, and test solutions, to discuss an X-ray inspection upgrade. Firstly, Cupio reviewed Axiom's existing machine, providing insight into its full potential; accordingly, it remains in service, with improved benefits for Axiom.

Cupio then showed how the Nordson Dage Quadra 7 X-ray inspection and failure analysis machine's advanced technology would enhance both their production and troubleshooting activities.

Along with the Quadra 7's 100nm resolution and 4k image quality, it provides a massive improvement for higher-volume production because of its throughput. Easily programmable with automated routines, it accepts up to five boards simultaneously. This parallel processing is valuable where 50,000 boards/month throughput is typical, with batch sampling rates of 20 - 30 boards.

Axiom regards Cupio's ongoing training as absolutely crucial to their X-ray inspection success. The programme has



covered SMT inspection, BGA, QFN, and voiding measurements for customers, and through-hole fill measuring. It will also include Quadra 7's X-Plane CT functionality and μ CT, encompassing 3D plus 2D imaging.

To access the full article, please visit Cupio's website

www.cupio.co.uk/how-the-right-environment-can-optimise-x-ray-inspection-performance

Cupio
SERVICES

THE PLACE FOR Failure Analysis and In-depth Non-Destructive Inspection

Cupio Services brings knowledge and expertise gained through many years of working with some of the world's best X-Ray, test and AOI systems to our new facility in Chineham Business Park, Basingstoke.

Whether you need to diagnose production or in field failures, validate complex manufacturing procedures or perfect new product introductions, we're here to help.

We have a variety of cutting-edge inspection and test equipment on hand, including functional testers and counterfeit part detection, high resolution x-ray with multiple CT imaging options, and acoustic microscopes for delamination detection within boards or complex devices.

We have the capability to find the smallest defects within your samples and image them with sub-micron resolution. Full failure analysis reports can be provided to help you understand where and how issues are occurring.

Cupio Services Ltd ☎ +44 (0) 1256 262800 ✉ info@cupioservices.co.uk 🌐 www.cupioservices.co.uk
Beechwood, Chineham Business Park, Basingstoke, Hampshire, RG24 8WA

PPE is at the bottom of the hierarchy of controls

PPE is at the bottom of the hierarchy of controls because it is effectively letting the hazard exist in the workplace. You are exposing the person to the hazard and you are wrapping them up in some way to protect them from that hazard. In the case of a respirator a chemical is released, then a barrier is put on the person, as opposed to controlling the hazard at source.

If it's noise, the noise is released into the work environment and then a barrier is placed on the person. That relies on the person keeping that barrier in place for the whole time they are exposed to the

hazard. It assumes that anyone that walks into the workplace is going to have to put that protection on and maintain it while they are in that environment. It is really not controlling at source, it is controlling at the person, hence the PPE.

It's a demanding risk control in terms of management. A Director seeing someone not wearing their PPE correctly, or maybe not wearing it at all, can question and find out where the process has broken down. They can discover they don't have an effective management process they can use, and so prompts a move back up the

hierarchy of controls.

Finch Consulting is an engineering, health and safety and environmental risk management consultancy based in Ashby De La Zouch, Leicestershire. We can help you with compliance, reputation, productivity, enforcement and litigation risks.

Written by Susan Dearden and Dr Steve Cowley.

T 01530 412777
enquiries@finch-consulting.com
www.finch-consulting.com



Palamatic Ltd



Palamatic Ltd, established in 1985 are leading suppliers of materials handling equipment for use in industrial and cleanroom areas for handling product such as sacks, drums, boxes, IBC's, boards, pallets and reels. Thousands of systems are in use every day in manufacturing facilities where a product requires lifting and handling from one place to another.

The range includes vacuum lifters, automatic sack openers, post hoists, drum tipplers, wire rope hoists and mobile handling systems. All can be supplied to meet ATEX regulations and GMP standards to suit clean process areas for food, pharmaceutical and biopharma companies.

Palamatic take an innovative approach and remain focussed on developing new, unique and much-needed product solutions every year and equipment is designed and built in stainless steel to a high quality to ensure it is built to last.

Where a custom solution is required, Palamatic have a design and R+D team who can work with customers to provide a solution designed for their requirements. They are assured that Palamatic have the experience and talent to collaborate with them when they need something more bespoke, and they know they are guaranteed continuous life-long care and support for their equipment, their operator's safety and their own production commitments.

Providing equipment that ensures the safety of both the operator and end product, is a driving factor at Palamatic and systems are designed to reach the standards of controlled environments, and use the most robust and premium materials.

With a 22,000sq/ft factory based in Chesterfield, Derbyshire Palamatic are well placed to visit customer sites, and for customers to send samples to test prior to manufacturing their vacuum tube lifter. The company has a skilled field engineering team to install the systems and come into train operators. The company has a global network of experienced distributors and dealers and a factory in North Carolina, USA which services the North American market.

Contact
T +44 (0)1246 452054
sales@palamatic.com
www.palamatic.com



VISTAPLAN

Established for over 50 years, Vistaplan is the UK market leader in manufacturing and supplying drawing office equipment and drawing management systems. Based in Daventry, Northamptonshire, Vistaplan's products are suitable for use within a wide range of sectors, including education, architecture, studio, construction, engineering, graphic design, and all the way through to home crafts.

Vistaplan always strives to deliver the best service to its customers, demonstrating high standards of honesty and reliability. Reviews from customers can include statements like "the quality of the product and the workmanship are excellent", and "Vistaplan offers a fantastic price of durable products which are manufactured to a high standard." Vistaplan have also been accredited with ISO9001 since March 1995, giving customers the reassurance that they are dealing with a professional company.

Vistaplan offers a range of drawing hanger systems, which allow ease of access and manoeuvrability. The Trolley Carrier maximises the number of drawings stored per square metre of floor space. It will hold a maximum of 20 hangers, fitted with or without handles, and offers a capacity of up to 2,000 sheets.

As well as the hanger systems, Vistaplan also offer a selection of cabinets. The Standard Cabinet is made from high quality metal and holds up to 1,000 drawings/sheets. The lockable lid features twin gas struts, for safety and ease of use. It is finished in two tone grey or white, with other colours available on request; in either A1 or A0 size. These cabinets are essential if you wish to store large plans or drawings in a safe and secure manner.

If you would like more information on Vistaplan's diverse range of products, head to their website or get in touch using the contact details below.

T 01327 704767
sales@vistaplan.com
www.vistaplan-drawingmanagement.co.uk

Award-winning noise and vibration damping technology

Sound Damped Steel (SDS) is a multi-award-winning noise control company which was established by Les Thompson in 2003 with the main aim being to develop, manufacture and supply materials for industrial noise and vibration control applications.



"The company make steel which absorbs vibration making it sound like rubber. It is supplied to OEM manufacturers to make chutes, hoppers and machine guards quieter, we also

supply kits to retro-fit on existing noisy machinery which is a much more cost effective way of dealing with noise issues for a lot of businesses." Added Les Thompson, Managing Director.

SDS draws upon over 30 years of experience in developing new and practical applications across an extensive range of projects to help both end users and leading noise and vibration control consultants in solving their problems.

A speciality is pipelines. Gas, oil and other pipelines with their associated equipment such as valves are renowned for generating high levels of noise that require a solution. The current noise control measure is acoustic cladding. However, this contains a multitude of drawbacks such as the need to be



removed frequently for inspection and additional associated problems such as condensation and corrosion. To tackle this SDS in conjunction with the INVC developed the Quiet Pipe Technology system which negates all the problems associated with current technology. Quiet Pipe works by interlocking acoustic close shields that effectively convert the pipe itself into a silencer element to diminish noise.

Another service created by Les is sounddeck.co.uk "As a Hi-Fi enthusiast I made some damping feet and a turntable mat for my sound system. They worked so well that Sounddeck.co.uk was launched to make the products available to the public. We get excellent reviews which has led to worldwide sales." Said Les.



The Covid-19 pandemic has caused disruption for many industries and affected every company differently. Seeing an increase in its services during this time, Les remarked on its affect on SDS stating "We have benefitted from lockdown as people working from home were inconvenienced with noise coming from surrounding industrial sites, so we have been very busy supplying noise control solutions. Also, with an increase in leisure time spent at home people have been listening to much more music and upgrading their system with Sounddeck Hi-Fi enhancing products."

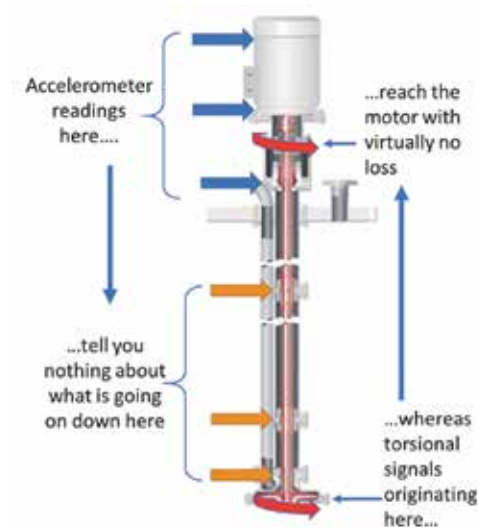
For any more information, please see the details below.

T +44 (0)191 259 0700
www.sounddampedsteel.com
www.sounddeck.bigcartel.com

A new twist on vibration monitoring!

Turn your motors into vibration sensors with Model-Based Voltage and Current (MBVI) systems to reveal hidden benefits

By Geoff Walker, Operations Director, Faraday Predictive



Condition Monitoring of rotating equipment can bring big benefits through avoiding unexpected breakdowns and enabling more efficient maintenance, with one of the most widely used techniques being Vibration Monitoring.

But some situations that are getting more common in industry such as variable speed drives, with the resulting varying loads and electrical distortions, can make vibration monitoring more difficult. And hidden problems in sound-proof enclosures, remote-

mounted, duct-mounted or submersible equipment can all make it difficult taking a vibration reading using a conventional accelerometer.

A new way of getting vibration readings in all these difficult situations can be provided by turning your electric motors into vibration sensors by using Model-Based Voltage and Current (MBVI) Systems. They detect the torsional vibration that is excited by a wide range of phenomena inside equipment, not just rolling element bearing faults.

They also monitor energy consumption and calculate the energy being wasted by these faults. So your motor can actually tell you more about your equipment condition than conventional Vibration Monitoring. For a deeper insight into how this



technology works, see: www.faradaypredictive.com/technical-education/mbvi-technology/

Torsional vibration

Conventional vibration sensors measure radial or axial movement of the shaft whereas torsional vibration is movement of the shaft twisting along its axis. The motor driving the equipment 'sees' this vibration as subtle variations in the torque required to drive the equipment, which in turn results in subtle variations in motor current relative to voltage.

This can be detected and automatically analysed by an MBVI system to provide a broad range of fault diagnostics and condition monitoring.

These systems also detect electrical faults and operational problems, eg is it being damaged by being overloaded or stopped and started too often?

Because a shaft is designed to transmit torque from one end to the other, the motor can pick up signals coming from bearings anywhere along the length of the shaft.

So even with a long shaft submerged pump like that illustrated, problems at the bottom bearing or any of the intermediate bearings can be detected. The different bearings can be discriminated by their different characteristic frequencies.

Faraday Predictive provides both fixed ('S200') and portable ('P100') units as shown here.

They also provide on-site service so you can 'try before you buy' using a P100 portable kit, giving you a risk-free way to prove the benefit before investing in buying kit of your own.

T 0333 772 0748
info@faradaypredictive.com
www.faradaypredictive.com

NEW AZM40 SOLENOID INTERLOCK WITH UL CERTIFICATION



Smallest electronic solenoid interlock in the world

The new compact AZM40 solenoid interlock now has UL certification, which means that it can be used in machinery and systems intended for the North American market. In addition, Schmersal has optimised the interlock as well as developed additional versions that incorporate specific customer requirements.

The new development has generated considerable market interest thanks to its compact 'on-trend' dimensions. With dimensions of 119.5 x 40 x 20 mm, the AZM40 is the smallest electronic solenoid interlock in the world. The AZM40 is the ideal safety solution for all machine builders looking for optimisation through miniaturisation, simplification and minimisation of materials.

The compact AZM40 can also be installed easily in confined and hard-to-access areas thanks to 180° angular flexibility of the actuator. An added benefit is its universal use on rotary and sliding doors with a single design version.

New enclosure versions

The AZM40 solenoid interlock and actuator are available in two enclosure versions. For typical use in mechanical engineering, there are enclosures with a flat, screw-on surface for cylinder-head bolts. For visually improved installation and where space saving is a priority, there is a version with countersunk tapers for countersunk bolts.

Low-energy safety solution

The AZM40 operates to a bistable holding principle. This means that it maintains its locking position and securely holds the guard door in the event of power failure, thereby preventing hazardous run-on movements. In addition, energy consumption with the bistable principle is lower.

Contact: Steve Watkins
swatkins@schmersal.com
www.schmersal.co.uk

CocoonFMS™ Ltd

We are delighted to announce the office launch of CocoonFMS™ Limited.

CocoonFMS™ is a UK based Logistics software company providing innovation, tools and systems that increase productivity, create cost savings and operating efficiencies to both logistics companies, freight forwarders, as well as providing accurate data and greater connectivity to their clients.

The CocoonFMS™ team is made up by industry and digital experts who bring over 60 years of experience within logistics industry. The management team consists:

Glen Tapper – Managing Partner
Gareth Walrond – Technical Partner
James Blackman – Managing Partner
Anthony Quinn – Commercial Partner

CocoonFMS™ products bring a range of partners together to form a one stop shop for Logistics software SMEs with our FMS portal at the very core of our product offering.

"CocoonFMS™ presents an exciting proposition to the logistics industry. Digitalising the supply chain by offering affordable software solutions which can allow the SME Logistics providers to compete with the larger freight forwarders. Our expertise

in Logistics is second to none and our 'hands on' knowledge of how clients interact with their data will be critical in providing the right software to enhance and improve our customers operations and customer loyalty". Said James Blackman.



Contact
sales@cocoonfms.co.uk
www.cocoonfms.co.uk
LinkedIn: /@cocoonfms
Twitter: /@cocoonfms



AZM150 SOLENOID INTERLOCK:

SLIMLINE DESIGN WITH 360° ROTATING
HEAD AND 1400 NEWTON CLAMPING FORCE



The AZM150 solenoid interlock can be combined with three different actuators for different installation situations: a straight actuator for sliding doors, an angled actuator for large revolving doors and a movable actuator for smaller revolving doors. One of the plus points of the interlock is the rotating actuator head which can be locked simply by putting the lid on rather than a screw fitting. The rotating actuator head has two feeder slots to enable a range of installation positions and approach options. This makes the interlock really flexible to use.

The AZM150 is an electromechanical design which can be combined with high safety standards. The interlock comes with a low coding level as standard but is also available with an optional high coding level. The benefit for users: in accordance with ISO 14119, a higher coding requires fewer measures to prevent the bypassing of locking mechanisms, such as fitting out of range or in a concealed position. Schmersal is the only manufacturer which can offer electromechanical safety switches and solenoid interlocks with high coding levels.

Scan the QR code to see the AZM150 in action or visit our website for more information.

SCHMERSAL | Enigma Business Park
Malvern, Worcestershire, WR14 10L

www.schmersal.co.uk
uksupport@schmersal.com

SCHMERSAL
THE DNA OF SAFETY

Valves for a Salty Life

The planned refurbishment of an effluent treatment plant on the Atlantic coast was required whilst maintaining full operation, however difficulties were realised at the planning stage, as three critical isolating valves had non-standard face to face dimensions and required to be resistance to the salt laden air.

The first consideration was to replace the adjacent pipe work to allow

the fitting of standard sized valves, but this was soon ruled out as this would result in major civil work and operational interruption, which could not be tolerated on a sensitive site. Consulting T-T Flow (a division of T-T Pumps) for help, T-T's engineers reviewed the problem coming up with a rapid engineered solution, which included introducing manganese bronze stems and further salt resistance materials.

The new valves were supplied on time within the tight schedule and to an upgraded specification to tolerate the extreme conditions and well within budget expectation allowing the site to continue to run without interruption.

For further information please contact T-T
 T 01630 647200
www.ttpumps.com



kentintrol
 Design | Engineer | Service

SPECIALIST CONTROL AND CHOKE VALVE MANUFACTURER SINCE 1967



KOSO

We engineer and supply high-quality valves to perform in some of the most severe service conditions throughout the world.

SEVERE SERVICE VALVES

High-performance valves for the most arduous conditions.

CONTROL VALVES

Bespoke solutions to cope with an application's unique service conditions.

SURFACE CHOKE VALVES

Flexible valve designs with a range of body and trim material options.

SUBSEA VALVES

Choke, process control and intervention equipment for seafloor applications.

BUTTERFLY VALVES

For specialist overboard dump or firewater deluge systems.

CONTROL AND CHOKE VALVE BRITISH VALVE MANUFACTURER SINCE 1967



At KOSO Kent Introl, we engineer and supply high-quality valves to perform in some of the most severe service conditions throughout the world. We have established a reputation for producing high-performance products on time and at a competitive price. Our product is hand-built in Britain to the highest standards since 1967.

Today, our precision-engineered products are used by some of the world's biggest brands who operate in some of the world's most demanding industries.

We custom build high-performance, reliable valves and solutions including Oil & Gas, Petrochemical, Power, and Industrial. In such industries, where a failure could be life-threatening, our customers enjoy peace of mind that their staff are protected.

We deliver exceptional engineering quality products tried and tested to perform in the most challenging environments, coupled with a strong customer focus. Everything we build is backed by first-class technical expertise and professional aftersales service. We know time is money, so our fast and accurate technical responses give our customers access to essential information immediately.

Engineering and manufacturing companies who demand the highest levels of precision, performance and responsiveness choose Koso Kent Introl.

www.kentintrol.com



SERVICING & MAINTENANCE

We have the facilities, expertise and flexibility to ensure that your valves are maintained safely, effectively and promptly.



UPGRADES & SPARES

Helping you specify and meet the changing needs of your valves and equipment to remain effective and fit-for-purpose.



OVERHAUL & REPAIRS

Our dedicated testing and aftermarket facilities enable us to manage entire overhaul and repair projects in-house.



ASSET LIFE EXTENSION

We can help you devise and implement a suitable strategy for asset life extension in your installations.

www.kentintrol.com

Tel: +44 (0)1484 710311 | Email: info@kentintrol.com

KOSO Kent Introl Ltd, Armytage Road, Brighouse, West Yorkshire HD6 1QF, United Kingdom.
 KOSO Kent Introl is part of the KOSO group of companies.



Helping to create a sustainable future



We are proud to feature Imtex Controls for our BP Recommends profile.

Specialising in the production and supply of advanced, high integrity valve actuation, communication and control systems for the energy, marine and process industries, Imtex Controls boasts many years of experience within the area of process valve control.

At the forefront of innovation, Imtex Controls' key offerings are its smart monitors and the Valve Diagnostic Monitoring System (VDMS). "For over five years, we have been supplying valve monitoring and testing solutions that are easily implemented into both new and ageing assets, to enable operators to log data from shut down valves. These solutions enable operators to meet their HSE commitments and help improve operational efficiencies," explained Jenny Myers, Marketing Manager.

Imtex Controls has also developed the Valvescan™ Diagnostic System, which is an end-to-end solution that captures data from every valve operation, analyses it and provides targeted alerts on the valve health without any requirement for involvement from plant personnel or any potential impact on the asset real-time control integrity.

This means that the valve will inform the plant personnel ahead of any maintenance or failure, preventing an expensive unscheduled shut down of a plant. It is also technologically ahead of many of its competitors, with a cloud-based application, which allows plant personnel to access the dashboard from wherever they are, not just on the actual plant itself. It is a true IIoT solution for automated valves and it can revolutionise the way plants maintain and run their systems in the future.

In addition, Imtex Controls is constantly working on improving its hydraulic, pneumatic and electro-hydraulic offering, including linear and low power solutions. Its Camtorc Actuators provide a highly efficient, backlash free operation which in turn helps to maintain the lifetime of the seals and components. They provide high actuation efficiency in a compact design, limiting the space envelope and associated costs of an installation. They also have the longest lifetime value of all actuators; Imtex Controls still has products that are operating in the field after 30 years.

Camtorc Actuators, along with Imtex Controls' Valve Communication products, can also be employed for use in Blue and Green Hydrogen Production systems, Carbon Capture and Storage schemes, Biofuel Production Processes and Waste to Energy projects.

"The Low Carbon market will be a key focus for us this year. Our products deliver greater efficiencies and sustainability for these projects, helping to achieve low emission



targets. There are several low carbon, CCUS and Hydrogen facilities being developed across the UK now, some that will be at procurement stage in 2021 and we feel that our products should be considered.

With our prevalence in this industry and our quality products, this is an area that we feel we can really offer lifetime value for money as well as products that can help these projects achieve

their end goal of a reduced carbon footprint."

Of course, COVID-19 has caused a number of issues for the industry this year, with closed borders and face-to-face business meetings impossible for the foreseeable future. However, as a manufacturer, Imtex Controls are considered key workers, and remain open and operating as usual. "We are not restricted by anything COVID-related and we are set up

to operate a COVID-safe factory and business."

To find out more and stay up to date with Imtex Controls' latest news, head to the website or get in touch using the details below.

T 08700 340 002
sales@imtex-controls.com
www.imtex-controls.com



We make Solutions...
 ...not just products



Reduce unscheduled shut downs, reduce maintenance costs and improve plant safety with our Valvescan Diagnostic Monitoring System.

Our revolutionary system is an end-to-end solution that captures data from every valve operation, analyses it and provides targeted alerts on the valve health without any requirement for involvement from plant personnel or any potential impact on the asset real-time control integrity.

It is a true IIoT solution for automated valves.

This system is not only a pioneering development in valve monitoring, it is also;

- Cost effective and easy to install
- Works with all existing valve systems
- Enables data retrieval and transmission to the cloud
- Provides a 'real time health' check on the valve and alerts when performance drop off is detected

Contact us to find out more:
 08700 340 002
www.imtex-controls.com





Tom Parker Ltd.

Your Partner for Fluid Power



Connecting the UK Since 1972

Our History

Next year 2022 will be a very special year for us as we will be celebrating our 50th anniversary. We are immensely proud to remain a family run business and of earning and maintaining our place as one of the leading fluid power distribution companies in the UK.

Our People

Many of our team have been with the company and working in this industry for a long period of time. Our Internal Technical Support Team and External Area Sales Managers have extensive experience and training, which enables them to provide advice when needed.

Our Exclusive & Market Leading Brands

Our focus has always been on supplying innovative, high quality, competitively priced product ranges. We now offer

more than 80 brands and application solutions that span the whole fluid power market.

Our Northern & Southern Locations

With our HQ situated in the North West of England (Preston, Lancashire) and our second branch located in the South (Basingstoke, Hampshire), we can ensure a quick and reliable supply network to the entire UK.

Our Trade Counters, Hose Assembly & Testing Facilities

Both premises have stocked retail units, engineers and on-site workshops where we can design, certify and test pneumatic hose assemblies up to 500 psi, hydraulic hose assemblies up to 30,000 psi.

Carefully Selected Products

Produced biennially, our new catalogue will launch in January 2022. Core and market leading brands include Aignep, Cejn, CPC (Colder Products Company), CDC

Pneumatics, Master Pneumatic, E.MC, John Guest, Festo, Fitok, Sicomat and Camozzi.

Our Stock Levels, Same Day Dispatch & Flexible Delivery

Our highly stocked warehouses enable us to provide a variety of delivery options (complete with tracking details) which include next day delivery before 9 am on stock items, Saturday morning delivery and no minimum order charge.

Our Customers' Come First

We regularly review our systems, product offering and services to ensure we keep evolving and are where we plan to be in the future. Our entire team are committed to providing a first class service to all our valued customers.

Our Supporting Credentials

Proud to be members of the BFPDA; we are also independently assessed by the BSI and accredited to BS EN ISO 9001:2015. Close relationships with our suppliers also mean that we can solve the most challenging of problems. Call today to see how we can help.



- ➡ High Stock Levels & Same Day Dispatch
- ➡ Exclusive & Market Leading Brands
- ➡ 35,000+ High Quality Catalogue Products
- ➡ Technical Support Team
- ➡ Hose Assembly & Test Facility
- ➡ Trade Counters at Preston & Basingstoke



Tom Parker Ltd

☎ 01772 255109 ✉ sales@tom-parker.co.uk 🖥 tom-parker.co.uk



STORAGE PROBLEMS?

We've heard it all.
Better yet, we've solved it all.

Get in touch with our Business Services team today to book your **FREE** consultation.

The trusted experts in space utilisation.



Scan me



BiGDUG

WWW.BIGDUG.CO.UK 0800 141 3380

Drilling deep to success

UNISIG is the world's leading supplier of the complete deep hole drilling system, offering machines, tools and automation systems whilst working closely with each and every customer to ensure that their drilling project requirements are met. A complete dedication to support and customer satisfaction helps stand UNISIG out as the number one supplier worldwide.

Founded in 1981 by Swiss Industrial Group (SIG) and the US company United Technical, UNISIG provided deep hold drilling equipment technologies to the US market.

A company called Entrust (established in 1973 by John Korosec) acquired the UNISIG brand in 1995 as a product division of Entrust and this coupling helped UNISIG redefine performance expectations in the deep hole drilling market, worldwide. Ever since this merger, UNISIG has dominated the market with its industry leading technologies and continues to radically reduce lead times on projects through its innovations and expertise. I had chance to interview Philipp Steimle, Managing Director of UNISIG's European Sales branch to find out more about the company.

"UNISIG deep hole drilling systems consists of machines, durable tooling and automation, and are designed to meet the highest performance standards possible. Products are engineered and manufactured in the USA using metric



wide variety of clientele including automotive, defence, oil and gas, energy, aerospace and medical companies to name a few, but any sector that needs deep hole drilling will benefit from what UNISIG offers.

"UNISIG deep hole drilling machines are proven with industry leading manufacturers in all regions of the world. UNISIG is chosen for its ability to consistently meet vital demands of tolerance. UNISIG stands out among industry players for its skills in handling large, complex projects including multiple machines and automation, process development and tooling testing, as well as custom engineering and turn-key projects."

UNISIG's latest line of machines, aimed at the mould industry, follow UNISIG's usual trend of creating solutions that are refined and efficient. Mould manufacturers are faced with the challenge of handling large workpieces that require deep hole drilling as well as machining with maximum precision. UNISIG's mould drilling and milling machines are specifically designed with market input to combine operations, reducing setup time and effort,



increasing accuracy, and eliminating design restrictions of traditional machining centres.

"We are currently releasing a whole new line of machines targeted to the mould industry, models USC1, USC2, USC3 that can finish mould production in maximum 2 setups which cuts down production time dramatically while being extremely cost-effective."

If you would like to find out more regarding the deep hole drilling machinery, other products and services UNISIG offers follow the link below for their website, or alternatively speak to them directly regarding your requirements and UNISIG's professional and friendly team will support you every step of the way.

T +49 (0)7125 9687590
info@unisig.de
www.unisig.com



hardware, and include the integration of premium components such as FAG, INA, Parker, Rexroth, Rohm, Schunk, SKF, Wittenstein Alpha and ZF. Products are designed following all applicable ISO, DIN and IEC standard, and are exported worldwide."

UNISIG supplies their products and services to a



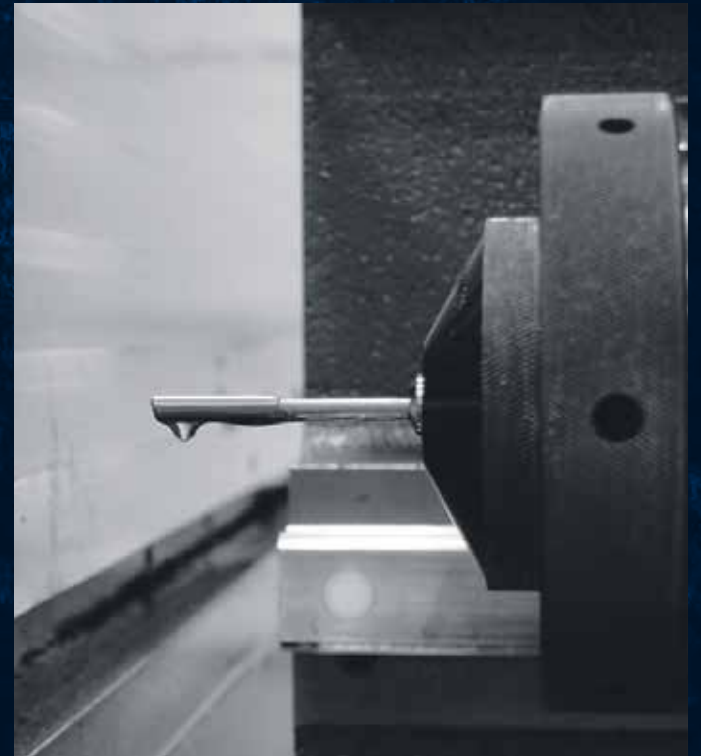


UNISIG is one of the largest producers of deep hole drilling machines and a leader in technology, innovation, support, and service that our customers rely on to be competitive. Our customers include small job shops looking to expand their capabilities, to large OEM's that need to drill millions of holes.

We offer the entire deep hole drilling system – machines, tools, and automation. We provide technical expertise, training, and remote as well as on-site service to help maximize the value of the investments our customers have made.

UNISIG machines are engineered and manufactured in the USA for our global customer base. Our machines can be installed and supported anywhere in the world. We have installations in the Americas, Europe and Asia and provide the technical support and service our customers need to stay productive through the life of the equipment.

We believe our success stems from a very strong understanding of the deep hole drilling process, drilling tools and their applications. We have a long history of achievement, regardless of the technical challenges.



For more information, please visit our website: www.unisig.com
Tel: +49 (0)7125 9687590 | Email: info@unisig.de