

Building & Construction Review



New Factory and Equipment as G-DECK Builds on Production Capacity and Quality

G-DECK, the leading manufacturer of construction safety decking systems, has delivered a £1,000,000 investment plan to increase capacity, reduce lead times and underpin quality assurance as the company continues to grow.

Based in Leicester with manufacturing facilities in the Polish city of Walbrzych, G-DECK has experienced such high demand for its safety deck systems that the company has invested in a second factory and a state-of-the-art laser fibre Kimla Power Cut machine. The investment programme will dramatically increase the company's output capacity, ensuring production remains cost-effective and lead times remain short as demand continues to increase.

Ty Wilson, sales director of G-DECK explains: "We manufacture three G-DECK systems – our standard metal decking system, our G-DECK Dual system, which combines our trademark metal decks and patented brackets with scaffold tubing, and our G-DECK Lite system with plastic coated metal legs. Demand is high for all three systems



because they combine high safety standards with ease and speed of installation.

"We are committed to ensuring our customers receive the products they need on site on time so, as we continue to grow, we're reinvesting in the business to keep that promise and maintain the quality standards that have made us first choice for so many construction contractors, housebuilders and scaffolding companies."

The new factory brings G-DECK's total manufacturing operations to 80,000 sq ft, along with 72,000 sq ft of office, fabrication and stockholding accommodation at the company's Leicester headquarters. The new Kimla Power Cut machine will enable precision cutting of metal G-DECK components up to ten times faster than before, enabling the company to increase the volume of product produced, maintain short lead times and provide exacting standards of quality assurance.

"Having built a reputation for quality, service and innovation," Ty adds, "we are now focused on how we maintain those standards while scaling up production to meet demand. The new factory and machine are now fully commissioned and we have an efficient logistics operation to bring the product to the UK market, enabling us to supply customers quickly and efficiently."

<https://gdecking.com/>

Millcroft to Kick Start 12 Scaffolding Careers



Leading scaffolding company, Millcroft, is to take on 12 young people over the next two years under the Government's Kick Start Scheme, creating opportunities for young people and investing in skills for the sector.

Launched last September, the Government scheme aims to help young people aged 16-24 to take their first steps on the career ladder by generating six-month paid work placements in a trainee role. The new recruits will work a 25-hour week at Millcroft and receive training, along with the potential to go on to a full-time, permanent position.

Millcroft is currently in the process of recruiting the first six Kick Start trainees, who are expected to join the business in March. The company will carry out a full selection process to bring on three trainee scaffolders, a trainee quantity surveyor, a trainee estimator and a

trainee administrator, all of whom will undergo an induction, including health and safety training for those in on-site based roles.

Billy Jones, managing director of Millcroft comments: "As a company, we are committed to training and personnel development and have a long track record of developing young people through apprenticeships. We have our own training centre on site and an excellent staff retention record because we offer every member of the team the opportunity to progress in their career with us."

"We were alerted to the Kick Start scheme by the NASC who are keen for scaffolding companies to take advantage of the initiative to develop the next generation of skills for the sector. It's the ideal solution for us because it allows us to provide young people with the lucky break they need to start a rewarding career, while adding to the team as we continue to serve clients across the construction, transport, industrial and heritage sectors."

The Kick Start recruits will be mentored by experienced members of Millcroft's skilled team and a second cohort of young people will join the company in 2022.

Contact www.millcroft.co.uk



Global Survey Equipment See on page **02**



Hawwoods See on page **04**



IMS Heat Pumps See on page **04**

CABLEFLOR

Eco-friendly, Low Profile Cable Management Floor

Lowest raised floor on the market
Rapid Installation
Made in the UK

Contact us for a free sample
t: 01293 853517 e: info@cableflor.co.uk
www.cableflor.co.uk

EnviroPipe

LOGSTOR
SUPPLY AND INSTALLERS

EnviroPipe Limited is a London-based company that is solely focussed on the supply and installation of above & below ground pipe systems covering a wide variety of applications & sectors.

Although we do install many different types of pipe systems, district heating networks are our specialism.

We have installed countless buried pre-insulated pipe systems and our reputation for quality has led us to forging links with some of Europe's leading manufacturers and suppliers of pipe systems.

Our pipe system installation services include:

- ▶ Water Supply Pipe Systems
- ▶ Pre-Insulated District Heating Network Installation
- ▶ Plant Rooms and Energy Centre Pipework
- ▶ Welded Gas Pipe System Installation
- ▶ Internal Risers and Distribution Pipework
- ▶ Installation Services for Other Pipe Systems
- ▶ UKAS WELDERS available - tested with procedure to BS 17024

EnviroPipe T: +44(0)20 8847 5290 E: info@enviropipe.co.uk
M: +44(0)7894 324 739 www.enviropipe.co.uk



Davison Forklifts Ltd See on page **05**



DCON Safety Consultants See on page **12**



Wonderwall See on page **24**

An Introduction to Global Survey Equipment Ltd



offers everything from auto levels to robotic instruments & GNSS, all of which are under the manufacturing brand of GeoMax (part of the Hexagon group).

The Zoom 90 is the ultimate one-man system with up to 20% more automation performance and extended reflectorless measurement capability. Add to this the X-pad ultimate field software, which is entirely user focused and adopts an ideal balance between clear structure, uncomplicated workflows and impressive functionality.



Within this issue of Building and Construction Review, we have selected one of the leading UK suppliers of survey and safety equipment, Global Survey Equipment (GSE) as the recipient of our Commitment to Excellence Award. Through the company's clear devotion to their customers and for their ongoing commitment to the construction industry Global Survey Equipment (GSE) have been contributing significantly to the ongoing development of the industry.

Established in 2011 by Mark Owen and Matthew McGuire, Global Survey Equipment (GSE) is a constantly growing company within the survey and safety sector of the construction industry. Based in Atherton, Global Survey Equipment are ideally located in the heart of the North West of England, enabling the company to have access to extensive motorway networks and delivering the most efficient delivery service possible for their customers.

Global's four main areas of services they provide are: hire, sales, repair and calibration, although they also provide instrument and cable location training.

GSE offers a broad range of products, all of which are kept up to date with the latest technology. The survey equipment the company supplies are extensive to say the least, and undoubtedly cover all aspects of the surveying process. GSE

The latest addition to GSE's already impressive product range is the GeoMax Zenith 40, the flagship of the GeoMax GNSS receivers. The Zenith 40 is equipped with the latest cutting-edge measurement engine and supporting fast converging precise point positioning it provides the highest level of technology and meets the toughest MIL standards.

GSE also presents a range of detection devices, including Cable Avoidance solutions, Environment Meters, Drain Cameras and Gas Detectors. Cable avoidance products include CATs, Gennys and Accessories. The company also provides a half day C.Scope training course on the intricacies of cable avoidance. Environment Meters include Light Meters, Moisture Meters, Sound Meters, Thermometers and Air Flow Meters, and Gas Detection solutions.

In terms of their calibration, servicing and repair services, the company provides a full instrument calibration, alongside servicing and repairs on all surveying and confined space safety equipment. All of the service technicians at GSE are trained and fully compliant to the highest standards, undertaking regular professional training. Another notable service that GSE provide is as a warranty agent for Dewalt lasers in which, GSE deliver all the calibration and repairs throughout the UK.

Along with detection and survey equipment, GSE supplies reliable and durable health and safety equipment for confined space entry and working at heights. GSE has your health and safety concerns covered, with all products complying with legislative



regulations, you can be sure that you're in safe hands when calling on GSE to secure the safety of your work site.

GSE is not only dedicated to offering state of the art and reliable products, but to maintaining strong, trusting relationships with its clients too. We had the pleasure of speaking with Co-founder Mark Owen, he told us that "GeoMax instruments aim to make the end users jobs more efficient. We pride ourselves on our service and close relationships with clients". It's the attentive attitude that GSE adopts that gives the

company its edge and sets it apart from its competitors. Often, large suppliers might not make the time to work with clients in order to arrive at the most mutually beneficial outcome, however GSE does, making customer satisfaction as significant as profitability.

GSE aims to sustain this attitude as it pushes forward, while also paying keen attention to growth and expansion, ensuring that construction and civil engineering industries are all given the opportunity to benefit from the broad spectrum of products that GSE supplies. The company attends the Hillhead trade show held every two years, exhibiting and showcasing their product range and the way it is reshaping the construction and engineering industries.

To find out any more information or to contact Global Survey Equipment directly, please see the details featured below.

Contact
T 01942 896244
sales@globalsurveyequipment.com
www.globalsurveyequipment.com

The Sawmills
52 Rosedale Avenue
Atherton
Manchester
M46 0DZ



premier[®]
guarantee

WE ARE TECHNICAL EXPERTS

Providing guidance
and assuring quality

STRUCTURAL WARRANTIES AND
BUILDING CONTROL FOR NEW HOMES

PREMIERGUARANTEE.COM
0800 107 8446

MD Insurance Services Ltd is the Scheme Administrator for the Premier Guarantee range of structural warranties.
MD Insurance Services Ltd is authorised and regulated by the Financial Conduct Authority.

Why funding for heat pumps may never be this good again!



Whilst the government has set an ambitious target when it comes to heat pumps (600,000 a year by 2028) but following the recent closing of the Green Homes Grant, there are no guarantees it will look to make other funds available to support homebuilders and renovators with the cost of installation.

In this article, Emma Bohan, General Manager of one of the UK's leading ground and air source heat pump installation companies – IMS Heat Pumps – explores why now is the time to act if you want to take advantage of the only funding available.

IMS Heat Pumps

Established in 1997, with offices in Perth (Scotland) and Sheffield (England), IMS Heat Pumps has been designing and installing domestic heat pumps for over 20 years. The highly experienced team of skilled installers and in-house designers create bespoke systems, designed for the individual needs of the customer.

"No two projects are the same" says Emma. "We work collaboratively with clients from design through to installation, to create a warm

and low carbon home that meets their specific requirements."

"We also believe we set the industry bar high when it comes to delivering outstanding customer experience and responsiveness" continues Emma. "and, unlike most in our industry, we do not take deposits or advance payments which makes us a financially safe choice for clients."

Funding for heat pumps

Whilst big promises were made with the Green Homes Grant (GHG), with vouchers for most people of £5,000, the scheme was recently closed with just a couple of days' notice for new applications.

However, the Domestic Renewable Heat Incentive (RHI) scheme has been around for years and provides post installation support with payments of up to £35k for Ground Source and £11,200 for

Air Source. This scheme is set to end in March 2022 and there is currently no commitment from the government for financial support after this.

"The Domestic-RHI has always provided excellent support levels and is available for self-builders, unlike the Green Homes Grant." explains Emma. "with the government under tremendous financial pressure because of the Covid-pandemic, what happens after the RHI scheme ends is anyone's guess. Now is the perfect time to install".

Financial support might never be this good again!

Industry expertise

IMS has recently added to their team, who operate within a couple of hours radius of their Scottish and English bases. "We are delighted to have taken on three apprentices and a senior engineer" says Emma. "Like most businesses, the start of the pandemic brought some instability, but we are seeing a renewed enthusiasm for

heat pumps on custom-build and renovation projects aided by the buoyant property market.

"Clients come to us specifically for our reputation in the domestic renewable heating market. We regularly attend 'Homebuilding & Renovation' and 'Build-it Live' but as these have been on hold, we have gone 'virtual', recently as Heat Pump Experts for the Homebuilding and Renovating "Ask the Expert" show via zoom. We are also doing Q&A sessions with the Ground Source Heat Pump Association."

IMS Heat Pumps design, supply, install, commission, service and maintain ground, air, and water source heat pumps and under floor heating and radiator systems to create cosy, low carbon homes.

For more information visit www.imsheatpumps.co.uk or call 0114 327 0100



Sustainable wood flooring and cladding

Since being established as a timber merchant in 1975 by the Whiley family, Hawwoods has become renowned in the UK and worldwide as a leader in the wood flooring market, both technologically and aesthetically.

With headquarters in Carnforth, Lancashire, Hawwoods also has showrooms in London and Manchester, as well as business operations in Australia and a further three showrooms in Sydney, Melbourne, and Newcastle. The company also has a growing business in North America with a showroom in New York, plus its first entrance into the Canadian market with a showroom in Toronto. To further its global reach, Hawwoods also works with numerous partners across the world including India, UAE, Portugal, New Zealand and beyond.

"We provide global solutions for the wood flooring

and wood cladding market," explains Paul Moody, Global Marketing and Digital Director. "We offer an end-to-end design and product consultation service to ensure we supply the best possible product to meet the customer's needs, whether that's residential end users, the architecture & design industry, or tradesmen and contractors."

Sustainability in the heart

Sustainability and acquiring materials from sustainably responsible sources are extremely important aspects of the business for Hawwoods. "Sustainability is increasingly vital to us," Paul Moody says. "Today our clients are looking for more and more healthy materials in their specifications, with clear accreditations. At Hawwoods we are continuously taking new steps to improve our actions in this area, and we do our utmost to ensure that

our timber is ethically and sustainably sourced by working only with reputable timber companies. We require an independent certification to verify our timber sources, and this certification is available to our clients on request. Many of our products are certified by key international forestry accreditations."



Introducing HavSeal™

In line with the company's approach to sustainability Hawwoods has recently introduced their own seal of approval called HavSeal™. This ensures that further measures are continuously taken to support sustainability, and the care of the regional ecology is considered by the responsible timber sources. HavSeal is awarded only to products that exceed the already high standards needed to ensure entry into the Hawwoods portfolio.

Hawwoods' Head of Global Product Compliance, Darren Mayes, says: "As regulation and market demands grow for more eco-friendly products we wanted to add our own stamp of approval to products deriving from well-managed sources, considering sustainability, ecology, production and waste. HavSeal not only enhances the profile of each product but also provides a higher-level platform for manufacturers to attain."

Darren Mayes continues: "With the HavSeal criteria products are awarded points according to environmental accreditation, the health of the

material, the production process and the material's waste generation. Products that achieve five points are endorsed with Green Seal of approval, and those attaining six or more points will achieve a Gold Seal."

Building upon its decades of success, Hawwoods is continuing to ensure it stays up to date with customers' ever-changing needs. Through developing its digital tools, accreditation as well as expertise around care, maintenance and installation, Hawwoods ensures it remains versatile and adaptable enough to stay abreast of customers' challenges.

See the details below to find out more information.

T 01524 737000
info@hawwoods.com
www.hawwoods.com/uk

Fulfil all of your forklift needs with Davison Forklift

Davison Forklift was founded by John Davison in the mid-sixties, John grew frustrated at being unable to find a suitable forklift for his plating business, Ablow Pating. Through his frustration, John tasked himself with finding a suitable forklift solution and thus, the company grew under John's guidance and became Davison Forklift Ltd in 1976.

With an impressive wealth of industry expertise, echoed throughout the company's over 40 years of production, Davison Forklift Ltd has established itself as a trusted company and partner for the materials handling sector.

and a full range service and maintenance services. Davison Forklift offers forklifts for all applications with rough terrain and we have telehandler options from our dealership with AUSA."

Davison Forklift is an official UK distributor for Clark, Haulotte, AUSA and Hako "Being predominately a forklift supplier, our target customer base covers all sectors that lift anything from pallets to machinery and all our suppliers are constantly updating their product ranges." Adrian continued, "The Hako Cleaning Machines and Haulotte Access Equipment are



the most recent additions to our product offer."

The Hako range of cleaning machines and Haulotte Access Equipment are an amazing range of products consisting of Hako's: City Sweepers, Pedestrian Scrubber Driers, Pedestrian Sweepers, Ride on Scrubbers Driers and Ride on Sweeper. The Haulotte

"We offer machines that are from world-leading manufacturers and pride ourselves on our level of service." Adrian stated.

Operating extensively within the vicinity of the West Midlands area of the UK, Davison Forklift is ideally situated at the heart of England and provides its services in areas including Wolverhampton, Telford, Birmingham and Coventry.

Maintaining a formidable team comprised of fully trained forklift engineers, Davison Forklift's team are highly skilled and provide servicing, reconditioning, repairs to machines and spare parts, at its extensive on-site facilities featuring its fully equipped workshop in Wolverhampton.

Offering unrivalled services' in terms of quality and customer satisfaction, Davison Forklift strives to provide a comprehensive service for its customers, specialising in the hire and sales of forklift trucks. "We are a forklift hire business." Adrian continued, "But we also offer sales of new and used machines,



Access Equipment provides an equally diverse and innovative product range including: Articulating Booms, Push-Arounds, Scissor Lifts, Telehandlers, Telescopic Booms and Vertical Masts.

Alongside its extensive ever-expanding range of stocked products, Davison Forklift is dedicated to supplying a prompt, reliable and most importantly, helpful service for its customers.

Matched with its large selection of machines and spare parts, Davison Forklift Ltd can provide its customers with a forklift package and solution to meet all of their forklift requirements and provides finance deals to suit all budgets.

Undeniably, there have been many challenges for companies regarding the COVID-19 pandemic and the on-going effects inflicted on all the industry sectors from enduring the strains of lockdowns', furlough schemes and closing or slowing down of their production/operations. "During the initial lockdown we did see a downturn in business," Adrian



continued, "but from July 2019, the market improved dramatically and since then we have seen month on month growth in hires and sales. The second-hand market is particularly buoyant."

A testimony to its clear devotion to its services and customers, Davison Forklift has bounced back from the first lockdown and its future seems bright, noticing a dramatic improvement and a growing dominant presence in the hire and sale of forklifts.

Speaking of the company's future plans, Adrian told us of a couple of new additions for the company and their overall plan to continue to provide its exceptional services. "We have recently moved to our new facility in Shropshire and we are increasing our product portfolio to include Telehandlers and Tractors."

For any further information on the company, please see the details below. Alternatively, give them a call on the number stated.

Contact
T 01902 420123
www.davison-forklift.co.uk



Thermal Effluent Decontamination Systems – The hottest addition to your sewage system



A recent research paper —Pandemic danger to the deep: The risk of marine mammals contracting SARS-CoV-2 from wastewater— showed how COVID-19 in wastewater could infect aquatic mammals, serving as a reminder of the environmental risks posed by unsterilised wastewater.

While the UK's wastewater treatment infrastructure mitigates most of this threat, some buildings require on-site wastewater disinfection integrated into their drainage system. Examples of this include sites working with genetically modified organisms or dangerous microbes, or any site discharging wastewater into environmentally sensitive locations.

Historically, wastewater has been disinfected in Chemical Effluent Decontamination Systems (EDS) using a hazardous and aggressive chemical sterilants. These substances require specialist storage, regular renewal, and manual handling. Once the wastewater has been sterilised in a holding tank, disinfectant neutralisers —which carry their own risks and requirements— must be added before wastewater is disposed of. Alongside the health risks of this sterilisation method, there are other shortcomings. While the procedure eradicates most micro-organisms from effluence, hardier bacteria and viruses may survive. Furthermore, harmful sterilants and neutralisers can remain in the effluence, potentially contaminating downstream watercourses.

A safer and more cost-efficient mechanism lays in Thermal EDS, which employ steam generators to sterilise wastewater by heating it to over 121°C. Installed into the lower floors of facilities, these devices require no manual input and little maintenance. These steam-heated devices are more thorough than chemical sterilisers, capable of eradicating all bacteria, viruses, and microbiology that enter them. Effluence leaving a thermal EDS is not only completely sterilised, but also has no hazardous additives.

Thermal EDS function in a similar way to autoclaves; devices that use heat and pressure to sterilize materials. Astell Scientific Limited, an autoclave manufacturer with a 137-year pedigree, produces steam-heated EDS under the brand name of AstellBio. "We are proud to provide a cleaner and simpler method of decontaminating waste, which is more hassle-free and requires fewer support facilities than alternative methods" said AstellBio's Sales and Marketing Director, Paul Birchmore.

www.astellbio.com

Starting your business safely, every day

Do you need to carry out site inspections, pre-use inspections on plant and equipment or just need to gather data on the go? Then look no further than StartSafe.

StartSafe provides a live, paperless, minimal touchpoint tool increasing productivity by identifying issues and risks in a simple and quick format. The software provides full audit checks on any aspect of a business, overseen by an interactive dashboard. This gives managers (from SMEs to PLCs) a complete and immediate overview of issues, the ability to confirm checks have been undertaken and, ultimately, confidence that employees and business processes are operating safely and effectively.

Health and safety checks become part of the daily process flow with an easy to use, instant reporting tool that reduces administration requirements and streamlines issues to be flagged instantly without the need for a paper audit

trail. Already equipped with a solid foundation of auditing expertise, ongoing development has introduced new features including an offline working mode, geolocating, timed audits, dynamic template builder and exception reporting.

Allowing you to create your own work rules, the Exception Reporting tool can automatically warn a user that a specific fault has occurred, saving the issue as an open fault until it has been resolved. Open faults are collated and easily viewed enabling you to manage resolutions.

The enhanced Dynamic Template Builder with its conditional logic features allows you to tailor the software to your exact requirements from the simplicity of creating yes/no questions to completing a full risk assessment on the go.

The diverse and flexible StartSafe system will allow you to

create-inspect-report-analyse what you need through the intuitive and user-friendly system. Our clients include schools, medical facilities, manufacturing sites, airports, retail and advertising agencies – showing just how versatile the software can be. Get in touch on 0330 223 6260 to discuss how we can help take your business to the next level of auditing, quality control and compliance.

Contact
T 0330 223 6260
adam.breathwick@startsafe.tech
www.startsafe.tech



THE BULMER BRICK & TILE COMPANY LTD

The Brickmaker's Tale
By Peter Wilson
Order your copy here today

Bulmer bricks are made from the finest London Clays, dug from our seams almost continually since Tudor times. All Bulmer bricks are hand made, using traditional methods of making, drying and are fired in a coal burning, down draught kiln. We are a small family business continuing the traditions of brickmaking on this site dating back to the Middle Ages.

We work on large projects for the National Trust, English Heritage and Historic Royal Palaces, but are just as proud of some of the small private work undertaken by individuals.

The Brickfields, Bulmer, Sudbury, Suffolk CO10 7EF
Tel: 01787 269232
Fax: 01787 269040
Email: bbt@bulmerbrickandtile.co.uk

TUBOSIDER
SINGLE STORE STORMWATER TANK SYSTEMS

Designed to fit.

There's no 'one-size-fits-all' at Tubosider. Whatever your project needs, our single store stormwater tank systems are designed to suit your discharge rate, return period, site dimensions and project budget.

Call us today to find out how
01744 452 900 | tubosider.co.uk/singlestore

Astell Bio

Autoclave Everywhere

The AMA240 Compact Ecofill top-loading autoclave is easily moved between rooms on its casters. It also reuses water from its self-contained water supply, so doesn't need a direct water supply or fitted drainage.

Astell Scientific Ltd. produce customisable autoclaves for every situation. Talk to us about your autoclaving needs today.

Astell.com

BIOLOGICAL MATERIAL IN YOUR WASTEWATER?

STERILIZE IT WITH **Astell Bio**

MICROORGANISMS
PRIONS
BIOLOGICAL MATERIAL
VIRUSES

DOWN DRAINS
DOWN TOILETS
DOWN SHOWERS
DOWN SINKS

NOTHING BIOLOGICAL LEAVES STILL FUNCTIONING

An AstellBio Effluent Decontamination System can sterilize your wastewater and sewage without the need for chemicals.

FIND OUT MORE AT
ASTELLBIO.COM

Hauraton high capacity surface drainage installed at Vertex Business Park, Bristol



The Vertex Business Park is a 4.8 acre site located in the Emersons Green Enterprise zone. Being just four miles from junction 19 on the M4 motorway, the 11 warehouse/office complex has tree lined boulevards and generous landscaped areas incorporating dedicated car parks, concreted access and hard standing designed to handle HGV traffic. With such a large concreted area an effective surface water drainage system was essential.

Having supplied high capacity surface water drainage channels for hard-standing areas at numerous distribution centres throughout the UK, Hauraton were confident their RECYFIX® HICAP® high capacity channels would comply with the stringent specification asked for by the contractors.

Three sizes of RECYFIX® HICAP® F-2000, 3000 and 5000, with a loading category Class F900 (900kN) were used to drain the HGV hard standing and car park areas at the Park. All the sizes supplied had fixed ductile iron, 14mm

open slot inlets finished with KTL, a rust resistant coating. By affording a superior overall hydraulic performance, the 216 metres of channel installed, provided a water storage volume totalling 8,904 litres.

The HICAP® system generally allows engineers and contractors' flexibility in layout by reducing number of channel runs normally required to drain a given area. This can mean less underground excavations, materials and vastly reduced installation time. Usually as there are fewer runs required, the surfaces strength is not compromised whilst future maintenance and cleaning will also be reduced.

With laden HGVs weighing up to 44 tonnes, manoeuvring trucks impose an enormous twisting stresses on the surface drainage components. So not only must the area be efficiently drained, the installed system has to withstand the twisting forces exerted by truck wheels.

Cat Jones, the Hauraton Project Manager, was certain the company's high capacity channels chosen for this job would easily match the specification demanded by Kore Construction; "The RECYFIX® HICAP® F channel components are made from specially formulated tough RECYCLED polypropylene (PP) and as each one metre channel used, including its ductile iron inlet, weighed less than 25kg it allowed one-man-lift, so greatly simplified the handling and logistics for the contractor who found the combination of a tough PP channel and ductile iron slot inlet highly resisted to site damage during installation".

For Case Study go to www.drainage-projects.co.uk

Hauraton channels drain Blue Badge scheme parking bays at RHS Wisley

On 10th June 2019, Alan Titchmarsh, MBE, opened the first phase of The Welcome Building and surrounding landscape at Royal Horticultural Society gardens, Wisley, Surrey. The new facility has transformed the experience for visitors to the gardens with new buildings including a spacious arrivals hall, café, shop, plant centre and a 100 seat restaurant. There are now three large car/coach parks including Blue Badge scheme easy access bays for visitors in park two.

One hundred metres of Hauraton RECYFIX® PRO 100 channel system, fitted with FIBRETEC® C250, 9mm HEELSAFE slot gratings, was used by groundwork sub-contractor GPB Construction Ltd to drain the asphalted Blue Badge parking bays for visitors. The channels were installed between the bays and the path leading to the entrance of the new arrivals hall.

Since its launched in February 2010, the RECYFIX® PRO 100 surface water drainage channel, featuring the innovative FIBRETEC® grating, has been specified and successfully installed in numerous United Kingdom drainage projects, including rail station platforms, public squares, shopping malls, sports-fields, tartan running tracks and many other commercial and private applications.

The material, PA-GF used to make the FIBRETEC® grating, was especially developed by Hauraton; the tough, UV resistant, fibre reinforced moulding offers high stability and huge strength for its weight. Complying with loading category Class C250 (BSEN 1433) the grating can easily take the weight of cars and commercial delivery vehicles. The design is a



real innovation as its non-corrosive material provides a visually appealing surface finish that retains its black colour.

The FIBRETEC® C250 HEELSAFE slot grating was specifically designed by Hauraton R & D engineers to enhance the flow of water into the channel.

The slots are super smooth, elliptical openings with the moulded bars having slightly raised triangular bosses along their outside edges. As well as providing an elegant appearance, the feature ensures surface water is directed into the slots. This configuration also helps eliminate any cross-flow over the grating.

The RECYFIX® PRO 100 channel component is made from 100% recycled polypropylene (PP). The six sizes offered are 160mm wide and range in height from 75mm to 250mm with the FIBRETEC® grating factory fitted on all models. As the largest unit is only 5.8kg, the channelling is easily handled and quickly installed on site.

www.drainage-projects.co.uk

Two Hauraton surface drainage systems installed at Maltby Academy School, Rotherham



The Maltby Academy School to the East of Rotherham, just off the A631, was established in the 1930s with additional building added in the 1960s and at the start of this century. The school has expanded and now offers up to 1200 student places with an age range of between 11 and 19 years.

Early in 2012 it was decided refurbish the older building and build a new open plan business / enterprise centre and sport science block. In addition, the old gymnasium was to be converted into a performing and creative arts facility.

The £10.9 million contract for the re-development of Maltby Academy was awarded to BAM Construction of Leeds, in June 2012. The site was fully operational by September 2013, the start of the academic year, with full completion shortly afterwards. Architects for the new buildings were Bond Bryan, Sheffield office.

With the site being quite flat, and the old and new buildings' surrounded by paved and

asphalted surfaces, it was essential rainwater is drained effectively. Two Hauraton systems were chosen to drain surface water: RECYFIX® PRO and RECYFIX® SLOTTED channels. A Hauraton RECYFIX® PRO 100 channel system, fitted with FIBRETEC® C250, HEELSAFE 9mm slot gratings, was used to drain the asphalted yards and car park. Since its launched in February 2010, the RECYFIX PRO surface water drainage channel, featuring the innovative FIBRETEC® grating, has been specified and successfully installed in numerous United

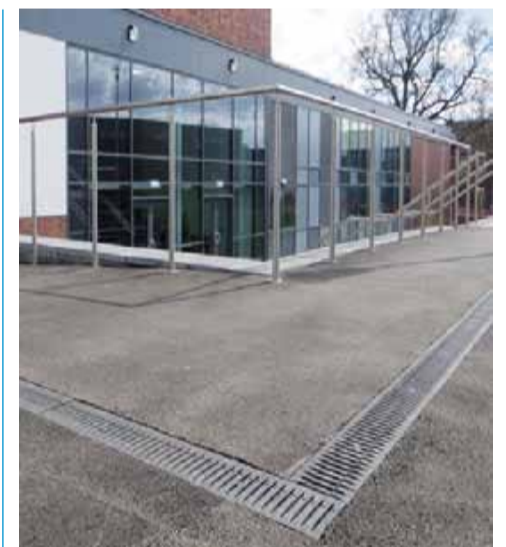


Kingdom drainage projects, including rail station platforms, public squares, shopping malls, sports-fields, tartan running tracks and many other commercial and private applications.

The material PA-GF, used to make the FIBRETEC® grating, was especially developed by Hauraton; the tough, UV resistant, fibre reinforced moulding offers high stability and huge strength for its weight. Complying with loading category Class C250 (BSEN 1433) the grating can easily take the weight of commercial delivery vehicles. The design is a real innovation as its non-corrosive material provides a visually appealing surface finish that retains its black colour.

The FIBRETEC® C250 HEELSAFE grating was specifically designed by Hauraton R & D engineers to enhance the flow of water into the channel. The slots are super smooth, elliptical openings with the moulded bars having slightly raised triangular bosses along their outside edges. As well as providing an elegant appearance, the feature ensures surface water is directed into the slots. This configuration also helps eliminate any cross-flow over the grating.

Aesthetic demands meant the surface water drainage for the paved walkways had to be as unobtrusive as possible yet fully meet the drainage requirement; this was achieved by installing Hauraton RECYFIX® STANDARD SLOTTED CHANNELS fitted with symmetrical galvanised steel covers. Once installed this system provides an unobtrusive, narrow line of slots in the paved surfaces.



The RECYFIX® channel component is made from 100% recycled PE-PP. The six sizes offered are 160mm wide and range in height from 75mm to 201mm with the FIBRETEC® grating factory fitted on all models. As the largest unit is only 4.6kg, RECYFIX PRO channelling is easily handle and quickly installed on site.

Colin Taff, Hauraton's Project Engineer comments; "Being particularly suitable for school yards and play grounds, our RECYFIX® PRO channels' with their black FIBRETEC® gratings' were chosen for this project as the grating's smooth appearance blended in well with the asphalted surfaces".

For full Case Study go to www.drainage-projects.co.uk

Hadspen Quarry Ltd

Hadspen Quarry Ltd is a supplier of British Blue Lias Limestone used traditionally for walling, Hadspen Quarry has now launched a range of Blue Lias flooring, worktops, wall tiles, cobbles and much more. Excavated directly from one of their two quarries in Somerset, Hadspen Quarry is a family run business with a keen eye for attention to detail ensuring you get the quality needed for your project.

The versatile and luxurious qualities of British limestone means it can be combined with an array of other materials throughout any project to create spaces that are unique, organic and well designed.

Natural stone can be used as a finish not only on the exterior as a walling or cladding stone but also lends itself incredibly well to interiors.

It never goes out of style and the recent boom in the return to the use of natural British stone is the proof in the pudding. Hadspen Quarry's range of Blue Lias Flooring, Wall Tiles, Flagstones, Walling Stone and Cobbles have been used extensively at the prestigious new development The Newt In Somerset, as well as other projects both big and small. They supply and deliver custom-made Blue Lias flooring for customers across the UK.

For a rustic cottage look the leathered blue lias is a good match for time worn flagstones, while the flamed & brushed finish is a new flagstone look. For a modern aesthetic the two honed options, either our marble bed or fossil bed of Blue Lias provides a contemporary finish while retaining the classic timeless look of a British Limestone floor.

If you need expert advice to help choose the perfect stone for your project, don't hesitate to get in touch with the team on 01963 351205 or email info@hadspenquarry.co.uk



Stairkraft: Taking your Home to the Next Level

Transform your home with a luxurious and elegant floating stair

Stairkraft are pleased to announce the launch of their innovative Faux Cantilever Stair. Make your stairs a unique and individual feature, enhancing your home and adding value to your property.

They have developed an ingenious and inspired system of support, which eliminates the requirement for either, a substantially built support wall, or incorporation of any additional steel support frame; normally a prerequisite of a cantilever stair.

Furthermore, for prospective clients refurbishing and replacing an existing stair, the faux cantilever can be installed without the mess and disruption caused by the removal of the existing plaster finishes, making for a more timely and hassle-free installation experience.

Together with the obvious time benefit, the Faux Cantilever stair can be manufactured and installed for a significantly lower price than that of a conventional cantilever stair.

Stairkraft offer a complete service, from design to installation. All stairs start by being created in Stairkraft's own Design studio, utilizing the latest 3D CAD systems. They are manufactured in their own purpose-built factory in Sheffield, employing the latest technology and engineering whilst still embracing traditional craftsmanship. They are then installed by Stairkraft's skilled operatives.

The stairs are available in a range of materials, styles and finishes, including glass treads.

Please contact info@stairkraft.co.uk for your free, no obligation quotation.



AR Architecture is an award-winning practice of Architects and Interior designers with offices in London and Porto.

Founded in London's Hampstead 10 years ago, the practice now gets involved in a broad range of high-end residential, commercial and hospitality projects.

We provide full range of Architectural services throughout all RIBA work stages and act as the Lead Consultant, coordinating design input of the other members of the team. Our Interior Design, offered as an option in a package with Architecture, delivers an exceptional value for money.

Working closely with the Clients whom we regard as our co-authors, we provide full transparency on all aspects of the project and help to maintain control over the cost and the programme.

In Portugal, together with our local partners, we offer turn-key solutions from an investment opportunity to a completed project.



AR architecture
Your Local International Architects



COMMERCIAL | HOSPITALITY | RESIDENTIAL

RIBA Chartered Practice

www.ar-arch.co.uk
Tel: 0207 209 2851
E-mail: info@ar-arch.co.uk

Heart Pods

Heart Pods based in Coventry design and build a wide range of Pods, Shepherd Huts, Garden Studios and other additional outside spaces.

Most recently, they launched their latest range in Garden Studios. These high-quality flexible spaces can be installed and ready to use very quickly.

Available in three sizes and specifications, they are built in a contemporary design with floor to ceiling windows and doors and are fully lined and insulated.

Whether you need office space, a gym, playroom, bar,

man cave or somewhere to escape and relax, the Garden Studios are a great alternative to an extension and at just under 2.5m high, in most cases, no need to apply for planning permission.

The Garden Studios are a great addition to the fantastic Pods and Shepherd Huts already on offer at Heart Pods. You can see the entire range on their brand new website at www.heartpods.uk.

To arrange a virtual show-round, call 01676 540333 or email info@heartpods.uk.



heartpods www.heartpods.uk
Check out our new website

PODS, GARDEN STUDIOS & SHEPHERD HUTS FOR SALE

- ♥ GLAMPING
- ♥ HOME OFFICE
- ♥ DINING
- ♥ GYM

TRY BEFORE YOU BUY
Glamping Staycations at The Heart

T. 01676 540 333 | E. info@heartpods.uk
Heart of England Conference & Events Centre
Meriden Road, Fillongley, Coventry. CV7 8DX

heart of england
Conference & Events Centre

[KEDEL] TRADE
ECO-FRIENDLY PLASTIC PRODUCTS

01282 861325
sales@kedel.co.uk

RECYCLED PLASTIC
Building & Construction Materials

Rot-proof, low-carbon building materials that are easy to work with and require zero maintenance or upkeep throughout their entire lifetime.

Oswald Street, Burnley, Lancashire, BB12 0BY

Maintenance free solutions for decking and landscaping



Did you know that many real wood decks require full replacement within seven years of installation? This coupled with annual maintenance costs for labour and materials can make your wooden deck very expensive in the long run and if you are doing it yourself it's going to use up a lot of your time. Time that could be spent enjoying your garden instead.

A Gardening Express survey found that homeowners change their patio or deck six times over the course of their gardening lifetime at a cost of around £9000.

Fortunately, if you are installing or replacing your deck there is a solution in the form of recycled plastic decking. A long-lasting alternative to wood.

Utilising plastic that would ordinarily be sent to landfill or incinerators, Kedel turn it into long lasting, maintenance free landscaping materials, with the look and feel of real wood but that can last a lifetime, so you just do the job once!

The slightly higher initial price of recycled plastic wood is quickly recovered through savings on maintenance or replacement, resulting in lower lifetime costs when compared to real wood designs. This initial outlay can be recouped in as little as 2 to 5 years.

Recycled plastic decking is splinter free, frost proof, shock proof, resistant to most chemicals and impervious to fungi and water.

Kedel Marine Decking Boards can be used for various landscaping projects and are ideal for boardwalks, pontoons, jetties, access ramps and fishing pegs.

For more information on any of Kedel's products and services, contact us today for help and advice.

Contact
T 01282 861325
info@kedel.co.uk
www.kedel.co.uk



Golden Gardens LANDSCAPE PROPERTY MAINTENANCE

- As seen on TV
- Porcelain patio specialists
- Gardeners world gold medal winners

01908 561910
www.golden.garden

Frametech Essex Ltd



At Frametech Essex Ltd we pride ourselves on our knowledge on all things structural carpentry. Established in 2009 by one of our company directors, Andy Perkins, Frametech have delivered a high standard of work on countless projects across the south of England. We have worked alongside many of the UK's top timber frame and engineering specialists.

In the current climate, where the speed of on-site build is key, we have helped many construction companies in their choice of using timber engineered builds over traditional block and brick methods. At Frametech, we truly believe this is the future of construction. Not only does it increase the on-site production, but it is also a natural and sustainable material with higher insulating properties.

Would timber frame be right for your build? We have worked on many projects large and small and would always look to advise people where we can on the potential benefits of timber engineered products. Whether it be prefab timber frame panels, pozi-strut joists or trussed rafter roofs, we work closely with several engineered timber manufacturers to ensure we provide all our clients with all of their project requirements.

For more information please visit our website at www.frametech-essex.co.uk

A developer's first steps in to Passive Haus, path finding into a helpful community...

First steps

The Passive Haus Institute had a huge influence on developing the company's vision and to show the institute the companies support is one of the Pure Haus goals. The principles to work to were very consistent with the company's ethos for sustainability, quality, health and comfort. Taking pride in your home and local community was at the heart of our long term vision; Building Stylish and Sustainable Communities.

Values Driven

After committing to the goal of reducing the carbon footprint of the built environment the affect was so substantial Pure Haus found themselves promoting Passive Haus to anyone who would listen to them, there was a new buzz within the company. The first challenge was naming the company.... Pure Haus emerged the winner. Implying a German inspired house builder with a goal of making the world a cleaner, healthier place. The second goal was to identify the people who can help remove

assumptions from the equations and replace them with facts.

Working with like minded people

Aligning with like minded people, who demonstrate this enthusiasm by going above and beyond our expectations, is the driver of this business. Our Builders have taken time to travel and see other sites under construction to learn a new skills, to say they are excited about timber framed housing and its potential would be an understatement.

Working to this standard is an opportunity that's rare; for them to be given a chance to do something worthwhile, get paid, and leave a legacy appealed to them!

Future challenges

Having secured relationships with financiers and landowners the biggest challenge moving forward is to have the operations of the company scaled up to match the ambition of the company.



Contact www.purehaus.co.uk

www.AlterSupplies.co.uk 01505 842201

We are The Fencing Experts

High Security Fencing Agricultural Stock Fencing
Landscaping & Garden Supplies Decking & Fencing

Tree roots causing problems – Tree Radar Scans GPR (Ground Penetrating RADAR) to detect roots

"Are there tree roots there?" The question often asked when trees are located near existing structure/surface or a proposed development. Often if not sufficiently well evidenced leads to a planning rejection, appeals or the use of alternative expensive construction methodology.



Historically the approach to answering the question often relied on a perfect circle of twelve times the diameter as set out in BS5837:2012, using educated guesswork based on the site constraints or more invasive methods such as air excavation.

But in modern Arboriculture are these methods outdated? The answer is yes!

The Tree radar unit is a specifically designed to detect tree roots under almost any surface. Using either a 900Mhz or a 400Mhz head, it can go deep to find general root mass or shallow to find roots down to 1cm depending on the soil type. Each scan can be displayed in multiple ways and can be scaled into CAD to aid in design and satisfy the planners. Call the office for your next project near tree roots.

www.barnesassociates.co.uk

BARNES associates

INSPECT MANAGE IMPROVE

T 01423 322 371
E info@barnesassociates.co.uk
W barnesassociates.co.uk

- TREE SURVEYS FOR DEVELOPMENTS (BS5837)
- ADVANCED TREE ASSESSMENTS
- BS5837 TREE SURVEYS

- Specialists in tree safety risk and stability
- We specialise in safe development techniques near trees
- Root detection & Mapping

Liquid Tank Spreader

As one of the UK's leading roofing and waterproofing specialists, Rubberseal are continuously adapting to changing times and searching for new, innovative ways to stay at the forefront of the roofing industry.

And with that in mind, we are proud and excited to present you with the Liquid Tank Spreader by Rooftop Equipment.

You deserve the most effective tools for the job, so as the sole official distributor in the UK and Ireland for this game changing liquid applicator, we're thrilled to tell you more...

So what actually is it? Well, in a nutshell, it's a mobile tank spreader for applying liquids and adhesives onto a range of substrates including metal and asbestos profiles.

Tools by definition, are supposed to make your work easier. But if you're using inferior rollers, you're undoubtedly wasting labour time, and money!

- ▲ Save Money – Cover more square feet using fewer people
- ▲ Increase productivity – Finish each job quicker and get to the next one faster
- ▲ Eliminate downtime – trust your tools to work like they should – all day, every day

Suitable for use with most liquids, the Liquid Tank spreader can be used to provide an even, consistent coverage with membrane adhesives or liquid coatings.

Other benefits include;

- ▲ No overspray
- ▲ Limits waste
- ▲ Easy refills
- ▲ Simple clean up

Contact us today to find out more!
T 01290 559333



Plants and Sundries for the Trade



- Over **1500** lines of trees and shrubs on display from starter plants to specimen sizes.
- Young bedding and basket plants for which we are historically known.
- Ideal for growers, independent garden centres, landscapers and garden designers, local authorities, landowners and stately homes.
- Nationwide coverage and delivery available. (ask for full details)

The largest horticultural "One Stop Shop" in the UK

Hedging/Topiary/Shrubs/Trees

Hedging - Includes Privet, Leylandii, Griselinia & Laurel

Topiary - Buxus, Ligustrum & Cupressocyparisa in a range of shapes and sizes

Laurus Nobilis - Bay trees

Shrubs & Trees - Rhododendrons, Azaleas, Cordylines, Phormiums, Pieris, Tropical Plants, Olives, Palms, Trachycarpus, Native trees, Mediterranean Plants, Specimens and much more.



HUGE SELECTION OF SHRUBS FROM 3 LITRES - 15 LITRE

Alpines & Perennials - 9cm liners and 1, 2 and 3 litre pots.

Seiont Nurseries - Plugs and liners of Ferns, Grasses, Cordylines, Phormiums, Shrubs and Herbaceous - over 200 main lines in stock.

(Non-stock items ordered direct with Seiont by a Friday can be collected at Four Oaks Cash and Carry the following Wednesday)

Young Plants/Added Value

Young Plants - Bedding, Basket, Patio plants. Pack bedding & Vegetables.

Added Value Lines - from April onwards. We will have a superb range of Hanging Baskets, Planted Patio Pots, 13cm potted Zonal Geraniums, Fuchias, Osteospermums, Marguerites and Standard Fuchias in 10 litre pots.



Sundries/Garden Ware

Sundries - Wicker Planters, Basket Plants In Plugs, 10cm & 13cm, Huge Range of Compost & Fertiliser, Coco Liners, P9 Liners and Metal Planters.

Garden Stoneware - Planters, Water Features Troughs, and Bird Baths.

Yorkshire Flowerpots - Frost proof Terracotta.

Draper Tools - a range of Professional Tools.

LARGE SELECTION OF PLANTED HANGING BASKETS and PATIO POTS (can be made to order)



FOUR OAKS CASH & CARRY 5 miles from J18 - M6
Longshoot Road, Lower Withington, Nr Macclesfield, Cheshire SK11 9DX
☎ 01477 571797 Fax: 01477 571314
✉ marlon@fouroaks-nurseries.co.uk www.fouroaks-nurseries.com



Monday to Friday: 8am - 5pm (November - January 8am - 4:30pm) Saturday: 8am - 12 noon (Closed Saturday Weeks 36 - 46 and Bank Holidays)

Public Sculpture



Art for the public to enjoy has taken many forms from the Pyramids and Sphinx in Ancient Egypt with its quasi religious and Royal elements through the classical Greeks and Romans setting the standard in the body beautiful of gods and goddesses and their triumphal depictions of heroes both mythical and real.

The renaissance was really the next wave to influence public art and again religion was the main source of inspiration with Michaelangelo's David and La Pieta probably the best known.

This heavily influenced the next movement which was a combination of the effects of the grand tour with many famous collections both private and public built up combined with the surge of the Georgians and Victorians commemorating the heroes of the day with possibly Nelson's Column being the most famous.

It was then that nonrepresentational art emerged with The Eiffel Tower in Paris being the most obvious example followed in yet another direction by Henry Moore and Barbara Hepworth making Abstract a controversial for some and popular for others, break from tradition.

The present day is heir to all these influences which pull in so many different directions and is spread like a feast to be picked over and chosen from with discretion and taste.

Peter de Saumarez director of ArtParks International and its massive Sculpture Website, says that it is fascinating to see such a variety of different works and styles that are being chosen to embellish Public spaces, Hotels and Offices where it is essential to have only the best.

Specifiers, Interior Designers, Planners seem to find nearly 500 categories of thousands of sculptures from all over the world an easy and ready source for inspiration, selection and commissioning Art for today.

www.artparks.com



DCON
SAFETY CONSULTANTS

Leaders in Built Environmental Safety and Health and Wellbeing Consultancy

Consulting on various aspects of project design, constructability and operational lifecycle matters for local and global commercial clients.

CONTACT US:

DCON Safety Consultants
Suite 5, Fitzwilliam Square East, Dublin 2
Email info@dconsafety.com
Phone +353 (0)1 611 155

www.dconsafety.com

Award in Excellence Winner 2020



DCON Safety Consultants business intention is to consistently ensure that client's best interest and statutory conformities are secured. Our greatest resource is our exceptional team of technical construction and safety consultant partners. Our consultants and alliances with other key individuals and organisations enable us to provide a broad brush level of support to clients in all divisions of design, planning and construction safety. We will remain relentless in our support of safe outcomes aiding our clients to realise their visions."



DCON Safety Consultants Limited has a suite of wonderful clients who reuse their services time and again. Diarmuid remarks that while their pipeline remains strong, the Covid 19 and Brexit impact will play their part going forward. The reactivation of public sector works in residential and infrastructural sectors will present future opportunities for the business.

The main service provided by DCON Safety Consultants Limited is Project Supervisor for the Design Process (CDM Advisor Plus), Pre-Planning Compliance, Safe Design Adherence, Health & Safety Strategy creation and Expert Witness. Regardless of project size or complexity, DCON Safety Consultants

We are proud to announce that DCON Safety Consultants Limited has received our Building Products & Services Award for 2020. Diarmuid Condon, Owner and Managing Director of DCON Safety Consultants Limited noted his delight in having been considered for this award. Diarmuid reflects on the broadband definition of award-winning as having won a prize in recognition of quality.

"From our point of view here at DCON Safety Consultants Limited, award winning means so much more than just the receipt of a prize. Our ambition and drive continues to be quality based on the priority of high level specialism services offering informed, intelligent advice, senior project resource allocation and compliance assurance.



DCON Safety Consultants Limited benefits from a strong understanding of the potential risks within the built environment sectors they are engaged in. Our model of service enables an over the shoulder compliance and best practice support means to be provided that seeks to meet or exceed their client's expectations.



Limited maintains a wealth of expertise in the built environment and generates distinctive and innovative ideas born out of traditional construction service inputs and outputs.

Strategically supporting a positive planning decision is what sets DCON Safety Consultants Limited apart from their competition. "Our Construction Management Plan (CMP) offering provides clients with the means to demonstrate a commitment to safety in overall planning, coordination and control of a project from construction commencement to completion." Diarmuid continues, "These safeguards seek to support the obligation placed on a client to produce a safe, functional and financially viable project."



Diarmuid uses his extensive network of contacts to recruit precisely the right person to protect his clients' interests and uses his unique perspective to encourage, support and mentor the abilities of his colleagues. Diarmuid is an integral part of the company and ensures that it excels in providing services to its clients, and displays exceptional achievement designing and executing

strategic safety plans and systems.

DCON Safety Consultants Limited maintains an extensive client list which includes: public sector departments, corporate owners, real estate developers, main contractors, design professionals and infrastructural bodies. A Quantity Surveyor by qualification, Diarmuid consistently demonstrates his extensive knowledge and expertise including prior to setting up DCON Safety Consultants Limited, Diarmuid was responsible for Safety, Health & Quality consultancy services in Ireland for a global project management/cost management consultancy. "I was afforded the opportunity to hone my technical and soft skills while working on some of Ireland's most recognisable projects." Diarmuid stated.



"I would like to take this opportunity to thank Building and Construction Review (Midlands) Limited for this award look forward to our future publications together." Diarmuid concluded.

Contact
T +353 (0) 1 611 1556
www.dconsafety.com

New distributorship for Cinderella Eco Solution

LeeSan has become the Sole distributor for Cinderella Eco Solution incinerating toilets. 4 different toilets will be available very soon running on Propane Gas or 240V.

Cinderella Motion represents an entirely new concept for waste handling in Off-the-Grid locations, Marine craft, mobile homes and recreational vehicles. It is now possible to get rid of toilet waste in a hygienic and simple manner. The end product is just clean ash. The toilet may be used around 70 times before emptying is required. Cinderella Motion is a further development of the

popular Cinderella incineration toilet currently installed by over 60,000 users worldwide.

An incineration toilet is a toilet in which waste products, urine and excrement, are incinerated at a high temperature, leaving only an insignificant amount of ash.

Available around the world for decades, incineration toilets are a commonly used alternative in mountain cabins, remote areas, tiny homes, off-grid structures and other residential and commercial applications without easy access

to public utilities.

Since incineration toilets do not require the installation of a water supply or costly septic systems, and do not demand ongoing and messy work to process waste, their slightly higher unit price is heavily offset by lower maintenance over time, providing a substantially lower total cost of ownership than other solutions, both in terms of money and headache.

T +44 (0)1295 770000
www.leesan.com



LEB Construction celebrates Pantycelyn Halls project



Leading Ceredigion contractor, LEB Construction has completed a significant package of works on the high-profile £16.5m project to restore the historic Pantycelyn Halls of Residence at Aberystwyth University.

Morgan Sindall Construction appointed LEB Construction as one of its main subcontractors on the restoration project to deliver several packages of works including extensions & alterations, groundworks, roofing, cladding and plastering.

The team was involved in the design, fabrication and installation of the stunning architectural profiled cladding to the aluminium glazed reception area. The complex installation required significant skill and commitment to ensure accurate and timely completion.

Dale Harris MCIQB AssocRICS, project manager at Morgan Sindall Construction said: "On such a high-profile project on a national asset, we needed a skilled team which could work to our high standards, respect tight deadlines and adapt to any challenges the projects unearthed.

"We worked in collaboration with LEB Construction to resolve any issues that arose with a solution that worked for all parties. As a company they share the same high standards as Morgan Sindall Construction and have a commitment to getting the job done, even in challenging conditions.

"This meant we could trust them to complete unforeseen additional works that naturally occur when operating in an old building."



Luke Baker, founder and managing director at LEB Construction explains: "This was a significant project for us and we're proud to have been involved in such a historically significant project.

"Our team worked well with Morgan Sindall Construction to overcome the challenges posed by the ongoing coronavirus pandemic and worked hard to maintain safe working delivery throughout the project."

If you have a project you would like a quote for, please get in contact either by phone on 0845 506 5202 or email sarah.reay@constructionmarketingexperts.co.uk

Harlequin Floors

Harlequin is the world leader in advanced technology floors for the performing arts. Established as the industry choice for architects, building contractors and the world's most prestigious dance and performing arts companies, Harlequin's experience and reputation are founded on the design, manufacture and supply of a range of high quality portable and permanent sprung and vinyl floors, ballet bars and mirrors for dance studios and performance spaces.

Forty years after its creation, Harlequin remains as global leader in its field with offices in Europe, The Americas and Asia Pacific. Specifying the correct dance floor makes an important contribution to the safe performance of dancers without the risk of slips and falls or longer-term stress injuries.

A good dance floor instils confidence in dancers to give full expression to their creativity, safe in the knowledge the dance floor will offer a consistent response. Harlequin Floors have developed floors specifically for dance, offering the exact requirements needed for varying genres of dance, which commercial grade, industrial and sports floors cannot.

Research in recent years has identified a correlation between the consistency of dance floors and injuries incurred by dancers. When specifying a floor for dance, using general flooring or sports floor standards will not ensure the right floor is installed. Only a floor developed specifically for dance will do. There have been some high profile examples where floors have had to be replaced by a dance company after the building is complete because the floor was not considered fit for purpose by the dancers using it.



For all your performance floor needs, please contact our technical team:

T +44 (0)1892 514888
enquiries@harlequinfloors.com
www.harlequinfloors.com




PREMIER SEED®

A premium range of quality blends for Landscape & Amenity areas.

- Premier Landscape & Lawn
- Premier Shade Tolerant
- Premier Drought Tolerant
- Premier Slow Grow
- Premier Roadside & Embankment



Discover Premier Seed as part of your Landscape.

premierseed.co.uk - Tel: 01522 246491



GEORGE BARNSDALE
 Est. 1884

Your job is to create something beautiful, and our job is to help you do it.

Whether you are looking for solutions for a new build or a refurbishment, our timber windows and doors are expertly designed to meet the most demanding design and performance specifications whilst remaining sympathetic to the building's architecture and surroundings.

t. 01775 823000 w. georgebarnsdale.co.uk
 e. enquiries@georgebarnsdale.co.uk



Forest to Factory



George Barnsdale is delighted to be launching the next in its series of CPDs – Forest to Factory – the evolution and revolution of timber fenestration starting on 29th April at 1pm by webinar. The CPD takes an in-depth look at timber from seed to window and beyond and helps explain why windows from Victorian times have outlasted many made in the 90s and 2000s.

It also explains:

- ▲ how to select the right timber from the right sources
- ▲ modern methods of treatment
- ▲ correct storage and engineering
- ▲ discover why heartwood beats sapwood
- ▲ how softwood can last as long as hardwood
- ▲ how different design and manufacturing methods impact on longevity
- ▲ why timber lasts twice as long as plastic
- ▲ what makes it so eco-friendly
- ▲ and lots more...

Any architects, specifiers or other building/construction project teams wishing to sign up to the first webinar on 29th April can do so by visiting www.georgebarnsdale.co.uk/cpd



insurance

LIABILITY . FLEET . PLANT . BUSINESS PREMISES . DIRECTORS . CYBER

Have you had a Covid-19 Insurance review?
 if not, you could be paying too much for your insurance...or worse still, you may not even be covered correctly.

Speak to us today for a free, independent review

premier
 insurance consultants

01204 388644
premierinsuranceconsultants.co.uk

South West Lighting Protection

South West Lightning Protection was formed in 2014, by Gary Libby, who has over 39 years' experience within the lightning protection industry. South West Lightning prides itself on providing a high level of service to our customers, and ensuring works are carried out on time and within budgets. The company has full in depth knowledge of current Lightning protection standards,



and can design, install, and maintain all lightning protection systems, complying with BSEN62305, older BS6651 systems, and alternative Early Streamer Systems.

In conjunction with our partners we are able to provide surge protection designs and installation, which enables us to provide a full turnkey service to our clients which request it

SWLP are safety audited by Safecontractor to ensure high levels of Health and safety are maintained during the course of our works. Engineers are trained in all aspects of lightning protection, and are DBS checked, and hold security clearance for works within the Ministry of Defence estates.

South West Lightning Protection core services are provided to the commercial sector, Ministry of Defence, and Telecoms providers, However we are also involved with numerous individual clients, ranging from churches, schools, and facilities management companies, no job is either too big or small.

Our works are coordinated from our office locations in Plymouth and Scotland, so wherever your project may be located we are able to provide our full range of services.

In recent years we have expanded our services to our clients to include the Test and Inspection of roof mounted horizontal safety systems, anchors, access ladders, and guard rails, which provides a costs saving when combined with our lightning protection inspections

Whatever your requirements we are here to help

T 07807 334441
www.lightningconductor.org



The Historic Metalwork Conservation Company

The Historic Metalwork Conservation Company (HMCC Ltd) provides conservation services to all those who have responsibility for historic metalwork in the public and private sector. Services can be provided to museum staff, conservation architects, local authority conservation officers, heritage engineers, historic building restoration contractors and private individuals looking for professional solutions when dealing with conservation and restoration problems.

At the end of 2020 HMCC Ltd was employed by Qi Refurbs & Contracts Ltd of Telford to assist in the restoration of a Victorian tavern light from an art deco building in the centre of Swansea. The building is currently a Holland & Barrett store and QiRC were carrying out renovation works. The lantern was no longer illuminated and was in a poor condition. It was taken to a workshop for comprehensive repair.

The lantern was dismantled, with the remains of the roof being removed and the glass panels carefully taken out. Remaining paint and rust was removed manually before heavily wasted steel sections were replaced. The original roof was repaired and the missing heart to one side of the finial remade in copper.

The frame was completely repainted using an alkyd oil system. Original broken glass panes were repaired with a UV resistant adhesive resin before the lantern was re-assembled. The glass panes were secured using a modern glazing compound before the repaired roof was re-fitted. A new electrical fitting was added inside, and fly mesh fitted to keep insects out. The lantern was refitted by QiRC in early March 2021.

www.hm-cc.uk



Helping conserve our nation's heritage

Historic Metalwork Conservation Company Ltd

- Complete conservation reports
- Condition Reports
- Specifications for conservation work
- Small scale conservation work
- Collections care regimes
- Estimating conservation work

Peter Meehan BSc (Hons) ACR

07883205704
petermeehan@hm-cc.uk
www.hm-cc.uk

"Specialist advice to those with responsibility for historic metalwork in the public and private sector"

South West Lightning Protection

www.lightningconductor.org

Airport Business Centre
 Estover
 Plymouth
 PL67PP

Also located in Scotland,
 & London

Formed in 2014, and having over 40 years of expertise in the lightning protection industry, South West Lightning Protection, provides a full range of services from our office locations in the UK. With our trained operatives we are able to provide a full range of services, from conception to completion, and with our Safecontractor accreditation you can be assured works will be carried out adhering to all relevant health and safety requirements.

Whatever your requirements - we are always pleased to help

- Lightning Protection risk assessments
- Installation & Design by accredited engineers
- Test & Inspection (BSEN62305, BS6651, NFC 17 102)
- Safety Line systems testing

Tel: 07807 33 44 41

Web: www.lightningconductor.org

Email : North@lightningconductor.org — South@lightningconductor.org

Proceeding with confidence

3 Reasons Why You Should Consider Laser Scanning On Your Next Build Project.

1. Reduced Project Liability – Laser scanning collects a million data points per second, by completing scans from multiple vantage points, a singular 3D Pointcloud can be created. This allows the opportunity to highlight areas of interest and reduce lesser unknowns with ease.

2. Time & Cost Effective – Using Laser scanning, both the captured Pointcloud and design work can be viewed and worked on in 3D. This steps away from traditional 2D to 3D conversions ordinarily required, saving clients both time and money.

3. Streamlined Work Flow – A holistic approach to project work, all project stakeholders can extract their deliverables from the same data like never before.

With vast and varied experience within the surveying industry, it is safe to say Metron know a thing or two about how to make your projects run smoothly. Working with a variety of clients nationwide, Metron is the go to name for all your survey requirements. For a no obligation chat to find out what we can do for you, give us a call on 020 3916 5980.

If you wish to find out more about our company and the projects we work on, you can also give us a like or follow on LinkedIn, Instagram and Twitter.



METRON

Rapid 3D Data Capture Specialists

Construction Verification • Clash Detection • Critical Dimension Checks • BIM Ready Survey

With staff based throughout the country, we are ideally located to reach clients throughout the whole of the UK and mainland Europe who require surveys for both natural and built environments

www.metronsurveys.com
info@metronsurveys.com
 020 3916 5980

LASER SCANNING • BUILDING INFORMATION MODELLING (BIM) • MEASURED BUILDING SURVEYS
 SETTING OUT • TOPOGRAPHIC SURVEYS • DRONE BASED MAPPING

Your bespoke, high-quality basement from the market leader



Our basements have already proven themselves a thousand times. We are specialists in our field, building basements in subsidence areas, on slopes, and in areas with a high-water table or flood areas. If you build a house, you want it to perfectly suit your needs. A basement not only offers more space and design possibilities but also substantially upgrades a property.

Top quality insulation is essential to create a warm and inviting atmosphere. Using our insulation products, it is possible to insulate your basement to passive house standards. With our basements you can rest assured that your house will have optimal protection against



penetrating moisture. Our 100% waterproof AquaSafe® basement protects your home from moisture and your wallet from the risk of costly restoration work due to water damage.

As a prefabricator we manufacture to stringent quality and manufacturing processes. We also offer our clients a fixed price and peace of mind. One of our key differentiators is that we place the customer at the centre of the build by providing a dedicated project manager and support, before, during and after the construction project. Book your free consultation now.

T 01932 344454
www.glatthaar.co.uk

GLATTHAAR KELLER
 market leader in basement construction

Latest Schöck BBA Certification raises the bar.

Thermal break technology you can trust.

No need to compromise on performance, quality or service. Schöck products meet full compliance with relevant UK building regulations, are approved by the BBA, LABC registered and classified as fire resistance class REI 120.

www.schoeck.com

Is portable accommodation the answer to construction's fight with coronavirus?

By Benjamin Rothwell, Business Development Manager at Bunkabin

As the UK adapts to the 'new normal' caused by the coronavirus outbreak, the construction industry is faced with a difficult path, as companies cannot simply return to their old work practices with social distancing restrictions in place. This leaves construction companies with a need to adopt agile and reactive processes in order to be ready for any more challenges that are thrown at them. One way to achieve this level of flexibility is portable accommodation.

Bunkabin is the leading supplier of site sleepers and welfare units, which have already proven

to be popular within the construction sector. These units provide sleeping, kitchen, dining, shower and toilet facilities for workers, with robust protection from the elements. Hiring these cabins can offer businesses a number of potential safety advantages, allowing them to have high-quality temporary accommodation shipped out to any location at short notice.

They are easy to clean and maintain, allow staff to avoid daily commutes and make it much easier for managers to operate a relatively controlled environment. What's more, the mobile nature of these accommodation units makes them perfect for planning flexibly when worker availability and project timelines cannot be reliably predicted.

This gives construction firms valuable breathing room at a time when guaranteed outcomes are a rare luxury. By judging the scope and requirements of each project on a short-term basis and investing in portable accommodation accordingly, firms can find the flexibility they will need to make the most of the opportunities that are still available to them.

COVID-19 still poses a real threat to the construction industry's traditional business models and ways of working. As such, companies that are able to adapt the quickest with new solutions stand the biggest chance of emerging from this challenging period in the best shape.

www.bunkabin.co.uk



When a water company supplies water...they don't want it back!



Protect contamination of the drinking water supply - whilst boosting water pressure where inadequate - with Arrow Valves "Midi-Break" Break Tank and Booster set.

Providing Fluid Category 5 backflow protection, "Midi-Break" is packaged in a compact stainless-steel cabinet for neat and hygienic installation - ideal in kitchens and bathrooms.

Applications -

- ▲ Healthcare (baths with shower hoses, clothes and dishwashing machines)
- ▲ Bidet washing
- ▲ Sinks with hoses
- ▲ Non-domestic Hose Union taps

Three models offer differing flow characteristics; Midi-1 is commonly specified for a shower, Midi-2A for a single tap and Midi-3A for washdown. Optional accessories aid installation and boost potential in application -

Wall mounting bracket - for ease of installation.

Wall cover - insulated GRP enclosure, ideal for use in external applications (brackets required).

Drip tray - catches water discharged through the weir if inlet valve is faulty or overflow blocked.

Frost protection - factory fitted frost protection system for use in unheated areas (wall cover required).

Volt-free BMS alarm - activates fault lamp and BMS relay if tank water level is too high or low, or if there is a low-pressure fault.

Automatic tank purge system - assists with legionella control where the unit is infrequently used or in a warm environment. Replenishes water in the tank and runs pump for a few seconds every day.

"Midi-Break" is supplied factory tested, ready for wall mounting.

For higher flow rates and/or demand see "Boost-a-Break".

Contact www.arrowvalves.co.uk



Quality Fixing Supplies Ltd

Your one-stop shop for:

• Bolts and Nuts	• Furniture Fixings	• Drill Bits
• Washers	• Roofing Bolts	• Tools
• Concrete Anchors	• Hook Bolts	• Helicoil Inserts
• Nails	• Eye Bolts	• Wood Screws
• Staples	• Security Fixings	• Plastic Plug
• Rivets	• Drill Screws	• Socket Screws
• Threaded Bar	• Pallet Wrap	• Tube & Fittings
• Window Screws	• Sealants	• Valves

New - Assorted Trays

Comprehensive range of problem solving handy mixed sets. Offering a wide variety of commonly used items designed to cover the majority of small jobs that need a quick fix. Packaged in robust trays that can be securely clipped shut, ready for the next task.



26 Unit Factory Estate, Argyle Street, Hull, HU3 1HD
 Tel: 01482 210635 Email: lee.harding@qfshull.co.uk
 Web: www.qfshull.co.uk



Fine Furniture, Homewares & Small Structures

www.temperstudio.com
enquiries@temperstudio.com



Automatic crosscut saws



production costs reduced by up to 50%
5-15% less wood used

Daltons Wadkin offer a comprehensive range of automatic programmable crosscutting systems for straight and angle work complete with powerful optimisation and defecting software as standard.

Visit our Nottingham showroom for a demonstration



SINCE 1982



Sole UK & Ireland Distributors
 tel: +44 (0)115 986 5201 www.daltonswadkin.com

Intelligent water monitoring

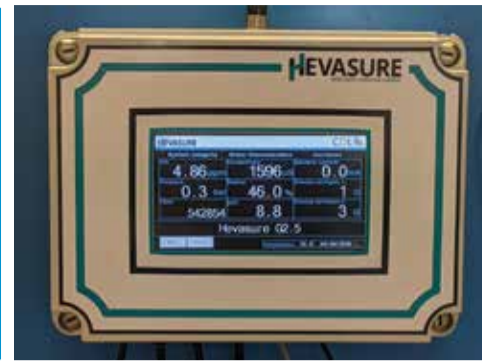
Intelligent water monitoring checks a range of parameters in order to get a real-time view of system integrity, water characteristics and corrosion. Suitable for use on closed-circuit systems of any size, this type of technology prevents corrosion and system breakdown by flagging up small changes in condition that would lead to more serious (and expensive) issues if left unchecked.

Common applications include commercial premises, in both the public and private sector, district heating systems, data centres and hospitals. Hevasure's 24/7 real-time solution can be used to monitor conditions at all stages of a water system's life, from pre-commissioning cleaning through to handover and on-going maintenance. Importantly, our state-of-the-art sensors check for Dissolved Oxygen (DO),

something that is not picked up by sampling – the traditional way of checking water condition. DO is the pre-cursor to nearly all types of corrosion, directly resulting in pipe and component degradation and/or providing the right conditions for bacteria to thrive, which can lead to Microbial Induced Corrosion (MIC).

Detecting oxygen's presence, along with the parameters that cause it to enter systems, such as pressure or make-up water flows, is critical. Measuring other contributory factors - pH, inhibitor levels and temperature - provides a full picture, that will lead to more efficient closed-circuit systems, less likely to corrode and fall-foul of expensive repairs.

www.hevasure.com



Do your project justice

With Quality & Professional Promotional Content



Whether you want to promote a newly finished development, give further insight into your manufacturing process or follow a construction project from breaking ground to practical completion, Efendi Architectural are on hand to provide the highest standard in visual media to support your project.

We work closely with all our clients to ensure we provide exactly what's required to achieve the best results.

OUR SERVICES

- ▲ CONSTRUCTION FILM & PHOTOGRAPHY
- ▲ MANUFACTURING FILM & PHOTOGRAPHY
- ▲ CONSTRUCTION TIMELAPSE
- ▲ COMPLETE OR STAGED PROJECT COVERAGE
- ▲ SPECIALLY TAILORED LINKEDIN PROMOTIONAL PACKAGES
- ▲ AERIAL FILM & PHOTOGRAPHY
- ▲ BROCHURE & GRAPHIC DESIGN (PRINT & DIGITAL)

THIS IS JUST THE BEGINNING OF WHAT WE CAN PROVIDE, IF YOU REQUIRE SOMETHING MORE BESPOKE PLEASE GET IN CONTACT AND WE CAN DISCUSS YOUR REQUIREMENTS IN MORE DETAIL.

CASE STUDY



CLIENT: Genius Facades Ltd
INDUSTRY: CONSTRUCTION - FACADE MANUFACTURER

PROJECT OUTLINE:

A regular and valued client Genius Facades wanted to promote factory expansion and recent investment in new machinery to new and existing clients.

To achieve this we visited the factory and filmed and photographed factory processes and the new machinery in action. This content was then used to produce a range of different videos and has also been used for brochures, advertisements, regular linkedIn updates and on the client website.

www.efendiarchitectural.com



efendi architectural

FILM | PHOTOGRAPHY | GRAPHIC DESIGN

www.efendiarchitectural.com | +44 (0) 7587054663 | info@efendiarchitectural.com

CONSTRUCTION | INDUSTRIAL | RESIDENTIAL | HOTEL



Braving the Storms

With Winter fast approaching the weather has undoubtedly already taken a turn for the worse. After basking in days of sunshine we are now heading for wet and rainy days as the British weather sets in, and issues will, no doubt, start to arise with poorly maintained roofs.

Weather conditions can be harsh on exterior structures, and changes from hot to cold temperatures make their mark on coatings and coverings exposed to the climates and UV radiation throughout the year. Cracking, peeling, blistering, thermal stress, surface erosion of protective roofing membranes are all common problems related to weathering which ultimately results in installation failures and subsequent expensive leaks and structural damages to repair or put right.

At Bond It, we have tried to make choosing the right product a simple process. We offer a wide range of roofing products to cover all aspects of roofing from combating leaks to improving efficiency.

Under our Bitubond brand we have put together everything you need as a Professional Roofer for new build and maintenance projects which provide immediate and safe waterproofing solutions. Products that have been designed and manufactured for the job in hand.

Available in an array of sizes the Roofing portfolio encompasses waterproofing compounds, high performance solar reflective solutions, all weather roof compounds, primers, felt adhesive, self-

adhesive flashing tapes, DPC, chipping solution, and tanking membranes.

All high quality, UK manufactured products with tried and tested formulations that have been used in the industry for nearly 2 decades. All ready to use from the tins and requiring no heavy heating equipment to apply, the range is simple but effective.

For more information contact our Sales Team on 01422 315300.



The Benefits of Professional Radio



We've all seen the license free walkie talkies you can get from Amazon or E-bay for £50, so why should I spend more on a professional radio for my business? Here is why you should invest in professional, digital radios if communication is important to your business:

- 1. Range.** A license free radio can only operate at 0.5W. A licensed professional radio can operate at 4W, so 8x the power means 8x the range, ensuring you can talk across the site.
- 2. Interference.** A professional licensed radio gives you an exclusive frequency on which to communicate, with no interference from outside sources.
- 3. Clarity.** Modern digital radios provide clear audio, without the crackle and hiss of an older analogue radio. They work in the noisiest of environments, without compromising on audio quality
- 4. Rugged.** If you're working outdoors in wet or dusty environments you'll need a professional radio with a high IP rating, with a durable design to last for many years.
- 5. Battery.** If you're on site for 12 hours a day, you'll need a radio that's going to last your entire shift.
- 6. Health & Safety.** More than just a communication device, you can programme your radio to alert a team member in case of a lone worker or panic alert.

So next time you're thinking about a walkie talkie for your business, make sure you get the right tool for the job.

www.chat-com.com

YOUR HOME: SMART | INTELLIGENT | AUTOMATED



At Redpath Installs we believe that a true smart home should be simple, affordable and intuitive. The modern home is full of "Smart" devices which in their own right are smart but where they are lacking is the ability to speak to one another and integrate. Redpath Installs brings all these devices together to work in complete harmony and simplifies everyday tasks. This could be through automatic lighting, heating only occupied rooms to the perfect temperature, raising external blinds when storms are blowing in saving costly damage. The possibilities really are endless. A Redpath Installs Smart Home creates an experience like no other. A home that reacts to you and your needs.

- Lighting
- Multi Room Audio
- Heating
- Cinema/Media Rooms
- Security
- Data Networks & Wifi Solutions

TO START DESIGNING YOUR TRUE SMART HOME TODAY CONTACT US ON:

☎ 07817 663 956

✉ info@redpathinstalls.co.uk

📷 @redpathinstalls



THINK WE JUST PROVIDE WALKIE TALKIES?

EMERGENCY ALL CALL

LONE WORKER

PANIC ALERT

GPS LOCATION

ANDROID APP INTEGRATION

DISPATCH MANAGEMENT

RUGGED & RELIABLE

ASSET TRACKING



THINK AGAIN...

Intelligent two-way radio solutions don't just provide essential communication, they improve your health and safety procedures, logistics and fleet management. Contact us to find out how.

Call: (+44) 01747 898008 www.chat-com.com



MOTOROLA SOLUTIONS
CHANNEL PARTNER

The Preparation Group turns 30

Established in 1991 and celebrating 30 years trading, based in Lincoln, The Preparation Group is a specialist in surface preparation, removal, re-texturing, polishing and cleaning, offering cost-effective solutions with the largest and most innovative range of equipment in the UK.

Offering shotblasters, planers, grinders and multi-strippers, manufactured here in the UK, The Preparation Group also sells accessories for these machines, with an expert technical team who can provide the right solutions for every requirement. The Preparation Group can also offer

overnight delivery across the UK, holding large stock levels to make sure that equipment and tools are always available.

We all know the old adage, fail to prepare – Prepare to fail! No truer word said of Subfloor Preparation. Poor



Preparing, Polishing & Cleaning

MADE IN BRITAIN

- Sales & Hire of Equipment
- Accessories
- Repairs & Maintenance
- Contracting Services

one stop shop



Maris Pumps
Pump & Hose Hire
Sales & Service



GUARANTEED
24-HOUR SERVICE
365 DAYS A YEAR

UK's fastest growing pump hire specialist

Specialists in Pump & Hose Hire, Sales & Service

Established since 2003, we are a leading supplier of water pumps in the UK. Here at Maris Pumps we aim to provide our customers with the most up to date equipment and professional backup service on the market.

Technical advice is always freely available, ensuring that you get the most accurate information possible, allowing you to make the best decision for your proposed application.



MARIS PUMPS M3

The M3 is a completely automatic, general-purpose, self-priming pump set built by a pump hire company with reliability at their core. This unit is built to withstand varied applications without compromising on ease-of-use or fuel efficiency – two factors we know to be important from our analysis of previous pump failures and their root causes. The M3 also does not vent the priming-system to atmosphere, minimising the amount of hazardous molecules that operators are exposed to* – a must for any company interested in protecting the wellbeing of their site-based staff and nearby general public. The only vacuum-assisted pump on the market capable of this!

*We are currently working alongside a research team at a leading university to verify the amount of hazardous molecules that are destroyed with our patented system.



INDUSTRY LEADING FUEL EFFICIENCY
Our pump is designed from the ground up to be as fuel efficient as possible – upto 3x lower than the fuel consumption of other equivalent alternatives.



AUTO STOP/START CAPABILITY
Automatic stop/start makes the pump much more user friendly and allows the usage of float switches to turn the pump on and off based on the water level.



BUILT-IN SOLAR PANEL A solar panel at the top of the unit prevents flat batteries by trickle charging the battery when not in use. This is ideal for scenarios where the pump will be used on floats and as such may be turned on/off frequently.



SEALED PRIMING SYSTEM A unique, patented design eliminates venting exhaust gasses to atmosphere. This system also eliminates any atomised waterborne pathogens, including Coronavirus.

NOW AVAILABLE FOR HIRE AND SALE EXCLUSIVELY AT MARIS PUMPS

Get in touch with our friendly team today to enquire about **PUMPHIRE**, sales or servicing:
www.marispumps.com

01246 201111



E: sales@marispumps.com | Chesterfield - 01246 201111 | Leeds - 01134 873060

subfloor preparation can be very costly in the long run when trying to rectify a failed floor. As manufacturers of mechanical subfloor preparation equipment their focus is on the various types of mechanical subfloor preparation that can be used.

Mechanical subfloor preparation tends to be the element that is overlooked in preference for chemical subfloor preparation to try and reduce costs. It is imperative that it is understood that the two things are not in competition with each other but need to be used in conjunction with each other. Floors need both to be successful giving confidence for the prevention of floor failure.

“We manufacture some of our equipment range here in Lincoln and at present it is increasingly important for many of our customers who want to buy equipment made in the UK. We Fly the Flag!” explained Lesley Collins, Business Development Manager.

“Our equipment offers a range of solutions for all surface preparation needs. All our equipment is robust, reliable and offers simple operation and maintenance”. Match your chosen machine with one of our heavy-duty vacuums, with self-cleaning filters and longopac options for 98% proven dust containment, simple innovations for safer and efficient working.

The Preparation Group provide a One Stop Shop for environmentally friendly solutions for all types of surface preparation the manufacture of equipment, repairs, servicing and maintenance of equipment to providing the correct tooling even down to the nuts and bolts!

Contact
www.ppcgroup.co.uk/

A solution for all your underfloor heating and liquid floor screed needs



underfloor heating performance.

Faster-drying Screeds

Easyflow can now supply a range of faster-drying products that can offer reduced drying times – 10 days for tiling

and 28 days for wooden floors in non-heated floors, in heated floors 14 days for tiling and 21 days for wooden floors.

T 0333 2416610
www.easyflow.org.uk/netmag



Easyflow offers you with a single point of contact and a turnkey solution for all your underfloor heating and liquid floor screed needs. From designing and installing your underfloor heating, to a full laser survey on site, to the supply and installation of your liquid floor screed.

Benefits of Underfloor Heating

Up to 30 per cent lower running costs than radiators; Avoid overheating and energy waste – heats more efficiently using just 35 degree water; Low carbon footprint; Can be used in conjunction with any heat source; Completely versatile, lay tiles, carpet, or wood; Control remotely.

Benefits of Liquid Floor Screed

Reduced screed thickness; Better heat conductivity; Fast drying and thermally guaranteed options; Can be force dried; Greater compressive strength than traditional screeds; Levels survey carried out for accuracy; Environmentally friendly.

Underfloor Heating

We are dedicated to providing our clients with the very best in underfloor heating systems, together with customer care above and beyond expectations. Our experienced consultants are dedicated to investing their time in planning and designing your underfloor heating system, ensuring that you are supplied with an underfloor system of the very highest standard.

Liquid Floor Screed

Anyhydrite flowing floor screeds are based on a synthetic anyhydrite binder rather than OPC Cement giving them many unique benefits over cement screeds, the most obvious difference is their fluid application compared to semi dry cement screeds, but they also offer higher compressive and flexural strength, lower shrinkage, eliminate reinforcement, improve surface finish and greatly improved



Heartlands Metal Craft
AUTOMATIC GATE SPECIALISTS

GATES & RAILINGS + BALCONIES & BALUSTRADES
AUTOMATION AND ACCESS CONTROL SPECIALISTS

TEL: 01384 900 260 MAIL: INFO@HEARTLANDS.CO.UK

WEB: WWW.HEARTLANDS.CO.UK



STORAGE PROBLEMS?

We've heard it all.
Better yet, we've solved it all.

Get in touch with our Business Services team today to book your **FREE** consultation.
The trusted experts in space utilisation.



Scan me



BiGDUG

WWW.BIGDUG.CO.UK 0800 141 3380

Live Life Green with Wonderwall

Within this issue of Building and Construction Review, we have selected Wonderwall as the recipient of our Commitment to Excellence Award for their ongoing dedicated work for garden and landscaping design.

Wonderwall is a UK leading producer of unique decorative garden products. The company was established by Rick McKeever in 2016, with Dave Fitton as Commercial Director. Through the



expert leadership of Rick and Dave, who heads up the commercial arm of the business, the company has maintained a steady growth and has gained a positive reception within the industry for their living wall features, created by the company's Vertical Planter.

A dedicated gardening company, the team at Wonderwall is derived of passionate gardeners that specialise in garden design. The company has built a strong reputation within the industry and is known for their picturesque, show stopping features and vertical gardening expertise for creating their living wall designs.

The planters are diverse and suitable for both outside and inside projects and they enable the user to create beautiful bespoke gardening

designs. Suitable for many different applications including sheds, walls, fences, archways, buildings, balconies, interiors and window boxes – the Vertical Planter revitalises average features and enhances them with the natural beauty of greenery. The planters make a great addition to gardens and homes, with a plethora of bespoke advantages for garden design. A noteworthy feat within the planters' design is their self-watering



function, ensuring less maintenance for customers and maintaining the volume, velocity and vibrancy of the living wall design.

Wonderwall's living walls provide customers an option of reducing their carbon footprint by creating a living breathing wall without the need for bricks.

The living wall is also recyclable, energy saving and cost effective. Speaking to Managing Director Rick McKeever about the environmental benefits of Wonderwall's living walls, he stated that "We are always searching

for new innovative solutions and products and we are passionate about providing products to assist companies to lower their carbon footprint."

The benefits of having a living wall are limitless and they are renowned for their economic, ecologic and societal advantages. A living wall also helps a variety of different health associated factors and is able to aid things such as the purification of air, reduction of the ambient temperature and therefore regulating the temperature and providing a happier environment, as studies have shown a rise in people's happiness when surrounded by a green environment. By reducing the temperature, Wonderwall is helping their clients save on energy and conditioning costs as the temperature is naturally cooled through the plants' process of evapotranspiration, enabling the living walls to reduce the temperature by 50°F.



Another advantage of the living wall is their environmental benefit. With the ever growing population, the human footprint is growing significantly. The need to preserve nature is a vital environmental requirement and Wonderwall's living walls are a great option in embracing and nurturing nature and helping to reduce the carbon footprint.

In terms of the produce tailored for by the planters, the planters are able to maintain a selection of gardening produce including: fruit, vegetables, house plants, succulents, perennials, bedding, grasses, ferns, shrubs, herbs, bulbs and alpinas.

Combing landscaping and gardening in perfect harmony makes Wonderwall's Vertical Planter a truly iconic product. In terms of recent achievements for the company, Wonderwall gained great success



this year at the Chelsea Flower Show. Wonderwall was awarded five stars for its trade stand that they designed for Dobbies Garden Centres, achieving the title of The Best in Show Trade Stand at the Chelsea Flower Show in 2019.

Speaking again to Rick McKeever, about what sets Wonderwall apart from their competitors, he told us that, "we are extremely competitive, we pride ourselves on providing reasonable prices without sacrificing quality. We also look after our customers throughout the whole process; we offer on-site visits and provide our clients with consultancy and services across the whole journey."

In terms of future plans for Wonderwall, Wonderwall plans to raise further brand awareness and continue providing the most innovative designs with their living walls. The company is also devoted to showcasing the plethora of benefits that their products contain for both people and the environment.

For any more information or to view the outstanding projects and designs that can be created with Wonderwall's Vertical Planter please see the details featured below.

Contact
M 07834 372468
rick@wonderwall-it.co.uk
www.wonderwall.direct

