

Building & Construction Review



Heating for Luxury Spaces



Designer radiators are becoming fundamental in bathroom design as well as throughout the whole home. Designed to match today's interiors, our new range of radiator designs create a look capable of transforming your bathroom, living room, bedrooms and kitchen. Choose from something in a traditional style or a more contemporary vibe.

With bathrooms exclusively designed for everyone we wanted to expand our sophisticated heating range to show how nuie can complement any room in your new home with our new aspirational designs.

When design meets functionality, there really is no need to compromise. Nuie understand that it is important to get design right first-time round – the right colour, the right space, the right price. Nuie's new heating collection lets you bring flair and pizzazz to a room looking for the extra little something.

The nuie heating collection boasts a variety of innovative and designer inspired radiators. Our wide range of styles are available in many sizes and finishes to complement all colour palettes in the home, as well as unique design features such as integrated mirrors or towel rails. Pick from vertical or horizontal, compact or large, single or double panel, gloss white or anthracite, nuie really has it all.

It is easy to forget the small things in your home, and re-decorating can get overwhelming at times, that's why we want you to enhance your space with beautiful heating solutions.

Creating a warm cosy sanctuary, lovingly priced. Our range provides the perfect balance between style and practicality. Simply by incorporating one of our styles into an existing home can make a huge impact and difference. Resulting in an ideal decorative replacement for existing radiators in any renovation project.

Including excellent heat output and all proudly CE approved the styles are also backed by an impressive 5-year guarantee for peace of mind. All products are designed and finished to the highest quality making them durable and long lasting. Our choice of radiators are made available through our network of trusted sellers. There are no questions why nuie is the go to brand for your perfect radiator because we believe everyone deserves to have a beautiful bathroom.

See our full heating collection on our website - www.nuiebathrooms.com

Nationwide Louvre Company



Nationwide Louvre Company for high quality aluminium Louvres, Louvred Doors, Louvred Plant Screens, Acoustic louvres, Aluminium & Timber Brise Soleil / Solar Shading manufactured in our factories in Aldridge in the West Midlands. Nationwide Louvre Company offers a full supply and installation service to its customers throughout the UK and have carried out a number of projects in the channel isles and Europe.

The business has over 40 years of experience in supplying and installing high quality products on residential, commercial and construction projects. Nationwide Louvre Company use in-house highly trained installation engineers with many years experience and specialise in louvred plant screening and Brise Soleil with a number of our projects having been recently submitted for design awards.

Our Brise Soleil projects are backed up with computer simulation software to assess the effectiveness of our products in reducing the effects of solar gain on buildings.

Brise Soleil not only enhances the appearance of a building but if designed correctly will provide a much better living or working environment for the building's occupants, with the added benefit of reducing glare to help with computer work and will reduce the running costs of mechanical ventilation and air conditioning.

Contact
T 01922 457204
sales@nlc-louvres.co.uk



AJ Products
See on page **06**



MRDS
See on page **08**



Goland Group Ltd
See on page **09**

StartSafe makes Health and Safety digital

The world as we know it has been turned upside down in the last six months with restrictions we never dreamed of becoming part of our daily lives. Balancing audit and safety requirements within a Covid-safe environment, whilst supporting business sustainability and corporate responsibility objectives, has become a challenge many businesses face.

The need to reduce and record touch points between employees, clients and hardware has led to an increase in paper trails, where previous environmental pressures were encouraging a paperless environment.

Checks taking place on paper require manual input into company systems before issues are identified and acted upon. This is not only a transmission risk but takes time, administration and often significant financial burden to manage health and safety needs.

StartSafe provides a live, paperless, minimal touchpoint mechanism by reducing the exchange of paper and increasing productivity by identifying issues and risks in a simple and quick format. The software provides full audit checks on any aspect of a business, overseen by an interactive dashboard. This gives managers (from SMEs to PLCs) a complete and immediate overview of issues, the ability to confirm checks have been undertaken and, ultimately, confidence that employees and business processes are operating safely and effectively.

Health and safety checks become part of the daily process flow with an easy to



use, instant reporting tool that reduces administration requirements and streamlines issues to be flagged instantly without the need for a paper audit trail.

Such is the versatility of StartSafe, it can provide data monitoring of anything from entire construction site activity, production lines, vehicles or specific equipment. Checks can be bespoke, allowing accurate and relevant guidance for checking modified/specialist equipment and vehicles. The checks can follow compliance guidelines and allow instant reporting of issues, including written details and photos, sent automatically and directly to one or more named personnel, all tracked and all auditable.

StartSafe is already operating in manufacturing, food production, airports and advertising but is currently looking for construction partners to work with to demonstrate the versatility of the system across different industries.

T 0330 223 6260
adambreathwick@startsafe.tech
www.startsafe.tech

Is portable accommodation the answer to construction's fight with coronavirus?

By Benjamin Rothwell, Business Development Manager at Bunkabin

As the UK adapts to the 'new normal' caused by the coronavirus outbreak, the construction industry is faced with a difficult path, as companies cannot simply return to their old work practices with social distancing restrictions in place.

This leaves construction companies with a need to adopt agile and reactive processes in order to be ready for any more challenges that are thrown at them. One way to achieve this level of flexibility is portable accommodation.

Bunkabin is the leading supplier of site sleepers and welfare units, which have already proven to be popular within the construction sector. These units provide sleeping, kitchen, dining, shower and toilet facilities for workers, with robust protection from the elements. Hiring these cabins can offer businesses a number of potential safety advantages, allowing them to have high-quality temporary accommodation shipped out to any location at short notice.

They are easy to clean and maintain, allow staff to avoid daily commutes and make it much easier for managers to operate a relatively controlled environment. What's more, the mobile nature of these accommodation units makes them



perfect for planning flexibly when worker availability and project timelines cannot be reliably predicted.

This gives construction firms valuable breathing room at a time when guaranteed outcomes are a rare luxury. By judging the scope and requirements of each project on a short-term basis and investing in portable accommodation accordingly, firms can find the flexibility they will need to make the most of the opportunities that are still available to them.

COVID-19 still poses a real threat to the construction industry's traditional business models and ways of working. As such, companies that are able to adapt the quickest with new solutions stand the biggest chance of emerging from this challenging period in the best shape.

Contact
www.bunkabin.co.uk



Harlequin
See on page **12-13**



Wonderwall
See on page **14**



Allerton
See on page **24**

An Introduction to Global Survey Equipment Ltd



offers everything from auto levels to robotic instruments & GNSS, all of which are under the manufacturing brand of GeoMax (part of the Hexagon group).

The Zoom 90 is the ultimate one-man system with up to 20% more automation performance and extended reflectorless measurement capability. Add to this the X-pad ultimate field software, which is entirely user focused and adopts an ideal balance between clear structure, uncomplicated workflows and impressive functionality.



Within this issue of Building and Construction Review, we have selected one of the leading UK suppliers of survey and safety equipment, Global Survey Equipment (GSE) as the recipient of our Building Services Company of the Year Award. Through the company's clear devotion to their customers and for their ongoing commitment to the construction industry Global Survey Equipment (GSE) have been contributing significantly to the ongoing development of the industry.

Established in 2011 by Mark Owen and Matthew McGuire, Global Survey Equipment (GSE) is a constantly growing company within the survey and safety sector of the construction industry. Based in Atherton, Global Survey Equipment are ideally located in the heart of the North West of England, enabling the company to have access to extensive motorway networks and delivering the most efficient delivery service possible for their customers.

Global's four main areas of services they provide are: hire, sales, repair and calibration, although they also provide instrument and cable location training.

GSE offers a broad range of products, all of which are kept up to date with the latest technology. The survey equipment the company supplies are extensive to say the least, and undoubtedly cover all aspects of the surveying process. GSE

The latest addition to GSE's already impressive product range is the GeoMax Zenith 40, the flagship of the GeoMax GNSS receivers. The Zenith 40 is equipped with the latest cutting-edge measurement engine and supporting fast converging precise point positioning it provides the highest level of technology and meets the toughest MIL standards.

GSE also presents a range of detection devices, including Cable Avoidance solutions, Environment Meters, Drain Cameras and Gas Detectors. Cable avoidance products include CATs, Gennys and Accessories. The company also provides a half day C.Scope training course on the intricacies of cable avoidance. Environment Meters include Light Meters, Moisture Meters, Sound Meters, Thermometers and Air Flow Meters, and Gas Detection solutions.

In terms of their calibration, servicing and repair services, the company provides a full instrument calibration, alongside servicing and repairs on all surveying and confined space safety equipment. All of the service technicians at GSE are trained and fully compliant to the highest standards, undertaking regular professional training. Another notable service that GSE provide is as a warranty agent for Dewalt lasers in which, GSE deliver all the calibration and repairs throughout the UK.

Along with detection and survey equipment, GSE supplies reliable and durable health and safety equipment for confined space entry and working at heights. GSE has your health and safety concerns covered, with all products complying with legislative



regulations, you can be sure that you're in safe hands when calling on GSE to secure the safety of your work site.

GSE is not only dedicated to offering state of the art and reliable products, but to maintaining strong, trusting relationships with its clients too. We had the pleasure of speaking with Co-founder Mark Owen, he told us that "GeoMax instruments aim to make the end users jobs more efficient. We pride ourselves on our service and close relationships with clients". It's the attentive attitude that GSE adopts that gives the

company its edge and sets it apart from its competitors. Often, large suppliers might not make the time to work with clients in order to arrive at the most mutually beneficial outcome, however GSE does, making customer satisfaction as significant as profitability.

GSE aims to sustain this attitude as it pushes forward, while also paying keen attention to growth and expansion, ensuring that construction and civil engineering industries are all given the opportunity to benefit from the broad spectrum of products that GSE supplies. The company attends the Hillhead trade show held every two years, exhibiting and showcasing their product range and the way it is reshaping the construction and engineering industries.

To find out any more information or to contact Global Survey Equipment directly, please see the details featured below.

Contact
T 01942 896244
sales@globalsurveyequipment.com
www.globalsurveyequipment.com

The Sawmills
52 Rosedale Avenue
Atherton
Manchester
M46 0DZ



Comprehensive Building Solutions from B&Lonzer Construction



At Building and Construction Review, we are dedicated to showcasing companies who offer the highest quality services in their field and who have an acute focus on excellent customer service. This is why we are proud to feature B&Lonzer Construction for our BCR Recommends profile, for its outstanding renovation and extension services for its ever-growing client base.



A home is a key part of your identity; it is where you pass the majority of your hours, where you socialise, relax and spend time with your family, so when you are thinking of renovating your space, it is important to make sure your dreams are in the right hands. This is where B&Lonzer Construction can help, and turn your vision into a reality with a comprehensive and versatile renovation and extension service.

B&Lonzer Construction was established over 10 years ago by Bart Lonzer, offering a full range of services and specialising in home expansions, loft conversions, and kitchen and bathroom renovations. "We provide multifaceted work on properties, and can really turn a house upside down to achieve your dream home design," Bart tells us. Indeed, the company's high rate of repeat customers year on year is a testament to the quality of B&Lonzer Construction's service and stunning finished renovations. In fact, their customer base is continuing to grow as the company garners a stellar reputation for an efficient and hassle-free customer experience.

Committed to offering a comprehensive service to their customers with a complete building solution, B&Lonzer Construction can help with initial design stages, working with architects to revamp both interior and exterior environments, and can apply for planning permission for extensions. What's more, the company is able to get in contact with kitchen and bathroom suppliers and offer excellent discounts to their clients, sourcing complex equipment to ensure the highest possible quality



finish. Indeed, B&Lonzer Construction boasts an intricate network of various specialists to work with, ensuring the very best standards of building solutions on the market.

With the dynamic pace of modern day life, our everyday needs have changed and so too have the requirements of our homes. Now, we need multi-functional spaces to cope with busy family lives and the growing tendency to work from home. This is where extensions can help to revolutionise your domestic space, and B&Lonzer Construction can help you every step of the way and support you to optimise your home life.

Included within their services are stunning kitchens, with most of their designs coming from Italy, showcasing modern and sleek finishes. B&Lonzer Construction also offers beautiful traditional British



continue to expand in this area," he explained. "As a more long term goal, we're hoping to develop our teams and complete some bigger projects, moving from renovation to development, hopefully starting to develop houses in about five to seven years' time."

Without a doubt, the number of services B&Lonzer Construction can provide is manifold, and they are an expert in making the renovation process as simple as possible, eliminating the hassle of communicating with numerous different consultants by acting as a single point of contact for everything the customer needs. They are a true one stop shop for efficient and superior building solutions.

It is clear that B&Lonzer Construction's combination of industry expertise and commitment to providing the best customer experience possible puts them in prime position for offering superior building



kitchens, ensuring they are encompassing a wide range of preferences and visions for the perfect homely environment. They are committed to working closely with their customers to unleash the full potential of their house, offering expert support and guidance through the initial planning stages right through to final completion

We had the pleasure of speaking to Bart about some of the company's future plans. "The construction side of the business has developed a lot in the last two years, and we're looking to

solutions for an array of projects. If you would like to take a look at some of their fantastic past projects, head over to their Facebook page where you can find an abundance of spectacular interior designs and extensions. Alternatively, get in touch using the contact details below.

Contact
T +44 (0)7704 515415
info@blonzer.co.uk
www.blonzer.co.uk
Facebook: B&Lonzer Ltd

WJ Timber Treatments launches new 100% non-toxic fire retardant

BURNBLOCK is a non-toxic and highly effective fire-retardant formula. A water-based treatment that is composed of 100% natural ingredients, BURNBLOCK is fully biodegradable – a UK first in treating sawn timbers.

Tested and certified to the highest European fire ratings by the most recognised institutes in Europe, BURNBLOCK is one of the most innovative and environmentally friendly fire-retardant businesses in the world. Institutions that have certified the treatment include RI.SE (SP-Fire) in Sweden, MPA in Germany and BRE in Great Britain.

Exclusively available in the UK at WJ Timber Treatments, BURNBLOCK treated timber effectively extends the

length of time between initial ignition and the point where a fire is out of control, providing more time for people to escape in the event of a fire. It also limits costs in terms of damage caused.

It works by effectively preventing oxygen – one of the three elements required for ignition and fire continuance, from reaching the treated object. Without oxygen in the chain reaction, the risk of ignition is greatly reduced and the speed at which any flame spreads is vastly decreased.

BURNBLOCK has also been tested in order to prove and substantiate its environmental credentials. The solution holds a neutral pH value of 7.2 and none of its elements contain toxic substances. As a result, nothing

found in the BURNBLOCK solution is included on the list of Substances of Very High Concern (SVHC).

Applied in a specialist facility using the latest high-pressure treatment technology, BURNBLOCK is applied via an impregnation process, through the use of an autoclave. The treatment is clear and invisible, leaving no staining or grease on the material as a result.

All substantiating documentation is provided with each treatment in order to provide customers with the assurances in relation to both quality and compliance.

T 01482 338950
info@wj-group.co.uk
www.wj-group.co.uk



Wales Timber Solutions: specialist manufacturer, supplier & erector



Wales Timber Solutions is a timber frame and web beams manufacturing company based in the heart of Snowdonia, North Wales. The company has grown steadily over the years without losing its identity or commitment to its varied customer base.

As a family run business, the company has over 35 years' experience in both traditional building methods and timber frame construction, supplying bespoke packages to self-builders, developers, housing associations and the commercial market.

Offering a fast and friendly personal service, Wales Timber Solutions can guide you through all stages, including building regulations, planning, and design selection, to ensure an energy-efficient final build.

The company can deliver packages for all types of designs from one-off bespoke units to multi-storey dwellings up to four storeys, and provides a full range of frame specifications to suit your particular project.

What's more, Wales Timber Solutions has dedicated teams of fully experienced carpenters who are supervised throughout to the completion of their schedule of works. The company is on hand to offer advice and to answer any queries during the construction process. All frames are snagged to ensure compliance with the working drawings and to ensure high quality of workmanship.

Find out more here:
 T 01766 762770
 M 07599 408344
info@walestimbersolutions.co.uk
www.walestimbersolutions.co.uk



WE HAVE THE CAPACITY TO PLANT 30,000 TREES PER DAY

OFFERING A FULL RANGE OF TREE PLANTING SERVICES



CSCS, SSSTS, EFAW+F PLANTERS AND SUPERVISORS

GET IN TOUCH

01258 818003

OFFICE@TOMORROWSFORESTS.COM
 WWW.TOMORROWSFORESTS.CO.UK

BCR2020

DELIVERING SUSTAINABLE OFF-SITE BUILDING SOLUTIONS

EXCEL STRUCTURES

The range of building systems and solutions provided by Excel Structures centres on four, complete off-site framed building systems – Timber Frame, SIPS (Structural Insulated Panels), Light Gauge Steel Frame and CLT (Cross Laminated Timber). Also on offer is a range of premium, high performance window and door solutions.

Utilising only the best systems available, self-builders can gain access to a comprehensive design, supply and installation solution based on parameters such as build efficiency, affordability and speed of construction.

rational WINDOWS & DOORS

Official partner of Rational Windows & Doors

t: 01234 924 050 www.excelstructures.co.uk
 e: enquiries@excelstructures.co.uk

EXCEL FAÇADES

Industry Leaders in Importing Certified Timber



Building and Construction Review is proud to announce that Vandecasteele Houtimport has received our Timber Products & Services award.

Vandecasteele Houtimport is a fourth generation, family run business that imports timber and timber products from more than 45 countries. The company specialises in the import, trading and export of Tropical Hardwood from Africa, Southeast Asia and South America, Scandinavian and Russian Softwood, Siberian Larch, North American Soft and Hardwood and European Hardwood.

"We import, stock and distribute hardwood and softwood from all over the world to over 30 countries. Due to the fast pace of modern industry, we can react quickly to our customers' demands and deliver stocks difficult to source within days on our own fleet of 18 vehicles," said Genevieve Standaert, Export Manager.

Established in 1883 by Louis Vandecasteele, Vandecasteele Houtimport is located in West Flanders with its uniquely designed warehouse and office in the town of Aalbeke, Belgium. Vandecasteele Houtimport has its own impressive storage facility that can accommodate more than 120,000m3 of sawn timber products and with the additional shed now being completed, the total covered space of the company's main warehouse now reaches 16 Hectares.

Vandecasteele Houtimport specialises in the import, trading and export of Tropical Hardwood from Africa, Southeast Asia and South America, Scandinavian and Russian Softwood, Siberian Larch and North American Soft and Hardwood.

"Vandecasteele has the resources and ability

to adapt to the sensitivity of the market and bridges the gap between sources of supply in Africa, Far East, South America and North America to Europe, in a matter of days." Genevieve stated, "This makes the company the first choice with many importers and merchants. Utilizing its most impressive and vast stockholding of Hardwoods and Softwoods coupled with strong environmental credentials."

Vandecasteele Houtimport has over 140 timber species in stock including the new addition of certified European Beech and Oak in Joinery, Prime, Super Prime grades and flooring. With a broad range spanning from the most expensive and rare hardwoods, to a full assortment of softwoods, Vandecasteele Houtimport provides a selection of wood available in various quantities and sizes.

100% of the softwoods stocked are certified. Over 30,000 m3 of the Tropical hardwood stock is now certified and this number is still growing. Vandecasteele has a dedicated team to ensure all due diligence is up to date. In addition to the strict due diligence process, Vandecasteele has invested in a forest engineer in Brazil to ensure full control on the CoC of the Brazilian timbers purchased. This makes Vandecasteele Houtimport the biggest



stockholder of certified tropical timbers in Europe.

"We provide large volumes of certified stocks, plus specialist dimension material, available for prompt dispatch," Genevieve said.

A feat within the company's range is Thermo Ayous, a thermally modified timber which is an excellent choice for cladding. Thermo Ayous is a knot free clear grade hardwood, which has been created using the latest thermal modification processes. Thermo Ayous Wood Cladding is a popular choice next to a whole range of traditional species such as Western Red Cedar, Siberian Larch, Oregon Pine, European Oak and many Tropical Hardwoods which are commonly specified by Architects.

Vandecasteele Houtimport maintains a strong stance on meeting sustainable and environmental aims within its business.



"Since 2000, Vandecasteele Houtimport has committed itself through the Corporate Sustainability Charter, by signing up to environmental objectives and exceeding applicable environmental legislation." Genevieve elaborated, "The charter is a management tool and incorporates the 17 Sustainable Development Goals of the United Nations. This year, we are proud to have obtained the internationally recognised United Nations "SDG Pioneer certificate". In terms of recent developments for the company, Vandecasteele Houtimport has seen expansion in numerous ways. Recently, the company has invested in the construction of a 37,000 m2 warehouse extension to ensure all products are centralized for fast picking and loading. The warehouse has also been installed with solar panels on its roof, in keeping with the company's sustainable business plan.

Genevieve explained that the company is also "installing a 3-mile racking system to speed up the picking of packs and we have upgraded our trading system which has been rolled out, allowing customers to browse and order packs, plus obtain full packing and quality details."

With a clear dominating presence through the company's 135 years of trading in wood, Vandecasteele Houtimport is continuing its commitment to its customers and suppliers and is striving to continuously improve its business. The company has also set a challenging goal to stock 100% certified timbers from 2025 and looks to the future with confidence.

For any more information, please see the details below.

T 0032 5643 3300
www.vandecasteele.be

Support your remote workers with a healthy and productive workspace



offer UK customers. The benefits of an active work environment have long been recognised in Scandinavia so we have years of experience to offer to a market that is still in its infancy in the UK.

"Our active furniture range offers a comprehensive solution for all parts of the office environment. Sit-stand desks are the most well-known product, but we also have sit-stand meeting tables, active sitting chairs and exercise equipment designed specifically for office use, such as desk bikes and walking treadmills. Moreover, our solutions extend to all types of workplaces including workshops, manufacturing facilities and warehouses to help businesses across all sectors prioritise employee wellbeing."

In line with this mission to help people move more during the working day, AJ Products recently teamed up with ukactive on a report to examine the impact of working practices on employee health and wellbeing. Tackling sedentary behaviour in the workforce is a comprehensive study into the state of workplace health that looks at the risks associated



Building and Construction Review is proud to announce that AJ Products has received our Product Innovation Award.

AJ Products is passionate about helping people create healthy and productive workspaces at affordable prices, providing innovative furniture and equipment to improve ergonomics, increase efficiency, and inspire creativity. "Our focus is always on how to improve the wellbeing of our customers, and we believe that these solutions should be available to everybody," said Laura Supple, Product Range Manager.

"We ask ourselves what problem we want to solve and then look into what we can offer to do that. For example, what would help people move more at work? Our Swedish background gives us an advantage when it comes to what we can



with long hours spent in sedentary positions at work, whether that work is office-based or remote, and what can be done to improve activity levels among the working population.

The report investigates how our office spaces must change as well as what companies can do to support remote workers and ensure wellbeing practices are sustained away from the physical workplace. It also examines real-world solutions based on case studies from businesses running successful wellbeing programmes to provide a 'best practice' guide for other companies to follow. The report is available to download and read for free on the website: <https://campaign.ajproducts.co.uk/tackling-sedentary-behaviour/>

Following the report, AJ Products will be continuing its partnership with ukactive in 2021. "We want to continue to raise public awareness of the health risks of prolonged sitting," Laura explained. "We believe educating people about healthy work



practices is just as important, if not more so, than offering the right solutions."

Indeed, with the sudden increase in people working from home, the need for healthy and productive workspaces has never been more pertinent. Employers still have a duty of care over remote workers and must ensure staff work just as safely and comfortably at home as they would in the office.

During the COVID-19 pandemic, AJ Products worked with its supply partners to provide affordable and readily available home office solutions to ensure home working did not compromise employee health. Then, as businesses started to return to work, the company also added a range of social distancing products to help employers protect their staff, such as belt barriers, screens and signs.



"As an employer, extra effort was required to ensure that AJ's philosophy of staying active at work was not lost while staff were working remotely. Each employee was given the option to choose furniture that would let them create a comfortable home office space so they could stay active at home and not fall victim to the common problems of poor posture and sedentary behaviour while working remotely.

"People chose the items that best suited them. For those with limited space at home, being given an exercise ball chair meant the difference between a sedentary work set up and having the ability to keep moving. Others were able to create a full sit-stand set up at home and work as they would have done in the office. We also tried to maintain our core value of workplace wellbeing by encouraging everyone to move around while taking phone calls, take short breaks to walk around the house and get outside for some exercise in their lunch hour."

Building on this work, AJ Products will continue to

develop its home office furniture range in 2021 to help employers safeguard their workers' health, safety and comfort when working remotely.

"We're bringing in a greater variety of sit-stand furniture designed specifically for home use, such as smaller desks that fit more easily in a limited space. This is a priority for us as home working looks set to become a much more normal part of our working lives.

"While we anticipate a return to the office in the new year, more and more companies are talking to us about introducing greater flexibility for employees and encouraging remote working one or two days a week."

So, what are the key things employers should consider when supporting their remote workers? "From a furniture perspective, the easiest thing you can implement is an active chair, like a Pilates ball or balance stool. These are at a reasonable cost, so everyone can feasibly implement one into their home office.

"We also encourage getting a desk. Any kind of desk and a decent office chair is better than nothing, but what would be best is a small sit-stand desk that can fit into a home office. If you're standing, you're more likely to move, and even small movements make a big difference to the work day.

"As well as this physical side of things, we also want to emphasise to companies the importance of employee wellbeing. You need to talk to employees about their mental and physical health, encourage them to take breaks and go for a walk in the fresh air at lunchtime.

"It's so important to create a culture of permissibility around this; people tend to feel guilty when working from home that they're not doing enough work or that their boss doesn't think they're working. Encouraging employees to take breaks and look after their wellbeing is just as important as providing the equipment."

To find out more information and how AJ Products can help you implement a healthy, comfortable, and productive workspace, head to the website or get in touch.

T 01252 359760
info@ajproducts.co.uk
www.ajproducts.co.uk

Go paperless with CheckedSafe

CheckedSafe, established in 2014 by co-Directors Gary Hawthorne and Darran Harris, was developed to provide simple and inexpensive compliance solutions that could be adapted for any industry. Now, CheckedSafe provides compliance services across several different platforms, notably commercial and plant hire vehicles, utilities, and many other service sectors that are monitored for compliance.



Overview

- Quick and effective risk assessment reporting with photographic evidence as a tag.
- Date, time and GPS stamped.
- Each check is time tagged providing 100% proof that the check has been done and time is taken, this CANNOT be emulated.
- Tailored Risk Assessment checks.
- Add time through the day populating them with photos.
- Individual and group notifications.
- All reported data available in real-time.
- Works On and Offline.
- All data stored securely.
- Risk Management Reporting.
- Reduce your corporate management liability.

As a SaaS platform, CheckedSafe has developed multiple apps and a web-based reporting system that is multi-functional and secure, offering organisations complete solutions to manage and protect their workforce as well as comply with legal and commercial requirements while reducing cost and liability. The system is also fully compliant with the regulatory bodies and has just achieved ISO 9001 and ISO 27001.

CheckedSafe has grown impressively over the years, from the beginning of an idea six years ago to now approaching 7,000,000 checks and 300,000,000 data points over 3,000 companies, including Kier, Amey, and Scottish Water, as well as being the preferred partner for Hitachi, Northgate and QBE.

"We are award-winning and innovative, and we are continuing to develop the product with new ideas," said Gary. "We've done well during the COVID-19 pandemic and we have made full use of online platforms like Zoom to deliver demos and meetings to our clients, both existing and new."

CheckedSafe's defect reporting, compliance management and fleet maintenance solution boasts a range of features. Compliant with DVSA, HSE and Border Force, as well as LOLER, PUWER and ADR, it allows for a quick and effective driver walk around with pre-use or first user checks. It also has the option for customised checks tailored to the user's requirements, and all reported data is available in real time and cannot be manipulated. What's more, there is a full audit trail with user interaction at each time.

For fleet management and maintenance, CheckedSafe offers scheduling, notifications and planning to enable 100% fleet compliance. The solution also provides a Full Workshop

Management feature, as well as the ability to upload paper or carry out digital PMI checks.

CheckedSafe also uses the GPS on the driver's mobile device to pin point their location when they carry out the daily walk around check, and this map location is included in the resulting report. The system also has several DVSA recommended checklists, and all checks can be made bespoke for any vehicle or piece of equipment. What's more, checks can be carried out regardless of Wi-Fi connection or phone signal. The checks are stored on the device and uploaded to the CheckedSafe Compliance Management System (CMS) when the driver regains signal.

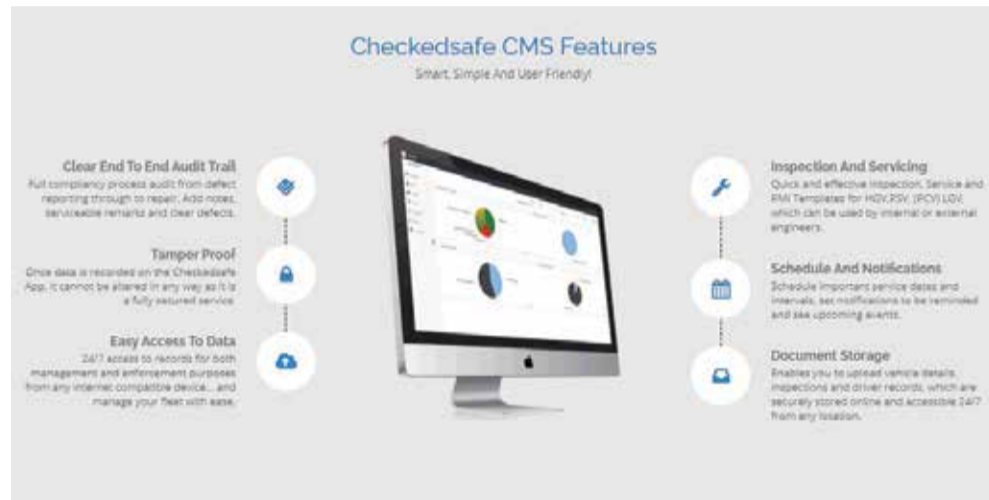
The software is designed for Android and Apple

so searching folders has gone and storage of information has gone – it's all in the cloud tagged directly to the vehicle.

"We've also used bespoke templates to suit the tasks, which is all DVSA compliant. The data is real-time and cannot be edited so you cannot fail to be compliant – CheckedSafe is definitely the product that has allowed me to streamline and grow my business.

"The system stores, schedules and notifies of all tasks required, which gives me and my client the ability to react quickly to the demands of busy operations and minimise downtime."

If this sounds like something you could benefit from, you can test drive CheckedSafe for 30 days



mobile devices, so can run on mobile phones and tablets, as well as being available on the TomTom platform. The driver's movements can also be tracked using the mobile device's motion sensors as the driver undertakes the check, ensuring it is being accurately completed as you can see the driver moving around the vehicle.

Ellisons Technical Services experience the benefits of CheckedSafe first hand, saving in the region of 15 minutes per job.

Owner Stewart Ellison said, "We are saving easily 15 minutes per inspection sheet. We also make other savings in the fact that everything is in the cloud and all data for the fleet is a fingertip away,




with no restrictions. The trial will give you full use of the App and CheckedSafe CMS – all you need to do is fill out the online registration form or download and complete the form and upload it back to CheckedSafe's website: <https://www.checkedsafe.com/free-30-day-trial/>

You can also request a demo before the trial, where CheckedSafe will have a chat with you about your business and current procedures, before running through the key features and benefits of CheckedSafe and any questions you might have. These demos usually take about 30 – 45 minutes, and CheckedSafe is very flexible with demo times and will work around your timeframe as much as it can.

If you would like to find out more information on CheckedSafe's full range of features and benefits, head to the website or get in touch using the contact details below.


T 01282 908429
info@checkedsafe.com
www.checkedsafe.com





Darran Harris
Co-Founder, Director and Solicitor

Darran is a Solicitor and Commercial Mediator with over 20 years experience specialising in Litigation (specifically Road Traffic issues) and Employment law. Darran has worked with major logistics companies and large blue-chip clients dealing with Litigation, Compliance and Road Traffic Incidents. Darran has successfully represented clients at Public Enquiries with Gary Hawthorne.



Gary Hawthorne
Co-Founder, Director and Transport Consultant

Gary is a Transport specialist with over 20 years experience at Operator level, local and national Government (including overseas) and as former Operator of a successful commercial operation. Gary is a Fellow of the Chartered Institute of Logistics and Transport, a Member of the Society of Engineers, a Member of the Institute of Road Traffic Engineers and a Commercial Mediator.

Go Paperless With CheckedSafe
Digital Defect Reporting
 HGV Daily Walk Around, PCV First User and Fleet Pre-Use Checks
 DVSA-HSE-Border Force-LOLER-PUWER-ADR Compliant

NTA NATIONAL TRANSPORT AWARDS
2019
 WINNER: TRANSPORT SUPPLIER OF THE YEAR

Compliance Management
 CheckedSafe Compliance Solution aids the reporting, rectification and monitoring of all defects

Defect Reporting Compliance Management Fleet Maintenance

NTA NATIONAL TRANSPORT AWARDS
2019
 WINNER: TRANSPORT SUPPLIER OF THE YEAR

Display your product at its best, showcase with MRDS



Margaret Reid Display Solutions, MRDS Ltd is a supplier of high quality retail and commercial display equipment for an array of industries. With its factory based in the Cotswolds, Gloucestershire, MRDS specialises in manufacturing bespoke stands, boards and cradles created primarily in MDF. Also, MRDS is proud to be able to offer a sheet material cutting service, both straight cut pieces on its beam saw and shaped, on its routers.

Established in 2017 by Margaret Reid, MRDS is a testament to Margaret's extensive experience working as an agent for companies supplying display materials for over 26 years.

"I started the company in February 2017." Margaret expanded, "I was an agent for a company that made display products for 20 years. Once that company had decided to close, I decided to set up my own factory."

MRDS has also been collaborating with Inasca, Spain enabling MRDS to supply



a wide range of leading names in the Tile industry for their showrooms. "I am an agent for one of the world's leading manufacturers of showroom stands which is a company called Inasca." Margaret expanded, "I've been working with them for 15 years plus which has enabled me to be able to provide a full portfolio of display products for customers."

With advanced knowledge on display materials including showroom stands, boards and cradles, MRDS is well equipped to provide solutions for customers looking for the best way to display their products. Providing its products for a multitude of different industries, MRDS takes pride in



producing high quality display products and ensuring its customers products benefit fully from its service.

"The core of our business is supplying display boards and stands for the ceramic floor industry." Margaret continued, "We also supply other industries including recently when we supplied wooden components for an eco-friendly coffin manufacturer."

One of the main benefits of MRDS is its extensive design capabilities. Alongside its reputable portfolio of products, MRDS is able to customise products to meet specifications of its clients. Using the company's CNC controlled equipment, MRDS can create tailor-made products and is able to customise products with branding, graphics and colour of customer's choice. The company also provides a bespoke service for customers requiring a custom built product. "We also offer a bespoke service, we design and develop the product with our customer to create a prototype for them. It's a very personal service and our team is extremely knowledgeable with years of experience behind them to help



assist our customers." Margaret said.

In addition to its display solutions, MRDS also maintains and provides its machinery for customers, to offer sheet material cutting services.

In regards to the on-going COVID-19 Pandemic, we asked Margaret about how the impact of the pandemic has affected MRDS and its industry. She told us that, "We have been very fortunate to be able to continue trading during the pandemic and we have even been able to explore new avenues of business and broadened into different industries. During the pandemic we have also manufactured COVID-19 signage for social distancing."

With a strong focus on providing high quality products to showcase its customs products, MRDS maintains a strong emphasis on constant development and pushing the boundaries of what they produce by primarily focusing on: the development of new display stands,

improving its board range and researching into new types of finish.

In terms of specific future plans for the company, MRDS has many exciting new developments currently planned to help the company broaden its industry range and provide solutions for more customers and markets.

"We are currently working on a range of counter top shelving displays and a range of clipboards." Margaret continued. "In January we will also be launching an ecommerce website which will enable us to be able to sell products through the website! This is something that we are very excited about and we are looking forward to the new opportunities it may bring!"

For any further information on the company, please see the details featured below

Contact
T 01453 835555
www.mrdsltd.co.uk



Email: sales@mrdsltd.co.uk
Website: www.mrdsltd.co.uk
Telephone: 01453 835555

Over 30 years' experience in the construction industry



Goland Recruitment Ltd was established on the 3rd of April 2012, followed by Goland Group Ltd on the 24th of January 2017 by John McGuigan.

"I used to work for a Northern Ireland company called Patton Group Ltd for 30 years and relocated my family to England in 1988, where I headed up and looked after the UK office, based in Milton Keynes. Patton's worked for several high-profile retail companies such as Selfridges Wonder Room, Arcadia Top Man - Top shop, Signet H Samuels- Ernest Jones, John



INTU Milton Keynes Carpark entrance refurbishment

Lewis among others. Unfortunately, Patton's went in to liquidation in 2012 after 100 years of trading." John continued, "It was following this, that I set up Goland to carry on the kind of work I was accustomed to and since then, we have developed our working relationships with many sub-contractors and suppliers so we are in a very good place to carry out all sorts of fit-out and refurbishment type projects. We have the experience, knowledge and expertise to be able to carry out high-end fit out and refurbishments wherever required throughout the UK."

With over 30 years' worth of experience within the construction industry Goland Group provides both the construction and recruitment industry with key services to support principle contractors, contractors and clients. "Goland Recruitment provides a variety of trades and labour for the construction and manufacturing industry, while Goland Group specialises in fit-out and



Selina Hostel Birmingham refurbishment

refurbishment projects within the Retail, Museum and Heritage Sector. Goland Recruitment not only supplies general labour and trade operatives in the construction and manufacturing industry, we also provide supervision and management personnel. We are also very capable to take on complete projects from start to finish for construction clients." Explained John.



Set up to fulfil all of its clients, temporary and permanent construction labour needs, Goland Recruitment provides highly qualified, health and safety inducted personnel who excel in their field of expertise, while providing the highest standard of workmanship. Goland Recruitment strives to ensure that all of its operatives are equipped with a suitable CSCS card, recognised qualifications and are health and safety compliant; Goland Recruitment's team is extremely experienced and equipped with advanced knowledge working within their specialist fields.

Goland Group offers a wide range of construction services for supply and fit, including all aspects of, metal frame walling and ceilings and drylining; decorations; labour only bricklaying, carpentry and joinery; site strip outs and builders clean.

"We can supply labour only if that is all they require or we can take on the complete package

including Project Managing on their behalf." John explained further.

Covering the UK and Ireland, Goland Group work in collaboration with a wide variety of different sized companies within the construction and manufacturing industry and prides itself on ensuring that no job is ever too small and no challenge too complex. John explained, "We work in collaboration with a number of other construction and manufacturing companies, so no job is too small - we will give 100% no matter what the challenge is."

A very complimentary service Goland Group also provides and is well worth noting, is advice and guidance for all aspects of health and safety, from concept to completion of a project. Services such as, but not limited to include, CDM-A; health and safety plans; method statements and risk assessments; project day filing and site set-up systems; site inspections and audits; accident investigations; and bespoke documentation.

Within recent years, Goland Group has expanded significantly which has been echoed in its procurement of a larger office and warehouse

facility based in Milton Keynes. Providing a larger space and prime location, Goland Group has obtained a far more superior location making them even more accessible.

With the on-going effects of the Coronavirus (Covid-19) pandemic, many industries and businesses have felt the pressure of change in terms of workloads, staffing and new regulations. We asked John how this has affected the company, he told us that "COVID-19 has had an impact on many of our installations but we have managed to stay afloat, trading water waiting for what will clearly be a new normal. Fortunately, through innovative management assisted by the variety of government initiatives and schemes, we have been very fortunate in that we have not had to make any staff redundancies."

In terms of the company's future plans, John stated that, "We are looking at introducing the manufacturing of high-end bespoke fit-out fixtures and fittings."

For any further information, please see the details below:

T 01908 102078
www.goland.group



Northampton Museum showcase installation



Long gone are the days when lower floor living meant a dark, damp cellar with no headroom, Glatthaar Fertiggeller a German company founded in 1980 are on hand to deliver modern dry and comfortable basements. Our company has created concepts that provide their customers with warm, bright and spacious living areas.

Building a house is a long term project and probably the single biggest investment that you will ever make, and if you are planning to put a basement below your new home then the right choice of who delivers your basement is vital.

Quality and competence, rather than price should be your primary consideration, poor quality products and/or installations

are not easily remedied and can prove expensive and a nerve racking experience. Glatthaar-Fertiggeller specialises in all aspects of basement construction including design, calculations, off-site manufacturing, on-site building and many other additional services. Glatthaar is the only company in England that delivers a basement system and not just components for basement construction.

This is the reason why Glatthaar is the only basement company in GB that can offer an Insurance Backed Warranty against Water Ingress for our basements.

Each of our projects are Fixed Price Projects, we build, on average 5000 basements across Europe each year.

Contact
T 01932 344454
info@glatthaar.co.uk
www.glatthaar.co.uk
www.glatthaar.com



Heartlands Metal Craft Ltd



Heartlands Metal Craft Ltd, based in the West Midlands, the heart of manufacturing, offers quality manufactured gates from wrought iron designs, to steel framed composite clad gates, plus aluminium and wooden options. We also have a vast range of gates and railings from our unique Period Cast Iron Range, inspired by the 19th Century designs originating in Falkirk, Scotland, at the famous Sun Foundry circa 1892.

Heartlands Metal Craft offers a full comprehensive nationwide installation service for all our products detailed above and below including gate automation and access control. As automation specialists, Heartlands provides quality installations exceeding compliance to today's regulations in safety and quality build. Our extensive knowledge in gate automation and access control equipment will deliver you with the best effective system design for your chosen entrance gate, and control from initial assessments through to a thorough handover on completion of our installations.

With our production range extending to balconies, indoor and outdoor balustrades here at Heartlands, we believe we are a company with best practice in operation from receipt of the initial enquiries to site surveys, CAD drawings for customer design approval through to quality production and installation.

Please don't hesitate to contact us for further information at: www.heartlands.co.uk or call 01384 900260 or email: info@heartlands.co.uk

TRACKED CARRIERS

Tracked Carriers Ltd,
 01621 810999 / info@trackedcarriers.co.uk
 The Forge 154 Maldon Road, Tiptree, Essex CO5 0PH
www.trackedcarriers.co.uk

Tracked Carriers are incredibly versatile machines with huge capabilities and many uses.



Low maintenance and emission free <<



Capacities up to 2,000kg <<



From just 600mm wide <<



Range of attachments <<

Ability to climb stairs <<



Fully proportional remote control <<



Contact us to discover how a Tracked Carrier can assist your project!



Bello Armchair



Serena Armchair



Pedro Armchair



Ida Armchair



Etta side chair



Hairpin Armchair



Suppliers of quality bespoke and "off the shelf" contract furniture.

Call us now to discuss your requirements 03301137899 or email info@connect-furniture.co.uk

Laminate table tops with Aluminium Edging



Aluminium Gold brushed edging



Aluminium Champagne brushed edging



Aluminium Copper brushed edging



Aluminium Silver brushed edging

Tel: 0330 113 7899 | Email: info@connect-furniture.co.uk | Web: www.connect-furniture.co.uk

Hadspen Quarry Ltd

Hadspen Quarry Ltd is a supplier of British Blue Lias Limestone used traditionally for walling, Hadspen Quarry has now launched a range of Blue Lias flooring, worktops, wall tiles, cobbles and much more. Excavated directly from one of their two quarries in Somerset, Hadspen Quarry is a family run business with a keen eye for attention to detail ensuring you get the quality needed for your project.

The versatile and luxurious qualities of British limestone means it can be combined with an array of other materials throughout any project to create spaces that are unique, organic and well designed.

Natural stone can be used as a finish not only on the exterior as a walling or cladding stone but also lends itself incredibly well to interiors. It never goes out of style and the recent boom in the return to the use of natural British stone is the proof in the pudding.

Hadspen Quarry's range of Blue Lias Flooring, Wall Tiles, Flagstones, Walling Stone and Cobbles have been used extensively at the prestigious new development The Newt In Somerset, as well as other projects both big and small. They supply and deliver custom-made Blue Lias flooring for customers across the UK.

For a rustic cottage look the leathered blue lias is a good match for time worn flagstones, while the flamed & brushed finish is a new flagstone look.

For a modern aesthetic the two honed options, either our marble bed or fossil bed of Blue Lias provides a contemporary finish while retaining the classic timeless look of a British Limestone floor.

If you need expert advice to help choose the perfect stone for your project, don't hesitate to get in touch with the team on 01963 351205 or email info@hadspenquarry.co.uk



Handmade in Brighton



Designer-makers Handmade in Brighton are award-winning creators of stunning live-edge tables. These bespoke statement pieces are hand-crafted using traditional techniques, beautiful hardwoods and unique resin-embedded items such as large ammonite fossils or antique keys to reflect each client's story.

Handmade in Brighton is a designer-maker partnership launched in 2015, producing uniquely crafted tables to a beautifully high standard with particular attention paid to the nuances and character of the natural timber being used. Always prototyping new ideas, the creative partnership of Jude Payne (Royal College of Art trained artist-designer) and Jonathan Vigour (dyed-in-the-wool artisan-craftsman) has gone from strength to strength over the last few years, bagging no less than five Best of Houzz awards and a number of 'honourable mentions' in national interiors publications.

Jude's take: "We love making tables that really respond to our clients' own lives - they are totally involved in the design and timber selection, and it's great to know that we are making a centrepiece of home life that will stay with their families for many years."

Jonathan's take: "As an artisan workshop we are committed to a biophilic approach to working with these beautiful timbers, bringing an experience of and connection to the natural world into our 21st century lives."

T +44 (0)7967 541185
hello@handmadeinbrighton.com
www.handmadeinbrighton.com

Best of houzz 2016-2020

HANDMADE IN BRIGHTON.COM
 by *Payne Vigour*
 artisan designer-makers

instagram.com/handmadeinbrighton
 facebook.com/handmadeinbrighton
 www.handmadeinbrighton.com
 hello@HANDMADEinBRIGHTON.com

+44 (0)7967 541185

award-winning creators of stunning live-edge tables and bespoke furniture

Harlequin Cascade now with BioCote® Antimicrobial Protection



Dance Revolution

The Harlequin Cascade vinyl that performers love, now with added protection

Harlequin Cascade has been the choice of the world's most prestigious dance and performing arts companies for many years because dancers know and trust the floor.

But in these difficult times, it is more important than ever to focus on improving hygiene, so Harlequin have now produced a new, improved Harlequin Cascade with BioCote® antimicrobial protection.

The BioCote® Silver ion technology is manufactured into the floor and creates a surface upon which microbes, such as bacteria and viruses, cannot survive. This added technology has no effect on the appearance or performance characteristics of the Harlequin Cascade.

For product information and advice contact our technical team enquiries@harlequinfloors.com or call +44 (0) 1892 514 888



HARLEQUIN
www.harlequinfloors.com

LONDON ♦ LUXEMBOURG ♦ BERLIN ♦ FORT WORTH ♦ MADRID ♦ PARIS ♦ PHILADELPHIA ♦ SYDNEY ♦ HONG KONG ♦ TOKYO ♦ BRNO ♦ LOS ANGELES

Why do the world's leading dance companies choose Harlequin floors?



Professional dancers can spend hours working in a dance studio, it is their place of work and should offer a safe environment fit for purpose. The floor is a dancer's most important work tool; not only is it the canvas for their creativity, it also gives them protection against slips, falls and longer-term stress injuries.

Experienced dancers can judge a good floor instinctively as to whether or not it feels right. And if it feels right they can effectively forget about the floor and concentrate on putting all their focus and concentration into the artistic performance. A confidence that comes from a reassurance they are not going to slip and fall, that lifts can be performed safely and on landing from jumps the response of the floor consistently returns the right amount of energy absorption. Quantifying this subjective rating of a floor into a series of repeatable tests is no simple task. Anyone specifying floors for dance should remember that dancers may not be the commissioning clients, but they are the end users. Major dance companies understand this, which is why it is not uncommon to ask their dancers to "test" floors before the final choice is made.

It is a common assumption that a well-designed sports floor will suit the needs of dancers, but this is not the case.

There are some critical factors that distinguish the requirements of dance from those of sports played on a sports floor. Many sports require a firm floor which allows balls to bounce predictably. By contrast dancers need more absorption from the floor to protect them on landing from jumps. A good dance floor instills confidence in dancers to give full expression to their creativity, safe in the knowledge the dance floor will offer a consistent response.

Unlike sportsmen who wear increasingly high-tech air-cushioned shoes to give grip and protect against impact injuries, the modest ballet shoe



has barely changed in design since the mid-18th century. Made from soft leather, canvas or satin, the ballet shoe is very flexible, has a thin sole and offers little protection for the wearer.

But not all dance floors are the same, only a floor developed specifically for dance will do. There may be a temptation to specify floors for aesthetic or budget reasons, or to specify sports floors in the mistaken belief they will be suitable for dance but there have been some high-profile examples where floors have had to be replaced by a dance

company after the building is complete and dancers have their first experience of dancing on the floors.

Generally, dancers should refuse to perform on unsuitable floors and demand the right to have a touring floor that has the same absorbent characteristics as the floor installed in their rehearsal studio. A dance floor should be neither too supple nor too soft. A hard floor has the effect of causing serious return shock waves and can bring about injuries or premature wear in the cartilage. A soft floor causes the muscles, and therefore the tendons, to work harder. Additionally, a floor that is too soft can be dangerous for dancers because of the effect of surprise.

The flooring manufacturer has a role to play in ensuring dancers have a safe environment in which to rehearse and perform.

Harlequin is widely recognised as the world's leading authority on dance floors. As an enlightened manufacturer Harlequin has always



worked closely with the dance community to develop floors that dancers want to dance on. Flooring products in the Harlequin portfolio were typically evolved to meet the specific needs of a particular dance style and have been developed in conjunction with dancers themselves.

Aware of the high injury level among dancers, Harlequin is an active supporter of IADMS (International Association for Dance Medicine and Science) and of NIDMS (National Institute of Dance Medicine and Science). NIDMS through shared expertise and a network of multidisciplinary partners, is working to provide better and more affordable access for all dancers to high quality, evidence-based, dance specific health care and dance science support services.

Leading dance companies from around the world trust Harlequin to keep their dancers safe in their

rehearsal dance studios, on stage and, more recently, whilst dancing from home.

But this assurance of quality is not only applicable to elite dancers. It is equally important to provide amateur dancers in performing arts colleges, universities and schools with the same quality flooring. Aspiring dancers need protection too if they are to avoid cutting short their potential dance careers.

New improved Harlequin Cascade dance vinyl with BioCote® antimicrobial protection

Harlequin has just launched a new, improved version of their highly regarded Harlequin Cascade performance vinyl. Harlequin Cascade is the ultimate heavy-duty dance floor and is the dance floor of choice for the world's most prestigious dance companies, dance schools and studios, universities and colleges. Ideal for many genres of dance including ballet, contemporary, modern and many others, it now comes with Biocote® Antimicrobial Protection, an added ingredient that helps keep the floor hygienically clean so reducing the risk of cross contamination and infection.



In these difficult times it is more important than ever to focus on improving hygiene and this new improved Cascade with Biocote® means that microbes, such as bacteria and viruses will not survive on the surface of the floor.

Biocote® integral antimicrobial protection uses silver ion technology which is manufactured into Harlequin Cascade and is proven to offer protection for the expected lifetime of the product; it will not wear out or wash off.

The result is a floor which is easier to keep hygienically clean, therefore reducing the risk of cross contamination and infection by working constantly to reduce the presence of microbes on the floor.

There is no doubt, the choice of flooring is critical. For over 40 years Harlequin has been the performance floor of choice for the world's most prestigious dance and performing arts companies, theatres, venues and schools.

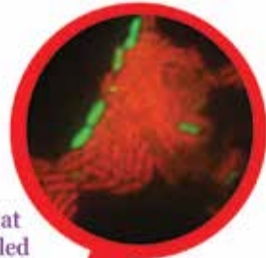
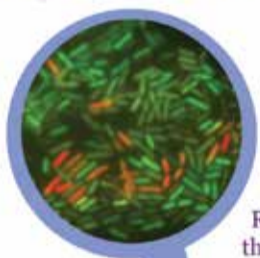
Harlequin's experience and reputation are founded on the design, manufacture and supply of a range of high quality portable and permanent sprung and vinyl floors chosen by the world's leading venues - from the Royal Opera House, to the Bolshoi Theatre, the Paris Opera Ballet to Sydney Dance Company.

Harlequin offers free advice to ensure dance companies, schools and venues install dance floors best suited to their particular use.

For more information, please visit www.harlequinfloors.com or call +44 (0)1892 514 888.

Unprotected surface

BioCote® protected surface



Red staining indicates that the bacteria have been killed



A green way to improve wellbeing in the workplace



combining their wealth of experience to produce some of the UK's most stunning features and living wall designs.



Building and Construction Review is proud to announce that USP Creations Ltd, trading as Wonderwall has been chosen to receive our Outdoor Building Services Company of the Year 2020 award. Wonderwall was chosen for its outstanding range of innovative garden products which are helping to breathe life into places and spaces across the country.

Established in 2016 by Rick McKeever, Director of UPS Creations, Wonderwall produces high quality and unique decorative garden products. With a team that is always thinking outside of the box, creativity is woven into its company culture, focusing on designing and developing products which will transform environments inside and out. The team comprises passionate and knowledgeable horticultural specialists,

Rick said, "We pride ourselves on providing reasonable prices without sacrificing quality. We also look after our customers throughout the whole process; we offer on-site visits and provide our clients with consultancy and services across the whole journey."

With Wonderwall's vertical planters, the only limit is your imagination. Providing an excellent opportunity to create diverse and bespoke garden designs, they are perfect for

producing living wall designs for a stunning internal or external feature. Not only are they aesthetically pleasing, but they can also help reduce your carbon footprint, save energy, improve air quality, and boost staff morale and wellbeing.

And the need for addressing mental health and stress concerns in the workplace has become even more noticeable during the COVID-19 pandemic. Rick added, "Mental health is even more relevant now than ever! Mental health and wellbeing are a big focus for us going forward, as well as the environmental benefits and increase in biodiversity a living wall can bring."

Wonderwall certainly has some exciting plans to look forward to next year, after a successful 12 months despite the challenges of COVID-19. Rick added, "We have been



heavily involved in the Ignition Project at Salford University, for which we were chosen as a partner. The project is looking at ways of implementing green infrastructure, how companies can reduce their carbon footprint, and become more environmentally friendly. We will also be working on a project with Bentley Motors at their manufacturing plant in Crewe."

Rick continued, "We've got some big projects coming up, so watch this space – not just in the UK but around the world! There is also a brand new product that we have been developing over the past years that will be launching in the new year. There are numerous different developments going on for green infrastructure, and we've got plenty more to offer the market in addition to living walls, such as green roofs and water retention products – there's lots of progress going on behind the Wonderwall!"

If you would like to find out more information, head to the website or get in touch using the details below.

rick@wonderwall-it.co.uk
www.wonderwall.direct

Outdoor Building News

Heritage and Contemporary Homes Enhanced by Shou Sugi Ban®

Do your build projects demand construction materials that deliver visual aesthetics, environmental sustainability and long-lasting performance? Let us introduce Shou Sugi Ban® charred timber cladding.



Exterior Solutions has learnt and developed the traditional Japanese technique of charring timbers. Our expert team created the Shou Sugi Ban® range to offer a variety of coloured, grained and textured finishes. From award-winning contemporary design to the sensitive renovation of heritage sites, our charred timber cladding fits the brief.

All our sustainably-sourced timbers undergo a controlled burning process at our on-site workshop, with exceptional quality controls. The natural resins are drawn out and carbon forms the surface layer. It seems contrary, but the process of charring timber increases its resilience to burning, as well as providing natural weatherproofing.

Whether used internally or externally, our timber boards are supplied fully treated and ready to install. Low maintenance and with a lower environmental impact, they can provide a practical and impressive finishing touch to your build project.

Download the Shou Sugi Ban® catalogue from our website, or contact Exterior Solutions on 01494 711800 for samples, or to arrange a visit to our Buckinghamshire showroom.



Exceptional Coverings & Finishes for world-class projects.

Charred Timber
Hardwood Decking
Hardwood Cladding

We are manufacturers, suppliers and distributors for the finest materials.

01494 711 800
www.exterior.supplies



Dropshot Farm, College Road North,
Aston, Clinton, HP22 5EZ



TIMBER GARDEN BUILDINGS

'Quality Timber Buildings For All Your Needs'



Warwick Buildings
Nightingale Lane
Southam Road
Long Itchington
Warwickshire
CV47 9AT



GARDEN OFFICES
TIMBER GARAGES

01926 815757 | www.warwickbuildings.co.uk

Bluerun Ltd

Bluerun can create bespoke timber items, from bookcases and window frames to countertops and door sets. Whether you need a one-off item or a production run of doors and windows for a housing development, a new interior for your premises or a bespoke shop front, we are perfectly placed to deliver exactly what you need.

Our staircases are widely considered to be works of art, and they are all designed in house using old fashioned

pencil and paper. We have designed and manufactured various styles of doors for the domestic market in 2020, some of which are on our website.

A new gate for your premises? You tell us what type of timber and we can manufacture those as well – very popular in 2020.

We can quote for your requirements whether it's a new bedroom unit or a complete run of replacement windows

and/or doors, or for the commercial clients, perhaps a new reception counter or a shopfront, or anything in between, please contact us with your requirements.

Bluerun has the capability to spray your articles to a finish, and we can usually colour match to your requirements if needed.

Contact us on dee@bluerunltd.co.uk, www.bluerunltd.co.uk and find us on Facebook.



Kitchen & Bathrooms News

Avoiding landfill & saving millions



As landfill taxes rose above £90 for the first time earlier this year, there is now more pressure than ever to recycle waste materials. More efficient recycling schemes across the UK has meant that, despite the rising costs of landfill, the amount of money it generates has lowered by almost £300m since 2014.

Earlier this year Dunton Technologies were contacted by a remediation contractor that had been awarded a contract to assist with the redevelopment of a former gas works. The 16 acre brownfield site used to be home to two large gasometers, which were demolished back in 2016.

Dunton were called upon to provide their expertise in the disposal of potentially hazardous waste soils that were to be excavated from the land. Of course, with large sites, the significant volumes of waste material mean that even the saving of a few pounds per tonne can end up equating to tens of thousands of pounds by the end of the project. This is where Dunton's vast experience in the handling of hazardous materials, combined with their strong network of UK waste treatment facilities, ensures that the client will always benefit from the most cost-effective distribution of the waste.

Dunton's Environmental Manager for this project, Adrian Jefimiuk writes:

"Whilst saving our clients money is a primary focus of our waste disposal services, we find that the main reason many of our customers choose Dunton is due to a solid reputation for ensuring 100% compliance with every tonne of material we handle. We understand the importance of providing a trustworthy and reliable service in order to provide our clients with peace of mind."

Having worked closely with our client since May, Dunton have already handled over 4000m³ of waste soils, saving the client over £700,000 in landfill taxes.

www.duntonenvironmental.com



nuie

Heating
for luxury
spaces



Exclusively
designed for
everyone

FIND YOUR OWN IDEA OF PERFECTION

*Whoever you are, wherever you live,
you deserve a warm, inviting home.*

nuiebathrooms.com

J & P Building Systems

J & P Building Systems is pleased to announce that its popular ISOPRO® and ISOMAXX® range of thermally-isolated balcony connection products have recently been issued with a European Technical Assessment (ETA 17/0466). The document provides verification by all European building authorities of the structural capabilities and security of ISOPRO® and ISOMAXX® under fire conditions.

ISOPRO® and ISOMAXX® products are typically

used to provide connections between the building structure and exterior concrete balconies, but are also used to support walkways and other exterior concrete features.

In addition to providing secure and reliable connections, ISOPRO® and ISOMAXX® also prevent thermal bridging at the connection points, which improves the thermal efficiency of the building envelope and so helps prevent heat loss, condensation, and mould growth in

interior rooms. A copy of the European Technical Assessment (ETA 17/0466) and details covering the technical performance of the full range of ISOPRO® and ISOMAXX® thermally insulated balcony connections can be downloaded from www.jp-uk.com.

As always, J&P's friendly sales and technical teams are available to give advice on your project, and can be reached at enquiries@jp-uk.com or by telephone at 01844 215200.



Architectural hardware at its best



Founded in 2010, Zoo Hardware has grown rapidly over the last ten years and now features a team of over 40 expert staff members.

One of the company's notable new ranges is the Flexifire intumescent ironmongery protection products, which add an extra level of protection in the event of a fire. These are ultra-thin and flexible high performance intumescent sheets which feature high levels of expansion and insulation, preventing heat transfer on ironmongery rebated into timber doors. These sheets are safe to handle, with no fibres or irritants, and are only 1-2mm thick, ensuring minimal rebating is required. What's more, Flexifire products are flexible and clean to work with, with the ability to bend without cracking. They are also easy to cut into shape with household scissors and can be provided with or without adhesive backing. Finally, Flexifire intumescent sheets are unaffected by moisture, humidity, atmospheric pollution, and other common industrial and household chemical substances.

If you would like to find out more information on Zoo Hardware's full range of products, head to the website or get in touch using the contact details below.

T 01228 672900
sales@zoo-hardware.co.uk
www.zoohardware.co.uk



Zoo Architectural Hardware | Architectural Products inspired by design

Designers and suppliers of architectural door hardware including door handles, knobs, locks, hinges and more.

All of our products are produced to the highest quality in aluminium, brass, steel and zinc.

For more information call +44 (0) 1228 672900 or visit www.zoohardware.co.uk

Premium hardware supplies with customers at the heart

Building and Construction Review is proud to feature Hardware Warehouse for our BCR Recommends profile.

Established in 2012 by Katie and her partner Rob, Hardware Warehouse has seen fantastic growth in the last few years, selling metal and PVC profiles, metal sheets, storage hooks and garden accessories to both domestic and commercial customers.

Offering next day delivery as standard, Hardware Warehouse boasts a large stockholding but with no minimum order, delivering stock to the customer's site and even offering morning delivery if they need a particular product for work that day.

The company's ongoing expansion has continued throughout 2020, despite the challenges of the COVID-19 pandemic.

"Initially it was very worrying working out how we were going to work within new restrictions and sort the orders in the warehouse," said Katie Clarke, Director. "Our team has been incredible, working long hours and doing their bit to keep us going."

"We saw a huge increase in domestic customers due to everyone being at home doing DIY during the lockdown. This increase



in popularity had a knock-on effect and meant that a lot more trade customers have found us. So, we're now focusing a lot on the commercial side of what we do, expanding our range to meet trade requirements."

Of course, this expansion has only been possible thanks to Hardware Warehouse's particular emphasis on excellent customer service. "As well as the products we sell, we focus on our customers, which continued despite all the craziness of the pandemic. This dedication saw us through and helped us come out the other side even stronger than we were."

As well as specialising in profiles, a range which is widely respected for its quality and high stock levels, Hardware Warehouse is looking at sourcing bigger ranges of other items in its portfolio, notably its brass line. "This is very popular and we want to expand the range of sizes



we offer to address customer demand. With our increase in trade customers, we're getting more enquiries for different items – other companies have stopped selling a lot of products so we're one of the only places that sources some of the things our trade customers need."

This growth is in addition to developing a more sustainable plastic range. "We're looking at offering more environmentally friendly products," Katie said. "We've been doing a lot of research on products made from recycled plastics and how we can offer these to our customers, so it's something we really want to focus on as we move forward."

"We'll also be expanding the company as a whole. We're recruiting for more roles and we're growing our website to make it more automated and efficient. We're adding functions that are bespoke to trade customers, so there will be ways for them to know when the next delivery is so they know when to place a big order, there will be a more efficient quoting system, and there will also potentially be the option to see prices ex-VAT. We really do look to adapt and grow all the time."

If you would like to find out more information on everything Hardware Warehouse offers, head to the website or get in touch.

T 0330 333 5030
info@hardware-warehouse.co.uk
www.hardware-warehouse.co.uk

HARDWARE WAREHOUSE

Online retailer of high-grade DIY materials



Metal & Plastic Profiles • Sheet Metals
 Adhesive Panels • Hooks

Next Day Delivery as standard | Quantity Discounts | Buy Today

Call 0330 333 5030

Email info@hardware-warehouse.co.uk

Visit www.hardware-warehouse.co.uk

BCAL Consulting



BCAL Consulting is a Structural and Civil Engineering practice based in Wellingborough, Northamptonshire. It was established in 1983 and has expanded to include very successful Principle Designer and CDM adviser services. BCAL Consulting has the skills and organisation to lead projects from inception to completion. We advise on all stages of the construction engineering process, from pre-acquisition assessments to post occupancy. We work on projects throughout the country and are situated in an ideal geographical position to be able to travel to sites easily.

Our experience has enabled us to develop a clear objective to provide efficient and well-engineered design solutions within a framework of effective cost control, with an uncompromising commitment to quality and service. We take pride in the fact that a significant portion of our work is repeat business from satisfied clients, or recommendations from fellow professionals. We believe this is testimony to the quality of service and commitment we offer to each and every commission.

BCAL Consulting is at the leading edge of the use of Building Information Modelling (BIM) and the production of 'Digital Twins' alongside the physically constructed project. We invest heavily in the latest software and training to ensure that we can add value to a project. BIM enables the information exchange throughout the design team to ensure an effective and efficient design.

At BCAL Consulting we pride ourselves on the service we give to our clients. If you have a project you would like a quote for, please get in contact either by phone on 01933 440024 or email: enquiries@bcal.co.uk

Proceeding with confidence



3 Reasons Why You Should Consider Laser Scanning On Your Next Build Project.

1. Reduced Project Liability – Laser scanning collects a million data points per second, by completing scans from multiple vantage points, a singular 3D Pointcloud can be created. This allows the opportunity to highlight areas of interest and reduce lesser unknowns with ease.

2. Time & Cost Effective – Using Laser scanning, both the captured Pointcloud and design work can be viewed and worked on in 3D. This steps away from traditional 2D to 3D conversions ordinarily required, saving clients both time and money.

3. Streamlined Work Flow – A holistic approach to project work, all project stakeholders can extract their deliverables from the same data like never before.

With vast and varied experience within the surveying industry, it is safe to say Metron know a thing or two about how to make your projects run smoothly. Working with a variety of clients nationwide, Metron is the go to name for all your survey requirements.

For a no obligation chat to find out what we can do for you, give us a call on 020 3916 5980. If you wish to find out more about our company and the projects we work on, you can also give us a like or follow on LinkedIn, Instagram and Twitter.

Business Finance Brokers Ltd

Business Finance Brokers Ltd has a wide range of funding sources available providing new and existing customers with access to Hire Purchase, Finance Lease and Operating Lease. We can help your business secure asset finance from 12 up to 84 months.

Hire Purchase - VAT payable upfront* with the deposit. A flexible option so your business can easily budget for the asset and take advantage of the flexible repayment terms and fixed interest rates, with payments tailored to suit your cashflow throughout the year. *Possibility of deferring the VAT up to 3 months.

Finance Lease – full use of the asset without actually owning the equipment. You continue leasing the equipment at the end of the primary

period or sell the asset and retain up to 100% of the sale of proceeds. VAT is paid with each payment (especially useful if not VAT registered or to help with cashflow).

Contract Hire is an agreement to rent an asset for a specified period of time. Document fees are payable to the finance company.

To see how we can help you get the funding your business needs please call Kevin or Adam on 01455 635677 or email info@businessfinancebrokers.co.uk or visit the web site www.businessfinancebrokers.co.uk



J & P BALCON®

INSULATED STEEL BALCONY CONNECTION SYSTEM

Easy Balcony Positioning Tolerance.
Excellent Load Capacity.
Thermal Insulation Performance to Meet Part L.

- Designed for your specific balcony to concrete connection
- Cost-effective, high quality components
- Excellent thermal insulating properties
- Easy to set into position with no need to cut edge shutter
- High load performance with fast installation
- Very low deflection at the connection to the structure
- An approved LABC Registered Detail
- Quality management to BS EN 1090-1 and ISO 9001:215

LABC Registered Details

Need a high-quality and cost-effective insulation system for your current project?
Contact us today to learn more, or visit our website at www.jp-uk.com

J&P Building Systems Limited 01844 215 200
Thame Forty, Jane Morbey Road, www.jp-uk.com
Thame, Oxfordshire OX9 3RR enquiries@jp-uk.com

J&P Building Systems Ltd. is a subsidiary of:
 ■ H-BAU Technik GmbH ■ JORDAHL GmbH

Bespoke passive house in Manchester from Passive Building Structures

Passive Building Structures is completing a large new passive house in Didsbury, Manchester, offering a contemporary take on the surrounding traditional architecture.

As a leading ICF building envelope specialist, Passive Building Structures is using its fully integrated system to meet

passive house airtightness, U-values and thermal bridging requirements, creating a building with a floor area of just under 5,000 ft² over three floors.

All of the floors, walls and the roof meet a U-value of 0.11, which includes an insulated raft foundation with two layers of 150 mm EPS.

This is in addition to ICF walls which feature a 200 mm concrete core sandwiched between an inner layer of 108 mm EPS and an outer layer with 108 mm plus another 102 mm EPS.

Passive Building Structures' rapid roof ultra-panel, which consists



of 300 mm EPS, has been engineered to eliminate any purlins or collar ties, meaning it promotes open plan living.

What's more, the company supplied and erected internal load bearing ICF walls, and the house also boasts precast concrete floors and internal stairs on two floors.

There is also a 1.5 metre cantilever to the front elevation on the first floor, which had to be offset for protection of tree roots on site. The cantilever is fully incorporated into the building as well as being fully insulated, ensuring zero cold bridging.

It has been created with reinforced concrete beams integrated into the wall and insulated raft foundation, eliminating the need for exposed structural steels. The building will also soon boast passive house certified windows and MVHR.



Key to Passive Building Structures' offering is the fact it delivers a complete thermal building fabric on its projects.

Incorporating unique details into its system, all of Passive Building Structures' components are interconnected and are integral elements to the overall project. The system is poured monolithically from floor to floor.

Specialising in delivering bespoke, high-end developments, some of Passive Building Structures' previous projects include architect Donn Ponninghaus's RTE Home of the Year winning passive house in west Cork.

You can follow the Didsbury project on the company's Instagram page: [@pbs_icf](https://www.instagram.com/pbs_icf)

www.instagram.com/pbs_icf



Don't just imagine it, make your dreams come true.

Bespoke, luxury, and timeless: that's what you'll get with our contemporary and modern self-builds. Every home is built to the highest standard, with the lowest energy demand.

We offer a tailored process to each and every one of our

clients. You are unique, and so are your desires. That's why your development should be as individual as you are.

We want to inspire. We want to exceed expectations. We want to create the most exceptional home you could imagine.

Your dream home awaits



Contact us to discuss your plans:

 **0330 133 2511**

 **info@pbsltd.uk**

 **pbsltd.uk**

 /pbs_icf

 @pbs_icf

Seaton Beach apartments



Seaton Beach apartments is the first Multi block development to be certified as PassivHaus Plus in the United Kingdom. The project is located in the picturesque coastal town of Seaton in South Devon.

The unique project included the demolition of an existing residential property and construction of the five storey luxury apartment block. Great care was taken with the unique construction methodology to ensure accurate detailing and close quality management were both championed.

However, the eight PassivHaus Plus apartments were delivered to specification and obtained an air permeability test result of 0.05 air changes per hour. Due to the extremely high finishing standards and exceptional specification including a 16 kWp array of photovoltaic panels, uninterrupted sea views, allocated secure parking, lift access to all floors each apartment



and a high comfort sophisticated mechanical ventilation heat recovery (MVHR) system.

The apartments command between £600,000 524,000 and £1,000,000 in value. Seaton Beach is one of the most distinctive, sustainable and sophisticated developments in the South West of England & is 2050 ready!

Mike Webb MD of Seaton Beach retrained as a certified PassivHaus consultant & now advises other developers on how to achieve this excellence standard.

www.seatonbeach.co.uk



50 year old product makes dramatic comeback to help beat the virus

The current necessity for virus protection is why the Melaphone® Speech Unit is enjoying renewed success. Its unique design eliminates the muffled sound of speech through a screen. Completely air-sealed, certified to ISO 14644-1 Class 5

Class 5, it is specified by architects and designers for hospitals, laboratories and clean rooms. This simple but ingenious invention requires no servicing, no electricity and is very easy to keep clean.

The Melaphone® is built into our Defender Virus Screens which the company has supplied to hundreds of UK

doctors' surgeries, medical centres, and pharmacies. Screens are made to the highest quality, providing hygienic, sleek and permanent protection in any environment.

As a stand-alone unit the Melaphone® can be easily retro-fitted. It is available from stock in the original brushed aluminium, in stainless steel, in white powder-coated aluminium and now in Himacs acrylic-resin—our most popular model. All 'MADE IN THE UK'-by us in London

T +44 (0)13 5923 3191225
info@melaphone.co.uk

Melaphone Speech Unit



melaphone

visual audio

When you need to talk...**Safely**
 100% blocking of viruses and pathogens
 0% transmission of air-flow



Melaphone Speech Unit

Fully certified to ISO 14644 -1 Class 5

01359 233191
info@melaphone.co.uk
melaphone.co.uk

In use for
 over 50 years



MEAD Consulting

MEAD, was founded by Kym Mead in 2014 as an independent consultancy specialising in 'low-energy' buildings, offering impartial advice to industry professionals and aspiring self-builders.

Our aim is to reduce the energy demand of domestic and non-domestic buildings, whilst also providing excellent indoor air quality and comfort levels.

Our approach is to cost effectively improve the building fabric and services whilst using the local environment to enhance the comfort levels throughout the year.

Prior to founding MEAD, Kym worked for a number of architectural practices advising on construction techniques and sustainability issues before moving to the Building Research Establishment (BRE) as 'Head of Low Carbon Buildings'. There he consulted to a wide range of clients including small and medium enterprises (SMEs), large house builders as

well as local and national governments.

During his time at BRE, Kym frequently travelled to the US, China and South Africa advising on sustainability issues and creating leads for wider business opportunities. His work included advising on the restoration of listed buildings in Johannesburg, supporting government agencies on innovative developments in Portland, Oregon and authoring the sustainability framework for a new city in Chongqing, China, as part of the 'Future Cities' programme.

Kym has also completed an internship at the Passivhaus Institute in Germany and has worked closely with Bath and Cardiff Universities as an 'Industry Supervisor' for PhD students, whilst also supporting the UK Passivhaus Trust, and Passivhaus Institute in Germany as part of their technical panel helping to shape the future of the standard.

www.meadconsulting.co.uk



Fisher & Company

Fisher & Company make a range of products for Highways, Street Lighting and Outdoor Power Supply including EV Charging Pillars and Solar Belisha Beacons. Have a look at www.fisherandcompany.co.uk to see what else we can do.



In 38 years of manufacturing we've developed a reputation for high quality and reliability. We also have earned ourselves a niche for bespoke work and because we manufacture almost everything in our own factory in Somerset we have total control over the materials and production process. All this ensures that our customers enjoy a great service as well as excellent products backed up by our Feefo reviews.

Currently in the process of obtaining ISO 9001:2015 we are always looking to improve what we do and being certified will give our customer old and new additional reassurance that they are being looked after in the best way possible.

Our lead times are some of the fastest in the industry for both individual items and large or call off orders.

If you need any more information or would like us to quote on a project or item for you just email info@fisherandcompany.co.uk or call our friendly, knowledgeable Sales Team on 0333 666 2122. We're open from 8am - 5:30pm Monday - Friday

Mead: Energy & Architectural Design Ltd.

MEAD is an independent consultancy specialising in low-energy buildings, offering impartial advice to industry professionals and self-builders.

"Our aim is to reduce the energy demand for domestic and non-domestic buildings, whilst also providing excellent indoor air quality and comfort levels".

Services include:
 Passivhaus certification | Passivhaus pre-application checks | Building design charrettes | Holistic building fabric & services evaluation | Onsite 'Toolbox talks' | CPDs & training

meadconsulting.co.uk
 +44 (0) 7852 324 246 | enquiries@meadconsulting.co.uk | @meadltd

*Traditional style...
modern purpose*

EV Charging - Regeneration - Parks - Sports & Leisure

We have a range of styles, finishes and sizes to suit all purposes and budgets. With our Bespoke build and Pre-Wired services we're your 1st choice for high quality Feeder Pillars and Electrical Enclosures. Call us or visit the website for more information.

Tel: 0333 666 2122
Email: info@fisherandcompany.co.uk
Website: www.fisherandcompany.co.uk

Frametech Essex Ltd

At Frametech Essex Ltd we pride ourselves on our knowledge on all things structural carpentry. Established in 2009 by one of our company directors, Andy Perkins, Frametech have delivered a high standard of work on countless projects across the south of England. We have worked alongside many of the UK's top timber frame and engineering specialists.

In the current climate, where the speed of on-site build is key, we have helped many construction companies in their choice of using timber engineered builds over traditional block and brick methods. At Frametech, we truly believe this is the future of construction. Not only does it increase the on-site production, but it is also a natural and sustainable material with higher insulating properties.

Would timber frame be right for your build? We have worked on many projects large and small and would always look to advise people where we can on the potential benefits of timber engineered products. Whether it be prefab timber frame panels, pozi-strut joists or trussed rafter roofs, we work closely with several engineered timber manufacturers to ensure we provide all our clients with all of their project requirements.

For more information please visit our website at www.frametech-essex.co.uk



SUPPLIER OF HOISTS TO CONSTRUCTION & INDUSTRY

HIRE SALES SERVICING PARTS REPAIRS

01724 781647 | 0113 819 9997 | 0191 260 0543
DIRECTHOIST.CO.UK

STRUCTURAL CARPENTRY SPECIALISTS

Cut & pitched roofs
 Timber frame buildings
 Engineered timber
 Trussed rafters
 Special projects
 Self build

WWW.FRAMETECH-ESSEX.CO.UK

AVANT

INTERNATIONALLY ACCLAIMED & INNOVATIVE AVANT LOADERS

- More than 200 different kind of attachments make Avant the world's most versatile, multi-functional loader.
- Avant loaders and attachments are being actively developed based on customer feedback. Customer orientation is important to us and will help us succeed in tough competition.
- All loaders are manufactured in our modern and highly automated production plant in Ylöjärvi, Finland. Quality control is accurate along the production process and all loaders are tested carefully before delivery.
- You may come across an Avant loader anywhere in the world. We export to every continent in the World and Avant loaders are used from Australian warmth to the Siberian frosts.
- Avant machines are available through nationwide dealer network that will help you to select the right model for you. From local dealers, you can also source any attachments, spare parts, and service need that you may have.

**One Machine.
Endless Possibilities.**



Contact us

Email: sales@avant.co.uk

Freephone: 0800 015 8482

Phone: 01953 714896

Visit: www.avanttecno.co.uk

A developers first steps in to Passive Haus, path finding into a helpful community...

First steps

The Passive Haus Institute had a huge influence on developing the company's vision and to show the institute the companies support is one of the Pure Haus goals. The principles to work to were very consistent with the company's ethos for sustainability, quality, health and comfort. Taking pride in your home and local community was at the heart of our long term vision; Building Stylish and Sustainable Communities.

Values Driven

After committing to the goal of reducing the carbon footprint of the built environment the affect was so substantial Pure Haus found themselves promoting

Passive Haus to anyone who would listen to them, there was a new buzz within the company. The first challenge was naming the company.... Pure Haus emerged the winner. Implying a German inspired house builder with a goal of making the world a cleaner, healthier place. The second goal was to identify the people who can help remove assumptions from the equations and replace them with facts.

Working with like minded people

Aligning with like minded people, who demonstrate this enthusiasm by going above and beyond our expectations, is the driver of this business. Our Builders have taken time to travel and see other sites under

construction to learn a new skills, to say they are excited about timber framed housing and its potential would be an understatement. Working to this standard is an opportunity that's rare; for them to be given a chance to do something worthwhile, get paid, and leave a legacy appealed to them!

Future challenges

Having secured relationships with financiers and landowners the biggest challenge moving forward is to have the operations of the company scaled up to match the ambition of the company.

www.purehaus.co.uk



Powder coated steel planters and bench units, Chiswick Park, W4

THE PLANTER SPECIALIST

IOTA offers a trusted bespoke manufacturing service in all sheet metals

- Highly skilled metalwork aided by the latest technology
- Experienced project team
- Full service provision

T. 01934 522617 W. IOTAGARDEN.COM

Public Sculpture



Art for the public to enjoy has taken many forms from the Pyramids and Sphinx in Ancient Egypt with its quasi religious and Royal elements through the classical Greeks and Romans setting the standard in the body beautiful of gods and goddesses and their triumphal depictions of heros both mythical and real.

The renaissance was really the next wave to influence pulic art and again religeon was the main source of inspiration with Michaelangelo's David and La Pieta probably the best known .

This heavily influenced the next movement which was a combination of the effects of the grand tour with many famous collections both private and public built up combined with the surge of the Georgians and Victorians commemorating the heros of the day with possibly Nelson's Column being the most famous.

It was then that nonrepresentational art emerged with The Eiffel Tower in Paris being the most obvious example followed in yet another direction by Henry Moore and Barbara Hepworth making Abctact a contoversial for some and popular for others, break from tradition.

The present day is heir to all these influences which pull in so many different directions and is spread like a feast to be picked over and chosen from with discretion and taste.

Peter de Sausmarez director of ArtParkS International and its massive Sculpture Website, says that it is fascinating to see such a variety of different works and styles that are being chosen to embellish Public spaces, Hotels and Offices where it is essential to have only the best.

Specifiers, Interior Designers, Planners seem to find nearly 500 categories of thousands of sculptures from all over the world an easy and ready source for inspiration, selection and commissioning Art for today.

www.artparks.com

Pedestal Support Systems for Paving and Decking

ZinCo Green Roof Systems Ltd.
office@zinco-greenroof.co.uk · T: 01993 229700
www.zinco-greenroof.co.uk

Life on Roofs

Intelligent water monitoring

Intelligent water monitoring checks a range of parameters in order to get a real-time view of system integrity, water characteristics and corrosion. Suitable for use on closed-circuit systems of any size, this type of technology prevents corrosion and system breakdown by flagging up small changes in condition that would lead to more serious (and expensive) issues if left unchecked.

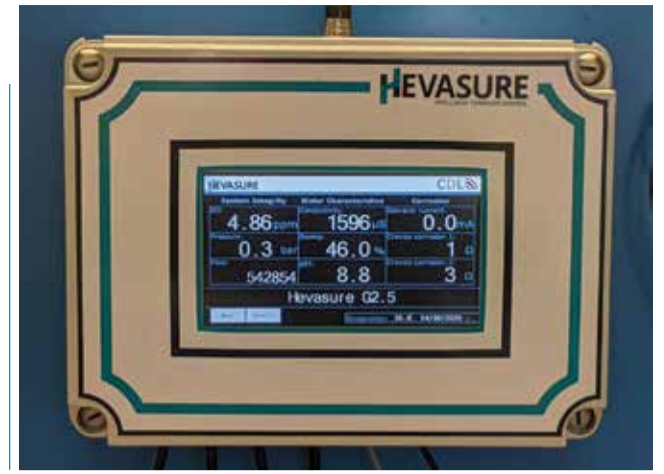
Common applications include commercial premises, in both the public and private sector, district heating systems, data centres and hospitals. Hevasure's 24/7 real-time solution can be used to monitor conditions at all stages of a water system's life, from pre-commissioning cleaning through to handover and on-going maintenance.

Importantly, our state-of-the-art sensors check for Dissolved Oxygen

(DO), something that is not picked up by sampling – the traditional way of checking water condition. DO is the pre-cursor to nearly all types of corrosion, directly resulting in pipe and component degradation and/or providing the right conditions for bacteria to thrive, which can lead to Microbial Induced Corrosion (MIC).

Detecting oxygen's presence, along with the parameters that cause it to enter systems, such as pressure or make-up water flows, is critical. Measuring other contributory factors - pH, inhibitor levels and temperature - provides a full picture, that will lead to more efficient closed-circuit systems, less likely to corrode and fall-foul of expensive repairs.

www.hevasure.com



Rubberseal



With over 18 years' experience, Rubberseal have become one of the country's leading specialists in non-flame application, flat roofing and waterproofing systems.

We pride ourselves largely on our innovative approach towards encouraging sustainable practices in the industry and our commitment to supplying quality roofing materials.

Rubberseal are the main UK importer and distributor of Firestone EPDM, lightweight metal roofing and liquid roofing systems. Our very own Liquiflex-Pro roofing system is the latest addition to our product range, excelling in the long term, watertight protection of various projects across the roofing, rail and construction industry. Our green roof system has been hailed upon as revolutionary thanks to its clever, modular tray design, saving time on installation while contributing to a greener planet.

Rubberseal are continuously adapting and growing into changing times. In fact, amidst the COVID 19 global pandemic, Rubberseal have continued to soar, acclimatising to new restrictions while achieving a record breaking 5 months! From superior products to inventive tools, our industry expertise has enabled us to forward think, bringing a unique liquid applicator to the UK and a completely self-adhesive felt system (designed in house) to the year 2020.

As a Company, we offer unmatched proficiency and customer service. Our dedicated team made up of Area Managers, Laboratory Technicians and Technical Representatives are armed with an abundance of industry knowledge and infrastructure, ready to support our wonderful clients.

Communication is very much at the heart of what we do, including our social media presence. We take pride in establishing and fostering effective working relationships through both traditional and modern means.

www.rubberseal.com



Designed to fit.



There's no 'one-size-fits-all' at Tubosider.

Whatever your project needs, our single store stormwater tank systems are designed to suit your discharge rate, return period, site dimensions and project budget.

Call us today to find out how
01744 452 900
tubosider.co.uk/singlestore



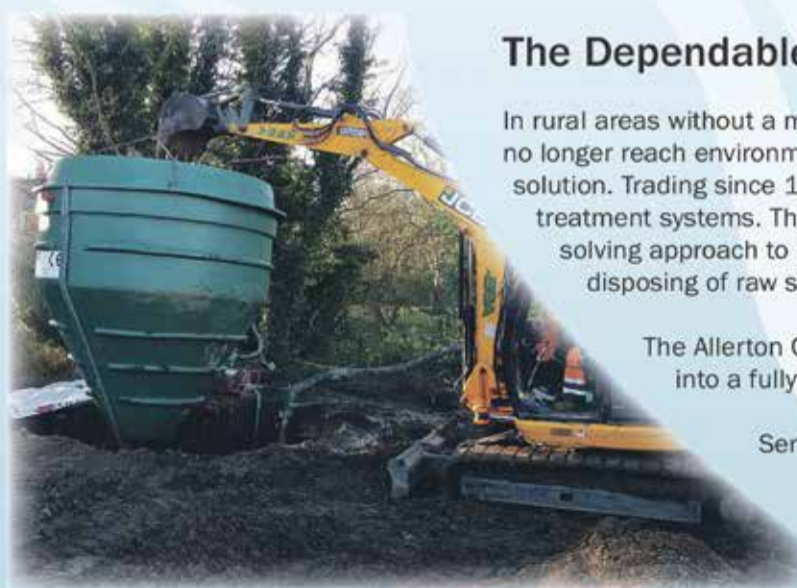
Freephone: **0800 328 5492**
Email: sales@allertonuk.com
Website: www.allertonuk.com

The Dependable Choice in Drainage

In rural areas without a mains drainage system, and where septic tanks will no longer reach environmental standards, Allerton can provide the ideal solution. Trading since 1974, Allerton are leading specialists in efficient treatment systems. They pride themselves on their individual, problem solving approach to dealing with alternative means of treating and disposing of raw sewage.

The Allerton ConSept converts your existing Septic Tank or Cesspit into a fully functioning Sewage Treatment Plant.

Servicing & Maintenance on a wide range of Sewage Treatment Plant and Pump Stations by BRITISH WATER ACCREDITED ENGINEERS.



The Diamond Sewage Treatment range is suitable for either individual homes or small population applications

When Gravity Drainage is not possible choose Allerton Pumping Stations for Sewage or Dirty Water



Hauraton channels drain Blue Badge scheme parking bays at RHS Wisley



On 10th June 2019, Alan Titchmarsh, MBE, opened the first phase of The Welcome Building and surrounding landscape at Royal Horticultural Society gardens, Wisley, Surrey. The new facility has transformed the experience for visitors to the gardens with new buildings including a spacious arrivals hall, café, shop, plant centre and a 100 seat restaurant. There are now three large car/coach parks including Blue Badge scheme easy access bays for visitors in park two.

One hundred metres of Hauraton RECYFIX® PRO 100 channel system, fitted with FIBRETEC® C250, 9mm HEELSAFE slot gratings, was used by groundwork sub-contractor GPB Construction Ltd to drain the asphalted Blue Badge parking bays for visitors. The channels were installed between the bays and the path leading to the entrance of the new arrivals hall.

Since its launched in February 2010, the RECYFIX® PRO 100 surface water drainage channel, featuring the innovative FIBRETEC® grating, has been specified and successfully

installed in numerous United Kingdom drainage projects, including rail station platforms, public squares, shopping malls, sports-fields, tartan running tracks and many other commercial and private applications.

The material, PA-GF used to make the FIBRETEC® grating, was especially developed by Hauraton; the tough, UV resistant, fibre reinforced moulding offers high stability and huge strength for its weight. Complying with loading category Class C250 (BSEN 1433) the grating can easily take the weight of cars and commercial delivery vehicles. The design is a



real innovation as its non-corrosive material provides a visually appealing surface finish that retains its black colour.

The FIBRETEC® C250 HEELSAFE slot grating was specifically designed by Hauraton R & D engineers to enhance the flow of water into the channel. The slots are super smooth, elliptical openings with the moulded bars having slightly raised triangular bosses along their outside edges. As well as providing an elegant appearance, the feature ensures surface water

is directed into the slots. This configuration also helps eliminate any cross-flow over the grating.

The RECYFIX® PRO 100 channel component is made from 100% recycled polypropylene (PP). The six sizes offered are 160mm wide and range in height from 75mm to 250mm with the FIBRETEC® grating factory fitted on all models. As the largest unit is only 5.8kg, the channelling is easily handled and quickly installed on site.

www.drainage-projects.co.uk

New hydraulic DesignSoftware for HAURATON surface drainage systems

HAURATON's new web-based application 'DesignSoftware' provides construction industry professionals with quick, simple hydraulic analysis, channel sizing, project design and product specification for the company's range of surface drainage systems (for landscape, commercial and civils projects) whilst working on their own desk-top computers, laptops and tablets.

Immediate access for registration and use of this new hydraulic design software is achieved through the link: <https://hydraulicdesign.hauraton.com>

User-friendly and free-of-charge, HAURATON 'DesignSoftware' provides engineers with the flexibility to create their own drainage designs and project specifications, with just three clicks to a hydraulic calculation.

HAURATON has used their 'in-house' hydraulic design software to create project designs for over 30 years with



total reliability.

In addition to this new software application, HAURATON offers a comprehensive design service, which is also free of charge.

Further information is available at: www.hauraton.co.uk or by phoning 01582 501380. Software: <https://hydraulicdesign.hauraton.com>

HAURATON DesignSoftware – Features & Functions

- ▲ User-friendly, intuitive interface with quick, clear, simple steps to final calculations.
- ▲ Hydraulic calculations based on widely used 'Modified-Manning-Strickler' formula. Hydraulic discharge provided on a free outflow basis.
- ▲ Accommodates HAURATON's core range of linear drainage systems for total design flexibility (for landscape, commercial, civils and other project types). Includes all channel types and depths available.

- ▲ Rainfall intensity options in mm/h, l/s*Ha and l/s*m².
- ▲ UK Software: UK Rainfall Map using data from 'Flood Studies Report'. User options for Return Period, Storm Duration and Climate Change.
- ▲ Automatic and manual channel run design functions.
- ▲ Constant-depth and step-fall channel configuration options.
- ▲ Accommodates both 0% and positive longitudinal ground slopes.
- ▲ Detailed hydraulic analysis of channel run designs.
- ▲ Controlled discharge function for HICAP® Slot Channel designs.
- ▲ Quick user tools for adding/duplicating runs, resetting designs, adding notes etc.
- ▲ 'Drag & Drop' function for adding Point Inflows to the channel run design. Tributary channels can be linked to the main channel run being designed.
- ▲ 'Drag & Drop' function for adding system Accessories to the channel run design.
- ▲ Comprehensive product library for 'one-stop' specification data. HAURATON website links for

additional product information.

- ▲ HELP file and tool-tips for detailed design guidance and advice.
- ▲ Project folder for registered users offering safe and secure server storage of final designs. Option to export design files for external storage.
- ▲ Automatic generation of .pdf project documents for specification support. Hydraulic Analysis, Materials List and Information datasheets available.

Design Reassurance

DesignSoftware has been tested extensively and the methodology validated by an independent hydraulics consultancy company. HAURATON's 'in-house' hydraulic design software has been used successfully by their own technical personnel for over 30 years with total reliability.

Confidential

Registered users (password protected) have access to safe and secure server storage regarding their final designs. Designs remain strictly confidential unless users tick to 'share with HAURATON'. Registered users have the option to export design files for external storage in their own computers or for sharing with colleagues for further design or discussion. DesignSoftware has been configured to comply fully with GDPR 'data privacy' regulations.

Experience & Expertise

A world leader in the manufacture of modular surface drainage systems, HAURATON drainage products have been supplied onto major projects within the UK and international markets for over sixty-five years. HAURATON developed their first linear drainage system in 1956. Since that time the HAURATON brand has become known around the world as a benchmark for quality, reliability, durability and service.

New distributorship for Cinderella Eco Solution

LeeSan has become the Sole distributor for Cinderella Eco Solution incinerating toilets. 4 different toilets will be available very soon running on Propane Gas or 240V.

Cinderella Motion represents an entirely new concept for waste handling in Off-the-Grid locations, Marine craft, mobile homes and recreational vehicles. It is now possible to get rid of toilet waste in a hygienic and simple manner. The end product is just clean ash. The toilet may be used around 70 times before emptying is required. Cinderella Motion

is a further development of the popular Cinderella incineration toilet currently installed by over 60,000 users worldwide.

An incineration toilet is a toilet in which waste products, urine and excrement, are incinerated at a high temperature, leaving only an insignificant amount of ash.

Available around the world for decades, incineration toilets are a commonly used alternative in mountain cabins, remote areas, tiny homes, off-grid structures

and other residential and commercial applications without easy access to public utilities. Since incineration toilets do not require the installation of a water supply or costly septic systems, and do not demand ongoing and messy work to process waste, their slightly higher unit price is heavily offset by lower maintenance over time, providing a substantially lower total cost of ownership than other solutions, both in terms of money and headache.

T +44 (0)1295 770000
www.leesan.com



Leading services in the water industry

HD Services Ltd was first established in 1984 by current company Director, Frank Harris. Based in Buckinghamshire, the company operate throughout the South East and specialise in the design, supply, installation and maintenance of



sewage treatment systems, open-loop ground source heat pump systems, water supply boreholes, soakaways and drainage – all the utilities a self-builder may require.

Customer service is at the forefront of the company which is why they provide on-hand advice and support on dealing with the Environment Agency, applying for the domestic Renewable Heat Incentive, and in regards to the several different services they provide. HD Services have been recognised for their exceptional products and services, receiving regional awards at the South East Green Deal and ECO Awards 2015, the Energy Efficiency and Retrofit Awards in 2016, the Energy Efficiency and Health Homes Awards 2017 and the Energy Efficiency Awards 2018.

Having won awards for their renewable heat installations, we asked Rebecca Taylor, Business Development Manager, what the benefits were. "We strongly believe that the open-loop ground source heat pump systems we design and install are not only the most efficient way to heat your home in our operational area, but also do less damage to the aquifers than drilling for closed-loop borehole systems, as predominantly these use the rotary drilling method. We aim to provide the highest quality open-loop ground source heat pump service available in South East England."

T +44 (0)1494 792000
enquiries@thehdgroup.co.uk
www.hdservicesltd.co.uk



COVID-19
SAFE
WORKING

With over 30 years experience, we offer bespoke solutions for the domestic market across the South East.
Feasibility can usually be determined upon receipt of a site postcode.

WATER SUPPLY & SOAKAWAY BOREHOLES; DRAINAGE SOLUTIONS & WATER TREATMENT

We could provide an independent water supply via a water supply borehole which could be used for irrigation, grey water or consumption*.

We construct soakaway boreholes, drainage fields & other drainage solutions.

We offer water treatment solutions including softeners, filters and UV.

*subject to analysis and suitable treatment.

EAST OF ENGLAND

ENERGY EFFICIENCY AWARDS 2019

HIGHLY COMMENDED

RENEWABLE HEAT INSTALLER & CONTRACTOR

GREATER LONDON

ENERGY EFFICIENCY AWARDS 2019

HIGHLY COMMENDED

RENEWABLE HEAT INSTALLER & CONTRACTOR

RENEWABLE HEATING

Reduce heating bills by up to 50%.

Groundwater can be used as a heat source for an Open-Loop Ground Source Heat Pump which could meet all hot water and heating requirements, reduce the carbon footprint of your home and save you money.

The system could also be eligible for the governments Renewable Heat Incentive (RHI).

SEWAGE TREATMENT SYSTEMS

If you know you require a system but don't know where to start then contact us for an informal chat. Our extensive experience allows us to signpost you to the best option, whether that be our bespoke design service, or an off the shelf alternative.

Our bespoke systems are designed to meet the needs of individual clients and comply with strict discharge legislation.

Servicing contracts are offered for all our installations.

enquiries@thehdgroup.co.uk | 01494 792000 | www.hdservicesltd.co.uk

A&H Duct Cleaning Services

Extraction Cleaning

A&H Duct Cleaning have been established since 2015 Becoming a market leader in Extraction Cleaning throughout the Southwest and beyond. Ensuring your Extraction is cleaned and compliant with Current TR19 CITB Standards.

A Photographic Survey Report & Certificate of Extraction Cleaning Compliance essential for Valid Insurance purposes issued by our certified TR19, CITB 14208 technicians. All works are undertaken in line with Building

and Engineering Service Association (BESA) guidelines and certified by NAAD UK.

LEV Testing

Are you aware that your company has a legal responsibility to protect, not only its employees, but the environment as well?

We offer Performance Testing and Inspection of LEV (local exhaust ventilation) Dust and Fume Extraction Systems in line with regulation 9 of the Control of Substances Hazardous to Health Regulations 2002 (COSHH).

Our P601 Trained Testing Engineers will give you peace of mind that your LEV conforms with COSHH Regulation 9 as detailed in HSE Guide HSG258. Whether you are interested in LEV Testing or Extraction Cleaning Services, we cover the whole of the UK with Regular Cleaning and Testing Packages Available. Many other services are also available.

Contact
T 01208 75787
ahductcleaningservices@btinternet.com
www.ductcleaningcornwall.co.uk



For A Free Quotation Call Or Email
Email : ahductcleaningservices@btinternet.com
com
Web: www.ductcleaningcornwall.co.uk
Office : 0120875787
AnnMarie : 07943517028



We offer a 24-Hour Comprehensive Services which can fit around your requirements, ensuring minimal disruption to you and your Business Our Local Exhaust Ventilation (LEV) Testing and Maintenance Services ensure that your Dust and Fume Extraction Systems are working correctly and protecting your Staff from Hazardous substances.

- * Local Exhaust Ventilation Cleaning.
- * Grease Extraction Cleaning to TR19 Standards.
- * Ventilation Ductwork Cleaning Laundry Ventilation.
- * Pre-Filter, Carbon & Bag Filter Replacements.
- * Fresh Air Supply & AHU (Air Handling Units) Cleaning.
- * Commercial Deep Cleaning.
- * Kitchen Equipment Cleaning.
- * Steam Pressure Washing.
- * Decarboniser Hire Service.
- * Chemical Fogging of all Fresh Air Supply Systems.



Transforming Concrete into a High Lustre Finish

one stop shop



The Cottage - Guy Holloway Architects

Polishing old or new concrete presents a sustainable, durable & modern flooring option.

We are the experts. Call us for project advice.

+44 (0) 1522 561460



www.thepreparationgroup.com

DPPS Contracts



DPPS Contracts are an international construction company with a wealth of experience in many aspects of the construction industry. Having undertaken large contracts in Formworks, Groundworks, Paving and General Construction in recent years across Ireland, the United Kingdom and Mainland Europe, we have built up a diverse and impressive portfolio.

Our four core divisions, Concrete Works, Precast Installation, Groundworks and Labour Hire, consist of foremen with over 10 years' experience, high quality carpenters, experienced finishers, and many other driven, hardworking operators. We also boast a dedicated engineering design team to supply temporary works drawings and calculations if required on a project.

We attribute our success to our comprehensive company ethos of Safety, Quality, Results. This has led to us having a great record for completing projects on time, with most projects completed early and to budget. Given the tight nature of programmes, we feel that we can offer a valuable service to main contractors. Safety is always at the forefront of every project and our high-calibre end results speak for themselves.

DPPS UK has completed projects in the Shetland Islands, London, Manchester, Cornwall, Glasgow, Edinburgh, and Belfast but to name a few, ranging in values from £20,000 to £5,000,000. We generally average a strong workforce of around 100 operators in the UK with an ever-growing capacity to take on all sizes of projects.

DPPS Ireland coordinate projects throughout Ireland and more recently, Holland, with other prospective European works in the pipeline. These projects range in value from €10,000 to €5,000,000 and because of our success, DPPS Ireland normally carry a crew of 80+ talented and dedicated operators.

Further Information and a full outline of our projects can be found on our website at www.dppscontracts.com.

DPPS Contracts
International Construction
 SAFETY • QUALITY • RESULTS

DPPS UK: Tel: +44 (0) 203 026 4154 /
Mob: +44 (0) 748 744 7987
DPPS Ireland/Europe: Tel: +353 (0) 74 911 9533
Email: info@dppscontracts.com
Website: www.dppscontracts.com

DPPS Contracts are an international construction company with a wealth of experience in Formworks, Groundworks, Paving and General Construction with countless projects already completed in Ireland, the United Kingdom and Mainland Europe.



Concrete Works • Precast Installation • Groundworks • Labour Hire

Carl finds waste not, want not, with Graf UK

Demand to join Graf UK's nationwide network of approved installers is growing exponentially, even during lockdown. Here, one contractor explains what the benefits to him have been of linking up with the specialist manufacturer.

Becoming an ambassador for Graf UK wastewater treatment systems has not only made life easier for Carl Pickess but also more profitable.

Just two months after starting up his own company, Kent Waste Water Services, the fledgling business has turned a profit 50% higher than Carl was expecting ... and all this during the UK's Covid-19 lockdown. In that time, Carl has installed two

Graf UK systems and sold six more wastewater treatment systems that await installation.

So successful is the partnership with Graf UK proving that Carl is now planning on training up his younger brother to do more of the installation side, leaving Carl to concentrate on the servicing, maintenance and site visit aspects in Graf UK's recently-introduced Lifetime Support scheme.

The partnership was formed after Graf UK contacted local installers prior to the Build It Live exhibition in Maidstone, where Carl's business is based. Carl has since attended Graf UK seminars and service provider training.

"I jumped at the opportunity. It was what I had been looking for to get the business up and running but I never expected to sell eight tanks in the first few months," he said. "My first option will always be Graf because they are the best systems on the market."

"Lifetime Support is probably the No 1 selling point. Everyone is so interested in it. It's a huge benefit for customers."

For businesses who would like to learn more about working with Graf UK, please contact national sales manager Steve Righton on 07702 872348 or srighton@grafuk.co.uk or info@grafuk.co.uk.



Tuff Waterproofing: Leaders in Flat Roofing



When it comes to roofing, Tuff Waterproofing can provide industry-leading heavy-duty GRP waterproof flat roofing systems known as TuffStuff®.

TuffStuff® GRP refers to glass reinforced polyester, more popularly known as Fibreglass. Based in North Yorkshire, Tuff Waterproofing specialises in providing flat roof waterproofing solutions.

The experts at Tuff Waterproofing have been continuously evolving roofing solutions for over 30 years, they have grown to become the leading supplier of GRP roofing materials, equipment and related services.

They work primarily with Builders Merchants, operating across the whole of the UK to supply their resins, catalysts, roof trims, reinforcing mat, and application tools. One of their most renowned products includes the Tuff Tech Pro®.

Newly launched, the Tuff Tech Pro System VP/UV flat roof Polyurethane Liquid Waterproofing System is specially designed with an elastomeric, moisture triggered polyurethane membrane that is comprised of three layers of advanced polyurethanes.

We spoke to Managing Director of Tuff Waterproofing, Greg Gimenez, who explained, "Polyurethane is beneficial for a number of reasons, including being cost-effective and ease of use. For this reason it is highly popular within the commercial market. With the Tuff Tech Pro's waterproof encapsulating membrane, the flat roofing system can be applied to a number of different substrates including felt, asphalt, fibre cement, metal, polycarbonate, PVC, tissue faced insulation boards and much more."

In addition to products, Tuff Waterproofing also provides training and technical support for contractors. Their training service is highly popular, with all members of staff at Tuff Waterproofing each boasting over 15 or 20 years' installation experience. If a client faces an issue, Tuff Waterproofing can either go on-site or explain in detail over the phone (or other technologies) how to overcome the problem using their technical expertise.

If you would like to find out more about Tuff Waterproofing's wide range of roof related products, be sure to get in contact using the number below or check out the website.

Contact
T +44 (0)1977 680250
www.tuffstuff.co.uk



Wastewater Treatment & Rainwater Harvesting Specialists

- High quality systems to suit all applications
- Strong & robust underground tank
- Gravel base & backfill
- 10 year warranty on underground tank
- Low power consumption
- Discreet & unobtrusive finish

Are you aware of the changing septic tank regulations? Ask us for more information



 Rainwater Harvesting
  Stormwater Management
  Wastewater Treatment
  Garden

www.grafuk.co.uk

TuffTech^{PRO}

Tuff Waterproofing launches new Polyurethane flat roofing system for commercial market

Tuff Tech Pro VP/UV is a durable, completely seamless waterproof encapsulating membrane which is ideal for new or existing flat roofs, walkways, balconies and gutters. Its advanced fast-curing formulation is quick and easy to apply, significantly reducing time and labour on site. Available with installation training on request, the product is non-hazardous and can be applied in damp atmosphere.

A Tuff Tech Pro VP/UV is a high-build, elastomeric, moisture-triggered polyurethane membrane comprising three layers of advanced polyurethanes incorporating a separate technically advanced reinforcement layer. It can be recoated at any time prior to the end of its maintenance life, thus extending its working life indefinitely. Training is available at your local stockist upon request.



TuffTech^{PRO}
15kg - MEMBRANE

Please visit www.tuffstuff.co.uk

T 01977 680250 • orders@tuffwaterproofing.co.uk



Braving the Storms

With Winter fast approaching the weather has undoubtedly already taken a turn for the worse. After basking in days of sunshine we are now heading for wet and rainy days as the British weather sets in, and issues will, no doubt, start to arise with poorly maintained roofs.

Weather conditions can be harsh on exterior structures, and changes from hot to cold temperatures make their mark on coatings and coverings exposed to the climates and UV radiation throughout the year. Cracking, peeling, blistering, thermal stress, surface erosion of protective roofing

membranes are all common problems related to weathering which ultimately results in installation failures and subsequent expensive leaks and structural damages to repair or put right.

At Bond It, we have tried to make choosing the right product a simple process. We offer a wide range of roofing products to cover all aspects of roofing from combating leaks to improving efficiency. Under our Bitubond brand we have put together everything you need as a Professional Roofer for new build and maintenance projects which provide immediate and safe waterproofing solutions.

Products that have been designed and manufactured for the job in hand.

Available in an array of sizes the Roofing portfolio encompasses waterproofing compounds, high performance solar reflective solutions, all weather roof compounds, primers, felt adhesive, self-adhesive flashing tapes, DPC, chipping solution, and tanking membranes.

All high quality, UK manufactured products with tried and tested formulations that have been used in the



industry for nearly 2 decades. All ready to use from the tins and requiring no heavy heating equipment to apply, the range is simple but effective.

For more information contact our Sales Team on 01422 315300.



Tel: 01630 657281
www.precolor tankdivision.co.uk





Delivering the UK's finest quality GRP water & chemical storage tanks with exceptional service & unbeatable value.

If you specify or purchase storage tanks, now more than ever, you need to be sure that your supplier is well established, competent, has approved products and are able to work with you to add value to your products and services. Precolor meets all those requirements and occupies a unique place in the

market, we actually manufacture every single tank that we supply. We have been manufacturing storage tanks for nearly 50 years and take great pride in ensuring that all our customers experience exceptional service and our tanks are made to the highest quality.

PROUD TO BE A BRITISH MANUFACTURER



Stairkraft: Taking your Home to the Next Level

Transform your home with a luxurious and elegant floating stair

Stairkraft are pleased to announce the launch of their innovative Faux Cantilever Stair. Make your stairs a unique and individual feature, enhancing your home and adding value to your property.

They have developed an ingenious and inspired system of support, which eliminates the requirement for either, a substantially built support wall, or incorporation of any additional steel support frame; normally a prerequisite of a cantilever stair.

Furthermore, for prospective clients refurbishing and replacing an existing stair, the faux cantilever can be installed without the mess and disruption caused by the removal of the existing plaster finishes, making for a more timely and hassle-free installation experience.

Together with the obvious time benefit, the Faux Cantilever stair can be manufactured and installed for a significantly lower price than that of a conventional cantilever stair.

Stairkraft offer a complete service, from design to installation. All stairs start by being created in Stairkraft's own Design studio, utilizing the latest 3D CAD systems. They are manufactured in their own purpose-built factory in Sheffield, employing the latest technology and engineering whilst still embracing traditional craftsmanship. They are then installed by Stairkraft's skilled operatives.

The stairs are available in a range of materials, styles and finishes, including glass treads.

Please contact info@stairkraft.co.uk for your free, no obligation quotation.



premier[®]
guarantee

WE ARE TECHNICAL EXPERTS

Providing guidance
and assuring quality

STRUCTURAL WARRANTIES AND
BUILDING CONTROL FOR NEW HOMES

PREMIERGUARANTEE.COM
0800 107 8446

MD Insurance Services Ltd is the Scheme Administrator for the Premier Guarantee range of structural warranties.
MD Insurance Services Ltd is authorised and regulated by the Financial Conduct Authority.

premier
guarantee®

REST EASY
WE'VE GOT
YOU COVERED



**STRUCTURAL WARRANTIES AND
BUILDING CONTROL FOR NEW HOMES**

PREMIERGUARANTEE.CO.UK
0800 107 8446

MD Insurance Services Ltd is the Scheme Administrator for the Premier Guarantee range of structural warranties.
MD Insurance Services Ltd is authorised and regulated by the Financial Conduct Authority.

COVID-19 has affected us all

Your workspace needs to be more organised than ever to ensure you can not only run to maximum efficiency but also keep your team safe.

We're experts in space utilisation and our business services team can help support you.

Get in touch with our team today to book your FREE consultation.



**FREE
SITE VISITS**



**FAST
QUOTATIONS**



**3D
DRAWINGS**



**NEXT DAY
DELIVERY**



**INSTALLATION
SERVICES**



**NATIONWIDE
COVERAGE**



BiGDUG®

WWW.BIGDUG.CO.UK 0800 141 3380