

Building & Construction Review



Luxurious Kitchen Worktops

Sheridan UK is the UK's largest supplier of granite worktops and provides a wide range of worktops for blue chip and independent retailers. First established in 1995 by Managing Director, John Blackburn, Sheridan displays a wealth of dominating industry experience and excels in providing premium products.

"We specialise in fabrication and manufacturing of luxury worktop surfaces and provide both bespoke and off-the-shelf solutions." Alex Tinkler, Digital & Marketing.

Sheridan is a market leader in the industry and invests in the latest technology, ensuring premium quality and excelling in customer service. "We are the biggest in the UK, this allows us to be confident in our services and bring in new innovations to the market." Alex continued, "We also have the fastest lead-times on the market."

Through Sheridan's range of worktops, the company provides a varied selection of high quality worktops, manufactured and fabricated in-house by a team of expertly skilled manufacturers. Sheridan worktops are available in a wide range of materials including:

- ▲ Sintered & Ceramic Stones: - Apollo Ceramicá, Dekton (by Cosentino), Neolith
- ▲ Quartz worktops:- Apollo Quartz, Silestone (by Cosentino), Caesarstone
- ▲ Solid Surface:- Corian, Avonite, Hi-Macs; which are also available in thermoform Apollo Magna, Apollo Slab Tech
- ▲ Compact laminate:- Apollo Compact
- ▲ Wood:- Apollo Wood
- ▲ Granite:- Apollo Granite, Premium Granite, Sensa (By Cosentino)
- ▲ Apollo Recycled Glass

A recent development for the company, Sheridan launched its range of Apollo Recycled Glass worktops. An environmentally friendly product, Apollo Recycled Glass has been designed to create an aesthetically pleasing unique luxury worktop, made out of recycled glass.

Through extensive research and development, Sheridan created the range after formulating its own methodology of combining the strength of Quartz with the mesmerizing allure of crystal. Producing a crystallised stunning appearance, the worktop provides a glistening, texturized appearance and has been received very well by the market. Notably, after an extremely popular year in 2019, Sheridan is expanding its Apollo Recycled Glass range and is launching a further four new styles in March 2020.

In terms of the company's future plans, Alex told us that, "We want to expand our commercial presence and continued to assure the industry that we are a reliable supplier of high quality worktops."

For any further information please see the details below.
T 0845 618 9948
www.sheridan-uk.com



New Blue Roof CPD Article from Optigreen

Green roofs are already known for their ability to attenuate water, but this can now be enhanced with blue roof technology. Here the roof not only stores water but is also able to delay water discharge after a high intensity rainfall event and release it at a pre-determined rate.



at how this can be achieved practically and why this type of specification is likely to become more commonplace in the future.

Optigreen's newly approved RIBA article 'Blue Roofs: what are they and how are they used' looks

T 0203 5899 400
Marketing@optigreen.co.uk
www.optigreen.co.uk



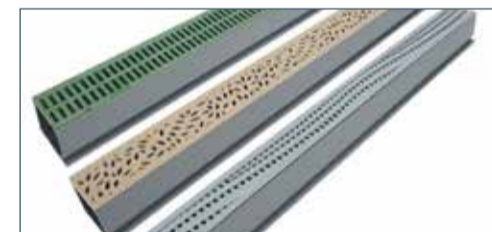
DCON Safety Consultants
See on page

IV



Hawwoods
See on page

VI



DEKS
See on page

VIII

KELLY TANKS
CONCRETE WASHOUT & WATER TREATMENT SOLUTIONS

Concrete Washouts Simple solutions for washing off concrete wagon chutes and equipment

Water Treatment Ideal onsite equipment, Lamella clarifiers, Sediment Removal, Flocculation & pH Control systems

For further info go to www.kellytanks.co.uk or call 01889 508944

HARDWARE WAREHOUSE

UK based online retailer supplying:

- Metal & Plastic Profiles
- Rebar & Threaded Rod
- Sheet Metals
- Adhesive Panels

Next Day Delivery | Best Prices | 1st Class Service

Use code **PROFILES10** to receive **10% off your order!**

Call 0330 333 5030
Email info@hardware-warehouse.co.uk
Visit www.hardware-warehouse.co.uk and place your order today!



The Bulmer Brick & Tile Company
See on page

IX



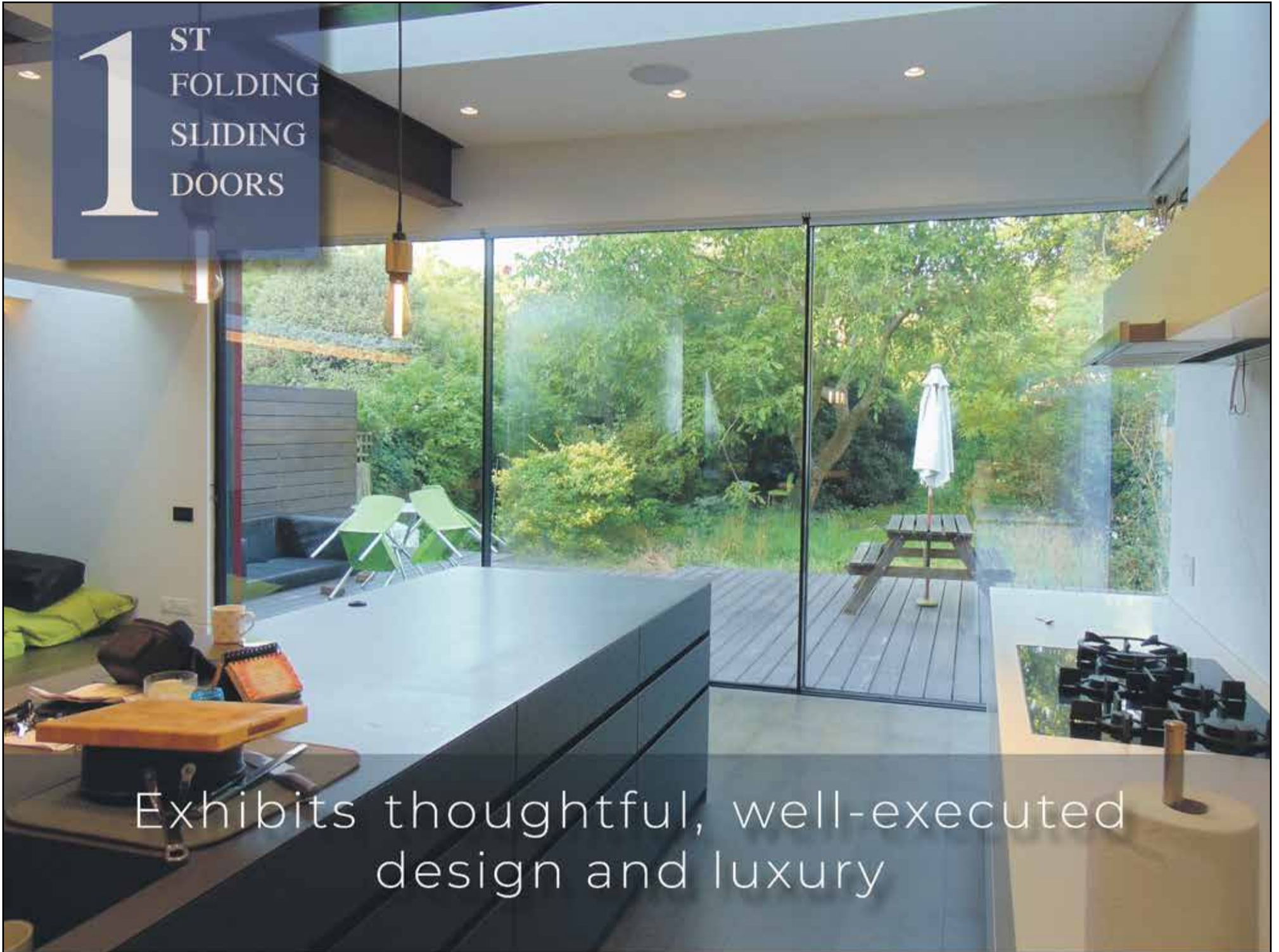
Harlequin Floors
See on page

XI



Hauraton
See on page

XVI



1ST FOLDING SLIDING DOORS

· 26 Wadsworth Road, Perivale, UB6 7JZ | 141 Hook Road, KT6 5AR ·
marcus@1stfoldingslidingdoors.co.uk · T: 0208 997 2448 | F: 0208 997 0611



Light, space, style: your home renovation expert



Building and Construction Review is proud to recommend 1st Folding Sliding Doors for its dedication to pushing the boundaries of architectural glazing.

Established in 2004 and based in west London, the company offers bespoke glazing solutions, including sliding doors, bi-folding doors, glass roof structures, windows, and frameless glass balustrades. These are perfect for both residential and commercial applications, helping to transform an environment and enhance the relationship between the inside and the outside of a building. Indeed, 1st Folding Sliding Doors offers unparalleled advice to ensure that the correct products are chosen to maximise the bespoke design its customers are hoping to achieve.

Manufacturing and designing innovative glazing



systems, 1st Folding Sliding Doors works closely with established manufacturers, offering both UK and offshore designed systems with lead times as short as one week. The company boasts over 15 years' experience in overcoming the technical difficulties involved in the design, manufacture and installation of bespoke products, and is dedicated to working through any technical issues a builder, architect or project manager may have.

This expert technical support is in addition to the company's team of fully trained in-house installers and expert support services for its trade customers, which combine to ensure that 1st Folding Sliding Doors offers the best overall package available in the market today.

"I think one of our key advantages is that we always try and think outside of the box," explained Darren Johnson, Web & Social Media Manager. "We often do things that others might not; because we're a smaller company, we have the flexibility and freedom to do this. Our manufacturing processes can be highly versatile, producing made-to-order products, and we work very closely with our customers. We offer a free site visit to ensure that everyone is on the same page and part of the conversation; this guarantees that we will create the right solution for every customer."

Indeed, 1st Folding Sliding Doors is an excellent choice for architects and property developers looking to add a unique and sophisticated touch to home renovation projects. "We want people to ask questions and enquire about what we do; we love a challenge, and want to help our customers achieve their vision."

The sheer quality of 1st Folding Sliding Doors' products and services is proven in its membership



of the Glass & Glazing Federation (GGF), FENSER and it is using their 10-year insurance backed guarantee to better serve its customers and their project teams. As a subsidiary of GGF, GGFI is a leading provider of Insurance Backed Guarantees on behalf of the home improvements industry, and it has built a stellar reputation over the last 15 years. Without a doubt, GGFI offers homeowners guaranteed protection and peace of mind in their investment, so they can focus on creating their architectural vision.

What's more, 1st Folding Sliding Doors is part of the FENSA scheme, which allows companies that install replacement windows and doors to self-certify compliance under government building regulations, without the need for a separate assessment from Building Control. This is yet another reason why working with 1st Folding Sliding Doors will ensure an efficient and pain-free experience throughout the life of a project.

"Some recent products have been our brand new pivot door for external usage," said Darren. "Not many companies are offering external pivot doors as they can cause difficulties with keeping water out, however ours are weatherproof. We've also released a range of crittall-style doors made from



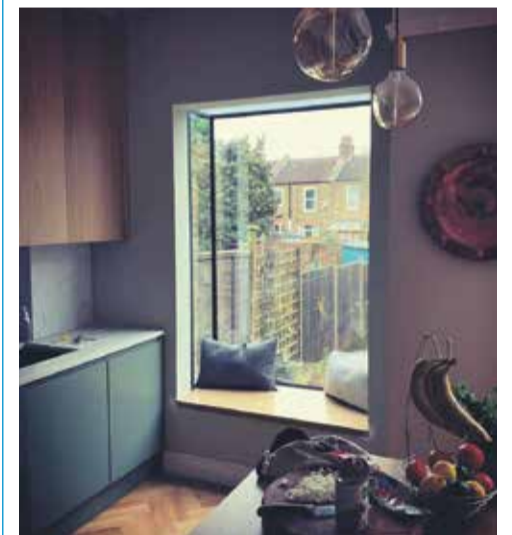
aluminium, rather than steel, but with the same heritage look. Our design department is currently working a number of new and exciting products, including a piston operated manual skylight, which avoids the need for electrical operation," Darren said.

1st Folding Sliding Doors attends a number of trade shows each year, attracting increasing levels of interest every time. The company regularly attends the Grand Designs Live show in Birmingham, and the Ideal Home show at Olympia, London.

If you would like to find out more information on 1st Folding Sliding Doors' full range of products and expert services, head to the website. Here, you can also see some stunning images of the company's past and current projects, to help inspire your next architectural project.

Alternatively, don't hesitate to get in touch using the contact details below to discuss your needs.

Contact
T 0208 997 2448
www.1stfoldingslidingdoors.co.uk



Leaders in Built Environmental Safety and Health and Wellbeing Consultancy

DCON Safety Consultants was first established in September 2016 and is a leading independently-owned Built Environmental Safety, Health & Wellbeing Consultancy based in Dublin city centre.

The company prioritises and specialises in the highest levels of informed and intelligent advice, senior project resource allocations and compliance assurance. The company benefits from a strong understanding of the potential risks attached with the planning of centring on the coordination of these two zones. With a team of highly experienced construction professionals, DCON Safety Consultants is fully committed to its clients and their projects enabling them to assist with the implementation of a design and construction management plan that meets or exceeds its client's expectations.



"We're a one-stop shop safety consultancy; we have a team of highly-experienced construction professionals who consistently ensure your best interest and statutory conformity. DCON Safety is committed to understanding the specific needs, goals and desires of each individual client and project." says Diarmuid Condon, who owns and runs DCON Safety Consultants.

Indeed, DCON Safety's greatest resource at the heart of its operations is its exceptional



team of technical construction and safety consultant partners who provide team-oriented services on an as needed basis. Their consultants and alliances with other key individuals and organisations enables the company to provide support to clients in all divisions of design and construction safety. DCON Safety provides an extremely dedicated service to its clients and the company ensures that they are the main focus for its team of professionals.

DCON Safety Consultants is relentless in its support of safe outcomes and safe design quality to help its clients realise their vision, with a rigorous controls approach to tackle big issues head on.

"We offer Health & Safety consultancy advice services to a broad range of clients throughout Ireland. We have some wonderful clients who use our services time and again. Business is good, especially now that the commercial, residential and public service sectors have reactivated themselves." Diarmuid said.

The main services provided by DCON are Project Supervisor for the Design Process (CDM Advisor), Pre-Planning Compliance, Safe Design Adherence, Health & Safety Strategy creation and Expert Witness. Regardless of project size or complexity; they maintain a wealth of expertise in the built environment and generate distinctive and innovative ideas born out of tradition construction service inputs and outputs.

Strategically supporting a positive planning decision is what sets DCON Safety Consultants apart



from the competition. "Our Draft Construction Management Plan offering provides client/ developers the means to demonstrate a commitment to safety in overall planning, coordination and control of a project from construction commencement to completion." Diarmuid continued, "These safeguards seek to support the obligation placed on a client to produce a safe, functional and financially viable project."

DCON Safety provides its clients with intelligent, practical and reasonable physical site safety advice to enhance and support compliance and good practice adherence. The company is able to identify opportunities for improvement and observations of good practice, which are the key factors of its services.

A noteworthy service for the company is its expert witness service to testify authoritatively on behalf of its client on safety and health matters. DCON Safety benefits from Diarmuid Condon's expertise in this area. Diarmuid is a competent safety professional who works



closely with his clients to help them to identify exactly what kind of safety expert they need. Diarmuid uses his extensive network of contacts to recruit precisely the right person to protect his clients' interests and uses his unique perspective to encourage, support and mentor the abilities of his colleagues. Diarmuid is an integral part of the company and ensures that it excels in providing services to its clients, and displays exceptional achievement designing and executing strategic safety plans and systems.

In addition, Diarmuid has contributed his invaluable construction expertise to more than 400 different projects over a 20-year period. He maintains an extensive client list which includes: public sector departments, corporate owners, real estate developers, main contractors, design professionals and infrastructural bodies.

A quantity surveyor by qualification, Diarmuid consistently demonstrates his extensive knowledge and expertise including prior to setting



Diarmuid Condon, Owner of DCON Safety Consultants

up DCON Safety Consultants, Diarmuid was responsible for Safety, Health & Quality consultancy services in Ireland for a global project management/cost management consultancy. "I was afforded the opportunity to hone my technical and soft skills while working on some of Ireland's most recognisable projects." Diarmuid stated.

DCON Safety Consultants impressive client-base includes Hines Ireland, Lioncor Developments, Dalata Hotel Group, daa plc, Maynooth University, Westridge RE, Irish Life, Redrock, Roundhill Capital, various Data Centre clients and many more partnerships with various design practices.

"We would like to take this opportunity to thank them all for their continued support," Diarmuid concluded.

For any further information, please see the details below.

T +353 1 611 1556
www.dconsafety.com



Ignite your dream designs with Artizan Lifestyle



Established well over a decade ago, Artizan Lifestyle specialises in wood and gas burning fires and renewable energy solutions. Boasting a small but highly skilled team, Artizan Lifestyle prides itself on its leading expertise in the design and installation of beautiful fireplaces for both small and large projects. Working with residential and commercial customers, Artizan Lifestyle has a true artistic flair, and uses its creativity to constantly update and develop its extensive portfolio.

With a large showroom in Wokingham, Artizan Lifestyle has a team of skilled designers to help realise your ideas, bringing your dreams to life through hand drawn sketches and computer-generated images to make sure you receive exactly what you've envisaged. Furthermore, Artizan Lifestyle's team of skilled and professional installers help to ensure you are more than happy with the end result.

Supplying to and working with architects, builders and designers, Artizan Lifestyle's fireplaces provide an aesthetically appealing



real thing. "Because new homes are so airtight now, you often don't need the heat of a real fire, but that doesn't mean you should miss out on their aesthetic appeal. These two fires give you the beautiful image of a real burning fire, but without the maintenance required or flue.

"I saw the E-Focus fireplace at the 100% Design show last year, and people were stopping in their tracks to look at it. That's how stunning they are, and they're sure to be a great hit as people invest in their homes and other spaces."

Underpinning this vast range of products and services is an ongoing commitment to outstanding customer service and an acute attention to detail. "This consistent attention to detail is what truly sets us apart. We always aim to exceed our customers' expectations, keeping them in the loop throughout the process. We regularly receive feedback from customers about how friendly and helpful our teams of engineers are.



ground source and air source heat pumps, and domestic and commercial biomass systems.

As a specialist in tailored domestic heat pump systems, Artizan Lifestyle uses only the best components and technology in the design and installation of heat pump systems, and every product comes with a full manufacturer's warranty. Heat pumps are recognised as a renewable technology by both UK and EU Governments, providing an effective and energy-efficient

alternative to traditional heating systems. Artizan Lifestyle offers the latest technology to heat your home and hot water using energy absorbed from the outdoor air (air source) or

ground (ground source). These heat pumps are an established and proven technology, supported by Government incentives and offering an economically viable and flexible domestic heating solution.

Artizan Lifestyle also offers high quality biomass systems. The company is an accredited MCS, HETAS, Fgas and OFTEC installer, with many years' experience in the installation of solid fuel (wood and coal) heating systems, so the transition to solid biomass was a natural



"We're looking to increase our service offering moving forward, keeping customers happy and adapting to the changing marketplace, ensuring we continue to do things that other companies can't. We want to make their dreams a reality and make sure their design happens. So many people want the aesthetic appeal of these beautiful fireplaces in their homes, to really offer the 'wow' factor, and that's what we're aiming for."

Although trade shows have on the whole been postponed for this year, Artizan Lifestyle has previously attended a number of large events, including Grand Designs, 100% Design, Homebuilding and Renovating, and Ideal Home. "These are a really great opportunity to see the fireplaces in person and get the full effect of their beauty."



and welcoming gathering place in a home or commercial establishment, offering warmth and visual allure to encourage conversation and relaxation for everyone in the vicinity.

"As well as manufacturing the equipment for and installing these wood burning and gas burning fires, we are also seeing increasing growth in the renewable energy side of the company," said Lynda Taylor, Sales Director. "It has been growing steadily over the years and in the last 12 months it has seen a significant jump in popularity. We're constantly evolving to keep up with any governmental changes. The pressure is on across the world to be using renewable energy, so this area is only going to continue growing and become more prominent." These renewable energies include



process. After installing its first biomass boiler in 2008, the company has seen an increasing number of projects completed and accredited for RHI payments.

Recently, two of Artizan Lifestyle's high-end designer fireplace manufacturers, Kalfire and Focus Fires, released two fireplaces which are truly ahead of the game, featuring a holographic electric flame that looks like the

If you would like to find out more information on everything Artizan Lifestyle has to offer, head to the website. Alternatively, don't hesitate to get in touch using the contact details below to speak to a member of Artizan Lifestyle's friendly team.

T 01344 356900
office@artizanlifestyle.com
www.artizanlifestyle.com

Leaders in Oak Timber Frame Buildings



Crown Oak Buildings is a manufacturer and supplier of oak timber frame buildings and garages throughout the whole UK. With a plethora of experience, the company has constructed hundreds of oak timber frame buildings and gained industry recognition for its expertise and services.

Established by Simon Hendrikson, for over 25 years Crown Oak Buildings has been providing



both standard and bespoke services for oak timber frame buildings. Crown Oak Buildings is renowned for its high quality manufacture and construction of its oak frame buildings and provides an array of building options including: houses, garages, carports, garden rooms, porches, pergolas, gazebos, stables, swimming pool enclosures and self-build oak timber frame kits.

Crown Oak Buildings provides a full service build package consisting of initial design, planning application, ground works, manufacture and assembly of oak timber frame including weather boarding, up to the tiling and insulation of the roof.

All oak timber frame buildings are manufactured in-house at the company's workshop and have been designed to meet customer specifications ensuring that all the joints are precise and numbered accordingly. (is this just the same as the end of the next paragraph?)

A notable product for Crown Oak Buildings is its manufacture and supply of self-build timber frame kits. Self-build timber kits provide customers with their specified building in a packed form enabling the customer to assemble it easily. The building is manufactured and pre-assembled; ensuring quick assembly it also includes a full set of instructions, screws, nails, pegs

and bolts, making it the perfect product for the self-builder.

One of the main focuses for the company is maintaining its ambition to provide a reliable service for its customers. "We're a family run firm and we ensure that we deliver an honest and reliable service – we run our name on that. We're not the biggest, but we are the best middle sized oak frame business out there."



Simon Hendrikson.

A notable recent development for the company, Crown Oak Buildings has expanded its premises adding an additional workshop with an above office space. "We have a new workshop with new machines which has really sped up production. We have a strong relationship with our team, who have been with us from 10 to 20 years." Simon stated.

In terms of the future plans for the company, Simon shared that "We are currently working on a new website which will allow visitors to create their own 3D building (two storey or single) with our 3D online designer and we will provide them with a quote for their planned project which will allow them to properly visualise the building they want."

For any more information, please see the details below.

T 0173 286 6910
www.crownoakbuildings.co.uk



Wood that works

Since being established as a timber merchant in 1975 by the Whiley family, Hawwoods has become renowned in the UK and worldwide as a leader in the wood flooring market, both technologically and aesthetically.

With headquarters in Carnforth, Lancashire, Hawwoods also has showrooms in London and Manchester, as well as business operations in Australia and a further three showrooms in Sydney, Melbourne and Newcastle. The company also has a growing business in North America with a showroom in New York, plus its first entrance into the Canadian market with a showroom in Toronto. To further its global reach, Hawwoods also works with numerous partners across the world including India, UAE, Portugal, New Zealand and beyond.

"We provide solutions for the wood flooring and wood cladding market," explained Paul Moody, Global Marketing Director. "We offer an end-to-end design and product consultation service to ensure we supply the best possible product to meet the customer's needs, whether that's residential end users, the architecture & design industry, or tradesmen and contractors.



Underpinning its outstanding quality of service is Hawwoods' unrivalled choice of products. "We are constantly evolving the product selection, and our range changes up to 25% on an annual basis.

Furthermore, our connections with global wood flooring mills and manufacturers ensures we are uniquely positioned to source the best possible products, while also staying ahead of the market in terms of product innovation. In addition to this, our stock holdings ensure we can support even the largest scale projects.

"We offer 'wood that works'. We aim to be a solution provider, offering the best possible wood flooring and cladding solutions. Once we've provided the correct solution, our goal is to 'create talking points in spaces', in other words, an installation or product that gets design conversation and excitement flowing."

Recently, Hawwoods launched PurePanel®, a range of seven pre-finished wood veneer boards to tie in with its PurePlank range of flooring. There are six boards in oak and one in walnut, designed to match some of Hawwoods' most popular colours. These 3m x 1.2m boards are incredibly versatile for use in cladding, cabinetry and fabrication, bringing Hawwoods' high quality products to every surface. Samples of the PurePanel range are available to order now.

Moving forward, Hawwoods is continuing to expand its export operations. For the second year in a row, the company has been listed on the Sunday Times International Track 200, which is a listing for the companies experiencing the highest export sale growth. "In the



last year, we have risen up the rankings from outside the top 100 to number 34 on the list, an achievement we are very proud of, and we look forward to continue this in 2020 and beyond," Paul said.

Maintaining a busy calendar of events each year, Hawwoods often attends sector specific trade shows both as an exhibitor and attendee in the UK and worldwide. Recently, the company



attended the Domotex and BAU trade shows, as well as exhibiting at BDNY in New York. Boutique Design New York has been fantastic at raising the profile of Hawwoods within the North American and New York market.

Building upon its decades of success, Hawwoods is continuing to ensure it stays up to date with customers' ever-changing needs. Through developing its digital tools, accreditation as well as expertise around care, maintenance and installation, Hawwoods ensures it remains versatile and adaptable enough to stay abreast of customers' challenges.

See the details below to find out more information.

Contact
T 01524 737000
info@hawwoods.com
www.hawwoods.com/uk

Reach new heights with BalconyLife



Here at Building and Construction Review, we take pride in sharing companies, establishments and organisations that bring the best quality products and services to the industry. With this in mind, we have chosen to feature leading company BalconyLife in this issue of Building and Construction Review.

BalconyLife Ltd has been successfully manufacturing balconies, balustrade systems, staircases, glass canopies and thermal breaks throughout the UK. Specialists in designing and manufacturing cantilever and Juliet balconies, BalconyLife has expanded significantly and supplies a range of balconies for the construction industry from its base in the East Midlands.

so whether you are a self-builder, a house developer or a general contractor, BalconyLife is well equipped to assist customers and ensure they find the right balcony and design solution for them.

Another aspect of BalconyLife's services, buying directly from BalconyLife could not be simpler. By simply selecting the type, style, size and floor/wall construction, BalconyLife will place your order and arrange delivery of your packaged balcony ready for your building work programme. BalconyLife also offers free experienced technical support throughout the whole process to make the ordering and installation of your balcony as simple as possible. BalconyLife will deliver the balcony at the stage you want it and is more than happy to offer any technical support, that you may require.

In terms of BalconyLife ranges of styles and balcony types, the range consist of Cantilever Balconies with various options on the balustrade system and Juliet balconies with various options on the balustrade including specific designs for customers.

The contemporary appearance of the cantilever balconies make it an ideal addition

company, BalconyLife has recently launched a fire rated cantilever balcony, with aluminium decking available and is so confident with its design and finish that they are able to provide a 10 year guarantee against degradation of any parts subject to general cleaning.

The entire range of balconies at BalconyLife also comes with a certificate of compliance for Building Regulations 5 year's manufacturer's



guarantee. Designed for ease of installation the balcony range have all been specifically designed to be straightforward to install by an experienced general builder using the installation instructions provided. All of the balconies are designed to complement the surrounding environment and are available in a wide range of colours to enhance the external façade.

Speaking of the company's future plans, BalconyLife plans to continue its growth and expanding upon its range and adding further features to its products, Adrian told us that, "we plan to grow larger and increase our range of products, improving our products further and be able to provide the highest quality and best looking balconies in the UK."

For any further information or to view the company's extensive range of balconies, please see the details below or feel free to give them a call on the number stated.

T 01509 844 233
www.balconylife.co



Providing an array of services, BalconyLife provides a whole host of services from initial inquiry, design and manufacture to the installation of its balconies. BalconyLife maintains a range of balcony types, styles and sizes that are available to buy directly from the company as complete balcony packages. BalconyLife is a specialist in providing modern, beautiful and space efficient balconies.

"Our ethos provide high quality products delivered and installed, all backed up with a 10 year guarantee," said Adrian Jarvis (MD)

Providing its products for both commercial and domestic customers, the company offers ample amounts of options for customers

to any property to take advantage of outdoor space. The contemporary appearance also provides functional details including controlled drainage to lead away rainwater to a single point. The sleek and elegant soffit panel to the underside provides a neat finish to the underside which is also fire rated to Class A.

The Cantilever balconies are available in modular sizes starting from 2150mm and increasing in length by 1050mm with a range of depths available are 1250mm, 1500mm, 1750mm and 2000mm or alternatively they can provide bespoke sizes to suit development.

In terms of recent developments for the



Market-leading products for the construction, heating & plumbing industries

Established in Melbourne, Australia in 1947, DEKS created the first and original rubber roof flashing, known across the world as the Dektite. In 2003, DEKS was established in the UK, focusing on creating, manufacturing and distributing leading brands within the roofing, heating and plumbing industries. "We strive to provide high quality and user-friendly solutions, backed up by excellent customer service," said Ollie Janes, Managing Director for UK and Europe.

DEKS is based just outside of Bristol, with further locations in Chicago and Melbourne and the holding company, Skellerup Holdings, based in New Zealand. The company's extensive product range covers three main areas: roofing, including Dektites and lead replacement materials; drainage, including channel drainage, rubber couplings, and decorative

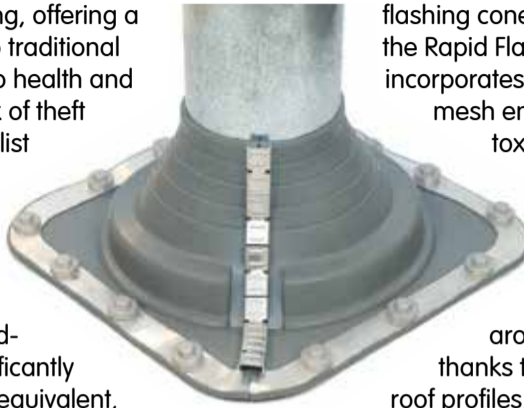
channel drainage; and chimneys, including twin wall flues and gas vent flues. These products are used in a broad range of industry sectors, with DEKS' main customers working within construction, renovation, and the new build market.

Significant benefits can be found across DEKS' three main product areas, thanks to the high standards it adheres to in each of its products. Indeed, DEKS' Dektite is the market leading range of roof flashings, which has been around for over 70 years. In addition to the renowned Dektite range, DEKS also offers Fast Flash

self-adhesive flashing, offering a secure alternative to traditional lead flashing. Due to health and safety concerns, risk of theft and need for specialist knowledge and tools, lead is falling out of favour with many roofing contractors. DEKS' Fast Flash lead-free flashing is significantly lighter than its lead equivalent, making it easier to handle and cheaper to transport. No specialist tools are needed, as it can be cut with just a pair of household scissors, and it can be moulded into shape with your fingers.

Fast Flash lead-free flashing is ideal for any application requiring a quick and secure flashing solution, it can be installed on roofs with a slope of minimum 5° and on almost all roof materials. Fast Flash is environmentally friendly and easy to install thanks to its self-adhesive properties, as well as being highly flexible and workable. What's more, if painting is required or where water is likely to travel from copper or bitumen onto Fast Flash, you can use 100% acrylic low sheen exterior paint.

Another of DEKS' lead-free alternatives is Rapid Flash. This is comprised of the company's industry leading rubber



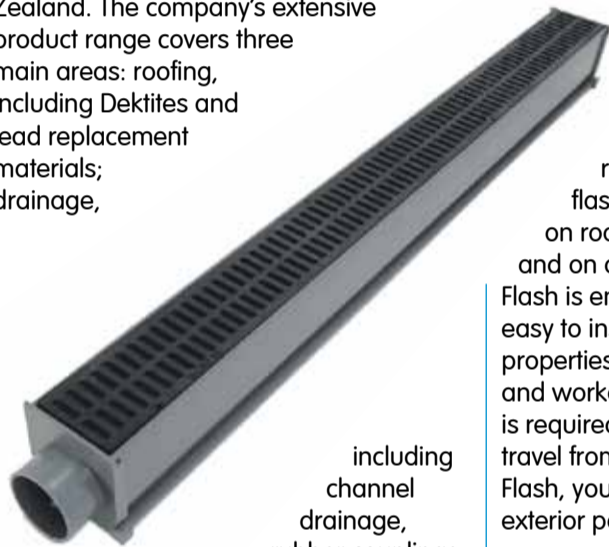
flashing cones mounted to the Rapid Flash base which incorporates a cleverly designed mesh encased in a non-toxic rubber polymer with a butyl adhesive backing. This solution is favoured by roofing contractors around the world, thanks to its suitability for all roof profiles, unique stretchable base, minimal tooling requirements, market-leading sealing system and UV rating.

DEKS also offers highly cost-effective channel drainage, as well as a unique range of decorative channel drainage, including DekDrain Deco and DekDrain Threshold. The Deco is a surface channel drainage for domestic foot traffic or light

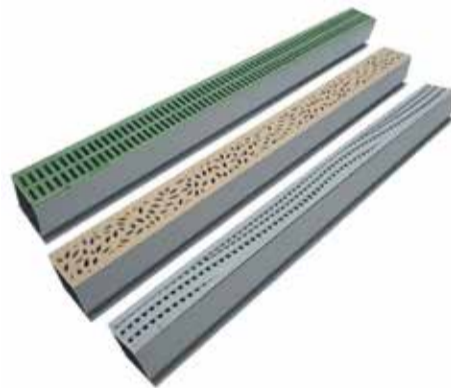


needed as well as reducing installation time.

Threshold offers a unique threshold drain to brighten up a doorstep, as well as keeping water drained away. DEKS offers a choice of three styles, wavy, floral or slotted, in a range of colours. Each length comes with an open end cap to allow connection to below ground drainage pipes, a closed end cap to keep soil or concrete from entering the channel, and one grate of the customer's choice.



including channel drainage, rubber couplings, and decorative



vehicle use, featuring decorative heel guard grating covers which are available in floral and wave designs, as well as a slotted grate option in a range of colours. Each length is 1.8 metres and includes a joining clip to easily connect each length together. This makes a fantastic decorative addition to a garden or driveway drainage in addition to effectively draining away surface water. The Deco range includes 45° and 90° Elbow plus 90° Tees to change the direction of the channel drainage without the need to make cuts on site. Each section is 1.8 metres long, minimising the number of connections

Each length comes pre-assembled and ready to be installed, and both the Deco and Threshold drains are tested to EN 1433 as well as meeting A15 standard when installed according to installation instructions.

Boasting an extensive history of offering the highest quality products, DEKS has undergone significant changes over the last two years, with a particular focus on providing a market leading customer offering with regards to service as well as a range of innovative products. "Moving forward, we are looking to leverage the extensive experience of the wider Skellerup Group," Ollie concluded.

If you would like to find out more information on everything DEKS has to offer, head to the website or get in touch using the contact details below.



T 01275 858866
sales@deks.co.uk
www.deks.co.uk

Traditional brick production specialist



The Bulmer Brick and Tile Company, based in Suffolk, is a family-run business established in 1936. With over 80 years' experience in the industry, the English company truly is a master of its craft.

The Bulmer Brick and Tile Company is renowned for its traditional handmade bricks which, fired in a down draught kiln, have a distinctive finish that blends well with the original London clays bricks. The beauty of the Suffolk company's bricks lies

in their traditional production method. The bricks are made from clay dug from the same clay seam used since Tudor times. The wealth of experience amassed by the company coupled with their respect for the process is what separates The Bulmer Brick and Tile Company from the competition.

Having produced bricks for reputable clients such as the National Trust, English Heritage and Historic Royal Palaces, the company is able to lend its services to both private and commercial



developments. Its facings and specials can be made with almost any texture; with 150 different sizes of facings and a range of over 5,000 special shapes, including all standard plinths, squints and copings and extends to purpose made chimney bricks, terracotta, mullions, jambs, floor bricks, pammets, decorative plaques, garden edgings and a full range of rubbing blocks.



Aside from offering a wide range of clay brick solutions, The Bulmer Brick and Tile Company further offers a select number of additional materials. It is a stockist of Singleton Birch Natural Hydraulic Limes and Lime Putty, available in a range of strengths – NHL2, NHL3.5, and NHL5 – and sold in 25kg bags or 1 tonne bulk bags. Lime has proven to be the material of choice when laying the brick specialist's bricks and especially in the case of conservation work, with its natural strength and tendency to give 'movement' in the construction process favourable.

Among the additional materials offered are lath, chestnut lath and riven oak supplied in bundles, used for plastering or for roofing and the application of shingles. Further, The Bulmer Brick and Tile Company offers sheep's wool insulation, an efficient and eco-friendly insulation solution.

Contact
T 01787 269232
bbt@bulmerbrickandtile.co.uk
www.bulmerbrickandtile.co.uk



The Bulmer Brick & Tile Co Ltd



Bulmer bricks are made from the finest London Clays, dug from our seams almost continually since Tudor times. All Bulmer bricks are hand made, using traditional methods of making, drying and are fired in a coal burning, down draught kiln. This helps to give the distinctive finish that blends so well with the originals. The process takes time – something to consider at the project planning stage.

We are a small family business continuing the traditions of brickmaking on this site dating back to the Middle Ages. Our facings and specials can be made with almost any texture, from coarse veined to smooth with some 150 different sizes of facing and a range of over 5,000 special shapes, including all standard plinths, squints and copings, and extends to purpose made chimney bricks, terracotta, mullions, jambs, floor bricks, pammets, decorative plaques, garden edgings and a full range of rubbing blocks.

We work on large projects for the National Trust, English Heritage and Historic Royal Palaces, but are just as proud of some of the small private work undertaken by individuals.

Please visit: www.bulmerbrickandtile.co.uk

T 01787 269232 | bbt@bulmerbrickandtile.co.uk



**The
 Brickmaker's
 Tale**
by Peter Minter
Only £33.00
 inc postage & packing

Helping to create a health and safety culture for the construction industry

Within this issue of Building and Construction Review we have selected to feature SensiblySafe. SensiblySafe is a leading provider of health and safety services offering a complete solution of health and safety training and consultancy services including competent support, accredited training and documentation production.

SensiblySafe provides a range of health and safety compliant services such as consultancy, training and courses. These services include: Health and Safety Training, SSIP – Safety Schemes in Procurement, Consultancy, First Aid and CITB – Site Safety Plus.

"We offer a full compliance package. We provide services such as consultancy, training via accredited courses such as citb, ukata, highfield suite of qualifications or put on something bespoke to your organisation providing training tailored to your needs, safety schemes in procurements, site inspections and more. We offer a full suite of solutions for health and safety compliancy," said Scott Revill-Bramley, Managing Director.

The main sector that SensiblySafe caters for is the construction industry. "We have a strong background in construction," Scott stated, "I have worked in nearly every job in construction and this has given us a strong understanding of their needs. We know how to engage and communicate effectively with the construction industry."

The main ambition for the company is creating interactive, engaging and effective training and consultancy services. Treating every service with a personal approach, SensiblySafe's services are designed to fit the needs of their client, creating a bespoke health and safety package to work for their business and helping to create a positive health and safety culture among workers within their business.

Providing its services both nationally and internationally, SensiblySafe is the one-stop-shop solution for health and safety compliance for the construction industry. It maintains a team of experienced, engaging individuals with ample amounts of experience in construction and health and safety, and provides businesses with the best solutions to improve, maintain and gain the required skills, qualifications and knowledge for health and safety for their workers and business.

In terms of its health and safety training services, the company offers training to help workers and employers meet statutory and industrial requirements. The courses are offered on an open course basis and can also be delivered in-house on a cost efficient day rate basis.

A few noteworthy courses for the construction industry are the CITB-Construction Skills Site Safety Plus, which includes the CITB SMSTS, CITB SSSTS and CITB Health and Safety Awareness course.

The SMSTS Course (Site Management Safety Training Scheme) was specifically created to assist site managers and potential site managers, to develop their knowledge, awareness and understanding of their legal, moral and social responsibilities in regards to health, safety and welfare on construction sites.

A highly respected qualification, the SMSTS course provides working professionals with the skills to responsibly manage construction activities. The course runs over a five day period and can be attended through one of the company's open courses in customer's local area and if a company has a larger number of attendees, then the course can be delivered in house.

In addition to the five day course, SensiblySafe also provides an SMSTS Refresher course. A two-day course, the SMSTS Refresher course is designed to refresh participants knowledge of site safety, health, welfare and the environment and is a highly interactive course comprised of case studies, classroom discussions, group work and individual/group presentations. The SSSTS course (Site Supervisors Safety Training Scheme) is a course for individuals who require site supervisor's accountability and businesses providing services to construction or civil engineering sites. The course is designed with first line managers in mind, providing supervisory roles with the skills, knowledge and insight into the legal obligations for health and safety, welfare and environmental issues.

The CITB Health and Safety Awareness course is shorter in duration and is conducted over one day. Designed to provide workers in the construction and civil engineering industry with the understanding of the awareness and importance of health and safety in the daily production of their job roles, the course is the perfect stepping stone in preparation for the CITB health, safety and environment test or as refresher training.

Notably, this course is the first step in achieving a CSCS Labourers Card

(Green Card) and CITB Site Safety Plus suite of courses that range from training for operatives into the industry up to Senior Manager/Director.

In terms of the company's future plans, Scott stated that, "In the future we hope to gain more industry recognition for our services for the construction industry. We also plan to increase our client base and help them to gain high standards in health and safety for their workplace."

T 0800 610 1818
www.sensiblysafe.co.uk

consultancy





LET SENSIBLY SAFE GIVE YOU HEALTH & SAFETY PEACE OF MIND WITH THE FOLLOWING CONSULTANCY & TRAINING SERVICES:

- NVQs from **£450***. Skilled Worker to Site Management and everything in between. Get your CSCS card sorted.
- FaceFit testing **£500** for 8 hours testing - unlimited workers.
- First Aid Training from **£80**. Fire Marshall **£50**. Vehicle Banksman **£50**. Abrasive Wheels **£50**.
- Asbestos Awareness **£50**.
- Site Management Safety Training course **£450**, Site Supervisor Safety training **£250** | or delivered on a day rate for large bookings.
- Health and Safety Awareness course to obtain Green Labourer card **£150** or take advantage of our bundle offer: **Your card and Health, Safety and Environment test all in for £220!**
- Make construction tendering simple and let us take care of your **CHAS or Constructionline accreditation from £350**.

Meet your legal requirement with access to competent and health & safety advice with our retained services **starting from £90 a month**.

Full consultancy services offered to support your business big or small.

(All courses priced per person. Discounts available for group bookings, contact for further details.) *NVQ grant available from CITB for eligible companies.

CALL NOW ON: 0800 6101818
Alternatively, visit our website: www.sensiblysafe.co.uk or email at: info@sensiblysafe.co.uk



Harlequin Floors

Harlequin is the world leader in advanced technology floors for the performing arts. Established as the industry choice for architects, building contractors and the world's most prestigious dance and performing arts companies, Harlequin's experience and reputation are founded on the design, manufacture and supply of a range of high quality portable and permanent sprung and vinyl floors, ballet barres and mirrors for dance studios and performance spaces. Forty years after its creation, Harlequin remains as global leader in

its field with offices in Europe, The Americas and Asia Pacific.

Specifying the correct dance floor makes an important contribution to the safe performance of dancers without the risk of slips and falls or longer-term stress injuries. A good dance floor instils confidence in dancers to give full expression to their creativity, safe in the knowledge the dance floor will offer a consistent response. Harlequin Floors have developed floors specifically for dance, offering

the exact requirements needed for varying genres of dance, which commercial grade, industrial and sports floors cannot.

Research in recent years has identified a correlation between the consistency of dance floors and injuries incurred by dancers. When specifying a floor for dance, using general flooring or sports floor standards will not ensure the right floor is installed. Only a floor developed specifically for dance will do. There have been some high profile



examples where floors have had to be replaced by a dance company after the building is complete because the floor was not considered fit for purpose by the dancers using it.

For all your performance floor needs, please contact our technical team:

T +44 (0)1892 514888
enquiries@harlequinfloors.com
www.harlequinfloors.com



FloorStak: A unique levelling product for temporary flooring



FloorStak is the brand name for a range of products aimed originally at the temporary structures market, though the innovative concepts involved have helped the company to find interesting applications in more conventional building projects.

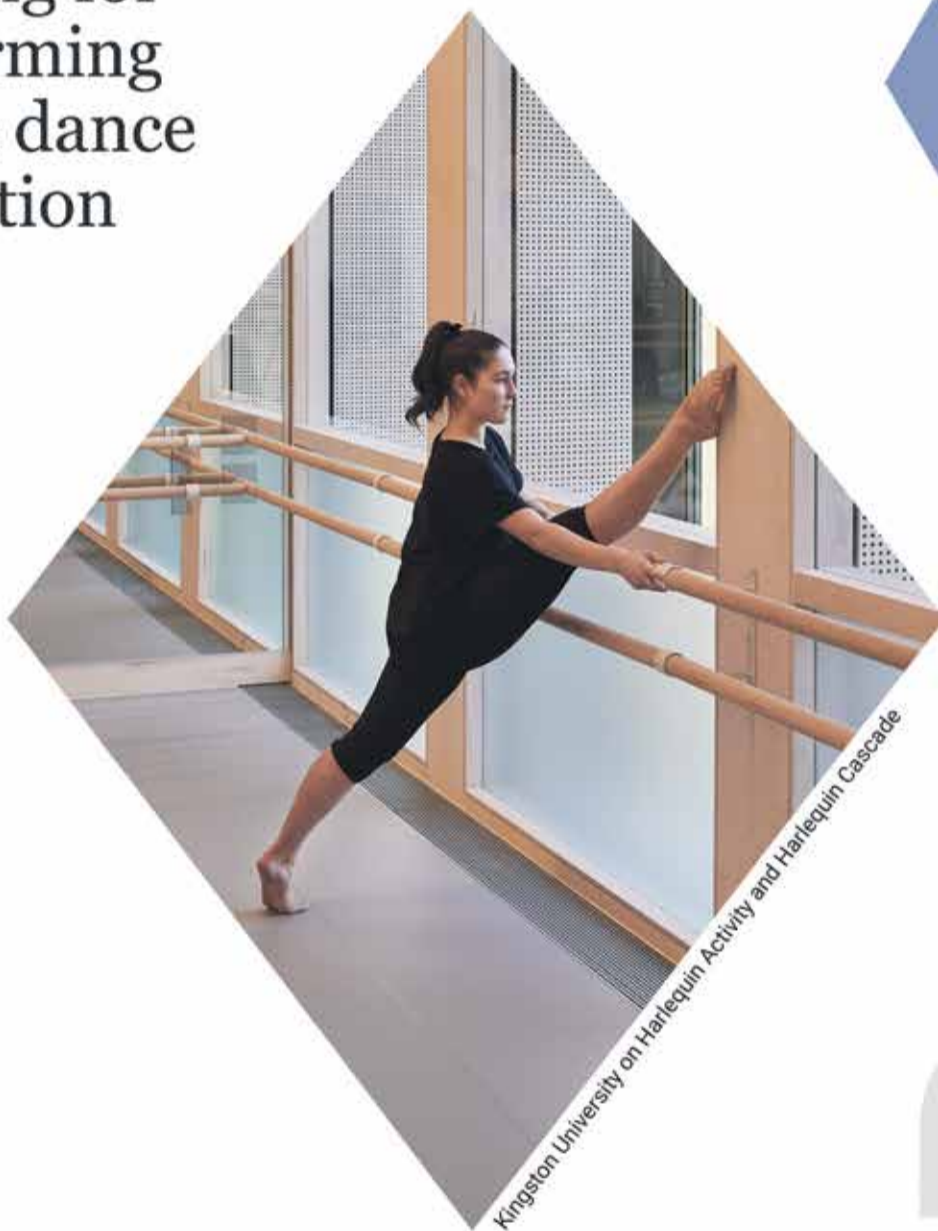
The range includes support and levelling systems for structures and floors, adjustable balustrading, modular steps and height variable access ramps. The design concept for all products stresses safety and reliability combined with ease of installation – critical factors in the 'Event Industry' applications where FloorStak products are extensively used.

These attributes have also helped FloorStak to find favour in other, less obvious settings. A recent project involved the provision of an elevated structural base for the Rugby Clubhouse at Chartres in France, which is situated on the flood plain of the Eure River. The proximity to archaeological excavations of the former Roman settlement meant that conventional groundwork footings were not permitted. Other venues such as Liverpool FC (Anfield) and Chelsea FC have benefitted from FloorStak in de-mountable platforms for disabled spectators, and further afield, supporting the elevated walkway for an Olympic size swimming pool in Taiwan.

The team at FloorStak are confident that their patented and 'TUV certified' products will find many more interesting applications.

Contact
 T +44 (0)121 526 6060
info@floorstak.com
www.floorstak.com

Professional flooring for performing arts & dance education



Kingston University on Harlequin Activity and Harlequin Cascade



dance

The world performs on Harlequin floors

Professional dancers can spend 6-8 hours a day working in a dance studio, meaning it is essential to specify the correct dance floor to reduce risk of slips and falls or longer-term stress injuries.

Established as the industry choice for architects, building contractors and the world's most prestigious dance and performing arts companies, Harlequin's experience and reputation are founded on the design, manufacture, supply and installation of a range of high quality portable and permanent sprung and vinyl floors, ballet barres and mirrors for dance studios and performance spaces.

If you are interested in booking a CPD please contact cpd@harlequinfloors.com

+44 (0) 1892 514 888 architects@harlequinfloors.com

LONDON • LUXEMBOURG • BERLIN • FORT WORTH • MADRID • PARIS • PHILADELPHIA • SYDNEY • HONG KONG • TOKYO • BRNO • LOS ANGELES



Leading online retailer of high-grade hardware supplies



Building and Construction Review is proud to feature Hardware Warehouse for our BCR Recommends profile.

Established in 2012 by Katie and her partner Rob, Hardware Warehouse has seen fantastic growth in the last few years, selling metal and PVC profiles, metal sheets, storage hooks and garden accessories. Initially, the company was focused on serving the domestic market, but now Hardware Warehouse services corporate and trade customers, developing longstanding relationships with companies across the country.

"There are companies which offer the same products we do, but in smaller volumes more suitable for individual customers," Katie explained. "Then there are other large companies which have a minimum order number of 5,000. We sit in the middle of the



two, offering a large stockholding but with no minimum order, delivering stock to the customer's site and even offering morning delivery if they need a particular product for work that day.

"Our specialism is in profiles, and we are very proud of the quality of this range. We hold very high levels of stock and offer next day delivery as standard."

After enjoying steady growth since its establishment, Hardware Warehouse is looking to further expand its ranges over the next 12 months, using the data it has collected on what its customers are buying and want to buy. "We'll be expanding our brass and PVC ranges, as well as looking at offering more environmentally friendly products," Katie said. "We've been doing a lot of research on products made from recycled plastics and how we can offer these to our customers, so it's something we really want to focus on as we move forward."

Of course, with the current global pandemic,

everyone is facing various challenges each day to cope with the significant societal impact. "It's a worrying time but we're still moving forward, looking after our team and doing our best to make it as easy as possible for our staff and customers to carry on as normal."

This kind of excellent customer service has not just come about in response to a crisis; Hardware Warehouse has always focused on offering the best customer experience possible.

"We often get complemented on our level of customer service. We want to solve their problems and get things sorted as quickly as possible. We're a small family business, and often treat our customers like family. We get things sorted and can find things that others can't."



As an online business, Hardware Warehouse is highly versatile and is committed to staying up to date with the latest market trends. "Because we're an e-comms site, we have to stay abreast of the latest developments and any changes with Google algorithms, for example. We listen, we learn and we adapt to what the customer needs."

If you would like to find out more information on everything Hardware Warehouse has to offer, head to the website or get in touch using the contact details below.

Contact
T 0330 333 5030
info@hardware-warehouse.co.uk
www.hardware-warehouse.co.uk

HARDWARE
WAREHOUSE

Intoto Design Ltd



Intoto Design Limited offer independent catering design solutions to develop the kitchen and bar designs. As an independent company we offer completely unbiased advice that fit with the client specific catering requirements and brief. Specific responsibilities include kitchen, ventilation and complete bar/cellar and servery design, competitive tendering and project monitoring. Our experience over the years has given us much repeat business, recommendation and a proven track record and portfolio.

Our portfolio includes a diverse range of completed projects within different sectors of the catering industry from events catering, public houses and eateries, specialist restaurants, hotels, schools, cafés, retail restaurants, golf clubs such as Ryder Cup Clubhouses in both Celtic Manor and K Club resorts & Lahinch GC, Whatley Manor and staff feeding facilities for blue chip companies as well as many restaurants in and around London.

We have most recently carried out the design and specifications and Project works at The new grandstand at The Curragh racecourse, Kildare Ireland. The Fish Hotel, Broadway. The Eden Hotel Collection at many of their hotels including The Greenway Hotel, Bovey Castle, Mallory Court Hotel & The Arden Hotel etc. Pennyhill Park for Exclusive Hotels, Restaurant James Sommerin to name but a few.

Contact
M +44 (0)7967 979109
www.intotodesign.com



Vier Premium is the all new designer lever and accessories range from Zoo Hardware Ltd

Made from Grade 304 stainless steel, the Vier Premium range combines high-quality manufacturing techniques with a series of luxuriously designed levers on an all new slim-line magnetic sprung rose for a sleek aesthetic appeal.

Available in variety of new satin PVD finishes, this hard-wearing coating is ideal for bringing together a suited range of products perfect for putting the finishing touches to any prestigious interior scheme.

For further information on this range visit our website or call one of our friendly sales team.

Call: 01228 672900
Email: sales@zoo-hardware.co.uk
Visit: www.vierdesign.co.uk

Not a member of Zoo Hardware Ltd

Why leasing makes sense when cashflow is tight

How do you invest in the equipment your business needs during uncertain times? With affordable fixed monthly payments and no deposit, finance leasing allows any business to improve cashflow, complete financially-phased projects with immediate effect and provide high-quality modern equipment for your staff even when you cannot afford to make the full investment upfront.

Leasing is an effective way to spread costs over a period of up to five years to

ease the financial burden and drive your business forward. Furthermore, as all leasing payments are tax deductible, it is a solution that will save the business money and is beneficial no matter your financial circumstances.

Launched in January 2020, AJ Products now offers a leasing solution for all your workplace furniture and equipment requirements. From office furniture, breakout spaces and conference furniture to pallet

racking and materials handling solutions, AJ Products has the solutions to help your business improve workplace productivity and employee wellbeing.

We can lend to businesses of all types including start-ups and sole traders. At the end of the lease the products, you can keep, return or upgrade the products as suits your needs.

www.ajproducts.co.uk



Leading services in the water industry



H.D. Services Ltd was first established in 1984 by current company Director, Frank Harris. Based in Buckinghamshire, the company operate throughout the South East and specialise in the design, supply, installation and maintenance of sewage treatment systems, open-loop ground source heat pump systems, water supply boreholes, soakaways and drainage – all the utilities a self-builder may require.

Customer service is at the forefront of the company which is why they provide on-hand advice and support on dealing with the Environment Agency, applying for the domestic Renewable Heat Incentive, and in regards to the several different services they provide. H.D Services have been recognised for their exceptional products and services, receiving regional awards at the South East Green Deal and ECO Awards 2015, the Energy Efficiency and Retrofit Awards in 2016, the Energy Efficiency and Health Homes Awards 2017 and the Energy Efficiency Awards 2018.

Having won awards for their renewable heat installations, we asked Rebecca Taylor (Business Development Manager) what the benefits were. "We strongly believe that the open-loop ground source heat pump systems we design and install are not only the most efficient way to heat your home in our operational area, but also do less damage to the aquifers than drilling for closed-loop borehole systems, as predominantly these use the rotary drilling method. We aim to provide the highest quality open-loop ground source heat pump service available in South East England."

T +44 (0)1494 792000
enquiries@thehdgroup.co.uk
www.hdservicesltd.co.uk



Landscaping News

 **DENDRO-SCOTT™**
 Root Barrier

rootbarrier.com

Protect against damage from tree roots,
Japanese Knotweed and other invasive plant species

DENDRO-SCOTT™ Root Barrier, recognised by the Environment Agency, is known for its quality and reliability. It is flexible and adaptable, specified for all types of projects, from the very large, including new builds, to small residential projects. It can be easily jointed on site, using double-sided butyl tape. It is an excellent and proven way to protect structures and services from **tree roots** and **Japanese Knotweed**.

DENDRO-SCOTT™ Root Barrier comes in 27 stock sizes, from a small 1m x 10m roll, up to a 30m x 30m sheet.

DENDRO-SCOTT™ Root Barrier is used in various ways:

- **Vertically**, to prevent lateral intrusion of roots and rhizomes, to protect underground services and to prevent ingress from neighbouring sites
- **Horizontally**, to protect buildings and surfaces from vertical intrusion of roots and rhizomes, this includes installation below foundations
- **Services**, wrapped with root barrier membrane, to protect pipes, etc.
- **'Cell'**, to avoid the very expensive process of transportation of contaminated soil to a waste facility, licensed for Japanese Knotweed. To comply with Environment Agency guidelines on root spread of Japanese Knotweed, the quantities of spoil can be extremely significant. With a 'Cell', soil is retained within the site, reburied and completely sealed within a 'Cell' of DENDRO-SCOTT™ Root Barrier. The potential cost saving is enormous!



Tel: +44 (0)20 8254 5889
sales@rootbarrier.com
www.rootbarrier.com

George Barnsdale to supply windows for former Dickensian Workhouse

George Barnsdale is delighted to announce it has been chosen to manufacture and install the timber windows for a renowned Grade II listed former workhouse building in Fitzrovia, London. Part of the Bedford Passage Development, the project is being undertaken by University College London Hospitals Charity to provide mixed residential and commercial accommodation.

The Strand Union Workhouse is said to have been used by Charles Dickens as inspiration for his 1837 novel *Oliver Twist*

and was listed Grade II in 2011. A total of 119 timber box sliding sash single and double glazed windows will be designed and manufactured by George Barnsdale in the company's Lincolnshire factory alongside some timber flush casement windows and doorsets. The company's installation team will fit them this autumn/winter. Commenting on the project,

Steve Dixon, Sales Director said "We are delighted to have the opportunity to work on this exciting development. We have delivered timber windows and doors on

numerous projects throughout London but this has very special provenance with its links to Dickens and Florence Nightingale. We really do pride ourselves on the part we play in bringing these historical buildings back to life with our bespoke products."

George Barnsdale's experience with such commercial projects is extensive and a vast amount of thermal and acoustic data is held by the company from the research it has conducted on behalf of clients. As a result, the team is able to offer the optimum solution in terms of performance

**GEORGE
BARNSDALE**

Est. 1884

whilst retaining the original aesthetic of the building.

T 01775 823000
enquiries@georgebarnsdale.co.uk

The UK's only dedicated glamping site designers



Glampitect specialises in designing glamping sites in the UK. Our clients benefit from our experience in concept design, technical drawing and planning permission preparation and submission. The reason we know all of this is because we own our own glamping site, so have been through all of these processes ourselves.

This means that we also understand the ins & outs and dos & don'ts of running a successful glamping business.

We can also design and manage your website & market your business online, in order to increase the likelihood of regular bookings in order to maximize your return on investment.

Glampitect can connect you with many of the UK's finest glamping manufacturers, whether you are interested in Glamping pods, Yurts, bell or Safari tents.

We recently developed a calculator tool, which can estimate the total cost of your dream glamping site build and suggest return on investment. For more inform please follow the link below.

From information provided in the calculator tool, Glampitect can produce a feasibility study to determine how likely your site would be to gain planning permission and return a profit. See information opposite.

www.Glampitect.co.uk



Stay safe with Energetics Technology

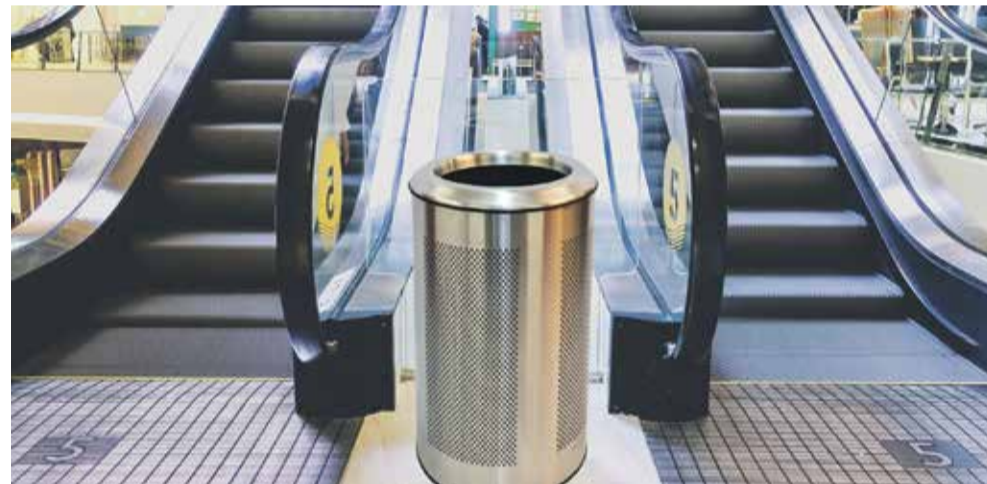
In recent times the prevalent threat of terrorism in busy public spaces has seen the removal of litter bins, at the detriment of environmental cleanliness, resulting in expensive litter clean-up operations.

The reason for their removal is that traditional litter bins make a terrorist bomb more efficient; this is because of the fragmentation of the litter bin; which significantly increases the level of serious

injury to pedestrians nearby.

Energetics technology's Blast Resistant Litter Bins offers the practical safe solution to this by preventing fragmentation and blast over pressure, protecting pedestrians, whilst still delivering an environmentally responsible solution to waste management.

Energetics Technology offer three blast



resistant litter bin models, with additional variations of each model.

Energetics technology tell us that it is their mission to design, test and manufacture to the most rigorous quality control procedures, blast mitigation solutions to help protect people and assets against explosive threats and to help maintain business operational continuity.

In addition to their extensive range of Blast Resistant Litter Bins, Energetics Technology manufactures building protection solutions, and blast mitigation units.

If your business is facing a blast threat, we suggest you contact Energetics Technology to find a cost effective, reliable solution.

Contact
T 01283 732339
sales@energetics-technology.com
www.energetics-technology.com

Will my glamping idea really work?

Find out with a Glamping Feasibility Study

Discover specifics about your glamping idea:

- Will it make money?
- Will it gain planning approval?
- How much will it cost to build?
- and much more

~~£500~~

£297

for Magazine readers ONLY!

Other services:

- Glamping Concept Design
- Glamping Pre-Planning Applications
- Glamping Full Planning Applications
- Services and Building
- Warrant Applications
- Glamping Business Setup Help
- Glamping Website Design
- Autonomous Booking System Setup

Request your FREE Glamping Feasibility Study information pack today:

contact@glampitect.co.uk
0131 248 3019
www.glampitect.co.uk

Scotia Cabins

Scotia Cabins are based in Scotland, and cover the whole of the UK, allowing you and your customers to access the very best in bbq cabins, garden rooms, and self catering accommodation buildings.

Being the only UK manufacturer of bbq cabins, and one of the few who make outdoor buildings in the UK, you can be assured of not only the highest quality of build, but also of safety. With the longest warranty on the buildings available on

the market, investing in a cabin from Scotia, will be one of the smartest, and wisest decisions you will make.

With 4 main sizes of bbq cabin, there is one for every size of garden. With our garden rooms, these start at 8m sq, and go up to 30m sq (can be bigger too if needed!) There are 3 options for self catering cabins, giving you many ways to give yourself a USP, and we are also able to offer our cabins as classrooms and

outdoor learning areas as well. What could be a more exciting environment for children (and adults) to learn in?

To discuss what you are looking for, get in touch today, for a personal conversation about how we can help you another dimension to your home or business

www.scotiocabins.co.uk
info@scotiocabins.co.uk



Phone: 01738 850 203
 E-Mail: caroline@scotiocabins.co.uk
 Wester Greenside Farm, Newburgh
 Road, Abernethy, Perth, PH2 9LJ



Scotland's Premier Cabin Company Bringing the outside, inside

You deserve the best cabin possible, to relax in, be safe in, to work in and to provide all this, and more to your own business too.

As Scotland's only supplier of UK made, trademarked cabins, we can provide this service, with all the personal touches you get working with a local, family run business.

With the longest guarantee on the market, you can be reassured of getting a quality cabin, along with

that 1-2-1, celebrity service.

With 4 areas of expertise, in BBQ Cabins, Garden Studios, Classroom Cabins and Self-Catering Accommodation, you have a variety of options to fit your space and plans. Your cabin will be bespoke to you, thus giving that personal touch even more.

A warm welcome awaits, giving you the chance to try the cabins on for size, and find the right one for you.

The Van Insurer presents a positive outlook for the van market

Data released by the Society of Motor Manufacturers and Traders (SMMT) earlier this month painted a very **positive picture** for the van sector. Not only were 2019 registrations up by 2.4 per cent over the year, but it was the most successful year for van registrations since records began.

The latest statistics from insurance price comparison experts **The Van Insurer** have further reinforced this positive outlook. According to their latest data, they processed a hefty 7 per cent more van quotes in 2019 compared with the previous year.

Ed Bevis, Marketing Manager at The Van Insurer, said: "The latest registration statistics reinforce the positive outlook we've gleaned from our own data. Here at The Van Insurer, we've enjoyed a bumper year for insurance quotes, which shows huge market appetite.

"We're seeing both existing and new customers coming to The Van Insurer for their quotes, safe in the knowledge that our 'Cheapest Price Guarantee' will ensure that they get the best deal. We're looking forward to helping even more van drivers find the insurance options that best suit their needs for this year and beyond."

Most popular vans of 2019
 With more vans on the road than ever before, The Van Insurer has analysed its quote data from last year to identify its Most Popular Vans of 2019.

Ed says, says: "Here at The Van Insurer, we are used to handling quotes for drivers

with various specific needs but it's always interesting to see how some models stand the test of time, emerging as frequent favourites.

"Whatever their requirements, we like to remind all of our customers that we can help to find a quote that works for them."

For more information on **The Van Insurer**, including its **Cheapest Price Guarantee**, visit www.thevaninsurer.co.uk or follow on social media via Facebook @VanInsurer, Twitter @Vaninsurer and Instagram @thevaninsurer.

*The Top 10 list comprises the vans for which The Van Insurer received the most quote requests from January to December 2019.

**Insurance quotes relate to average comprehensive premiums. Prices are dependent on external factors including regional variation, individual van specifications and use.



The Van Insurer →

Why Aspen fuel is becoming the popular choice for professional businesses in the UK



ASPEN FUEL has long been the number one fuel of choice for many of our European neighbours and slowly in the UK, we are catching up to their high health and safety standards. Aspen UK have been working hard to educate about how fuel choices can improve working practise, and now with the likes of UKFISA and LANTRA recognising that Alkylate fuel is the recommended way to fuel machinery, the information is filtering out into the main stream businesses.

Did you know that 1 chainsaw running on regular petrol emits the same amount of benzene (a carcinogenic substance) as 57 modern cars? By switching to Aspen fuel, you could have 6 chainsaws in use before reaching the benzene emissions of one car running on regular petrol.

It's not just operator health that is protected by using Aspen there are many other benefits which you and your business will benefit from.

- ▲ Free deliveries directly to your premises on bulk orders – no downtime travelling to collect fuel.
- ▲ Long shelf life allows for fuel to be left in machines for long periods of storage without any damage occurring to the fuel system.
- ▲ Premixed 2-stroke version eliminates the risk of mixing errors or accidents
- ▲ Less machine down time due to breakdowns.
- ▲ Machines last longer and are easier to service.
- ▲ Easy for operators to select the correct fuel and avoid costly mixing errors.
- ▲ Improved working environment for your staff by reducing toxic emissions.
- ▲ Easy to monitor fuel consumption and factor into job costs.
- ▲ Simplified accounting with fewer receipts.

Our direct delivery system guarantees you the best price on Aspen fuel without having to leave your site.

For more information about Aspen fuel and how it can work in your business please visit <https://aspenfuel.co.uk/benefits/professionals/> or contact the team on 01929 551557 (EXT 2)

GROUNDSMAN®

Leading by design

Turf Cutters

- Versatile with Exceptional Traction & Cutting Ability in All Conditions
- Sod-Cutting, Mole-Drain, De-Compact, Trench and Cable Insertion Blades
- Easy to Operate with Low Operator Hand-Arm Vibration Levels (HAV)





Turf Aerators

- Interchangeable Solid & Hollow-Coring Tines, Dethatch & Over-Seeding Cluster Tines
- Consistent Depth down to 12cm with Low Maintenance Crank Driven Mechanism
- Proven Reliability & Performance

Versatile
Reliable
Performance...



Tel : +44(0) 28 2766 7049
info@groundsmanindustries.com
www.groundsmanindustries.com



BECAUSE WE CARE...



ABOUT OUR TWO-STROKE ENGINES. PROFESSIONALS USE ASPEN ALKYLATE FUEL.



Find your Aspen dealer at www.aspenfuels.co.uk



Hauraton drainage systems at Bonus Arena - Hull Venue

Built on brown-field land located on the edge of the main shopping district in Hull and adjacent to Princes Quay, the Bonus Arena – Hull Venue and its associated multi storey car park were opened in August 2018. The £36 million development progresses the legacy of the social and economic impact generated by Hull's 2017 UK City of Culture status.

The Arena, designed by AFL Architects, is a state-of-the-art music and events

complex with a flexible capacity of up to 3,500 people. The facility can provide a venue for concerts or corporate conferences in an 800 seat auditorium. A 2000m² adaptable space can be utilised for sporting events or exhibitions and trade shows.

Surrounding the Bonus Arena is a public realm laid with grey stone paving and landscaped by re-form Landscape Architecture Limited with trees, lawns,

flowerbeds and permanent stone seating.

An effective surface water drainage system was essential to ensure all weather access to the venue. 140 metres of Hauraton RECYFIX® PRO 100 channels with FIBRETEC® heel-safe gratings were chosen for the job which blended well with the stone paving and would resist damage from applied grit rock salt in freezing weather.

The material, PA-GF used to make the FIBRETEC® grating, was especially developed by Hauraton; the tough, UV resistant, fibre reinforced moulding offers high stability and huge strength for its weight. Complying with loading category Class C250 (BSEN 1433) the grating can easily take the weight of commercial delivery vehicles.

The design is a real innovation as its non-corrosive material provides a visually appealing surface finish that retains its colour. The slots are super smooth, elliptical openings with the moulded bars having slightly raised triangular bosses along their outside edges. As well as

providing an elegant appearance, the feature ensures surface water is directed into the slots.

The RECYFIX® channel component is made from 100% recycled PP. The PRO 100 model is factory fitted with the FIBRETEC® grating and only weighs 4.6kg, so the unit was easy to handle and quickly installed on site.

For more product information go to www.hauraton.com

For other Case Studies go to www.drainage-projects.co.uk



Hauraton high capacity surface drainage installed at Vertex Business Park, Bristol

The Vertex Business Park is a 4.8 acre site located in the Emersons Green Enterprise zone. Being just four miles from junction 19 on the M4 motorway, the 11 warehouse/office complex has tree lined boulevards and generous landscaped areas incorporating dedicated car parks, concreted access and hard standing designed to handle HGV traffic. With such a large concreted area an effective surface water drainage system was essential.

Having supplied high capacity surface water drainage channels for hard-standing areas at numerous distribution centres thorough out the UK, Hauraton were confident their RECYFIX® HICAP® high capacity channels would comply with the stringent specification asked for by the contractors.

Three sizes of RECYFIX® HICAP® F-2000, 3000 and 5000, with a loading category Class F900 (900kN) were used to drain the HGV hard standing and car park areas at the Park. All the sizes supplied had fixed ductile iron, 14mm open slot inlets finished with KTL, a rust resistant coating. By affording a superior overall hydraulic performance, the 216 metres of channel installed, provided a water storage volume totalling 8,904 litres.

The HICAP® system generally allows engineers and contractors' flexibility in layout by reducing number of channel runs normally required to drain a given area. This can mean less underground excavations, materials and vastly reduced installation time. Usually as there are fewer runs required, the surfaces strength is not compromised whilst future maintenance and cleaning will also be reduced.



With laden HGVs weighing up to 44 tonnes, manoeuvring trucks impose an enormous twisting stresses on the surface drainage components. So not only must the area be efficiently drained, the installed system has to withstand the twisting forces exerted by truck wheels.

Cat Jones, the Hauraton Project Manager, was certain the company's high capacity channels chosen for this job would easily match the specification demanded by Kore Construction; "The RECYFIX® HICAP® F channel components are made from



specially formulated tough RECYCLED polypropylene (PP) and as each one metre channel used, including its ductile iron inlet, weighed less than 25kg it allowed one-man-lift, so greatly simplified the handling and logistics for the contractor who found the combination of a tough PP channel and ductile iron slot inlet highly resisted to site damage during installation".

For Case Study go to www.drainage-projects.co.uk



Hauraton channels drain Blue Badge scheme parking bays at RHS Wisley

On 10th June 2019, Alan Titchmarsh, MBE, opened the first phase of The Welcome Building and surrounding landscape at Royal Horticultural Society gardens, Wisley, Surrey. The new facility has transformed the experience for visitors to the gardens with new buildings including a spacious arrivals hall, café, shop, plant centre and a 100 seat restaurant. There are now three large car/coach parks including Blue Badge scheme easy access bays for visitors in park two.

One hundred metres of Hauraton RECYFIX® PRO 100 channel system, fitted with FIBRETEC® C250, 9mm HEELSAFE slot gratings, was used by groundwork sub-contractor GPB Construction Ltd to drain the asphalted Blue Badge parking bays for visitors. The channels were installed between the bays and the path leading to the entrance of the new arrivals hall.



Since its launched in February 2010, the RECYFIX® PRO 100 surface water drainage channel, featuring the innovative FIBRETEC® grating, has been specified and successfully installed in numerous United Kingdom drainage projects, including rail station platforms, public squares, shopping malls, sports-fields,

tartan running tracks and many other commercial and private applications.

The material, PA-GF used to make the FIBRETEC® grating, was especially developed by Hauraton; the tough, UV resistant, fibre reinforced moulding offers high stability and huge strength for its weight. Complying with loading category Class C250 (BSEN 1433) the grating can easily take the weight of cars and commercial delivery vehicles. The design is a real innovation as its non-corrosive material provides a visually appealing surface finish that retains its black colour.

The FIBRETEC® C250 HEELSAFE slot grating was specifically designed by Hauraton R & D engineers to enhance the flow of water into the channel. The slots are super smooth, elliptical openings with the moulded bars having slightly raised triangular bosses along their outside edges. As well as providing an elegant



appearance, the feature ensures surface water is directed into the slots. This configuration also helps eliminate any cross-flow over the grating.

The RECYFIX® PRO 100 channel component is made from 100% recycled polypropylene (PP). The six sizes offered are 160mm wide and range in height from 75mm to 250mm with the FIBRETEC® grating factory fitted on all models. As the largest unit is only 5.8kg, the channelling is easily handled and quickly installed on site.

For Case Study go to www.drainage-projects.co.uk

T 01582 501380
www.hauraton.com

Hauraton high capacity channel system drains extensive car park at Skypark, Exeter



145 metres of MONOTEC 100/230mm, 136 metres of 100/280 and 45 metre of 100/380. 100mm is the channel grating width and the internal dimension.

The 230mm (overall height) channel model has a cross-section of 190.5 cm², the 280mm, 245.5 cm², and the 380mm, 355.5 cm². The 326 metres of channel supplied provide a total

hydraulic capacity of just over 7717 litres.

Hauraton Limited introduced the MONOTEC system just over two years ago. Skypark joins the numerous installations successfully completed in the United Kingdom.

The MONOTEC one metre long channel component is of a sturdy monolithic design where the HEELSAFE grating and the tongue and groove linking system are integral to the channel moulding. The whole unit is made of tough, virtually unbreakable polypropylene (PP) formulated to be very resistant to daily temperature fluctuations from frost conditions to strong sunlight, including the Ultra Violet (UV) spectrum.

PP is naturally resistant to de-icing salt. Complying with the requirements of EN 1433, the PP is given its UV resistance by adding just sufficient stabiliser so that the structural strength of the material is unaffected and a consistent appearance is maintained. The MONOTEC channels have a loading category of up to Class D400.

Cat Jones, Hauraton's Project Manager for South West UK was particularly pleased with the comments she received from Sam Reed, Site Manager for G Works Construction "Sam was surprised how strong and sturdy these MONOTEC PP channels were. Cutting mitres was easy on site and no accidental damage to any component was experienced. The tongue and groove features on the channels



provides easy assembly of the moulded components and facilitates the alignment of the channel run so reducing installation time for the groundwork contractor".

All Hauraton surface water drainage systems' comply with European Standards (hENs) and carries the CE mark".

For RECYFIX® MONOTEC product specifications go to www.hauraton.co.uk. CIVILS section

For other case studies go to www.drainage-projects.co.uk

The Skypark Business Park is located just North of Exeter International Airport, Devon and East of the M5 off Junction 29. The Park is a Joint Venture Partnership between St.Moden, the UK's leading regeneration specialist and Devon County Council.

The development, when complete, will cover 130,200 m² (1.4 million ft²) and comprise of office, industrial and manufacturing premises. Ancillary retail development and a hotel are also planned as part of the scheme. Set in landscaped grounds, it includes numerous car parks requiring effective surface water drainage.

In this phased development, three sizes of the Hauraton RECYFIX® MONOTEC high capacity surface drainage system have so far been installed in the extensive asphalt car parks servicing Skypark Units 10 and 20.



Would You Like to Read a, "GENUINE SUCCESS STORY" !!

Space-Plug has gone from a former fitter's brainchild to sales in excess of 3.5 million units!! That former fitter, entrepreneur and Managing Director of Space-Plug Ltd, Cliff Petit, told us, "I'm over the moon! In all honesty the concept had been in my head for such a long time. It's actually been 25 years in the making... But it's now well and truly made!"



Space-Plugs approach might be unusual in the modern world but it seems the old school business plan of not spending it until you've made it is paying off for them. Cliffs brother and business partner Nige recounted, "It seems like yesterday we were thrilled taking half a dozen packs to the post office... last year I had the logistical nightmare of creating 24 Pallets of retail stock in the lounge of my 2 bed flat!"

But this year they are set to break out of the, "Cottage Industry" style of business and the company is looking to gear up in earnest with plans for major investment directly from company funds. Cliff reports, "Taking a bit of time to build a business has proven to be the right move. There is such a trend to look for the instant gratification of major investment but avoiding that means we are now able to invest in major growth without any leverage against future profits safe in the knowledge that Space-Plug is hugely popular with an ever growing list of delighted users." He continues, "Space-Plug hits 5 star reviews across the board and the "Orange Doofer" fan club just keeps growing. As someone who's done the job I know, if you're not into Space-Plug you're just missing out!"

These brothers are definitely doing things in their own way with their own light hearted manner. "The company was started with just £3000 borrowed from the bank of Dad!" states Cliff smiling. "This year Space-Plug is growing fast and our joint investment plan with our fantastic new manufacturer based in Sussex, Masona Plastics is looking to top £200,000!"

Their plans as well as the new manufacturing partnership include, new commercial management input, new tooling for the Mk II plug, new automated packing machinery, new patent applications, new products, new Skus, new territories, new markets, new distribution, new media, a new website and of course many new customers.

This really is a genuine, old school, British success story and we're wishing Space-Plug, Cliff and Nige the best of luck that it continues.

plugs@space-plug.com
www.space-plug.com



Screwshop

NE Fasteners Limited is a family owned company with over 30 years' experience, primarily specialising in screws fixings & fasteners for the DIY, hardware, building, joinery and furniture manufacturing sectors. NE Fasteners prides itself with offering expertise, competitive prices from local and internationally sourced standard and bespoke products.

More recently, Screwshop has evolved from its established sister company, NE Fasteners

and has also proven a huge success with its online shop.

Situated in a 7,000sqft warehouse in Cradley Heath in the West Midlands, we are able to provide a wide range of finishes, including zinc, electro brass, black chrome, satin chrome, bronze and nickel, and packaging options, ensuring that many buyers consider us to be a key and valued supplier.

With friendly and experienced staff, our aim

is to offer excellent service with our next day delivery service and give an opportunity for our customers to let us manage all fixings, fasteners and component requirements competitively.

Screwshop has a trade counter which is open daily 8am-4.30pm. Have a look at our online shop www.screwshop.co.uk, or give us a call on 0121 559 8866 with your enquiries and we will give you our best attention and prices at all times.



Roofing News

HPR-025

Liquid Roofing

Unit 4 Aldridge Depot
Aldridge
West Midlands
WS9 8SR
United Kingdom

Simple. Seamless. Quality.

Check out our new website...
WWW.HPR-025.COM



Discover some of our HPR-025 Liquid Waterproofing Systems...

Super

HPR Liquid Waterproofing Membrane 025-IQC is part of our BBA approved system used in conjunction with a suitable HPR-025 primer, depending on substrate and HPR Fibreglass Matting 025-RF150. Fast curing and application allowed down to 0°C.

Add HPR Polyurethane Resin 025-CTOP - a moisture triggered urethane topcoat to provide a UV stable finish (**HPR-025 Super Plus**)

Elite

HPR Liquid Waterproofing Membrane 025-ST is part of our BBA approved system for applications where customers require a WET ON WET style. Again, used in conjunction with a suitable HPR-025 primer and HPR Fibreglass Matting 025-RF150 chopped strand matting. The use of HPR Polyurethane Additive 025-STCAT is an accelerator and will allow for the WET ON WET process.

Add HPR Polyurethane Resin 025-CTOP - a moisture triggered urethane topcoat to provide a UV stable finish (**HPR-025 Elite Plus**)

Ultra Plus

HPR Liquid Waterproofing Membrane 025-IA is our ETA approved system for when clients want a UV stable finish. This finish coat is used in conjunction with a suitable HPR-025 primer, HPR Liquid Waterproofing Membrane 025-IQC base coat and HPR Fibreglass Matting 025-RF150 reinforcement matting.

We also offer a Solar Reflective White version to reflect sun radiation.



- BBA Approved - BR00FT (4) - 25 Year Warranty
- Specialist products for wet-on-wet application
- Commercially attractive & excellent service



Value engineered stormwater attenuation tanks

We are proud to feature Tubosider U.K. Ltd for our BCR Recommends profile, for the manufacture of its leading corrugated steel pipes for their value engineered storm water management systems, culverts and tunnels.

Based in St. Helens, Merseyside, Tubosider is committed to finding the most effective solution, designed to meet engineer's specifications and site requirements. All Tubosider systems are designed by its expert design team and made to order at the company's St. Helens factory in Merseyside.

"We continue to go from strength to strength, ensuring we keep pace with the requirements of the drainage market," said Anne Duckworth, Managing Director. "For more than 30 years we've supplied the industry with corrugated steel culverts and bespoke stormwater attenuation tanks used in underground drainage systems. These are supplied

in Galvanised Steel or alternatively with an additional Trenchcoat finish for an extended design life. The versatility of a Tubosider system can lead to a reduction in the number of manholes and associated drainage runs required compared to other drainage systems, whilst still providing full accessibility.

Working directly with Tubosider's design team the Customer can create a stormwater system that meets their specific needs, Tubosider can offer an infinite number of layouts using pipes from 0.3m to 3.6m diameter.

In addition to the above benefits, as all tanks are manufactured and factory-fitted with access shafts, ladders, inlet, outlet connections and flow control accessories, there is no need for fabrication work to be carried out on site. This brings additional cost savings reducing installation time,

which is mostly a simple, speedy pipe laying exercise

Tubosider will be attending FloodEx on 26-27 February, promoting its drainage systems, be sure to go along and see what they have to offer. For more information and to stay up to date with all of Tubosider's latest developments, head to the website or get in touch using the contact details below.



Contact
T 01744 452900
info@tubosider.co.uk
www.tubosider.co.uk

Assurance for your heating systems, all year round

Arrow Valves Ltd have introduced new product packages – specifically for commercial heating systems. Installations need to be designed so that we control the maximum temperature that the system reaches, but we also need to have adequate management in place should this maximum be exceeded.

These include the Autofill Pressurisation unit, featuring:

- ▲ Category 4 backfill protection: complies with water regulations for filling of "non-house systems", negating the need for a filling loop
- ▲ Pressurisation Unit is Only 300mm Squared: meaning it is extremely compact, saving space
- ▲ No integral tank: reducing risk of legionella
- ▲ All components accessible: completely serviceable
- ▲ Volt-free high and low cut out switches: adjustable to suit requirements on site

Now available as a package complete with suitably sized expansion vessel, a tried and true package for heating system management:

- ▲ Simplifies specifying and buying: one item to be priced and procured, saving time
- ▲ Combined warranty: commissioning and servicing of the unit and charging the vessel can be completed at the same time – offering support and peace of mind
- ▲ Quality assurance from one supplier
- ▲ Price saving offered for the package

We can provide help with vessel sizing – our website features a handy guide to vessel sizing, based on a radiant system with a flow and return of 82° C/ 71° C and a static head of 10 meters. We can provide you with a more accurate calculation based on more system parameters: static head (m), flow and return temps (c), boiler output (kw), working pressure (bar) if you can provide these values.

For more information please call 01442 823123 or visit www.arrowvalves.co.uk



VARME
Floor Heating Systems

solutions for all floors

- Exceptional Customer Service
- Full Technical Support Design and Installation Services
- Maintenance Free Heating

Tel: 0115 983 4259 Fax: 0115 963 2317 www.varme.co.uk

Which glass of water would you drink?

"Midi-Break" prevents contamination

Wall mounted Break Tank & Booster Set providing Fluid Category 5 backflow protection

The neat and compact stainless steel cabinet is unobtrusive and hygienic – ideal for installation in kitchens and bathrooms

Applications: Single waste bin washing tap, sinks with hoses, clothes / dish washing machines and showers in healthcare premises

Once a water company supplies water... They don't want it back!

Three models BTMIDI 1/2A/3A – up to 0.28 Lt/s – see "Boost-A-Break" for higher demand applications

Arrow Valves

Tel: 01442 823 123 Email: enquiries@arrowvalves.co.uk

www.arrowvalves.co.uk

The Water Regulations Solution Specialist

WELCOME TO ARMATHERM™ STRUCTURAL THERMAL BRIDGING SOLUTIONS

Minimising energy loss and improving building envelope performance

Armatherm™ is one of the leading suppliers of structural thermal break materials for the construction industry. Our goal is to provide architects, structural engineers and building design professionals with effective solutions to prevent thermal bridging.

Typical Thermal Bridging Locations

Balcony/Canopy Connection Masonry Shelf Angle Connection Wall Cladding Attachments Foundation to Wall Transition Column Base Connection

01274 591115 sales@armadillonv.com www.armatherm.co.uk

Atherm™ Thermal Bridging solutions

Thermal bridges are highly conductive structural elements that create heat transfer between the exterior and interior of the building thermal envelope. Thermal bridging occurs through any material that is more conductive than the insulation surrounding it. The conductive heat transfer due to thermal bridging has been recognised as a considerable factor in building envelope heat loss.

Thermal bridging through steel and concrete structures can therefore have a significant impact on a building's energy performance. Thermal bridging can reduce the R value of a wall assembly by as much as 50% by interrupting continuous insulation. Reducing heat flow through a building's thermal envelope reduces energy consumption as well as potential condensation issues. To achieve higher R values, thermal bridging and air leakage must be minimised. As early as 2006, many European countries had already instituted improved energy rating systems for new buildings to better control and reduce domestic energy consumption. Nearly 10 years ago, in response to an EU initiative to improve the energy performance of buildings even further, Armadillo Ltd. developed its first thermal break material, Armatherm™ to prevent heat loss due to thermal bridging.

Since 2011, drawing on Armadillo Ltd.'s experience, Armatherm™ has been working with architects and structural engineers in North America to improve building design details and reduce heat loss due to thermal bridging within the building thermal envelope.

T 01274 591115
Sales@armadillonv.com
www.armatherm.co.uk

premier[®]
guarantee

WE ARE TECHNICAL EXPERTS

Providing guidance
and assuring quality

STRUCTURAL WARRANTIES AND
BUILDING CONTROL FOR NEW HOMES

PREMIERGUARANTEE.COM
0800 107 8446

MD Insurance Services Ltd is the Scheme Administrator for the Premier Guarantee range of structural warranties.
MD Insurance Services Ltd is authorised and regulated by the Financial Conduct Authority.