

## Building & Construction Review



### Brickfab

Brickfab create the best prefabricated building products on the market through innovation, investment and consistent quality, making it easier than ever for their customers to build quickly, efficiently and safer, with great long-term performance.

Working to the principles of lean manufacturing and continuous improvement, Brickfab differentiates itself through service, innovation, quality and commitment. Their vision is to be the first choice for their people, customers, suppliers and investors. To enable this, their whole approach is fair, honest, hardworking and innovative. The company has grown to almost 100 employees and serves many of the UK's national and regional housebuilders, builders' merchants and architectural practices to build better homes. The team supports clients with excellent customer service, regular meetings with procurement stakeholders and site visits to ensure their customers are able to have input to product design and Brickfab fully understand customer needs. Minimising customer effort, Brickfab offer free-of-charge takeoffs, 2D/3D CAD drawings and competitive prices.

Whilst being a market-leading manufacturer of brick products, the company also incorporates Brickfab GRP Products. Backed by BBA & CGFMA certification and their own 10yr warranty, their brick and render effect GRP chimneys will soon be joined by a stone effect range. The speed and ease of install is further helped by factory fitted lead to provide a complete chimney for site. Brickfab are the only UK manufacturer proudly able to offer both BBA and CGMA certificates on both brick-clad chimneys and full GRP chimneys.



The GRP range is completed with a range of 4no door entrance canopies; a plain flat canopy, decorative flat canopy with kneelers, an apex canopy and a mono-pitch canopy. The latter two can be made ready for tiling on site or with a GRP roof.

Sales Director Robert Evans explained, "We keep things simple for the customer, working hard on product quality, product design and a consistent, prompt delivery aim. It's about ensuring the customer has a design they literally approve of, followed by the delivery of great products when we said we would. Our expertise and manufacturing capability means we're able to design solutions for site or translate drawings into prefabricated products. Either way, we help builders build"

T +44 (0)1495 759555  
sales@brickfab.com  
www.brickfab.com

### New guide promotes best practice in drain & sewer lining

A new technical guide aims to explain best practice in the use of no-dig sewer and drain lining. The guide, created by drainage specialist Lanes Group, also explains the pros and cons of the main lining techniques available to construction and maintenance contractors.

Lining technology has advanced significantly in the last decade, with new techniques available to support lining of chemical effluent systems, large diameter pipes and complex pipe systems. This includes the development of associated technologies, including robotic milling systems for preparing pipes for lining and opening lateral connections once liners are installed.

The guide explains the principles behind cured in place pipe (CIPP) installation, and the three main techniques available – ultraviolet (UV) light CIPP, hot water CIPP, and ambient CIPP. All three techniques involve the insertion of a liner – made from felt or flexible glass reinforced plastic. A resin, or chemical catalyst, impregnated in the liner is then cured to create a tough, waterproof pipe-within-a-pipe.

Lanes is a UK leader in pipe lining. At the end of 2018, it invested £1m in three new UV CIPP lining systems, including one mounted on a bespoke pod for rehabilitating pipes and culverts along railways and in off-road locations.



The company has been among the first to use lining to strengthen highway drains as part of smart motorway modernisation programme, and to use UV lining to rehabilitate industrial pipes that need chemical resistance.

The guide – Lanes Best Practice: relining – is the latest in a series of guides about drainage issues published by Lanes.

Lanes Best Practice: relining can be viewed here: <https://www.lanesfordrains.co.uk/commercial/help-advice/guide-drainage-relining/>

All other guides in the series can be viewed here: <https://www.lanesfordrains.co.uk/commercial/help-advice/best-practice/>

[www.lanesfordrains.co.uk](http://www.lanesfordrains.co.uk)



Glatthaar  
See on page

4/5



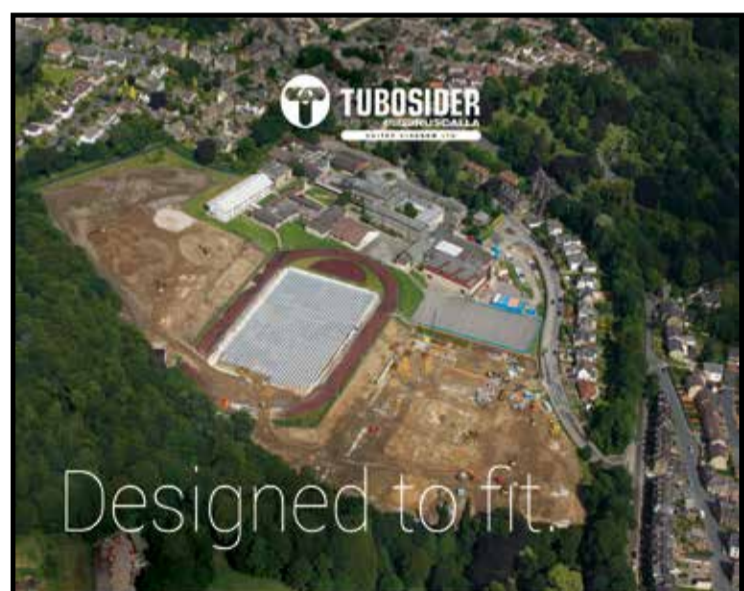
AJ Products  
See on page

09



Wonderwall  
See on page

14



Designed to fit.

There's no 'one-size-fits-all' at Tubosider. Whatever your project needs, our single store stormwater tank systems are designed to suit your discharge rate, return period, site dimensions and project budget.

Call us today to find out how  
01744 452 900 | [tubosider.co.uk/singlestore](http://tubosider.co.uk/singlestore)

### Stand out from the crowd with Engel 'Safety'



No matter what the job, if it involves working out in the open, day or night or whatever the weather, it's important to be easily seen. Engel Workwear offers a comprehensive collection of water and wind resistant, high-visibility, protective outer-clothing which caters for almost every work situation helping wearers to keep both safe and comfortable whatever the circumstances.

Made from fluorescent Polyester or Polyester and cotton mix suitable for industrial laundering and all fully complying with European and International safety and protection standards, the Engel 'Safety' range consists of jackets, trousers, bib-overalls, boiler suits, safety vests, sweat shirts, T shirts and even

shorts. For extra protection against cold weather the COMBINE shell jackets with an inner zip-up layer give added warmth.

Available in all sizes with many of the items specifically designed to be especially comfortable for women, the Engel Workwear 'SAFETY' collection is available predominantly in fluorescent orange or yellow with 'LOXY' reflector bands for maximum visibility.

Contact: Gareth Bladen  
T +44 (0)7759 520034  
gbl@f-engel.com  
[www.engel.eu/en](http://www.engel.eu/en)



Zoo Hardware  
See on page

22



Premier Guarantee  
See on page

23



Bauder  
See on page

24





The Bulmer Brick & Tile Co Ltd



Bulmer bricks are made from the finest London Clays, dug from our seams almost continually since Tudor times. All Bulmer bricks are hand made, using traditional methods of making, drying and are fired in a coal burning, down draught kiln. This helps to give the distinctive finish that blends so well with the originals. The process takes time – something to consider at the project planning stage.

We are a small family business continuing the traditions of brickmaking on this site dating back to the Middle Ages. Our facings and specials can be made with almost any texture, from coarse veined to smooth with some 150 different sizes of facing and a range of over 5,000 special shapes, including all standard plinths, squints and copings, and extends to purpose made chimney bricks, terracotta, mullions, jambs, floor bricks, pammments, decorative plaques, garden edgings and a full range of rubbing blocks.

We work on large projects for the National Trust, English Heritage and Historic Royal Palaces, but are just as proud of some of the small private work undertaken by individuals.

**The  
Brickmaker's Tale**  
*by Peter Minter*  
**Only £33.00**  
inc postage & packing

Please visit: [www.bulmerbrickandtile.co.uk](http://www.bulmerbrickandtile.co.uk)

T 01787 269232 | [bbt@bulmerbrickandtile.co.uk](mailto:bbt@bulmerbrickandtile.co.uk)





# The Bulmer Brick and Tile Company – Specialists in traditional brick production

The Bulmer Brick and Tile Company, based in Suffolk, are a family-run business established in 1936. Able to boast over 70 years' experience in the industry, the English company truly are masters of their craft. With this extensive experience brings an expert knowledge of the industry, and this knowledge and experience is passed down directly to the customer. Experience is something only hard fought for and won; for a company to operate successfully for near on a century is an admirable achievement, proving a testament to the quality service Bulmer Brick and Tile provide to customers.



The Bulmer Brick and Tile Company is renowned for their traditional handmade bricks which, fired in a coal burning and down draught kiln, allows them the distinctive finish that blends well with the original London clays bricks. The beauty of the Suffolk company's bricks lies in the traditional method by which they are produced. In fact, the bricks are made from clay dug from the same clay seam used since Tudor times. The wealth of experience amassed by the company coupled with their respect for the process is what separates The Bulmer Brick and Tile Company from the competition.

Having produced bricks for reputable clients such as the National Trust, English Heritage and Historic Royal Palaces, the company are able to lend their services to both private and commercial developments. Their facings and specials can be made with almost any texture; with 150 different sizes of facing and a range of over 5,000 special shapes, including all standard



plinths, squints and copings and extends to purpose made chimney bricks, terracotta, mullions, jambs, floor bricks, pannels, decorative plaques, garden edgings and a full range of rubbing blocks.

Aside from offering a wide range of clay brick solutions, The Bulmer Brick and Tile Company further offer a select number of additional materials. Stockists of Singleton Birch Natural Hydraulic Limes and Lime Putty, the distinctive material is available in a range of strengths – NHL2, NHL3.5, and NHL5 – and is sold in 25kg bags or 1 tonne bulk bags. Lime has proven to be the material of choice when laying the brick specialist's bricks and especially in the case of conservation work, with its natural strength and tendency to give 'movement' in the construction process favourable.



Among the additional materials offered are lath, chestnut lath and riven oak supplied in bundles, used for plastering or for roofing and the application of shingles. This material may not always be in stock, yet the team can usually obtain it within 3-5 days of being notified. Further, The Bulmer Brick and Tile Company offer sheep's wool insulation, an efficient and eco-friendly insulation solution.



Adding to their diverse portfolio of products and services of exceptional quality, the brick specialists stock Holkham linseed paints and other linseed products. Produced traditionally – from cold-pressed, boiled linseed oil without the use of lead oxide – using only 100% natural linseed oil, Holkham paints add a touch of class to whichever surface it covers. Lasting up to 3 times longer than modern paints, Holkham's linseed paints are suitable for painting the interiors and exteriors of buildings and furniture, internal doors, metal windows and floorboards.

Utilising their extensive knowledge, the team at The Bulmer Brick and Tile Company offer consultation services on all things brick related. This might involve consultations regarding lime, or an assessment of sites culminating in a survey and reports written to Conservation Officers, English Heritage and Local Councils, for instance. The Bulmer Brick and Tile Company always keep a stock of the standard sizes but most historic buildings have a character of their own, which can only be preserved by providing the correct size brick in a range of colours that will successfully blend with the original. The company therefore work closely with builders, architects and surveyors where possible to ensure that the bricks produced are right for the building and meet their customers' requirements. The Company can work from photographs and



samples, and they are able to come to the site if required. Production lead times vary depending on complexity.

Committed to providing an outstanding service to clients, The Bulmer Brick and Tile Company go to great lengths to ensure that no matter the application, each client is getting the most out of their brick solution. From the preliminary selection through to quotation and commissioning, you are guaranteed committed, proficient, safe, secure and personal support from The Bulmer Brick and Tile Company.

If you would like to get in contact and find out more about their specialist brick and tile designs, then do not hesitate to pick up the phone today.

T 01787 269232  
[bbt@bulmerbrickandtile.co.uk](mailto:bbt@bulmerbrickandtile.co.uk)  
[www.bulmerbrickandtile.co.uk](http://www.bulmerbrickandtile.co.uk)



## READER COMPETITION

As part of our readership competition, you could be in with a chance of winning £50 worth of Marks and Spencer's vouchers by simply answering the question below.

**Name one organisation for which The Bulmer Brick and Tile Company have produced bricks for?**

Email your answers to  
[buildings@bestpracticeuk.co.uk](mailto:buildings@bestpracticeuk.co.uk)  
 and find out if you're the lucky winner!

Please mention where you picked up your copy of Building and Construction Review.





Glatthaar are dedicated to providing bespoke, long lasting basements, fitting the needs of each individual homeowner. Whether it's for an extra room, a storage space, a DIY workshop space, Glatthaar can build the best basement for you.



## Why Choose Glatthaar?

- Family owned business since 1980
- The market leader in basement construction delivering over 5000 projects each year
- Glatthaar delivers a basement system and not just components sourced from external suppliers
- One company to the client, we do not use external contractors
- State of the art innovative off-site production
- Our projects are all fix-priced – no hidden surprises
- 10 year company warranty
- 10 year insurance backed warranty against water ingress
- Member of The Passivhaus Trust, The Guild of Master Craftsman and the NaCSBA

Find out how you can build the basement of your dreams. Get in touch today!

**Call 01932 344454 or visit [www.glatthaar.com](http://www.glatthaar.com)**



# Bespoke, waterproof and long lasting basements



**In this issue of Building and Construction Review, we will be looking into the basement specialist company Glatthaar Fertiggeller and how they have managed to build up a reputation as one of the UK's leading prefabricated basement specialists.**

Glatthaar was first set up in 1980, and now have almost 40 years of experience in the industry, now delivering 5,000 basements a year all over Europe. From their headquarters in Germany, Glatthaar are able to develop innovative and bespoke basements which offer the very best in reliability and durability. The company operate across the whole of Europe, with their basements installed in homes and buildings far and wide.

Here in the UK, they have worked all across the country with self-builders and home architects, helping to build the best basement for the home in question, whether it's a new build or for an extension. There are a number of reasons home owners seek basements. In addition to massively increasing the amount of available space and interior design options, they also significantly increase the value of the property.

Unlike your typical contractor, Glatthaar are dedicated to providing the best service for their customers and ensuring their basement is as long lasting and stable as possible, and of course able to fit the needs of the homeowner. Whether it's for an extra room, a storage space, a DIY workshop space, Glatthaar can build the best basement to suit your needs.

The waterproof AquaSafe® basement features precast concrete panels, additional tanking of external joints to prevent seepage, and a number of optional additions. However even without the extras, the AquaSafe® basement is already 100% guaranteed waterproof. For those really curious, Glatthaar even have a floating house where you can see the basement in action.

In addition to the AquaSafe® basement, Glatthaar also have a Baby Basement which provides additional space at a fraction of the typical cost. Ideal for those seeking a storage or utility room, this particular basement features a basement slab, twin panel external walls and a reinforced concrete ceiling. Quick and easy to set up, inexpensive, and providing the perfect extra space for everything from storage to wine cellars to study space, the Baby Basement has proven highly popular across the country.

On top of their expert basements, Glatthaar also prioritise great delivery of service, with speedy installation and in-house engineering. For this issue, we spoke to Anthony Spinney who explained, "Here at Glatthaar everything is done by our highly trained and long experienced engineers. From design to fabrication to installation of the



As one of the leading prefabrication basement specialists in the UK, Glatthaar have a whole host of benefits that sets them apart from their competition. Perhaps the most important one is their ability to provide a insurance backed warrantee against water ingress. Water ingress is a basement's worst nightmare. Most commonly entering through the wall to floor joints, water entry can cause water stains and leaks within the basement, and worse yet, once inside, repairing and preventing further ingress can often be complicated and costly. Thankfully, Glatthaar are able to guarantee water tightness with zero ingress, and last year, the company finalised an agreement with insurance partners Buildzone in order to guarantee this.



basement through to after sales, only Glatthaar employees are involved in this process, they do not use external contractors, Glatthaar take care of everything that the customers need.

During the entire process, Glatthaar work closely with the customer to ensure the basement is coming along exactly as they envisioned. Whether it's a basement that mirrors the floor space of the entire house, or is larger, or even shorter, the end goal is always complete customer satisfaction. Better yet, Glatthaar also provide a personal point of contact for each customer, meaning they can stay updated and in the know regarding the progress of their basement from one well informed source. They are also given knowledgeable advice

before, during and after the basement is fabricated and installed.

Anthony added, "Thanks to our excellent basements and customer service, we have won numerous awards over the years. This includes being chosen by the public via survey to win 9 out of the 10 categories in Focus Money magazine for the last three years. Thanks to this success, we are seeing rising sales, including across the UK and Ireland, which we are keen to continue and see progress."

As one of the leading prefabricators basement companies, Glatthaar attend a number of tradeshow every year where they are able to showcase the innovative design and construction that goes into their basements, as well as connect with the industry at large and potential clients. Some of the ones they have attended include Grand Designs, Eco Build and the Home Build and Renovation Show.

If you would like to find out more about Glatthaar and how they can help you build the basement of your dreams, be sure to get in contact with the team using the details below. More details on their many different basement styles and bespoke service can also be found online.

**Contact**  
T +44 (0)1932 344454  
[www.glatthaar.com](http://www.glatthaar.com)



Architect: Frances Forward, Winchester



# The home of innovation and design for high-quality glamping products



For this issue of Building and Construction Review, we are happy to announce that Universal Glamping has been selected for our **Commitment to Excellence award**. This is a result of their high quality glamping products.

Originally set up as "The Logpod" in 2007 by Trevor Richardson, Universal Glamping was established by Trevor's son, George Richardson, in 2017. Based on their home farm and campsite in the Brecon Beacons National Park, South Wales, they are industry leading glamping pod designers and manufacturers, providing high quality glamping products that have the best value for money on the market.

Indeed, Universal Glamping provides everything you need to start setting up the perfect glamping site. Their product range also now includes canvas structures and heating solutions, as well as pods, and their design team can help campsites create unique accommodation that will entice every kind of holidaymaker.

Some of Universal Glamping's main customers include campsites and holiday parks that are looking to explore the glamping craze and offer further accommodation for their guests. They also see interest from couples who are looking at starting their own glampsite as a secondary income and retirement plan. It is without question that Universal Glamping has garnered an outstanding reputation with their customers: "Many of our customers choose to stay with us because we are young, friendly, passionate, enthusiastic, helpful and understanding," says Bradley Richardson. "We are technically brilliant and always provide as much value to our customers as humanly possible. Quality and value is the objective: we are building the best reputation in the business.

"In the past six months, we have created working partnerships in the UK and Europe. A great deal of time has been spent on developing these relationships to ensure growth and success for

everyone involved. Recently, we created working partnerships with some of the industry's leading companies, like Carbanon in Europe and Sutton Hospitality Consultants in the UK."

Based on their ethos of constant improvement and development, in September 2018 Universal Glamping had a re-brand which has continued to develop successfully over the past few months. In January 2019, new systems and processes were put into place in order to increase operational efficiency, and they are also now recruiting for new staff, with exciting opportunities for a production manager, assembler, and 3D artist. They are set to grow their UK operations by 100% this year, and are planning another 100% growth year on year until 2022. They are also receiving interest from Europe, especially from France, Belgium, Germany, Spain, and Portugal.



In fact, they are currently developing this market with their European partners and are set to start manufacturing operations in central Europe in 2020.

Some of Universal Glamping's main products, their glamping pods, are available in a range of different sizes and specifications. They are a premium range of top quality camping pods which can be delivered to a site fully assembled and ready for occupancy. With a stunning rustic exterior that will fit into any countryside or domestic environment, the inside of the pod boasts warmth, comfort and cosy high quality furnishings to create the perfect home away from home.

Another excellent offering from the outstanding creative design team at Universal Glamping is the GlampLoft, a modular canvas structure which provides year-round accommodation. The GlampLoft is a stand-alone glamping construction that is the first of its kind in numerous ways. One of its innovations is its insulated canvas with nanotech low-voltage radiant heating technology integrated into the surface, which provides efficient and effective direct radiant heat. Furthermore, it is constructed with two stories, a flexible downstairs communal area for



cooking, eating, and socialising, and an upstairs loft space which comfortably sleeps up to four adults.

Universal Glamping have also developed another revolutionary product: the GlampRAD. This is an innovative standalone radiant heater panel which has been developed for glamping and park home industries, offering an efficient and cost-effective alternative heating solution. Radiant heating is gaining popularity in the global marketplace, and the GlampRAD has the ability to provide higher levels of comfort, efficiency and health benefits over traditional heating methods.

It has been developed as a primary heating system that can be installed during construction or retro-fitted as an afterthought. Boasting an easy to use mechanism, GlampRAD requires no annual servicing, maintenance or repairs due to having no running parts, and it provides the optimum level of comfort at a low cost. It operates at a surface temperature of

70-80°C, emitting 60% far-infrared radiation with the remaining 40% being convective heat. Infrared is a wave form that permeates outwards from the surface and travels through empty space until it reaches solid mass. This mass then absorbs the radiation, generating heat and becoming a connective heat source itself. With a 36-48V supply, the GlampRAD is extra safe and doesn't require a qualified electrician for installation. It is produced in canvas or stainless steel panels and is available in a variety of colours.

It is evident that Universal Glamping provides unique glamping products of the highest quality, which are sure to be excellent and cost-effective additions to any campsite. For more information, head to their website or use the contact details below.

**Contact**  
T +44 (0)1269 853957  
sales@universalglamping.com  
www.universalglamping.com





# Net-Zero Building Supplies Ltd: Innovative and energy-efficient building materials are revolutionising the industry



For this issue of Building and Construction Review, we are happy to announce that Net-Zero Building Supplies Ltd has been selected for our **Commitment to Excellence award**.

Based in Standish, Wigan, Net-Zero Building Supplies Ltd is the main UK distributor of Quad-Lock insulated concrete forms (ICF) building systems. Quad-Lock has copious benefits for both the constructor of the building and its eventual occupants, and Net-Zero Building Supplies Ltd is leading the way in providing energy-efficient building methods throughout the construction industry.



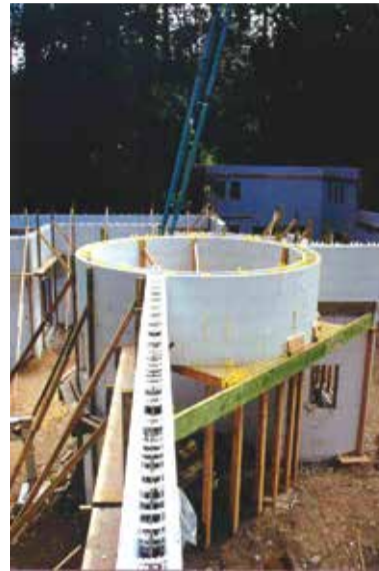
Quad-Lock has experience supplying their system in the UK for over 20 years, and was established as Net-Zero Building Supplies Ltd in January 2019 in order to provide a more extensive range of products for energy-efficient construction. They can now offer all the structural components for the building envelope, and to complement this, their sister company Net-Zero Homes Ltd can assist in an array of extra services. They can help with design, building, drawings and shell construction including foundations and ICF walls and roofs, offering a quick and certified construction technique for developers. The range now includes a low value flush UPVC window system.



We asked Stephen Campbell to tell us a bit more about the company: "The market for this is rapidly expanding due to the value that insulated concrete form structures can bring to self-build and developer led construction projects. The product is marketed directly in the UK to cope with the increased activity, and we now have the opportunity to include insulation products using flame retardant grade EPS, supplying

passive standard slab designs, as well as a new and innovative warm roof design using I-foam hybrid warm roofing panels. All of our stock is held in the UK, meaning we can also provide prompt delivery times."

Quad-Lock ICF structures have an extensive range of benefits for architects, engineers, contractors and home owners. For architects, its increased versatility and design flexibility means it can be shaped to accommodate all of the design elements of modern buildings, forming wide openings, arches, corners, any angles and curves with almost any radius without extra hassle. Its panel systems allow architects and engineers to design and work to any dimension, and to build in lintel or column reinforcements. Quad-Lock is also more resistant to natural disasters, rot, mould and pests, and is up to eight times stronger than houses built from traditional methods, with solid reinforced concrete being nearly impenetrable.



For contractors, Quad-Lock provides the opportunity for increased business, due to the high satisfaction of the owners of buildings made with the ICF structures, meaning the customers usually refer the product and builder to other parties. Contractors can also enjoy reduced labour costs, as experienced installers can erect 3 sq. meters per man-hour, depending on the project. A single crew can install a

complete wall, eliminating the need for multiple subcontractors to complete framing, furring, sheathing and insulation.

There is also a fast learning curve for unskilled labour, meaning they can use in-house crews and reduce crew size. Furthermore, there is no capital investment in forming products, meaning there is no additional cleaning, maintenance, storage or transport costs.

Net-Zero Building Supplies Ltd also provide a service and support programme, which offers everything a contractor needs to sell, estimate and install their building solutions. They provide tailored product support including an installation video, training seminars, technical literature, and personal technical support, as well as offering sales support.

In addition to proving highly beneficial for the design and construction processes, Quad-Lock also offers extensive advantages for the home owner. Whilst costing the same as homes built using traditional methods, home owners can save 70% or more on their energy costs, with superior



insulation boasting U-values of 0.28, 0.21, 0.15 and lower. The ICF structures offer no air infiltration, less dust and pollen, and no potential for mould or rot, and they possess Sound Transmission Class (STC) ratings of 50+, meaning a home made with Quad-Lock is much quieter to live in as opposed to those made with other manufacturing methods. Furthermore, Quad-Lock boasts exceptional structural integrity, ensuring the finished property can withstand hurricanes, tornado winds, and associated flying debris. It possesses reduced maintenance and operation costs due to its outstanding resistance to time's wear and tear, and is fire rated for up to four hours, tested to EU standards.



Complimenting our range of products, we now offer a high performance, UPVC window range. These units have double rebated sash providing extreme weather protection. They can be triple glazed to achieve 0.9 U values and zero % air leakage. They are available in a variety of external colours.



Quad-Lock ICF structures boast an abundance of advantages, making it possibly the most beneficial of any construction system. All of Net-Zero Building Supplies Ltd's work is undertaken by experienced ICF trained contractors, and can be covered by insurance backed warranties. If you would like to find out more information, you can contact Stephen Campbell using the details below.

**Contact**  
M +44 (0)7771 311311  
netzerobs@gmail.com



# Lendon Containers: Specialists in hire, sales and conversions of shipping containers



So whether you're looking for a cost-effective, simple and mobile storage solution either for rent or purchase, or for a unique conversion for almost any purpose, Lendon Containers is your best option. Using Lendon Containers' for storage truly is a fraction of the cost of other popular solutions;

with discounts available for long-term storage rental this could be as little as £7 a week!

T +44 (0)207 350 1940  
info@lendoncontainers.co.uk  
www.lendoncontainers.co.uk



For this issue of Building and Construction Review, we are happy to announce that Lendon Containers has been selected for our **Commitment to Excellence award**. This is due to their ability to sell and transform shipping containers.

Based in the Clapham Common area of London, Lendon Containers was founded over 20 years ago by the company's namesake Lendon Meaby.

Lendon Containers sell and rent marine shipping containers, though in reality what they offer is limited only by your imagination. The sturdy containers are available either for hire or for purchase, and are very competitively priced; containers can be rented from as little as £9 a week, plus VAT. Containers available for rent are either 20ft or 40ft x 8ft x 8ft 6ins or 20ft ISO containers. Hiring a 20ft container offers nearly 14 square metres – 32 cubic metres – of space.

You might be thinking: why would I want to rent a shipping container? Well, the question should perhaps be why not? Shipping containers are an extremely cost-effective and flexible storage solution on their own (unlike a storage warehouse, they are transportable).

It is no wonder Lendon Containers have built a repertoire of satisfied customers spanning a diverse range of sectors, including: The Army, Local Authorities, Leisure Facilities, Construction, Parks and Garden Centres, Hospitals, Static Storage Centres, Schools, and Utility Companies.

The company's containers are not solely hired or purchased for their storage capacity, however, with a great many of their clients converting their containers for all manner of purposes. You truly are limited only by your imagination when converting marine shipping containers for alternative uses, the possibilities are endless. Just some of the uses of containers purchased from Lendon Containers are: generator units, laboratories, clubhouses, secure site offices, chemical stores, pop-up bars and food stalls, to name but a few.

What's more, the experienced team at Lendon Containers can help the customer with the entire conversion process; from the design of the container right the way through to fitting it out and transporting it to your location, the team can be with you every step of the way – there is no project too big, nor too small. There are many examples of previous conversions available to the customer, with sample materials and styles available, too!



## TAKING YOUR WORKPLACE TO NEW HEIGHTS

ajproducts.co.uk

- Head office ▶
- Specifications ▶
- On-site ▶
- Seeking inspiration ▶

**Moving up in the world?** Making workplaces safer, healthier and more convenient for staff through ergonomic design has been one of the cornerstones of AJ Products' interior solutions and product development since the company was established in 1975.

AJ Products offers ergonomic solutions for every type of workplace - innovative products for a healthy and active work-life.

Visit us online at [www.ajproducts.co.uk](http://www.ajproducts.co.uk) or call our friendly sales team, you'll be amazed at what we do!

ajproducts.co.uk 0800 634 4369 @AJProductsUK /ajproductsuk



# Ergonomic solutions for happy employee's and happy workplaces

Based in Farnborough, Hampshire, with its Head Office in Sweden, AJ Products UK LTD offer ergonomically designed furniture and equipment for offices around the UK and Europe. The company was founded by Anders Johansson, specialising in the manufacturer of workplace furniture. Since their inception, they have grown at an unprecedented rate and today are present in over 20 countries.

AJ Products boasts a diverse selection of products for any type of company in the UK market. Providing exceptionally crafted furniture and products for the workplace, AJ Products are perfect whether for use in the Office, Warehouse or across various Industries.

In addition, they produce utility specific furniture for use in Changing Rooms, Canteens, Schools and the Education sector. They also offer racking, shelving, goods moving equipment and thousands of other product lines. Better yet, AJ Products offer a free of charge space planning and design service, helping customers come to the best layout solution for their space.

Bringing a touch of Swedish design to their products, AJ Product's diverse range has a unique and modern twist. With a key focus on making British business take action on making their workplaces a healthier place to be and ensuring that they look after their staff, AJ Products have just launched a series of new inventive sit stand products to help tackle the immobility of



desk type work and help workplaces be more healthy and proactive in their regards to the wellbeing of their staff.

Based on research papers from Educational Faculties and Governments, standing at work has been linked to a reduced risk in the employee's chance of getting Type 2 Diabetes, Heart Problems and Musculoskeletal problems. According to this research, not getting enough exercise through sedentary jobs can lead to numerous health issues. In fact, statistics have shown that 15 million work days were lost in the UK in 2017 alone, just in relation to back problems.



The inventive sit stand products effectively tackle the immobility of desk type work and help workplaces become healthier and more productive. The range also includes products such as height adjustable desks, anti-fatigue mats and active seating. Through their attentive customer service, AJ Products aim to provide a healthier work service to all offices, and by encouraging a proactive approach to reducing health issues, their sit stand products are proving to better the mobility in all industries involving desk based and sedentary work.

A new feature of their ergonomic sit stand product range is a specially designed meeting table. This electronic sit stand desk enables companies to host standing meetings where everyone in attendance can comfortably stand instead of sit. It has shown to result in more productive and healthier meetings, compared to sitting in the wrong position for a period of time and becoming listless from so much sitting. Accompanied by their anti-fatigue mats and active seating, this innovative meeting table compliments the sit stand furniture ensemble.

For this issue, we got in contact with the UK Managing Director for AJ Products, David English, who explained, "AJ Products will continue to expand on its 15,000 products to ensure we continue being a one stop shop for our clients. We will strive to passionately push for a healthier workplace by utilising sit stand desks, active seating and matting."

'Surprisingly More' is the company's ethos and demonstrates their vast range of products, as well as reflecting how there is always something more to offer which can benefit users in more ways than one! It comes as no surprise that in Sweden, they are known as the 'happy company' which is a credit to their vision of making people and employees as happy and as healthy as possible whilst at work, a job which the AJ Products team is more than happy to do!

In addition, AJ Products also provide a fast and free delivery service and constantly stay on top of the furnishings market to ensure their quality products are offered at the right price. Over the decades, AJ Products have managed to maintain their status as a leading mail order and web company for the very best ergonomic office furniture, materials handling and storage solutions.

Along with selling their products to both big and small corporate clients in all market sectors, they are sure that within their catalogue and website, there is something for every business. With continued growth and expansion in the last 12 months, across all divisions and markets, AJ Products creates the best possible customer service through their products range, selection, and variety available.

For any further information or to contact AJ Products UK Ltd, please get in contact using the details below or feel free to visit the website.

Contact  
T +44 (0)1252 359760  
[www.ajproducts.co.uk](http://www.ajproducts.co.uk)





# APC Architectural Mouldings – Specialists in glass reinforced plastics



APC Mouldings represents the very pinnacle of great customer service, it's an aspect of the business all members of the team are both involved in and are very proud of. Gaining a reputation as purveyors of excellent customer service shouldn't be taken lightly, it is no small task. Reputation, experience and knowledge are traits of

a business which have to be hard fought and won. For this, APC Mouldings can be proud.

T 01482 783631  
F 01482 783292  
sales@apcmouldings.co.uk  
www.apcmouldings.co.uk



Based on the River Humber, Kingston upon Hull, in the beautiful East Riding of Yorkshire is Associated Plastic Components (APC) Mouldings. Manufacturing from their modern 30,000 square foot factory, and complemented by an additional 10,000 square foot of distribution area APC Mouldings are able to deliver a friendly and professional services to customers no matter how small or large the order may be. Many standard products are held in stock ready for immediate next day delivery across the UK.

Founded in 1993 by Managing Director Ron Beecroft, APC Mouldings has moved from strength to strength since its inception, steadily and continuously enhancing its reputation throughout the 26 years of continuous manufacturing. This is in no small part due to the core philosophy held at the company, an ethos by which to conduct business on a day-to-day basis: to do right by the customer by providing the best quality products at the most competitive pricing. It is by sticking to this simple but effective ethos that APC Mouldings has established itself as an industry leader in its Building sector.

What makes APC Mouldings so unique is its truly varied range of building products, with the company offering the following: moulded roofs for porch and bay windows, many designs of over door canopies, door surrounds and portico tops, GRP prefabricated chimney stacks – which have proven very popular on new build sites alongside our bespoke insulated dormer module. These products have been thoroughly tested by the CGFMA, receiving excellent results that comply with NHBC requirements. The list goes on much, much further; with APC Mouldings' staff capable of producing bespoke, fully customised mouldings to customer's own specifications.

You may be thinking: what exactly is GRP? Well, GRP is short for glass reinforced plastic; a material which can be formed from a mould to create any size or shape required. Further, the material can be finished in several styles: woodgrain, textured, smooth, shiny or dull, and it can even be made to look like stone. GRP is used to make boats, planes, trains and even wind turbine blades, too! Anything that is outside and subject to all weathers is often GRP because it requires little to no maintenance.

APC Moulding's products are built to stand the test of time, with all products coming with a 10 year manufacturer warranty. APC Mouldings' tagline speaks for itself: 'When Reliability Matters'. APC use only the highest quality, rigorously tested materials in their manufacturing process. As such, APC's gelcoats are UV stable and highly resistant to fading, ensuring problems like the discolouration of products is eradicated. With innovative new products constantly under development, manufactured using the latest technology, the future of APC Mouldings certainly remains bright.

The company's client base extends to include a wide range of customers from many different industry sectors. The company's main focus is on extending its custom to national home builders, double glazing trade counters, local authorities and individual companies.



## ...when reliability matters



Established in 1993, Associated Plastic Components Ltd are market leading specialists in glass reinforced plastics and architectural mouldings. We manufacture a range of architectural products such as bow canopies, over door canopies and porticos with plain or fluted columns.

We also manufacture CGMA approved dormer roof modules, bespoke Conservatory and porch roofs along with many of our own customers design requirements from our new 30,000 sq. ft. purpose built factory in Hull.

We have full ISO 9001 Quality Assurance accreditation, and all our building products carry a full 10 year guarantee against manufacturing defects. We supply to major building & double glazing companies, local councils, independent contractors, and members of the public.

For any further information, a brochure pack or to discuss your specific needs please contact the sales department.

### Why Choose Us?

- ✓ Largest range of architectural building products in the UK
- ✓ Next day UK delivery available
- ✓ Bespoke products manufactured on your requirements
- ✓ Fast manufacture and delivery services
- ✓ Maintenance free products – only occasional cleans needed
- ✓ ISO 9001 quality assured systems with full barcode traceability
- ✓ 10 year manufacturer guarantee
- ✓ Where reliability matters, think APC.



Please visit us at [www.apcmouldings.co.uk](http://www.apcmouldings.co.uk)

☎ 01482 783 631 | ✉ sales@apcmouldings.co.uk





## Celebrations with a lot of heart

We're all celebrating smashing the TCFM £5K challenge, after just 51/2 months of the charity partnership going live.

This has been achieved through a number of activities, but most notably bagging up unwanted toys, clothes, CDs, books, DVDs and a whole host of other household items that are then sold in the BHF charity shops across the country.

Everyone has tried to get on board to help our charity partner, the British Heart Foundation. They conduct ground-breaking research in to heart and circulatory diseases and their causes.

The remainder of the year will see colleagues at TCFM continue with the BHF's Bag it! Beat It! campaign along with other activities that are being planned on a more local basis.

BHF were selected by TCFM as a way of providing more



than just their specialist services to the charity's network of Furniture and Electrical stores where we professionally clean every item of donated soft furnishing.

**Contact**  
T +44 (0)1737 814016  
info@tcfm.co.uk  
www.tcfm.co.uk

## TC Specialist Services bringing an extra sparkle to Poundland stores across the country

TC Facilities Management (TCFM) have secured the contract to deliver window and external signage cleaning across the country.

The contract being delivered by a team from TC Specialist Services, part of TC Facilities Management (TCFM), started last month. It provides window cleaning services to every Poundland store, 4 DCs and their admin offices in the UK along with each Dealz store in the Republic of Ireland.

The team from TC Specialist Services are ensuring that the standards of appearance to the windows and external signage of each site will help to create a welcoming, fresh and engaging environment for Poundland's customers and suppliers.

The contract utilises innovative software which will help to deliver robust scheduling, monitoring and management reporting to Poundland.

Eric Dawson, Business Manager, TC Specialist Services said, "Having previously provided services to about half of Poundland sites, we are delighted



to now be providing our services to their complete portfolio. This award of contract has been as a result of us building relationships over a 5-year period that demonstrate our efficient and proactive response to Poundland's needs, particularly by our helpdesk, led by Abby Tordoff."

**Contact**  
T +44 (0)1737 814016  
info@tcfm.co.uk  
www.tcfm.co.uk

## Quality audits score a clean sweep



Following a rigorous 2-day assessment, TC Facilities Management (TCFM) has successfully passed three external management systems audits including the new ISO 45001:2018 standard. This and the other new 2015 versions for ISO 9001 and the Environmental audit ISO 14001 were all passed without any non-conformities or observations, emphasising the commitment of TCFM's senior management to these standards.

The audit took place over two consecutive days and included a comprehensive review of company policies and processes. This was to assess TCFM's approach to the quality (ISO 9001) and safety (ISO 45001:2018) they provide to their customers and colleagues, as well as the measures they take to minimise TCFM's

environmental impact (ISO 14001) from their operations. The new ISO 45001:2018 is believed could help, on a global level, save more lives, reduce accidents further and improve employee morale. Organisations have until March 2021 to make the transition to the new standard that came in 2018, replacing the BS OHAS 18001:2007. TCFM's achievement in making the transition to the new standards is testament to the work of TCFM's compliance manager Richard Grahnam who championed the transition. It also emphasises the senior management's commitment to these standards.

Brian Mold, TCFM's QHSE Manager said, "The successful transition to the new standard along with the renewal of the established standards clearly demonstrates TCFM's commitment to quality and safety in all that we do and is a tremendous reassurance to our customers that TCFM remains a business you can trust and a huge accolade to all our staff and their hard work."

**T +44 (0)1737 814016**  
info@tcfm.co.uk  
www.tcfm.co.uk

## Prestigious CSR Award

TC Facilities Management, who provide a range of FM services to some of the UK's most recognisable companies and Remploy, the disability employment specialist, have won the Partners in CSR (Charitable and Social Enterprise) category at the highly respected Premises and Facilities Management award 2017.

The PFM awards recognise exceptional practice to the facilities management sector. The ceremony in London was hosted by BBC Presenter Jeremy Vine and attended by more than 600 people.

The judges of the PFM awards 2017 said, "TC Facilities Management and Remploy were successful in this entry because we found they



had formed a bond that had developed into a strong partnership. It is one that provides a shining example and shows the very best attributes of the FM sector."

**Contact**  
T +44 (0)1737 814016  
sales@tcfm.co.uk  
www.tcfm.co.uk

## Expertise and initiative foil intruder attempt in Milton Keynes

A huge 'Thank You' was given to Pakeer Uwais, Security Officer at TC Security Services by their Operations Director Satia Rai for his quick actions last month, here was his response:

"I would like to thank your Security Officer for his excellent work on Saturday when two intruders tried to gain access to the roof using the top of the multi-storey car park. He vigilantly monitored the CCTV camera, followed them, phoned the police and handled the situation effectively. Thank you very much and this is appreciated by us wholeheartedly."

**T +44 (0)1737 814016**  
info@tcfm.co.uk  
www.tcfm.co.uk



## A hat trick that our clients will tell you is well deserved



TC Security Services, part of TC Facilities Management (TCFM), have not only been placed in the top 2% of all SIA listed companies within the Approved Contractor Scheme in the UK, they have also passed the ISO 9001 and 14001 management systems audits which came in to force last year.

The 4-day visit by both auditors involved full scrutiny of the TC Security Services operation and for the ACS audit included visiting both the Head Quarters and satellite offices along with a mix of varied customers.

The maximum overall score on the ACS audit that can be achieved is currently 175 points. TC Security Services' score of 164 places them not only in the top 2% of all SIA listed companies within the Approved Contractor Scheme, it also showed an increase in the score awarded by the auditors in 2017. All this shows TC Security Services as one of the very best security companies in the entire country.

Coupled with this was passing the ISO 9001:2015 and 14001:2015 management systems audits. This was the fourth time these new quality standards came in to effect September 14th last year which have been audited and passed each time.

**Contact**  
T +44 (0)1737 814016  
info@tcfm.co.uk  
www.tcfm.co.uk

## TCFM contract at Eden Walk, Kingston



TC Facilities Management (TCFM) is now delivering Cleaning and Security Services at Eden Walk in Kingston, part of the Regional multi-let retail portfolio managed by Broadgate Estates and owned by British Land and USS. This new contract commenced on April 1st and will help enable the 10 million visitors that go to Eden Walk each year to have a safe and enjoyable shopping experience.

The team from TCFM, led by Andy Farley, TCFM Contract Manager, will ensure that the extensive cleaning & security expertise along with the standards

that TCFM are renowned for in other Retail and Office sites are replicated, and with it will enable Eden Walk to provide visitors with an outstanding place to visit.

The contract will utilise smart management systems and state-of-the-art technology to help maintain and improve standards along with delivering robust monitoring and management reporting to Broadgate Estates, all with the aim of delivering unrivalled customer service and value.

Having been able to demonstrate added value within other cleaning & security contracts, the contract was awarded based on TCFM's proven track record spanning almost 55 years, along with their design of a bespoke solution, built on Broadgate Estates' individual needs.

**T +44 (0)1737 814016**  
info@tcfm.co.uk  
www.tcfm.co.uk

## TC Security Services awarded 100% Achilles Audit

Following a rigorous 2-day assessment, TC Facilities Management (TCFM) has once again successfully completed their "Achilles" annual audit for the fourth consecutive year.

The audit saw a score of 100% being awarded in all four key areas that the audit measures: Corporate Social Responsibility, health and safety, environment, and quality.

This 100% achievement validates TCFM's operational capability, competence and compliance.

The two-day visit included an audit of both head office and a client site.

The auditor was particularly impressed by

▲ The breadth of documentation to evidence the quality management systems in place

- ▲ The ongoing commitment to our duty of care of our colleagues by investing in innovative technology.
- ▲ The design and navigation of the training matrix in use
- ▲ The use of the site visit report which captures the four key areas that the audit measures.
- ▲ Our down-to-earth approach, doing what we say we do in a straightforward and uncomplicated way.

At the site audit, the auditor commented about the appearance, attitude and knowledge of security officers to ensure the job they do is done to the very best of their ability.

On receiving the news of the audit score, Richard Grahnam, Group Compliance Manager said, "I am delighted in this result. In achieving 100% for the second year in row, we



have been able to demonstrate that our team is committed to consistently delivering first class service to our customers. Something which gives businesses, partnered with Achilles UVDB community, confidence that we can deliver what they need."

This accreditation follows the recent news that TCFM achieved a clean sweep in passing three external management systems audits including the new ISO 45001:2018 standard.

**T +44 (0)1737 814016**  
sales@tcfm.co.uk  
www.tcfm.co.uk



# Bringing the tastes of Italy straight to your garden

Pizza Oven Supplies is managed by husband and wife team Nick and Sam Riley. With 25 years' experience in the building trade, Nick began making wood burning ovens five years ago, before creating the business a year later.

He decided he wanted to learn how to make these ovens and began researching the best materials and methods to do so. Nick eventually discovered that Stoke-on-Trent, where the company is based, had been building bottle kilns for years, and a wood burning oven is a type of bottle kiln. After experimenting with different mixes, he managed to build a successful oven and decided to create a mould for his finished design. This led to him developing a website, and he began travelling up and down the country building wood burning ovens for various customers.

As the business grew, he decided to put all his knowledge into creating kits for people to build the ovens themselves, or have them built by someone with more experience. These kits come with pre-cut bricks, along with drawings and in depth instructions to help designers, builders and DIYers. As well as the kits, Nick offers expert advice every step of the way, so customers can be confident that they will be happy with the finished product.



We spoke to Nick about his unique services and products: "The kits we sell contain all of the materials, instructions and drawings you need in order to build your own wood burning oven. All of our materials are recycled from the pottery industry, which keeps costs down whilst still using high quality refractory

materials. Furthermore, all of our ovens are 100mm thick, which creates a more substantial oven and therefore more value for money."

Their most popular oven is the Milan 750, an ideal domestic oven which can still be used in commercial projects. This easily cooks two 10 inch pizzas at a time, and the user can build their own design around it. Pizza Oven Supplies will soon be releasing the Tuscan 650, which is designed to be built and be ready for use on the same day.

Pizza Oven Supplies have recently opened a showroom and moved into a larger factory. This means they can boost their output to keep up with the ever increasing demand for their oven kits. They are constantly developing new ovens and designs, and creating new moulds in order to reduce production time yet maintain the high quality of their products. For more information, head to their website, or use the contact details below.

T +44 (0)1782 212777  
[info@pizzaovensupplies.co.uk](mailto:info@pizzaovensupplies.co.uk)  
[www.pizzaovensupplies.co.uk](http://www.pizzaovensupplies.co.uk)

## Halo 80 Plus blast protecting litter bin

Energetics Technology Ltd are experts in the design and manufacture of blast protection systems. Our blast protecting litter bins complement protective street furniture and help to enhance, and protect, our shared spaces. Located in mixed use spaces, commercial areas and transport hubs our litter bins have home office accreditation for the mitigation of explosive threats. The merging of public / private spaces requires increased security and counter terror capability. Energetics Technology's products provide this capability whilst remaining practical, easy to use and simple to install.



Traditionally it has been a requirement to permanently fix the bin to the ground to provide stability, should an explosive event occur in the bin. However, a recent addition

to the product range, the Halo 80 Plus, is not required to be fixed to the ground. Its novel design ensures the bin remains upright whilst subjected to the effects of a blast. This allows the Halo 80 plus to be sited in internal locations such as shopping malls, arenas and airports. It also means that the bin is portable and can be re-sited should threat points change.

Used throughout the world in key infrastructure projects, Energetics Technology's blast protecting litter bins are part of a range of products that include threat isolation units, blast mitigation units, explosives transport containers and explosive storage and packaging solutions.

If you require more details of the blast protecting litter bins, or wish to discuss your project with the team please contact the team at [enquiries@energetics-technology.com](mailto:enquiries@energetics-technology.com), call us on 01283 732339 or visit our website at [www.energetics-technology.com](http://www.energetics-technology.com)

## TIMBER GARDEN BUILDINGS

GARDEN OFFICES  
 TIMBER GARAGES  
 WORKROOMS



WARWICK BUILDINGS  
 NIGHTINGALE LANE  
 LONG ITCHINGTON  
 SOUTHAM  
 CV47 9QL  
 01926 815757

[www.warwickbuildings.co.uk](http://www.warwickbuildings.co.uk)

## Perfect paths

Whether you are looking for parking space, landscaped pathways or a picture-perfect patio, ResinDrives.co.uk are the ideal choice – providing a beautiful, quick-drying, safer resin bound alternative that is more efficient than tarmac, concrete, gravel and block paving. It offers:



### A Porous Service

The resin bound material naturally drains water just as nature intended. This means a puddle-free surface with a reduced risk of flooding. It also means rain water and essential nutrients can reach plant roots that may be growing in the surrounding area.

### Environmentally Friendly

Resin is up to 10 times more eco-friendly than concrete. Plus, all Resin Drives' paths and patios are made up of natural stone, using 100% organic resin.

### Long-lasting Durability

Triple layered for superior strength, not only is resin more aesthetically appealing, it is stronger and more durable than other surface options. It is less likely to crack, and resists weed growth for a long-lasting, beautiful finish.

### Safety

Resin bound surfacing can be laid to make it wheelchair and pushchair friendly and has a natural friction that makes it safer and more slip resistant.

[Resindrivetrade.co.uk](http://Resindrivetrade.co.uk) offers two UK pickup points and an online ordering service for all your resin products. Alternatively, call 0800 007 5733 for an installation quote from our commercial team today.

## Experts in Blast Protection



Blast Resistant Litter Bins



Threat Mitigating Systems



Detonator Containment Units



**ENERGETICS**  
 Technology Ltd

[enquiries@energetics-technology.com](mailto:enquiries@energetics-technology.com)  
 +44 (0)1283 732 339

manufacturing blast protection systems for civil and defence applications

- airports
- train stations
- EOD teams
- stadiums
- laboratories

[www.energetics-technology.com](http://www.energetics-technology.com)



## Wonderwall: Modern planters for indoor or outdoor use

Wonderwall are one of the UK's leading producers of unique decorative garden products, comprised of a skilled team of passionate designers. They are most renowned for their planters, for use indoors and outdoors, and which can be used to create an array of stunning designs. Each planter is easy to use and resilient to all weather types in light of the planters' durable and weather proof material. Wonderwall's ground-breaking design has allowed gardeners to bring life back into a drab urban space, transforming the bleak into the beautiful.

The planters not only look stunning, but are also unrivalled in their design, providing a self-



watering function that enables gardeners to maintain large displays with little upkeep. This allows them to focus their attention on the look of the wall, bringing their imaginations to life and creating their own masterpieces.

The company have truly revolutionised the simplicity of producing a fantastic, potted wall that brings the wonder of nature into any modern space. So if you would like to get your hands on one of Wonderwall's vertical planters, take a trip to your nearest garden centre. For any further enquiries, or if you would like to get in contact with Wonderwall, feel free to telephone them on the number right.



**Contact**  
 T +44 (0)161 643 5742  
[sales@uspcreations.com](mailto:sales@uspcreations.com)  
[www.wonderwall.direct](http://www.wonderwall.direct)



**S.D. Samuels** is widely acknowledged to be one of the UK's leading **Cladding & Rainscreen Specialists**, offering experience and expertise in **Design & Build projects**.

We are a Category 'A' Supply Chain Member to many of the leading contractors in the Country -Vinci, Willmott Dixon, I.S.G., Balfour Beatty to name but a few. We are able to offer a complete envelope package in Roofing, Cladding, Rainscreen, Glazing, Guttering, etc. We have a vast knowledge and expertise in a wide range of Flat Roofing products as well as all types of Cladding & Rainscreen.

Our Growth has been founded on a sustained commitment to core values -technical know-how, commercial integrity, installation excellence and client service. We are aware of our obligations as a contractor and that's why we aim for optimum performance every time-completing jobs as specified on or ahead of programme.

**Quality is at the heart of what we do.**



0870 112 9320/0870 112 9330 • [enquiry@sdsamuels.co.uk](mailto:enquiry@sdsamuels.co.uk) • [www.sdsamuels.co.uk](http://www.sdsamuels.co.uk)

## If you like wildflower meadows, you're going to love Pictorial Meadows



Pictorial Meadows, the award-winning market-leader in the design, supply and installation of stunning designer meadows and naturalistic landscapes, have recently announced their new meadow mixes for 2019.

With a reputation for innovation and quality, built over the last 20 years working on projects for Local Authorities, housing developers, visitor attractions and many others, it's no surprise that the new meadow mixes are already proving popular.

The new 'Dragonfly' annual meadow mix, inspired by its iridescent namesake, offers an unusual combination of purples and yellows with orange and ivory tones. The delicious sounding 'Marshmallow' annual meadow mix meanwhile is a dreamy combination of delicate pinks and white.

Jonathan Wild, Commercial Director, says, "We know that people look to grow meadows not just to benefit wildlife, but also for the stunning visual impact they can have – particularly in urban settings such as roadsides and around new buildings. With these new mixes, we are offering our widest range of designer meadows ever, allowing our customers to choose the perfect meadow for their project."

**In addition to a fantastic range of seed mixes and PM Turf, Pictorial Meadows also offers design and consultation services, bespoke meadow mixes, and a trade discount. You can order a brochure and view their range at: [www.pictorialmeadows.co.uk](http://www.pictorialmeadows.co.uk) or give them a ring on: +44 (0)1142 677635.**

**If you like wildflower meadows,  
you're going to love Pictorial Meadows.**

Superior quality designer meadows from seed and pre-grown turf based on 20 years of research and development

- Improved biodiversity
- Longer, successional flowering
- Species rich
- Dense, layered colours

Pictorial Meadows

Meadow seed and turf supply  
 Design and consultation  
 Training and CPD  
 Meadow installation

01142 677 635  
[PictorialMeadows.co.uk](http://PictorialMeadows.co.uk)



## Hauraton drainage systems at Bonus Arena - Hull Venue



Built on brown-field land located on the edge of the main shopping district in Hull and adjacent to Princes Quay, the Bonus Arena – Hull Venue and its associated multi storey car park were opened in August 2018. The £36 million development progresses the legacy of the social and economic impact generated by Hull's 2017 UK City of Culture status.

The Arena, designed by AFL Architects, is a state-of-the-art music and events complex with a flexible capacity of up to 3,500 people. The facility can provide a venue for concerts or corporate conferences in an 800 seat auditorium. A 2,000m<sup>2</sup> adaptable space can be utilised for sporting events or exhibitions and trade shows.

Surrounding the Bonus Arena is a public realm laid with grey stone paving and landscaped by re-form Landscape Architecture Limited with trees, lawns, flowerbeds and permanent stone seating.

An effective surface water drainage system was essential to ensure all weather access to the venue. 140 metres of Hauraton RECYFIX® PRO 100 channels with FIBRETEC® heel-safe gratings were chosen for the job which blended well with the stone paving and would resist damage from applied grit rock salt in freezing weather.

The material, PA-GF used to make the FIBRETEC® grating, was especially developed by Hauraton; the tough, UV resistant, fibre reinforced moulding offers high stability and huge strength for its weight. Complying with loading category Class C250 (BSEN 1433) the grating can easily take the weight of commercial delivery vehicles. The design is a real innovation as its non-corrosive material provides a visually appealing surface finish that retains its colour. The slots are super smooth, elliptical openings with the moulded bars having slightly raised triangular bosses along their outside edges. As well as providing an elegant appearance, the feature ensures surface water is directed into the slots.

The RECYFIX® channel component is made from 100% recycled PP. The PRO 100 model is factory fitted with the FIBRETEC® grating and only weighs 4.6kg, so the unit was easy to handle and quickly installed on site.

For more product information go to [www.hauraton.com](http://www.hauraton.com)

For other Case Studies go to [www.drainage-projects.co.uk](http://www.drainage-projects.co.uk)



## Dimplex updates designer electric panel heaters

Dimplex has upgraded its Girona, Monterey and Saletto ranges of designer panel heaters to meet the EU's new Lot 20 energy efficiency standard for 'fixed' heating products.

Modernising existing Dimplex models, the new ranges all include energy saving technologies such as an accurate electronic thermostat (+/-0.2°C) providing improved temperature control. Combined with a low thermal inertia which enables the panels to heat up more quickly, the Girona, Monterey and Saletto ranges are able to more accurately match and



maintain a chosen room temperature. The new ranges also incorporate integral 7-day timer, open window detection and adaptive-start functionality. These added features form part of the manufacturer's commitment to ensure all three ranges are compliant with the new Lot 20 legislation. In addition, the panel heaters have also been redesigned with clear, simple to navigate, yet advanced controls using touch-sensitive technology with optional audio feedback, complemented by an RGB backlit graphical display. Users will also benefit from standard timer modes (User Timer, Out All Day, Home All Day, Holiday) and continuous

heat modes which include Manual, Frost Protect and Eco settings. The Dimplex panel heater range maintains its stylish design choices, including an elegant, black or white glass front design on the Girona, while the Monterey range consists of a stylish finned metal structure. Both models will cover most traditional panel heater fixing marks. The Saletto series includes a striking low profile appearance that is perfect for low walls found below bedroom windows in or in a conservatory.

T +44 (0)344 879 3587  
[www.dimplex.co.uk](http://www.dimplex.co.uk)

## Landscape & Amenities News



## Wonderwall commercial is literally growing upwards!

Wonderwall was introduced to the 'commercial living wall' sector in February this year. Since then the company has experienced rapid growth. Dave Fitton along with Wonderwall designer Rick McKeever are Wonderwall commercial. Dave, an established landscaper has worked in the living wall sector for over 12 years. Dave explains why Wonderwall is far superior to other options available:

"Wonderwall is instant, it doesn't need to be planted 2 or 3 months in advance, the individual pockets within the module are large enough to accommodate established plants. You'll never be looking at a wall full of plastic or fabric with some foliage peeping through."



The self-watering system is seamless – once the planters are interlocked, a simple drip irrigation system is installed. Regardless of the height of the vertical wall, each Wonderwall module will receive the correct amount of water with little or no waste. Furthermore, you don't need a complicated cage system or intricate rear fixing system, this means the installation time is reduced considerably compared to other systems.

Wonderwall has just successfully completed 300m<sup>2</sup> vertical green wall at Chester Racecourse. The wall consisted of sections both externally and internally, with the entire installation taking only two weeks to complete.



Contact:  0161 643 6742  [rick@wonderwall-it.co.uk](mailto:rick@wonderwall-it.co.uk)



## Intratone opens all the right doors

Intratone is one of Europe's largest access controls specialists and manufactures a range of cost-effective door-entry and access control solutions designed around the customer need.

Its systems are installed across a range of Housing Association, Social Housing and Private Properties throughout the UK and Europe. Intratone was among the first in the industry to launch the first 100% video intercom solution for smartphones and tablets and launched a dedicated range of products for the UK market in 2016.

Intratone technology uses the mobile phone

network so residents use their own phone (landline or mobile or tablet) to open the door for visitors. Thanks to remote, real-time technology, managers can connect directly via its management platform to manage information – they can create, modify or remove a name or badge without having to go on site.

The Intratone portfolio of products includes the complete solution for door entry and access control from intercoms and coded keypads, to proximity readers and RF receivers, to key fobs and transmitters, to key management systems and digital noticeboards.



David Bell has recently been appointed UK Country Manager to head up the sales team and oversee the opening of its UK head office.

T +44 (0)208 8497497  
www.intratone.uk.com



**Intratone  
opens all  
the right doors**

At Intratone we provide the complete all-in-one door entry solution – from the door entry panels to proximity readers and HF receivers, all the way down to our colourful key fobs. Our systems can be remotely managed from our cloud-based management portal, making life much easier for residents and facilities managers alike.

To find out more go to [intratone.uk.com](http://intratone.uk.com)



## All Good in the Wood offer beautifully bespoke, sustainable carpentry



ALL GOOD IN THE WOOD

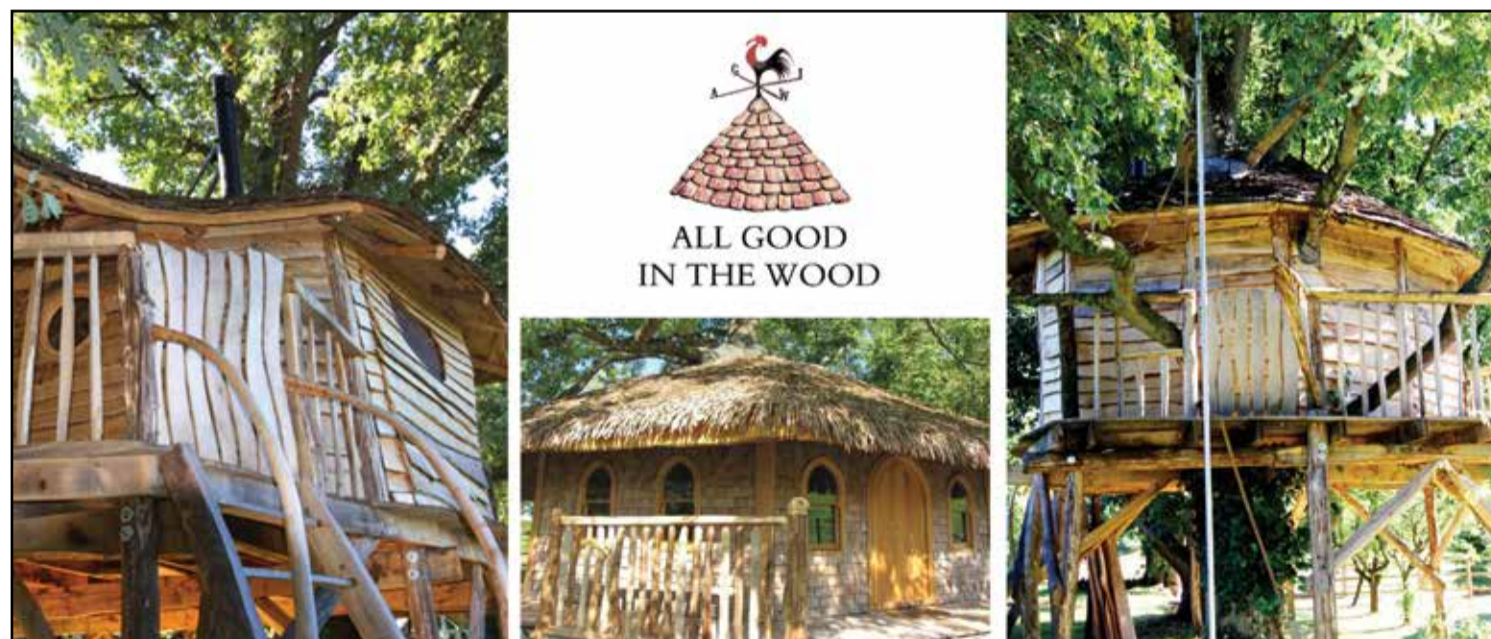
All Good in the Wood – established in 2012 and based in Gloucestershire – are the carpenters specialising in the manufacture of traditional hand-clefted wooden shingles, furniture, and wonderfully unique treehouses and other similar wooden structures such as yurts and glamping solutions.

Further, All Good in the Wood offer cladding, fencing, sleepers, timber, log sheds, and firewood. If there's something you'd like beautifully crafted out of the finest sustainable wood, there's a chance Eon at All Good in the Wood will be able to do it.

Only recently Eon and the team at All Good in the Wood have completed a mammoth project, manufacturing and supplying tens of thousands of hand-clefted wooden shingles to an historic church in the local area.

Aside from the quality and variety of products offered, what truly makes All Good in the Wood stand out from the crowd is their continued emphasis on being an ethical and responsible company. Using only sustainable wood from FSC managed forests ensures that natural resources are not exhausted, while using only wood from the local area of Gloucestershire and the surrounding areas ensures that the specialist's carbon footprint is as low as is possible by avoiding pollution caused by shipping.

Contact  
M 07851 931261  
[info@allgoodinthewood.co.uk](mailto:info@allgoodinthewood.co.uk)  
[www.allgoodinthewood.co.uk](http://www.allgoodinthewood.co.uk)



ALL GOOD  
IN THE WOOD

**Sustainable Hardwood Timber, all from the U.K**

Oak and Sweet Chestnut Shingles

Milled Battens, Beams, Joists and Round Timbers

Tree Houses, Summer Houses, Glamping, Camper van Conversions

**Design and Build it yourself or let us do it for you.**



[f allgoodinthewood](https://www.facebook.com/allgoodinthewood) | [www.allgoodinthewood.co.uk](http://www.allgoodinthewood.co.uk) | [info@allgoodinthewood.co.uk](mailto:info@allgoodinthewood.co.uk) | 07851 931 261



## Thermostats, water boiler, dryer & heating spares



UK Spares has 25 years of expertise in distributing genuine manufacturers spare parts to the electrical trade. We are of the prime suppliers of spares within our main area of expertise which is electric water heating and electric space heating. We are part of UK Electric Ltd and have a range of sister companies involved in a diverse range of activities associated with electrical, electronic, mechanical, lighting and controls.



We are always happy to try and assist with unusual requests for spare parts that you are unable to find elsewhere. With replacement part prices starting from just a couple of pounds, UK Spares stocks a range of genuine spare parts from brands such as Creda, Dimplex, Instanta, Whirlpool and Zip. UK Spares removes the need to replace a complete unit for the sake of a lost control knob, faulty element or broken tap handle.

We use the latest data specs, up-to-date information and extensive product knowledge teamed with our years of knowledge and expertise in order to identify the correct spare part for each individual request.

With over 2,000 product lines in stock and thousands of others available to order UK Spares can quickly source even the most obscure spares from its extensive network of suppliers.

T +44 (0)1454 620500  
[www.uk-spares.com](http://www.uk-spares.com)



## Safer heating for SEN school

Safe surface temperature specialists, Contour, have recently completed a project with Walton Hall Academy to provide LST safety radiator guards to the school that will protect students from burns and reduce the risk of injuries around their radiators.

Walton Hall is a special educational needs school in Staffordshire. Their previous radiator covers needed to be replaced to allow staff easier access for cleaning and maintenance as students were often pushing small items

through the grilles.

With close consultation to their needs, Contour provided 19 DeepClean LST radiator covers with radius edges and bullnose corners, which eliminated the risk of children injuring themselves on sharp edges. The DeepClean design also features pencil proof grilles, which addressed another one of the schools problems.

To read more on this case study visit the Contour website at: <https://bit.ly/2lADh9f>



Contact  
 T +44 (0)1952 290498  
[www.contourheating.co.uk](http://www.contourheating.co.uk)



NEW

# The one to fit where others don't

- Super compact, space saving filter
- Developed to provide effective magnetic filtration in the tightest of installation spaces
- Filter can be switched to bypass when servicing
- 115mm total space required



2 minute installation



Bypass 180 degree



Vertical and horizontal installation



Fits in the tightest of spaces



Space saving for simple servicing



## MagnaClean™

Atom

To find out more head to  
[adey.com/atom](http://adey.com/atom)  
 or call 01242 546717



# Showering: 'At the push of a button' from Hudson Reed

Hudson Reed, one of the UK's leading bathroom specialists has launched a stunning range of precision engineered 'Push-Button' showers called 'Ignite.' The

new range of intuitive shower valves are the ultimate in bathroom style and technology allowing complete controllability – 'at the push of a button.'

Functions such as start/stop activation, on/off flow controls and, depending on model – single, twin or triple valve, the ability to direct flows from dedicated outlets such as

Hudson Reed  
*Beautiful* **MADE EASY**

## RADIATE STYLE

Bathroom products specialist Hudson Reed has launched a new range of glass infrared heaters that are not only stylish and simple to install but are extremely energy efficient consuming typically 30% less energy than conventional radiators.

The new infrared radiators offer the latest in modern space heating, and are ideal for use anywhere in the home, including bathroom, bedroom, kitchen and lounge, as well as commercial environments too.

The infrared heaters combine innovation and state-of-the-art technology to provide many consumer benefits such as silent running, high efficiency (A+ ERP Rating) and a range of ultra-modern minimalist on-trend designs as well as having no moving parts, are maintenance-free and reduced CO<sub>2</sub> emissions.

Launched in three panel sizes for glass, 450, 600 and 900 watts and two colours, black or white. The use of reinforced tempered glass with easy wipe-clean maintenance not only delivers designer-inspired looks and elegance but ensures safety and peace of mind in operation.



overhead shower, body jets, and the hand-held shower.

Available in both round and square-button chrome options, the showers are a slimline design with all controls hidden behind the almost flush-mounted concealing plate and are built around the innovative in-house, UK manufactured, Valquest shower valve for thermostatic control and safety, performance and durability.

The shower valves work from as low as 1-bar water pressure and concealed installation maximises space for small or compact bathrooms. A wide selection of shower kits and accessories are also available from Hudson Reed to fully coordinate with the new push-button valves.

As featured on the front cover of the new Hudson Reed consumer bathroom brochure, out now, the new push-button showers complement Hudson Reed's comprehensive bathroom collection of ceramics, furniture, baths, enclosures, showers, brassware, heating and mirrors.

**For more information about the range or to request a brochure please contact us for further information on telephone: +44 (0)1422 417100 or visit the website: [www.hudsonreed.co.uk](http://www.hudsonreed.co.uk)**



For further information, contact Hudson Reed on **01422 417110** or **[www.hudsonreed.co.uk](http://www.hudsonreed.co.uk)**



## Washroom accessories

Dudley Industries' Platinum washroom dispenser range promises to enhance any commercial washroom. Made to the highest standard from quality stainless steel the Platinum range is one of the most comprehensive washroom ranges available. Finished with an innovative lacquer that helps to prevent unsightly fingerprint marks it ensures that the dispensers stay looking clean and hygienic whilst being easy to clean.

Stainless steel provides a robust construction suitable for the busiest of washrooms whilst delivering sleek lines to complement the most stylish of decors. The Platinum range provides all the essentials including air freshener, toilet roll holders, soap dispensers,

paper towel dispensers and waste bins but also includes shower gel dispensers, toilet seat cleaners, roller towel cabinet and hand dryer ensuring there is the perfect mix of hygiene dispensers for all locations.

Designed and made in Lancashire by expert sheet metal engineers Dudley Industries who have been manufacturing quality metal washroom dispensers since 1942.

The Platinum collection is just one of the latest innovations from Dudley Industries. The company have also recently introduced dispensers designed specifically for the care sector. The Anti-ligature range

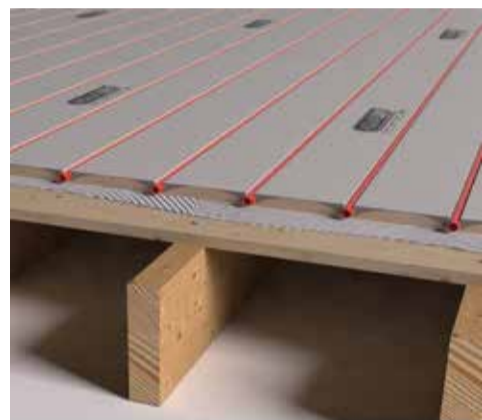
protects the most vulnerable through its considered design and attention to detail to help prevent ligatures being attached to cause self-harm. The Dementia range uses colour cues to help patients with Dementia.

A washroom can be a testing environment for those with Dementia but by installing easy to use, coloured dispensers the hand washing process becomes less challenging, helping to maintain the independence of users for as long as possible.

T +44 (0)1253 738311  
[sales@dudleyindustries.com](mailto:sales@dudleyindustries.com)  
[www.dudleyindustries.com](http://www.dudleyindustries.com)



## Floor Heating Systems



**VARME**  
 Floor Heating Systems  
 (0115) 983 4259

Floor Heating Systems products are sold throughout the world under our brand name Varme.

The Varme brand covers our comprehensive range of underfloor heating and associated products, from the traditional electric cable and mat kits, to our wide range of water based systems including the new state of the art low profile water based Aqualay system.

All of our products are manufactured to the highest quality and our customer service is second to none.

Why not give us a call on 01159834259 and put us to the test.

[sales@varme.co.uk](mailto:sales@varme.co.uk)

## Kitchen Carcase



Lamtek is the largest flat pack kitchen carcase only manufacturer in the UK. Established in 1989 we are a trade only supplier to national distributors, retailers, builder's merchants, property developers and independent kitchen fitters. A family run company that employs 90 people operates from a 60,000 square foot manufacturing facility in Nottinghamshire. We are a forward thinking organisation who recently acquired planning permission for an 18,000 square foot extension to our factory to allow for future growth.

In addition to our comprehensive range of flat pack kitchen carcasses, we also offer 3 drawer ranges as well as a selection of wirework and pullouts. Bespoke size carcasses are also available to suit the customer's needs as we appreciate custom sized doors are readily available in the current market. Our revolutionary "Rapidcab" flat pack kitchen carcase is proving a great success. Cams, pins and dowels are pre-inserted into components, which are then boxed in order of assembly enabling the fitter to build the carcase straight from the box. This makes our claim that a single base or wall unit can be assembled in two minutes easily achievable. All of this is achieved without comprising on the strength and rigidity of our carcase.

We operate a policy of renewing all our main line machinery within 7 years of installation. This ensures that the plant is always using the latest technologies, giving our customers the best machining quality available and eliminating any delays arising from machinery breakdown. Our cam, pin and dowel insertion machine was the first in the world to be commissioned, demonstrating our forward thinking approach to manufacturing technology

[www.lamtek.co.uk](http://www.lamtek.co.uk)

**VARME**  
 Floor Heating Systems  
**solutions for all floors**

- Exceptional Customer Service
- Full Technical Support Design and Installation Services
- Maintenance Free Heating

Tel: 0115 983 4259 Fax: 0115 963 2317 [www.varme.co.uk](http://www.varme.co.uk)

**DUDLEY INDUSTRIES**  
 SHEET METAL EXPERTISE SINCE 1942

**For the ultimate in Washroom Style**  
 Stylish dispensers designed and manufactured to the highest quality standard for all public washrooms.

Modulo - Behind the Mirror Range  
 Platinum Range  
 Recessed Range

Sales: +44 (0)1253 738 311  
 E-mail: [sales@dudleyindustries.com](mailto:sales@dudleyindustries.com)  
[www.dudleyindustries.com](http://www.dudleyindustries.com)

**WASHROOM ACCESSORIES**

**CDC**  
 cupboard door co.

We are a manufacturer of high quality Mdf bespoke in-frame + layon doors, accessories and carcasses.

All products are available in raw, primed, painted, hand painted & wood effect finish.

We can manufacturer to any design of your choosing, if you can think of it we can make it.

We have colour matching facilities on site, enabling us to match any colour of your choosing.

All doors are one piece and machined on the back to provide maximum stability and durability. This also gives are products that traditional feel of quality.

So get in contact today to find out what we can do for you.

We're a trade only manufacturer supplying to designers, showrooms, architects, joiners, fitters, online retailers etc.

Cupboarddoor.co.uk  
[sales@cupboarddor.co.uk](mailto:sales@cupboarddor.co.uk)  
 01323 899944

**CDC**  
 cupboard door co.



# TILCOR ROOFING SYSTEMS

New to the UK, but TILCOR ROOFING SYSTEMS are currently the fastest growing stone coated pressed metal tile company in the world. TILCOR ROOFING SYSTEMS are manufactured by the Ross Roof Group who has been involved in roofing production over 4 generations since 1942.

Installed in many countries, the TILCOR range offers exceptional strength and durability in the harshest of

climates. Watertight, fire and earthquake resistant, our pressed steel roofing tiles can withstand hurricane-force winds, torrential rain and hailstones.

Thanks to the use of the modular TILCOR Shake roofing sheet, which is characterised by lightness and flexibility, the below architectural forms could have been made impressively. Another argument for choosing the TILCOR roofing sheet is the durability of

a 50-year pro-rata warranty & a 40 year BBA. Means that unlike with alternative solutions you get a versatile roof made to last the test of time. The pure steel manufactured of the Iron Ore from the New Zealand beaches to the ZINCALUME® coating. Aluminium-zinc coating is about 2.5 times better in resistance compared to ordinary zinc alloy, so commonly used in Europe. ZINCALUME® is a guarantee of quality NEW ZEALAND STEEL LTD.



Before



After with new Tilcor Shake

## Engineering News



## Click Fix

## A quick look into RJW Engineering



The RJW Engineering Group was established in 1989, the company specialises in prototype manufacturing, working with stainless steel, mild steel, plastic and other associated materials, turning client's concepts into reality. With the motto of Engineering Excellence, the RJW Engineering group have even achieved a place in the Guinness book of records for the largest copper pipe fitting in the world.

**Pipe Cowl;** Saves up to 15 minutes on boiler installation, there is no fabrication and the product is the only NHBC and British Gas approved Pressure relief valve for boilers. Manufactured to the EN1254, this product is a quick, neat and simple solution for the pressure



relief termination. Other products include the **Click Fix**, promises to fix pipes without the need to 'cut' the pipework. Sealing holes in 15mm and 22mm pipes, just add flux to the click fix, clip over the hole and heat until a seal is made. The **Burst Alert** is an innovative product that provides automatic action to prevent leaks turning into flood; the moment the copper tape becomes wet a wireless signal is sent to the auto ball valve to switch off, then a text message is sent advising you there is a water leak but not to worry as the water has been turned off. The **Drain Early Warning System**, 'DEWS' is an advance warning system that alerts clients to rising and falling water levels, giving the occupant a chance to remove valuable items from their home or replenish water levels. The device has a built in SIM card that will automatically text a mobile phone or an in house unit that activates an alarm. Yet another safety measure product is the **Safety Stair Rods**, these prevent the risks of slips and trips on the stairs, fitting widths of 28"-40" the 14 spring rods hold sheeting to each individual stair. This product helps clients keep up to date with Government Health and Safety Legislations. Whilst there **Drain key** allows the safe lifting of man hole covers, this adjustable spring loaded key ensures the man hole cover stays attached preventing slips or chamber breaks.

These innovative products allow their client's an efficient and easy solution to all DIY and Construction issues by putting safety first.



Part of the  
RJW Engineering Group.

Tel +44 (0)1384 442852 – [www.rjwengineering.co](http://www.rjwengineering.co)  
[www.pipecowl.com](http://www.pipecowl.com) – [www.click-fix.co](http://www.click-fix.co) – [www.burstalert.co](http://www.burstalert.co)  
[www.drainkey.co](http://www.drainkey.co) – [www.dews.co](http://www.dews.co) – [www.ssrods.co.uk](http://www.ssrods.co.uk)

It's a common miss conception in the UK that these products are not versatile, as you can see from the photos they are more than versatile and can be installed on any roof type. In Europe the Buffalo eye dormer window type is very common, using our approved installers a perfect finish is achieved. Of course the product is lightweight so perfect for all construction types especially timber or prefabricated.

Driving our UK entity will be Darren Durrant-Rance the UK Sales Manager and Marek Skoczylas the European Sales Manager between them there is over 20 years' experience in the roofing industry.

TILCOR ROOFING SYSTEMS are suited to almost every building type, they are nearly 10 times faster to install than traditional tiling methods they are lightweight only 6.3 or 6.4kgs a m<sup>2</sup> (depending on the profile) meaning less strain on your roof. The natural raw materials mean the product will last as long as traditional tiles also but with the added bonus of minimal colour fading.

TILCOR ROOFING SYSTEMS are virtually maintenance free, this make them ideal for Councils & Housing Associations which will minimise countless repairs following bad weather conditions.

TILCOR ROOFING SYSTEMS are ideal for Schools, Modular housing, transforming a flat roof to a pitched roof, MOD buildings, non-traditional housing stock, vertical cladding, traditional housing stock and other roofing installations.

We pride ourselves on getting repeat business essentially due to:

- ▲ Our product quality
- ▲ Customer service
- ▲ BBA & LABC
- ▲ Installation inspections
- ▲ Full CAD & BIM
- ▲ Complete & timely specifications
- ▲ UK coverage of roofing contractors
- ▲ UK distribution network
- ▲ Quick lead times for product
- ▲ Class A fire rated.

The demand for the UK market is perfectly suited to Tilcor Roofing Systems, over the past few years the UK market has suffered delays waiting on more traditional products, these delays are time consuming and costly something Tilcor Roofing Systems are not affected by.

With the UK market growing and looking continuously at different designs to make them more efficient and environmentally friendly, that also with the huge push on modular housing, Tilcor have a tile solution to suit customer and planning requirements. The fact these tiles can be installed so much faster than more traditional methods make them ideal for every project. They reduce time on site for the roofers meaning the roof is watertight quicker, this allows the other trades to work quicker. All this make Tilcor a perfect roof solution for the UK market.

T 0064 9299 9498  
[info@tilcor.com](mailto:info@tilcor.com)  
[www.tilcor.com/en](http://www.tilcor.com/en)



## The ultimate outdoor cooking stove



For versatility and practicality, the award winning AquaForno II with extra features is a no brainer. The multi functionality and portability of this amazing outdoor cooking stove, means you can eat whatever you desire, wherever you are as well as keeping warm and having a hot drink from the ingenious internal water boiler – and all from one piece of equipment!

From homemade or readymade meals, the possibilities are endless. Great for social gatherings, camping trips or just for the garden, the food and outdoor enthusiast will revel in all the features of the AquaForno II giving another dimension to outdoor living.

- ▲ Portable
- ▲ Collapsible and space saving
- ▲ Multi-fuel – wood/charcoal/gas/pellets
- ▲ BBQ Grill
- ▲ Pizza Oven
- ▲ Rotisserie
- ▲ Smoker
- ▲ Internal water boiler for hot drinks on tap
- ▲ Easy to store out of season
- ▲ Patio heater and clothes dryer.

T +44 (0)1189 304977  
www.aquaforno.com

## Innovative and highly adaptable routing jig from Universal Engineering

Universal Engineering are proud to manufacture and supply the innovative LockMate, a precision engineering routing jig taking the engineering world by storm.

LockMate can be used with internal locks, external locks, and euro locks, allowing easy and efficient fitting. It can also be used for morticing, and its portable and flexible mechanism means it saves previous time when fitting locks compared with conventional methods. Accommodating doors ranging from thicknesses of 32mm to 65mm, it

is self-securing and self-centring thanks to two thumbscrews located at each end of the device. With a robust and adaptable design, LockMate is made from high grade aluminium and weighs about 4kg.

The device has a comprehensive website, which features step by step guides, video tutorials, and diagrams of the products' mechanism. In addition to this, the site features a wide array of customer testimonials, proving that LockMate is the key to providing fast and efficient lock fitting services.

## LockMate

What's more, the device can also be adapted to suit other locks by special request. If you would like to find out more information, head to their website or use the contact details below.

Contact  
T +44 (0)1628 524471  
sales@universalleng.com  
www.lockmate.co.uk

**The most versatile outdoor cooking stove around**

The most versatile outdoor cooking stove around. Portable, collapsible multi-fuel BBQ Grill, Pizza Oven, Rotisserie, Smoker and much more!

01189 304977  
www.aquaforno.com

## LockMate

~ Precision Engineering Routing Jig ~  
An innovative and highly adaptable routing jig for fitting mortice locks into doors

LockMate is designed to fit faceplate, lock, handle hole and keyhole all in the same setup.

It is portable, flexible and saves time when fitting locks compared to conventional methods.

LockMate will accommodate doors ranging from a thickness of 32mm to 65mm and is self-securing and self-centring by means of two thumbscrews located at each end. With a robust and adaptable design, LockMate is made from high grade aluminium and weighs about 4kg. LockMate may be adapted to suit other locks by special request.

Universal Engineering  
Unit 17, Soho Mills Industrial Estate,  
Wooburn Green, Bucks. HP10 0PF  
Tel: 01628 524471  
Email: sales@universalleng.com



Visit [www.lockmate.co.uk](http://www.lockmate.co.uk) to see the video!

## INVC



Do you need practical training in noise and vibration? Our IOSH courses can help organisations to minimise the risk of serious employee harm from exposure to loud environments or vibrating powered tools.

As a result of the obligations many businesses face, our training events are more than just noise assessment courses or HAVS testing courses – we will help you to understand full compliance, including control and management of risk as well as how to carry out the assessments yourself.

We also carry out the surveys should you prefer that option.

For more details: email: [contact@invc.co.uk](mailto:contact@invc.co.uk) or Call Gill Cussons 07837 385248

**INVC Noise & HAV Courses**  
New 2019 dates and venues available

- **Noise Risk Assessment and Management**  
4.5 days - IOSH certified  
This uniquely non-academic and pragmatic approach to CoNaWR 2005 is for anyone who needs to know how to assess and manage noise risk effectively.
- **HAV Risk Measurement and Management**  
2 days - IOSH certified  
Measure vibration accurately, assess risk and write management programmes meeting all the new HSE guidance requirements as cost effectively as possible.
- **Noise Measurement and Management**  
1 day - IOSH certified  
Introduction to best practice or a refresher for previous competency delegates. Ideal forum for questions re your noise assessment experiences. 2 CPD points.

All these IOSH certified courses have been developed and are run by the Industrial Noise & Vibration Centre.

*"...excellent, well grounded and humorous... real world illustrations & solutions were thought provoking... the best noise presentation I've ever been to..." Andy Phillips: HSL*

**All courses available for in-house delivery.**

For more information, course dates and venues, contact Gill Cussons: [gill.cussons@invc.co.uk](mailto:gill.cussons@invc.co.uk) 07837 385248  
[www.invc.com/training-section/training/](http://www.invc.com/training-section/training/)

**eco right**

**Lime Mortars & Plasters**

10,000 years of history developed for the future

- ✓ hydraulic lime mortars in 18 colours and 2 strengths
- ✓ ashlar mortars for fine joint pointing
- ✓ traditional fat lime mortars
- ✓ highest quality sustainable ingredients
- ✓ maximum flexibility and ease of use
- ✓ use on 1,000s of significant properties
- ✓ expert design and specification support

[www.ecoright.co.uk](http://www.ecoright.co.uk)  
0845 873 3888



## Specialists in construction services

GLW Engineering provides products such as staircases, handrails, Platform, Structural Steelwork, shot blasting, sand blasting and soda blasting..

Customer service is at the heart of the company which is why they offer many bespoke products and services. They are proud to say that they use 3D CAD design facilities and have experts in all areas of their work. GLW Engineering specialises in custom build objects in Mild Steel, Aluminium & Stainless Steel which is built to an excellent

and very high standard in their modernised workshop area. The company have had many years of experience in the design, manufacture and installation of fabrications. GLW Engineering's staff are trained to the core in their specialised sectors, not to mention they give friendly, efficient and professional services to all clients.

GLW Engineering's clients range from single self-builders, larger companies and contractors. They are a well-established company that are delighted to say they offer

flexibility, time efficiency, and the ability to provide competitive prices that are suitable for all clients.

For further information or general enquiries, please visit the GLW Engineering website. Free quotes are available upon request through the website. Alternatively, you can contact the company via telephone or email.

T +44 (0)1945 464637  
[info@glwengineering.co.uk](mailto:info@glwengineering.co.uk)  
[www.glwengineering.co.uk](http://www.glwengineering.co.uk)



- ▶ **HOIST HIRE**
- ▶ **CONSTRUCTION HOIST SALES**
- ▶ **HOIST SERVICE/REPAIR**
- ▶ **HOIST PARTS/SPARES**
- ▶ **GEDA SERVICE CONTRACTS**

**APPROVED GEDA AGENT**

**SUPPLIER OF HOISTS TO CONSTRUCTION & INDUSTRY**

**01724 781647 ▶ 0113 819 9997 ▶ 0191 260 0543**

**DIRECTHOIST.CO.UK**

## Way above the rest



Direct Hoist specialises in GEDA construction hoists and transport platforms, providing high quality, reliable hoist equipment to the construction industries. Boasting a team of hoist experts, the company implements a cost-efficient construction hoist solution for a variety of hoist requirements. With over 30 years of experience, the company showcases its wealth of knowledge through hire and sales of GEDA hoists and accessories.

Through the use of GEDA, the hoists guarantee reliability as they are manufactured through traditional German manufacturing practices of competence. Direct Hoist provides a vast range of GEDA Hoists, from small to large sizes, and it provides a diverse range of hoists with load capacities of 150kg to 3,700kg.

In terms of hoist types, the company maintains a diverse range of hoist products and capabilities. Direct Hoist provides a range of hoists for hire and hoists for sale. Within these ranges they include: scaffold erection hoists, goods hoists, transport platforms, inclined tile hoists and XL hoists.

With the highest quality being of the utmost importance to Direct Hoist, the company adheres to providing modern, sustainable hoists, which are maintained, installed and dismantled by a team of highly-qualified hoist specialists.

With this in mind, Direct Hoist boasts an array of accreditation, including Constructionline, and the firm is also a member of Construction Plant-hire Association, Construction Hoist Interest Group and Construction Industry Training Board.

Direct Hoist also ensures that its hoist installation supervisors are trained to an NVQ Level 2 diploma in hoist installation.

T 01724 781647  
[www.directhoist.co.uk](http://www.directhoist.co.uk)



## High quality louvre and shading systems

Nationwide Louvre Company (NLC) is a specialist in louvre systems, acoustic louvres, acoustic products/solutions, louvre screening, louvre doors, louvred penthouse enclosures, solar shading (Brise Soleil), natural ventilation equipment, general ventilation systems, grilles, diffusers, dampers, fume extraction, and bespoke architectural aluminium fabrications.



They construct louvres from high quality HETF aluminium extrusions which are fabricated and tig welded for strength of construction. The louvres are manufactured to suite varying depths and applications with varying blade sizes. Specialist louvres are not manufactured to a standard size, and any panel size can be created by joining individual panel modules and then finishing with a full range of powder coatings.

This is applied as an Aluchrome pre-treatment to give a guaranteed life expectancy of 15 years of semi-gloss applications and 20 years of gloss applications. Other finishes such as PVF2d, Syntha Pulvin and anodised finishes are available at varying costs.

NLC can also design bespoke solar shading/brise soleil systems to fit a customers' requirements using standard blades and support methods, meaning it can be designed to complement the building's construction and appearance.

Their acoustic panels are two steel sheets bonded either side of a high density laminar mineral wool core. The external surface can be galvanised, plastic coated or polyester powder coated, and this creates a strong sandwich construction panel with a non-visible side fixing joint detail with excellent acoustic performance.

Contact  
T +44 (0)1922 457204  
sales@nlc-louvres.co.uk  
www.nlcontracts.co.uk

## Net-Zero Building Supplies Ltd: Flame retardant grade EPS



Net-Zero Building Supplies Ltd. are now the main UK distributor of Quad-Lock ICF Building System.

Quad-Lock is one of the most versatile and cost-effective way of building using insulated concrete forms. A range of insulation and cavity thicknesses ensures that we can meet the energy values that our Clients require.

Stock is held in our UK warehouse for prompt delivery times and our inhouse design team can quote for your project from any drawings provided.

Net-Zero Building Supplies Ltd. also carry a range of EPS insulation products all using Flame retardant grade EPS. We supply slab foam for Slabs up to passive standard and we have just launched our I-foam hybrid warm roofing panels.

Using our sister Company Net - Zero Homes Ltd. we can now offer a shell build solution, providing all the services from design, building regs drawings and shell construction to include the foundations, ICF walls and roof.

All our work is carried out using experienced ICF trained contractors and can be covered by insurance backed warranties.

For further information, please contact  
Stephen Campbell on: +44 (0)7771 311311  
or email: netzerobs@gmail.com.

## Zoo Architectural Hardware

Zoo Hardware Ltd are designers and suppliers of architectural door hardware including door handles, knobs, locks, cylinders, door closers, hinges and more. All of their products are produced to the highest quality in aluminium, brass, steel and zinc. Every item they produce is selected for its quality and value for money and they never compromise quality for cheaper prices. Zoo Hardware are confident in their belief that they can offer some of the highest quality products at the most competitive prices on the market.



Their in-house design team is fully qualified in all aspects of design and production and they constantly aim to supply innovative, stylish and cost-effective hardware solutions settling for nothing less than top quality. Design facilities at their head office means they can create, manufacture and deliver state-of-the-art products to stay in-tune with current design trends and ahead of the competition.

The Zoo Hardware product ranges cover all aspects of architectural ironmongery, including: Vier – a precision

design range of levers, hinges, door closers, DIN locks and cylinders created for the exacting needs of Architects, Specifiers and Contractors; Fulton & Bray – traditional and classic brass door hardware and accessories ideal for period and contemporary properties; Rosso Maniglie – an Italian inspired zinc designer lever and accessories range perfect for home owners and housebuilders; and Foxcote Foundries – a wide range of traditional black antique door furniture and window fittings.

View their full range of products at: [www.zoohardware.co.uk](http://www.zoohardware.co.uk) or call one of their friendly sales team on: +44 (0)1228 672900 to discuss your requirements or to request a catalogue.

**Nationwide Louvre Company**  
Louvre Screening / Louvre Doors / Brise Soleil

**NLC** QUALITY & PERFORMANCE

The Louvre Works, Units 5-7 Beacon Trading Estate,  
Middlemore Lane, Aldridge, West Midlands, WS9 8DU  
Tele 01922 457204 or email sales@nlc-louvres.co.uk

**ROSSO MANIGLIE**  
ELEGANZA CON STILE

**FINE ITALIAN DESIGN**

Rosso Maniglie is our exclusive range of Italian inspired designer levers. Produced using a zinc base material and manufactured to the highest standards, this range takes designer levers to the next level.

Created with a sleek and incomparable aesthetic appeal, our contemporary style Rosso Maniglie range has quickly become the first choice for home owners, architects and house builders throughout the UK.

T +44 (0) 1228 672 900  
E sales@zoo-hardware.co.uk  
W www.zoohardware.co.uk

For further information on this range visit our website or call one of our friendly sales team.

Rosso Maniglie is part of Zoo Hardware Ltd.

**QUAD-LOCK®**

**Insulated Concrete Forms for Amazing Buildings**

Quad-Lock Building Systems provide a fast-build and high performing building envelope to the UK construction industry. Quad-Lock Insulating Concrete Forms serve to provide robust concrete buildings and stay in place insulation resulting in safer, more comfortable and ecologically sound homes and commercial buildings.

We provide the most cost-effective method to reach Code for Sustainable Homes Levels 3 to 6, PassivHaus, BREEAM and Building Regulation requirements.

For more information, please contact Stephen Campbell on: +44 (0)7771 311311 or visit [www.quadlock.co.uk](http://www.quadlock.co.uk)



# Hauraton beat the competition at the Community Sports Complex in Doncaster

The Community Sports Complex in Doncaster has been imaginatively planned and built to the highest architectural standards. The development integrates sport and community facilities in a spectacular parkland setting.

Doncaster Council is confident it will raise the town's profile locally, regionally and nationally and help to significantly increase the numbers of local people watching and taking part in sport and other community activities.

At the heart of the complex is a 15,100 capacity community stadium that incorporates an 800 square meter supporters bar, plus a 350 seat restaurant, a gymnasium and martial arts centre. The stadium is complemented by a separate floodlit six lane athletics track with two eight lane straights and its own covered 500 seat mini-stand.

Other facilities include two floodlit reinforced and grass sports fields, 11 floodlit all weather pitches for five and

seven a-side team games, a 10 acre public park and a 1000 space car park.

The location of the Complex has meant particular attention was paid to rainwater run-off and pipe depth issues in general. WSP Consulting Engineers were appointed for this part of the project. In discussion with main contractors Carillion, it was decided to use Hauraton injection moulded polypropylene RECYFIX® SUPER drainage



channels around the perimeter of the stadium. 640 metres of channel was eventually specified, plus a further 340 metres of pitch-side drainage inside the stadium itself. RECYFIX® SUPER was chosen for being strong yet light enough to comply with manual lifting regulations. Subsequently, 250 metres of same channel was also used to drain walkways and around the five-a-side pitches. Hauraton also supplied the components for the athletic track water jump and the long jump sand trap.

Being such a large environmentally sensitive area, the car park drainage system was a particularly tricky problem. Colin Taff, Hauraton applications engineer explains, "The larger sizes of Recyfix® Super channel were initially considered for the car park. However because of its position and relation to the nearby lake it was essential the depth of the system was kept to a minimum. It was realised there could only be one outlet at the end of each run, located to one side of the car park. Using RECYFIX® SUPER would have entail installing too many trash boxes and deep pipe drains therefore a high capacity channel was the only practical solution. After further consideration our newly introduced RECYFIX® HICAP® system was found to answer the problem perfectly".



Hauraton's Sales and Marketing Director, Tim Connolly was very pleased with the feed-back from the contractors, "Carillion seemed to be impressed with the ease and speed of installing all our systems due to the one man lift capability. Calls from site during and after installation proved these benefits to be the case. Carillion's site agent was pleased with the speed at which all the RECYFIX® channels had been installed, even those that were cut to shape, this apparently saved many man hours. The installing teams were also very happy "much easier on my back" and "a lot less fiddly to install" were their comments. Asked how the Recyfix® products compared to other channel systems, the overwhelming response was; it was far better than larger, heavier units made from concrete and polymer materials because they enabled simplified installation procedures".

Tim concludes, "We are delighted that all concerned in the project found our product so 'installer friendly' and that the massive investment Hauraton have made in recent years in new products has been justified with much lower installation costs for contractors, as proved on the Doncaster project".

Contact  
T +44 (0)1582 501380  
[www.hauraton.co.uk](http://www.hauraton.co.uk)



premier  
guarantee®

**KNOCK KNOCK**

We're not joking around...

**WE JUST WANTED TO LET YOU KNOW WE  
HAVE COVERED OVER £57BN WORTH OF  
PROPERTY ACROSS THE UK AND EUROPE**

Find your Structural Warranty Solution  
**PREMIERGUARANTEE.COM | 0800 107 8446**

MD Insurance Services Ltd is the Scheme Administrator for the Premier Guarantee range of structural warranties.  
MD Insurance Services Ltd is authorised and regulated by the Financial Conduct Authority.



## Retrofitting roofs with Solar PV

### BAUDER

When maintaining or upgrading buildings, clients are constantly looking to make the smartest investment and improve energy efficiency. By retrofitting photovoltaic (PV) panels onto a roof it can not only produce cheap, clean electricity for the building's use, but also help landlords and building owners reduce their carbon emissions and hit the standards and regulations for energy efficiency in buildings

such as MEES (minimum energy efficiency standards) that came in to play for landlords this April.

The roof survey stage of a refurbishment project is the ideal occasion for surveyors to propose an on-site rooftop solar PV solution to a client as it creates a great opportunity to review and discuss the suitability of a solar PV installation.

Arguably the most fundamental considerations when contemplating a PV retrofit to a flat roof are weight loadings and design calculations; however, another significant factor is ensuring that waterproofing membranes are

in a suitable condition, that waterproofing warranties will not be impacted, and the life expectancy of the waterproofing system matches that of the new technology.

Discounting this consideration could potentially result in the array needing to be removed early in order to reinstate the integrity of the roof. Thus, the ideal time to add photovoltaics is to do it simultaneously when refurbishing the waterproofing system.

For more information on how Bauder can support your rooftop renewable energy proposal to a client, call +44 (0)845 271 8800



## Innovation from the ground up



If you are specifying a stormwater system, it pays to consult Tubosider. We are the leading UK manufacturer of corrugated steel pipe for WRc approved stormwater management and attenuation tank systems, culverts and tunnels.

Our products provide an infinite variety of layouts. That means you get a simpler, more flexible, storm water solution with less waste, less cost to you and an installation that's often just a simple pipe-laying exercise.

### Why choose a steel system?

The versatility and strength of steel makes it an obvious choice when compared to concrete or plastic systems. Our steel systems can be precisely engineered and the finished product fabricated to exact specifications.

The loadbearing capabilities of our products mean they are compliant to Highways Agency Standard BD12, with a minimum design life of 60 years. We can design in a greater steel thickness or with Trenchcoat Polymer Secondary Coating to give you a system with up to 120 years' design life or for an aggressive environment.

We recognise that our customers are required to provide increasingly more sustainable and ecologically sound solutions on site. Our pipes are made from 25% recycled steel, and our attenuation tanks are 100% recyclable. You won't find that level of sustainability with a plastic or concrete system.

### Value engineered

Our WRc certified Singlestore and patented Twinstore attenuation systems are used in construction projects across the UK. You can rely on our tanks to provide better value than a cellular crate system. Time and again our systems require fewer manholes and less underground pipework saving time and money.

As a minimum, we can reduce the number of manholes required for a crate system by two, and normally many more. Plus, installing one of our conventional tanks often means that you can use a full retention separator, providing a further cost saving.

T +44 (0)1744 452900  
info@tubosider.co.uk  
www.tubosider.co.uk



**When it comes to wet rooms WE are the EXPERTS!**

As the leading wet rooms retailer in the UK, Wetrooms Online are here to help.

Our range of wetroom kits makes installing a wet room quick and easy.

**FREE UK DELIVERY on all orders over £100**




**WET ROOM KITS | SHOWER SCREENS | WALL PANELLING  
UNDER FLOOR HEATING | INSULATION BOARD | TANKING**

[www.wetroomsonline.co.uk](http://www.wetroomsonline.co.uk)  
**Freephone: 0800 280 8008**




**Prefabricated Building Products, Suppliers & Manufacturers in the UK**

- Leading manufacturer and national supplier of prefabricated building components
- CAD designed panels for walls, soffits and spandrels
- Lightweight slip-clad arches, cills and ribbon coursing
- Brick-clad and full GRP chimneys
- GRP canopies
- Brick specials and volume slip-cutting

**The only manufacturer in the UK that can offer CGFMA and BBA certificates on both brick-clad and full GRP chimneys, complete with our own 10 year warranty.**

**Telephone 01495 759555 or visit [www.brickfab.com](http://www.brickfab.com)**



*ONE HOME DESIGN FIRM, TWO GREAT OPTIONS...*



**CUSTOM DESIGN**

Commission a home that is like no other with one of the world's most celebrated home designers. Our process of designing begins while standing on your land, and ends with a design crafted to fit your unique personality and lifestyle. Why trust the design of your home to anyone else?



[www.MossCreek.net](http://www.MossCreek.net)  
+44 (0)20 3290 2986

**HOME PLANS**

Our Ready to Purchase Home Plans are quick, affordable, and easy to modify. They are a great way to obtain a genuine MossCreek home in a streamlined process. Browse the full collection of 120 designs to find just the right plan for your new home, or to discover new ideas for a custom designed home.